

# CERTIFICATE OF LOCATION OF GOVERNMENT CORNER

County of Anoka

State of Minnesota

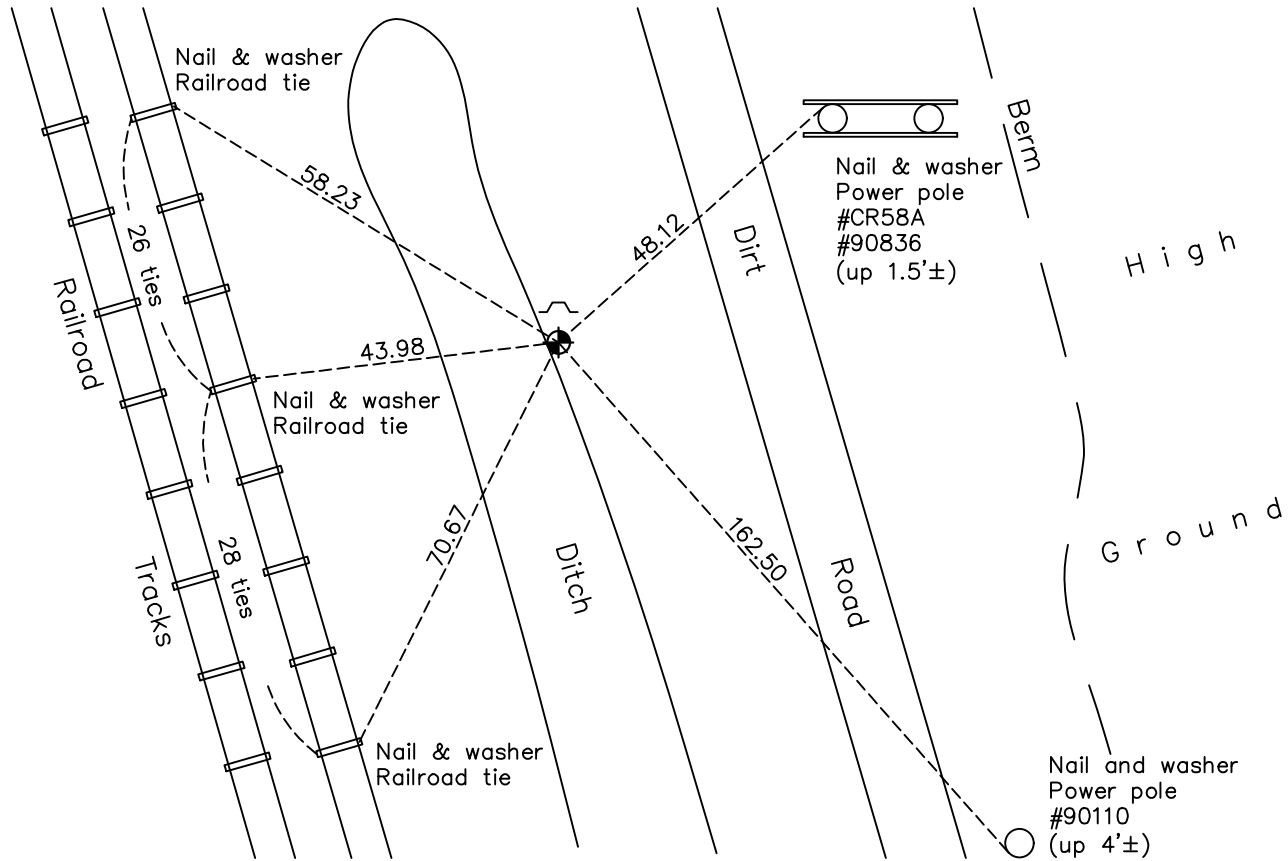
## Southeast Corner of Sec. 26 Township 31 Range 24

On the 17th day of July, 1974, the described corner was evidenced by a concrete monument

and to perpetuate the location of said corner, at the exact location thereof, a permanent marker was placed consisting of a cast iron monument

AND on the 7th day of July, 2022, said permanent marker was found down 0.1'± with a sign and post on the north side and the ties were updated

Updated reference ties are as shown below.



Revision Date  
 12/20/2022

N.A.D. 1983 Coordinates  
 (1996 Adjustment)

County Project Coordinates	
Northing	<u>137758.5281</u>
Easting	<u>494697.4026</u>
Date	<u>8/17/01</u>

I hereby certify that this United States public land survey monument record is correct and complete to the best of my knowledge and belief.  
David Zieglmeier Date 2/28/23  
 David Zieglmeier Anoka County Surveyor  
 Minnesota License Number 46179

# HISTORY OF GOVERNMENT CORNER

Page No. 91

County of Anoka

State of Minnesota

## Southeast Corner of Sec. 26 Township 31 Range 24

### **CORNER HISTORY:**

December 6, 1944 - H.A. Cartwright found concrete monument set down 0.2'. Established ties to monument.

August 11, 1959 - Caswell Engineering Company found concrete monument and updated ties.

August 3, 1960 - Found concrete monument down 0.2' with an iron pipe up 0.4' on the south side. Updated ties.

June 4, 1964 - Found concrete monument and updated ties.

July 12, 1966 - Found concrete monument and updated ties.

August 4, 1970 - Found concrete monument and updated ties.

July 17, 1974 - Replaced concrete monument with a cast iron monument set flush with surface. Updated ties.

June 24, 1977 - Found cast iron monument and updated ties.

June 27, 1980 - Found cast iron monument and updated ties.

June 17, 1986 - Found cast iron monument and updated ties.

August 29, 1990 - Found cast iron monument and set sign and post on north side. Updated ties.

August 15, 1994 - Found cast iron monument and updated ties.

August 17, 2001 - Found cast iron monument and established NAD 1983 (1996 Adjustment) Anoka County Project Coordinates by Static GPS methods. Updated ties.

March 5, 2010 - Found cast iron monument down 0.2'± with a sign and post on the north side. Updated ties.

May 11, 2015 - Found cast iron monument down 0.2'± with a sign and post on the north side. Verified position by VRS GPS methods. Updated ties.

February 11, 2020 - Found cast iron monument down 0.2'± with a sign and post on the north side. Verified position by VRS GPS methods. Updated ties.

July 7, 2022 - Found cast iron monument down 0.1'±. Verified position by VRS GPS method. Updated ties.