

CERTIFICATE OF LOCATION OF GOVERNMENT CORNER

County of Anoka

State of Minnesota

Witness Corner of Sec. 26 Township 31 Range 24

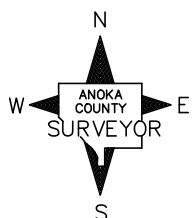
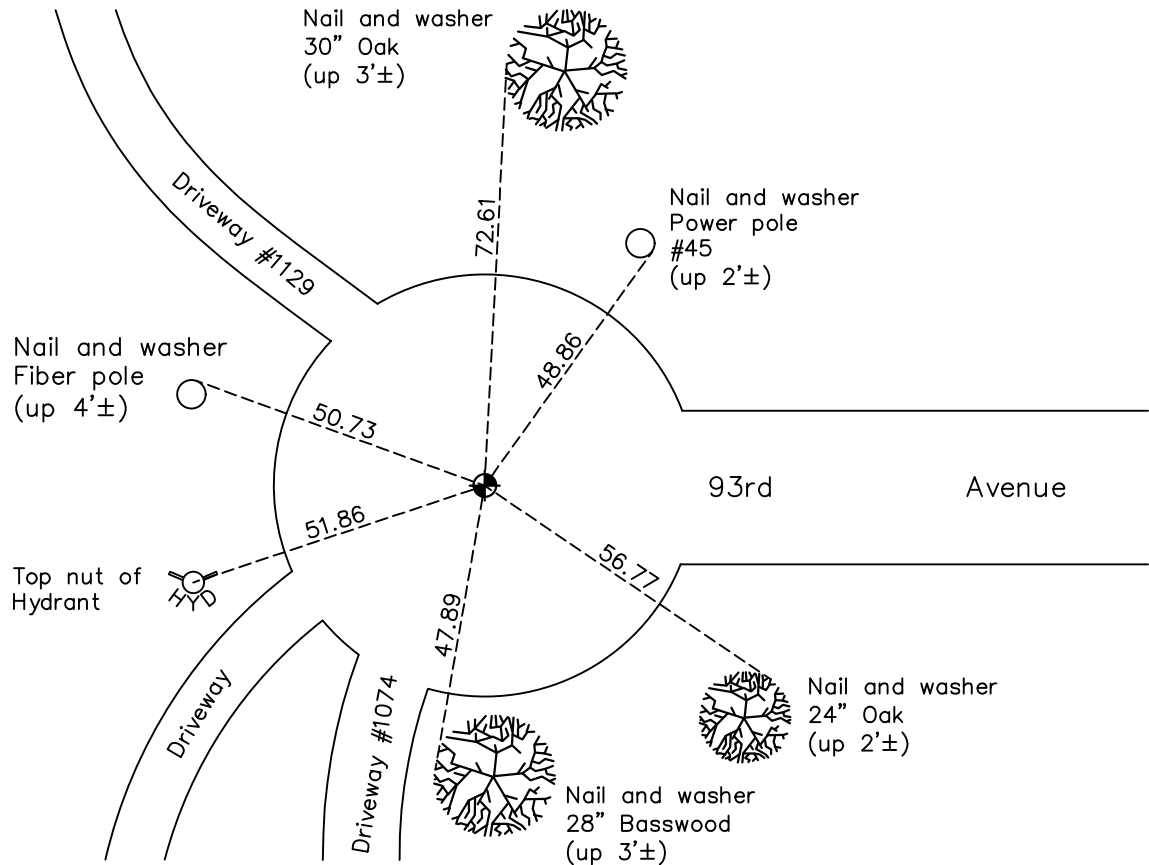
(On south line of SE1/4)

On the 19th day of September, 1990, the described corner was evidenced by a 1/2" Iron Pipe

and to perpetuate the location of said corner, at the exact location thereof, a permanent marker was placed consisting of a cast iron monument

AND on the 8th day of July, 2022, said permanent marker was found flush and the ties were updated

Updated reference ties are as shown below.



N.A.D. 1983 Coordinates
(1996 Adjustment)

County Project Coordinates	
Northing	<u>137804.5830</u>
Easting	<u>492491.4415</u>
Date	<u>8/16/01</u>

I hereby certify that this United States public land survey monument record is correct and complete to the best of my knowledge and belief.

David Zieglmeier Date 2/28/23

David Zieglmeier Anoka County Surveyor
Minnesota License Number 46179

Revision Date
12/20/2022

HISTORY OF GOVERNMENT CORNER

Page No. 91A

County of Anoka

State of Minnesota

Witness Corner of Sec. 26 Township 31 Range 24
(On south line of SE1/4)

CORNER HISTORY:

September 28, 1987 - Set 1/2" iron pipe using area resurvey and established ties to monument.

August 16, 1990 - Found 1/2" iron pipe and updated ties.

September 19, 1990 - Replaced 1/2" iron pipe with a cast iron monument and updated ties.

August 15, 1994 - Found cast iron monument and updated ties.

August 16, 2001 - Found cast iron monument and established NAD 1983 (1996 Adjustment) Anoka County Project Coordinates by Static GPS methods. Updated ties.

March 5, 2010 - Found cast iron monument and updated ties.

May 11, 2015 - Found cast iron monument and updated ties.

June 29, 2017 - Updated ties and removed cast iron monument prior to road construction. Verified location of corner by VRS GPS methods.

August 28, 2017 - Set cast iron monument flush with the surface after road construction using ties. Updated ties and verified location of corner by Static and VRS GPS methods.

February 11, 2020 - Found cast iron monument flush. Verified position by VRS GPS methods. Updated ties.

July 8, 2022 - Found cast iron monument flush. Verified position by VRS GPS method. Updated ties.