

CERTIFICATE OF LOCATION OF GOVERNMENT CORNER

County of Anoka

State of Minnesota

Witness Corner of Sec. 26 Township 31 Range 24

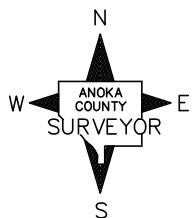
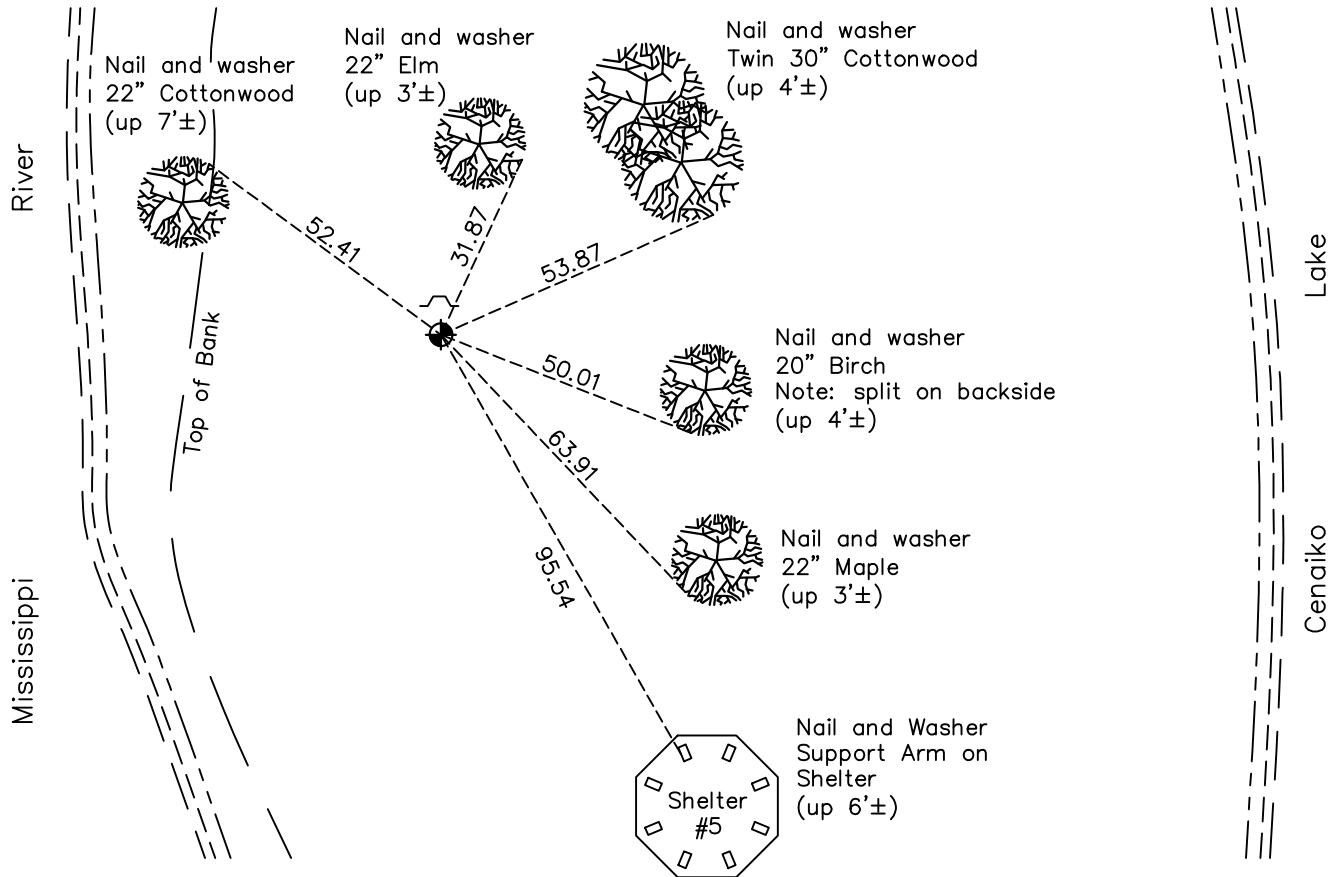
(On south line of SW1/4)

On the 29th day of May, 1980, the described corner was evidenced by area resurvey

and to perpetuate the location of said corner, at the exact location thereof, a permanent marker was placed consisting of a cast iron monument

AND on the 7th day of July, 2022, said permanent marker was found down 0.4'± with only post found and no sign to the north side, ties were updated

Updated reference ties are as shown below.



Revision Date
12/20/2022

N.A.D. 1983 Coordinates
 (1996 Adjustment)

County Project Coordinates	
Northing	<u>137876.7568</u>
Easting	<u>490748.4035</u>
Date	<u>8/16/01</u>

I hereby certify that this United States public land survey monument record is correct and complete to the best of my knowledge and belief.
David Zieglmeier Date 2/28/23
 David Zieglmeier Anoka County Surveyor
 Minnesota License Number 46179

HISTORY OF GOVERNMENT CORNER

Page No. 92A

County of Anoka

State of Minnesota

Witness Corner of Sec. 26 Township 31 Range 24
(On south line of SW1/4)

CORNER HISTORY:

January 24, 1944 - H.A. Cartwright found concrete monument set flush with the surface. Established ties to monument. The field notes for this monument label it as a Meander corner on the south line of the section.

May 28, 1962 - Concrete monument and trees to the west of monument were washed out by the floods in Spring of 1951. Could not find tree to NE.

May 29, 1980 - Set cast iron monument using occupation line and established ties to monument. Set sign and post on north side of monument. Corner is 30'± east of Mississippi River.

May 6, 1986 - Found cast iron monument flush with the surface with a sign and post on the north side after house was removed. Updated ties.

May 14, 1986 - Set construction ties prior to construction.

January 19, 1988 - Updated construction ties.

August 28, 1990 - Found cast iron monument and updated ties.

August 15, 1994 - Found cast iron monument and updated ties.

August 16, 2001 - Found cast iron monument and established NAD 1983 (1996 Adjustment) Anoka County Project Coordinates by Static GPS methods. Updated ties.

February 18, 2010 - Found cast iron monument down 0.6'± and updated ties.

May 28, 2015 - Found cast iron monument down 0.6'±. Verified position by VRS GPS methods. Updated ties.

March 10, 2020 - Found cast iron monument down 0.6'±. Verified position by VRS GPS methods. Updated ties.

July 7, 2022 - Found cast iron monument down 0.4'±, verified position by VRS GPS method and updated ties.