

CERTIFICATE OF LOCATION OF GOVERNMENT CORNER

County of Anoka

State of Minnesota

Witness Corner of Sec. 26 Township 31 Range 24

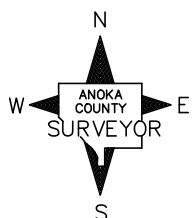
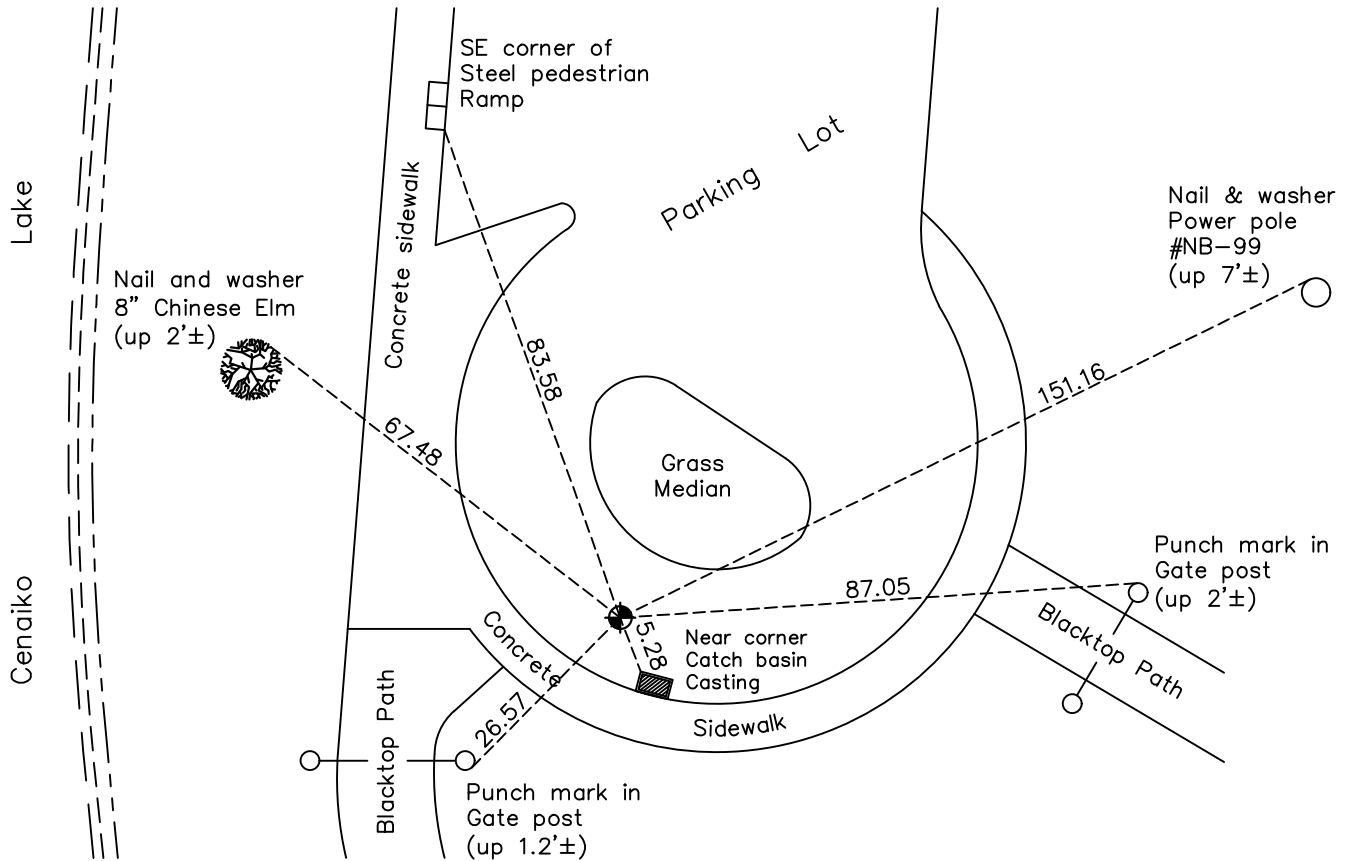
(On south line of SW1/4)

On the 22nd day of September, 1987, the described corner was evidenced by area resurvey
setting spike

and to perpetuate the location of said corner, at the exact location thereof, a permanent marker was placed consisting of a cast iron monument found August 28, 1990

AND on the 7th day of July, 2022, said permanent marker was found flush and the
ties were updated

Updated reference ties are as shown below.



Revision Date
12/20/2022

N.A.D. 1983 Coordinates
 (1996 Adjustment)

County Project Coordinates	
Northing	<u>137828.3704</u>
Easting	<u>491753.5972</u>
Date	<u>8/16/01</u>

I hereby certify that this United States public land survey monument record is correct and complete to the best of my knowledge and belief.

David Zieglmeier Date 2/28/23

David Zieglmeier Anoka County Surveyor
 Minnesota License Number 46179

HISTORY OF GOVERNMENT CORNER

Page No. 92B

County of Anoka

State of Minnesota

Witness Corner of Sec. 26 Township 31 Range 24
(On south line of SW1/4)

CORNER HISTORY:

September 22, 1987 - Set spike using area resurvey and established ties to monument.

March 3, 1988 - Found spike and updated ties. It is not known whether the spike was replaced with a cast iron monument at this time.

August 28, 1990 - Found cast iron monument and updated ties.

August 15, 1994 - Found cast iron monument and updated ties.

August 16, 2001 - Found cast iron monument and established NAD 1983 (1996 Adjustment) Anoka County Project Coordinates by Static GPS methods. Updated ties.

February 18, 2010 - Found cast iron monument flush with the surface and updated ties.

July 8, 2013 - Checked ties, verified location of corner by VRS GPS methods and removed cast iron monument prior to road construction.

October 31, 2013 - Set cast iron monument flush with surface after road construction using construction ties. Verified location of corner by Static GPS methods.

May 11, 2015 - Found cast iron monument. Verified position by VRS GPS methods. Updated ties.

February 11, 2020 - Found cast iron monument. Verified position by VRS GPS methods. Updated ties.

July 7, 2022 - Found cast iron monument flush. Verified position by VRS GPS method. Updated ties.