

CERTIFICATE OF LOCATION OF GOVERNMENT CORNER

County of Anoka

State of Minnesota

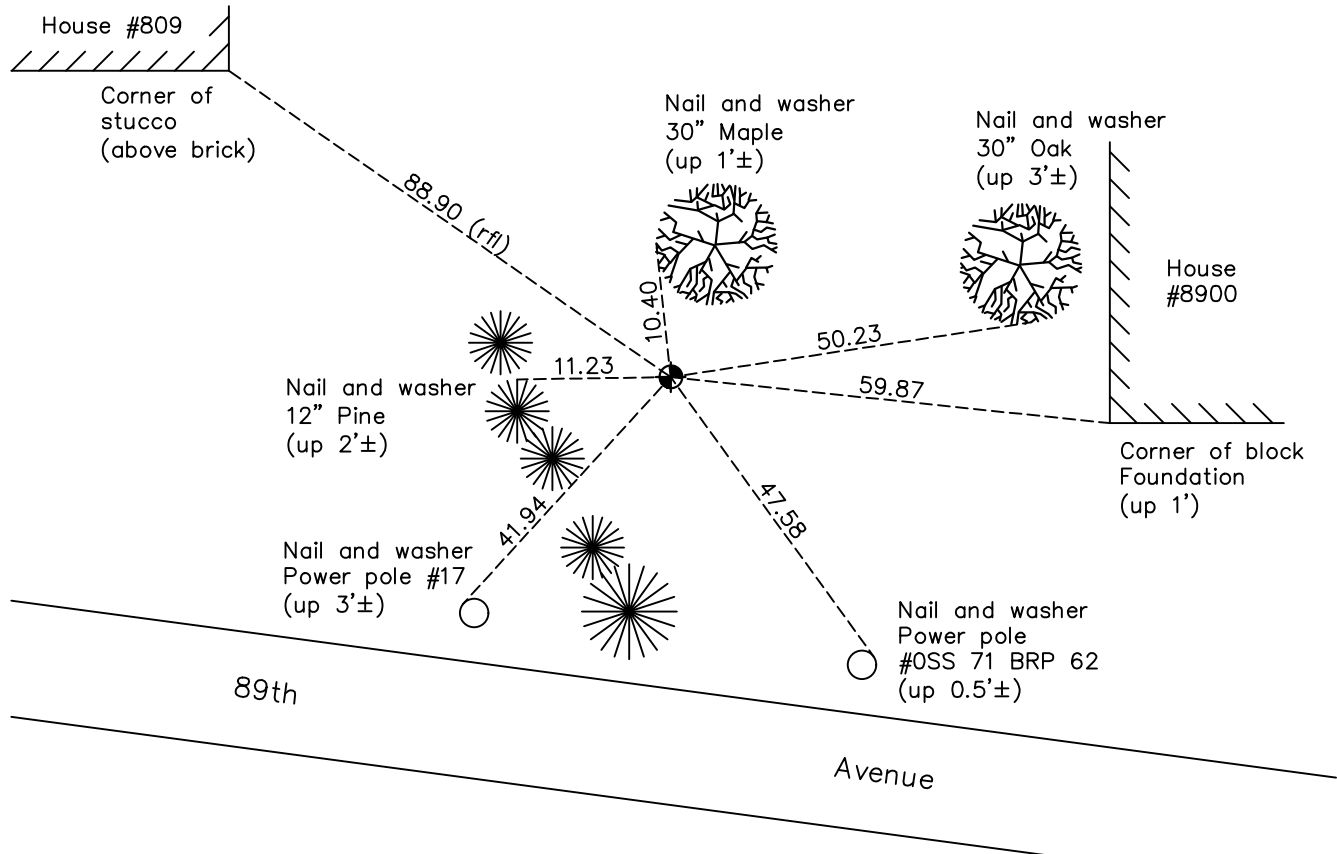
East 1/4 Corner of Sec. 35 Township 31 Range 24

On the 1st day of February, 1988, the described corner was evidenced by a 3/4" iron pipe from platting

and to perpetuate the location of said corner, at the exact location thereof, a permanent marker was placed consisting of a cast iron monument found August 17, 1990

AND on the 8th day of July, 2022, said permanent marker was found down 0.4'± and the ties were updated

Updated reference ties are as shown below.



Revision Date
 12/20/2022

N.A.D. 1983 Coordinates
 (1996 Adjustment)

County Project Coordinates	
Northing	135120.6074
Easting	494650.2744
Date	9/25/01

I hereby certify that this United States public land survey monument record is correct and complete to the best of my knowledge and belief.
David Zieglmeier Date 2/28/23
 David Zieglmeier Anoka County Surveyor
 Minnesota License Number 46179

HISTORY OF GOVERNMENT CORNER

Page No. 93

County of Anoka

State of Minnesota

East 1/4 Corner of Sec. 35 Township 31 Range 24

CORNER HISTORY:

March 25, 1963 - Set 3/4" iron pipe using area platting and established ties to monument.

August 4, 1970 - Found 3/4" iron pipe and updated ties.

June 24, 1977 - Found 3/4" iron pipe and updated ties.

June 20, 1986 - Found 3/4" iron pipe and updated ties.

February 1, 1988 - Found 3/4" iron pipe and updated ties.

August 17, 1990 - Found cast iron monument (date set is unknown) and updated ties.

August 15, 1994 - Found cast iron monument and updated ties.

September 25, 2001 - Found cast iron monument and established NAD 1983 (1996 Adjustment) Anoka County Project Coordinates by Static GPS methods. Updated ties.

March 5, 2010 - Found cast iron monument down 0.4'± and updated ties.

May 20, 2015 - Found cast iron monument down 0.4'± and updated ties.

February 11, 2020 - Found cast iron monument down 0.4'±. Verified position by VRS GPS methods. Updated ties.

July 8, 2022 - Found cast iron monument down 0.4'±. Verified position by VRS GPS method. Updated ties.