

# CERTIFICATE OF LOCATION OF GOVERNMENT CORNER

County of Anoka

State of Minnesota

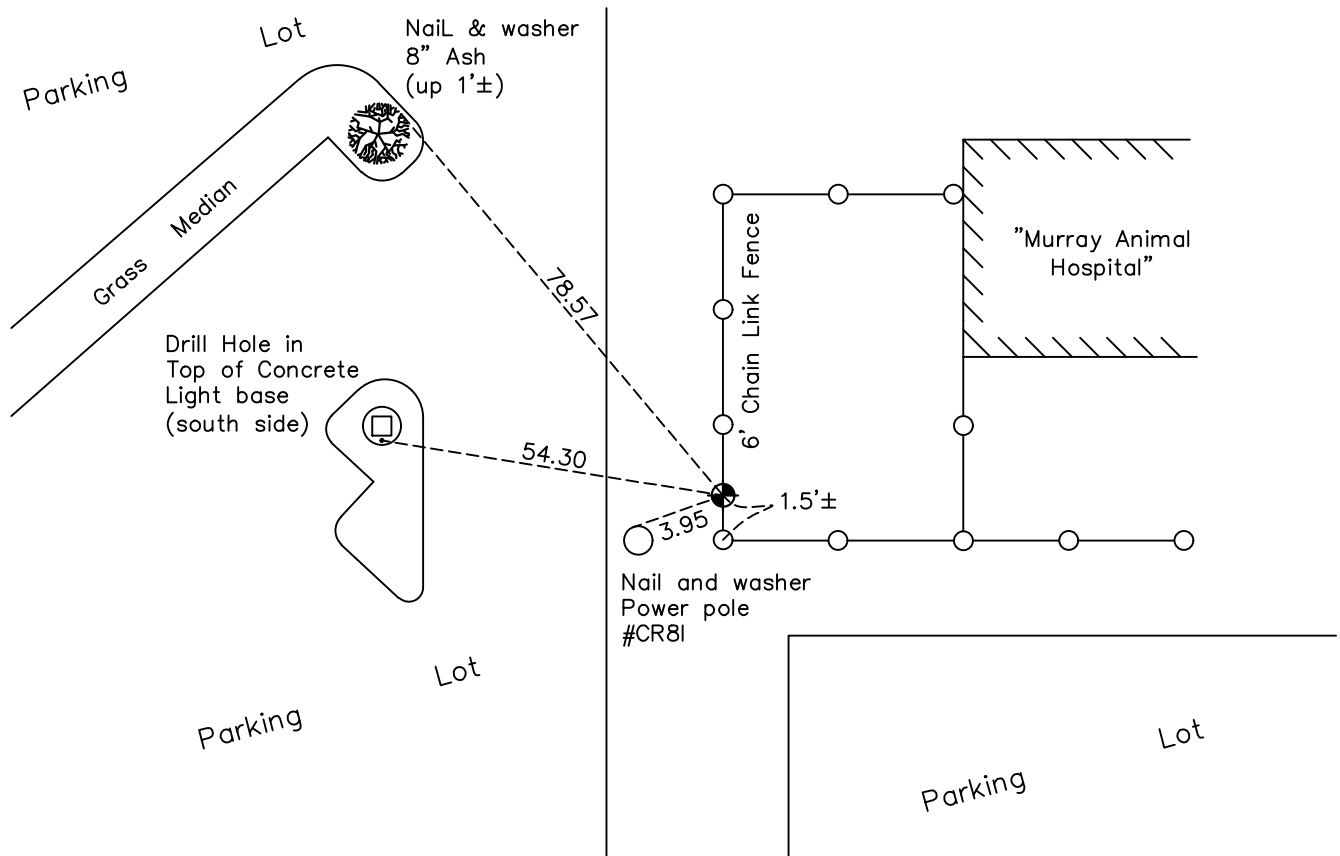
## East 1/4 Corner of Sec. 36 Township 31 Range 24

On the 5th day of June, 1998, the described corner was evidenced by a concrete monument

and to perpetuate the location of said corner, at the exact location thereof, a permanent marker was placed consisting of a cast iron monument

AND on the 19th day of July, 2022, said permanent marker was found flush and the ties were updated

Updated reference ties are as shown below.



Revision Date  
 12/20/2022

N.A.D. 1983 Coordinates  
 (1996 Adjustment)

County Project Coordinates	
Northing	<u>135189.7305</u>
Easting	<u>499950.1049</u>
Date	<u>12/15/98</u>

I hereby certify that this United States public land survey monument record is correct and complete to the best of my knowledge and belief.  
*David Zieglmeier* Date 2/28/23  
 David Zieglmeier Anoka County Surveyor  
 Minnesota License Number 46179

# HISTORY OF GOVERNMENT CORNER

Page No. 95

County of Anoka

State of Minnesota

## East 1/4 Corner of Sec. 36 Township 31 Range 24

### **CORNER HISTORY:**

July 6, 1943 - H.A. Cartwright found concrete monument. Established ties to monument.

August 5, 1960 - Found concrete monument flush with surface and an iron pipe on the north side. Updated ties.

June 3, 1964 - Found concrete monument down 0.4' with an iron pipe on the north side. Updated ties.

July 11, 1966 - Found concrete monument with an iron pipe on the north side. Updated ties.

August 4, 1970 - Found concrete monument with an iron pipe on the north side. Updated ties.

July 19, 1974 - Found concrete monument with an iron pipe on the north side. Updated ties.

June 24, 1977 - Found concrete monument with an iron pipe on the north side. Updated ties.

July 9, 1980 - Found concrete monument with an iron pipe on the north side. Updated ties.

August 27, 1990 - Found concrete monument and updated ties.

April 12, 1996 - Found concrete monument down 1' and updated ties.

June 5, 1998 - Replaced concrete monument with a cast iron monument and updated ties.

December 15, 1998 - Found cast iron monument and established NAD 1983 (1996 Adjustment) Anoka County Project Coordinates by Static GPS methods. Updated ties.

March 12, 2010 - Found cast iron monument and updated ties.

May 1, 2015 - Found cast iron monument. Verified position by VRS GPS methods. Updated ties.

February 11, 2020 - Found cast iron monument. Verified position by VRS GPS methods. Updated ties.

July 19, 2022 - Found cast iron monument flush, verified position by VRS GPS method and updated ties.