

CERTIFICATE OF LOCATION OF GOVERNMENT CORNER

County of Anoka

State of Minnesota

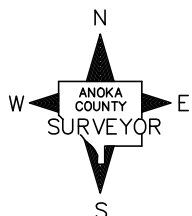
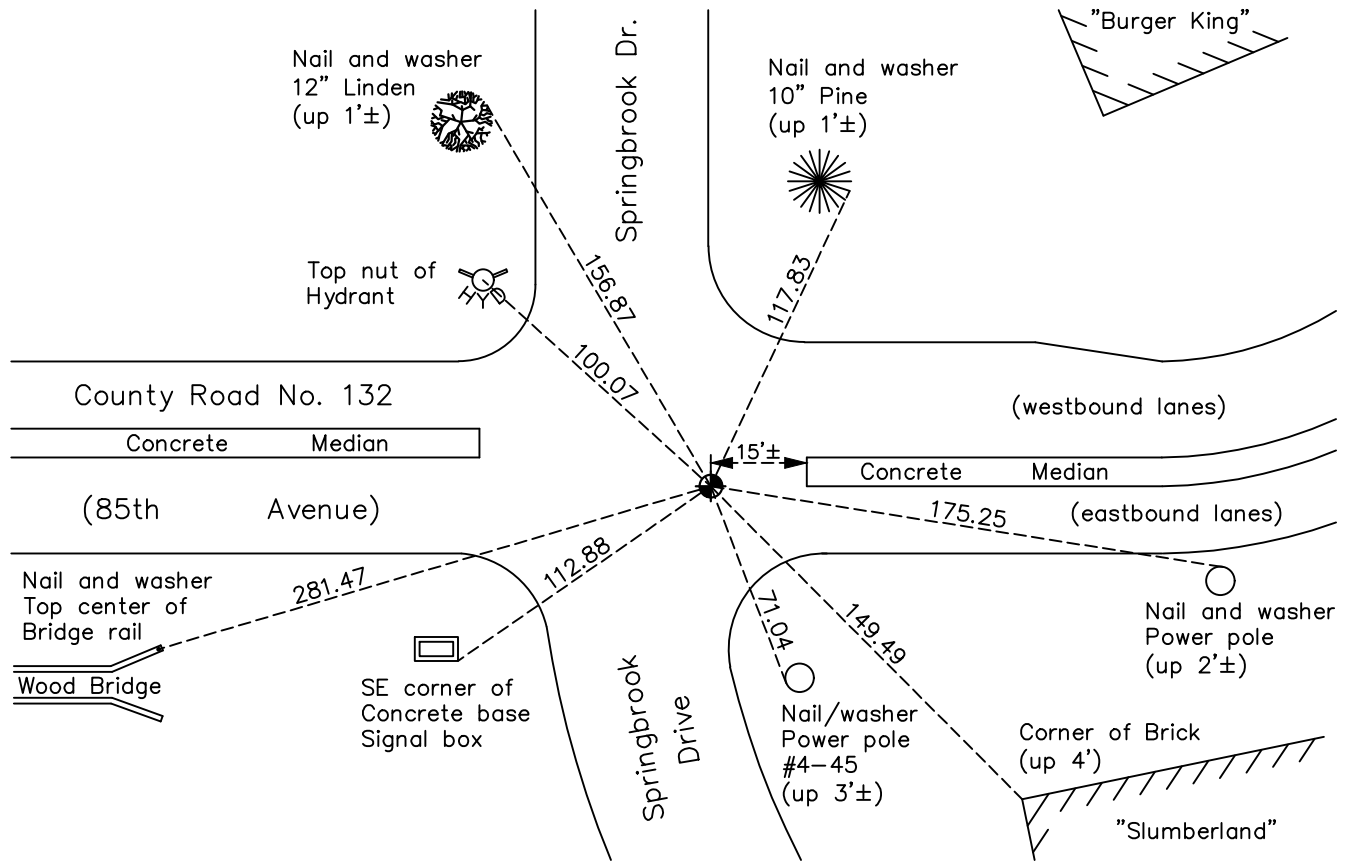
Southeast Corner of Sec. 36 Township 31 Range 24

On the 20th day of March, 1943, the described corner was evidenced by a 4"X8"
limestone monument

and to perpetuate the location of said corner, at the exact location thereof, a permanent marker was placed consisting of a cast iron monument

AND on the 11th day of February, 2020, said permanent marker was found and the ties
were updated

Updated reference ties are as shown below.



Revision Date
9/16/20

N.A.D. 1983 Coordinates
 (1996 Adjustment)

County Project Coordinates	
Northing	<u>132549.8472</u>
Easting	<u>499932.5860</u>
Date	<u>7/29/99</u>

I hereby certify that this United States public land survey monument record is correct and complete to the best of my knowledge and belief.

David Zieglmeier Date 3/9/22

David Zieglmeier Anoka County Surveyor
 Minnesota License Number 46179

HISTORY OF GOVERNMENT CORNER

Page No. 96

County of Anoka

State of Minnesota

Southeast Corner of Sec. 36 Township 31 Range 24

CORNER HISTORY:

March 20, 1943 - H.A. Cartwright found 4"x8" limestone monument up 16". Established ties to monument.

July 1, 1960 - Found 4"x8" limestone monument up 16" and updated ties.

October 31, 1962 - Replaced broken limestone monument with a 1"x7' iron pipe set up 3' and updated ties. Top 4' of iron pipe is painted with 6" red and white bands.

November 17, 1965 - Replaced 1"x7' iron pipe (bent and moved by road construction) with a cast iron monument set flush with the surface. Updated ties.

July 11, 1966 - Found cast iron monument and updated ties.

August 19, 1969 - Replaced solid cast iron monument with an extendible cast iron monument set flush with the surface. Set P.K. nails 2.00' north and east of monument. Updated ties.

May 10, 1973 - Checked all ties including construction ties and removed cast iron monument prior to construction.

July 19, 1974 - Found cast iron monument (date reset unknown) and updated ties.

October 12, 1981 - Set construction tie prior to road construction.

May 23, 1982 - Set cast iron monument flush with surface after road construction using construction ties. Set P.K. nails 2.00' north and east of monument. Updated ties.

June 13, 1986 - Found cast iron monument and updated ties.

August 27, 1990 - Found cast iron monument and updated ties.

December 9, 1993 - Replaced cast iron monument with a new cast iron monument. Updated ties.

August 15, 1994 - Found cast iron monument and updated ties.

July 29, 1999 - Found cast iron monument and established NAD 1983 (1996 Adjustment) Anoka County Project Coordinates by Static GPS methods. Updated ties.

October 21, 2010 - Replaced cast iron monument with a new cast iron monument after construction. Updated ties.

May 1, 2015 - Found cast iron monument. Verified position by VRS GPS methods. Updated ties.

February 11, 2020 - Found cast iron monument. Verified position by VRS GPS methods. Updated ties.