

# CERTIFICATE OF LOCATION OF GOVERNMENT CORNER

County of Anoka

State of Minnesota

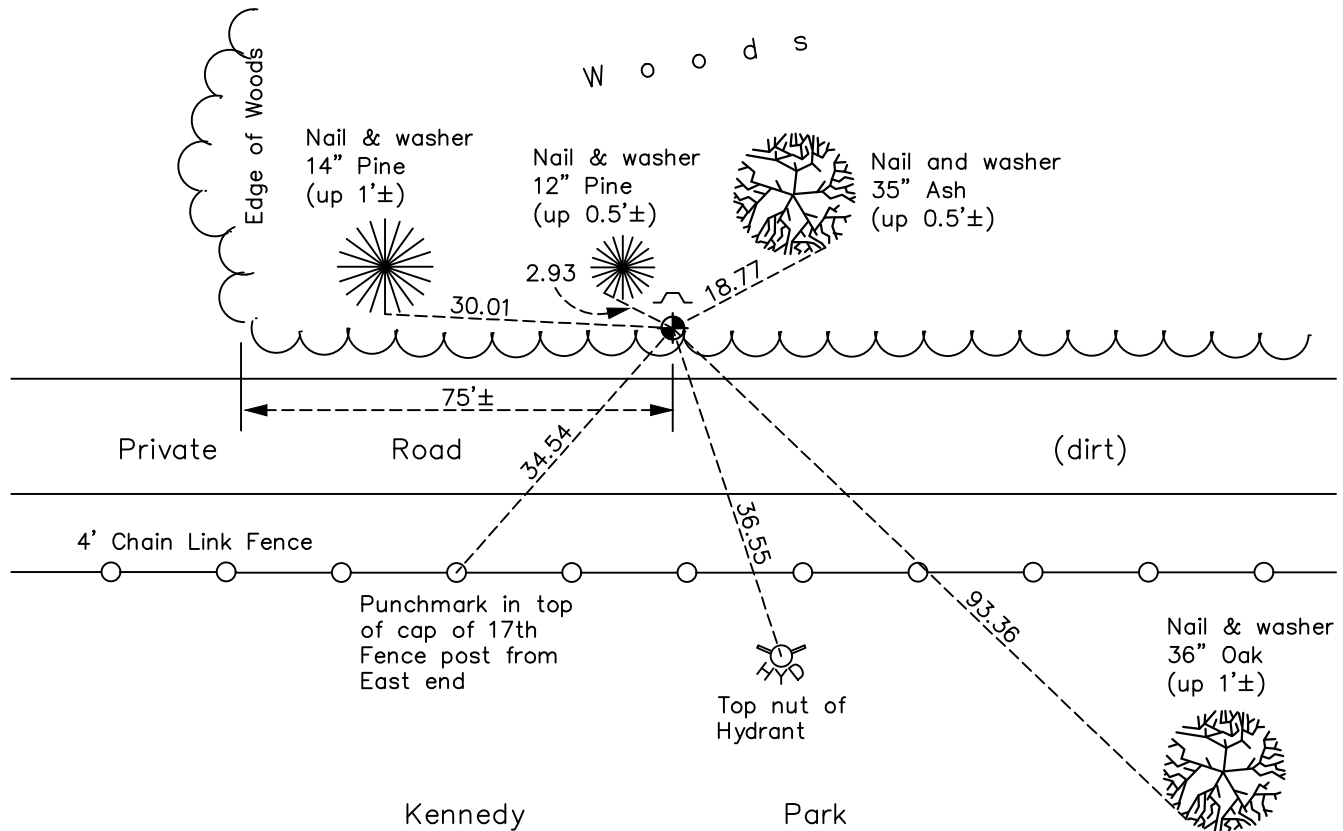
## Southwest Corner of Sec. 36 Township 31 Range 24

On the 19th day of July, 1974, the described corner was evidenced by a concrete monument

and to perpetuate the location of said corner, at the exact location thereof, a permanent marker was placed consisting of a cast iron monument

AND on the 19th day of July, 2022, said permanent marker was found down 0.1'± with a sign and post on the north side and the ties were updated

Updated reference ties are as shown below.



Revision Date  
 12/20/2022

N.A.D. 1983 Coordinates  
 (1996 Adjustment)

County Project Coordinates	
Northing	132480.0152
Easting	494610.5623
Date	9/25/01

I hereby certify that this United States public land survey monument record is correct and complete to the best of my knowledge and belief.

*David Zieglmeier* Date 2/28/23

David Zieglmeier Anoka County Surveyor  
 Minnesota License Number 46179

# HISTORY OF GOVERNMENT CORNER

Page No. 98

County of Anoka

State of Minnesota

## Southwest Corner of Sec. 36 Township 31 Range 24

### **CORNER HISTORY:**

July 13, 1943 - H.A. Cartwright found concrete monument. Established ties to monument.

June 29, 1960 - Found concrete monument set down 0.2' and 9'± north of centerline of private road. Set iron pipe on north side of monument and updated ties.

June 5, 1964 - Found concrete monument and updated ties.

July 12, 1966 - Found concrete monument and updated ties.

August 4, 1970 - Found concrete monument and updated ties.

July 19, 1974 - Replaced concrete monument with a cast iron monument set flush with surface. Updated ties.

June 24, 1977 - Found cast iron monument and updated ties.

August 27, 1990 - Found cast iron monument and updated ties. Set sign and post on north side of monument.

August 3, 1994 - Found cast iron monument and updated ties.

September 25, 2001 - Found cast iron monument and established NAD 1983 (1996 Adjustment) Anoka County Project Coordinates by Static GPS methods. Updated ties.

March 8, 2010 - Found cast iron monument and updated ties.

June 1, 2015 - Found cast iron monument and updated ties.

February 11, 2020 - Found cast iron monument and updated ties.

July 19, 2022 - Found cast iron monument down 0.1'±, verified position by VRS GPS method and updated ties.