

CERTIFICATE OF LOCATION OF GOVERNMENT CORNER

County of Anoka

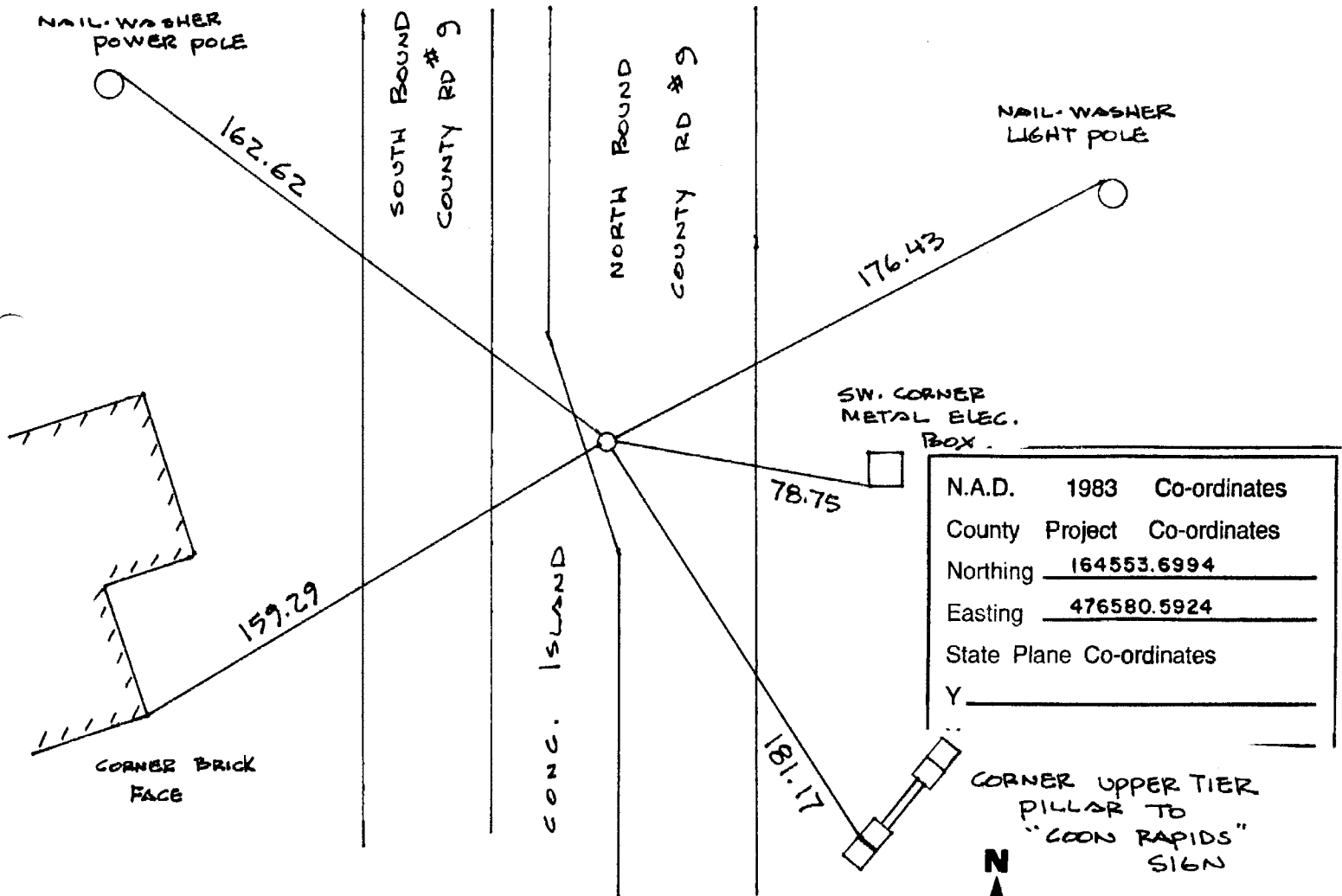
State of Minnesota

NORTH $\frac{1}{4}$ Corner of Sec. 5 Township 31 Range 24

I hereby certify that on the 2ND day of AUGUST, 1960, I found the described corner which was evidenced by GRANITE MONUMENT

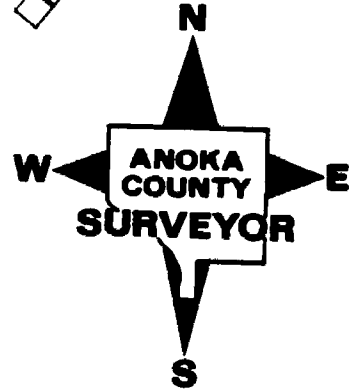
and I further certify that to perpetuate the location of said corner, I did, at the exact location thereof, place a permanent marker consisting of CAST IRON MONUMENT

which reference or witness monuments are located in the manner following:



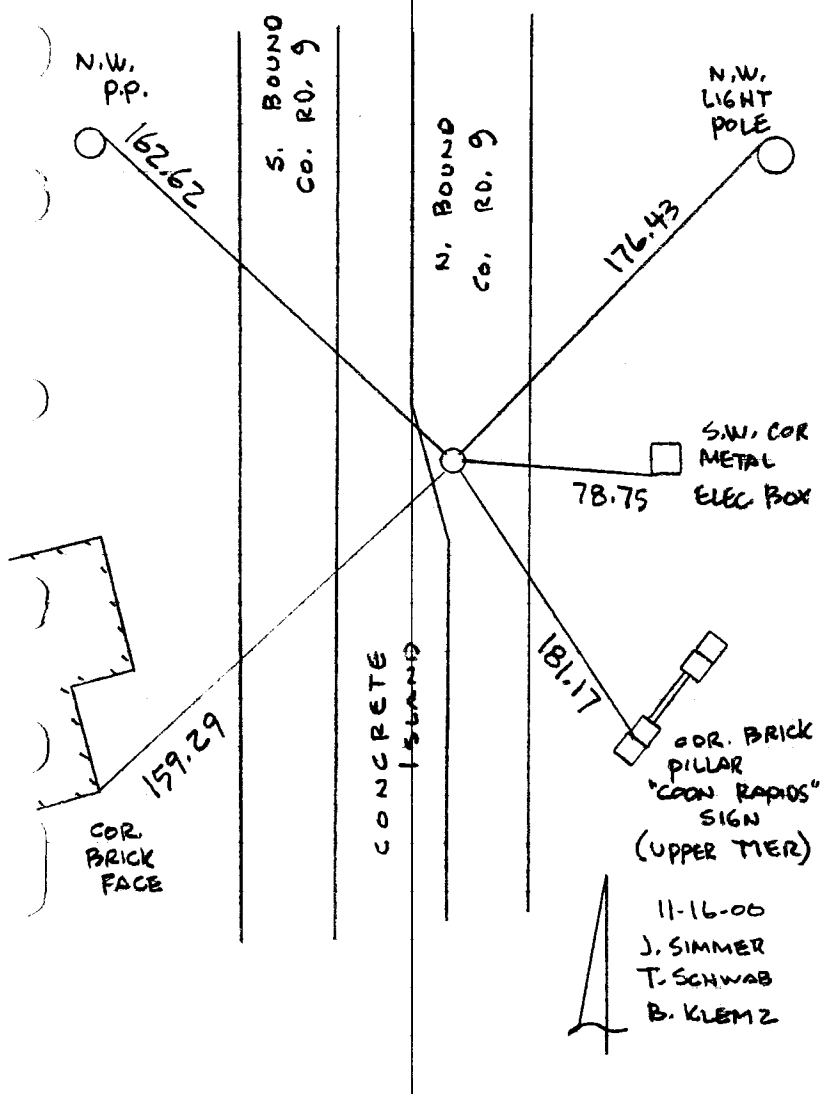
N.A.D.	1983	Co-ordinates
County Project	Co-ordinates	
Northing	<u>164553.6994</u>	
Easting	<u>476580.5924</u>	
State Plane Co-ordinates	Y _____	

Revised date	Revised date	Revised date
<u>6-16-86</u>		
<u>4-17-90</u>		
<u>5-18-94</u>		
<u>8-8-94</u>		
<u>11-16-00</u>		



NORTH 1/4 COR. SEC 5 T 31 R 24
RETIRED & GPS CAST IRON MONUMENT

NATIONAL MONUMENT
NO. 446

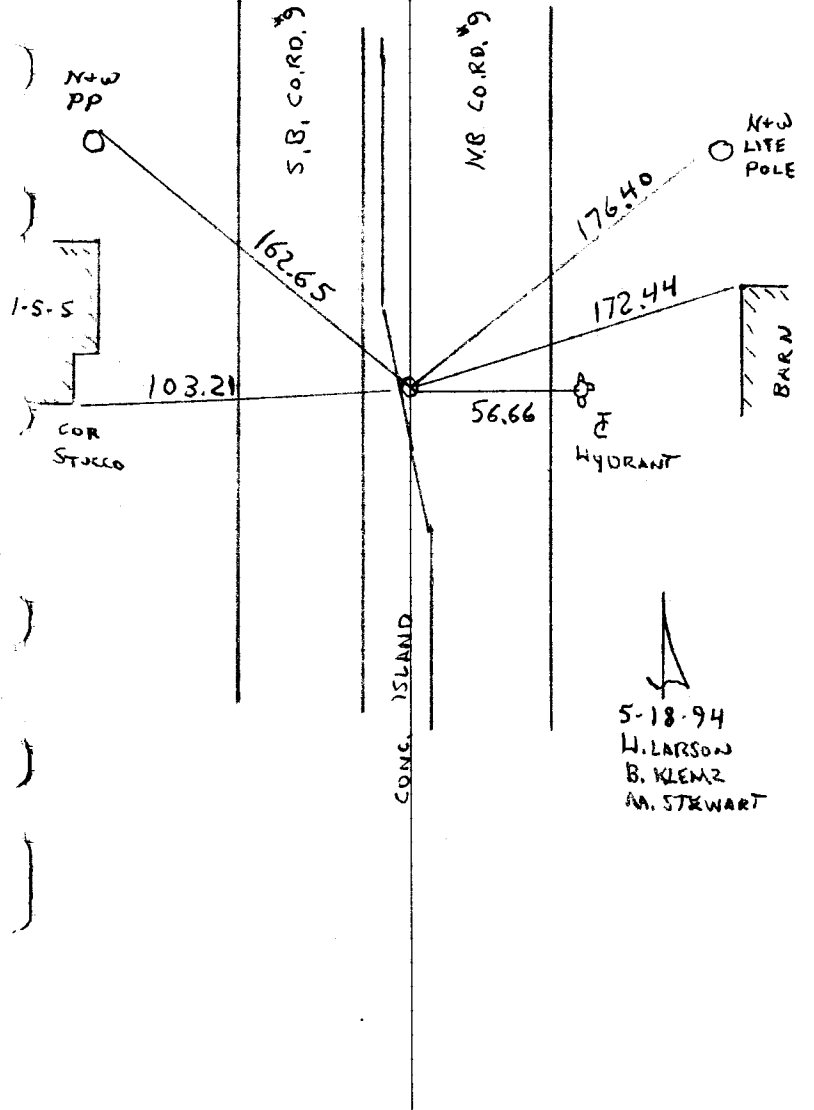


11-16-06
 J. SIMMER
 T. SCHWAB
 B. KLEMZ

NORTH 1/4 SEC. 5 T 31 R 24

SET CAST IRON ON TOP OF GRANITE AFTER
ROAD CONSTRUCTION C.I. FLUSH NEXT TO
CONC. CURB.

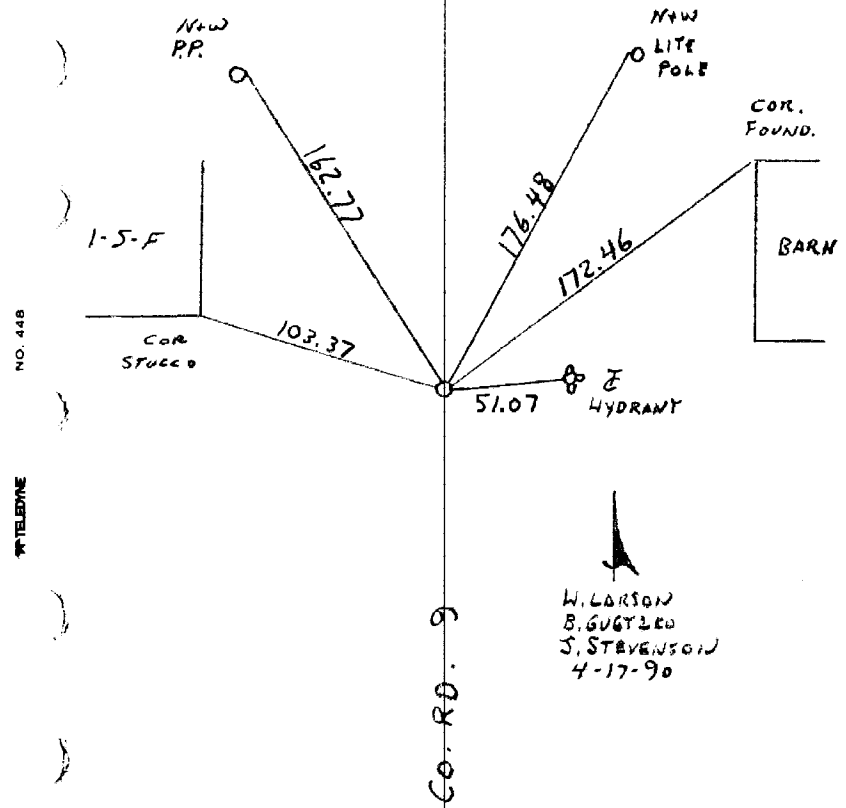
NATIONAL MONUMENT
NO. 448



5-18-94
 W. LARSON
 B. KLEMZ
 M. STEWART

NORTH 1/4 SECTION 5 T31 R24

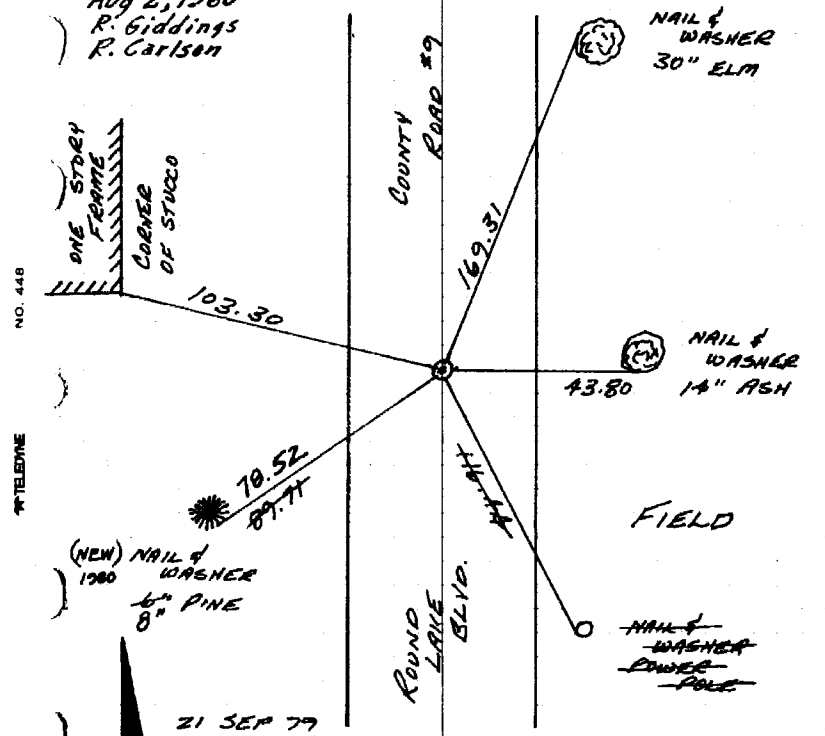
RETIED MONUMENT FOR CONSTRUCTION



N 1/4 CORNER SECTION 5-T31-R24

GRANITE MONUMENT DOWN 1.5'. PLACED SHORTENED CAST IRON ON TOP AND TIED. CAST IRON FLUSH WITH PIN'S 2.00' NORTH AND EAST. CAST IRON 3.5' EAST OF CENTERLINE.

Aug 2, 1960
R. Giddings
R. Carlson



(NEW) NAIL & WASHER 1960
6" PINE
8"

21 SEP 79
H. LARSON
B. GUETZKO
D. NAGLAK

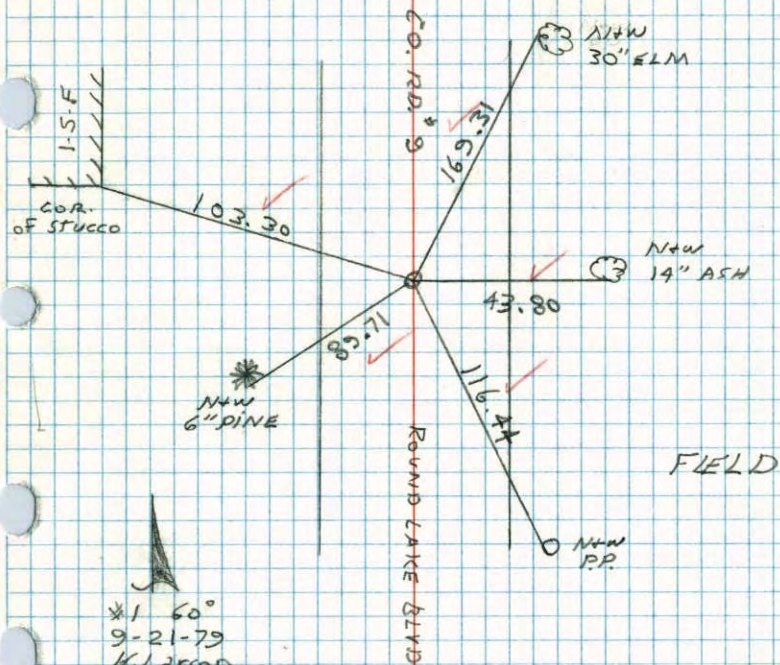
TIE CHECK
6-25-80
B. STEPHENS
P. ROSS
P. ROBYN

TEMPERATURE CORRECTED
AND MONUMENTS BY
TAPED MEASUREMENTS

ROLAND W. ANDERSON
COUNTY SURVEYOR
ANOKA COUNTY, MINNESOTA

N¹/₄ COR. SECTION 5 T31 R24

GRANITE MONUMENT DOWN 1.5' ±
 PLACED SHORTENED CAST IRON ON
 TOP AND TIED C.I. FLUSH WITH
 P.K.'S 2.00' N. & 2.00' E.
 C.I. 3.5' ± EAST OF CENTER LINE.



*1 60°
 9-21-79
 N. Larson
 B. Guetzko
 D. Naglak

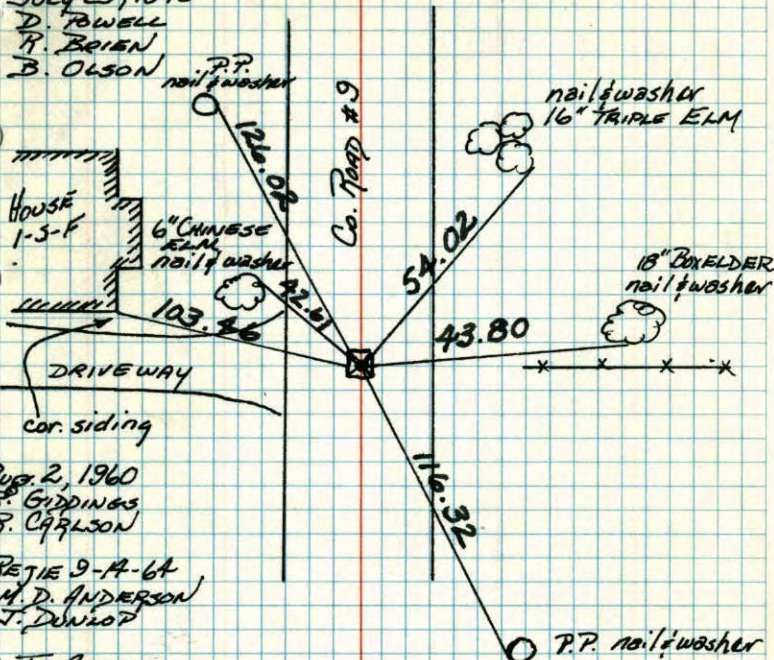
NO. 448

TELEPHONE

N¹/₄ COR. SEC 5 - T31 - R24

GRANITE MON. DOWN 1.5'. IRON OVER MON. DOWN .3'
 SET SHORT CAST IRON MONUMENT FLUSH ON TOP OF
 GRANITE. P.K.'S. 2.00' NORTH & EAST.

July 23, 1970
 D. POWELL
 R. BRIEN
 B. OLSON



Aug. 2, 1960
 R. GIDDINGS
 R. CARLSON
 RETIRED 9-14-64
 H. D. ANDERSON
 J. DANIEL

THE CHECK
 JUNE 16, 1977
 R. SANNEBUD
 S. BRIEN
 J. STEPHENS

TEMPERATURE CORRECTED
 AND HORIZONTALLY
 TAPED MEASUREMENTS

ROLAND W. ANDERSON
 COUNTY SURVEYOR
 ANOKA COUNTY, MINNESOTA

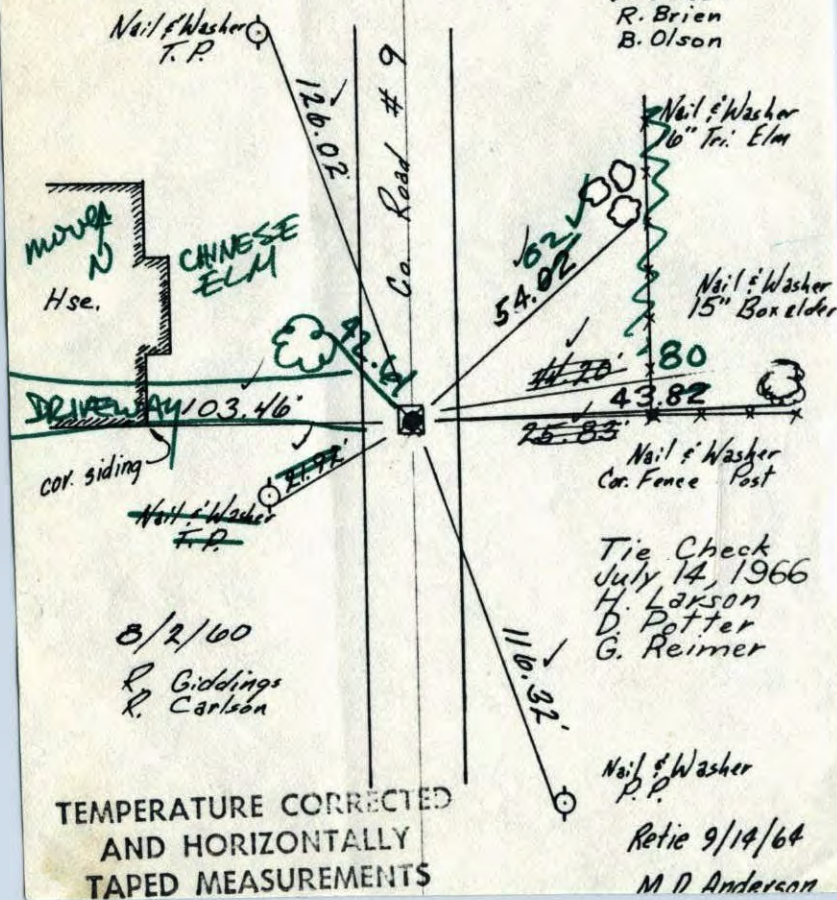
THE CHECK
6-16-77
R. SAUNDER & BRIEN
J. STEPHENS set PICK N & E

N¹/₄ Cor. RAISE
Sec 5 - T31 - R24

Granite Mon. down 1'±.

Iron over Mon down 3'
Set short Cast Iron Monument flush on top of
Granite. PK Nails 2.00' North + East. July 23, 1970

D. Powell
R. Brien
B. Olson

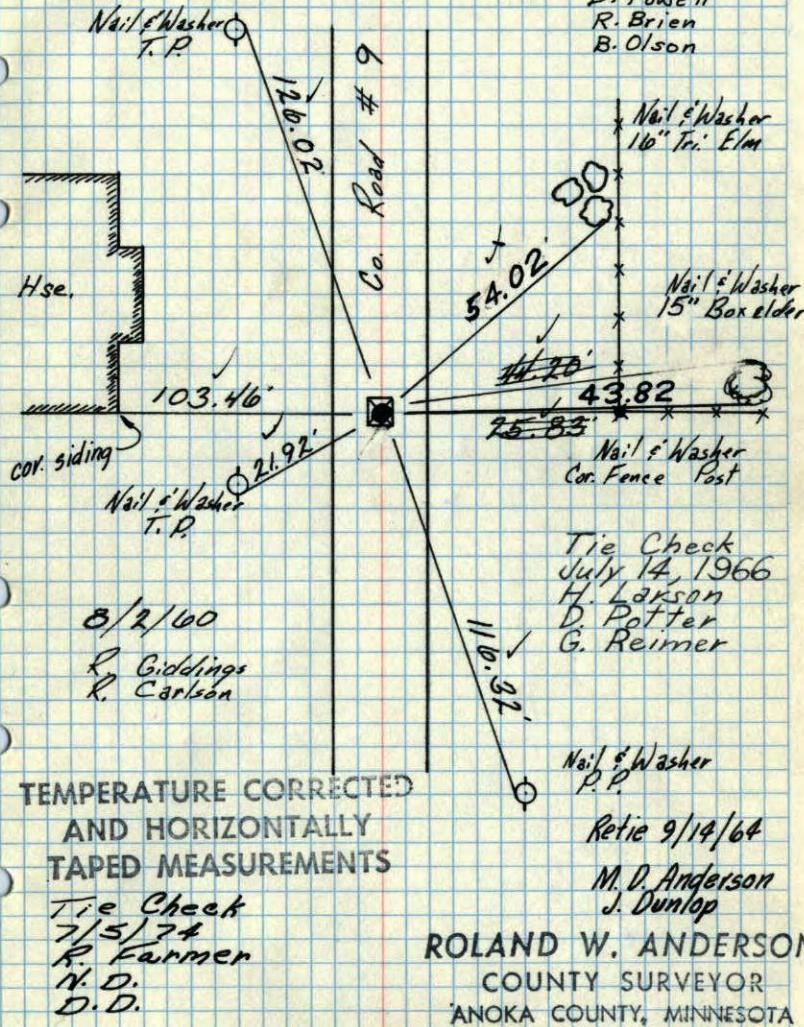


N¹/₄ Cor. Sec 5 - T31 - R24

Granite Mon. down 1'±.

Iron over Mon down 3'
Set short Cast Iron Monument flush on top of
Granite. PK Nails 2.00' North + East. July 23, 1970

D. Powell
R. Brien
B. Olson

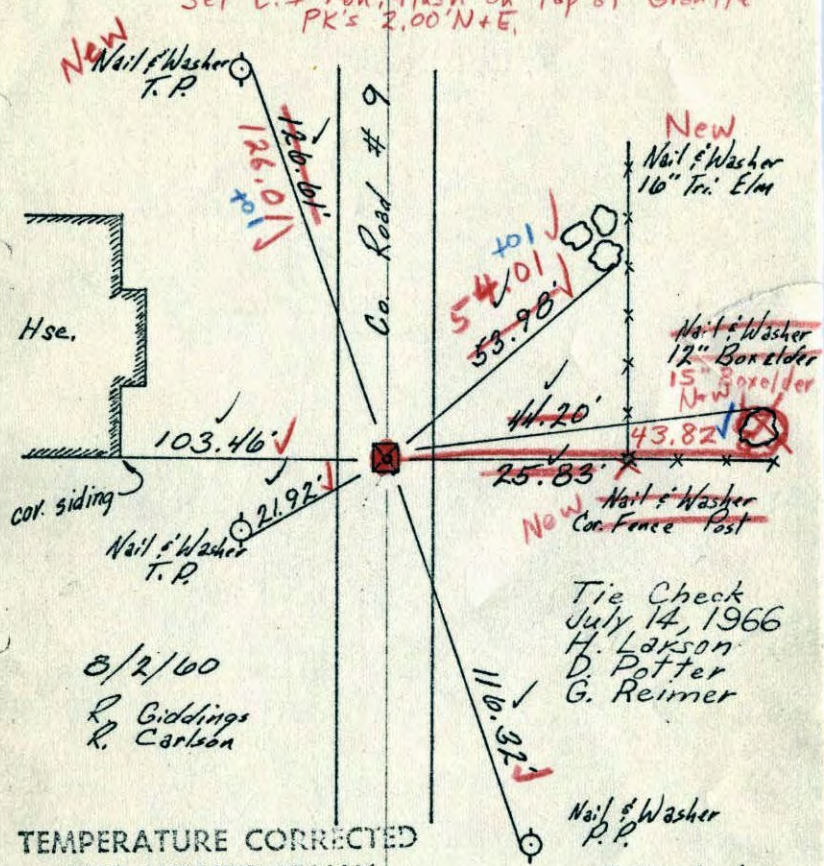


X

N¹/₄ Cor. Sec 5 - T 31 - R 24

Granite Mon. 1'±.

Iron over Mon, down 8' 0.2"
Set C.I. Mon, flush on top of Granite
PK's 2.00' N+E.



8/2/60
R. Giddings
R. Carlson

TEMPERATURE CORRECTED
AND HORIZONTALLY
TAPED MEASUREMENTS

7/23/70
#10-72°
D. Powell
R. Brien
B. Olson

68-42
35142
103.42

Tie Check
July 14, 1966
H. Lakson
D. Potter
G. Reimer

Nail & Washer
P.P.
Retie 9/14/64
M. D. Anderson
J. Dunlop

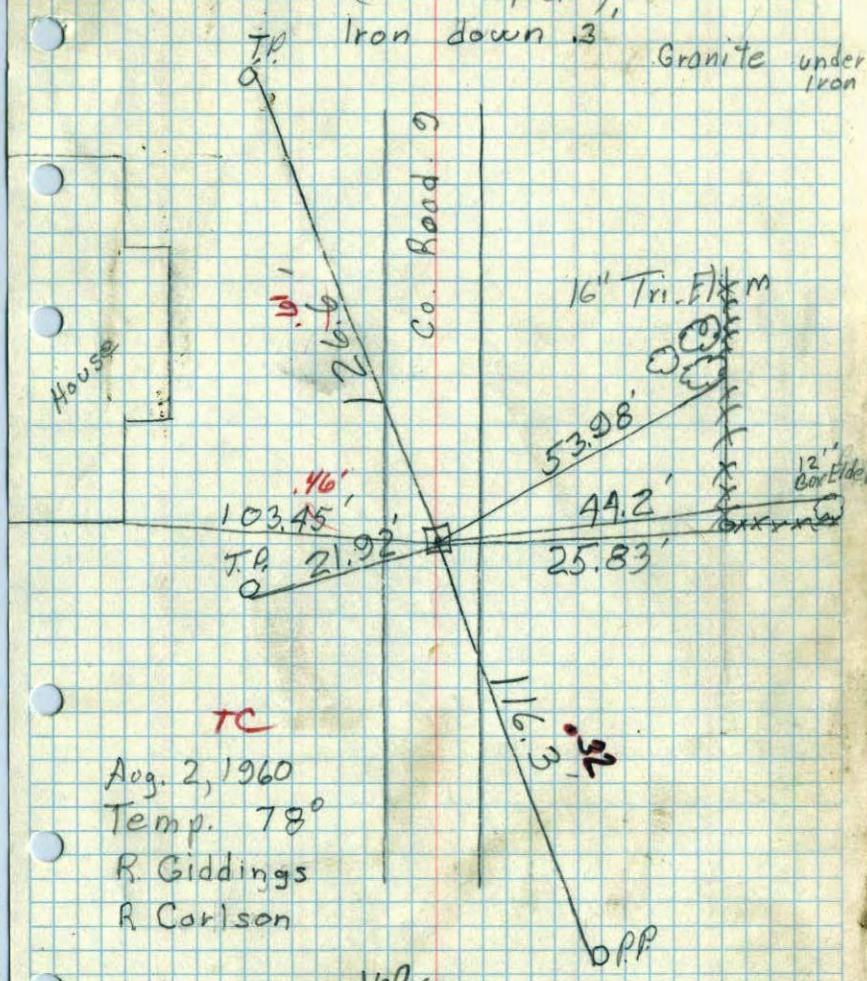
ROLAND W. ANDERSON
COUNTY SURVEYOR
ANOKA COUNTY, MINNESOTA

8.

N¹/₄ Corn. Sec. 5 T. 31, R 24

(Coon Rapids),
Iron down .3

Granite under
Iron



TC
Aug. 2, 1960
Temp. 78°
R. Giddings
R. Carlson

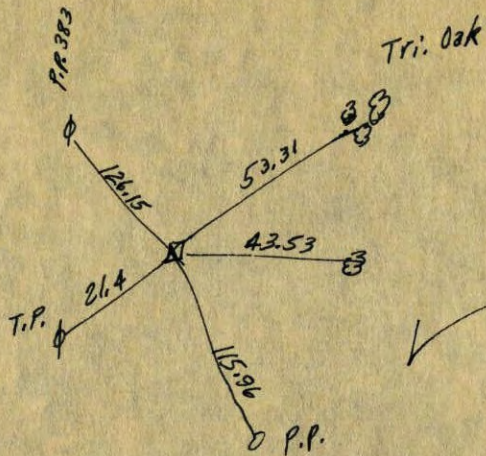
19/16/60

N 1/4 Corner Sec. 5, T31, R24

Granite Mon.

Down 1 1/2'

Nov. 1959



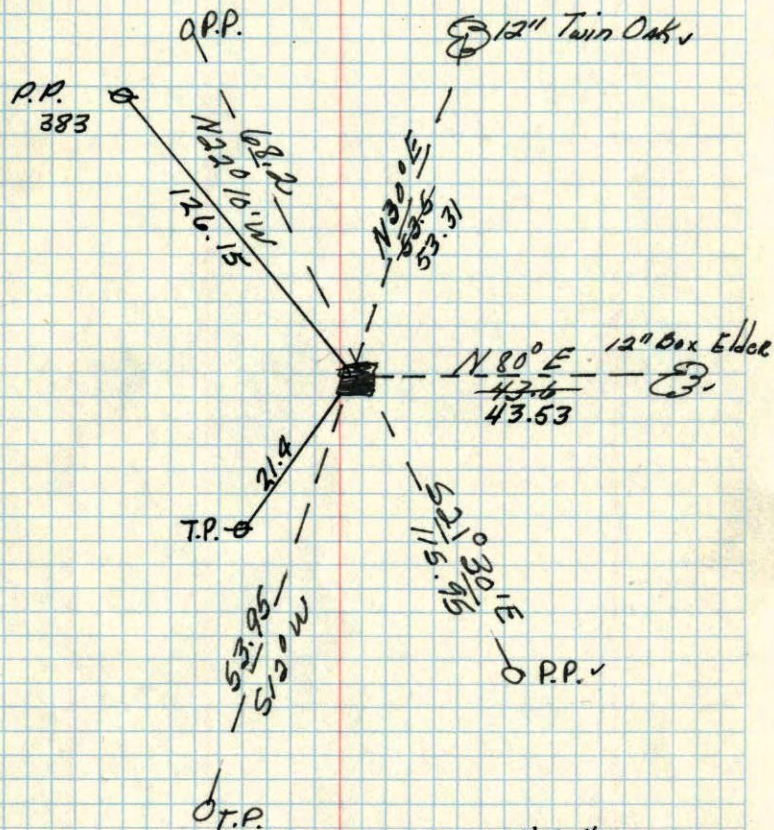
14

N.C. Houim.

OK. 14

N 1/4 corner of Sec. 5 T. 31 R. 24

Granite Mon. down 10' in E of traveled Round
Lake Road Set iron Pipe flush.



N.C. Houim
Nov 1959

8-9-55
C.F. Coulter

