

CERTIFICATE OF LOCATION OF GOVERNMENT CORNER

County of Anoka

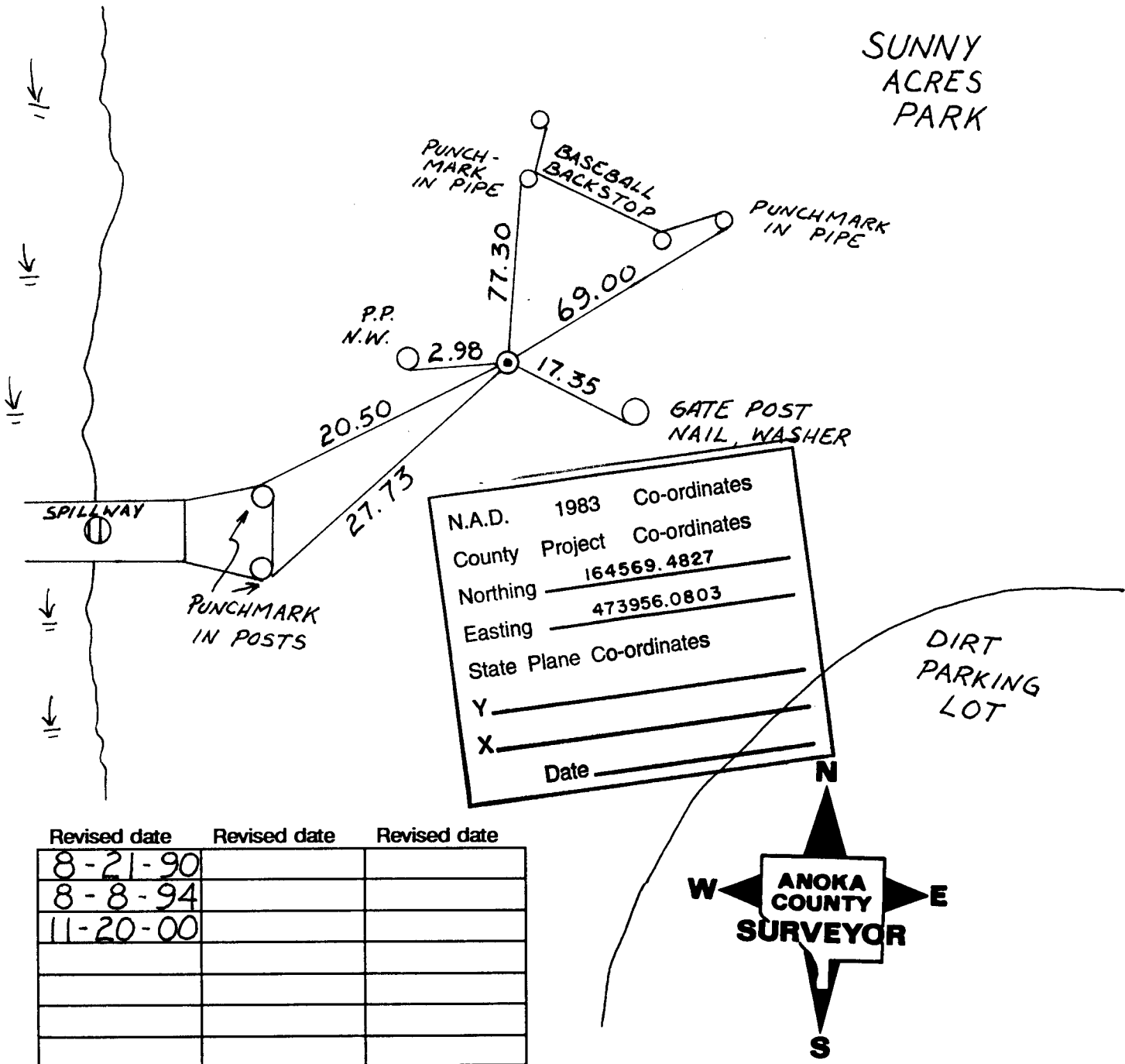
State of Minnesota

NORTHWEST Corner of Sec. 5 Township 31 Range 24

I hereby certify that on the 2 day of AUG., 1960, I found the described corner which was evidenced by CONC. MON.

and I further certify that to perpetuate the location of said corner, I did, at the exact location thereof, place a permanent marker consisting of CAST IRON MON.

which reference or witness monuments are located in the manner following:

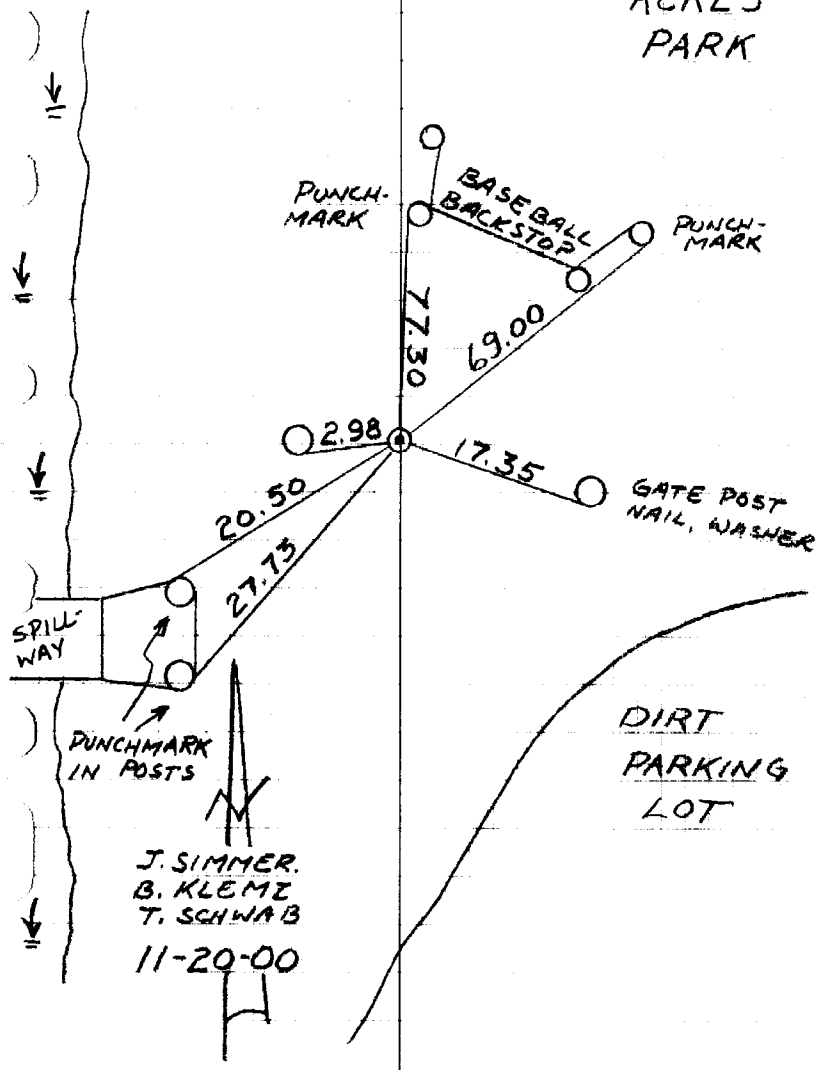


Revised date	Revised date	Revised date
8-21-90		
8-8-94		
11-20-00		

NORTHWEST SEC. 5 T31 R24
RETIED CAST IRON MON.
GPS.

SUNNY
ACRES
PARK

NATIONAL HIGHWAY
NO. 446

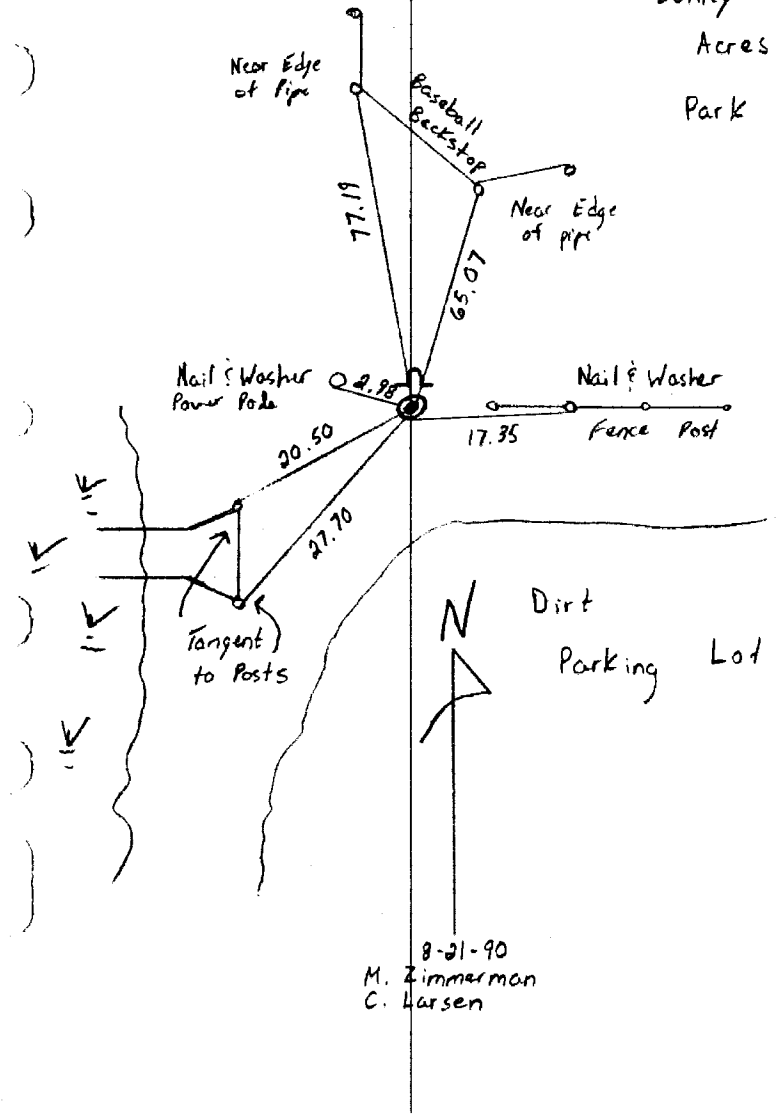


J. SIMMER.
B. KLEMEZ
T. SCHWAB
11-20-00

Northwest corner Sec. 5 T31 R24
Retied Cast Iron Monument
Sign & Post on North Side

Sunny
Acres
Park

TELEPHONE
NO. 448

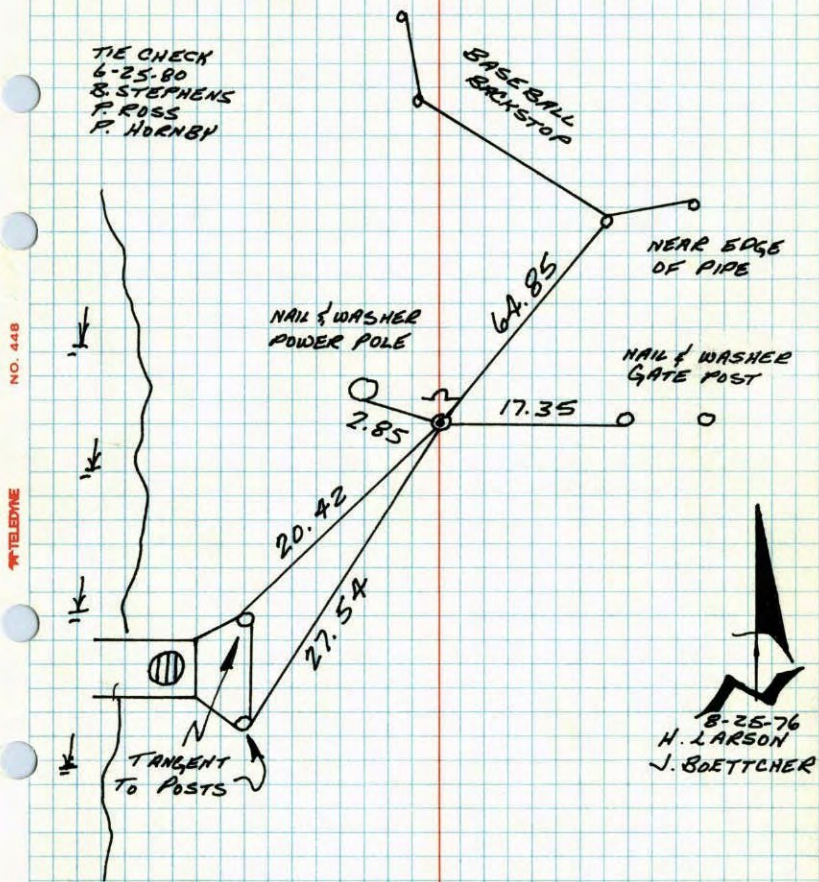


8-21-90
M. Zimmerman
C. Larsen

N.W. CORNER SECTION 5-T31-R24

SET CAST IRON MONUMENT AFTER CONSTRUCTION FROM AREA RESURVEY. CAST IRON FLUSH WITH SIGN AND POST ON NORTH SIDE.

TIE CHECK
6-25-80
B. STEPHENS
P. ROSS
P. HORNBY



8-26-76
H. LARSON
J. BOETTCHER

TEMPERATURE CORRECTED
AND HORIZONTALLY
TAPED MEASUREMENTS

ROLAND W. ANDERSON
COUNTY SURVEYOR
ANOKA COUNTY, MINNESOTA

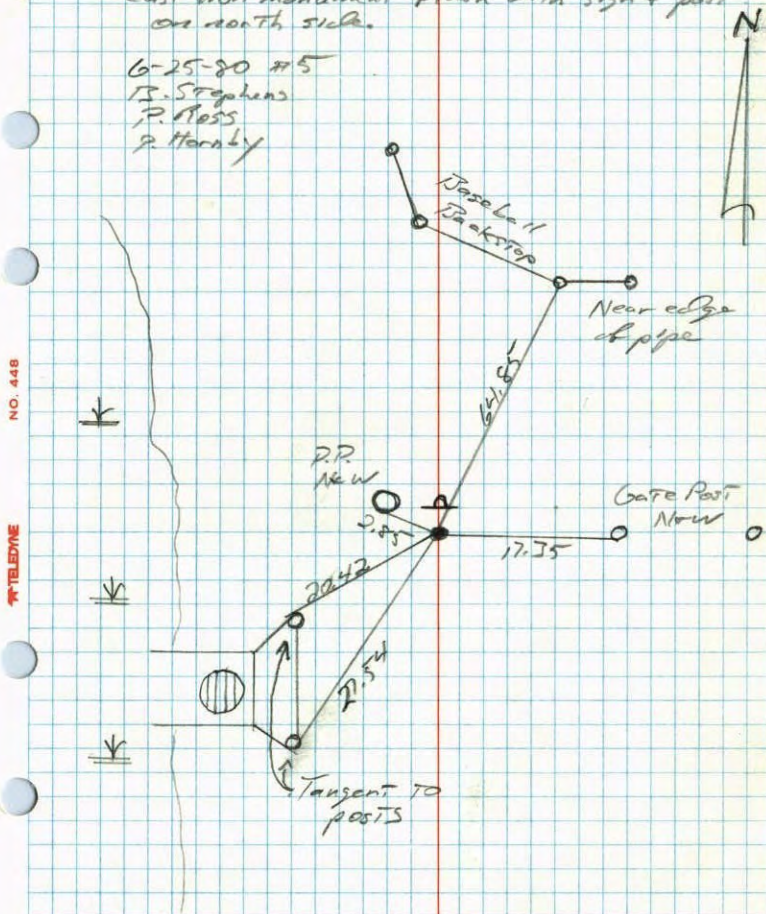
NO. 448

TELEPHONE

N.W. Cor. Sec. 5 T-31 R-24

Cast iron monument flush with sign & post on north side.

6-25-80 #5
B. Stephens
P. Ross
P. Hornby



NO. 448

TELEPHONE

TEMPERATURE CORRECTED
AND HORIZONTALLY
TAPED MEASUREMENTS

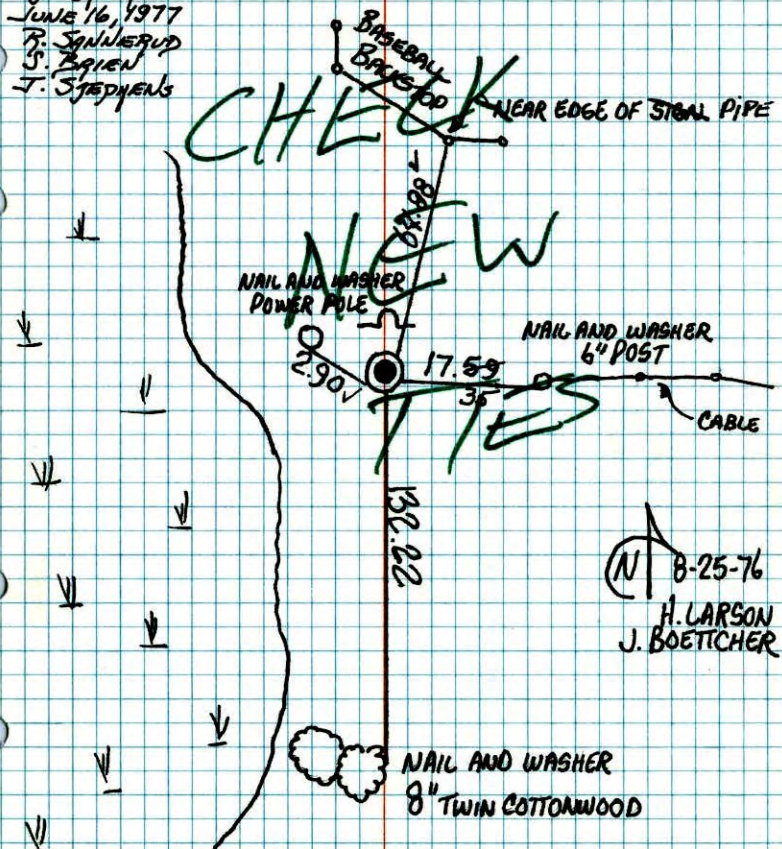
ROLAND W. ANDERSON
COUNTY SURVEYOR
ANOKA COUNTY, MINNESOTA

N.W. CORNER SECTION 5 T.31 R.24

BET CAST IRON MONUMENT AFTER CONSTRUCTION.

Re-SET FROM AREA RE-SURVEY. CAST IRON FLUSH WITH SIGN AND POST ON NORTH SIDE.

JUE CHEEK
JUNE 16, 1977
P. JANIKERUP
S. BQIEN
J. STEPHENS



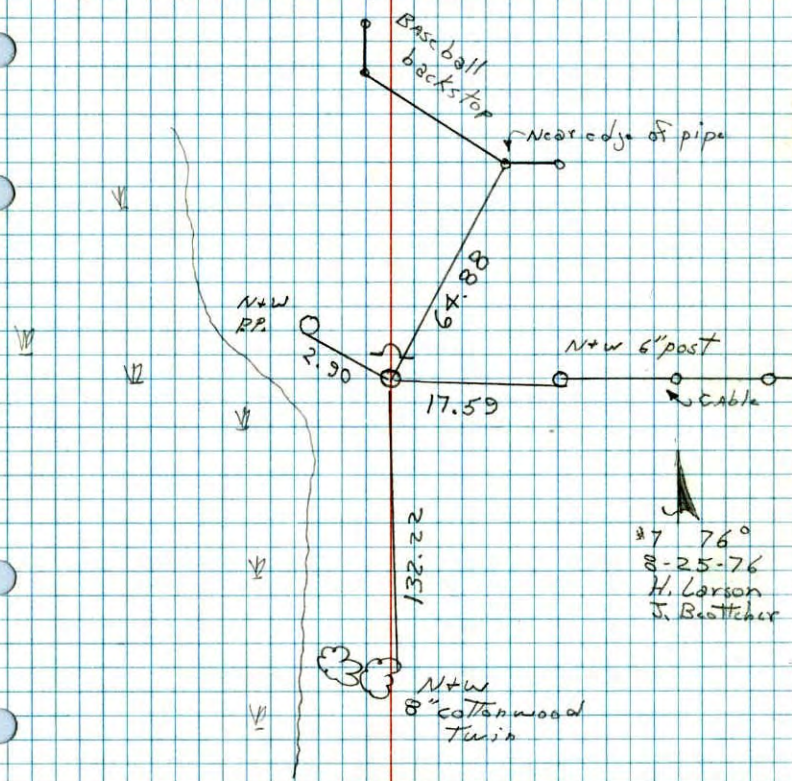
N 8-25-76
H. LARSON
J. BOETTCHER

TEMPERATURE CORRECTED
AND HORIZONTALLY
TAPED MEASUREMENTS

ROLAND W. ANDERSON
COUNTY SURVEYOR
ANOKA COUNTY, MINNESOTA

NW Cor. Sec. 5 T31 R24

Set cast iron monument after construction. Set from area survey cast iron flush with sign & post on North side

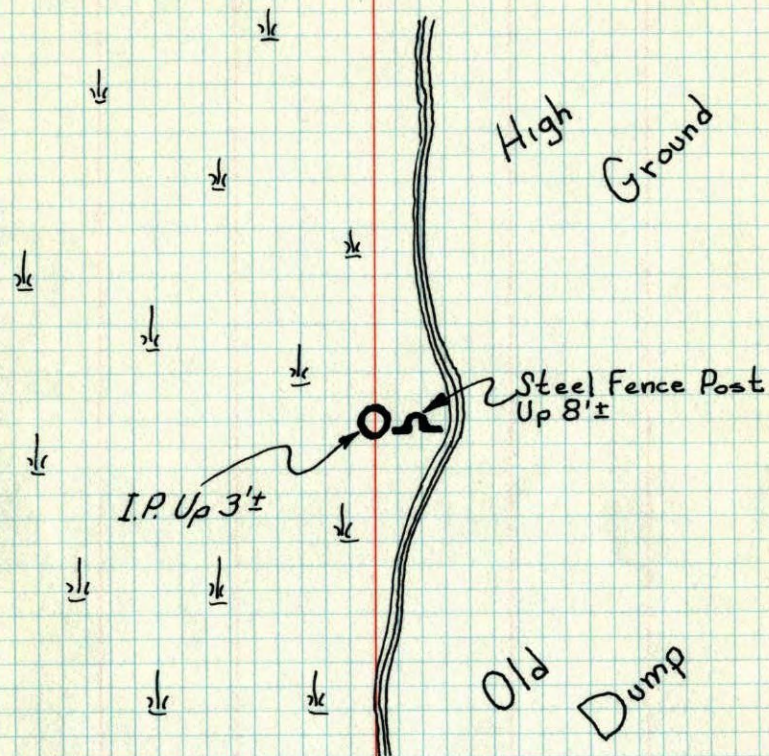


N 7-76°
8-25-76
H. Larson
J. Boettcher

N+W
8" Cottonwood
Twin

N.W. Cor. Sec. 5 - T31 - R24

Replaced Concrete Monument With Red & White Iron Pipe.



7-12-1974

H. Larson

J. Beottcher

B. Schaffer

Temp. 70°

Tape #14

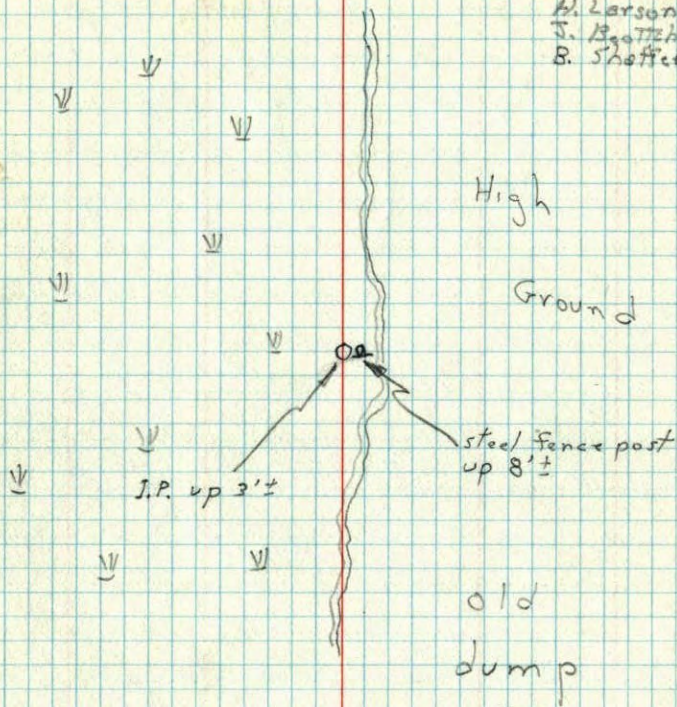
TEMPERATURE CORRECTED
AND HORIZONTALLY
TAPED MEASUREMENTS

ROLAND W. ANDERSON
COUNTY SURVEYOR
ANOKA COUNTY, MINNESOTA

NW Cor. Sec. 5 T31 R24

Replaced concrete monument with
red and white iron pipe

70° 7-12-74
 H. Larson
 J. Beottcher
 B. Schaffer

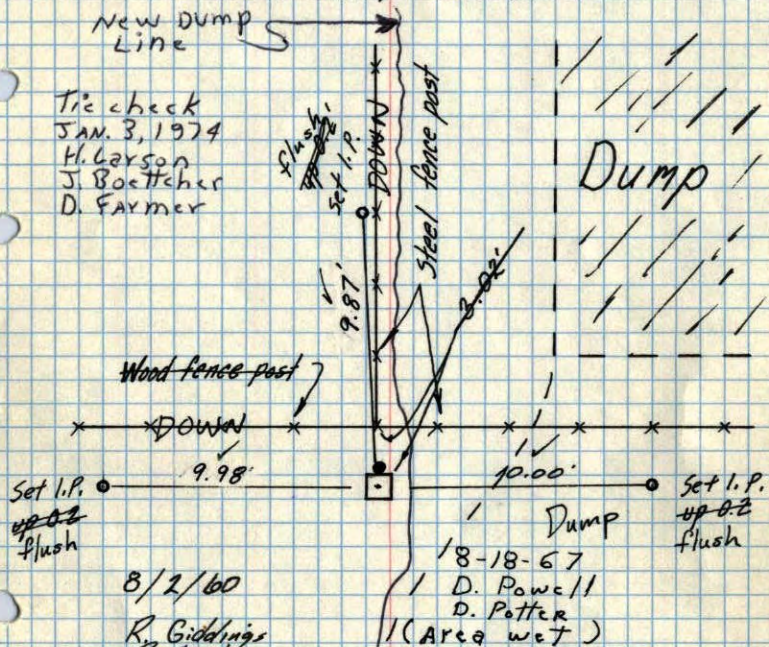


71
NW Cor Sec 5 - T31 - R 24

Conc. Man. Up 0.5' ± + Loose.
(Broken Off)
Iron on North Side
Steel Fence Post 2' East up 10' ±.
Cor. is 1' South & 2' W. of fence corner

New Dump Line

Tie check
Jan. 3, 1974
H. Larson
J. Boettcher
D. Farmer



Set I.P. 9.98' 10.00' Set I.P. up 0.2 flush

8/2/60

R. Giddings
R. Carlson

Retie 9/16/64

M. D. Anderson
G. Todd

Tie Check
July 23, 1970
D. Powell
R. Brien
B. Olson

Tie Check
7/1/74
R. Farmer

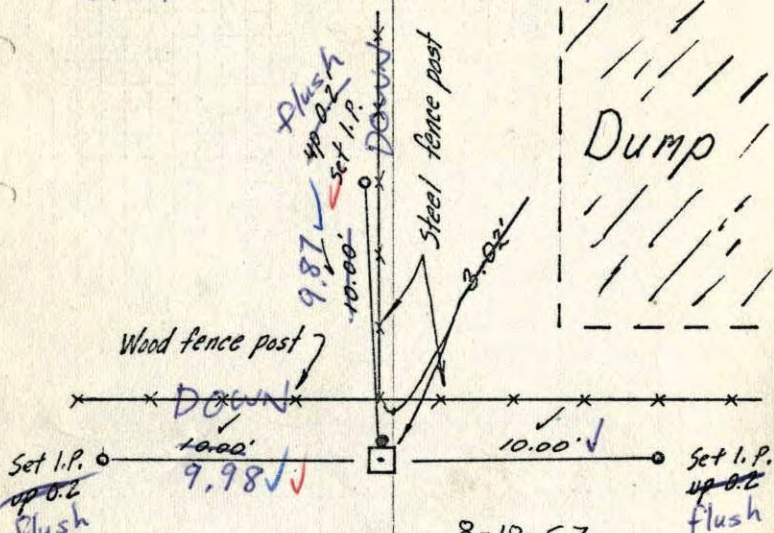
TEMPERATURE CORRECTED
AND HORIZONTALLY
TAPED MEASUREMENTS

ROLAND W. ANDERSON
COUNTY SURVEYOR
ANOKA COUNTY, MINNESOTA

9
NW Cor Sec 5 - T31 - R 24

Conc. Man. Up to 0.5' ±.
(Broken Off)
Iron on North Side Loose

Cor. is 1' South & 2' W. of fence corner
Steel Fence Post 2' ± East up 10' ±



Set I.P. 9.98' 10.00' Set I.P. up 0.2 flush

8/2/60

R. Giddings
R. Carlson

Retie 9/16/64

M. D. Anderson
G. Todd

7/23/70
#10-72
D. Powell
R. Brien
B. Olson

8-18-67
D. Powell
D. Potter
(Area wet)

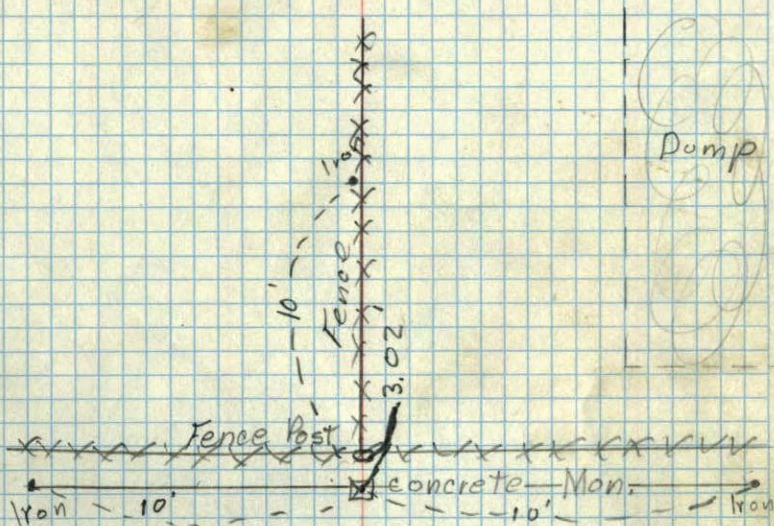
TEMPERATURE CORRECTED
AND HORIZONTALLY
TAPED MEASUREMENTS

ROLAND W. ANDERSON
COUNTY SURVEYOR
ANOKA COUNTY, MINNESOTA

N.W. Corn. Sec. 5, T. 31, R. 24

Coon Rapids

(1' up) Concrete Mon. (broken off)
Iron on North side



R.C.

Aug. 2, 1960

Temp. 90°

R. Giddings

R. Carlson

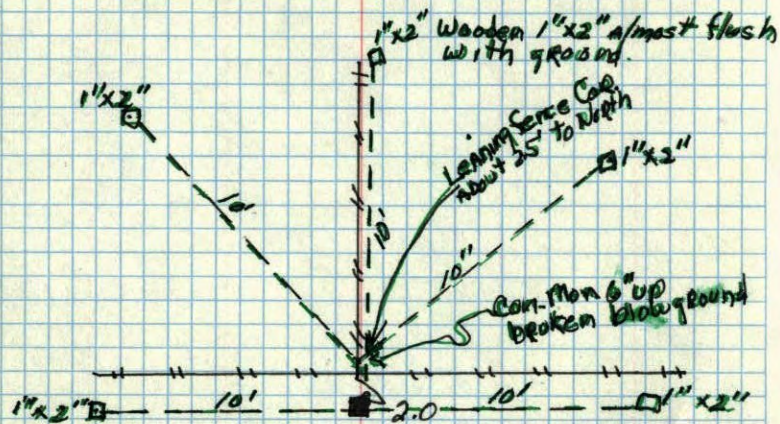
9/16/80

J.R. 22

NW corner of Sec. 5 T. 31 R. 24

Concrete Monuments 4" up.

Ties By
W. Lundstrom
July 1956



Dec. 10, 1940
Cartwright