

CERTIFICATE OF LOCATION OF GOVERNMENT CORNER

County of Anoka

State of Minnesota

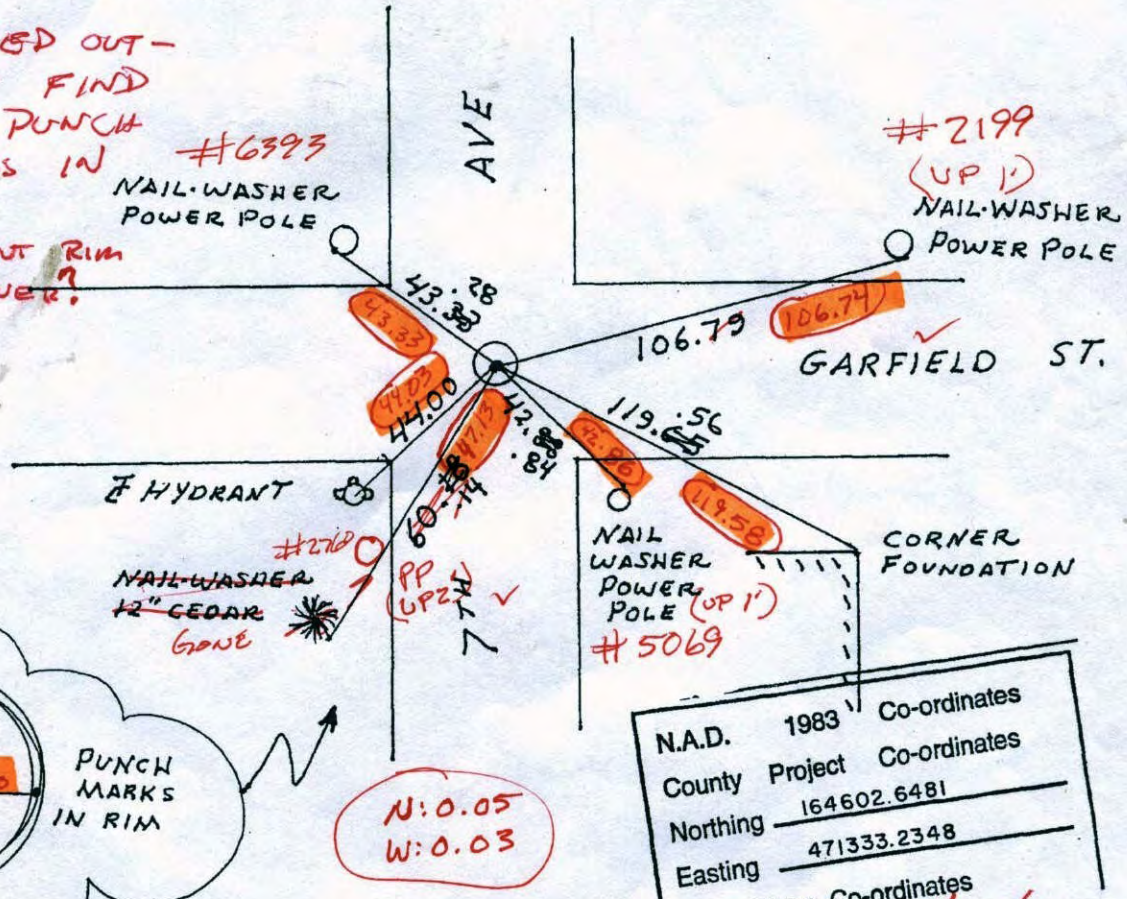
NORTH 1/4 Corner of Sec. 6 Township 31 Range 24

I hereby certify that on the 25 day of FEB, 19 60, I found the described corner which was evidenced by 6" x 6" GRANITE

and I further certify that to perpetuate the location of said corner, I did, at the exact location thereof, place a permanent marker consisting of CORNER FALLS ON MANHOLE COVER. PUNCH MARKS N-E-W+S ON RIM

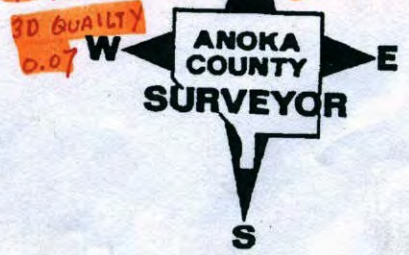
3/29/60 which reference or witness monuments are located in the manner following:

3/29/60
~~H-X~~ CHECKED OUT -
 DIDN'T FIND
 ANY PUNCH
 MARKS IN
 RIM!
 DIFFERENT RIM
 AND COVER?



N.A.D.	1983	Co-ordinates
County	Project	Co-ordinates
Northing	164602.6481	
Easting	471333.2348	

218-11 35 34 N 11/17/00
 VRS COORDS TO NOW POS. ON M.H.
164602.661
471333.217



Revised date	Revised date	Revised date
6-16-86		
10-28-88		
8-20-90		
8-22-94		
1-2-98		
11-22-00		

CERTIFICATE OF LOCATION OF GOVERNMENT CORNER

County of Anoka

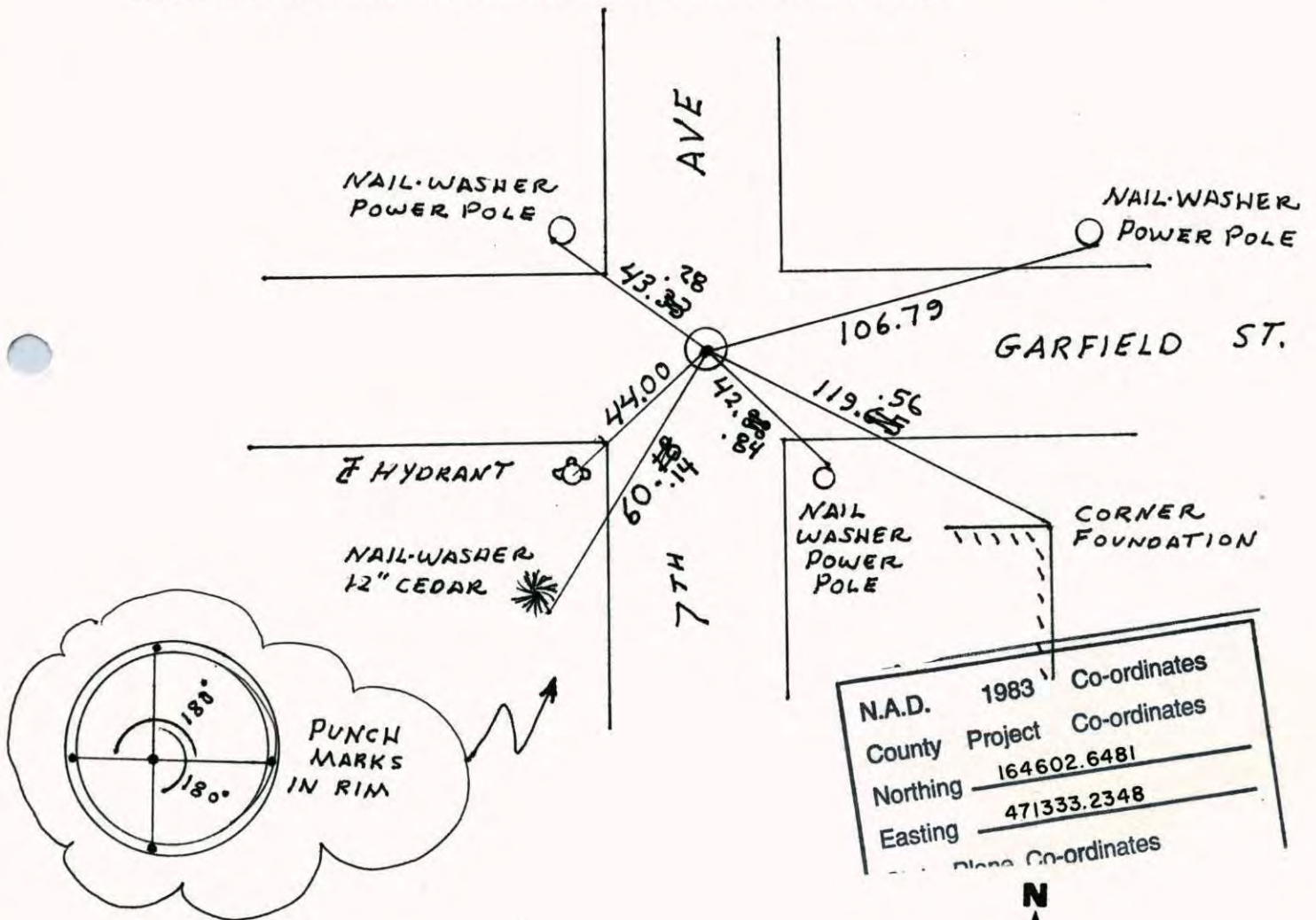
State of Minnesota

NORTH 1/4 Corner of Sec. 6 Township 31 Range 24

I hereby certify that on the 25 day of FEB, 19 60, I found the described corner which was evidenced by 6" x 6" GRANITE

and I further certify that to perpetuate the location of said corner, I did, at the exact location thereof, place a permanent marker consisting of CORNER FALLS ON MANHOLE COVER. PUNCH MARKS N-E-W+S ON RIM

which reference or witness monuments are located in the manner following:



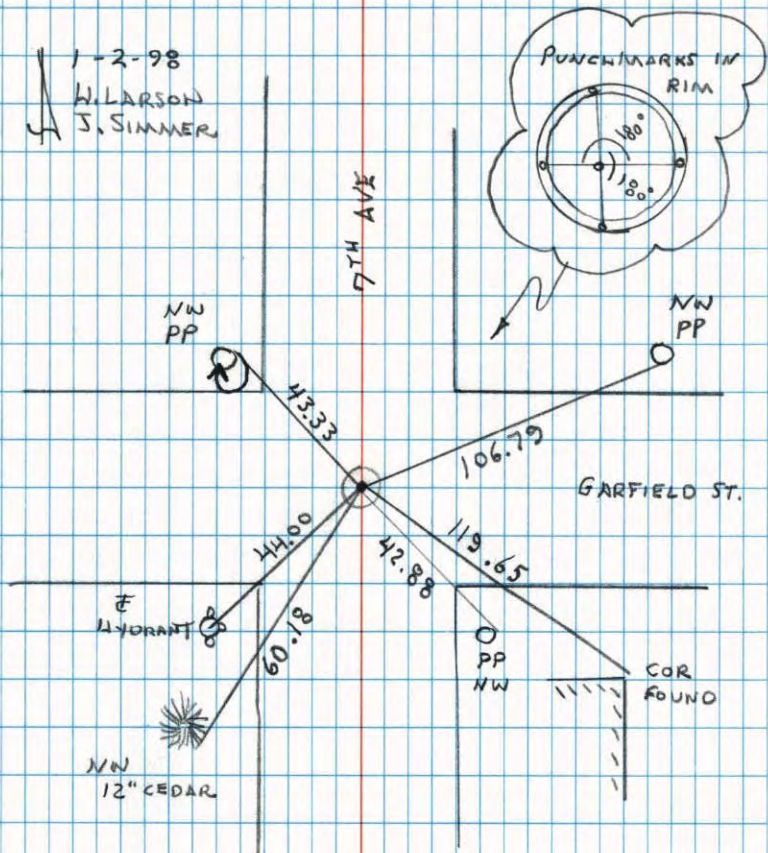
Revised date	Revised date	Revised date
6-16-86		
10-28-88		
8-20-90		
8-22-94		
1-2-98		
11-22-00		



N 1/4 CORNER SECTION 6 T31 R24

RESET AND RETIED FROM RESURVEY

1-2-98
H. LARSON
J. SIMMER



NATIONAL PRINTING NO. 416

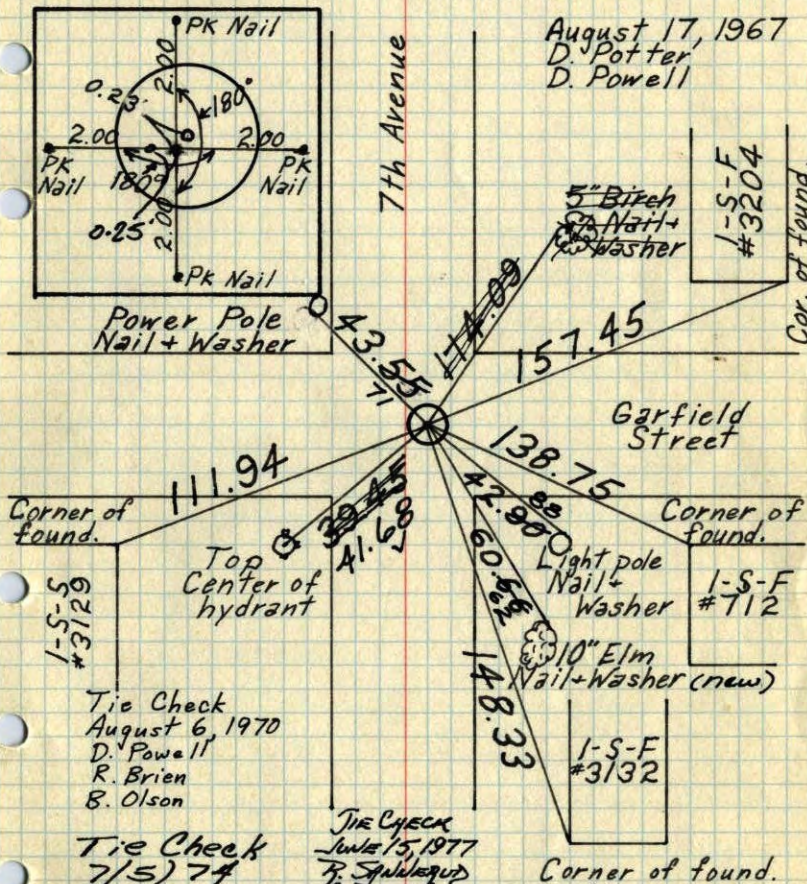
N 1/4 Cor. Sec. 6 - T31 - R24

Corner falls on manhole

PK's 2.00' N, S, E, + W.

File notches in rim incorrect

August 17, 1967
D. Potter
D. Powell



Tie Check
August 6, 1970
D. Powell
R. Brien
B. Olson

Tie Check
7/5/74
R. FARMER
N. D.
D. D.

TIE CHECK
July 15, 1977
R. Spalding
S. BRIEN
J. STEPHENS

TIE CHECK
7-14-80
B. STEPHENS, P. ROSS, P. HORNBY

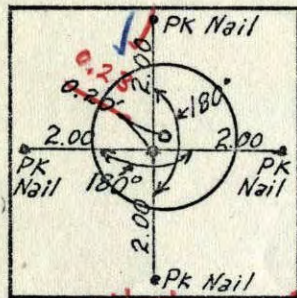
TEMPERATURE CORRECTED AND HORIZONTALLY TAPED MEASUREMENTS
ROLAND W. ANDERSON
COUNTY SURVEYOR
ANOKA COUNTY, MINNESOTA

N¹/₄ Cor. Sec. 6-T31-R24

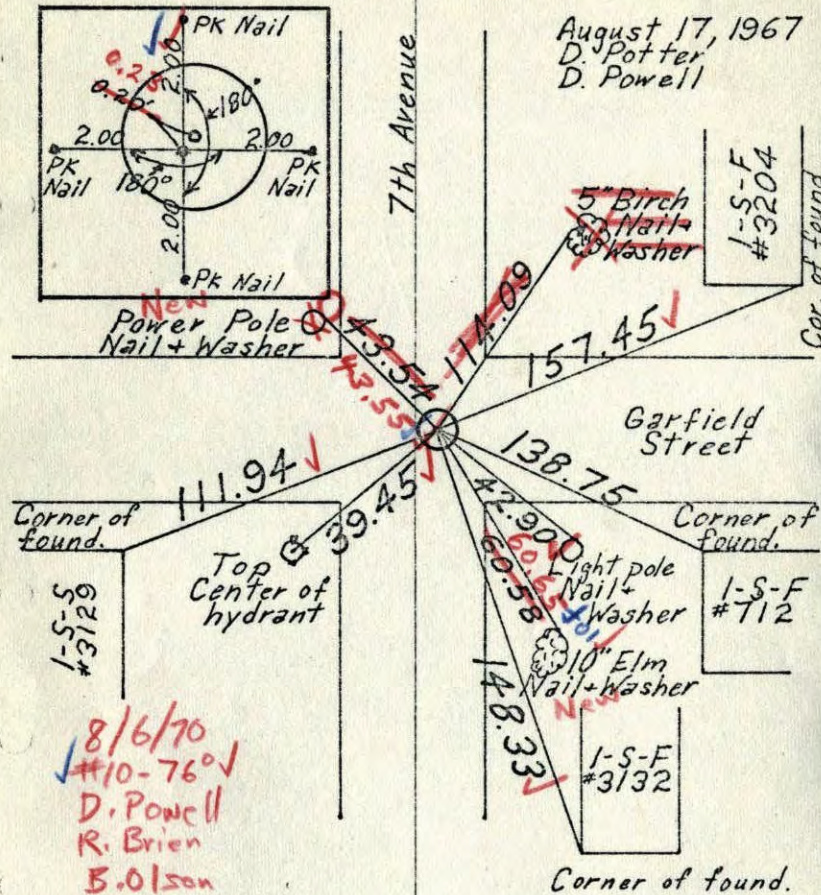
Corner falls on manhole

PK's 2.00' N, S, E, + W.

File notches in rim incorrect



August 17, 1967
D. Potter,
D. Powell



8/6/70
#10-76°
D. Powell
R. Brien
B. Olson

TEMPERATURE CORRECTED
AND HORIZONTALLY
TAPED MEASUREMENTS

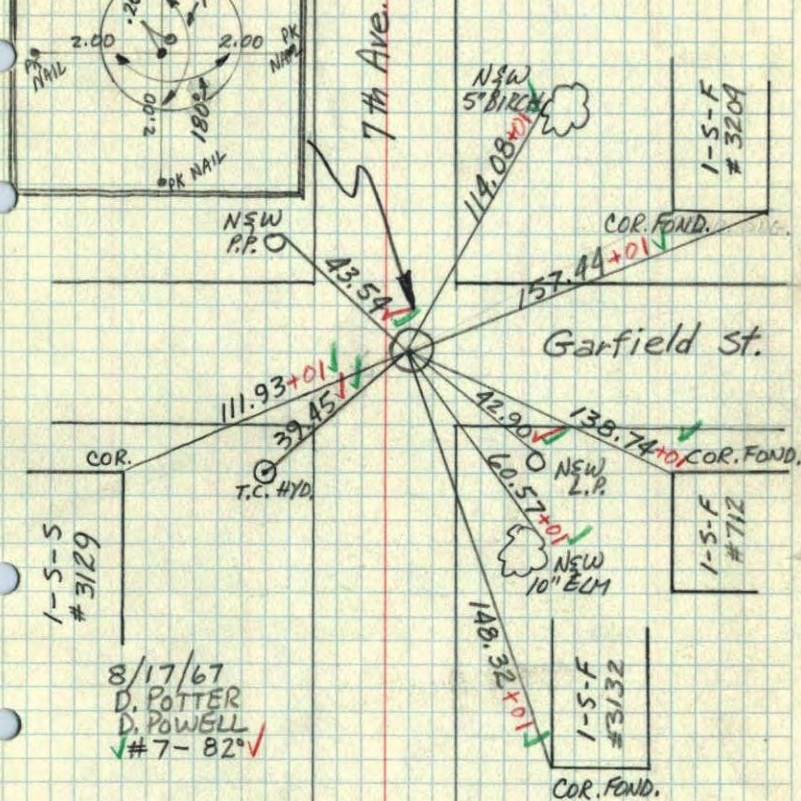
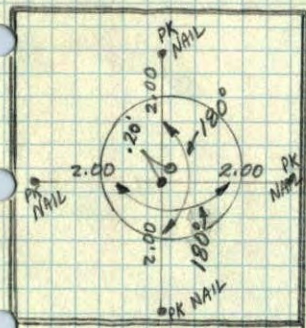
ROLAND W. ANDERSON
COUNTY SURVEYOR
ANOKA COUNTY, MINNESOTA

N¹/₄ COR. SEC. 6, T31, R24

FALLS ON MANHOLE

PK'S N, S, E, W,

THE FILE NOTCHES IN
RIM INCORRECT



8/17/67
D. POTTER
D. POWELL
#7-82°

N 1/4 Corner Sec 6, T 31 R 24

Retied corner. Corner falls on manhole

P.K. spk's on N. S. E. & W.

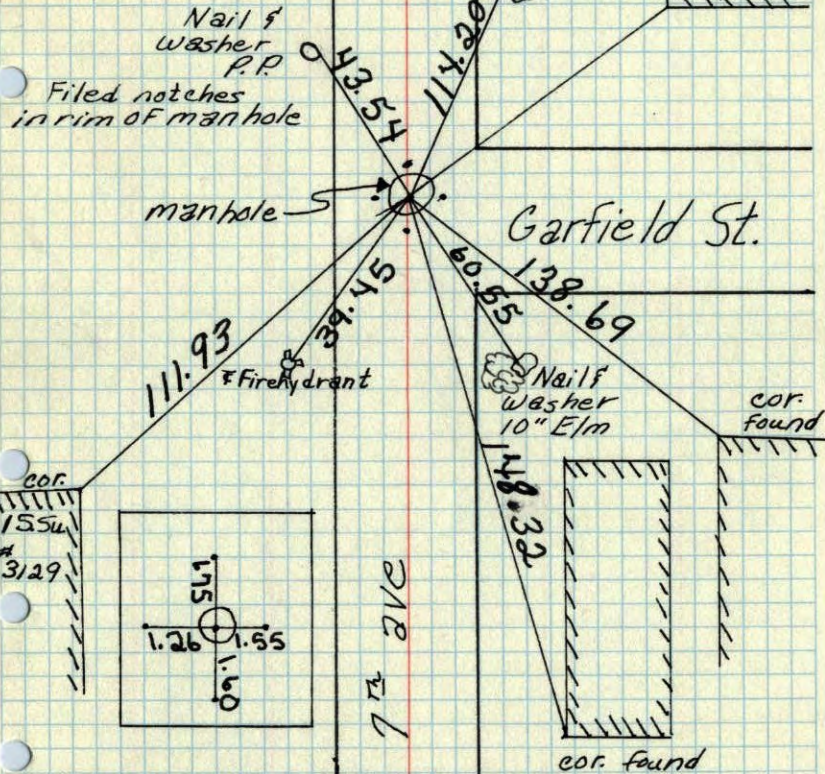
7-26-66

#1 88°

H. Larson

D. Patter

G. Reimer



TEMPERATURE CORRECTED
AND HORIZONTALLY
TAPED MEASUREMENTS

ROLAND W. ANDERSON
COUNTY SURVEYOR
ANOKA COUNTY, MINNESOTA

N 1/4 Cor. Sec. 6 T 31 R 24

Retied corner. corner falls on manhole

P.K. spk's on N. S. E. & W.

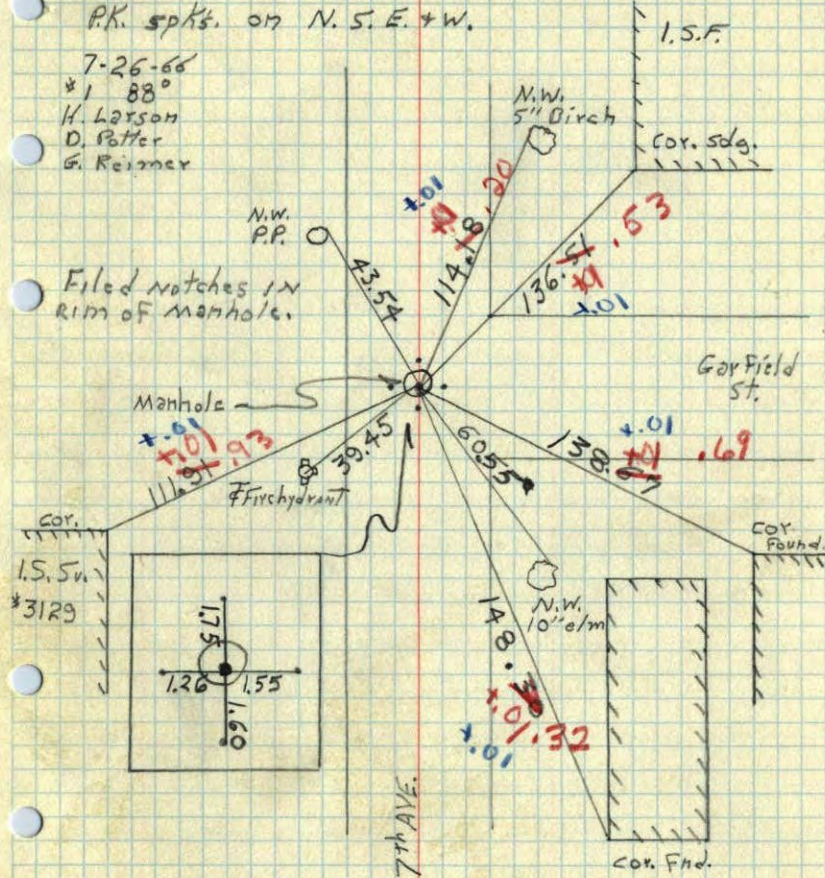
7-26-66

#1 88°

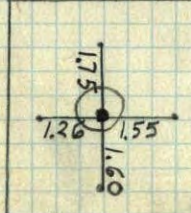
H. Larson

D. Patter

G. Reimer



1.55
#3129



7th AVE.

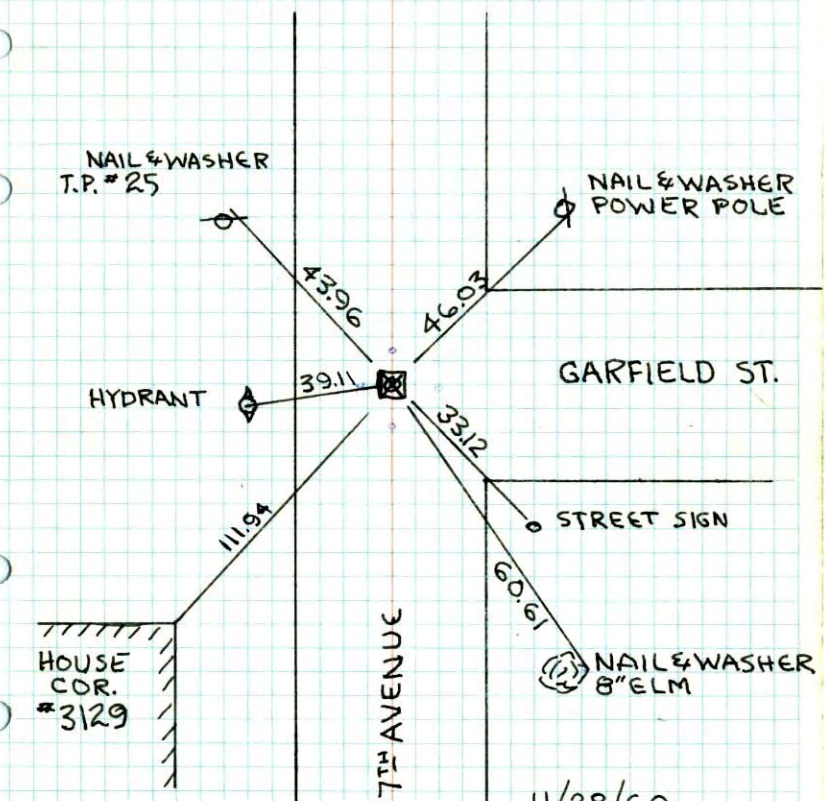
Cor. Fnd.

PD

N¹/₄ COR. SEC. 6, T. 31, R. 24

GRANITE MON. 6" x 6" DOWN 14"
IRON PIPE 3/4" x 12" DIRECTLY OVER MON.

Granite Removed -
Sanitary Sewer Manhole in Place



TEMPERATURE CORRECTED
AND HORIZONTALLY
TAPED MEASUREMENTS

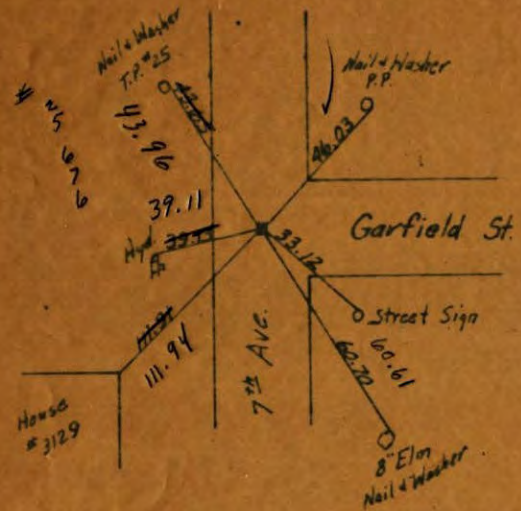
11/28/60
BILL RODGERS
DENNIS POTTER

ROLAND W. ANDERSON
COUNTY SURVEYOR
ANOKA COUNTY, MINNESOTA

N¹/₄ Corner Sec 6 T31 R24

Granite 6" x 6" down 14"

Iron Pipe 3/4" x 12" directly over Center of Mon.



TEMPERATURE CORRECTED
AND HORIZONTALLY
TAPED MEASUREMENTS

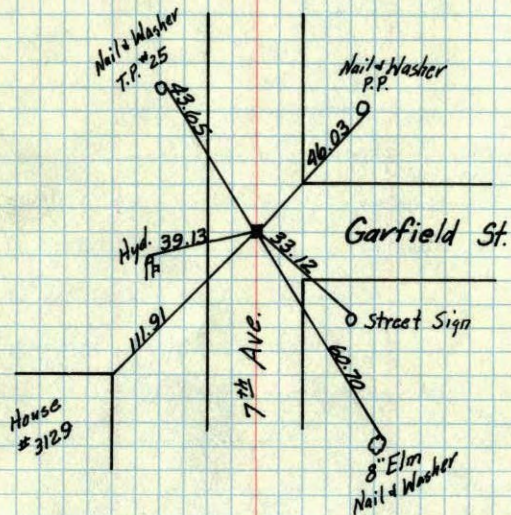
Feb. 25, 1960

ROLAND W. ANDERSON
COUNTY SURVEYOR
ANOKA COUNTY, MINNESOTA

N 1/4 Corner Sec. 6 T31 R24

Granite 6"x6" down 14"

Iron Pipe 3/4"x12" directly over Center of Mon.



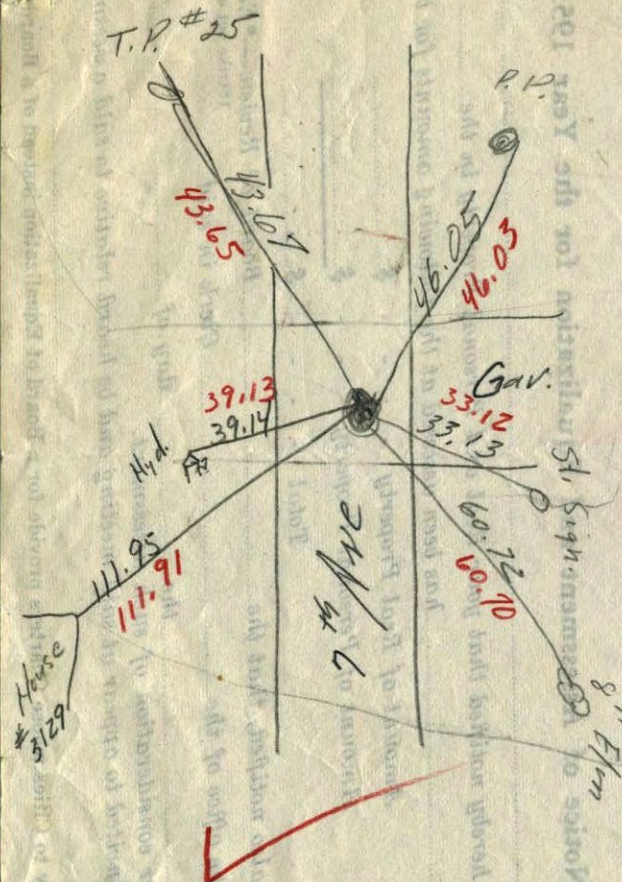
TEMPERATURE CORRECTED
AND HORIZONTALLY
TAPED MEASUREMENTS

Feb. 25, 1960

ROLAND W. ANDERSON
COUNTY SURVEYOR
ANOKA COUNTY, MINNESOTA

N 1/4 Cor. Sec. 6 T31 R24

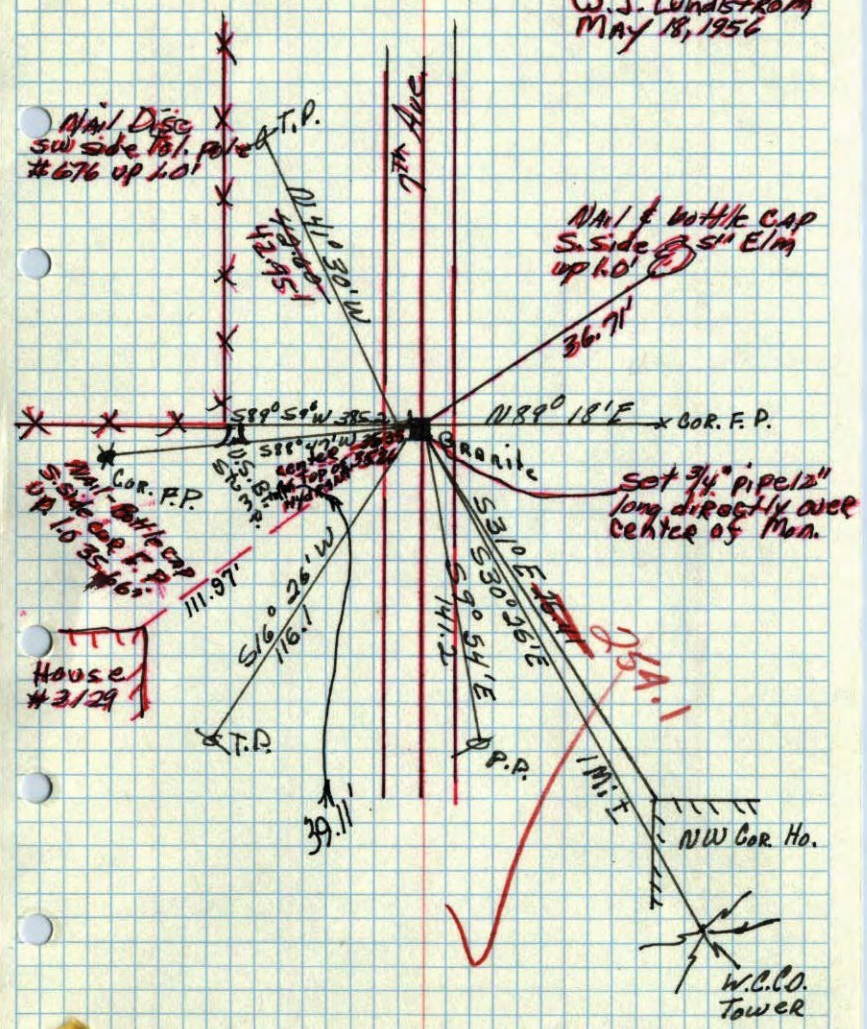
Pinched I.P.



temp. 15
2/17/60

N¹/₄ corner of Sec. 6 T. 31 R. 24
Granite 6" x 6" down 14"

Re-Tied By
W.J. Lundstrom
May 18, 1956



April 10, 1943
Coetwright

~~S¹/₄ CORNER OF SEC. 31, T. 32, R. 24~~
GRANITE

