

CERTIFICATE OF LOCATION OF GOVERNMENT CORNER

County of Anoka

State of Minnesota

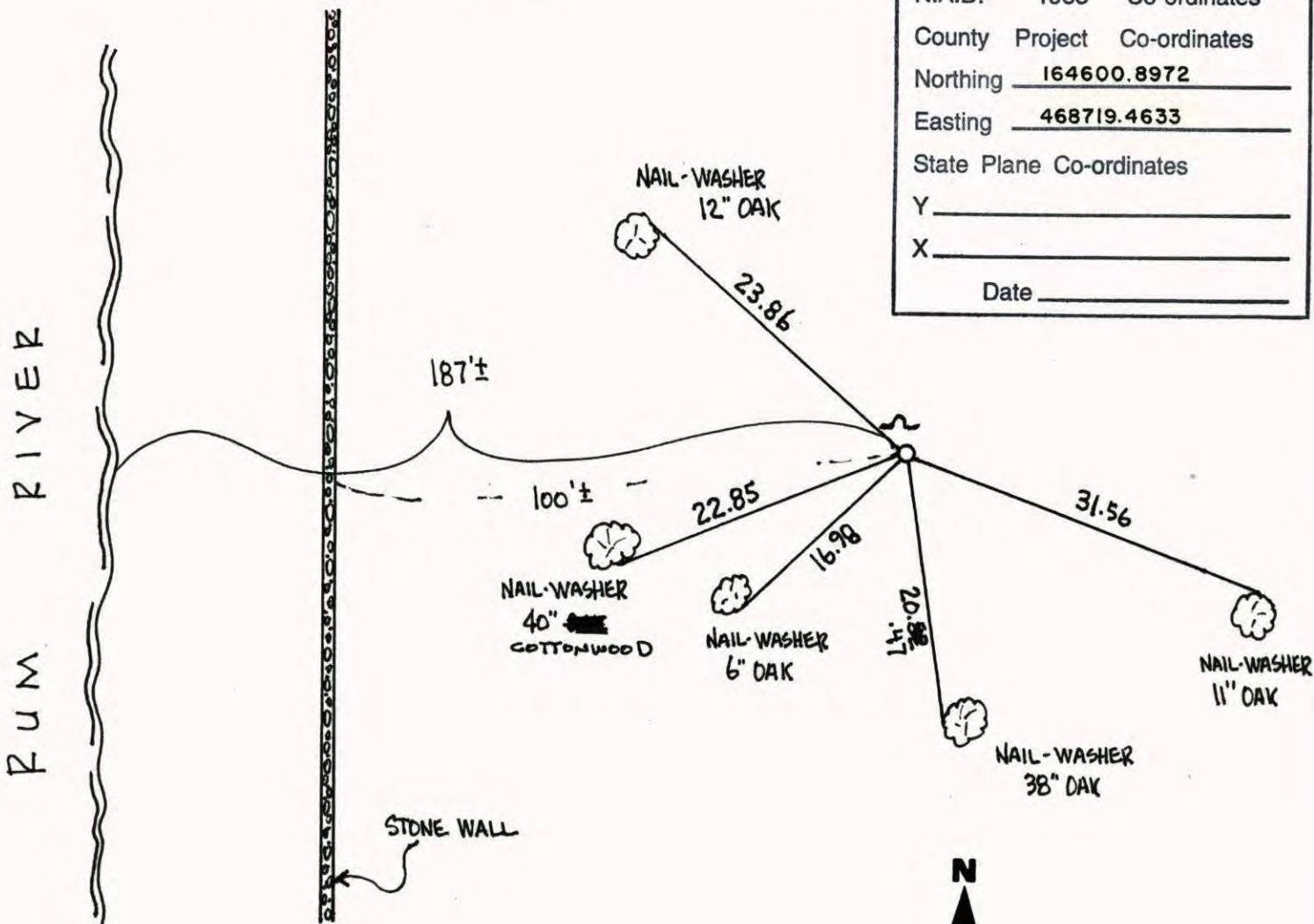
WITNESS CORNER
ON THE N. LINE Corner of Sec. 6 Township 31 Range 24
OF THE N.W. 1/4

I hereby certify that on the 12TH day of AUGUST, 19 60, I found the described corner which was evidenced by CONCRETE MONUMENT

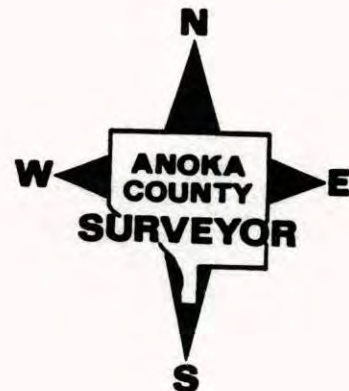
and I further certify that to perpetuate the location of said corner, I did, at the exact location thereof, place a permanent marker consisting of CAST IRON MONUMENT
SIGN & POST ON NORTH SIDE.

which reference or witness monuments are located in the manner following:

N.A.D.	1983	Co-ordinates
County	Project	Co-ordinates
Northing	<u>164600.8972</u>	
Easting	<u>468719.4633</u>	
State Plane Co-ordinates	Y _____	
	X _____	
Date	_____	



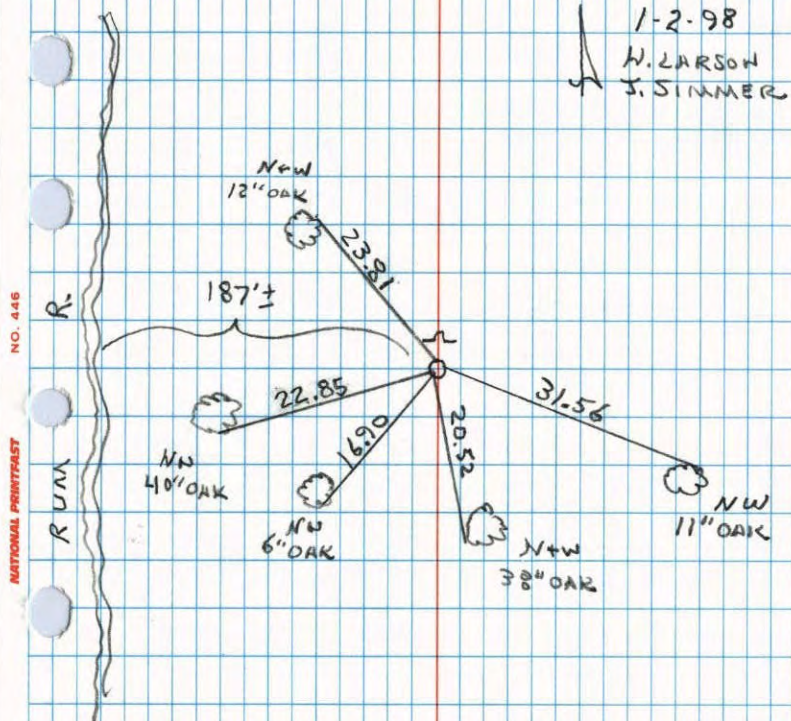
Revised date	Revised date	Revised date
11-9-83		
6-16-86		
5-30-91		
8-19-94		
1-2-98		
11-21-00		



WC ON N. LINE OF SEC. 6 T31 R24

RETIRED CAST IRON MONUMENT

SIGN + POST ON NORTH SIDE

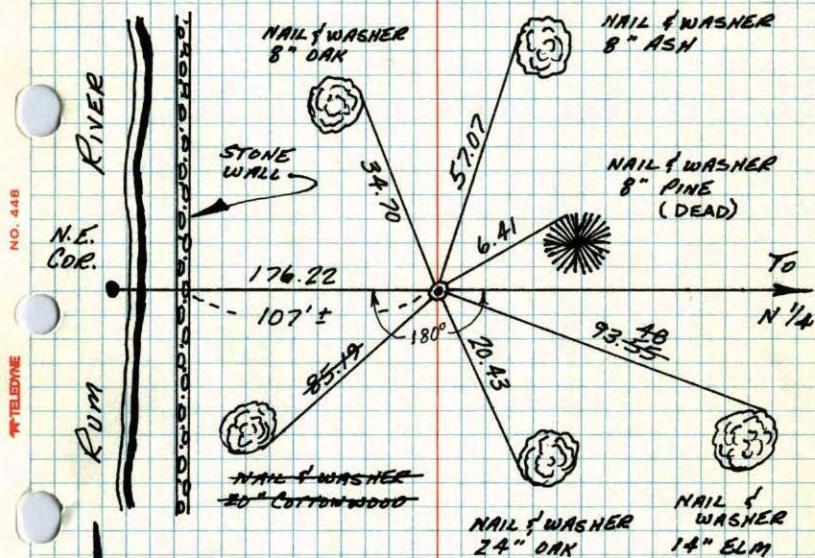


NO. 446

NATIONAL PRINTFAST

WITNESS CORNER ON NORTH LINE
SECTION 6-T31-R24REPLACED CONCRETE MONUMENT FOUND IN 1960
WITH CAST IRON MONUMENT JULY 23, 1965
M.D. ANDERSON
J. DUNLOP

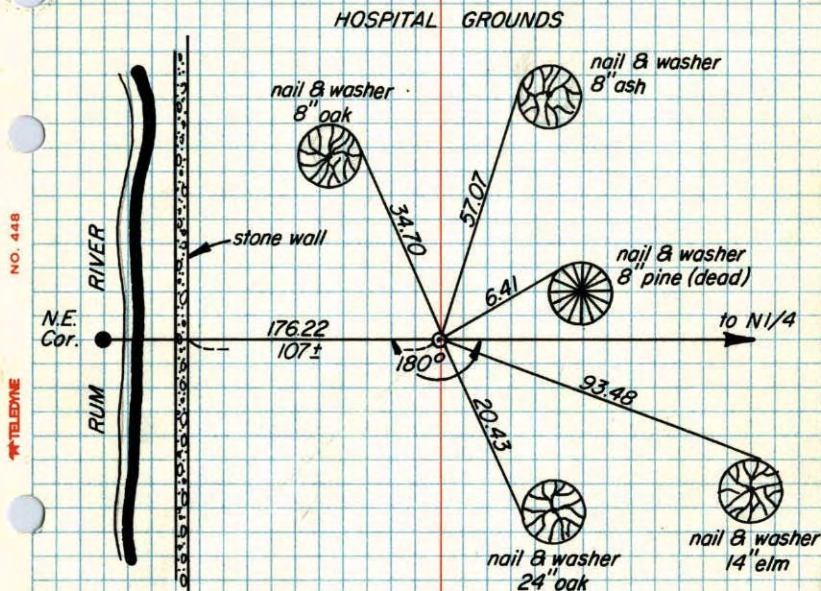
HOSPITAL GROUNDS

1 MAY 79
N. LARSON
B. GUETZKO
D. MAGLAKTIE CHECK
7-10-80
B. STEPHENS
P. ROSS
P. HORNBYTEMPERATURE CORRECTED
AND HORIZONTALLY
TAPED MEASUREMENTSROLAND W. ANDERSON
COUNTY SURVEYOR
ANOKA COUNTY, MINNESOTA

Witness Corner on North Line Section 6 - T31 - R24

Replaced concrete monument found in 1960 with
cast iron monument

July 23, 1965
M.D. Anderson
J. Dunlop



5/1/79
H. Larson
B. Guetzko
D. Naglak

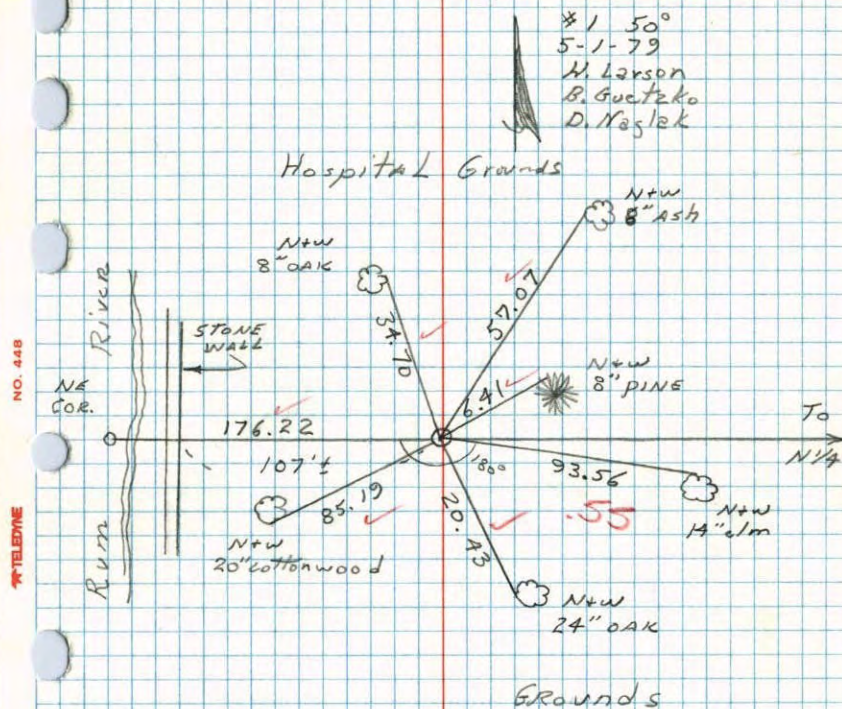
Tie check
7/10/80
B. Stephens
P. Ross
P. Hornby

TEMPERATURE CORRECTED
AND HORIZONTALLY
TAPED MEASUREMENTS

ROLAND W. ANDERSON
COUNTY SURVEYOR
ANOKA COUNTY, MINNESOTA

W.C. ON NORTH LINE SEC. 6 T31 R24

Replaced concrete monument found
in 1960 with cast iron monument
July 23 1965 M.D. Anderson + J. Dunlop.



*1 50°
5-1-79
H. Larson
B. Guetzko
D. Naglak

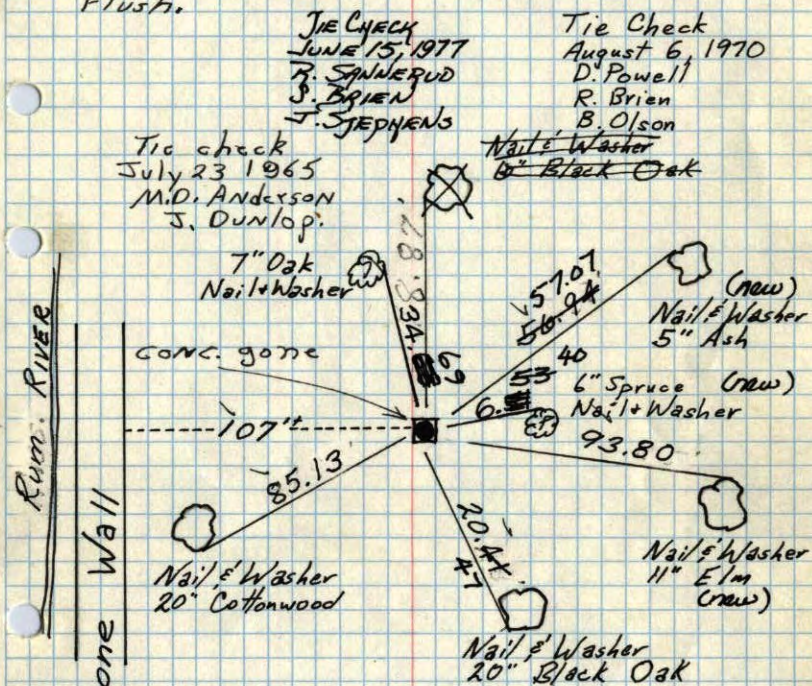
Witness Corner on

13

North Line Sec 6-T31-R24

Conc. Mon. Up 0.8'

Replaced with cast iron monument.
Flush.



TIE CHECK
JUNE 13, 1977
R. SPANNERUD
J. BRIEN
J. STEPHENS

Tie Check
August 6, 1970
D. Powell
R. Brien
B. Olson

Tie check
July 23 1965
M.D. Anderson
J. Dunlop.

Nail & Washer
6" Black Oak

7" Oak
Nail & Washer

Conc. gone

Nail & Washer
20" Cottonwood

Nail & Washer
11" Elm
(new)

Nail & Washer
20" Black Oak

Temp. 85°

8/12/60

Potter
Giddings

TEMPERATURE CORRECTED
AND HORIZONTALLY
TAPED MEASUREMENTS

Tie Check
July 27, 1966
H. Larson
D. Potter
G. Reimer

Tie Check
7/1/74
R. Farmer

ROLAND W. ANDERSON
COUNTY SURVEYOR
ANOKA COUNTY, MINNESOTA

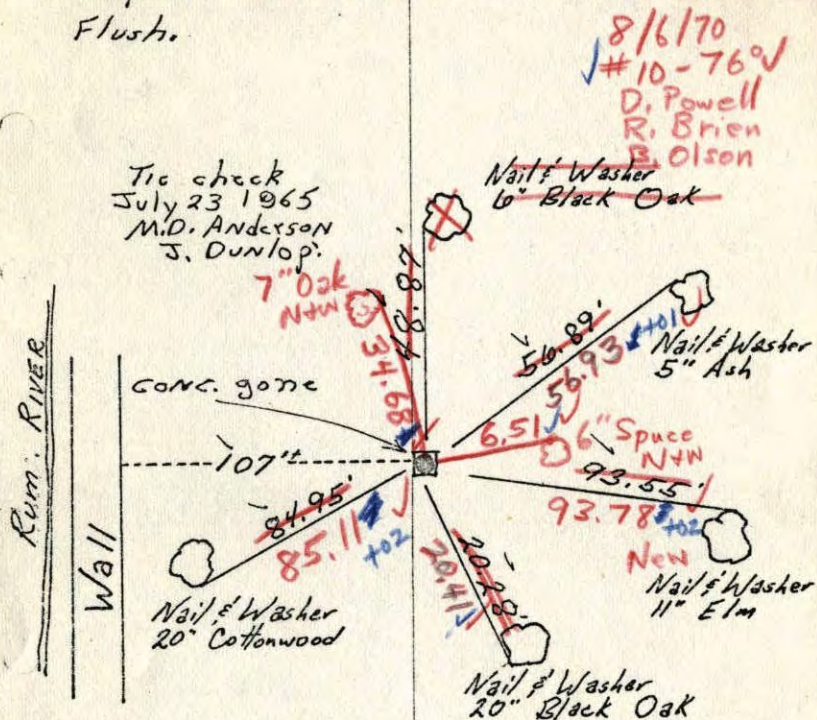
Witness Corner on

11

North Line Sec 6-T31-R24

Conc. Mon. Up 0.8'

Replaced with cast iron monument.
Flush.



Tie check
July 23 1965
M.D. Anderson
J. Dunlop.

Nail & Washer
6" Black Oak

Conc. gone

Nail & Washer
20" Cottonwood

Nail & Washer
11" Elm
(new)

Nail & Washer
20" Black Oak

Temp. 85°

8/12/60

Potter
Giddings

TEMPERATURE CORRECTED
AND HORIZONTALLY
TAPED MEASUREMENTS

Tie Check
July 27, 1966
H. Larson
D. Potter
G. Reimer

ROLAND W. ANDERSON
COUNTY SURVEYOR
ANOKA COUNTY, MINNESOTA

8/6/70
#10-76°
D. Powell
R. Brien
B. Olson

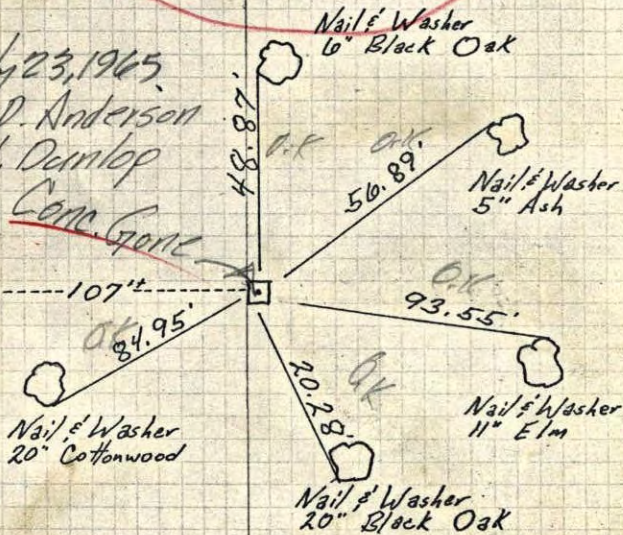
Witness Corner on
 North Line Sec 6-T31-R24
 Conc. Mon. Up 0.8'

Replaced Conc Mon. with
 cast Iron Monument
 flush

July 23, 1965
 M.D. Anderson
 J. Dunlop

River: RIVER

Wall



Temp. 85°

8/12/60

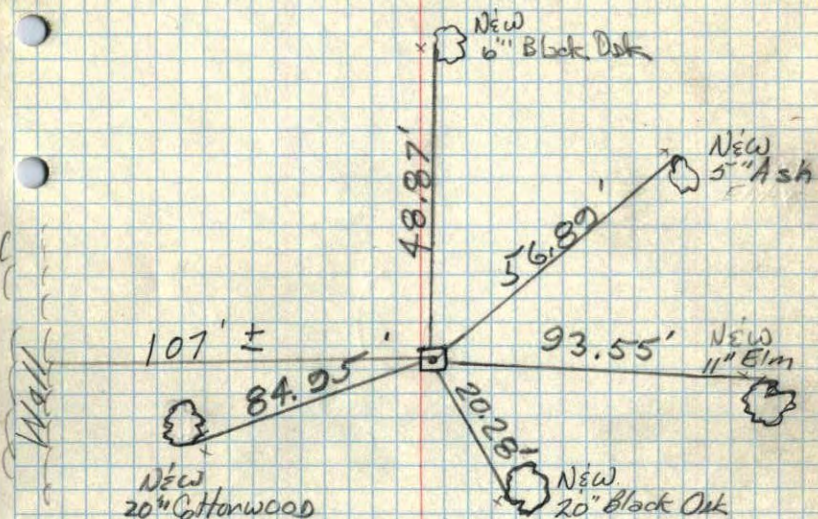
Potter
 Giddings

Entered
 H.L.

TEMPERATURE CORRECTED.
 AND HORIZONTALLY
 TAPED MEASUREMENTS

ROLAND W. ANDERSON
 COUNTY SURVEYOR
 ANOKA COUNTY, MINNESOTA

NW cor.
 #6 on N. side of Sec. 6, T31, R24
 Conc. Mon. Up 0.8'



Potter
 Giddings

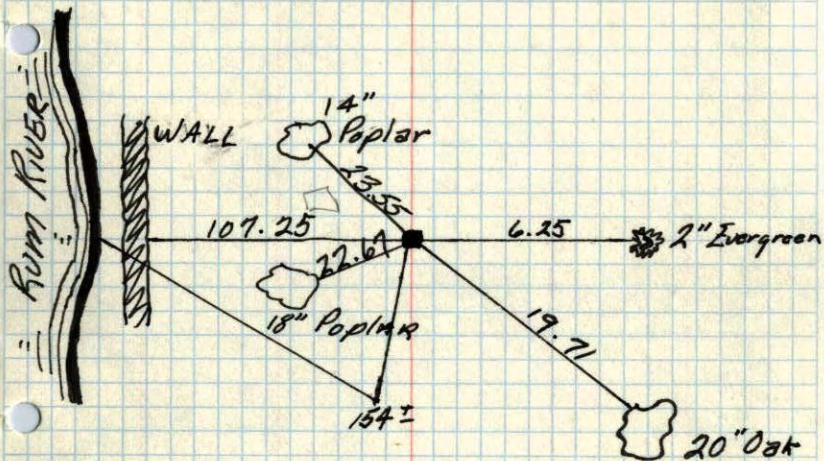
8/12/60
 85°

9/6/60

24B

M.C. on N. Line Sec 6, T31, R24

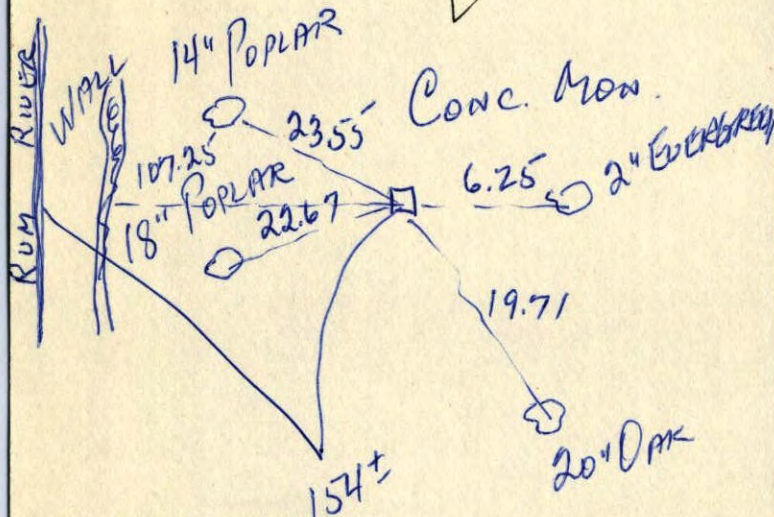
Conc. Mon.



9/28/59
N.C. Hoium

M.C. ON N. LINE
SEC. 6-31-24

24B

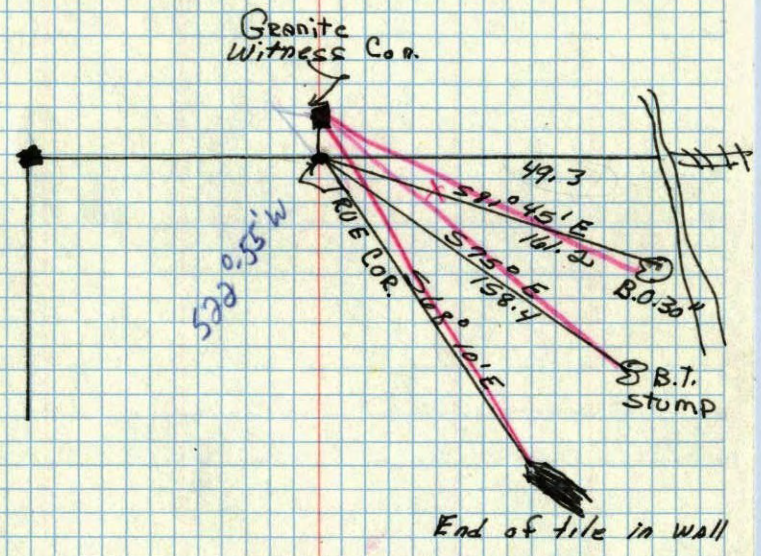


N. C. HOIUM
AND ASSOCIATES, INC.
LAND SURVEYORS
SHOPPING CENTER - WEST MAIN ST EET
ANOKA, MINNESOTA
HArrison 1-6340

NW CORNER OF Sec. 6 T.31 R24

Granite lying on side in river bed for
Witness Monument.

Redone



Nov. 7, 1945
CARTWRIGHT