

# CERTIFICATE OF LOCATION OF GOVERNMENT CORNER

County of Anoka

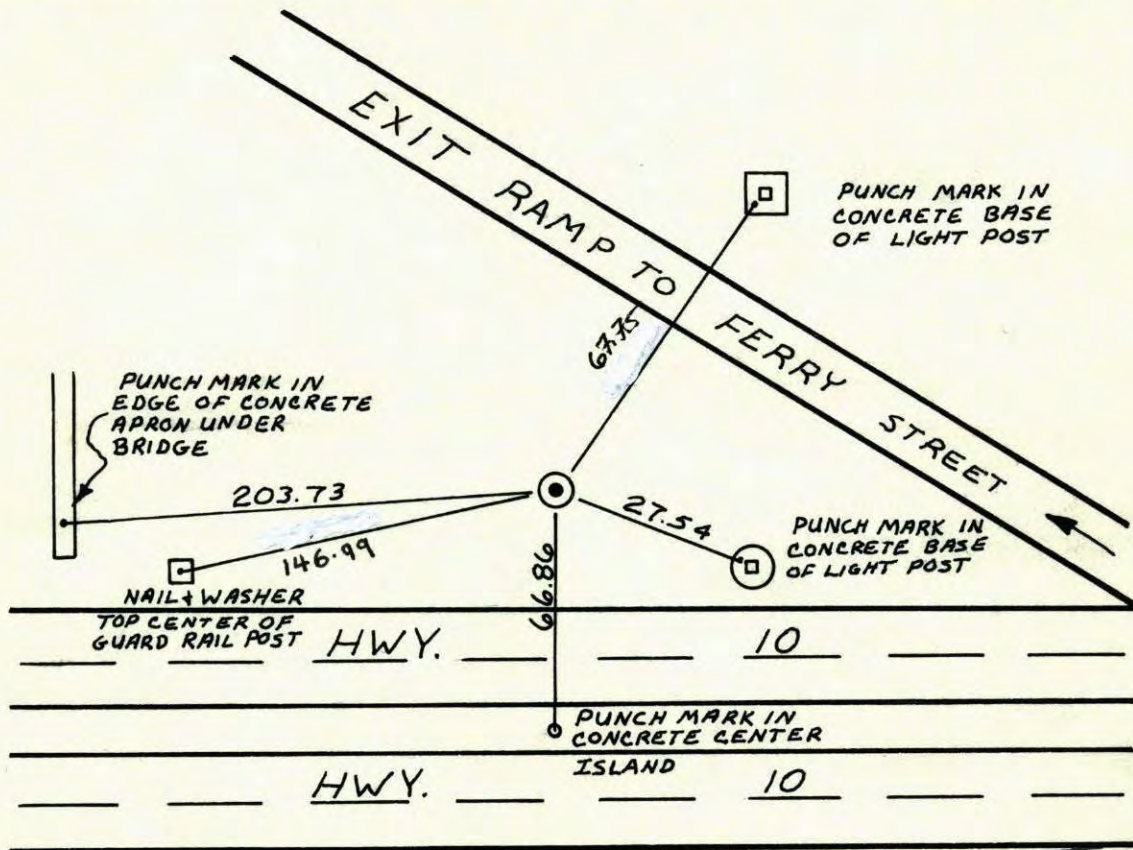
State of Minnesota

WEST ONE QUARTER Corner of Sec. 6 Township 31 Range 24

I hereby certify that on the 19 day of July, 1979, I found the described corner which was evidenced by AREA RESURVEY

and I further certify that to perpetuate the location of said corner, I did, at the exact location thereof, place a permanent marker consisting of CAST IRON MONUMENT

which reference or witness monuments are located in the manner following:



N.A.D. 1983 Co-ordinates  
 County Project Co-ordinates  
 Northing 161973.3851  
 468523.1177

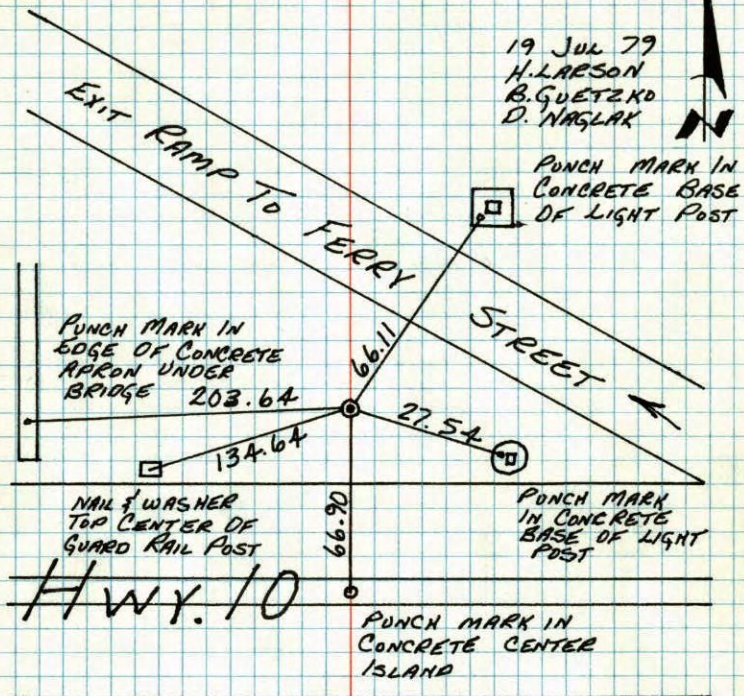
Revised date	By
REDRAWN 11-9-83	KREUSER
6-23-86	D. ROSS
5-30-91	H. LARSON

Minnesota State Plane Coordinates  
 South Zone  
 Y \_\_\_\_\_ X \_\_\_\_\_  
 \_\_\_\_\_  
 County Surveyor \_\_\_\_\_ Date \_\_\_\_\_  
 Registered Land Surveyor No. \_\_\_\_\_



W<sup>1</sup>/<sub>4</sub> CORNER SECTION 6-T31-R24

SET CAST IRON MONUMENT FROM RESURVEY TO EAST AND WEST WITH HIGHWAY DEPARTMENT AND N.C. HOIUM DISTANCES. CAST IRON FLUSH.



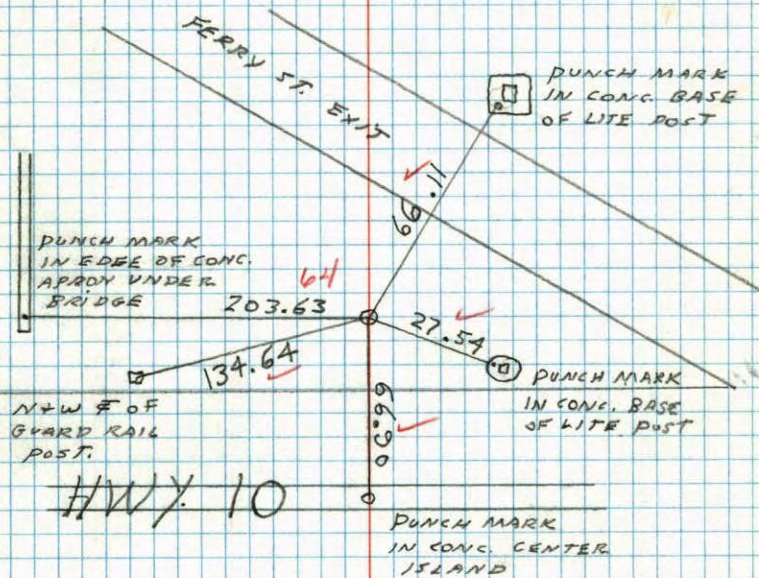
TIE CHECK  
7-10-80  
B. STEPHENS  
P. ROSS  
P. HORNBY

TEMPERATURE CORRECTED  
AND HORIZONTALLY  
TAPED MEASUREMENTS

ROLAND W. ANDERSON  
COUNTY SURVEYOR  
ANOKA COUNTY, MINNESOTA

W<sup>1</sup>/<sub>4</sub> COR. SECTION 6 T31 R24

SET CAST IRON MONUMENT FROM RESURVEY TO EAST AND WEST WITH HWY. DEPT. AND N.C. HOIUM DISTANCES. C.I. FLUSH



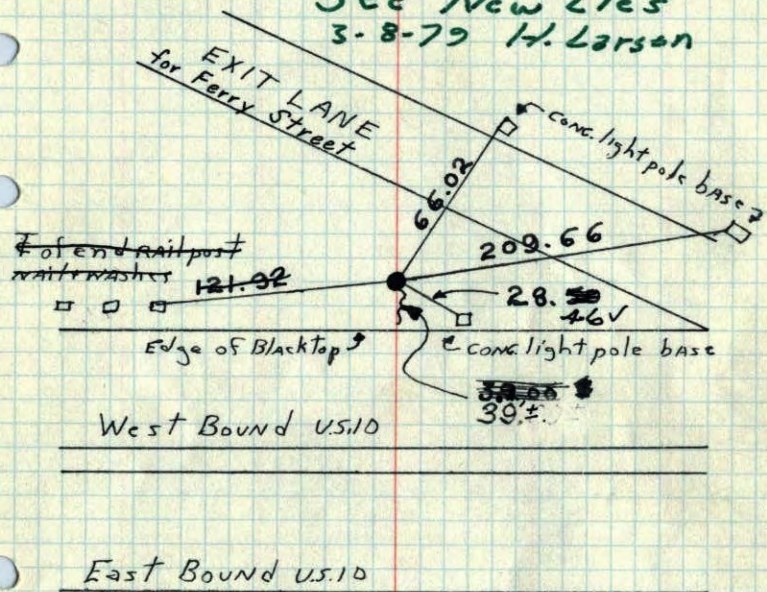
#1 - 75°  
7-19-79  
H. LARSON  
B. GUETZKO  
D. NAGLAK



W 1/4 Cor. Sec. 6, T31, R24

Set east iron monument from ties prior to construction of U.S. 10. Cast iron monument on slope and flush.

See New ties  
3-8-79 H. Larson



East Bound U.S. 10

Tie Check  
July 27, 1966  
H. Larson  
D. Potter  
G. Reimer  
August 6, 1970  
D. Powell  
R. Brien  
B. Olson

TIE CHECK  
JUNE 15, 1977  
R. SPANNERUD  
S. BRIEN  
J. STEPHENS

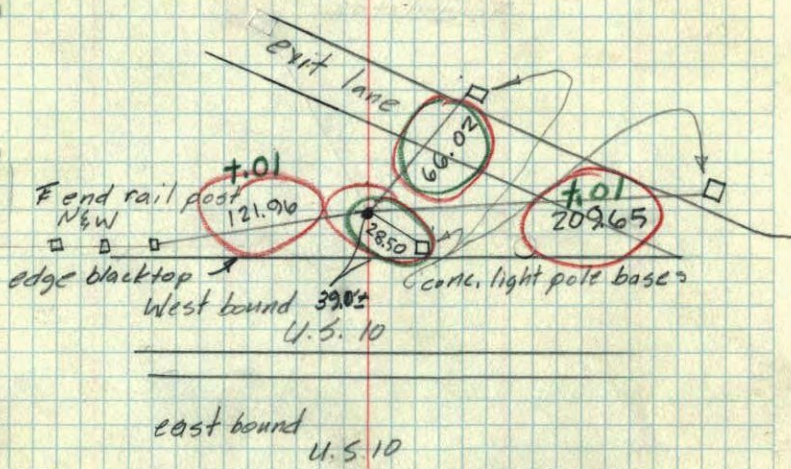
Sept. 1, 1965  
65° ± 5  
M.D. Anderson  
D. Brenna  
Tie Check  
7/2/74  
R. Farmer  
N. D.  
D. D.

TEMPERATURE CORRECTED  
AND HORIZONTALLY  
TAPED MEASUREMENTS

ROLAND W. ANDERSON  
COUNTY SURVEYOR  
ANOKA COUNTY, MINNESOTA

N 1/4 Cor. Sec. 25-T31-R24

Set Cast Iron Mon. from ties taken prior to Const. of U.S. 10  
C.I. Mon. on slope & flush



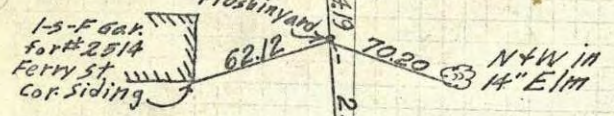
east bound  
U.S. 10

Sept. 1, 1965  
M.D. Anderson  
D. Brenna  
Temp 65°  
Tape 5



W 1/4 Cor. Sec. 6, T 31, R. 24.

Retied 3/4" I.P. because of freeway Const. N+W in 10" trunk of Multiple Boxelder



25 June 63  
J. Oliver  
M.D. Anderson  
R. Carlson

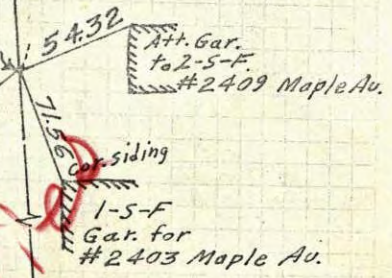
TEMPERATURE CORRECTED  
AND HORIZONTALLY  
TAPED MEASUREMENTS

ROLAND W. ANDERSON  
COUNTY SURVEYOR  
ANOKA COUNTY, MINNESOTA

3/4" I.P. 1/4 Cor.  
Set Cast Iron Monument  
with Steel Fence Post  
18 Nov. 64 Oliver-Anderson  
- Nordin

Set Cast Iron at 1/4 Cor. N+W in 18" Boxelder  
will tie later  
TIC new

Sight to W. Edge of pole supporting large bird house in back yard of #50 Maple Lane



W 1/4 Cor. Sec. 6, T 31, R. 24.

Retied 3/4" I.P. because of freeway Const. N+W in 10" trunk of Multiple Boxelder

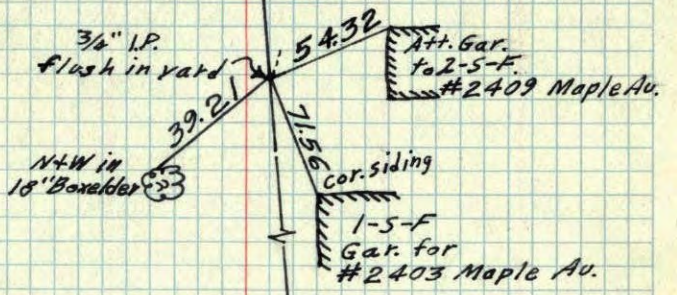


25 June 63  
J. Oliver  
M.D. Anderson  
R. Carlson

TEMPERATURE CORRECTED  
AND HORIZONTALLY  
TAPED MEASUREMENTS

ROLAND W. ANDERSON  
COUNTY SURVEYOR  
ANOKA COUNTY, MINNESOTA

Set Cast Iron Monument  
with Steel Fence Post  
18 Nov. 64 Oliver-Anderson  
- Nordin

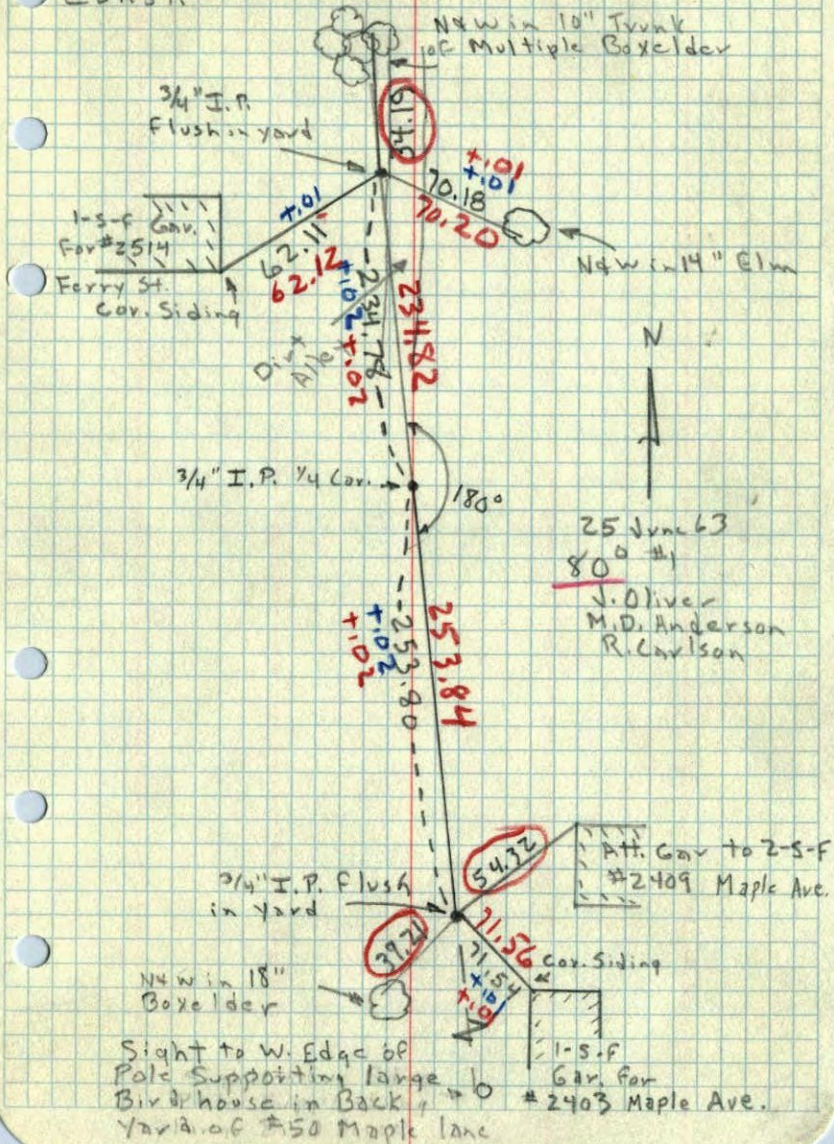


Sight to W. Edge of pole supporting large Bird house in back yard of #50 Maple Lane



W 1/4 Cor. Sec. 6, T 31, R 24

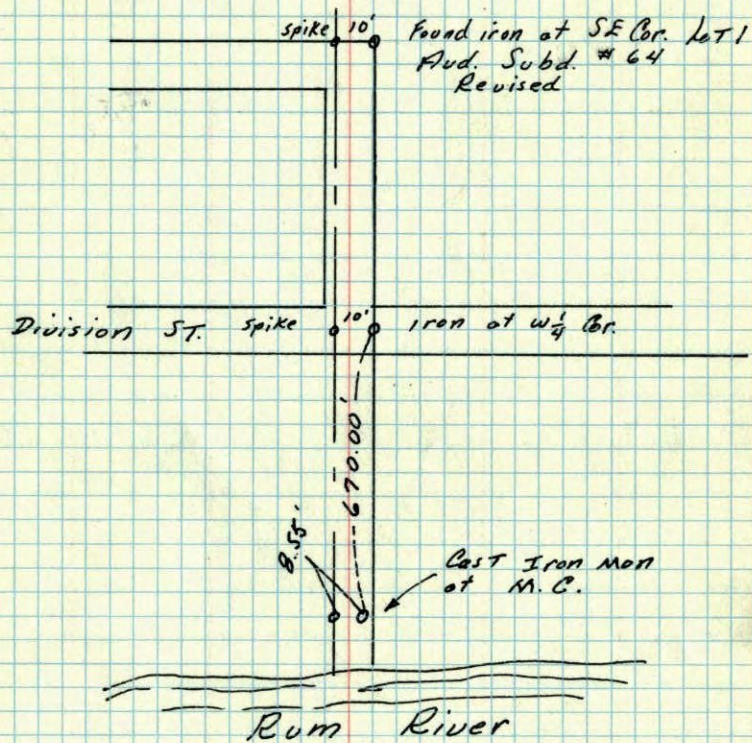
Retied 3/4" I.P. because of Freeway  
Const.



W 1/4 Cor. Sec. 6-31-24 Anoka Twn.

Found 1/2" iron in & Division ST.

5 Oct 1961  
R.O. Freeman  
M.D. Anderson

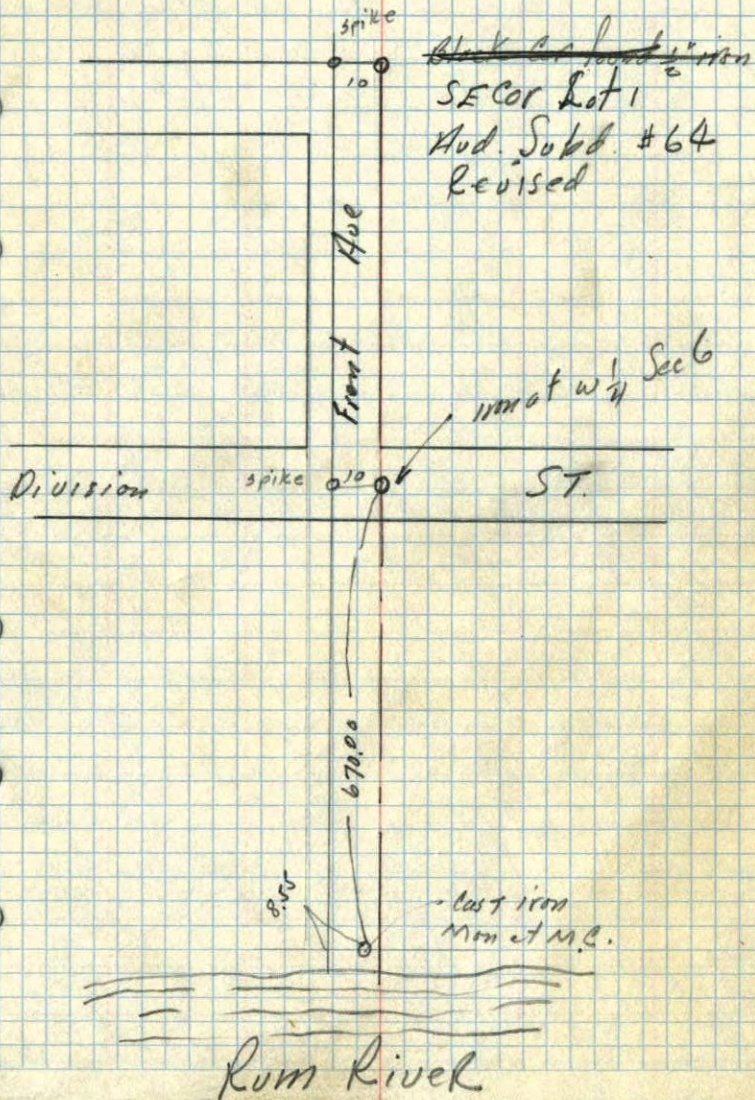


TEMPERATURE CORRECTED ROLAND W. ANDERSON  
AND HORIZONTALLY COUNTY SURVEYOR  
TAPED MEASUREMENTS ANOKA COUNTY, MINNESOTA

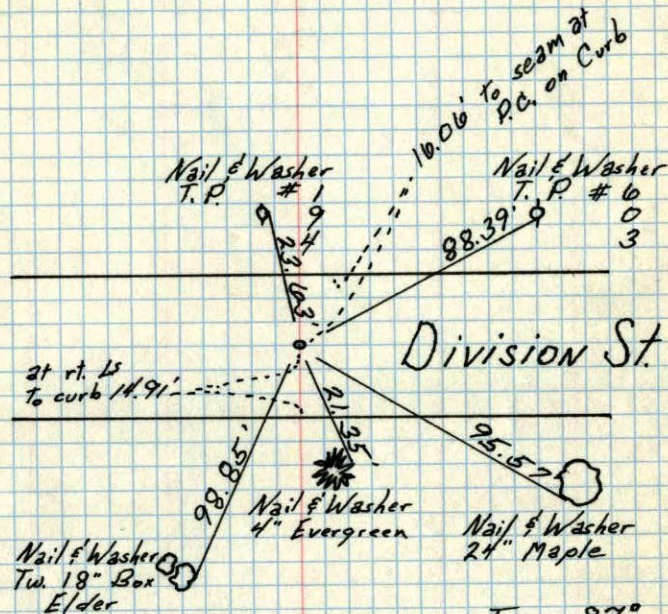


5 Oct 1961  
 Freeman Anderson  
 +78°

Ties To  $w\frac{1}{4}$  Cor Sec 6-31-24 Anoka  
 Found  $\frac{1}{2}$ " iron pipe  $\frac{1}{2}$  Division St.



$W\frac{1}{4}$  Cor. Sec 6 - T31 - R24  
 Iron Pipe



TEMPERATURE CORRECTED  
 AND HORIZONTALLY  
 TAPED MEASUREMENTS

Temp. 87°  
 8/11/60  
 Dennis Potter  
 Dick Giddings

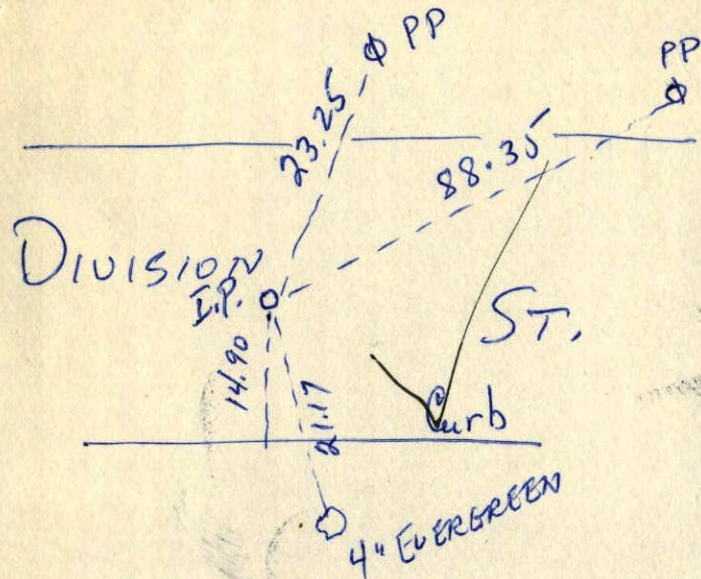
ROLAND W. ANDERSON  
 COUNTY SURVEYOR  
 ANOKA COUNTY, MINNESOTA







W 1/4 Sec 6 - 31-24



**N. C. HOIUM  
AND ASSOCIATES, INC.**  
LAND SURVEYORS  
SHOPPING CENTER - WEST 14<sup>TH</sup> ST EET  
ANOKA, MINNESOTA  
Harrison 1-6340