

CERTIFICATE OF LOCATION OF GOVERNMENT CORNER

County of Anoka

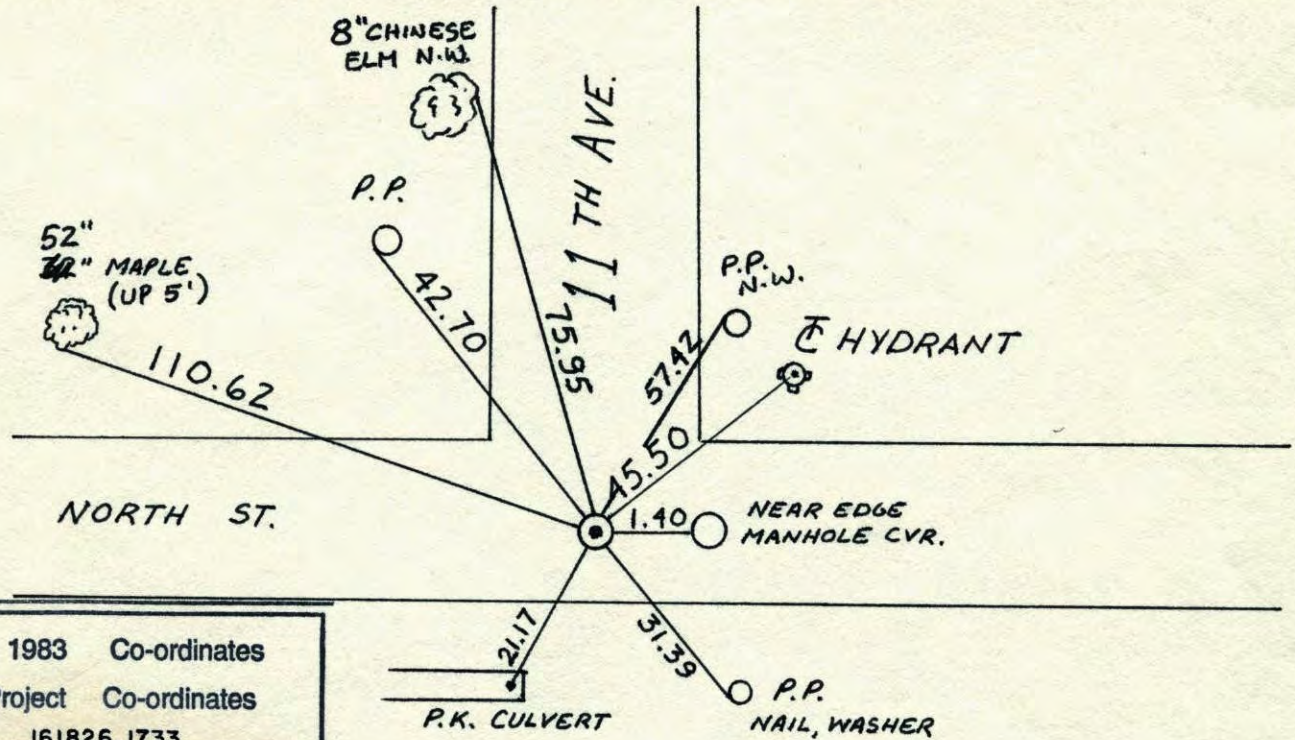
State of Minnesota

WEST QTR. Corner of Sec. 5 Township 31 Range 24

I hereby certify that on the 17 day of FEB., 1960, I found the described corner which was evidenced by CONCRETE MON.

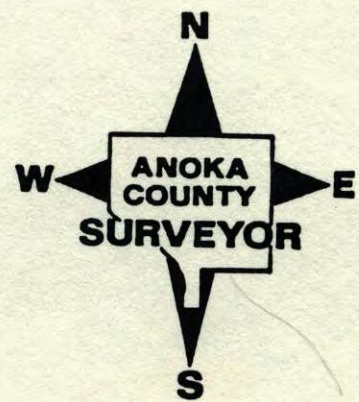
and I further certify that to perpetuate the location of said corner, I did, at the exact location thereof, place a permanent marker consisting of CAST IRON MON.

which reference or witness monuments are located in the manner following:



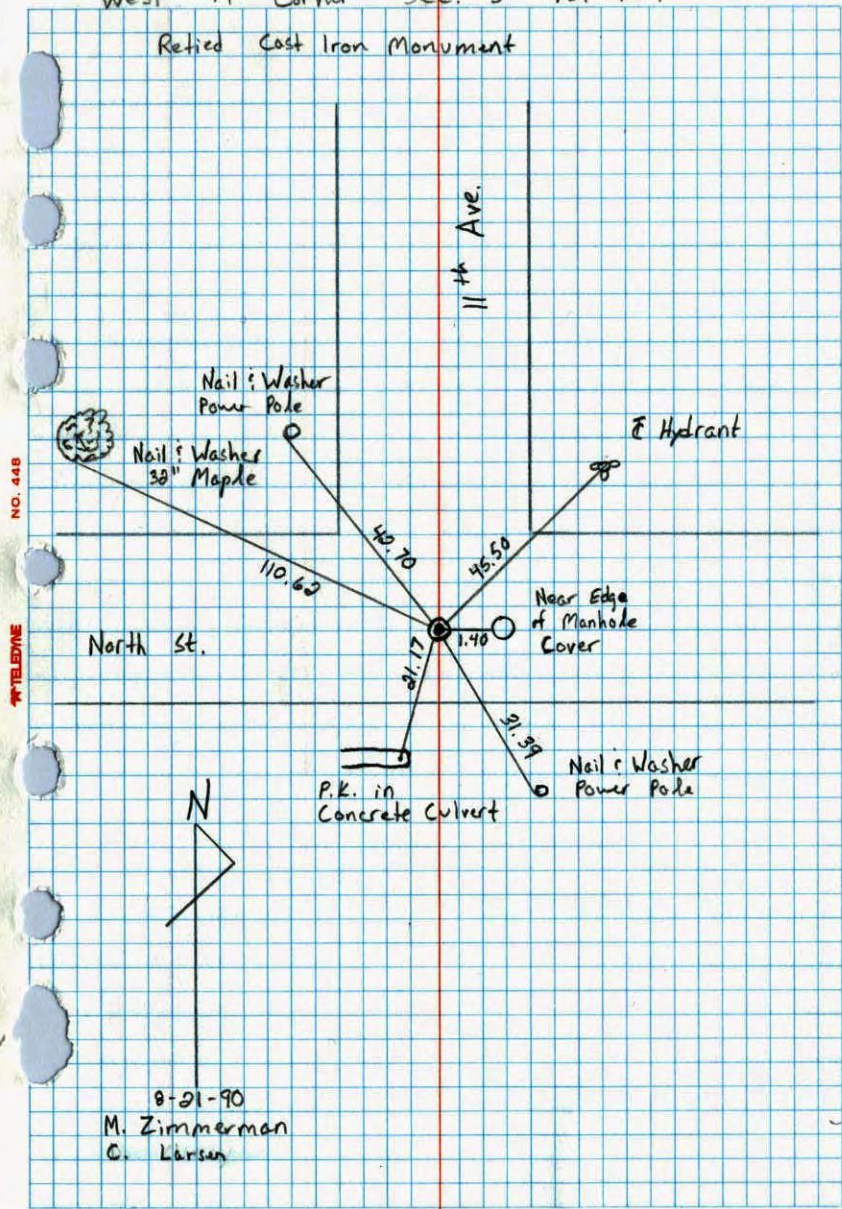
N.A.D.	1983	Co-ordinates
County	Project	Co-ordinates
Northing	<u>161826.1733</u>	
Easting	<u>473884.6198</u>	
State Plane Co-ordinates		
Y	_____	
X	_____	
Date	_____	

Revised date	Revised date	Revised date
<u>6-16-86</u>		
<u>8-21-90</u>		
<u>8-18-94</u>		
<u>8-7-01</u>		



West 1/4 Corner Sec. 5 T31 R24

Retied Cast Iron Monument



NO. 448

TELEPHONE

8-21-90
M. Zimmerman
C. Larsen

W 1/4 Cor. Sec. 5 T-31 R-24

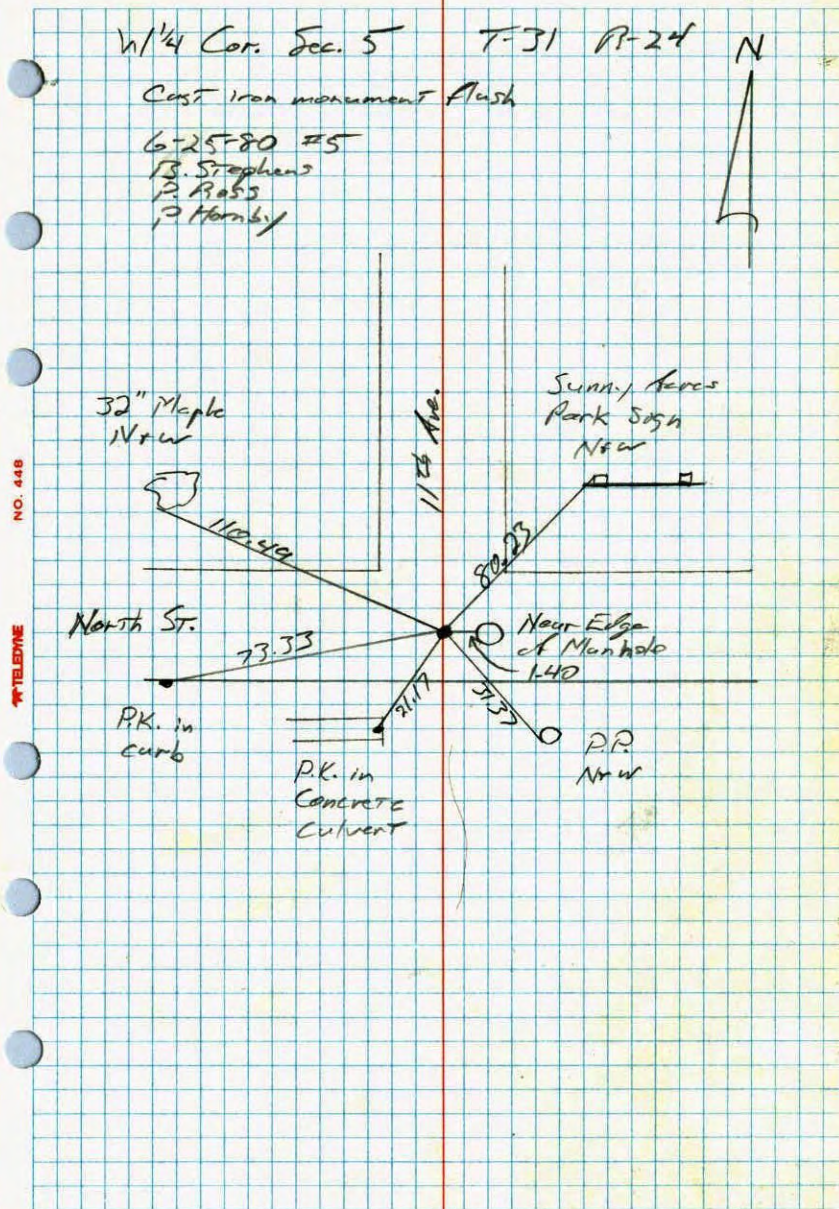
Cast iron monument flush

6-25-80 #5

B. Stephens

P. Ross

P. Hornby

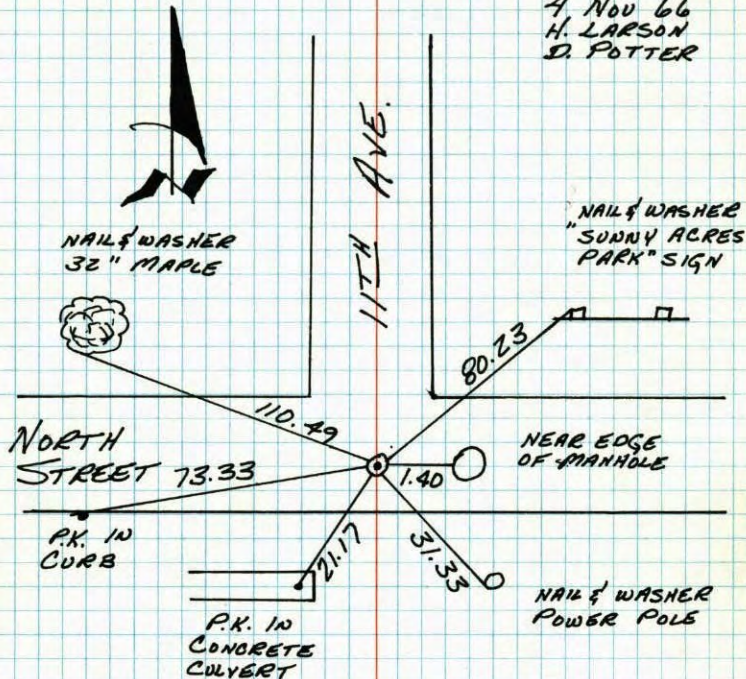


NO. 448

TELEPHONE

W 1/4 CORNER SECTION 5-T31-R24

SET CAST IRON MONUMENT FLUSH AFTER CONSTRUCTION
4 1/2' SOUTH OF CENTERLINE. P.K.'S 2.00' NORTH & EAST
4. NOV 66
H. LARSON
D. POTTER



TIE CHECK
25 JUN 80
B. STEPHENS
P. ROSS
P. HORNEY

TEMPERATURE CORRECTED
AND HORIZONTALLY
TAPED MEASUREMENTS

ROLAND W. ANDERSON
COUNTY SURVEYOR
ANOKA COUNTY, MINNESOTA

NO. 448
TELEPHONE

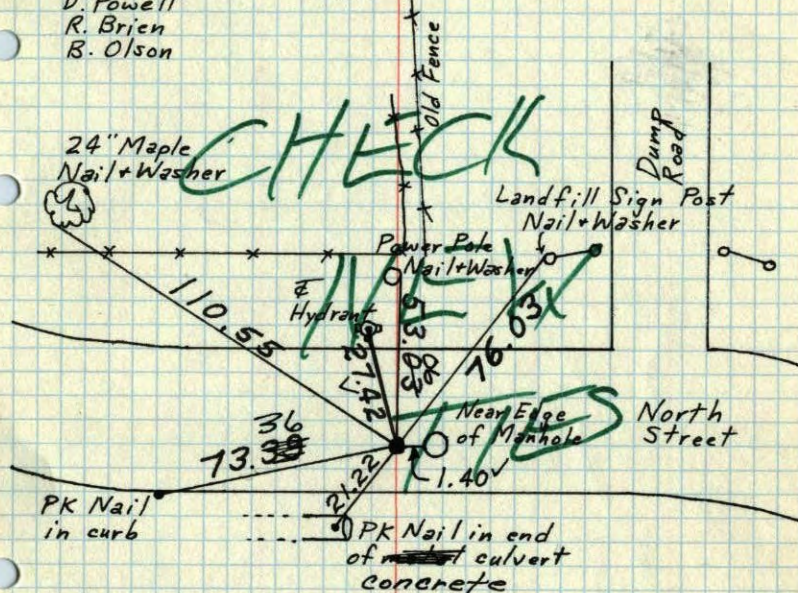
W 1/4 Cor. Sec. 5-T31-R24

Set Cast Iron Monument flush after construction.

4 1/2' South of E.

Nov. 4, 1966
H. Larson
D. Potter

Tie Check P.K.'S 2' N & W
July 23, 1970 7/2/74
D. Powell
R. Brien
B. Olson



Tie Check
7/2/74
R. Farmer
N. D.
D. D.

TIE CHECK
JUNE 15, 1977
R. SANNEBUD
S. BRIEN
J. SJEDNENS

TEMPERATURE CORRECTED
AND HORIZONTALLY
TAPED MEASUREMENTS

ROLAND W. ANDERSON
COUNTY SURVEYOR
ANOKA COUNTY, MINNESOTA

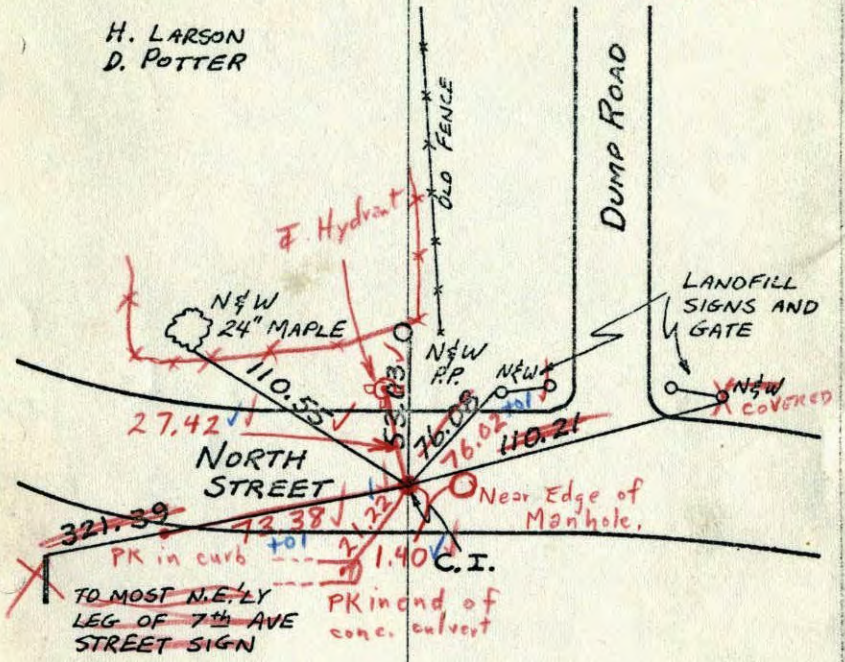
W 1/4 COR. SEC. 5, T 31, R 24
SET CAST IRON MONUMENT AFTER
CONSTRUCTION

C.I. FLUSH & SOUTH 4'± OF E

Nov. 4, 1966
36°

H. LARSON
D. POTTER

7/23/70
#10-740
D. Powell
R. Brien
B. Olson



TEMPERATURE CORRECTED
AND HORIZONTALLY
TAPED MEASUREMENTS

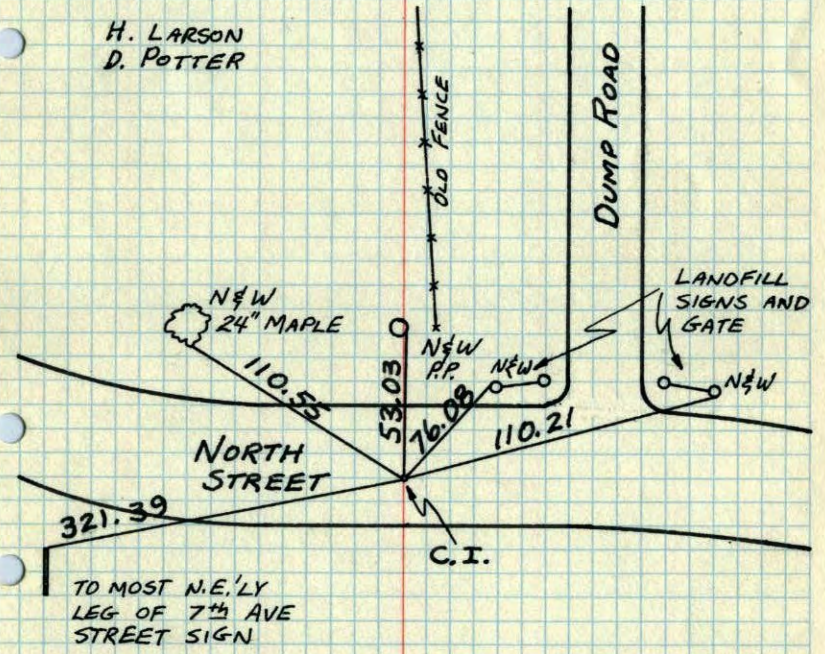
ROLAND W. ANDERSON
COUNTY SURVEYOR
ANOKA COUNTY, MINNESOTA

W 1/4 COR. SEC. 5, T 31, R 24
SET CAST IRON MONUMENT AFTER
CONSTRUCTION

C.I. FLUSH & SOUTH 4'± OF E

Nov. 4, 1966
36°

H. LARSON
D. POTTER

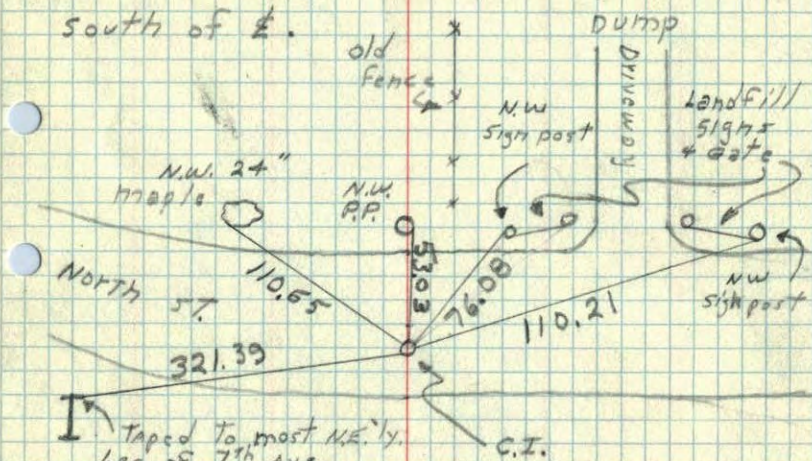


TEMPERATURE CORRECTED
AND HORIZONTALLY
TAPED MEASUREMENTS

ROLAND W. ANDERSON
COUNTY SURVEYOR
ANOKA COUNTY, MINNESOTA

W 1/4 Cor. Sec. 5 T31 R24

Set cast iron monument after construction. C.I. Flush and 4'± south of E.



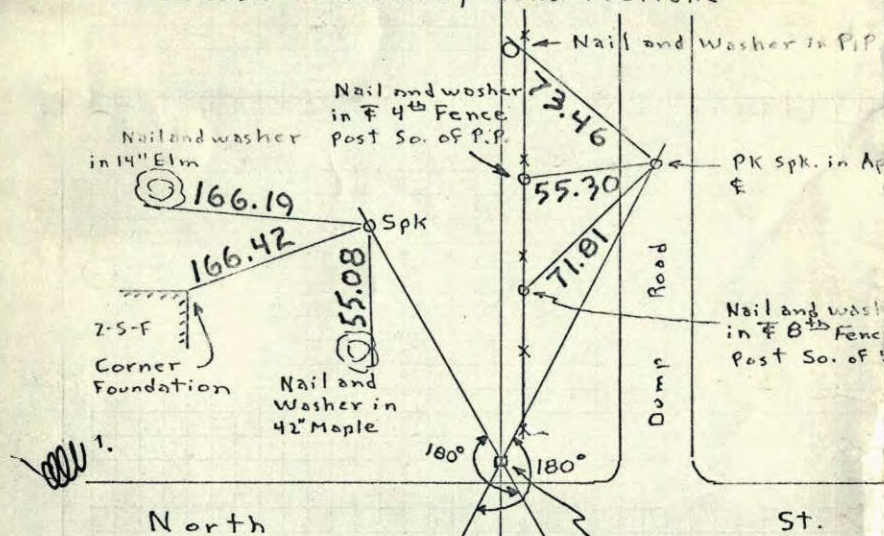
Taped to most NE'ly. Leg. of 7th Ave. street sign.

NOV. 4 1966
36°

H. Larson
D. Potter

W 1/4 Cor. Sec. 5, T31, R24

Took transit ties to Concrete monument because of freeway construction.



25 Mar. 64
J. Oliver
M.D. Anderson

**Set & Tied
C.I. mon.**

NOV. 4-66
H. Larson
D. Potter

Most E'ly Corner of Arched roof Concrete Bldg. Federal Cartridge Bldg.

Conc. Mon. 1/4 Cor. Set PK Spk with PK Spks 2.00' North and East - 18 Nov. Oliver-Anderson-Nav

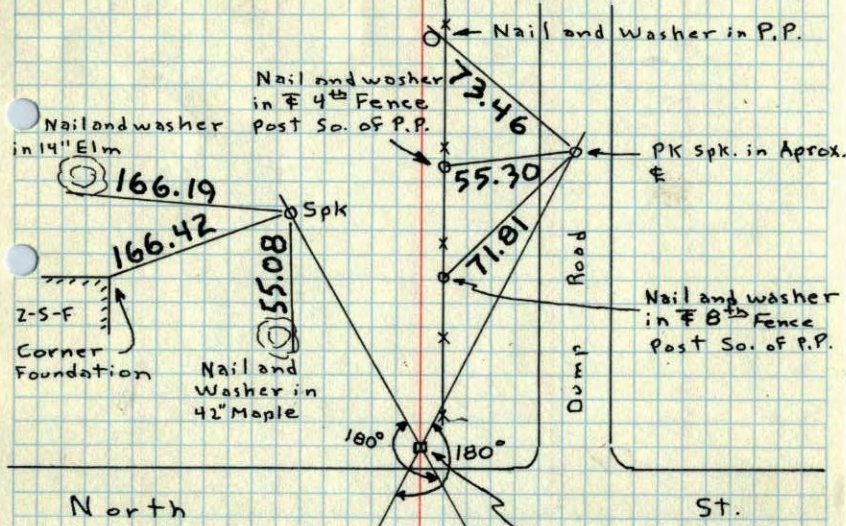
Aircraft warning light to of WCCO Radio tower

TEMPERATURE CORRECTED AND HORIZONTALLY TAPED MEASUREMENTS

ROLAND W. ANDERSON
COUNTY SURVEYOR
ANOKA COUNTY, MINNESOTA

W 1/4 Cor. Sec. 5, T31, R24

Took transit ties to Concrete monument because of freeway construction.



25 Mar. 64
J. Oliver
M.D. Anderson

Conc. Mon.
1/4 Cor.
Set PK Spk with
PK Spks 2.00' North
and East - 18 Nov. 64
Oliver-Anderson-Nardin

Most E'ly Corner
of Arched roof
Concrete Bldg.
Federal Cartridge
Bldg.

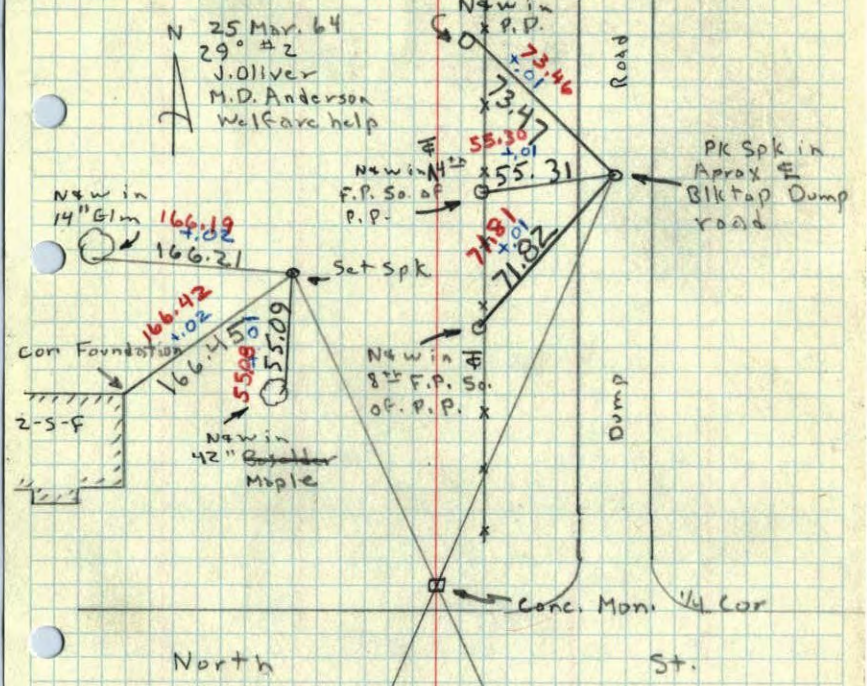
Aircraft
warning light on
top of WCCO
Radio tower

TEMPERATURE CORRECTED
AND HORIZONTALLY
TAPED MEASUREMENTS

ROLAND W. ANDERSON
COUNTY SURVEYOR
ANOKA COUNTY, MINNESOTA

W 1/4 Cor. Sec. 5, T31, R24

Took Transit ties to Conc. Mon. because of Freeway Const.



N 25 Mar. 64
29° #2
J. Oliver
M.D. Anderson
Welfare help

Conc. Mon. 1/4 Cor

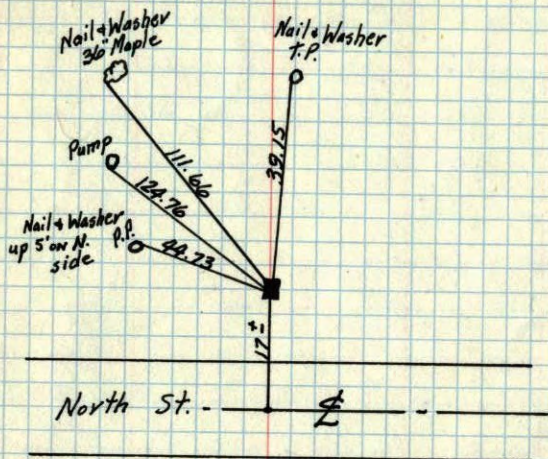
Most E'ly Cor.
Arched roof
Conc. Bldg.
Federal
Cartridge Bldg.

Aircraft
warning light
on top of
WCCO Tower

W/4 Corner Sec. 5 T31 R24

15

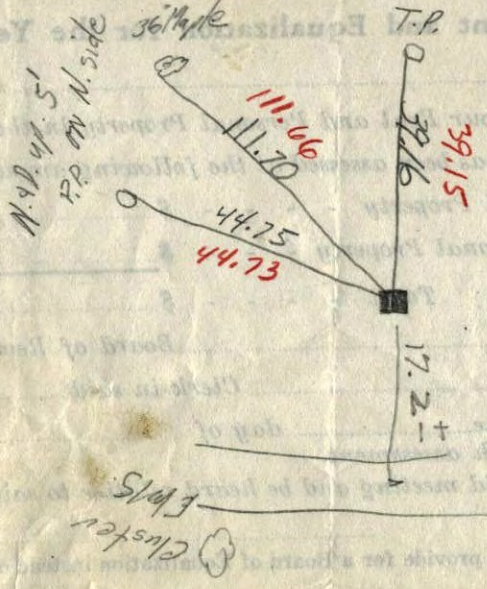
Con. Mon. Flush on slope of road



Feb. 17, 1960
Bill Rogers & Dennis Potter

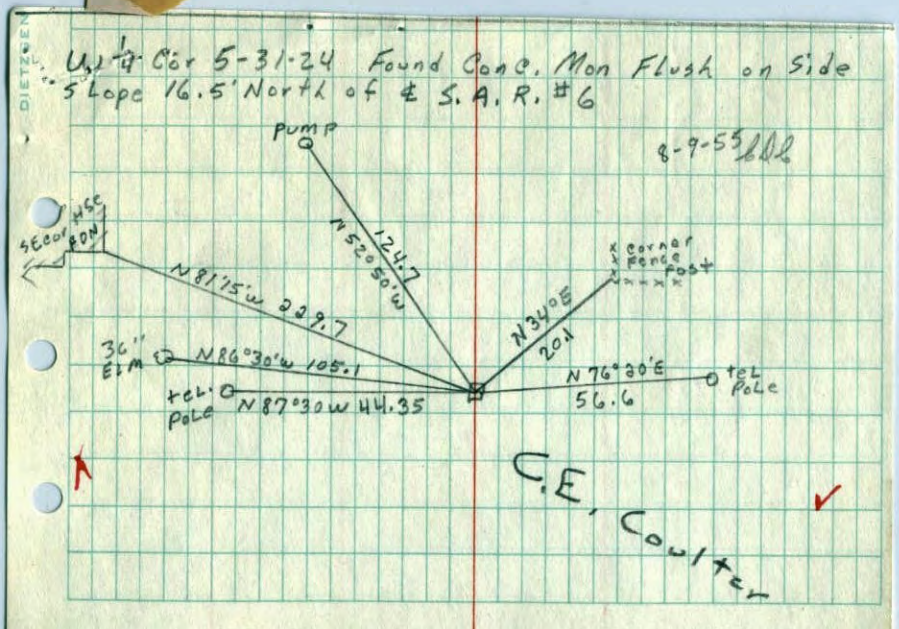
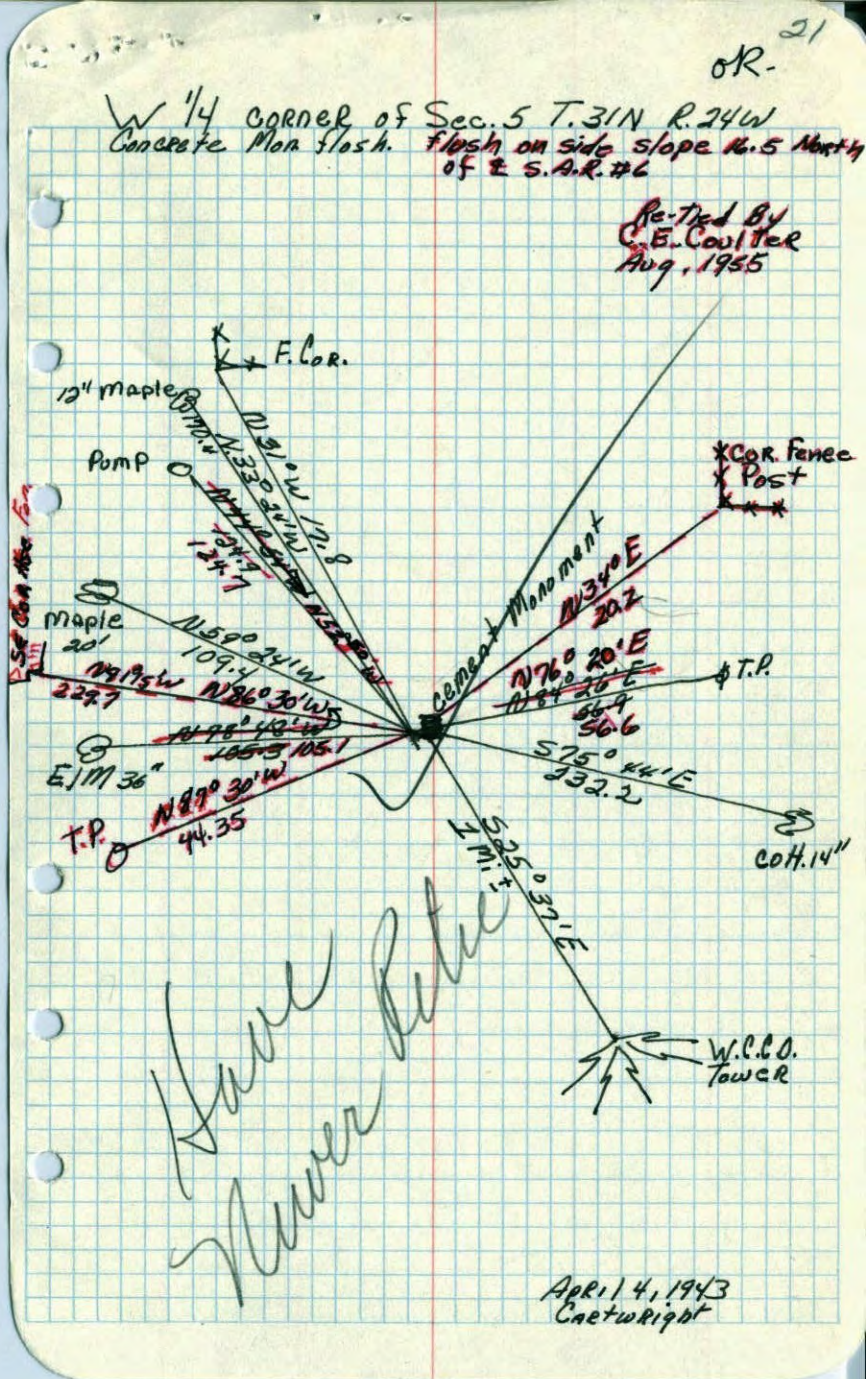
TEMPERATURE CORRECTED
AND HORIZONTALLY
TAPED MEASUREMENTS
ROLAND W. ANDERSON
COUNTY SURVEYOR
ANOKA COUNTY, MINNESOTA

N



W/4 Sec 5 T31 R24
Con. Mon.
Flush

Temp. 15°
2/17/60



Have
Placed

April 4, 1943
Carterwright