

CERTIFICATE OF LOCATION OF GOVERNMENT CORNER

County of Anoka

State of Minnesota

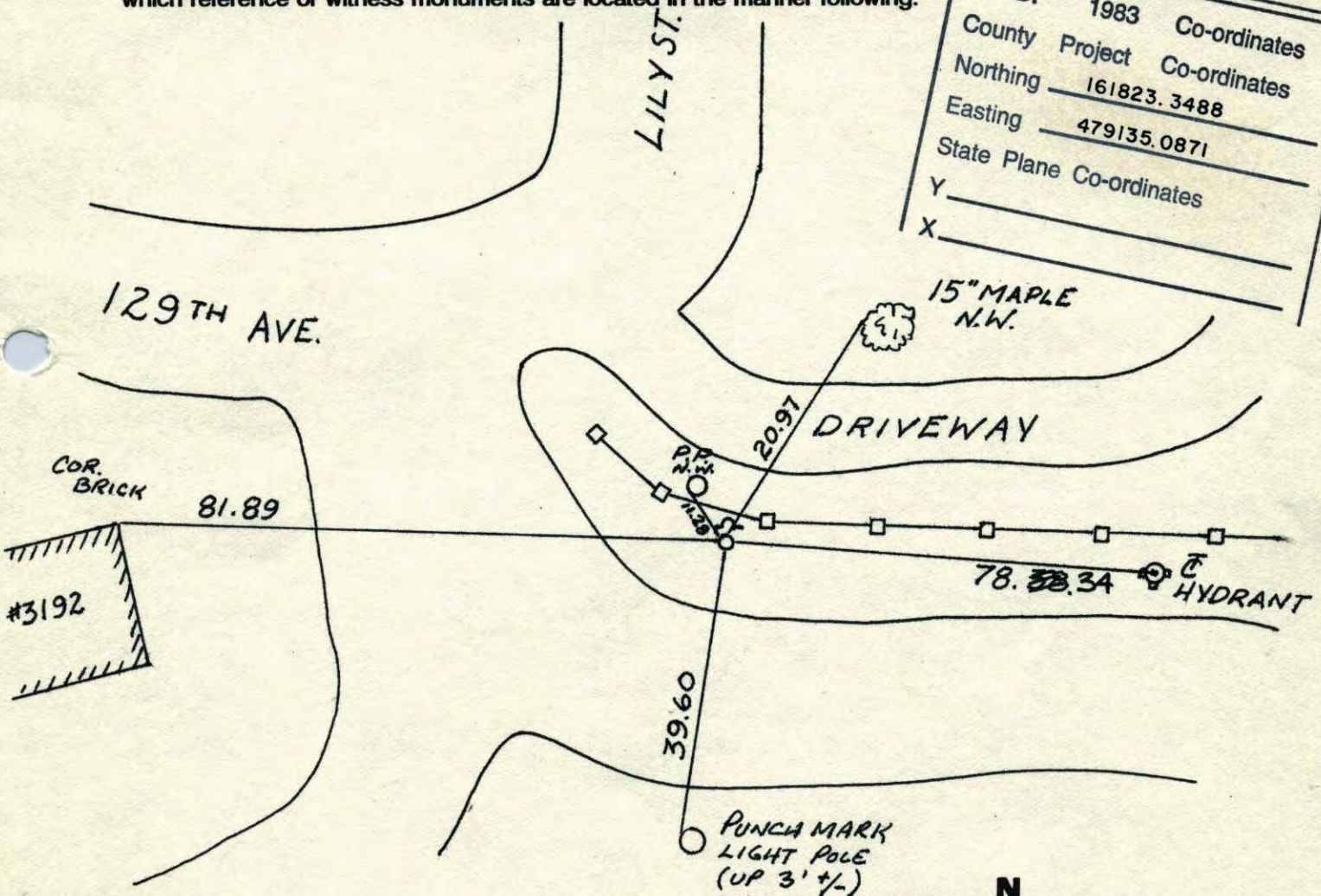
EAST QTR. Corner of Sec. 5 Township 31 Range 24

I hereby certify that on the 10 day of APRIL, 1943, I found the described corner which was evidenced by GRANITE MON.

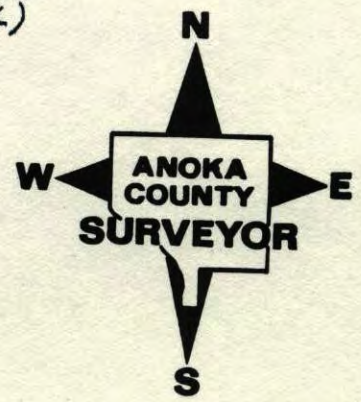
and I further certify that to perpetuate the location of said corner, I did, at the exact location thereof, place a permanent marker consisting of CAST IRON MON. SIGN AND POST ON NORTH SIDE

which reference or witness monuments are located in the manner following:

N.A.D.	1983	Co-ordinates
County	Project	Co-ordinates
Northing	161823.3488	
Easting	479135.0871	
State Plane Co-ordinates		
Y		
X		

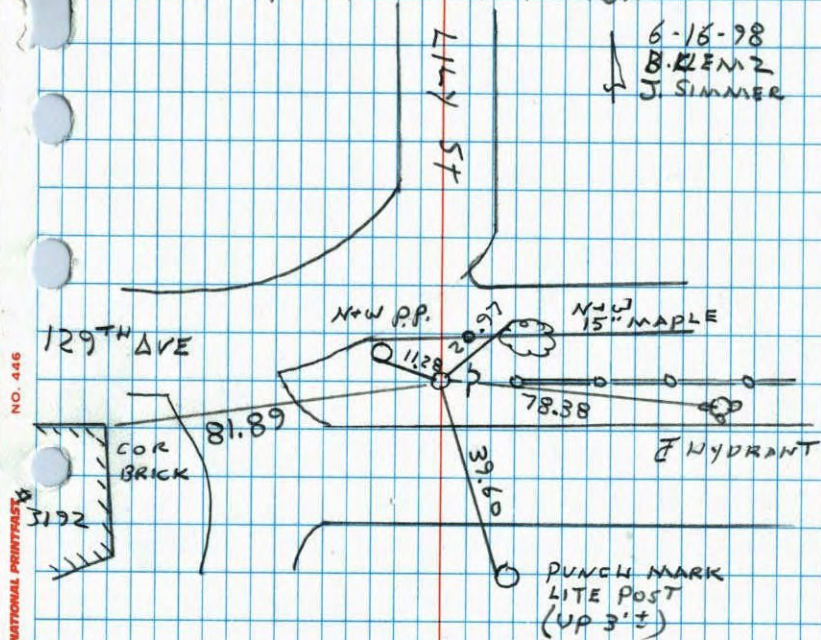


Revised date	Revised date	Revised date
8-4-94		
6-12-98		
8-7-01		



E 1/4 COR SECTION 5 T31 R24

RESET + RETIED AFTER CONSTRUCTION
SIGN + POST ON EAST SIDE.



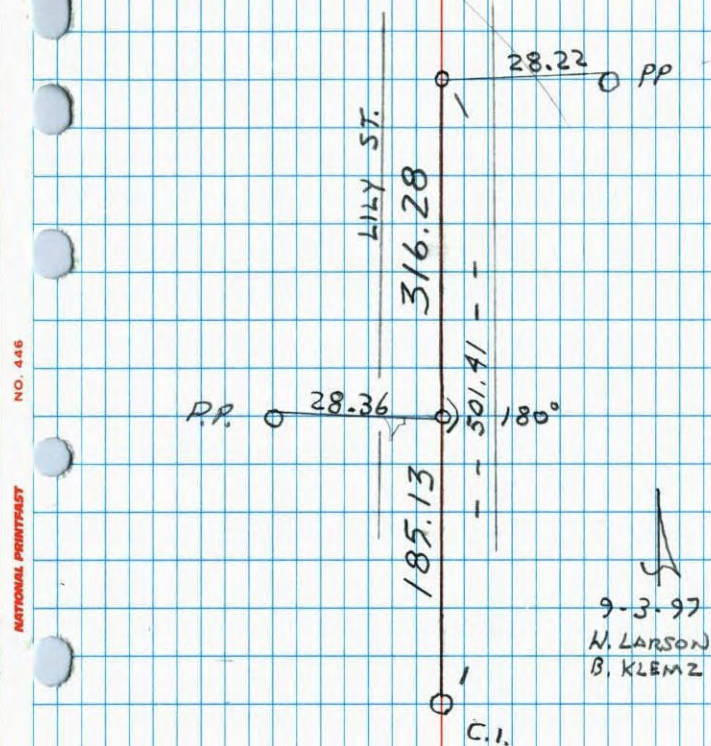
NO. 446

NATIONAL PRINTING

CONSTRUCTION TIE

E 1/4 COR. SECTION 5 T31 R24

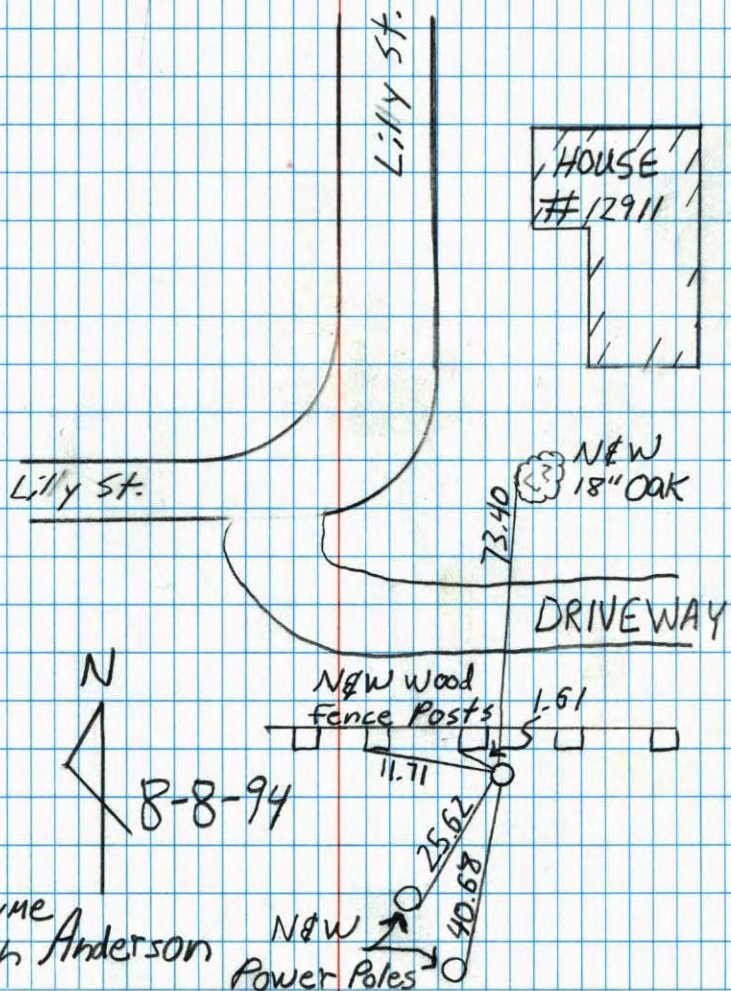
REMOVED FOR CONSTRUCTION
SET PKs ON LINE



NO. 446

NATIONAL PRINTING

E 1/4 Sec. 5 T. 31 R. 24
Retie Cast Iron Mon.

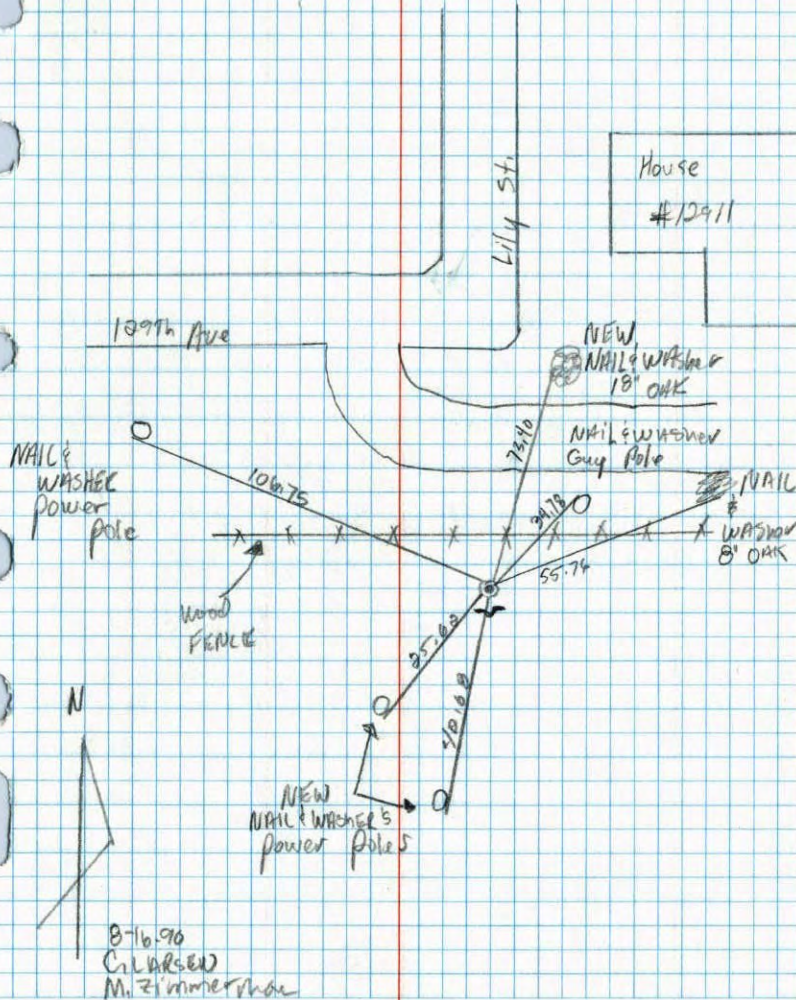


NO. 446

NATIONAL PRINTFAST

EAST 1/4 Sec. 5 T. 31 R. 24

RETIER CAST IRON MONUMENT
Sign & Post put in on south side



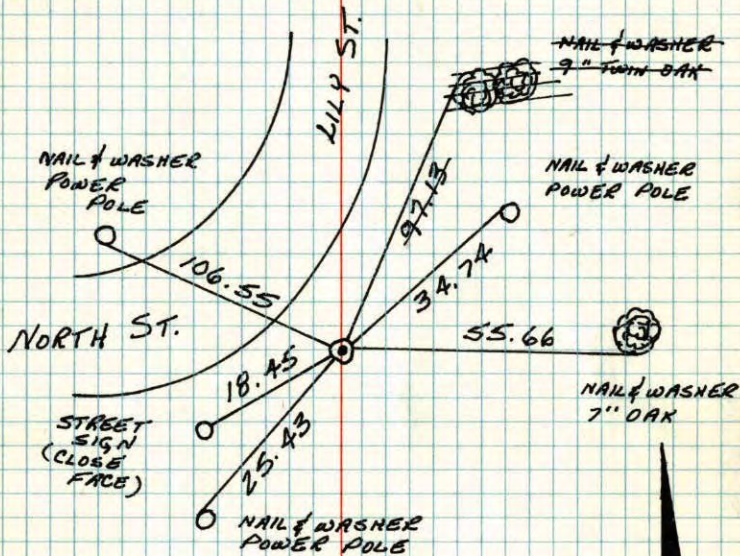
NO. 448

*TELEPHONE

8-16-96
C. Larsen
M. Zimmerman

E 1/4 CORNER SECTION 5-T31-R24

SET BROKEN OFF CAST IRON MONUMENT FLUSH ON TOP OF FIELD STONE FOUND AT LOCATION GRANITE MONUMENT WAS SAID TO BE. MONUMENT IS 4'± NORTH AND 8'± WEST OF EXTENDED CENTER-LINES.
24 FEB 60



TIE CHECK

JUNE 16, 1977
R. SANNEERUD
S. BRIEN
J. STEPHENS

TIE CHECK
6-20-80
B. STEPHENS
P. ROSS
P. HORNBY

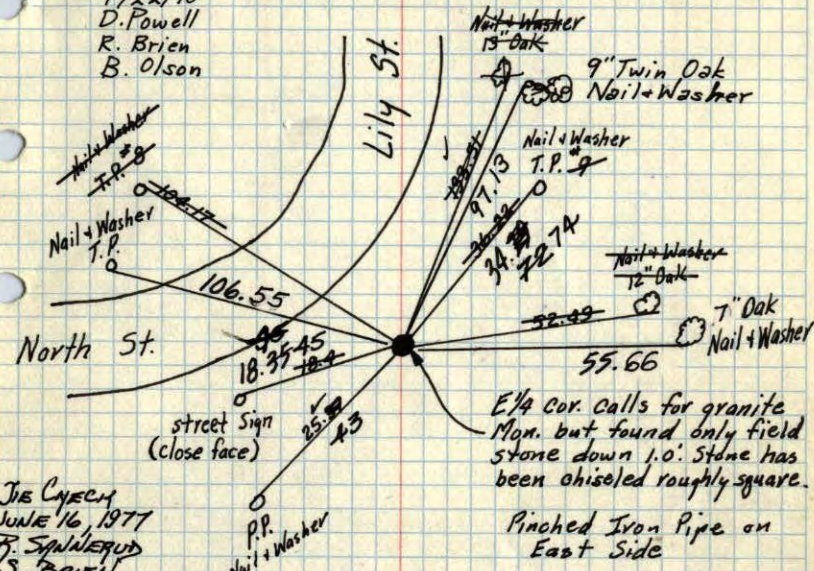
TEMPERATURE CORRECTED
AND HORIZONTALLY
TAPED MEASUREMENTS

ROLAND W. ANDERSON
COUNTY SURVEYOR
'ANOKA COUNTY, MINNESOTA'



E 1/4 Cor. Sec. 5 T31 R 24

Set broken off Cast Iron Monument flush on top of stone. 4'± North and 8'± West of E's.
7/22/70
D. Powell
R. Brien
B. Olson



TIE CHECK
JUNE 16, 1977
R. SANNEERUD
S. BRIEN
J. STEPHENS

Mon. in place
and all ties OK
Dec. 2, 1965
Oliver-Anderson-Larson

TEMPERATURE CORRECTED
AND HORIZONTALLY
TAPED MEASUREMENTS

Tie Check
July 14, 1966
H. Larson
D. Potter
G. Reimer

REDRAWN
18 JAN 79
RMG

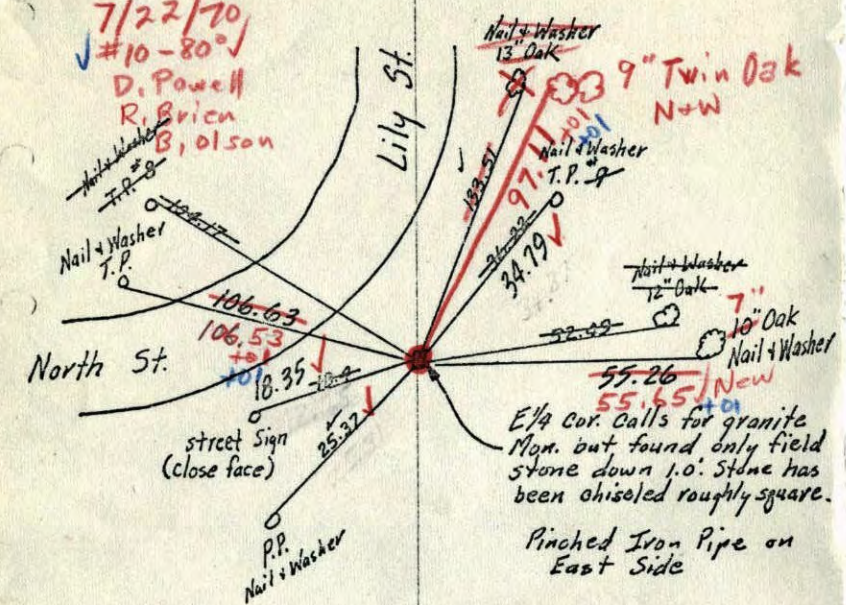
Feb. 24, 1960

SEE NEW
TIE BOOK

ROLAND W. ANDERSON
COUNTY SURVEYOR
'ANOKA COUNTY, MINNESOTA'

Tie Check
7/2/74
R. Farmer
M. D. Anderson
R. Carlson

X
 E 1/4 Cor. Sec. 5 T31 R24
 Set Broken C.I. Mon. flush on top of stone,
 4'± North of E. 8'± West of E. 17



Mon. in place
 and all ties OK
 Dec. 2, 1965
 Oliver-Anderson-Barson

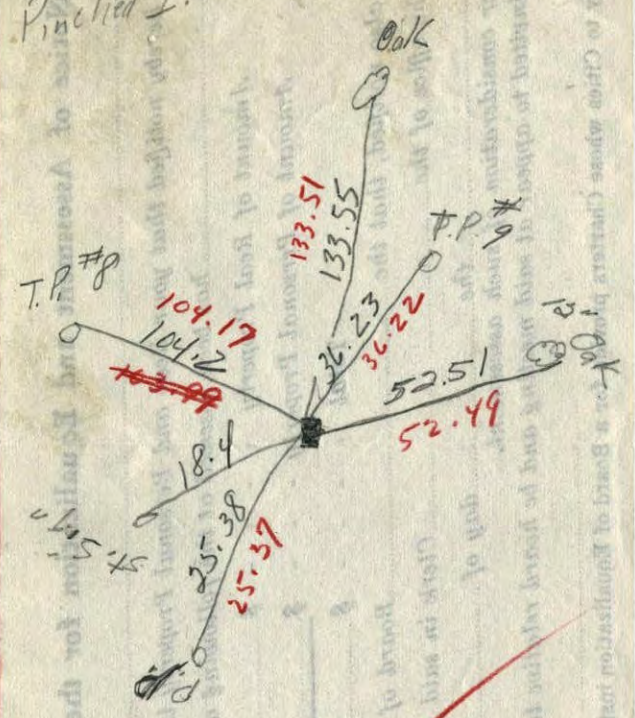
TEMPERATURE CORRECTED
 AND HORIZONTALLY
 TAPED MEASUREMENTS

Tie Check
 July 14, 1966.
 H. Larson
 D. Potter
 G. Reimer

Feb. 24, 1960

ROLAND W. ANDERSON
 COUNTY SURVEYOR
 ANOKA COUNTY, MINNESOTA
 Retie 6/8/64
 M.D. Anderson
 R. Carlson

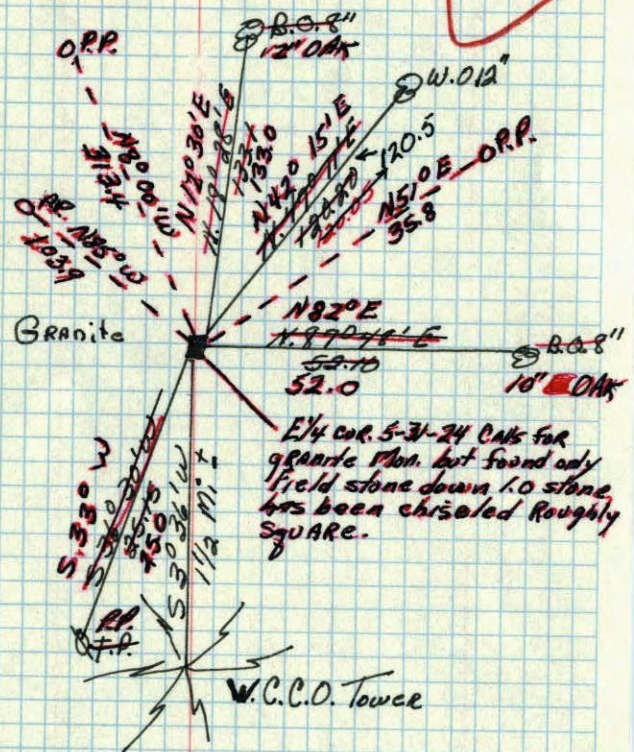
E 1/4 Cor. 5 T31 R24
 Stone down P.P.
 Pinched I.P. on E. side



temp. 22
 2/17/60

d.k. 16

E 1/4 CORNER of Sec. 5 Twp 31 Rgc. 24
Granite 6" x 6" down 8" Retied By
C.E. Coulter
Aug. 9. 1955



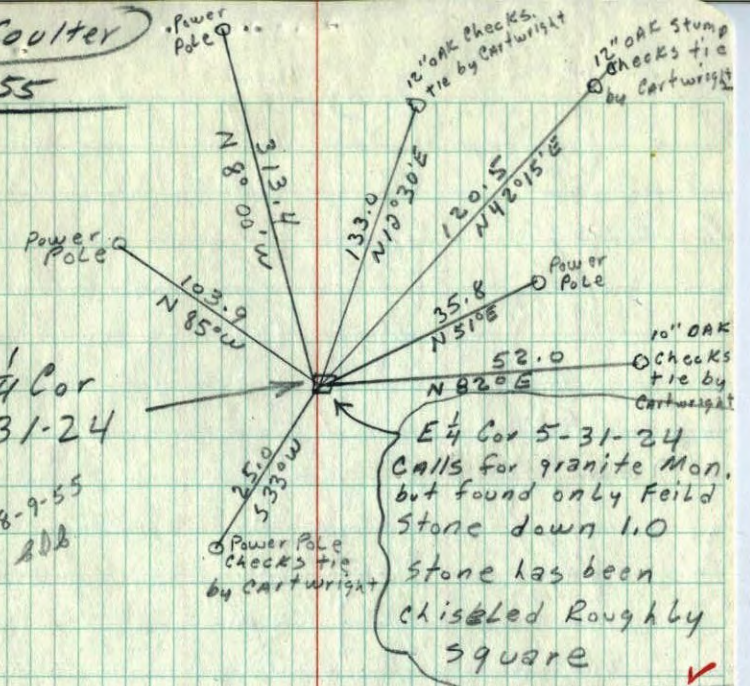
E 1/4 cor. 5-31-24 calls for granite Mon. but found only field stone down 1.0 stone has been chiseled roughly square.

W.C.C.O. Towce

April 10, 1943
Coetwright

C.E. Coulter
8-9-55

E 1/4 Cor
5-31-24
8-9-55
208



E 1/4 Cor 5-31-24
Calls for granite Mon. but found only field stone down 1.0 stone has been chiseled roughly square