

# CERTIFICATE OF LOCATION OF GOVERNMENT CORNER

County of Anoka

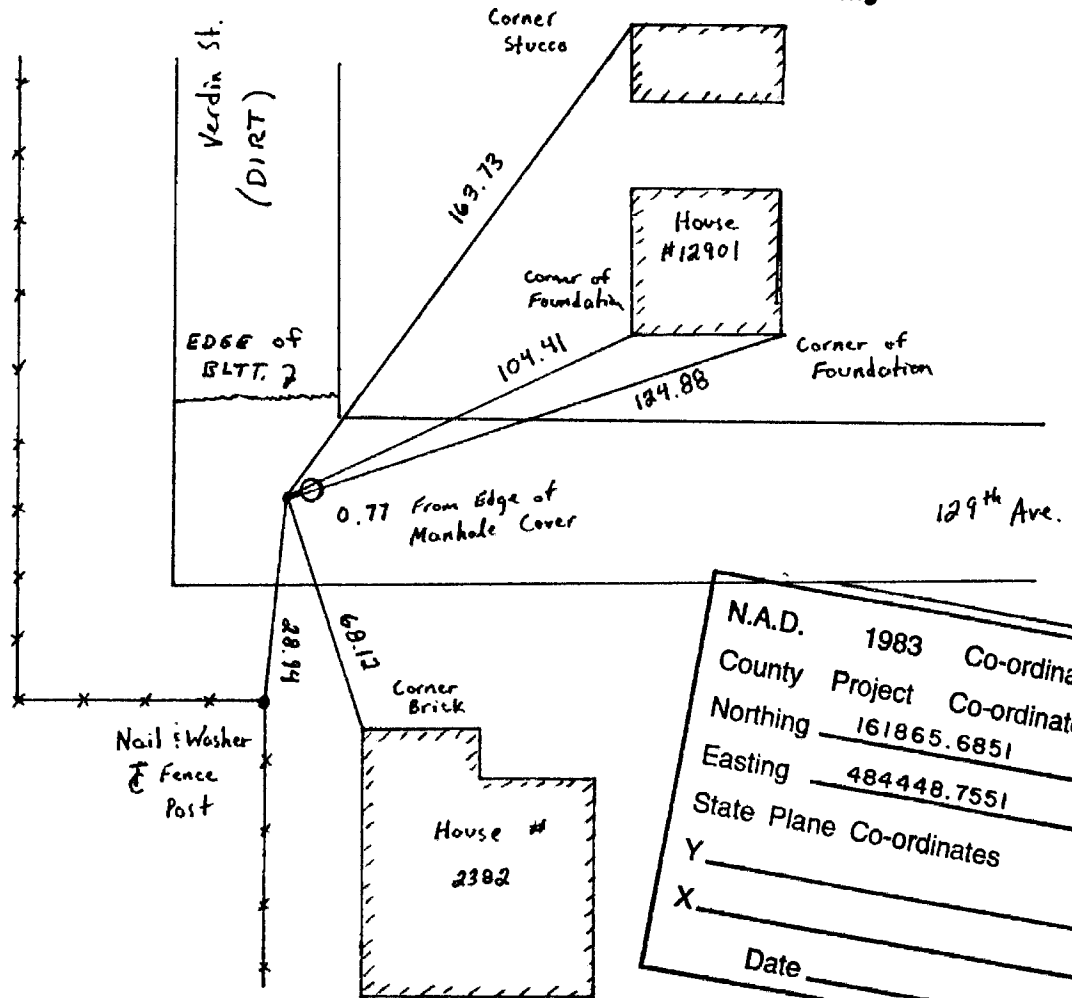
State of Minnesota

East  $\frac{1}{4}$  Corner of Sec. 4 Township 31 Range 24

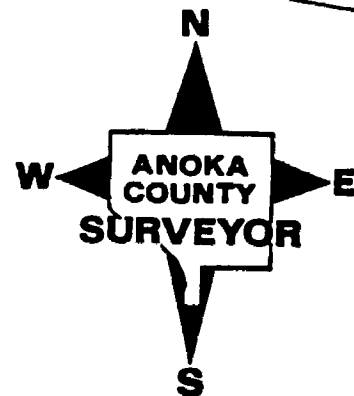
I hereby certify that on the 2 day of August, 1960, I found the described corner which was evidenced by Concrete Monument

and I further certify that to perpetuate the location of said corner, I did, at the exact location thereof, place a permanent marker consisting of  $\frac{1}{2}$ " Iron Pipe

which reference or witness monuments are located in the manner following:



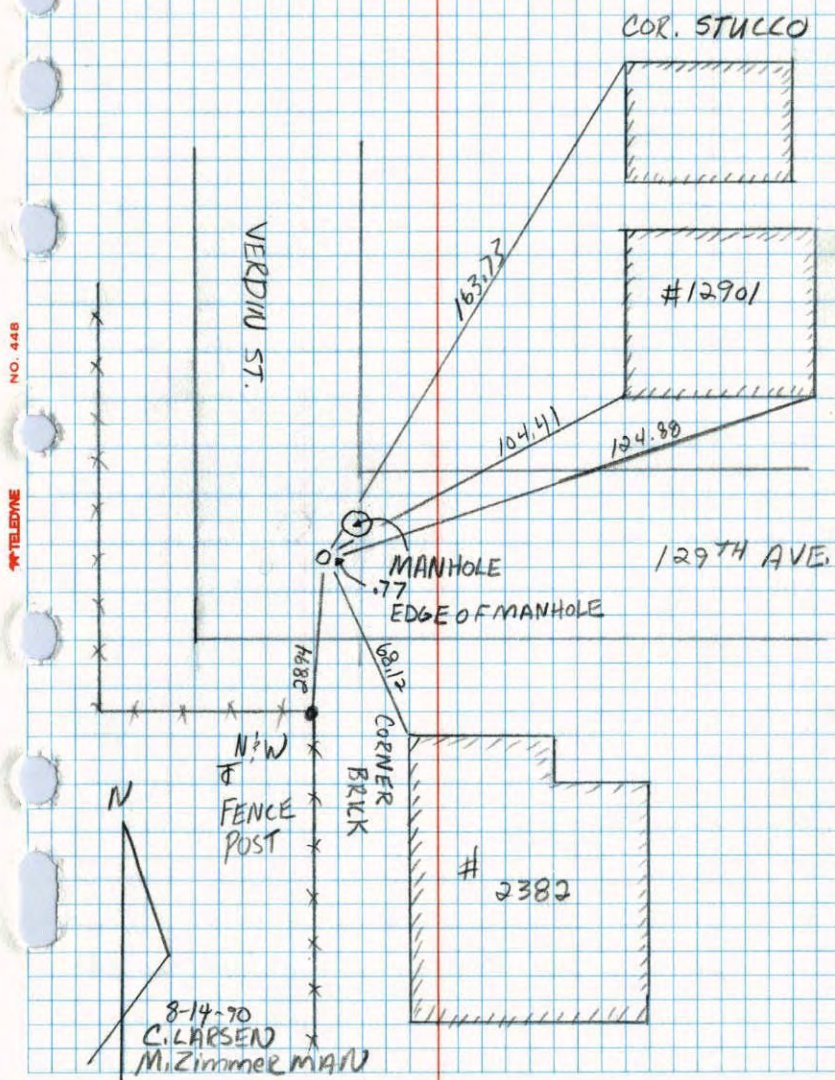
N.A.D.	1983	Co-ordinates
County	Project	Co-ordinates
Northing		<u>161865.6851</u>
Easting		<u>484448.7551</u>
State Plane Co-ordinates		
Y		_____
X		_____
Date _____		



Revised date	Revised date	Revised date
10-9-86		
8-14-90		
8-17-94		
2-23-95 <small>uu</small>		

EAST 1/4 Sec. 4 T31 R24

RETIED 1/2 INCH IRON PIPE

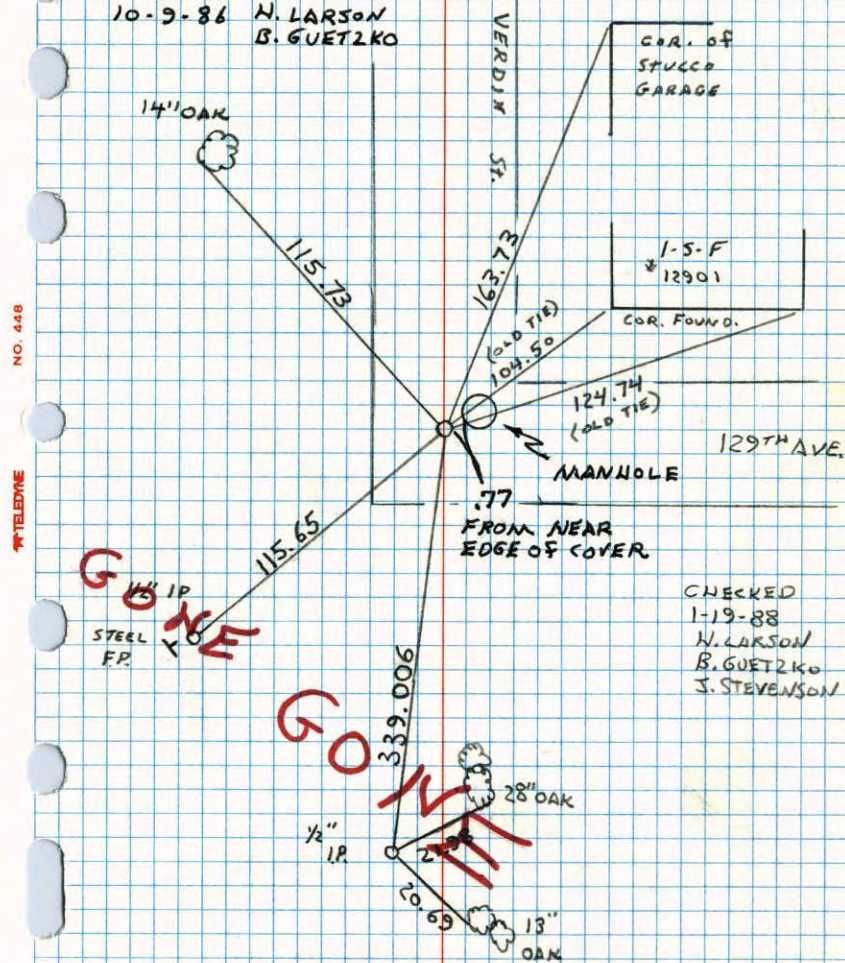


CONSTRUCTION TIE SET. 1/2" I.P.

E 1/4 CORNER SECTION 4 T31 R24

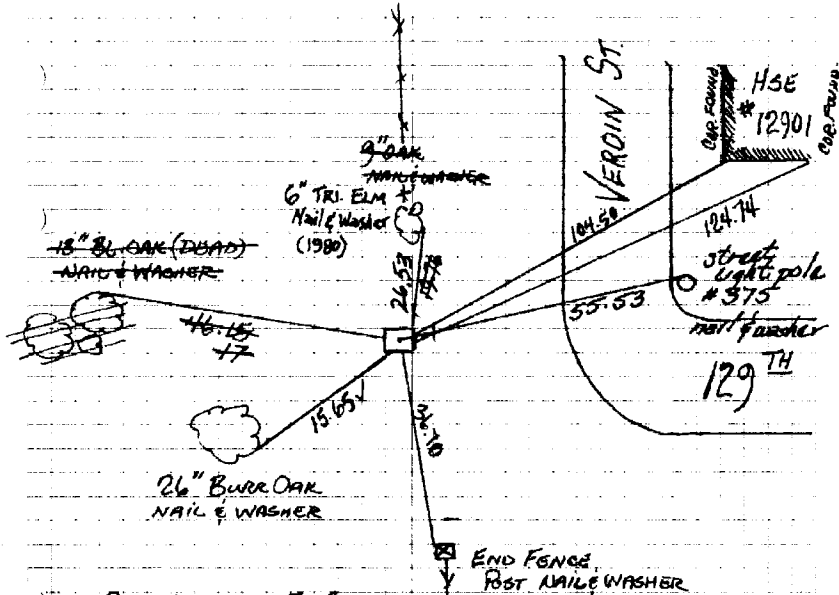
RETIED FOR CONSTRUCTION REMOVED AND PLACED 1/2" IP IN PLACE

SET 1/2" IRON PIPE 10-9-86 N. LARSON B. GUETZKO



E. 1/4 COR. SEC. 4 T31 R. 24<sup>17</sup>

SET CAST IRON MON. IN  
PLACE OF CONCRETE  
(DOWN 0.1' ±)



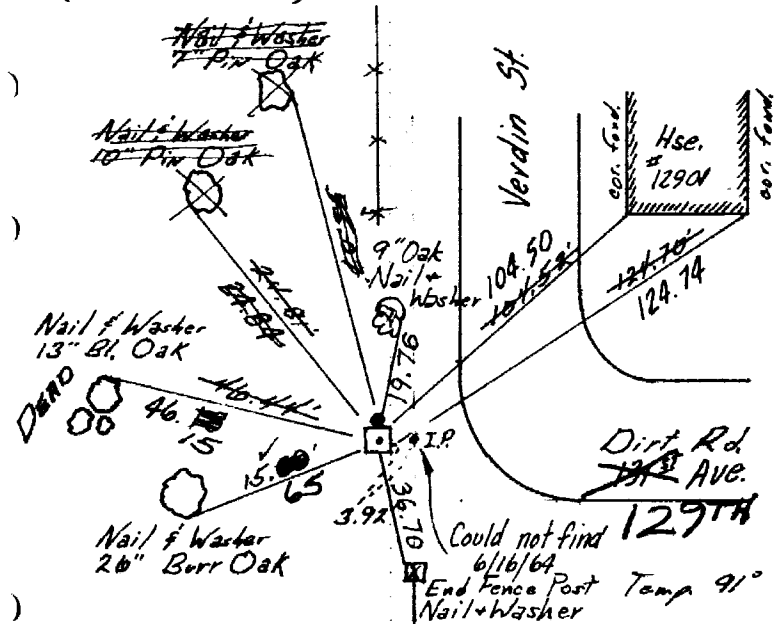
8-2-60 TIE CHECK  
POTTER  
ROBINSON  
JUNE 16, 1977  
R. SPANBERG  
S. BAHEN  
7-3-74 TIE CHECK  
R. FARMER  
N. DAHL  
D. DAHL  
F. STEPHENS  
6-20-80  
B. STEPHENS  
P. ROSS  
P. HORNBY

ROLAND W. ANDERSON  
COUNTY SURVEYOR  
ANOKA COUNTY, MINNESOTA  
TEMPERATURE CORRECTED  
AND HORIZONTALLY  
TAPED MEASUREMENTS

18

E. 1/4 COR. SEC 4 - T31 - R 24

Set Cast Iron Mon. in  
Place Of Conc.  
(Down .1' ±)  
Conc. Mon. down .2'  
I.P. on North



TEMPERATURE CORRECTED  
AND HORIZONTALLY  
TAPED MEASUREMENTS

Tie Check  
July 22, 1966  
H. Larson  
D. Potter  
G. Reimer  
Tie Check  
July 21, 1970  
D. Powell  
R. Brien  
B. Olson

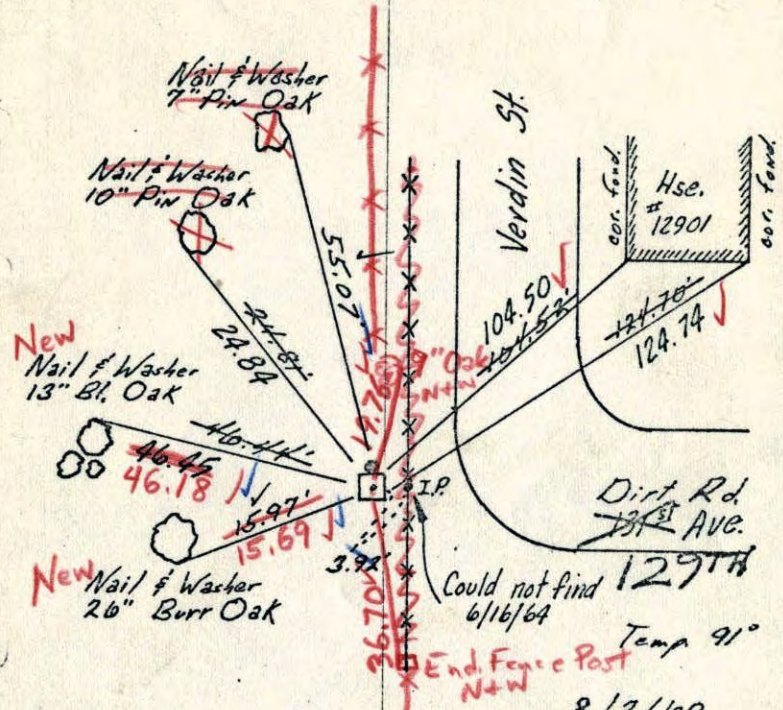
8/2/60  
Potter  
Robinson  
Retie 6/16/64  
Tie Check M. D. Anderson  
7/3/74 R. Carlson  
R. Farmer  
N. D.  
D. D.

ROLAND W. ANDERSON  
COUNTY SURVEYOR  
ANOKA COUNTY, MINNESOTA

X

E 1/4 Cor. Sec 4 - T31 - R24

Conc. Mon. down .2'  
I.P. on North



TEMPERATURE CORRECTED  
AND HORIZONTALLY  
TAPED MEASUREMENTS

Tie Check  
July 22, 1966  
H. Larson  
D. Potter  
G. Reimer

8/2/60  
Potter  
Robinson  
Retie 6/16/64  
M. D. Anderson  
R. Carlson

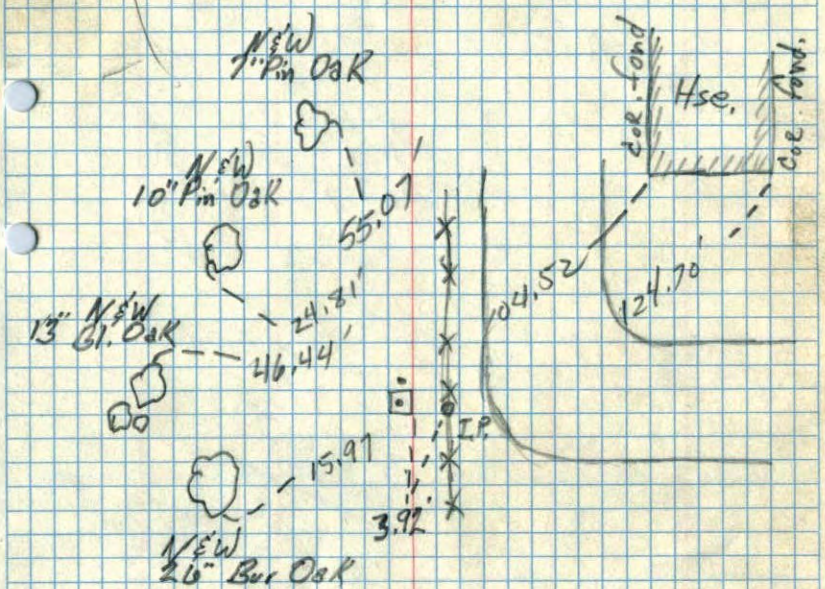
7/21/70  
#10-740V  
D. Powell  
R. Brian  
B. Olson

ROLAND W. ANDERSON  
COUNTY SURVEYOR  
ANOKA COUNTY, MINNESOTA

18

E 1/4 Cor Sec 4 - T 31 - R 24

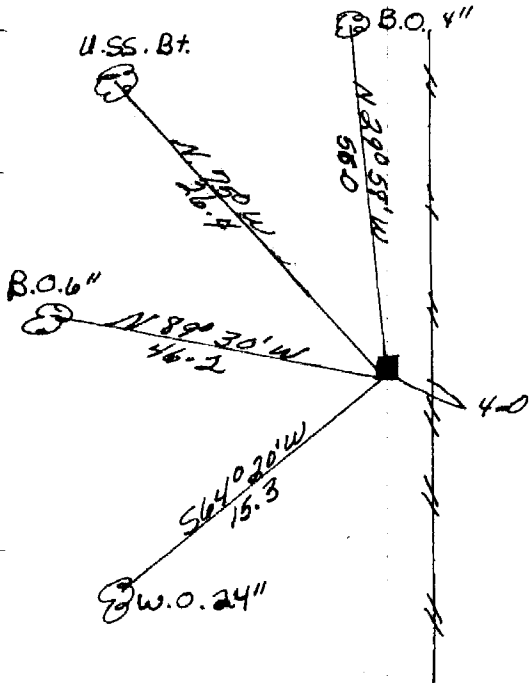
Conc. Mon. down .2'  
I.P. on North



9/16/60

8/2/60  
Potter  
Robinson  
91°

E 1/4 corner of Sec. 4 T. 31. R. 24  
U.S. B.T. Stump with old square nail driven in rotted  
away stump about 18" diameter up about 16" orig.  
dirt all around.



Dec. 15, 1944  
Cartwright