

CERTIFICATE OF LOCATION OF GOVERNMENT CORNER

County of Anoka

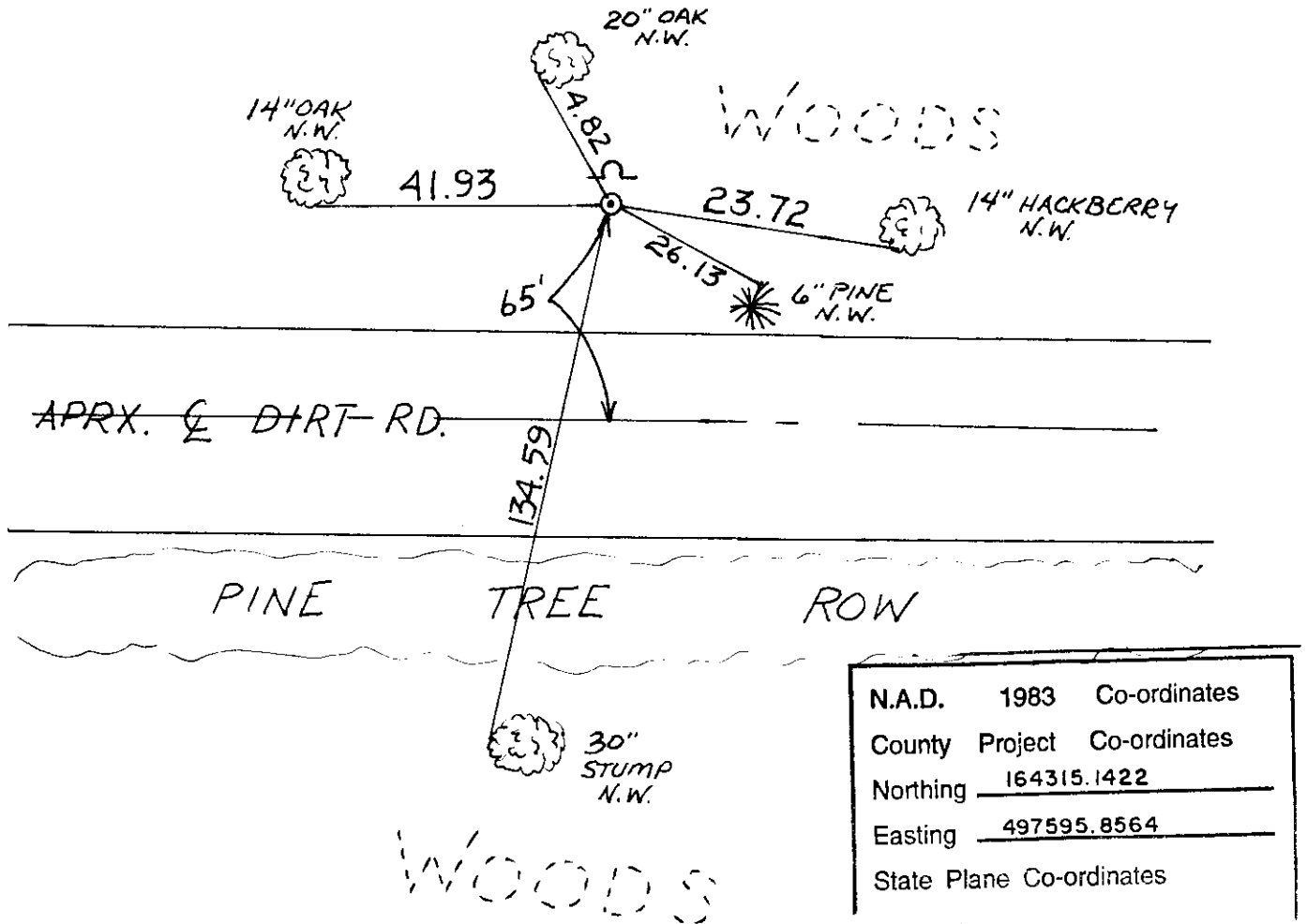
State of Minnesota

NORTH 1/4 Corner of Sec. 1 Township 31 Range 24

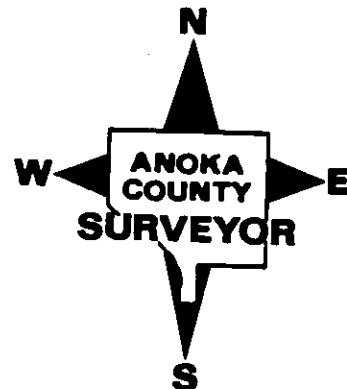
I hereby certify that on the 15 day of DEC., 1944 I found the described corner which was evidenced by CONC. MON.

and I further certify that to perpetuate the location of said corner, I did, at the exact location thereof, place a permanent marker consisting of CAST IRON MON. SIGN AND POST NORTH SIDE

which reference or witness monuments are located in the manner following:

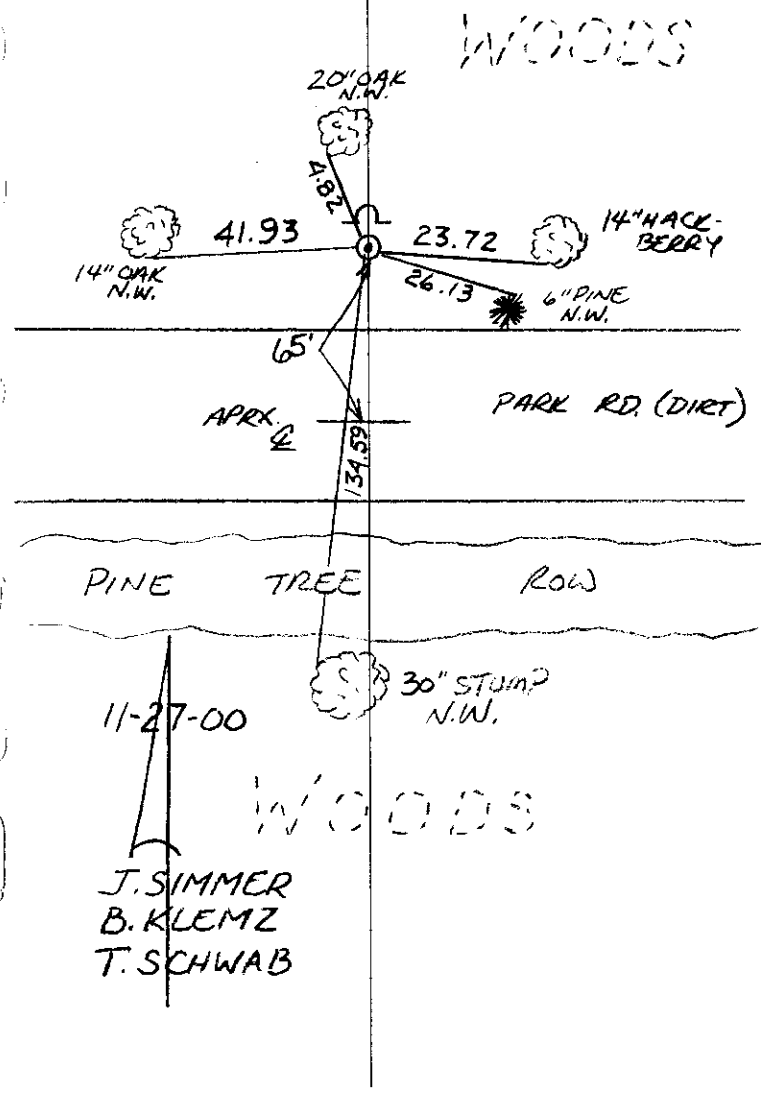


Revised date	Revised date	Revised date
<u>6-20-86</u>		
<u>8-24-94</u>		
<u>11-27-00</u>		



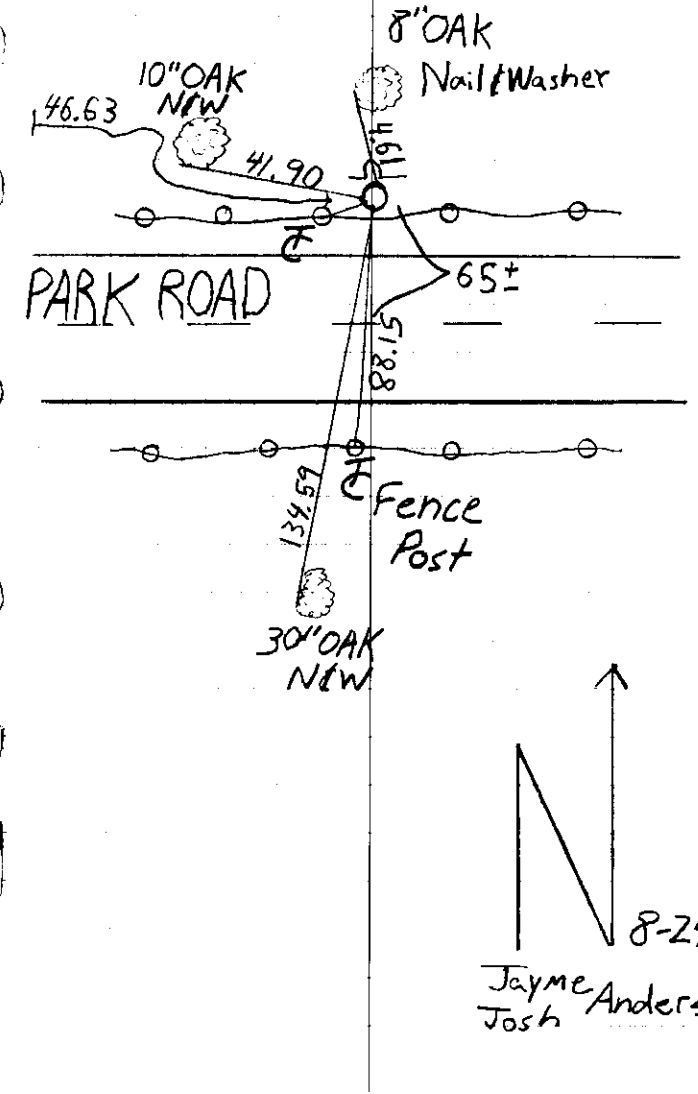
NORTH 1/4 SEC 1 T-31 R-24
RETIED AND GPS CAST
IRON MON.


NATIONAL FOREST
NO. 446



N 1/4 Sec. 1 T. 31 R. 24
Retie Cast Iron Mon.

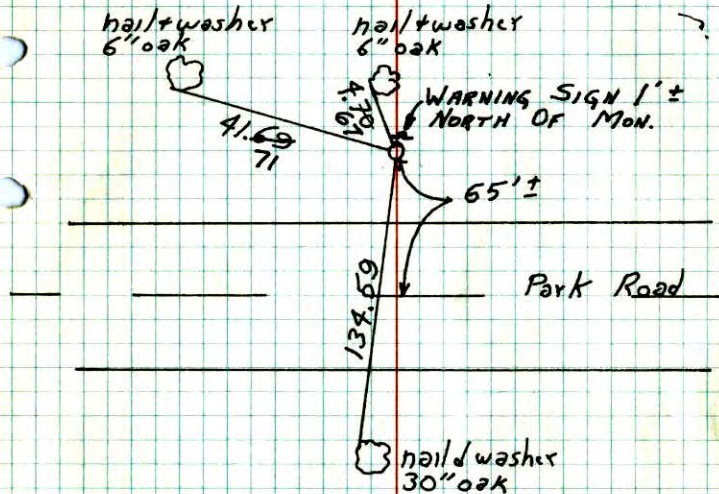
NATIONAL FOREST
NO. 446




 8-24-94
 Jayme Anderson
 Josh Anderson

2
N 1/4 Cor. Sec. 1 T31 R24

Placed cast iron monument in place
of concrete mon.



TIE CHECK
JUNE 14, 1977
R. SPAINES
S. BRIEN
J. STEPHENS

23
Oct. 3, 1970

M.D. Anderson
H. Larson
W. Westlander

TIE CHECK
6-20-80
B. STEPHENS
P. ROSS
P. HORNBY

Tie Check
7/1/74
R. Farmer
N.D.
D.D.

TEMPERATURE CORRECTED
AND HORIZONTALLY
TAPED MEASUREMENTS

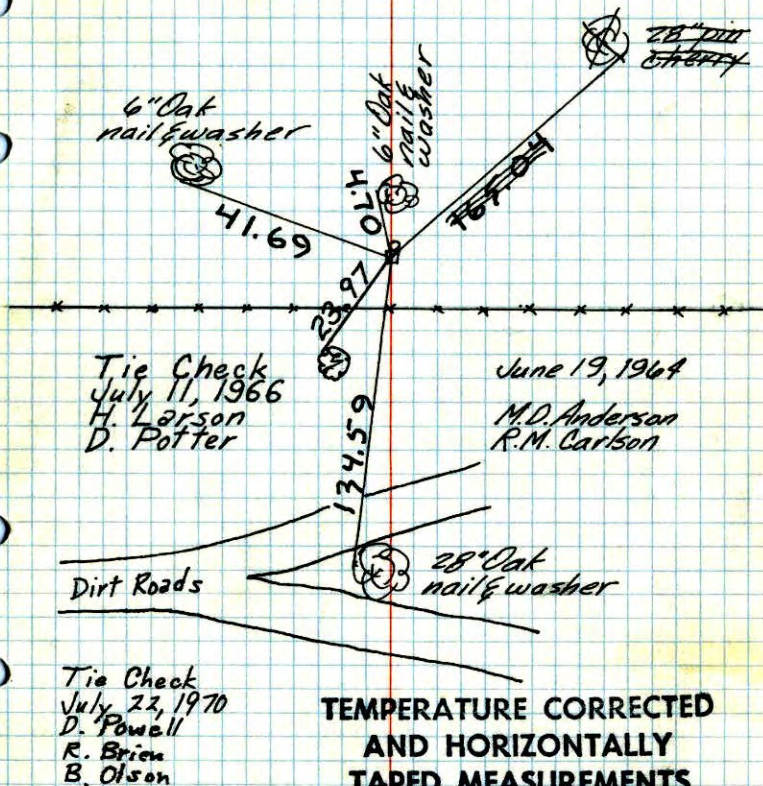
ROLAND W. ANDERSON
COUNTY SURVEYOR
ANOKA COUNTY, MINNESOTA

2
N 1/4 Cor. Sec. 1-T31-R24

found Conc. Monument from ties by
H.A. Cartwright of Dec. 15, 1944

Placed 1/2" Iron pipe on N. face

Conc. mon. down 0.2' & 2.5' N. of E&W.
fence line



Tie Check
July 22, 1970
D. Powell
R. Brien
B. Olson

TEMPERATURE CORRECTED
AND HORIZONTALLY
TAPED MEASUREMENTS

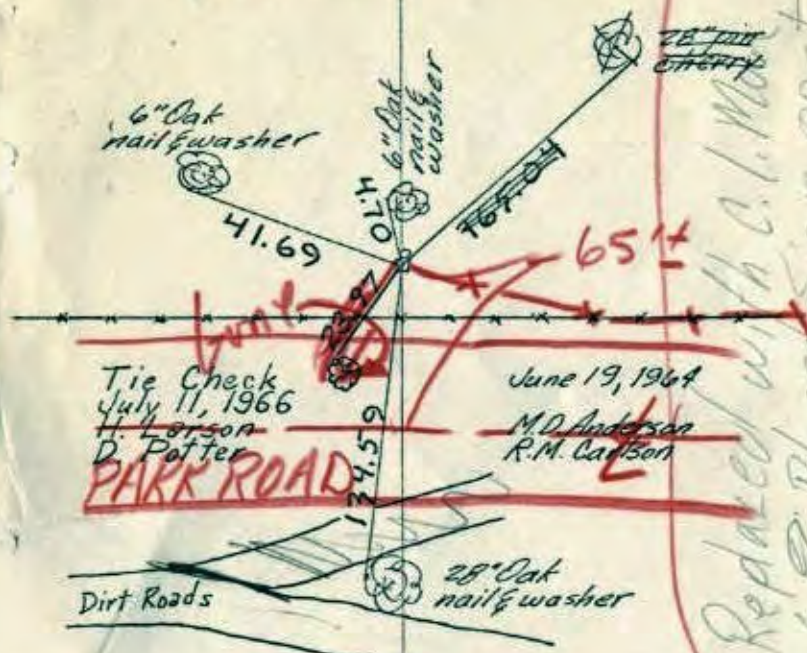
ROLAND W. ANDERSON
COUNTY SURVEYOR
ANOKA COUNTY, MINNESOTA

N¹/₄ Cor. Sec. 1-T31-R24

Found Conc. Monument from ties by
H.A. Cartwright of Dec. 15, 1944

Placed 1/2" Iron pipe on N. face

Conc. mon. down 0.2' & 2.5" N. of E&W.
fence line



Tie Check
July 11, 1966
H. Larson
D. Potter

June 19, 1964

M.D. Anderson
R.M. Carlson

PARK ROAD

Dirt Roads

28" Oak
nail & washer

Tie Check
July 22, 1970
D. Powell
R. Brien
B. Olson

TEMPERATURE CORRECTED
AND HORIZONTALLY
TAPED MEASUREMENTS

ROLAND W. ANDERSON
COUNTY SURVEYOR
ANOKA COUNTY, MINNESOTA

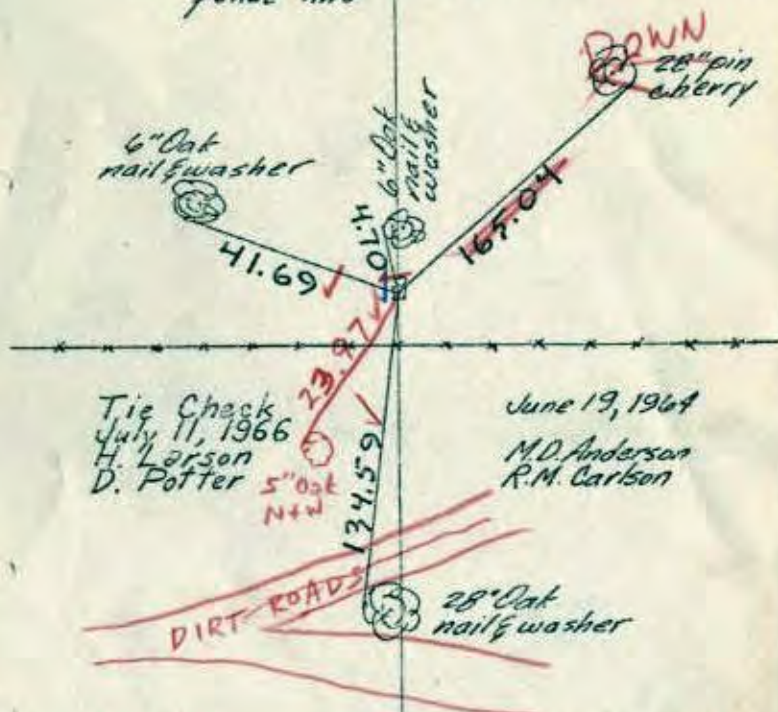
Replaced with C.L. Monument
 & Placed sign post
 4 1/2' N. of Mon. (with sign)
 Dec 3, 1964
 M.D. Anderson

N¹/₄ Cor. Sec. 1-T31-R24

Found Conc. Monument from ties by
H.A. Cartwright of Dec. 15, 1944

Placed 1/2" Iron pipe on N. face

Conc. mon. down 0.2' & 2.5" N. of E&W.
fence line



Tie Check
July 11, 1966
H. Larson
D. Potter

June 19, 1964

M.D. Anderson
R.M. Carlson

DIRT ROADS

28" Oak
nail & washer

7/22/70
#10-76°
D. Powell
R. Brien
B. Olson

TEMPERATURE CORRECTED
AND HORIZONTALLY
TAPED MEASUREMENTS

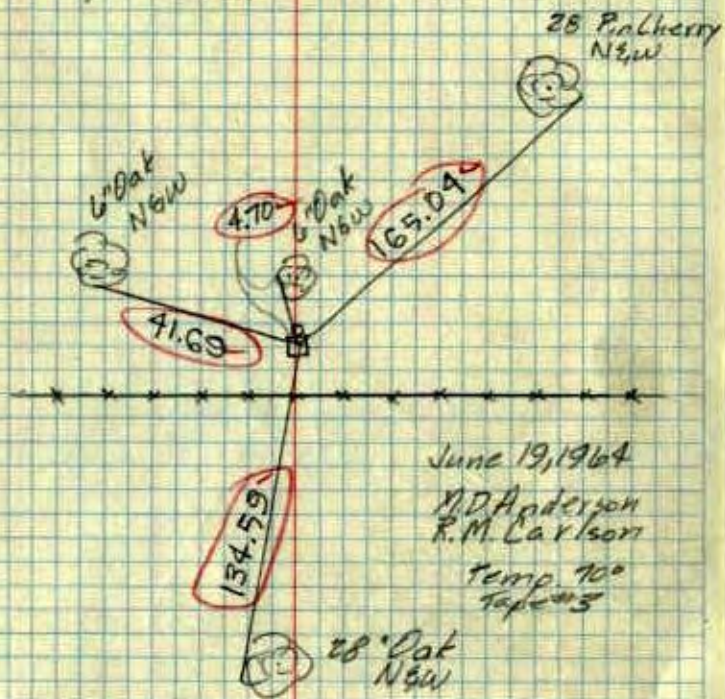
ROLAND W. ANDERSON
COUNTY SURVEYOR
ANOKA COUNTY, MINNESOTA

X

N¹/₄ Cor. Sec. 1-T31-R24

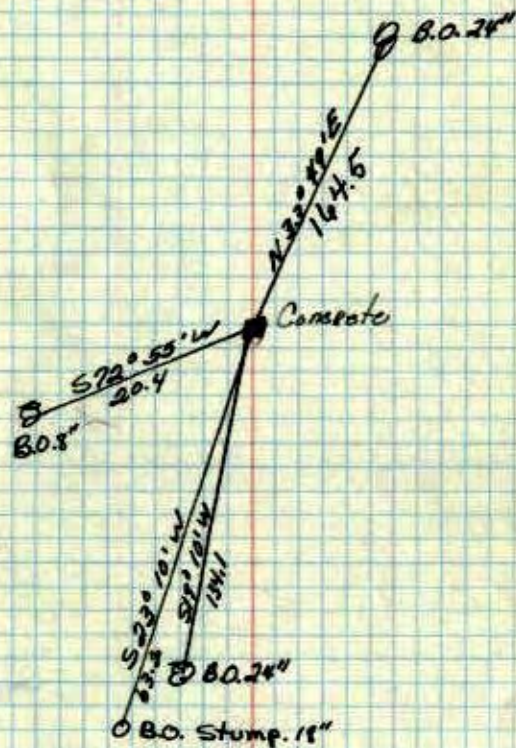
Found Conc. Monument from Dec. 15, 1944
ties by H.A. Cartwright

Placed 1/2" Iron pipe on N face
Conc. Mon. down 0.2' & 2.5' N of E & W.
fence line



N¹/₄ Cor. of Sec. 1, T.31. R.24

Concrete Monument down 0.3 ft.



Dec. 15, 1944
H. A. Cartwright

OK
on 2