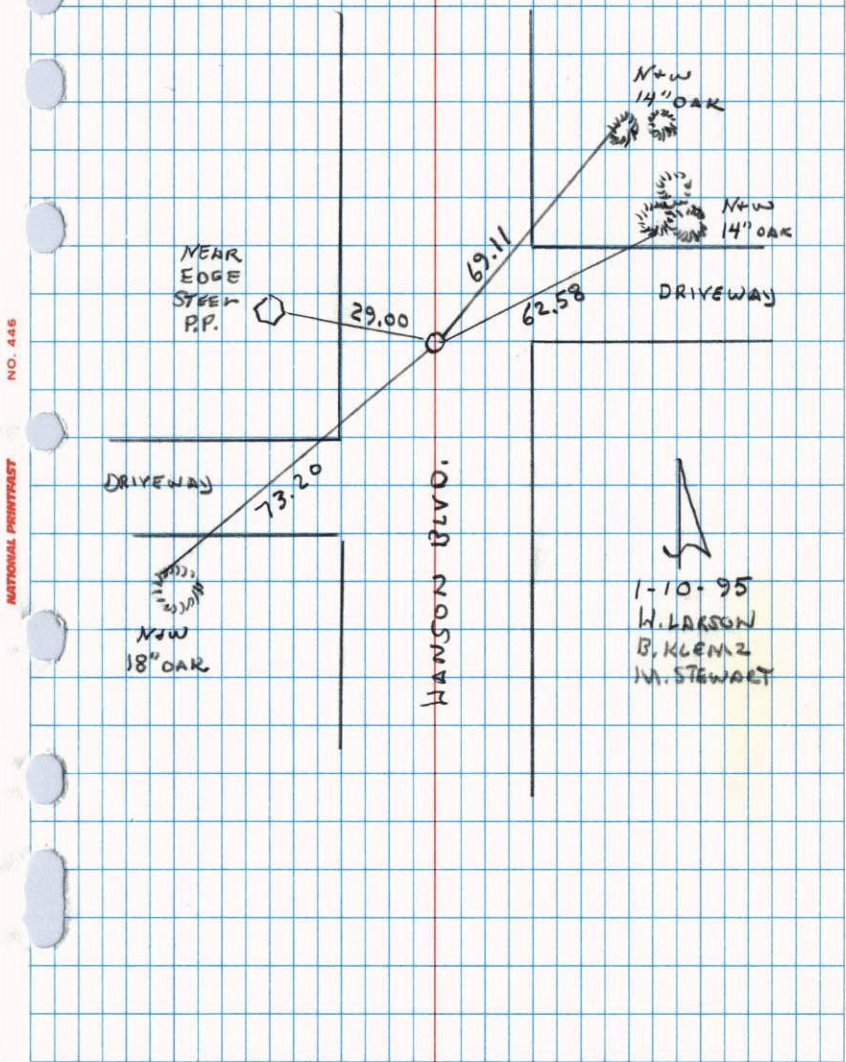


WEST 1/4 CORNER SEC. 2 T31 R24

RETIED CAST IRON MONUMENT



NO. 446 NATIONAL INSTRUMENT

1-10-95
W. LARSON
B. KLENZ
M. STEWART

W. 1/4 COR. SEC. 2 T. 31 R. 24

CAST IRON MONUM.
PK'S 2.0' N. & E.
8-19-69
D. POWELL
R. OLSON
R. BRIEN

Aug. 31, 1964
M.D. ANDERSON
J. DWYLA

TIE CHECK
7-2-74
R. FARMER
D. DAHL
D. DAHL

NEAR FACE OF
OCTAGON POWER
POLE #138

16" OAK
NAIL & WASHER

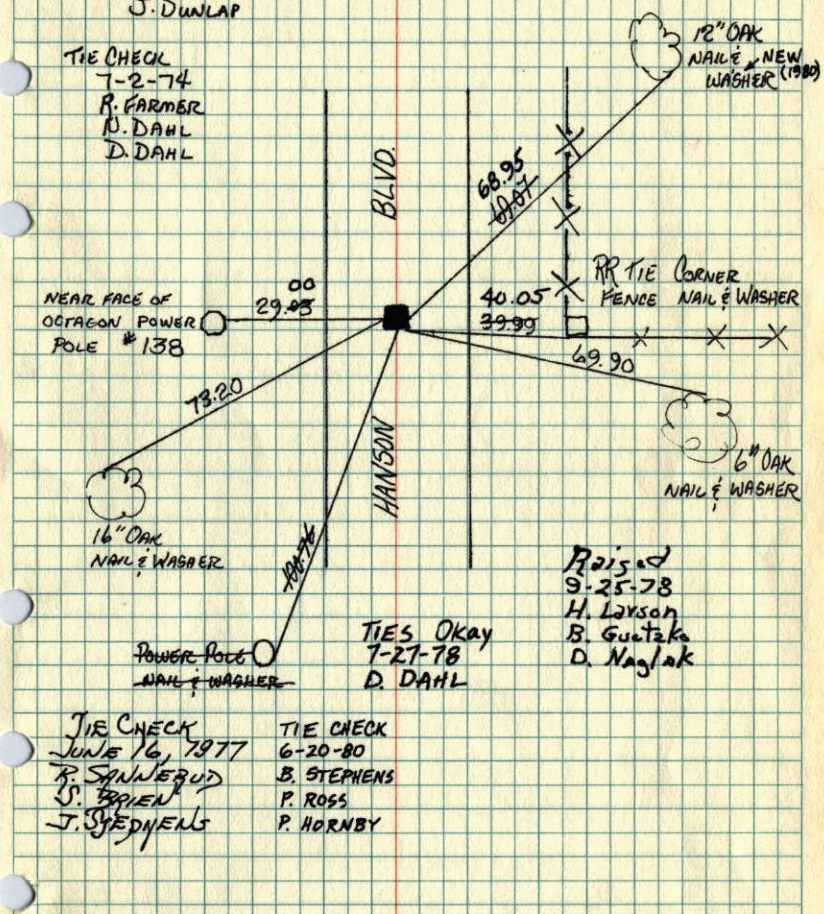
POWER POLE
NAIL & WASHER

TIE CHECK
JUNE 16, 1977
R. SANNEBUD
J. BRIEN
J. SPEDYENS

TIE CHECK
6-20-80
B. STEPHENS
P. ROSS
P. HORNBY

TIES Okay
7-27-78
D. DAHL

Raised
9-25-78
H. Larson
B. Gustafson
D. Naglak



ROLAND W. ANDERSON
COUNTY SURVEYOR
ANOKA COUNTY, MINNESOTA

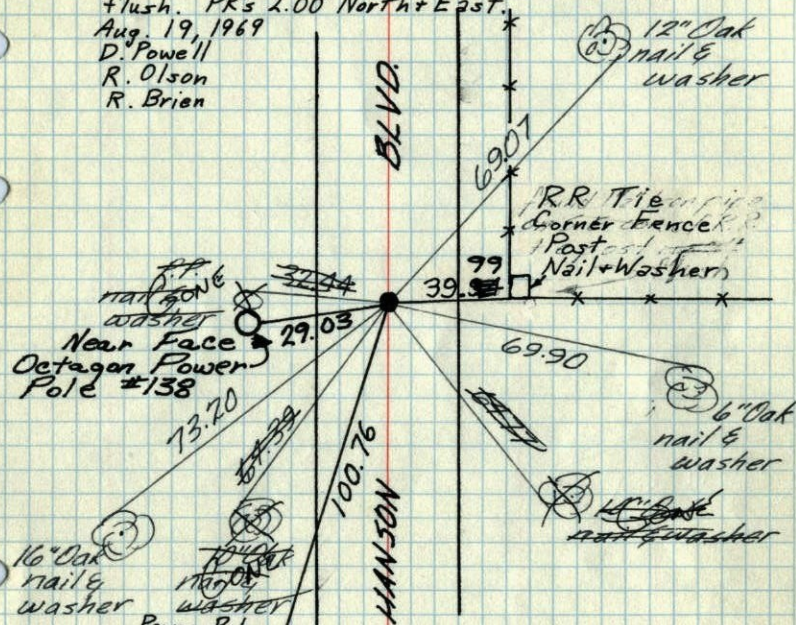
TEMPERATURE CORRECTED
AND HORIZONTALLY
TAPED MEASUREMENTS

W. 1/4 Cor. Sec. 2-T31-R24

found 4" iron pipe from old remaining Anoka county ties

iron pipe down 0.5"
Replaced Iron Pipe with Cast Iron Monument

flush. PK's 2.00' North + East.
Aug. 19, 1969
D. Powell
R. Olson
R. Brien



Power Pole Nail + Washer
Tie Check
July 22, 1966
H. Larson
D. Potter
G. Reimer
Checked for const.
Aug. 26, 1968
D. Powell
R. Olson
P. Pich
Tie Check
7/2/74
R. Farmer
N. D.
D. D.

Aug. 31, 1964
M. D. Anderson
J. Dunlap

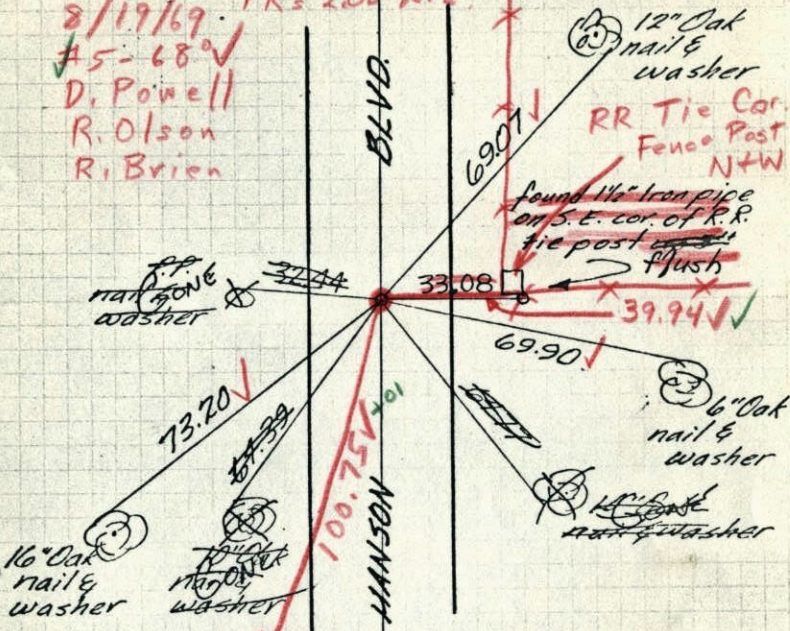
ROLAND W. ANDERSON
COUNTY SURVEYOR
ANOKA COUNTY, MINNESOTA
TEMPERATURE CORRECTED
AND HORIZONTALLY
TAPED MEASUREMENTS

W. 1/4 Cor. Sec. 2-T31-R24

found 1/2" iron pipe from old remaining Anoka county ties

iron pipe down 0.5" PK in place.
Reset C.I. Mon flush after const.

8/19/69
PK's 2.00' N+E
D. Powell
R. Olson
R. Brien

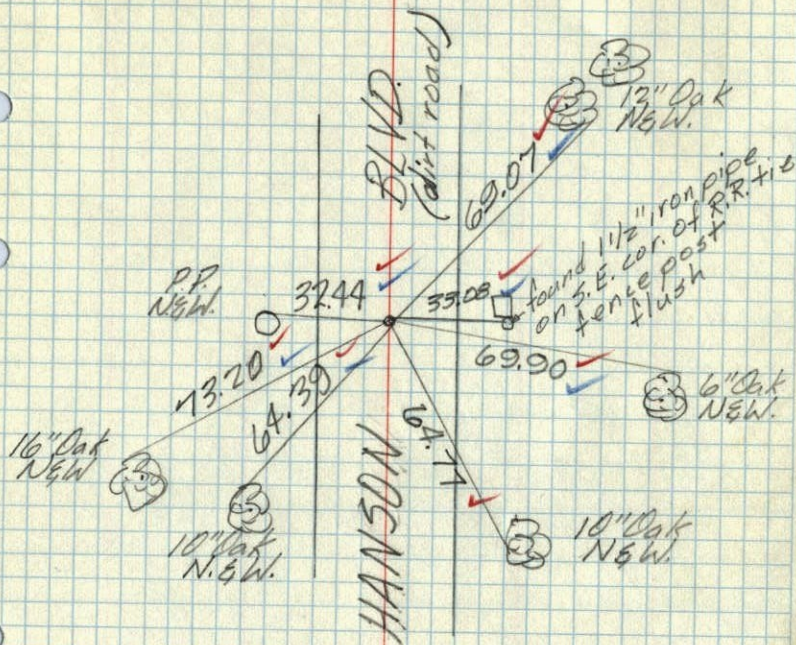


OP.P. N+W
Tie Check
July 22, 1966
H. Larson
D. Potter
G. Reimer
Checked for const.
Aug. 26, 1968
D. Powell
R. Olson
P. Pich

Aug. 31, 1964
M. D. Anderson
J. Dunlap

ROLAND W. ANDERSON
COUNTY SURVEYOR
ANOKA COUNTY, MINNESOTA
TEMPERATURE CORRECTED
AND HORIZONTALLY
TAPED MEASUREMENTS

W 1/4 Cor. Sec. 2 T31-R24
 found 1/2" iron pipe down 0.5'



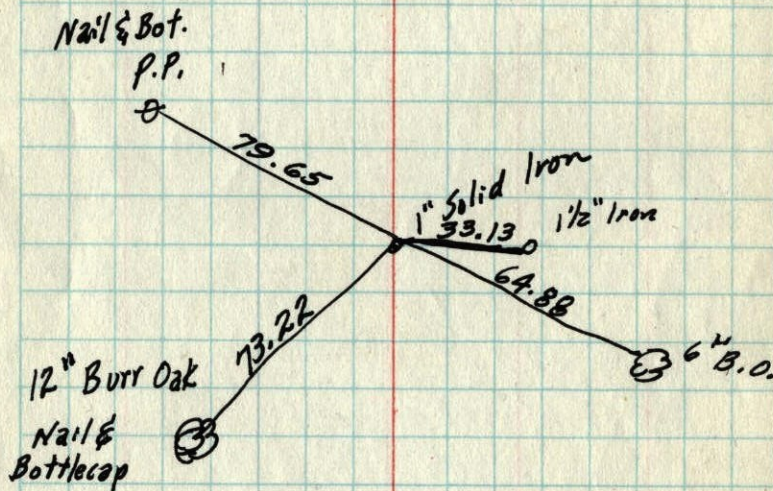
Aug. 31, 1964
 M.D. Anderson
 J. Dunlap
 Temp. 77°
 Tape #1

4/14/59 19

W 1/4 Corn. Sec. 2, T31, R24

Found Solid 1" Iron

Ties as follows:



Roland W. Anderson