

CERTIFICATE OF LOCATION OF GOVERNMENT CORNER

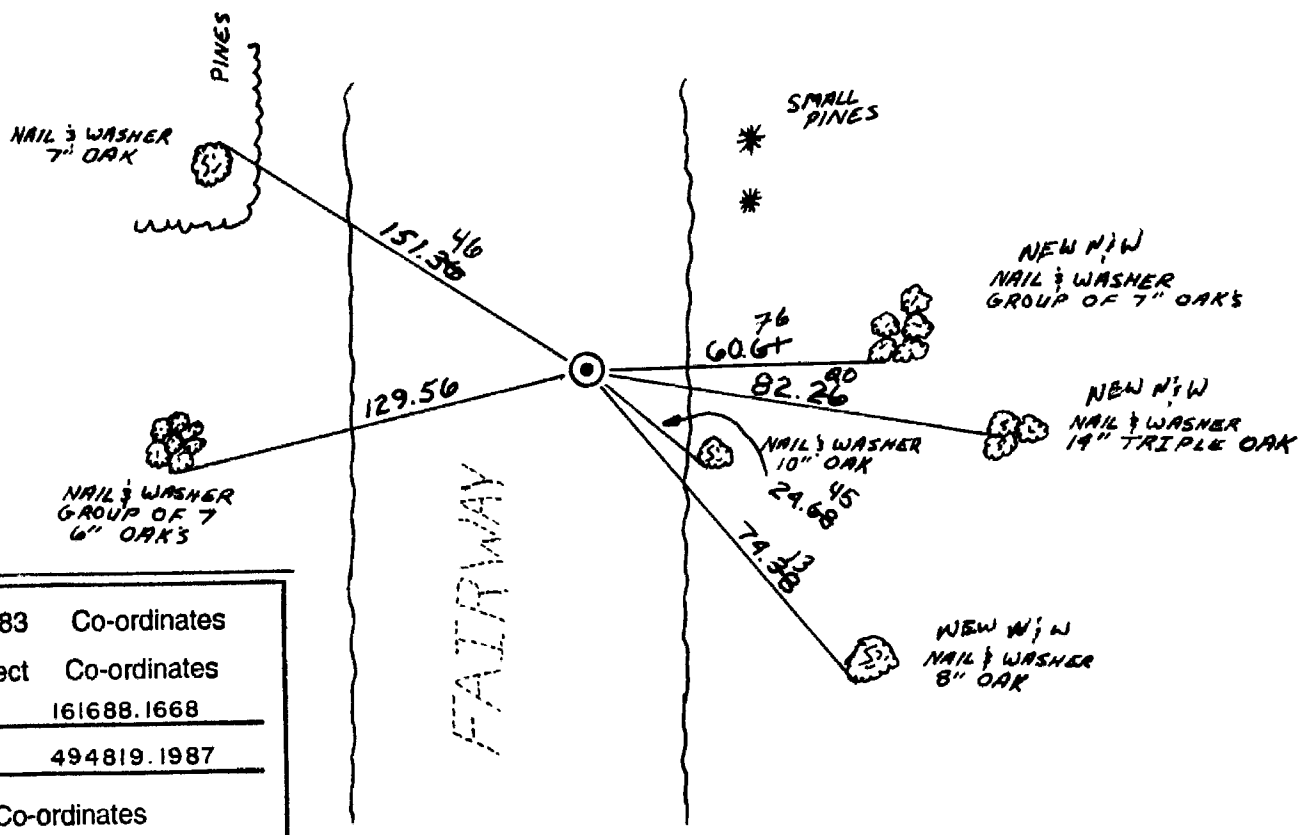
County of Anoka State of Minnesota

WEST ONE QUARTER Corner of Sec. 1 Township 31 Range 24

I hereby certify that on the 7 day of June, 1943, I found the described corner which was evidenced by CONCRETE MONUMENT

and I further certify that to perpetuate the location of said corner, I did, at the exact location thereof, place a permanent marker consisting of CAST IRON MONUMENT

which reference or witness monuments are located in the manner following:



N.A.D.	1983	Co-ordinates
County	Project	Co-ordinates
Northing	<u>161688.1668</u>	
Easting	<u>494819.1987</u>	
State Plane Co-ordinates		
Y	_____	
X	_____	
Date	_____	

Revised date	By
7-22-70	D.P. R.B. B.O.
7-2-74	R. FARMER
6-16-77	R.S. S.B. J.S.
6-27-80	B.S. P.R. P.H.
7-15-83	P.R. J.B.
REDRAWN 12-12-83	R. KREUSER
6-17-86	D. ROSS

Minnesota State Plane Coordinates
South Zone

Y _____ X _____

County Surveyor Date

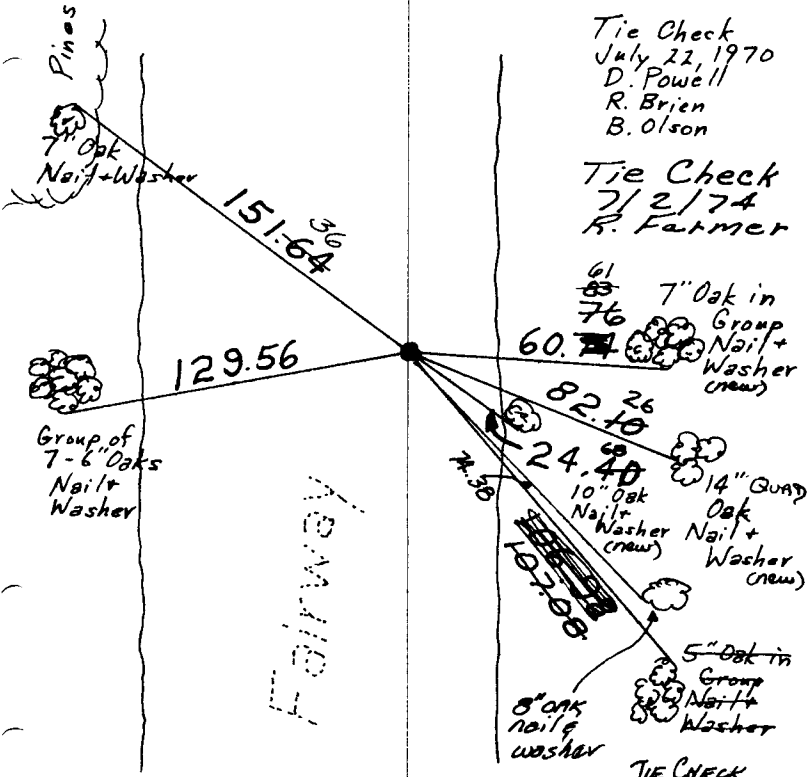
Registered Land Surveyor No. _____

W 1/4 Cor. Sec. 1 - T31 - R24

Placed Cast Iron Monument flush over
down 1.5
remains of Concrete Monument in Golf Course.
Nov. 1968
M. D. Anderson

Tie Check
July 22, 1970
D. Powell
R. Brien
B. Olson

Tie Check
7/2/74
R. Farmer



61
76
60.74
7" Oak in Group Nail + Washer (new)

82.26
24.40
10" Oak Nail + Washer (new)
14" QUAD Oak Nail + Washer (new)

5" Oak in Group Nail + Washer
8" Oak nail + washer

TIE CHECK
6-27-80
B. STEPHENS
P. ROSS
P. HORNBY
TIE CHECK
JUNE 16, 1977
P. SPANBERG
S. BRIEN
T. STEPHENS

TEMPERATURE CORRECTED
AND HORIZONTALLY
TAPED MEASUREMENTS

ROLAND W. ANDERSON
COUNTY SURVEYOR
ANOKA COUNTY, MINNESOTA

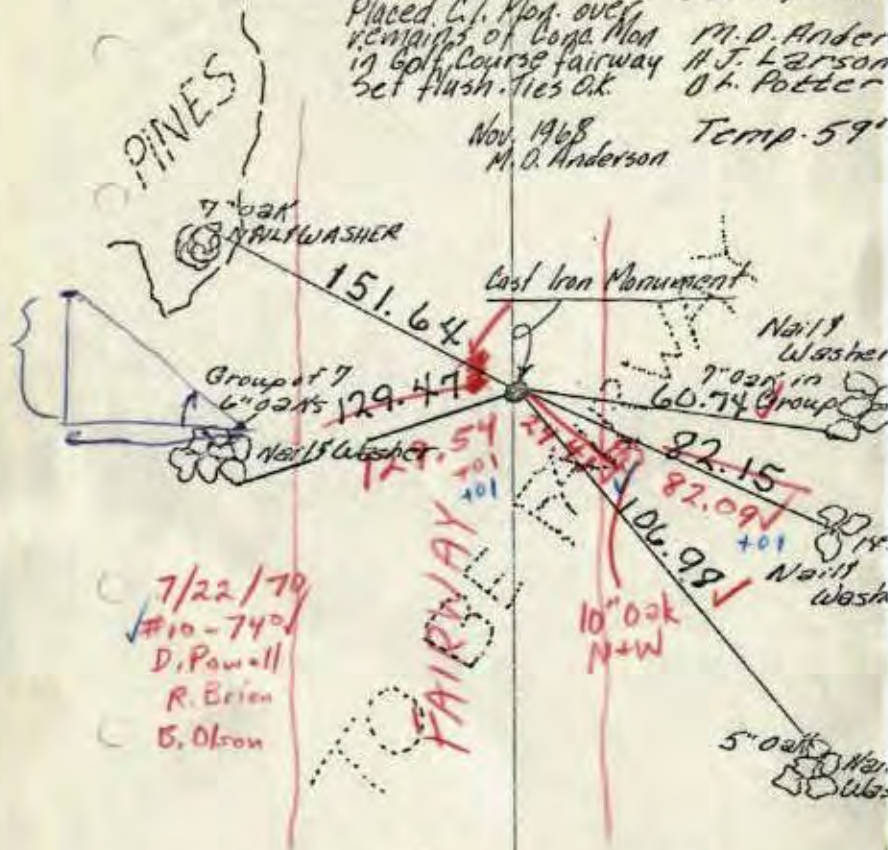
X

W 1/4 Cor. Sec. 1, T31, R24

One. mon to be removed along with all ties. Const. of Golf Course by the City of Coon Rapids

Placed C.I. Mon. over remains of Cone Mon in Golf Course fairway Set flush. Ties O.K.
Oct 13, 1966
M.D. Anderson
H.J. Larson
O.H. Potter

Nov. 1968
M.D. Anderson
Temp. 59°



7/22/70
#10-740
D. Powell
R. Brien
E. Olson

TEMPERATURE CORRECTED AND HORIZONTALLY TAPED MEASUREMENTS
ROLAND W. ANDERSON
COUNTY SURVEYOR
ANOKA COUNTY, MINNESOTA

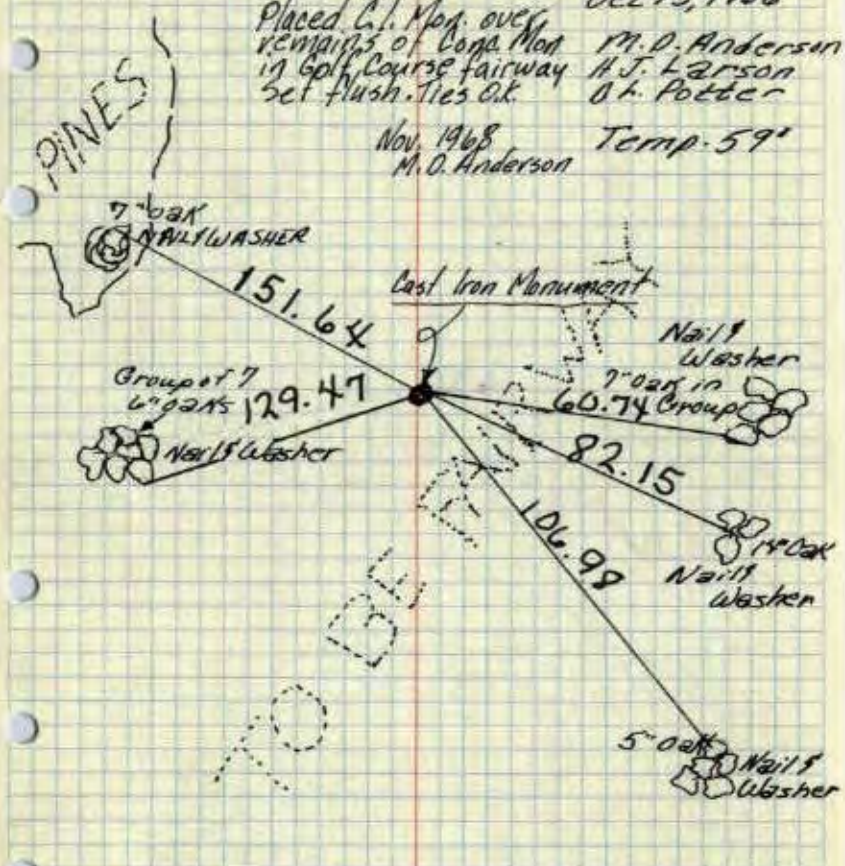


W 1/4 Cor. Sec. 1, T31, R24

One. mon to be removed along with all ties. Const. of Golf Course by the City of Coon Rapids

Placed C.I. Mon. over remains of Cone Mon in Golf Course fairway Set flush. Ties O.K.
Oct 13, 1966
M.D. Anderson
H.J. Larson
O.H. Potter

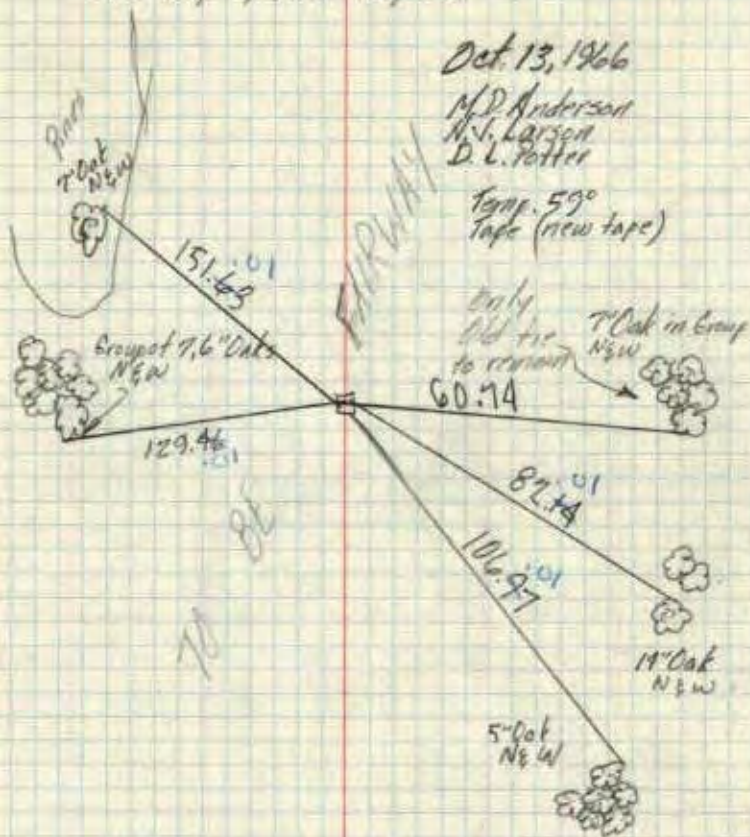
Nov. 1968
M.D. Anderson
Temp. 59°



TEMPERATURE CORRECTED AND HORIZONTALLY TAPED MEASUREMENTS
ROLAND W. ANDERSON
COUNTY SURVEYOR
ANOKA COUNTY, MINNESOTA

W 1/4 Cor. Sec. 1-T31-R24

Conc. Man. to be removed along with
all the ties. Const. of Golf Course by
the City of Deer Rapids



Oct 13, 1966

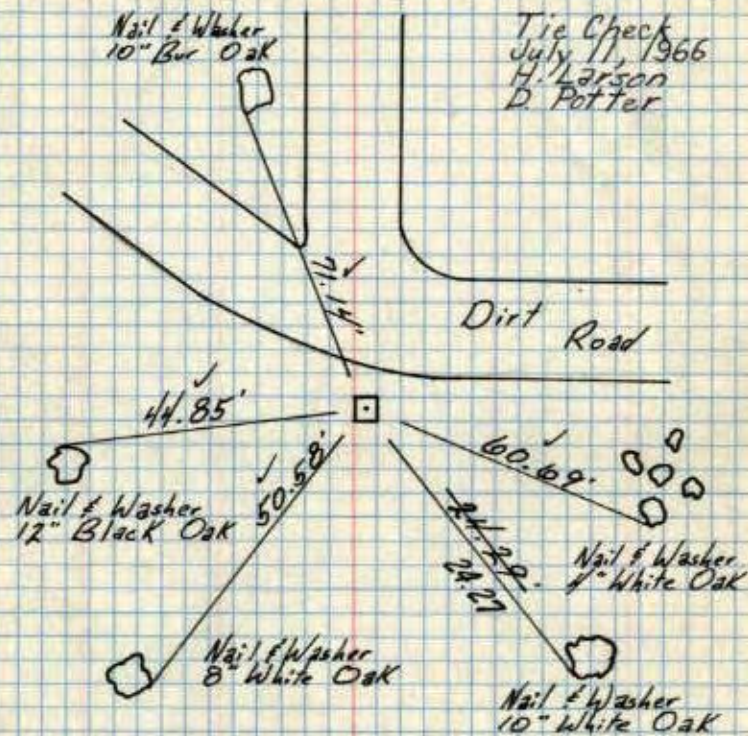
M. D. Anderson
N. L. Larson
D. L. Potter

Temp. 59°
Tape (new tape)

only
did tie
to remain
7' Oak in Group
N&W

W 1/4 Cor. Sec 1-T31-R24

Conc. Man. Flash
Iron Pipe on North side Flash



Tie Check
July 11, 1966
H. Larson
D. Potter

8/3/60

Bill Rogers
Kathy Carlson

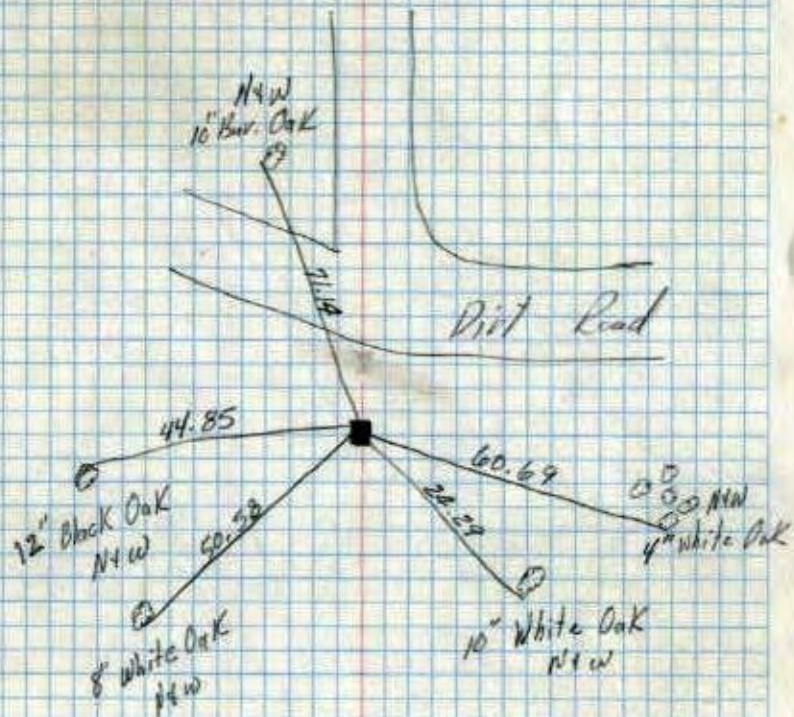
Retie 6/8/64

M. D. Anderson
R. Carlson

TEMPERATURE CORRECTED
AND HORIZONTALLY
TAPED MEASUREMENTS

ROLAND W. ANDERSON
COUNTY SURVEYOR
ANOKA COUNTY, MINNESOTA

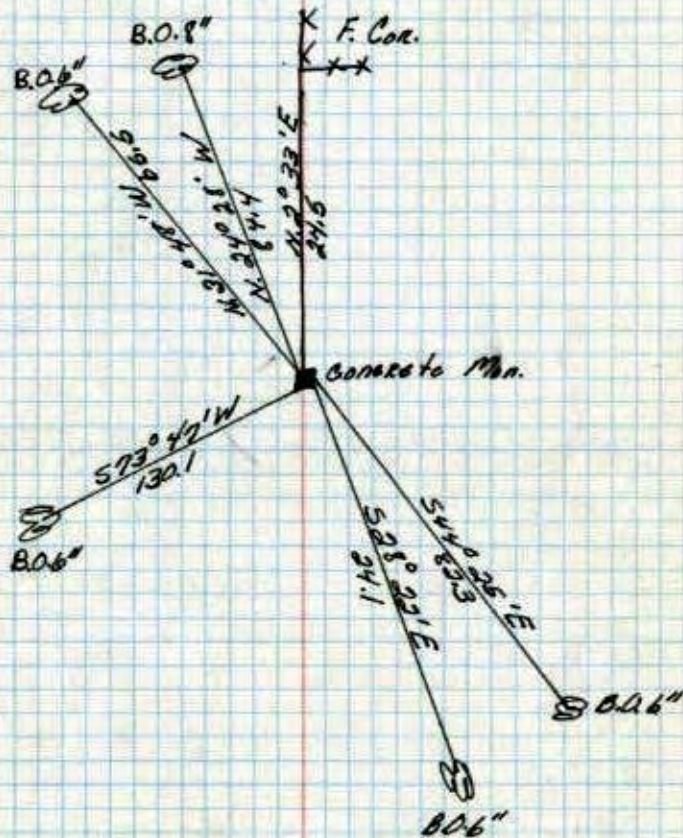
W 1/4 Cor. Sec. 1 T31N
 Con. Man. Flush



19/10/60

Temp.
 8/3/60
 Bill Kiers
 Randy Carlson

W 1/4 Cor. of Sec 1, T31N, R. 24W
 Concrete Man. Flush



June 7, 1943
 H. A. Cartwright