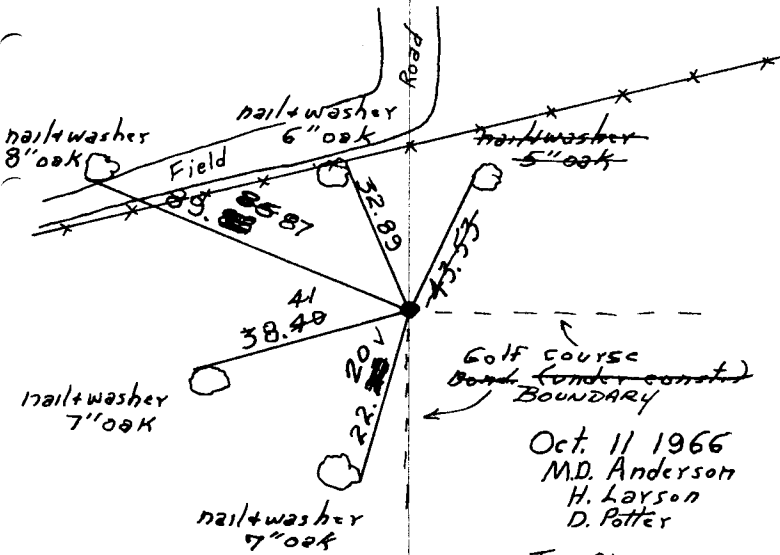


W 1/2 Cor. of NW 1/4 Sec. 1, T31, R24

Set cast iron monument from area
resurvey. Found iron pipe at 1/2 Cor.
c.i. same position as iron pipe. Down 0.4'±.



Oct. 11 1966
M.D. Anderson
H. Larson
D. Potter

Tie Check
July 21, 1970
D. Powell
R. Brien
B. Olson

Tie Check
7/2/74
R. Farmer
N. D.
D. D.

TIE CHECK
JUNE 16, 1977
R. SPANLERUP
S. BRIEN
J. STEPHENS

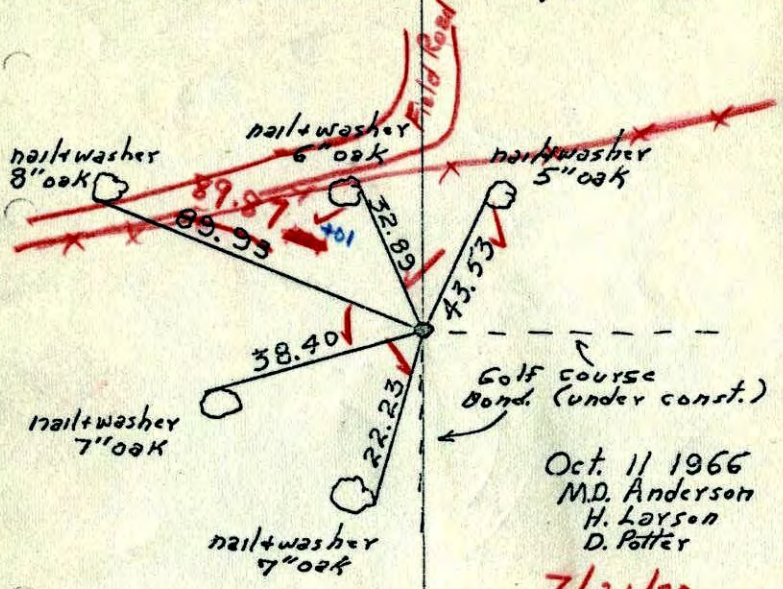
TIE CHECK
6-23-80
B. STEPHENS
P. ROSS
P. HORNBY
D. NAGLAK

TEMPERATURE CORRECTED
AND HORIZONTALLY
TAPED MEASUREMENTS

ROLAND W. ANDERSON
COUNTY SURVEYOR
ANOKA COUNTY, MINNESOTA

W 1/4 Corn. of NW 1/4 Sec. 1, T31, R24

Set cast iron monument from area resurvey. Found iron pipe at 1/4 Cor. c.i. same position as iron pipe. down 0.4'±.



Oct. 11 1966
M.D. Anderson
H. Larson
D. Potter

7/21/70
#10-740
D. Powell
R. Brien
B. Olson

TEMPERATURE CORRECTED
AND HORIZONTALLY
TAPED MEASUREMENTS

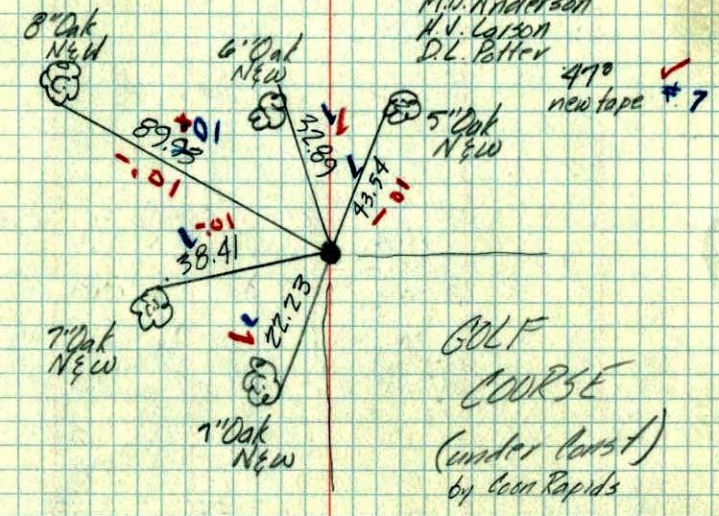
ROLAND W. ANDERSON
COUNTY SURVEYOR
ANOKA COUNTY, MINNESOTA

W 1/4 Corn. of NW 1/4 Sec. 1-T31-R24

set Ch. Mon. from area resurvey
found iron pipe at 1/4 Cor. position 0'±

Oct. 11, 1966

M.D. Anderson
H.V. Larson
D.L. Potter



GOLF COURSE
(under const.)
by Coon Rapids