

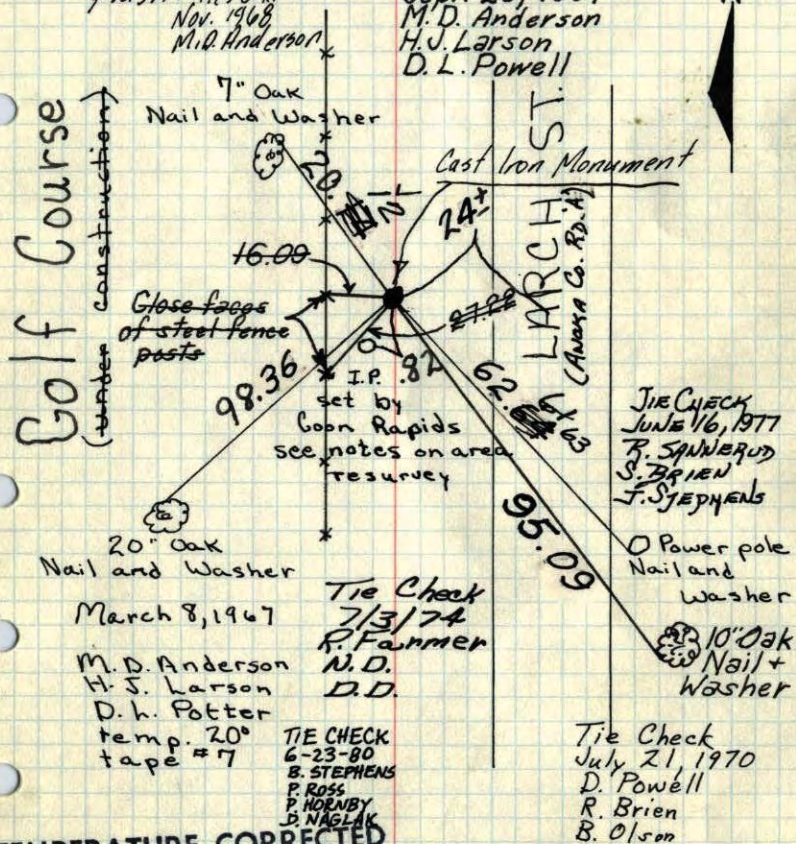
South $\frac{1}{16}$ Cor. of N.W. $\frac{1}{4}$ Sec. 1, T31, R24

Set bridge spike until a time
when frost leaves ground
Set from area resurvey of Bunker
Park area.

Place C.I. Mon.
flush. ties O.K.
Nov. 1968
M.D. Anderson

Additional ties
Sept. 26, 1967
M.D. Anderson
H.J. Larson
D.L. Powell

Golf Course
(under construction)



TEMPERATURE CORRECTED
AND HORIZONTALLY
TAPED MEASUREMENTS

ROLAND W. ANDERSON
COUNTY SURVEYOR
ANOKA COUNTY, MINNESOTA

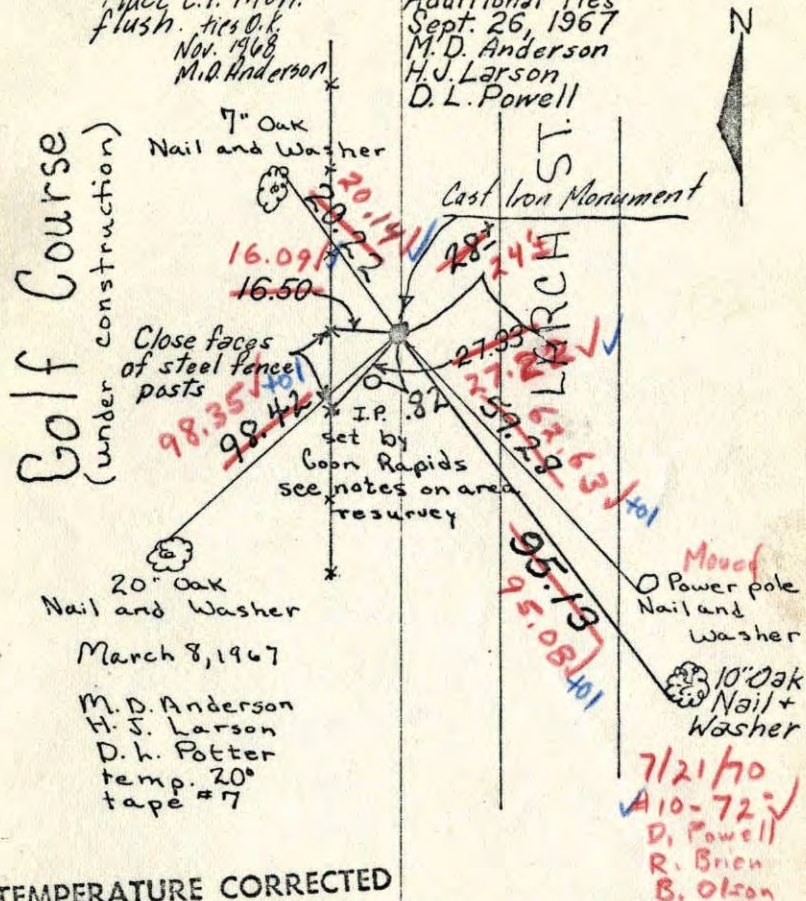
South $\frac{1}{16}$ Cor. of N.W. $\frac{1}{4}$ Sec. 1, T31, R24

Set bridge spike until a time
when frost leaves ground
Set from area resurvey of Bunker
Park area.

Place C.I. Mon.
flush. ties O.K.
Nov. 1968
M.D. Anderson

Additional ties
Sept. 26, 1967
M.D. Anderson
H.J. Larson
D.L. Powell

Golf Course
(under construction)



TEMPERATURE CORRECTED
AND HORIZONTALLY
TAPED MEASUREMENTS

ROLAND W. ANDERSON
COUNTY SURVEYOR
ANOKA COUNTY, MINNESOTA

X ENTERED

200

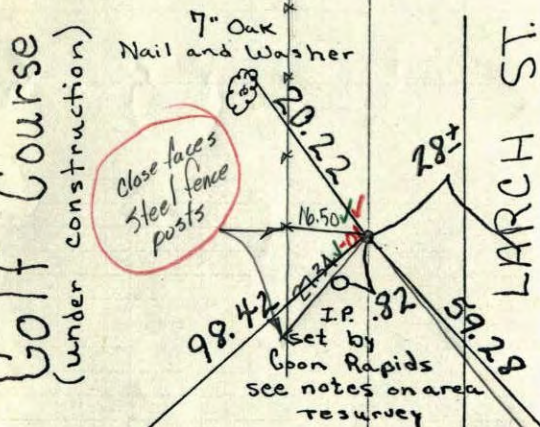
South $\frac{1}{16}$ Cor. of N.W. $\frac{1}{4}$ Sec. 1, T31, R24

Set bridge spike until a time

when frost leaves ground

Set from area resurvey of Bunker
Park area.

Golf Course
(under construction)



20" Oak
Nail and Washer

March 8, 1967

M. D. Anderson
H. J. Larson
D. L. Potter
temp. 20°
tape #7

Additional ties
Sept. 26, 1967
M. D. Anderson
H. J. Larson
D. L. Powell
temp. 35°
tape #5

TEMPERATURE CORRECTED
AND HORIZONTALLY
TAPED MEASUREMENTS

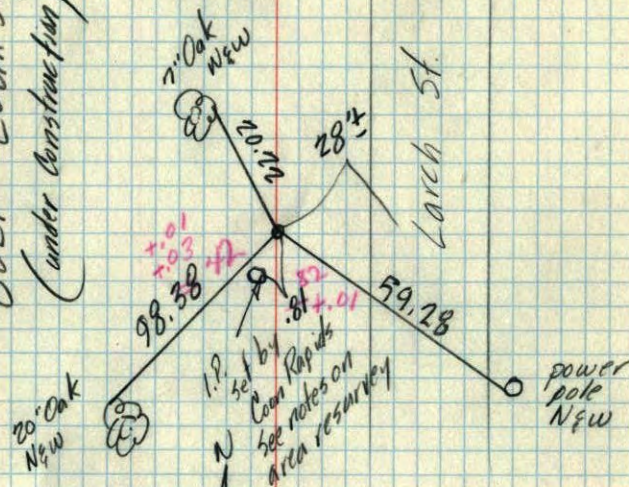
ROLAND W. ANDERSON
COUNTY SURVEYOR
ANOKA COUNTY, MINNESOTA

South $\frac{1}{16}$ Cor. of N.W. $\frac{1}{4}$ Sec. 1, T31, R24

Set bridge spike until a time when
frost leaves ground

Set from area resurvey of Bunker Park area

GOLF COURSE
(under construction)



March 8, 1967

M. D. Anderson
H. J. Larson
D. L. Potter

Temp. 20°
Tape #7