

# Center of NW 1/4 Sec. 1-T31-R24

~~Set bridge spike from area resurvey~~

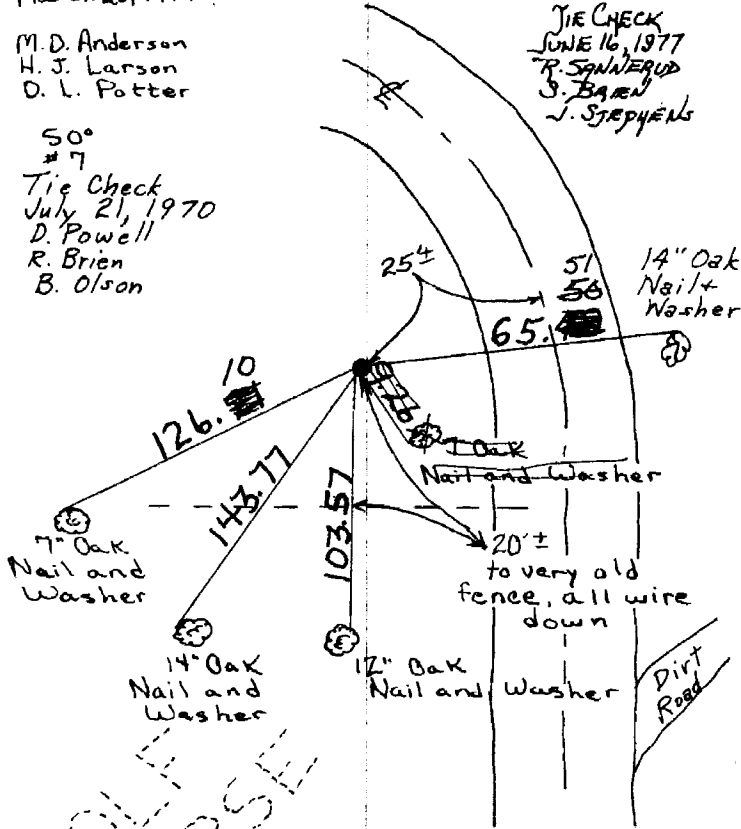
Cast Iron Monument in place.

March 28, 1967

M. D. Anderson  
H. J. Larson  
D. L. Potter

TIE CHECK  
JUNE 16, 1977  
R. SPANNERUP  
J. BAREN  
J. STEPHENS

50°  
#7  
Tie Check  
July 21, 1970  
D. Powell  
R. Brien  
B. Olson



GOLF COURSE

TIE CHECK Tie Check  
6-23-80 7/3/74  
B. STEPHENS, Farmer  
P. ROSS  
P. HORNBY N. D.  
D. HAGLAK D. D.

ROLAND W. ANDERSON  
COUNTY SURVEYOR  
ANOKA COUNTY, MINNESOTA

TEMPERATURE CORRECTED  
AND HORIZONTALLY  
TAPED MEASUREMENTS

X

200

# Center of NW 1/4 Sec. 1-T31-R24

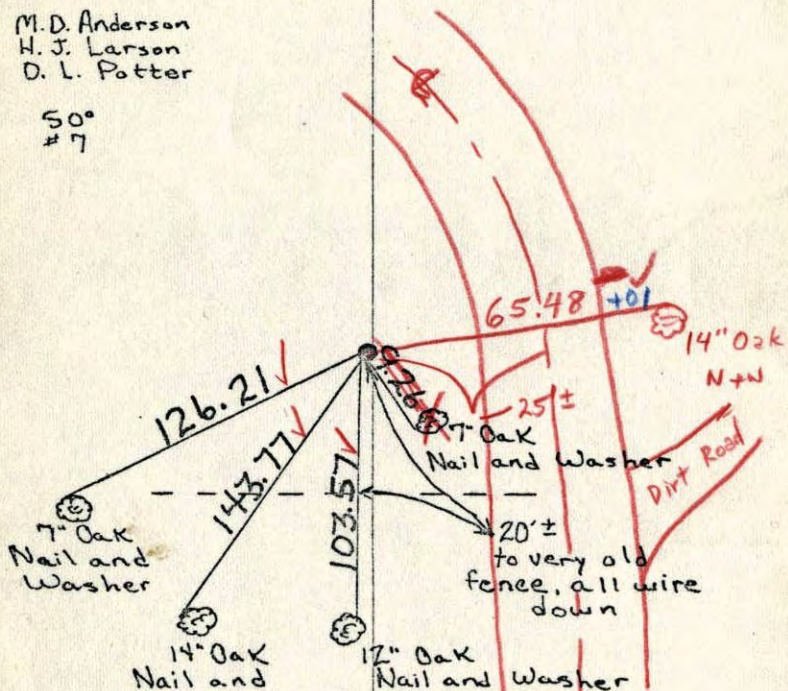
~~Set bridge spike from area resurvey~~

Cast Iron Monument in place.

March 28, 1967

M. D. Anderson  
H. J. Larson  
D. L. Potter

50°  
#7



7/21/70  
#10-74°  
D. Powell  
R. Brien  
B. Olson

GOLF COURSE

TEMPERATURE CORRECTED  
AND HORIZONTALLY  
TAPED MEASUREMENTS

ROLAND W. ANDERSON  
COUNTY SURVEYOR  
ANOKA COUNTY, MINNESOTA

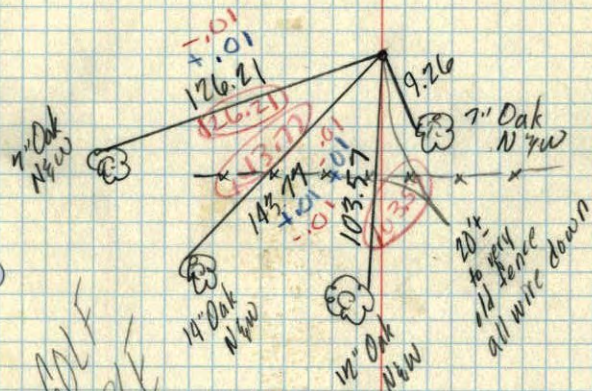
# Center of N.W. 1/4 Sec. 1-T31-R24

Set Bridge spike from area resurvey

March 28, 1967

M. D. Anderson  
H. J. Larson  
D. L. Potter

50°  
#7



GOLF COURSE