

CERTIFICATE OF LOCATION OF GOVERNMENT CORNER

County of Anoka

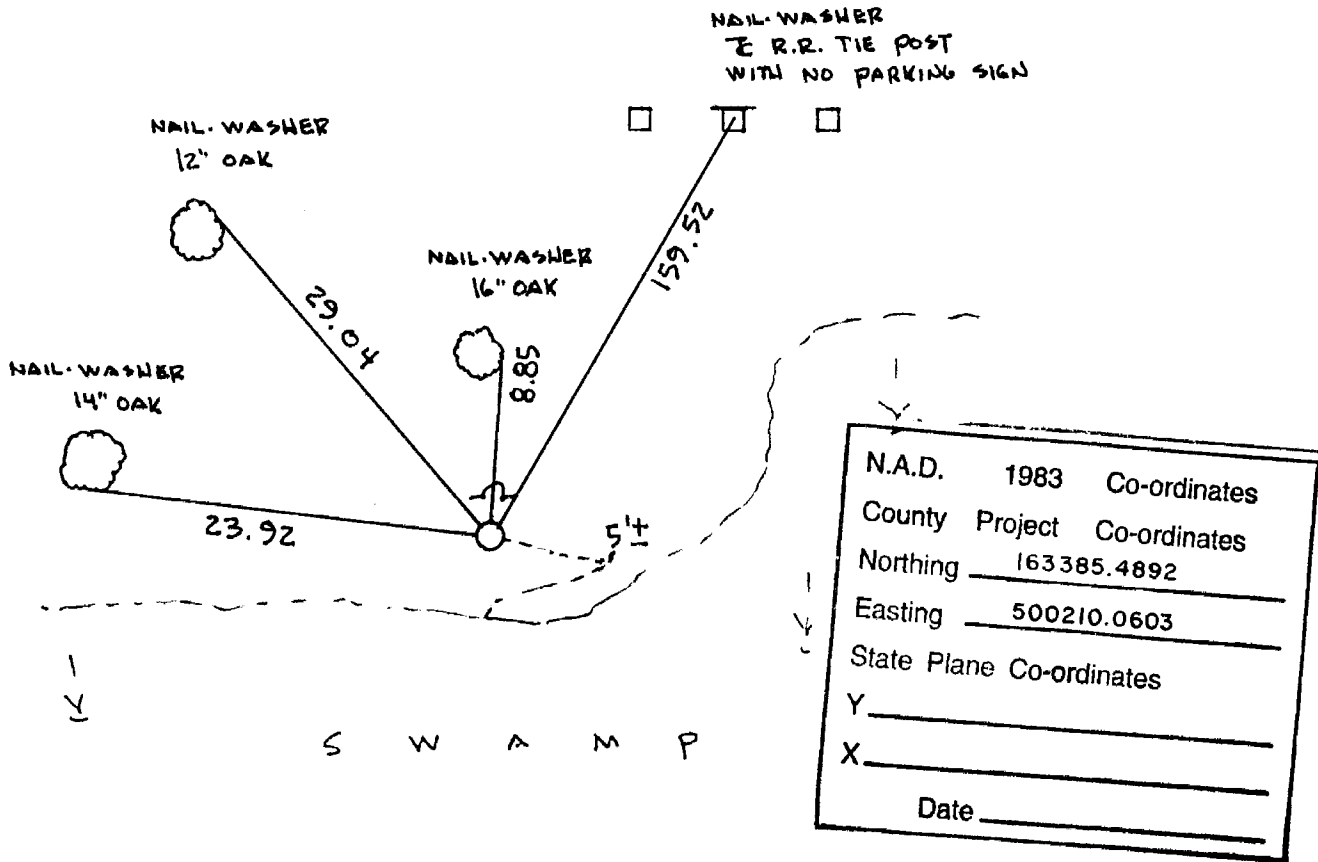
State of Minnesota

WITNESS EAST Corner of Sec. 1 Township 31 Range 24

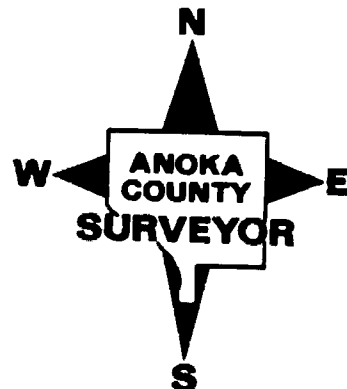
LINE OF N.E. 1/4
 I hereby certify that on the 3RD day of FEBRUARY, 1976, I found the described corner which was evidenced by AREA RESURVEY

and I further certify that to perpetuate the location of said corner, I did, at the exact location thereof, place a permanent marker consisting of CAST IRON MONUMENT SIGNÉ POST ON
NORTH SIDE

which reference or witness monuments are located in the manner following:



Revised date	Revised date	Revised date
3-3-76		
7-15-83		
12-14-83		
6-20-86		
2-4-00		

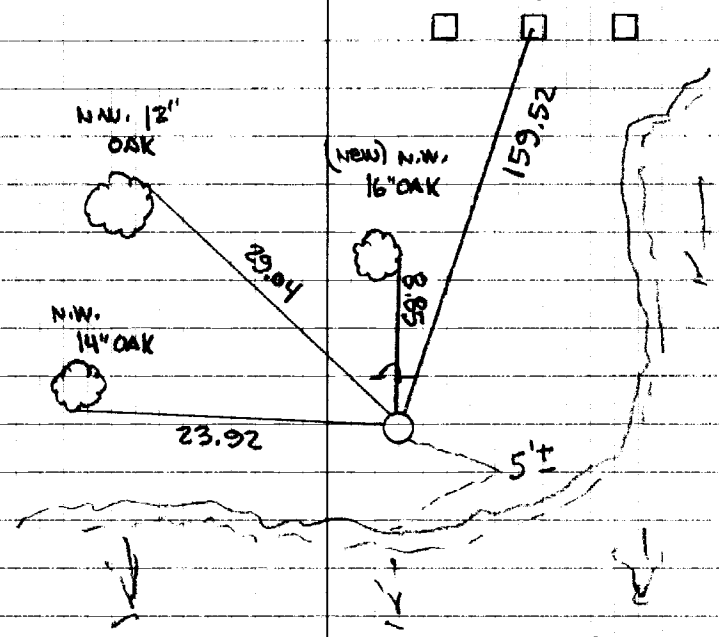


WITNESS EAST
LINE OF N.E. 1/4 SEC 1 T 31 R 24

GPS. & RETIED CAST IRON MON.
SIGN & POST ON NORTH SIDE

N.W. & R.R. TIE POST
WITH NO PARKING SIGN

NO. 446
NATIONAL PRIVACY

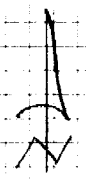
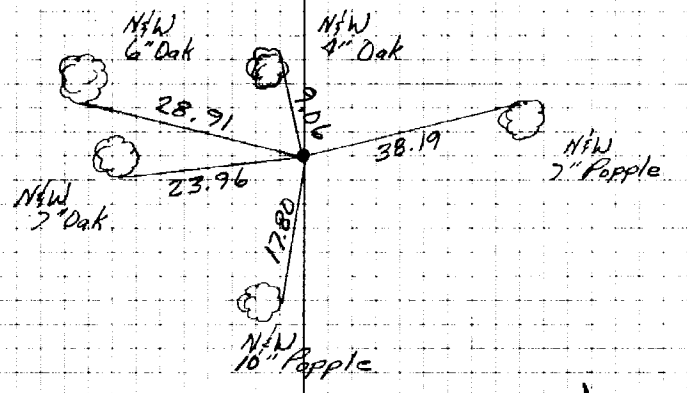


S W A M P

2.4.00
J. SIMMER
T. SCHWAB

W.C. on East Line of NE 1/4 Sec. 1, T31, R24

Set Cast Iron Monument From Area
Resurvey. Sign & Post On North Side



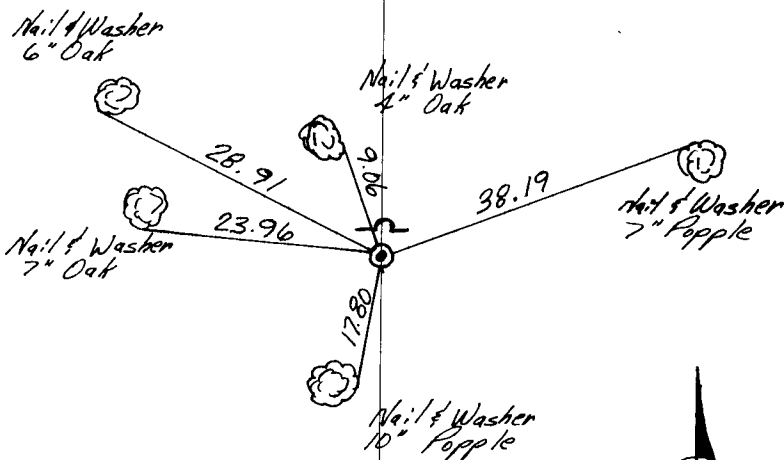
Feb. 3, 1976
R. Gutzko
J. Boettcher

Tape # 11
Temp 14°

W.C. On East Line Of NE 1/4 Sect-1-31-R24

Set Cast Iron Monument From Area Resurvey.

Sign & Post 1'± North Of Cast Iron.



Feb. 3, 1976
R. Guetzko
J. Beottchen

TEMPERATURE CORRECTED
AND HORIZONTALLY
TAPED MEASUREMENTS

ROLAND W. ANDERSON
COUNTY SURVEYOR
ANOKA COUNTY, MINNESOTA