

CERTIFICATE OF LOCATION OF GOVERNMENT CORNER

County of Anoka

State of Minnesota

Southeast Corner of Sec. 1 Township 31 Range 24

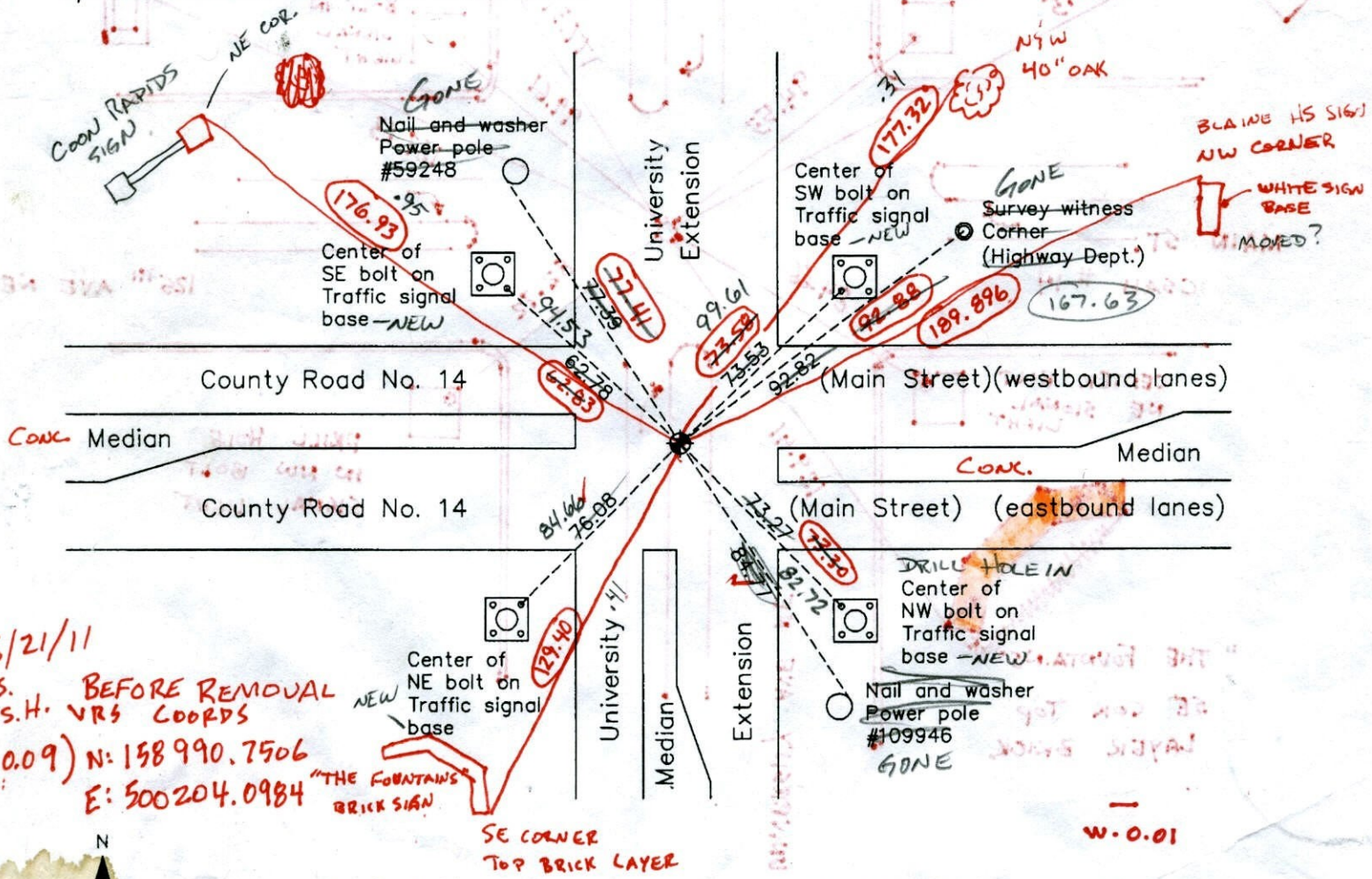
On the 29th day of August, 1960, the described corner was evidenced by a concrete monument

and to perpetuate the location of said corner, at the exact location thereof, a permanent marker was placed consisting of a cast iron monument

SEE BACK FOR NEW TIES

AND on the 23rd day of March, 2010, said permanent marker was found and the ties were updated

Updated reference ties are as shown below.



6/21/11
 J.S. BEFORE REMOVAL
 S.H. VRS COORDS
 (30 0.09) N: 158990.7506
 E: 500204.0984

N
 ANOKA COUNTY SURVEYOR
 E
 S
 Revision Date
 4/23/10

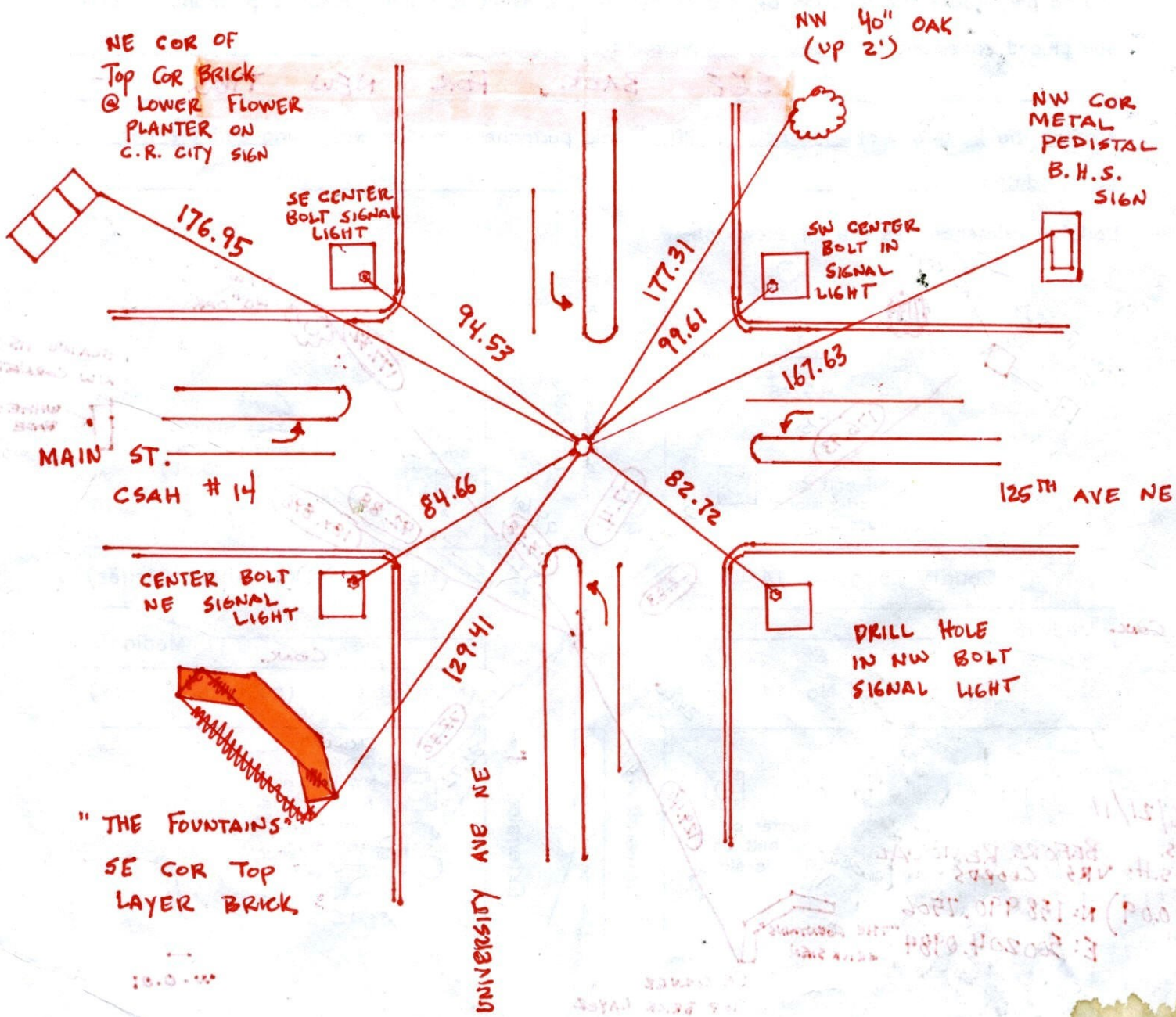
N.A.D. 1983 Coordinates
 (1996 Adjustment)

County Project Coordinates	
Northing	158990.7382
Easting	500204.1178
Date	10/12/98

I hereby certify that this United States public land survey monument record is correct and complete to the best of my knowledge and belief.

Larry D. Hoium Date 4/23/10
 Larry D. Hoium, Anoka County Surveyor
 Minnesota License Number 18165

9-11-12 JS SH
SET C.I.M +
NEW TIES



CERTIFICATE OF LOCATION OF GOVERNMENT CORNER

County of Anoka

State of Minnesota

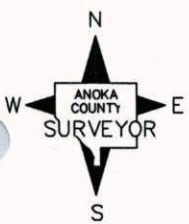
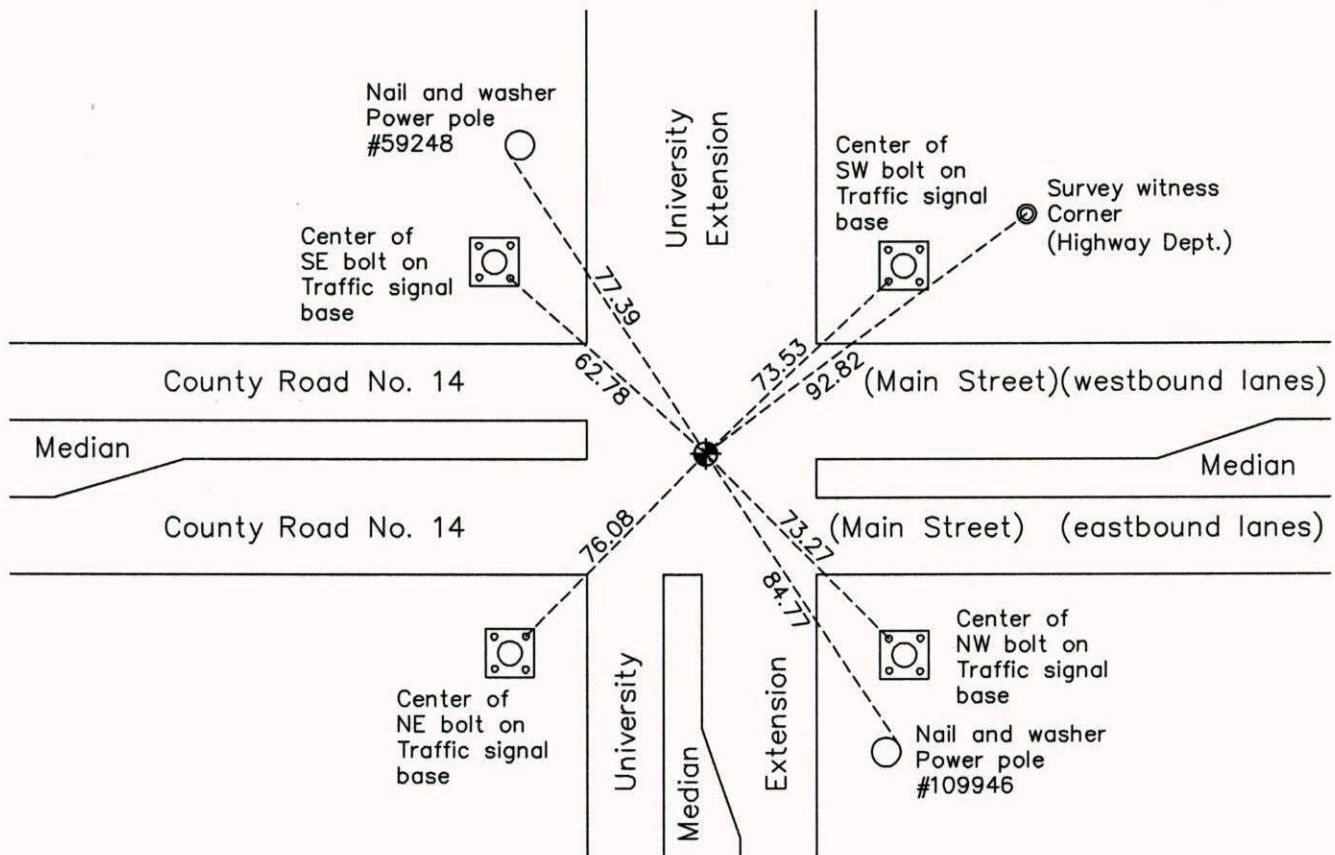
Southeast Corner of Sec. 1 Township 31 Range 24

On the 29th day of August, 1960, the described corner was evidenced by a concrete monument

and to perpetuate the location of said corner, at the exact location thereof, a permanent marker was placed consisting of a cast iron monument

AND on the 23rd day of March, 2010, said permanent marker was found and the ties were updated

Updated reference ties are as shown below.



Revision Date
4/23/10

N.A.D. 1983 Coordinates
(1996 Adjustment)

County Project Coordinates	
Northing	<u>158990.7382</u>
Easting	<u>500204.1178</u>
Date	<u>10/12/98</u>

I hereby certify that this United States public land survey monument record is correct and complete to the best of my knowledge and belief.

Larry D. Hoium Date 4/23/10

Larry D. Hoium, Anoka County Surveyor
Minnesota License Number 18165

CERTIFICATE OF LOCATION OF GOVERNMENT CORNER

County of Anoka

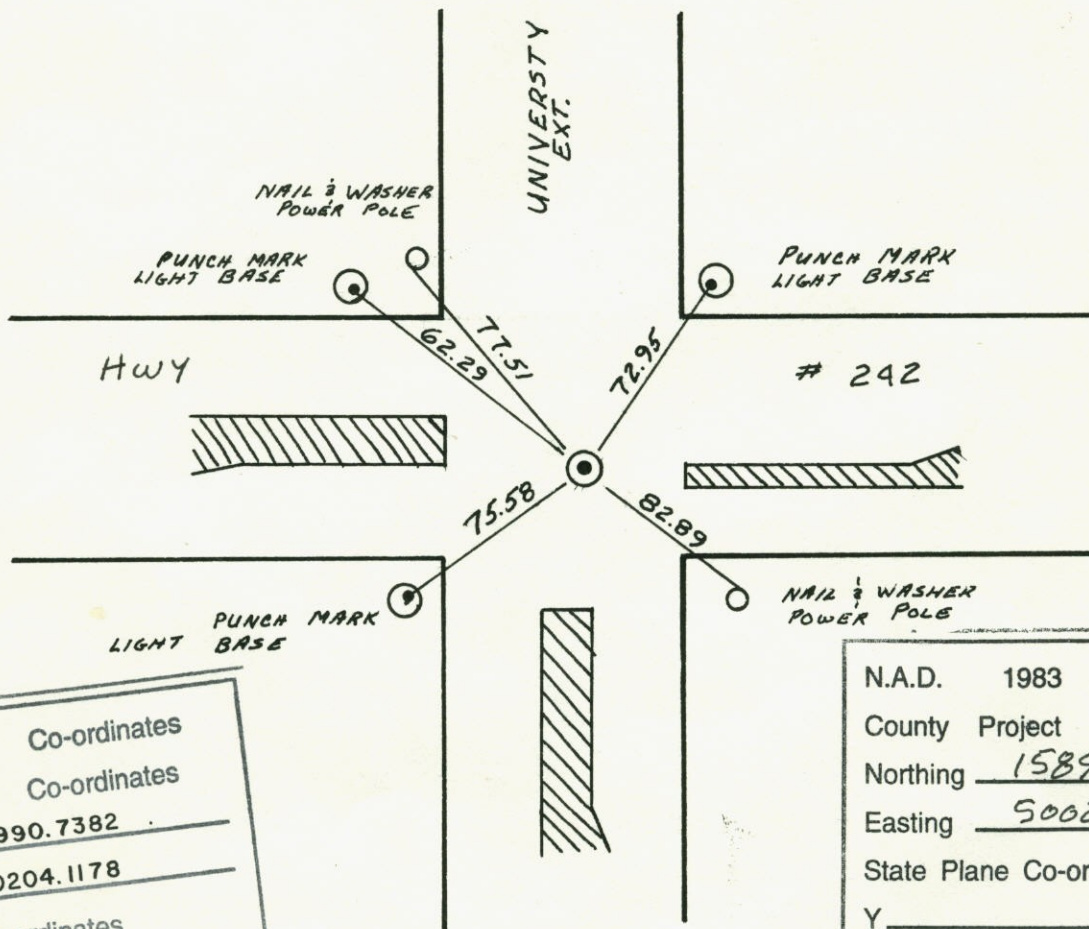
State of Minnesota

SOUTHEAST Corner of Sec. 1 Township 31 Range 24

I hereby certify that on the 29 day of AUGUST, 1960, I found the described corner which was evidenced by CONCRETE

and I further certify that to perpetuate the location of said corner, I did, at the exact location thereof, place a permanent marker consisting of CAST IRON MONUMENT

which reference or witness monuments are located in the manner following:



N.A.D.	1983	Co-ordinates
County	Project	Co-ordinates
Northing	<u>158990.7382</u>	
Easting	<u>500204.1178</u>	
State Plane Co-ordinates	Y _____	

N.A.D.	1983	Co-ordinates
County	Project	Co-ordinates
Northing	<u>158990.7382</u>	
Easting	<u>500204.1178</u>	
State Plane Co-ordinates	Y _____	
	X _____	
	Date _____	

Revised date	By
9-21-77	H.L. B.G. J.B.
6-23-80	B.S. P.R. P.H.
7-22-83	R.R. J.B.
REDRAWN 12-14-83	R. KREUSER
6-18-85	D. ROSS
8-17-90	C. Larsen
8-3-94	J.A.

Minnesota State Plane Coordinates
South Zone

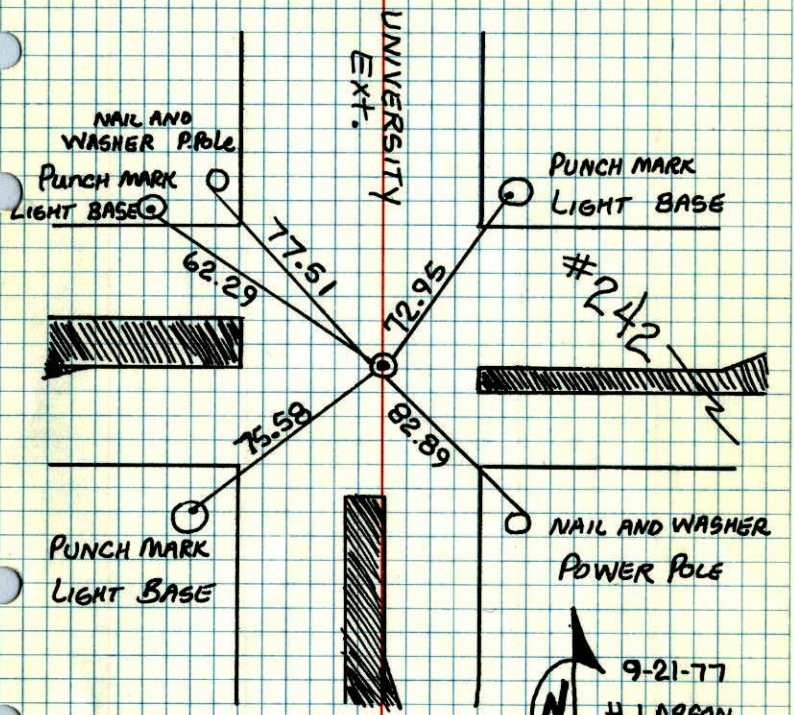
Y _____ X _____

_____, _____
County Surveyor Date

Registered Land Surveyor No. _____

S.E. COR. SEC. 1 T.31 R.24

RETIED CAST IRON MONUMENT AFTER
CONSTRUCTION. CAST IRON WAS NOT
DISTURBED. P.K. NAILS 2.00' No. AND E.



TIE CHECK
6-23-80
B. STEPHENS
P. ROSS
P. HORNBY

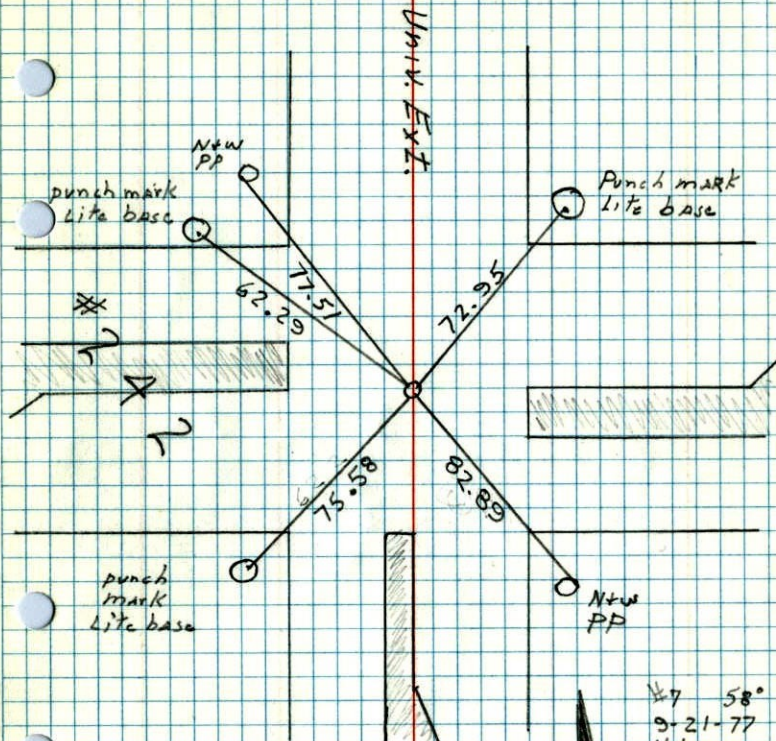
9-21-77
H. LARSON
B. GUETZKO
J. BOETCHER

TEMPERATURE CORRECTED
AND HORIZONTALLY
TAPED MEASUREMENTS

ROLAND W. ANDERSON
COUNTY SURVEYOR
ANOKA COUNTY, MINNESOTA

SE Cor Sec. 1 T31 R24

Retied cast iron monument after
construction. Cast iron was not
disturbed. PK'S 2.00' N+E.

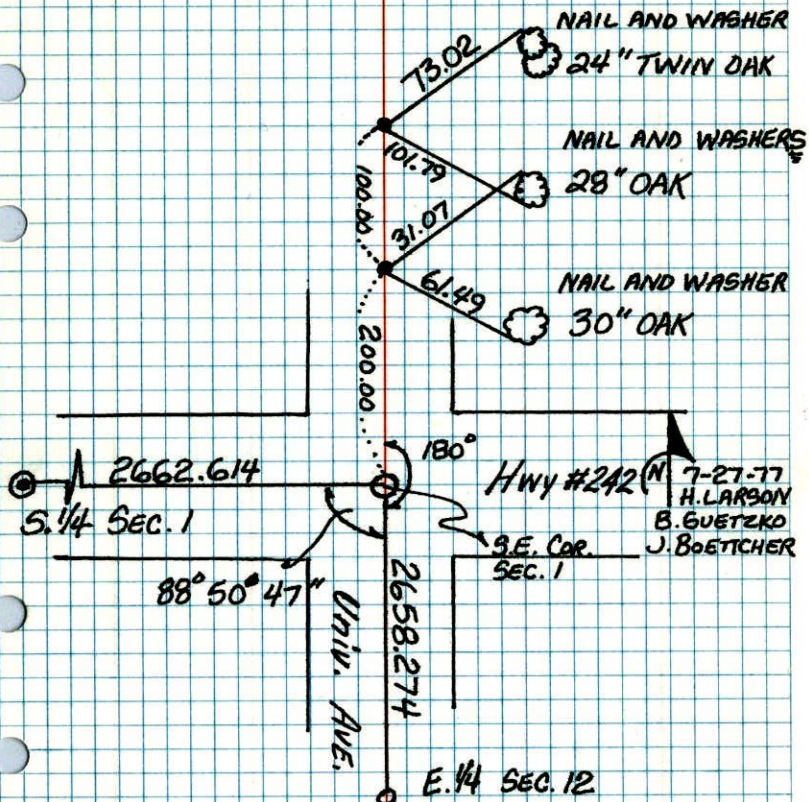


#7 58°
9-21-77
H. Larson
B. Guetzko
J. Boettcher

S.E. COR. SEC. 1 T.31 R.24

CONSTRUCTION TIES FOR CAST IRON

SET P.K. NAILS NORTH 200.00' AND 300.00'

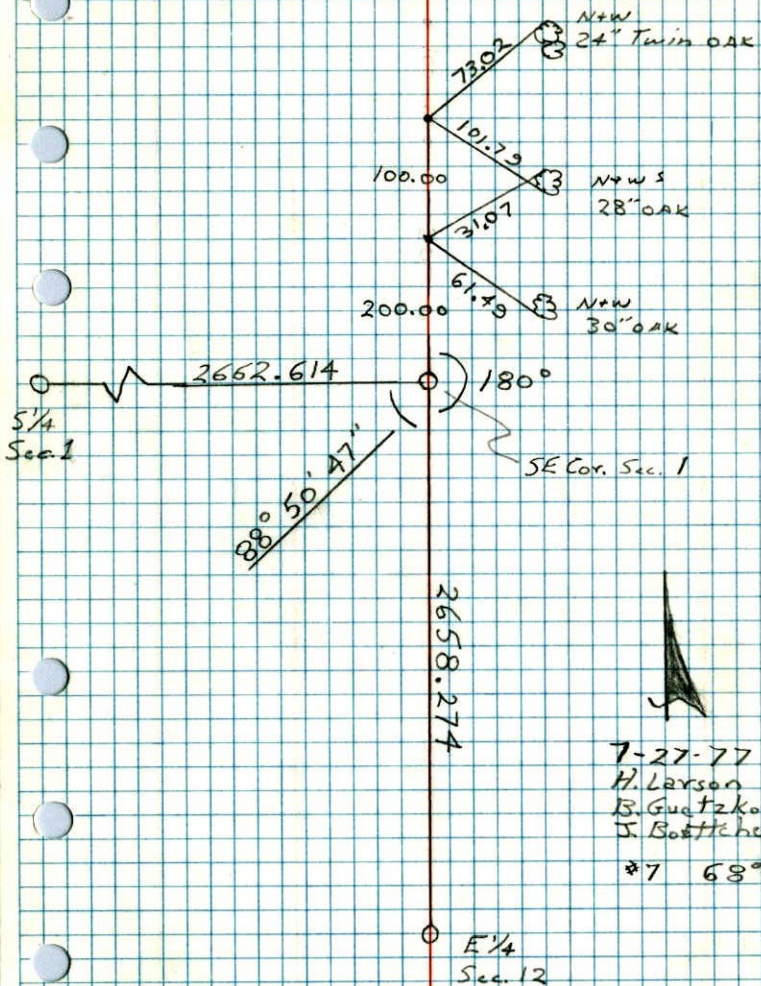


TEMPERATURE CORRECTED
AND HORIZONTALLY
TAPED MEASUREMENTS

ROLAND W. ANDERSON
COUNTY SURVEYOR
ANOKA COUNTY, MINNESOTA

SE Cor. Sec. 1 T.31 R.24

Construction Ties For Cast Iron
Set PKr North 200.00' and 300.00'



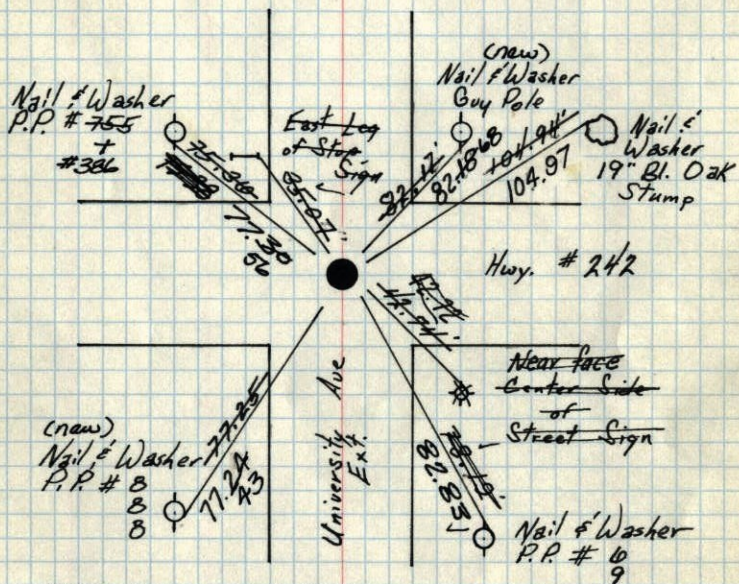
7-27-77
H. Larson
B. Guetzko
J. Boettcher
#7 68°

SE COR. Sec. 1-T31-R24

Conc. Mon down 2'
Set Cast Iron Mon Flush

Tie Check
July 21, 1970
D. Powell
R. Brien
B. Olson

Tie Check
July 11, 1966
H. Larson
D. Potter



8/29/60 TIE CHECK
7/3/74
R. FARMER
Rogers
Potter
Giddings
Carlson
Robinson

Retie 6/26/64 TIE CHECK
JUNE 17, 1977
R. SPANNERUD
S. BRIEN
J. STEPHENS

TEMPERATURE CORRECTED
AND HORIZONTALLY
TAPED MEASUREMENTS

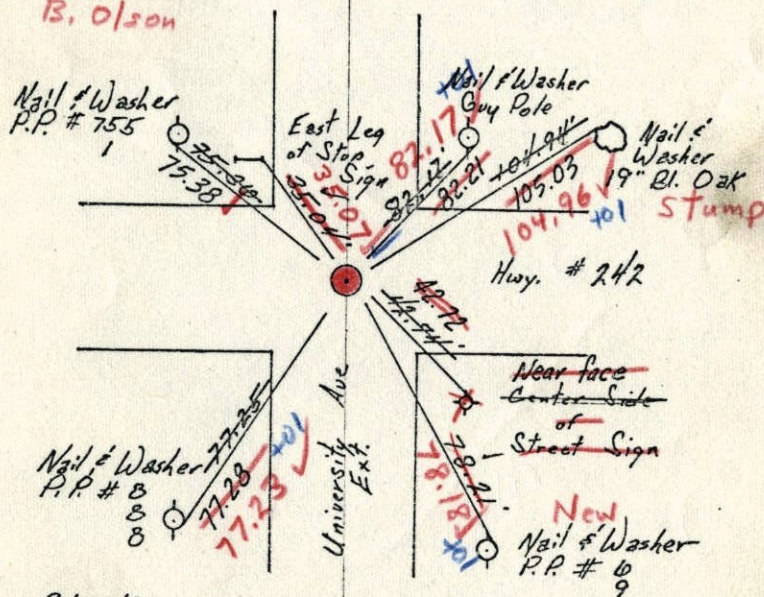
ROLAND W. ANDERSON
COUNTY SURVEYOR
ANOKA COUNTY, MINNESOTA

SE COR. Sec. 1-T31-R24

Conc. Mon down 2'
Set Cast Iron Mon Flush

7/21/70
#10-70
D. Powell
R. Brien
B. Olson

Tie Check
July 11, 1966
H. Larson
D. Potter



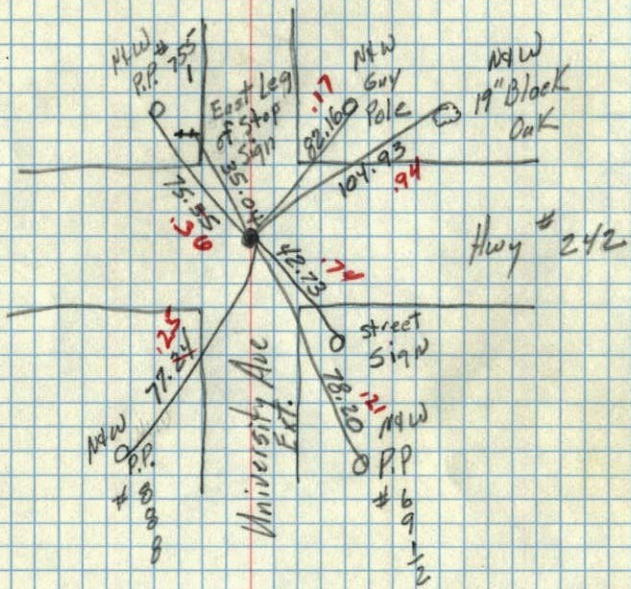
8/29/60
Rogers
Potter
Giddings
Carlson
Robinson

Retie 6/26/64
J. Oliver
R. Carlson
N. Livgard
J. Dunlop

TEMPERATURE CORRECTED
AND HORIZONTALLY
TAPED MEASUREMENTS

ROLAND W. ANDERSON
COUNTY SURVEYOR
ANOKA COUNTY, MINNESOTA

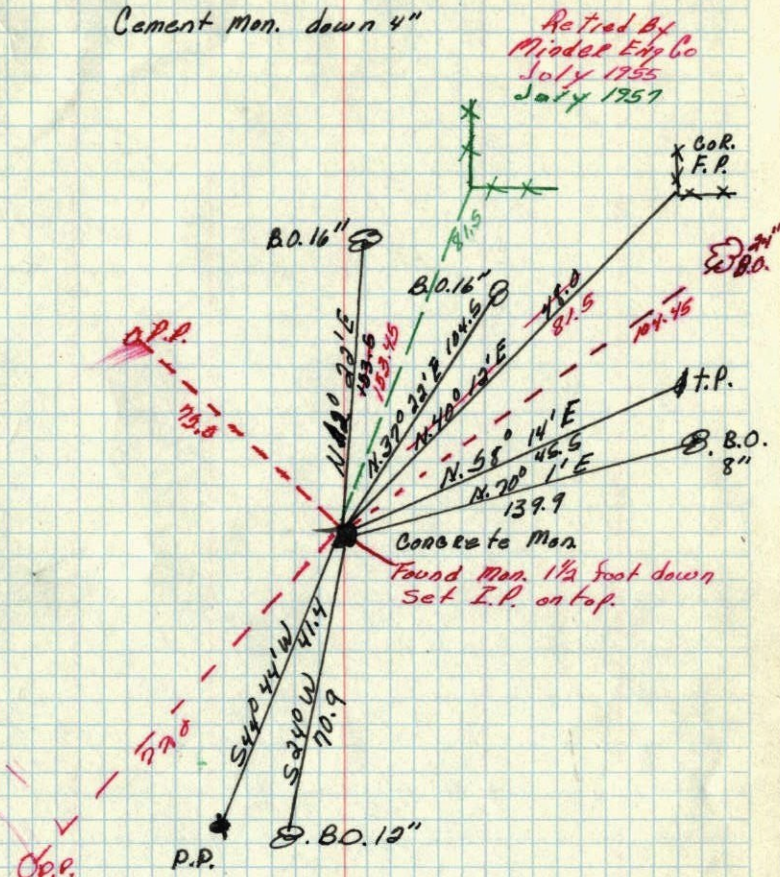
SE Cor. Sec. 1 T31R24
 Con Mon down 2' Placed
 Cast Iron Mon flush



19/8/60

TC 85°
 temp.
 8/29/60
 Bill Rogers
 Denny Potter
 Dick Giddings
 Rundy Carlson
 Ralph Robinson

SE corner of Sec. 1. T. 31N R. 24W.
 Cement Mon. down 4"



Retired By
 Middel Eng Co
 July 1955
 July 1957

Concrete Mon
 Found Mon. 1 1/2 foot down
 Set I.P. on top.

June 28, 1943
 HARVEY A. CARTWRIGHT



John E. Hopkins

NORTH STAR CONCRETE CO.

CONCRETE PIPE

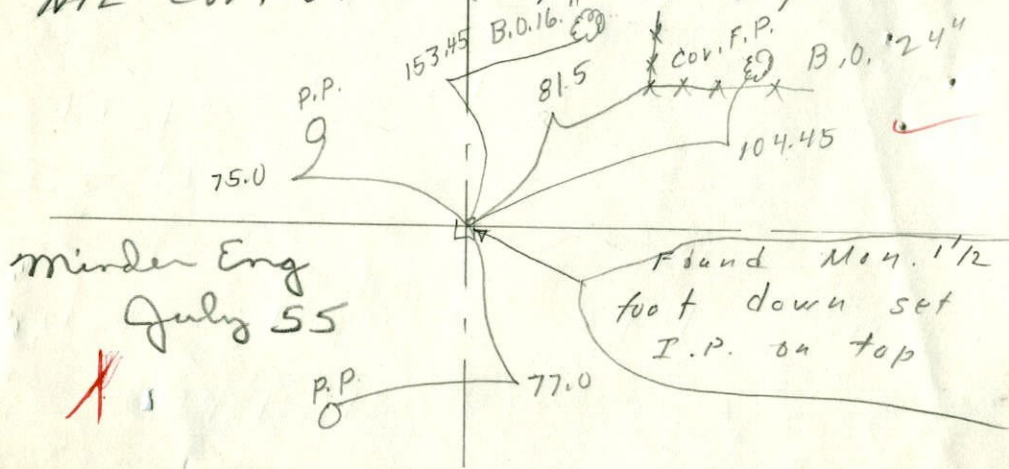
PHONE MINNEAPOLIS GR 7231
ST. PAUL ZE. 2127

PRECAST MANHOLES



SE

Nr E Cor. of Sec 17-31-24



SE Sec 1 7-31-24

