

CERTIFICATE OF LOCATION OF GOVERNMENT CORNER

County of Anoka

State of Minnesota

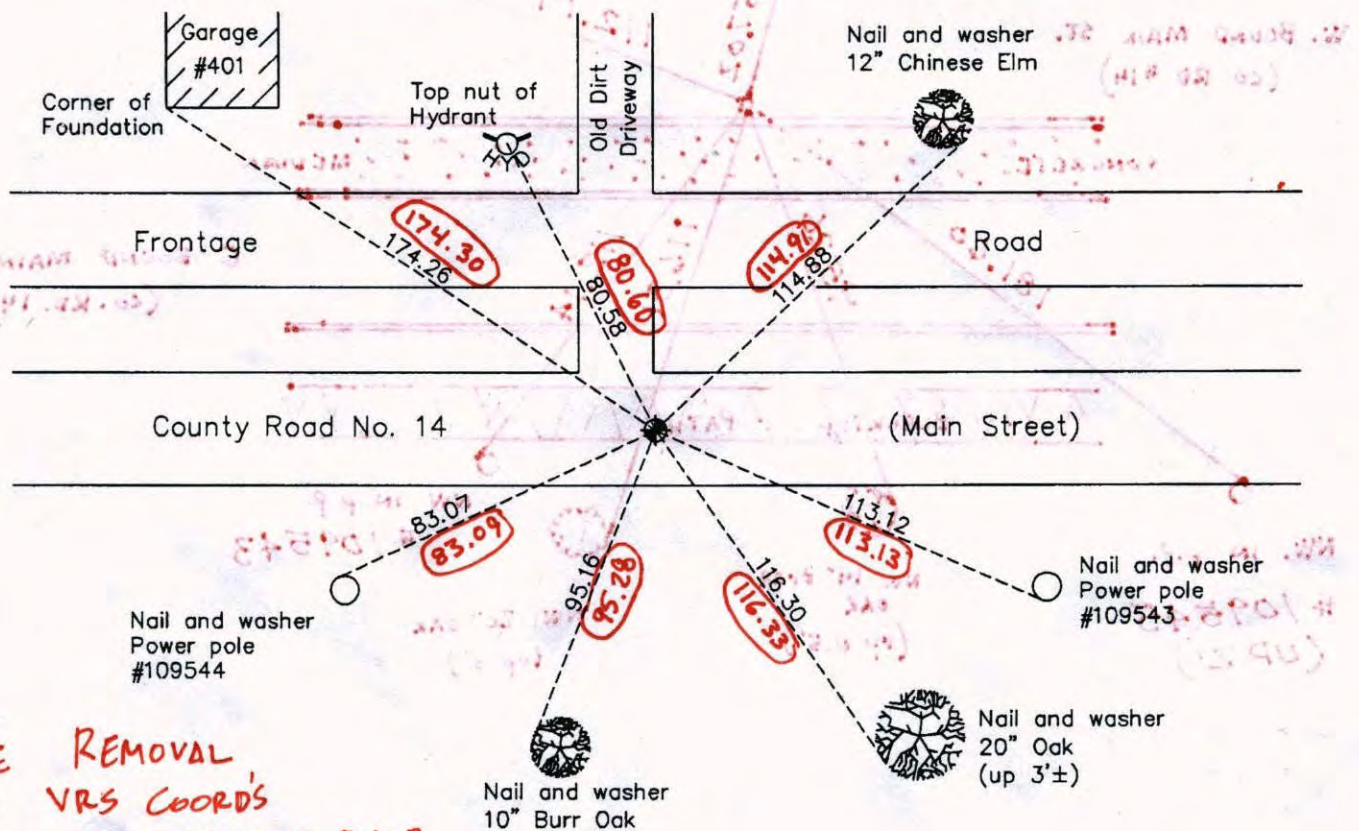
South 1/4 Corner of Sec. 1 Township 31 Range 24

On the 29th day of August, 1960, the described corner was evidenced by a concrete monument

and to perpetuate the location of said corner, at the exact location thereof, a permanent marker was placed consisting of a cast iron monument

AND on the 30th day of March, 2010, said permanent marker was found and the ties were updated.

Updated reference ties are as shown below.



BEFORE REMOVAL
6-21-11 VRS COORDS
(3D @ 0.08)
N: 158963.8428
E: 497541.6509

W E
 ANOKA COUNTY SURVEYOR
 S
 Revision Date
4/23/10

N.A.D. 1983 Coordinates
(1996 Adjustment)

County Project Coordinates	
Northing	158963.8720
Easting	497541.6709
Date	8/02/01

I hereby certify that this United States public land survey monument record is correct and complete to the best of my knowledge and belief.

Date 4/23/10
 Larry D. Hoium, Anoka County Surveyor
 Minnesota License Number 18165

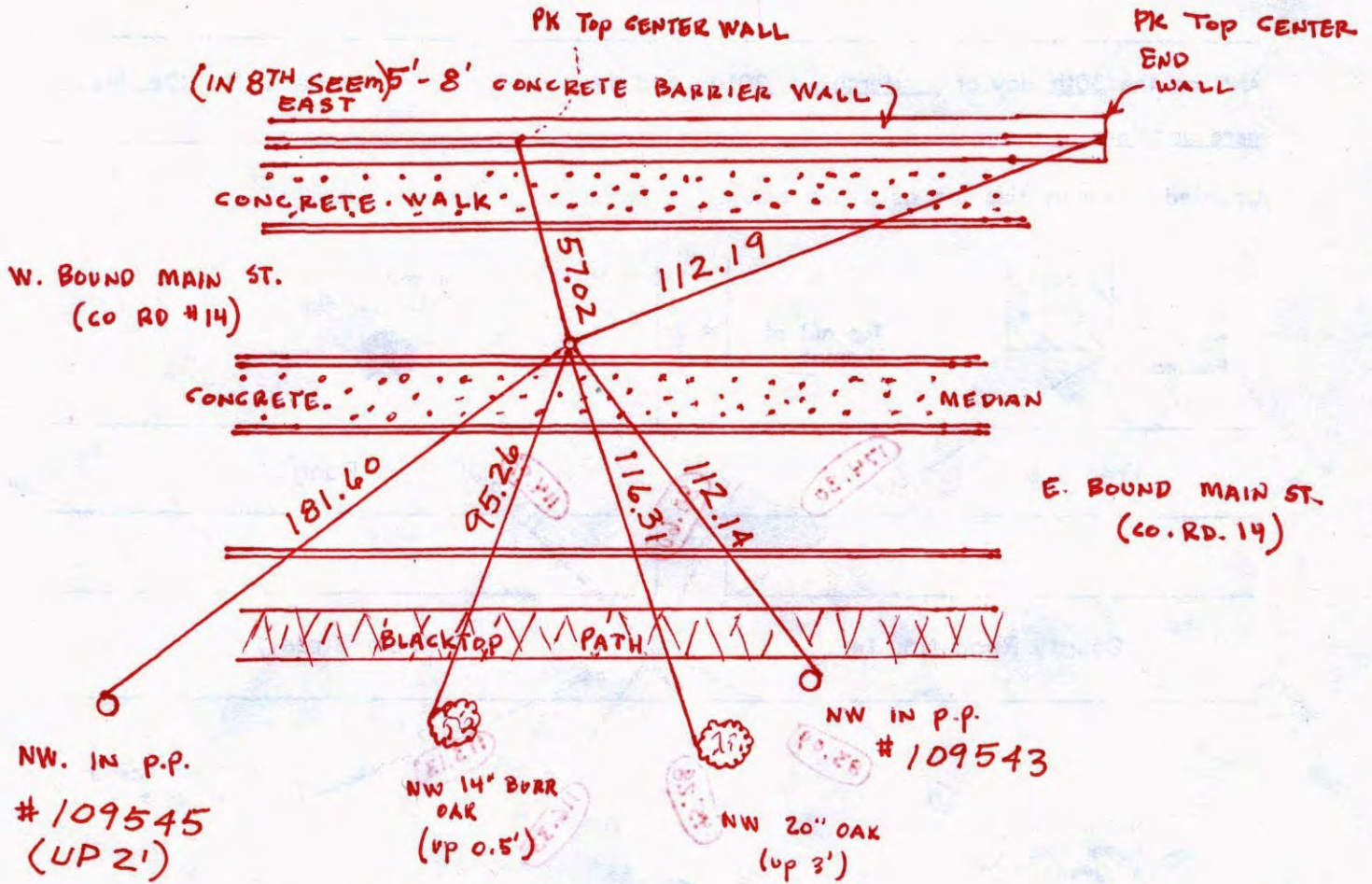


8-22-12

J.S. S.H.

SET 1/2" I.P. W/ ANOKA COUNTY

CAP 0.2' FROM FACE OF CURB



REMOVE
 2-11-12
 30-0-08
 E. HAZELWOOD

CERTIFICATE OF LOCATION OF GOVERNMENT CORNER

County of Anoka

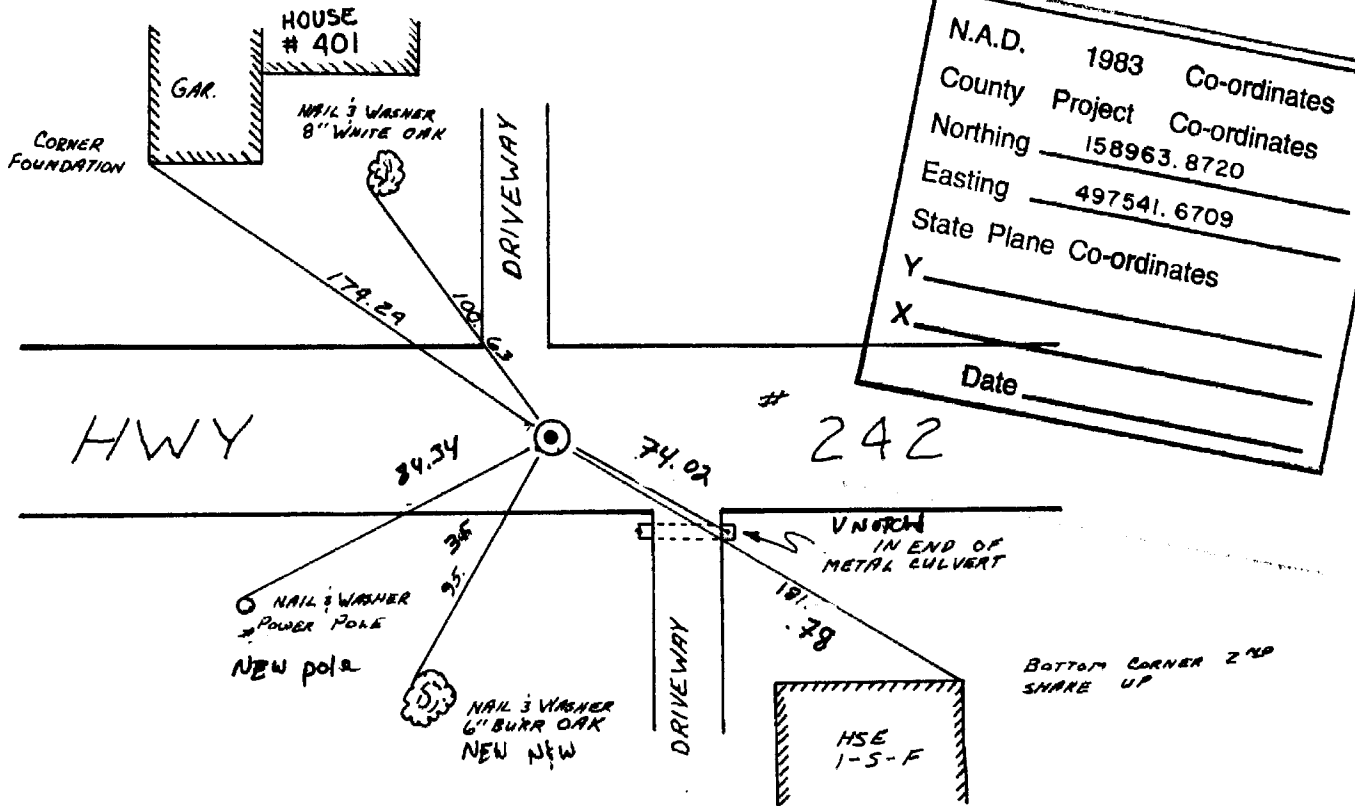
State of Minnesota

SOUTH ONE QUARTER Corner of Sec. 1 Township 31 Range 24

I hereby certify that on the 29 day of AUGUST, 1960, I found the described corner which was evidenced by CONCRETE

and I further certify that to perpetuate the location of said corner, I did, at the exact location thereof, place a permanent marker consisting of CAST IRON MONUMENT

which reference or witness monuments are located in the manner following:



N.A.D.	1983	Co-ordinates
County	Project	Co-ordinates
Northing	158963.8720	
Easting	497541.6709	
State Plane Co-ordinates		
Y	_____	
X	_____	
Date _____		

Revised date
7-21-70
7-5-74
6-17-77
6-23-80
REDRAWN 12-14-83
6-24-86
6-24-91

By	CHECKED
D.P. R.B. B.O.	8-8-94
R. FARMER	
R.S. S.B. J.S.	
B.S. P.R. P.H.	
R. KREUSER	
D. ROSS	
B. KLEMZ	

Minnesota State Plane Coordinates
South Zone
Y _____ X _____

County Surveyor
Registered Land Surveyor No. _____
Date _____

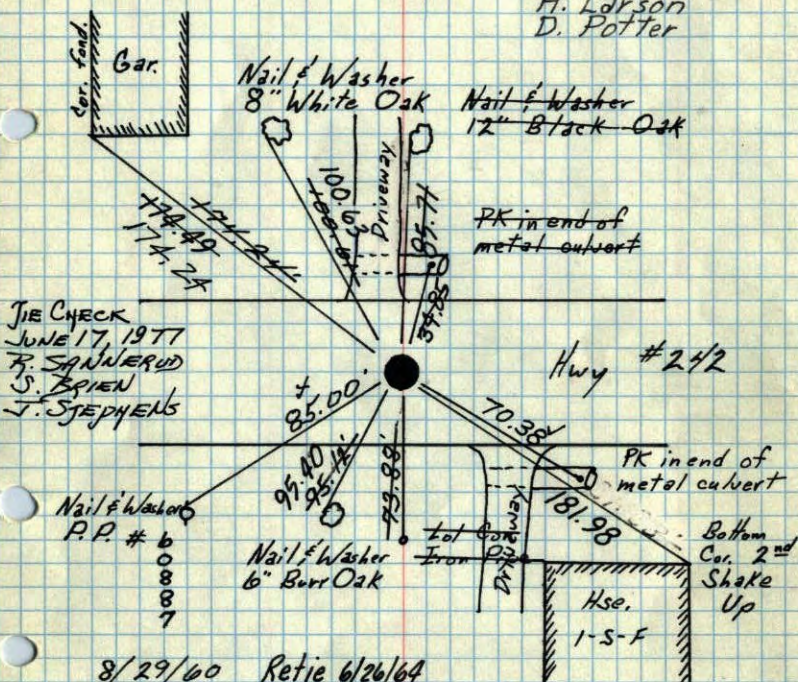
S 1/4 Cor. Sec 1-T31-R24

Conc. Mon broken off
down 2'

Cast Iron Mon.
Flush

TIE CHECK
6-23-80
B. STEPHENS
P. ROSS, P. HORNBY

Tie Check
July 11, 1966
H. Larson
D. Potter



TIE CHECK
JUNE 17, 1977
R. BRIEN
S. Brien
J. STEPHENS

8/29/60 Retie 6/26/64

Rogers	J. Oliver
Giddings	R. Carlson
Potter	N. Livgard
Robinson	J. Dunlop

TEMPERATURE CORRECTED
AND HORIZONTALLY
TAPED MEASUREMENTS

Tie Check
July 21, 1970
D. Powell
R. Brien
B. Olson

Tie Check
7/5/74
R. FARMER

ROLAND W. ANDERSON
COUNTY SURVEYOR
ANOKA COUNTY, MINNESOTA

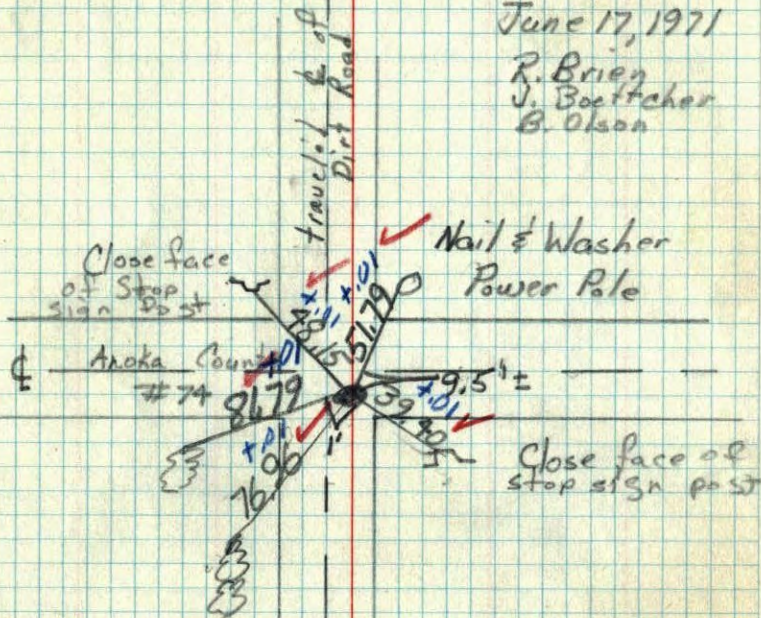
S 1
A 1/4 Cor Sec 1/2-T33-R24

Moved Cast Iron Monument
2.93' East

#10 - 90°

June 17, 1971

R. Brien
J. Boettcher
B. Olson



X

22

S¹/₄ Cor. Sec 1 - T31 - R24

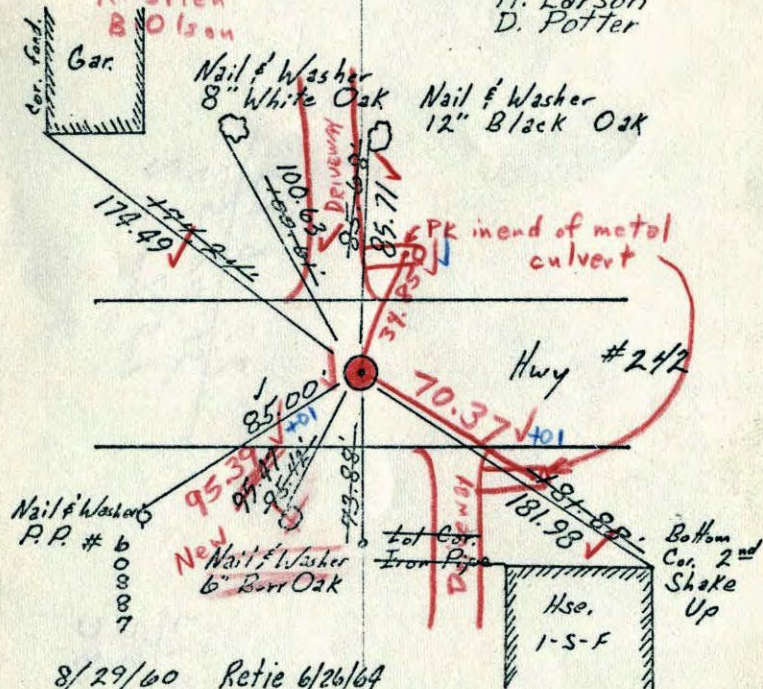
Conc. Mon broken off
down 2'

Cast Iron Mon.
flush

7/21/70
#10-72°

D. Powell
R. Brien
B. Olson

Tie Check
July 11, 1966
H. Larson
D. Potter



8/29/60 Retie 6/26/64

Rogers
Giddings
Potter
Robinson

J. Oliver
R. Carlson
N. Livgard
J. Dunlop

Temp. 75°

TEMPERATURE CORRECTED
AND HORIZONTALLY
TAPED MEASUREMENTS

ROLAND W. ANDERSON
COUNTY SURVEYOR
ANOKA COUNTY, MINNESOTA

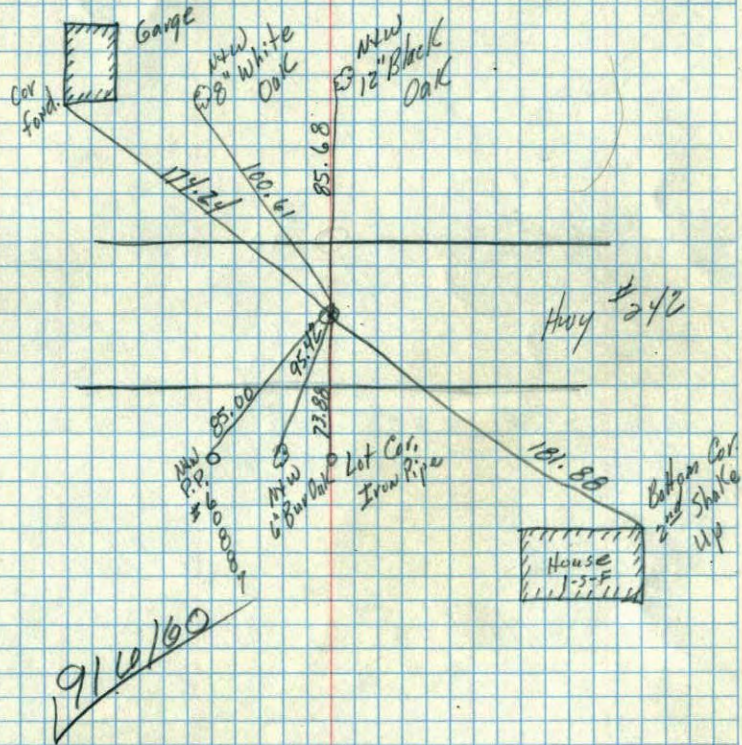
S¹/₄ Corn. Sec. 1, T. 31, R. 24

Coon Rapids

Aug. 29/060
Temp. 75°

Conc. Mon broken off down 2'
Placed Cast Iron Mon. flush

R. Giddings
B. Rogers
D. Potter
R. Robinson





John E. Hopkins

NORTH STAR CONCRETE CO.

CONCRETE PIPE

PHONE MINNEAPOLIS GR 7231
ST. PAUL ZE. 2127

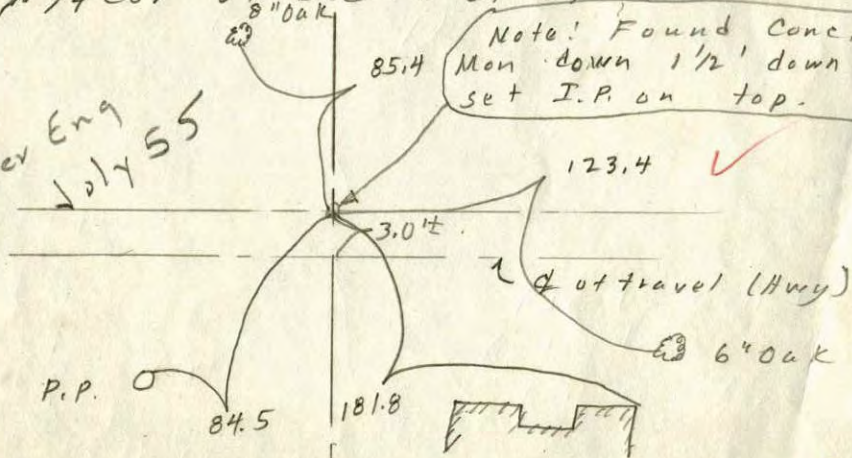
PRECAST MANHOLES



S 1/4 Cor of Sec 1 of T-31-24

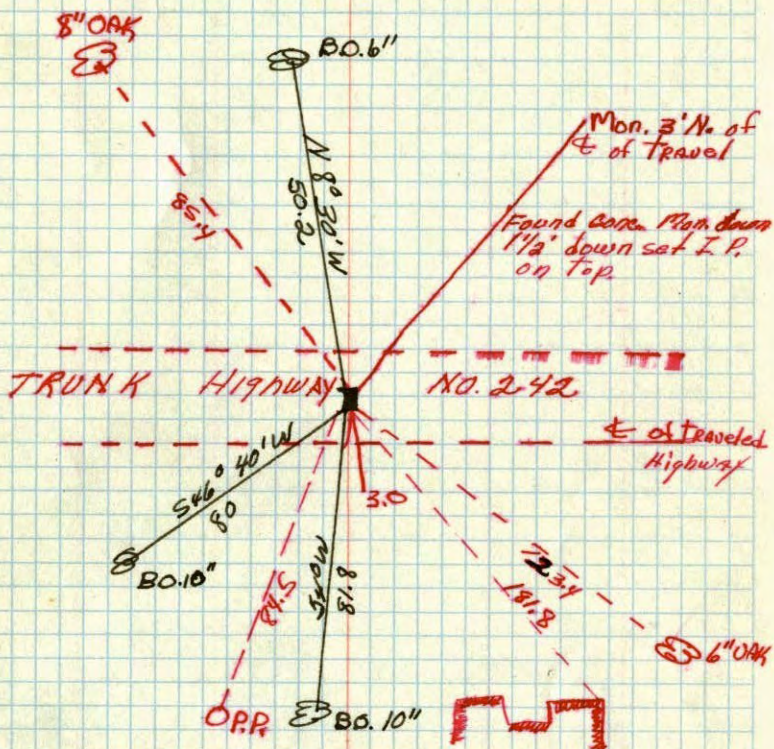
Note! Found Conc. Man down 1 1/2' down set I.P. on top.

Minder Eng July 55

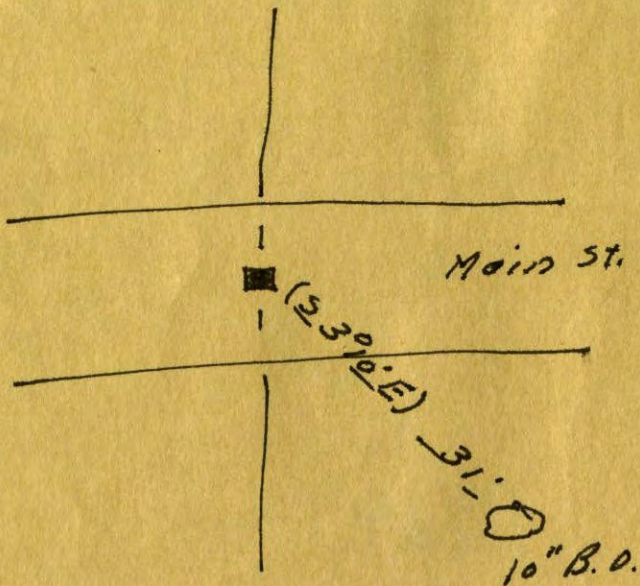


S 1/4 Cor. Sec. 1, T 31, R. 24
Concrete Man. down 4"

Retired By
Minder Eng. Co.
July 1955



S 1/4 sec. 1 T 31 R 24



Nov. 25, 1944
H.A. Cartwright