

# CERTIFICATE OF LOCATION OF GOVERNMENT CORNER

County of Anoka

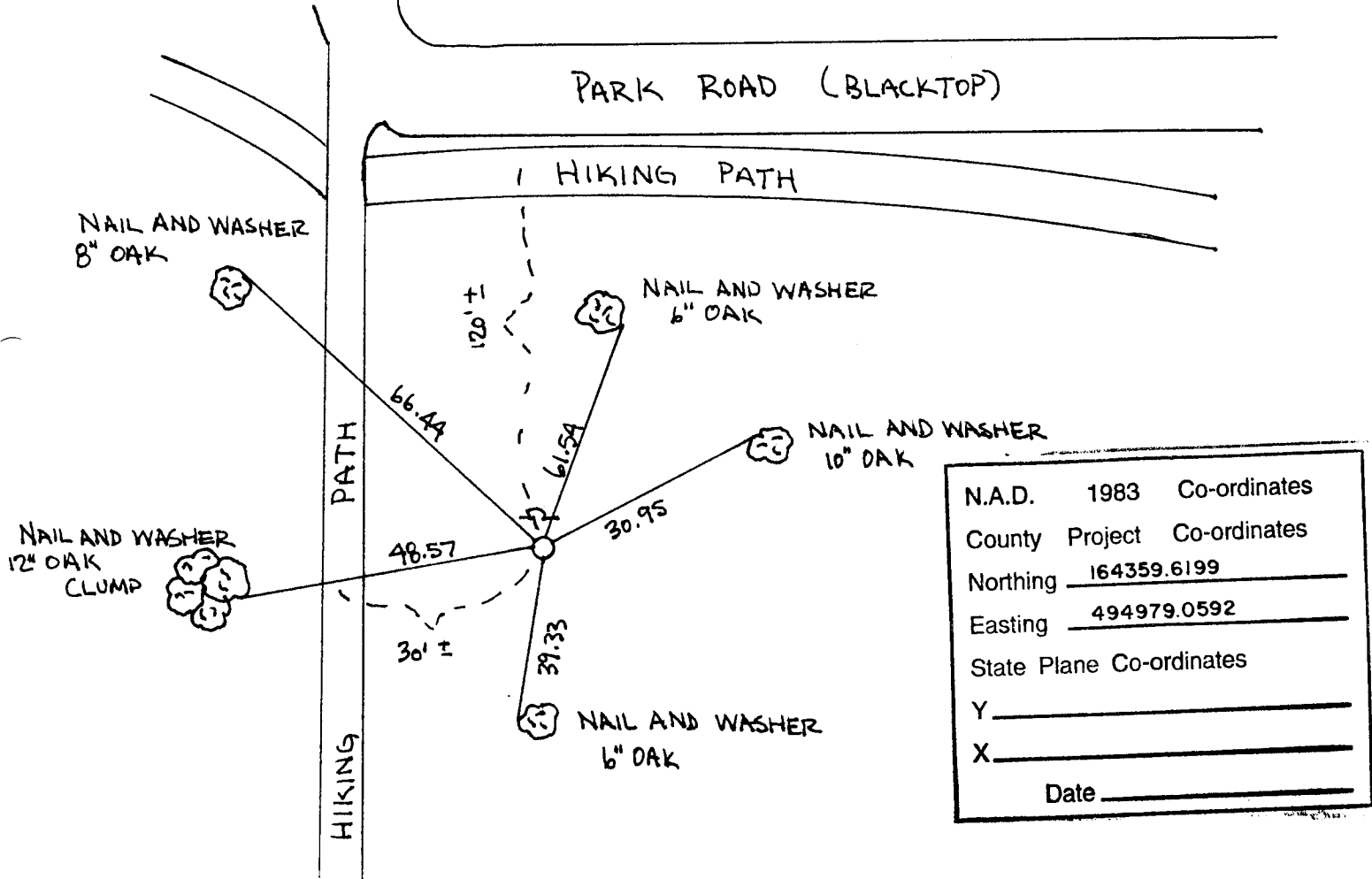
State of Minnesota

NORTHEAST Corner of Sec. 2 Township 31 Range 24

I hereby certify that on the \_\_\_\_\_ day of \_\_\_\_\_, 19 44, I found the described corner which was evidenced by CARTWRIGHT TIES RETIED AFTER CONSTRUCTION IN 1988

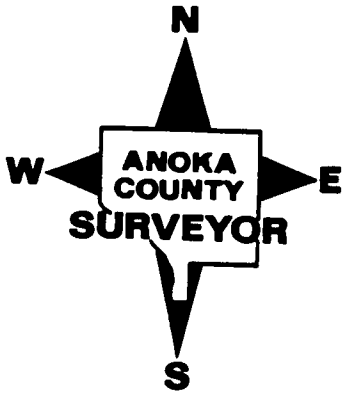
and I further certify that to perpetuate the location of said corner, I did, at the exact location thereof, place a permanent marker consisting of CAST IRON MONUMENT WITH SIGN AND POST ON NORTH SIDE

which reference or witness monuments are located in the manner following:

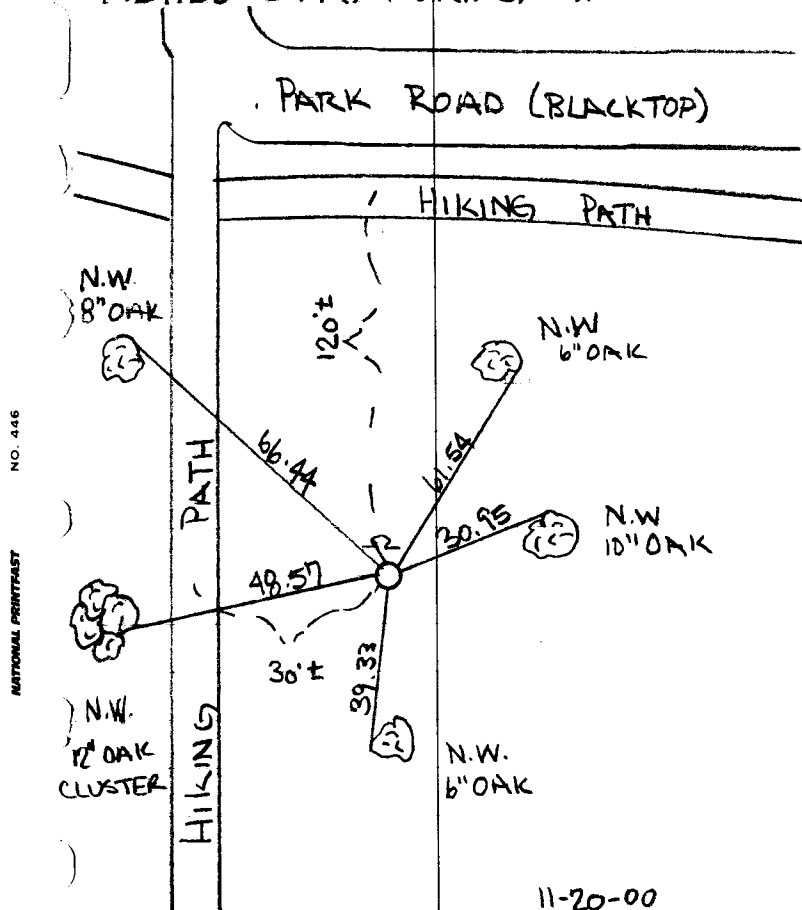


N.A.D.	1983	Co-ordinates
County	Project	Co-ordinates
Northing	<u>164359.6199</u>	
Easting	<u>494979.0592</u>	
State Plane Co-ordinates		
Y	_____	
X	_____	
Date _____		

Revised date	Revised date	Revised date
<u>11-8-83</u>		
<u>6-20-86</u>		
<u>10-28-88</u>		
<u>8-25-94</u>		
<u>11-20-00</u>		

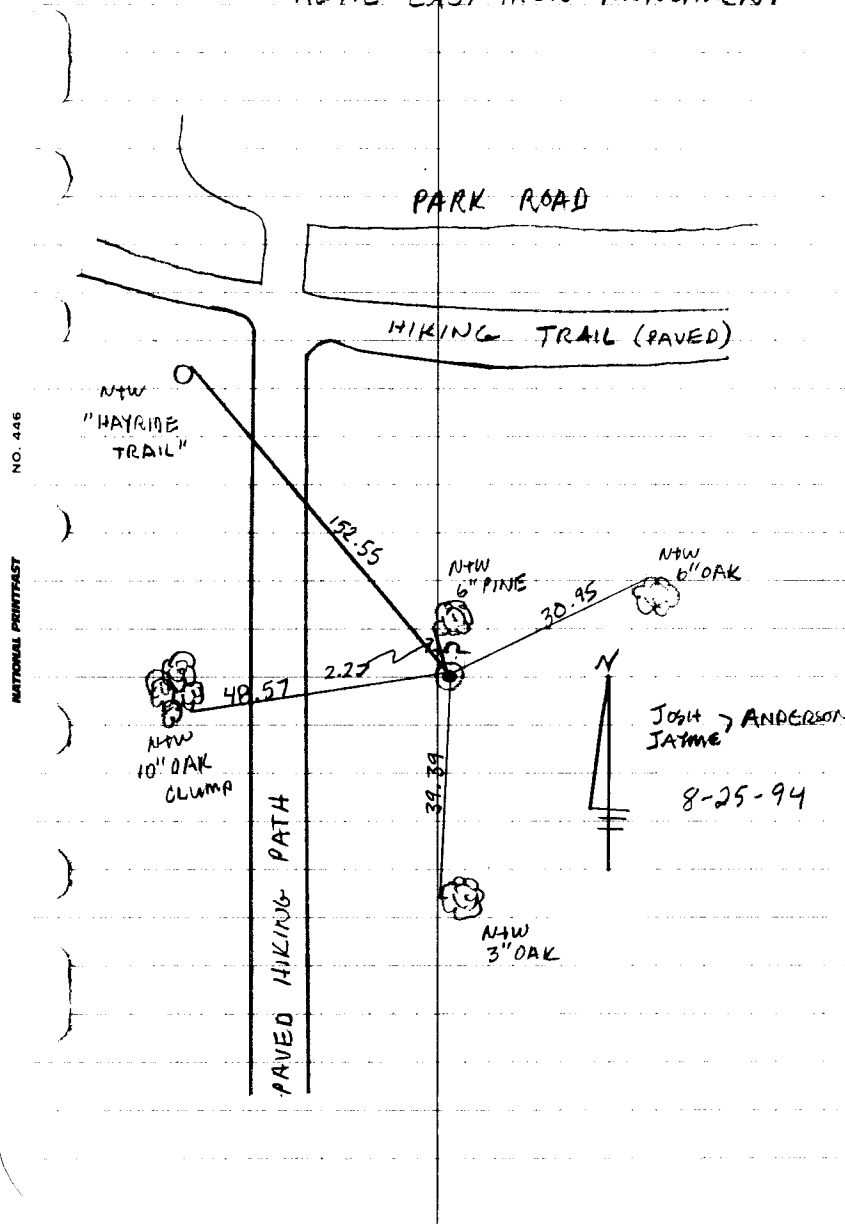


NORTHEAST COR. SEC. 2, T. 31, R. 24  
RETIED C.I.M. DURING G.P.S



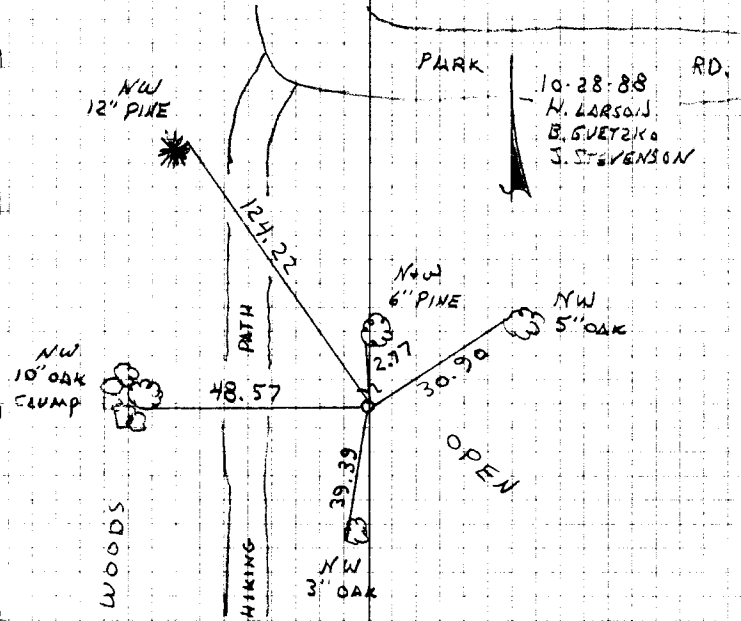
11-20-00  
J. SIMMER  
T. SCHWAB  
B. KLEME

NORTHEAST SEC. 2 TW. 31 R. 24  
RETIED CAST IRON MONUMENT



N.E. CORNER SECTION 2 T31 R24

REPLACED CAST IRON AFTER CONSTRUCTION  
FROM TRANSIT TIES RETIED SIGN AND  
POST ON NORTH SIDE



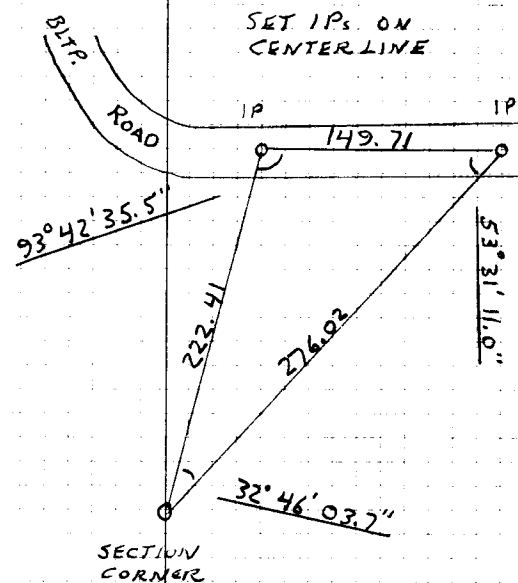
NO. 448

TELEPHONE

CONSTRUCTION TIES

NE COR. SECTION 2 T31 R24

SET 1/2" IPS AS CONSTRUCTION  
TIES FOR SECTION CORNER  
PULLED CAST IRON LEFT 1/2" IP  
IN PLACE.



NO. 448

TELEPHONE

N. LARSON  
B. GUETZKO  
H. GRAMAS  
7-20-87

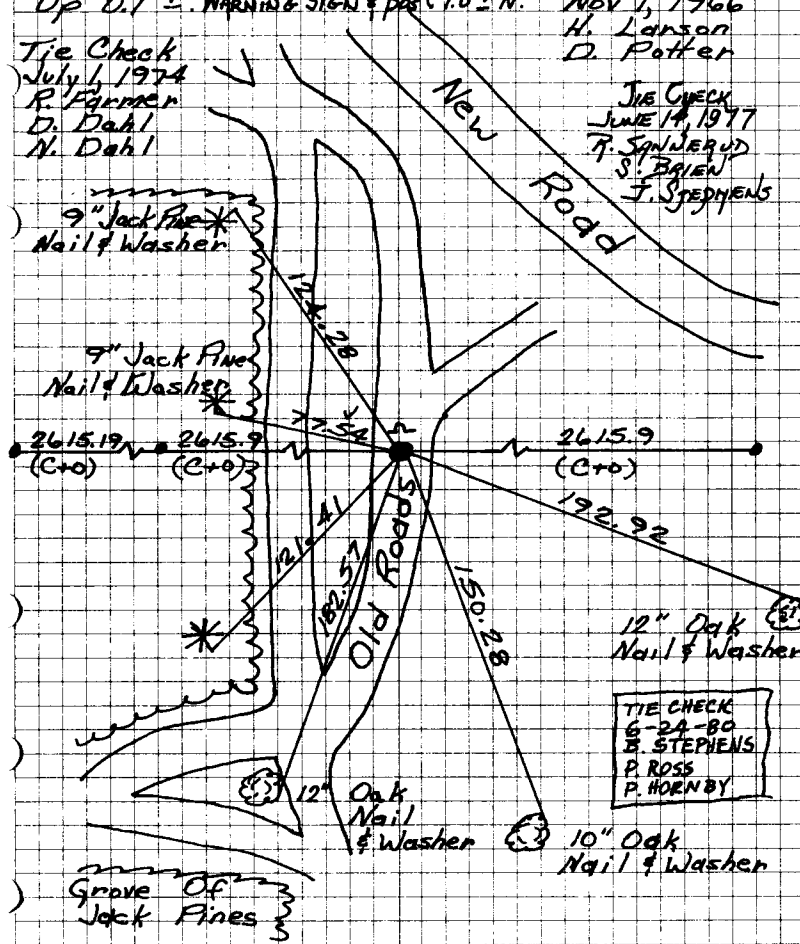
# NE Cor. Sec. 2-T31-R24

Found 3/4" Pinched Iron Pipe From Cartwright's 1944 Ties. Bearings Are Cartwright's - Decl. is 8°50'. Replaced With Cast Iron Monument

Up 0.1' ±. Warning sign & post 1.0' N. Nov. 1, 1966  
H. Larson  
D. Potter

Tie Check  
July 6, 1974  
R. Farmer  
D. Dahl  
N. Dahl

TIE CHECK  
JUNE 14, 1977  
T. SPILNERUD  
S. BRIEN  
J. STEPHENS



12" Oak Nail & Washer

TIE CHECK  
6-24-80  
B. STEPHENS  
P. ROSS  
P. HOENBY

12" Oak Nail & Washer

10" Oak Nail & Washer

Grove Of Jack Pines

ROLAND W. ANDERSON COUNTY SURVEYOR ANOKA COUNTY, MINNESOTA  
TEMPERATURE CORRECTED AND HORIZONTALLY TAPED MEASUREMENTS

# NE Cor. Sec. 2-T31-R24

Found 3/4" Pinched Iron Pipe from Cartwright's 1944 Ties. Bearings are Cartwright's - Decl. is 8°-30'. Replaced with Cast Iron Monument

up 0.1' ±. Nov. 1, 1966  
H. Larson  
D. Potter

Tie Check  
July 21, 1970  
D. Powell  
R. Brien  
B. Olson

9" Jack Pine Nail & Washer

9" Jack Pine Nail & Washer

2615.19 (C+0) 2615.9 (C+0)

77.57

(C+0) 2615.9

196.92

9" Jack Pine Nail & Washer

12" Oak Nail & Washer

10" Oak Nail & Washer

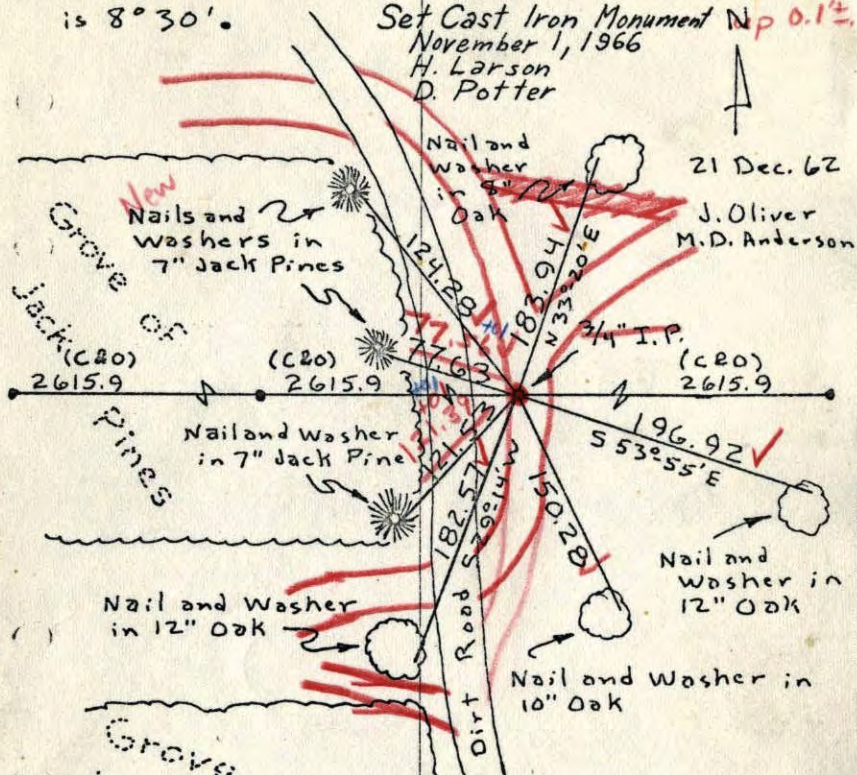
Grove of Jack Pines

TEMPERATURE CORRECTED AND HORIZONTALLY TAPED MEASUREMENTS  
ROLAND W. ANDERSON COUNTY SURVEYOR ANOKA COUNTY, MINNESOTA

NE Cor. Sec. 2, T31, R24

Found 3/4" Pinched Iron Pipe From Cartwrights  
1944 Ties. Bearings are Cartwrights - Decl.  
is 8° 30'.

Set Cast Iron Monument N  
November 1, 1966  
H. Larson  
D. Potter



21 Dec. 62  
J. Oliver  
M.D. Anderson

Grove of Jack Pines

TEMPERATURE CORRECTED  
AND HORIZONTALLY  
TAPED MEASUREMENTS

ROLAND W. ANDERSON  
COUNTY SURVEYOR  
ANOKA COUNTY, MINNESOTA

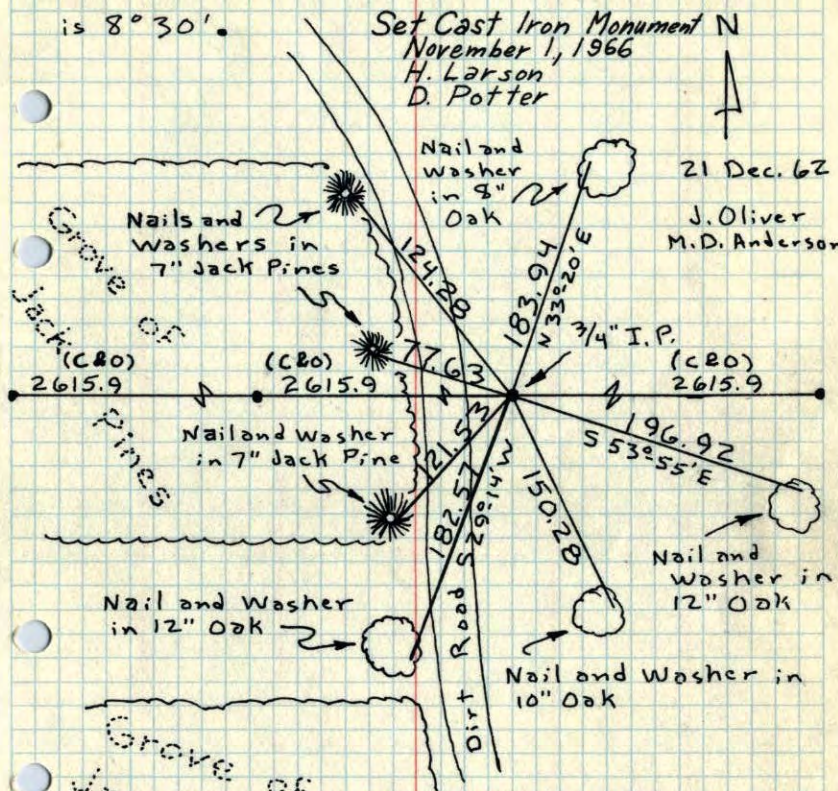
Tie Check  
July 11, 1966  
H. Larson  
D. Potter

7/21/70  
#10-740  
D. Powell  
R. Brian  
B. Olson

NE Cor. Sec. 2, T31, R24

Found 3/4" Pinched Iron Pipe From Cartwrights  
1944 Ties. Bearings are Cartwrights - Decl.  
is 8° 30'.

Set Cast Iron Monument N  
November 1, 1966  
H. Larson  
D. Potter



21 Dec. 62  
J. Oliver  
M.D. Anderson

Grove of Jack Pines

TEMPERATURE CORRECTED  
AND HORIZONTALLY  
TAPED MEASUREMENTS

ROLAND W. ANDERSON  
COUNTY SURVEYOR  
ANOKA COUNTY, MINNESOTA

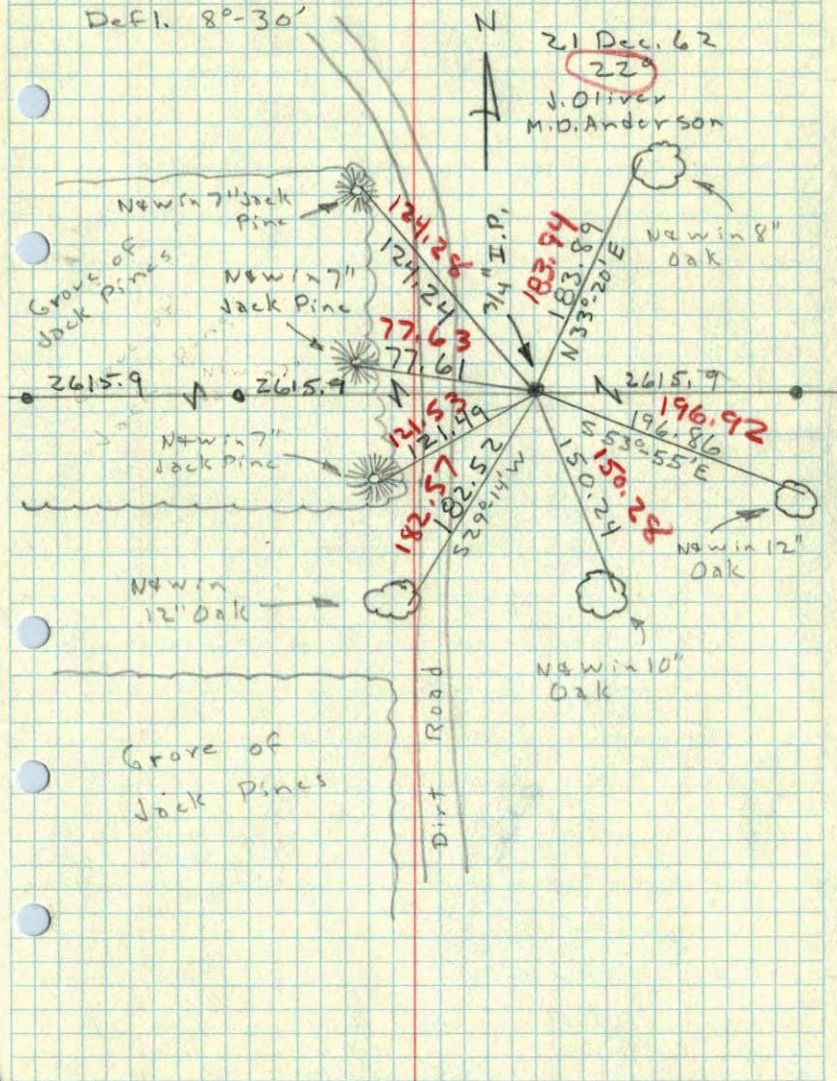
Tie Check  
July 11, 1966  
H. Larson  
D. Potter

NE Cor. Sec. 2, T31, R24

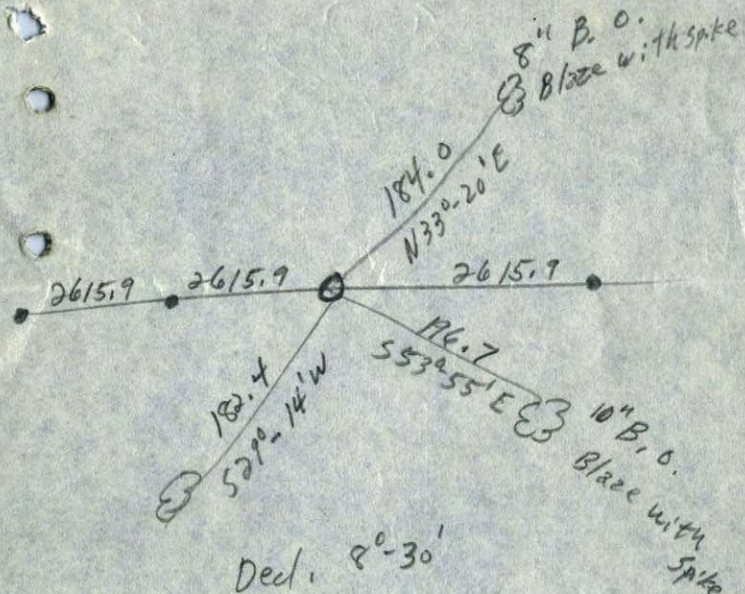
Found 3/4" Pinched Iron Pipe From Cartwrights

1944 Ties - Bearings are Cartwrights

Decl. 8°-30'



N.E. Corn. Sec. 2, T31, R24



1944  
 from C & O