

# CERTIFICATE OF LOCATION OF GOVERNMENT CORNER

County of Anoka

State of Minnesota

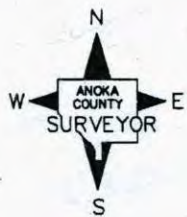
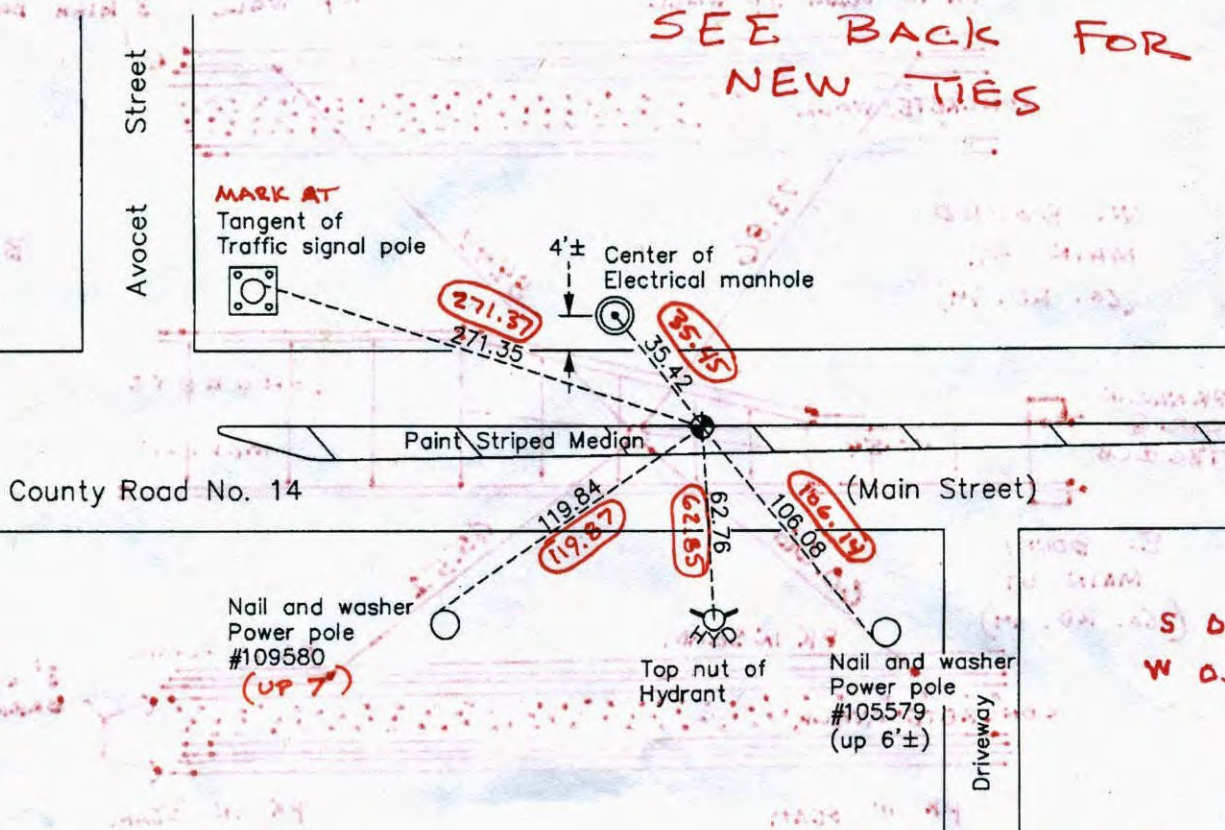
## South $\frac{1}{4}$ Corner of Sec. 2 Township 31 Range 24

On the 24th day of August, 1960, the described corner was evidenced by a railroad spike

and to perpetuate the location of said corner, at the exact location thereof, a permanent marker was placed consisting of a cast iron monument

AND on the 31st day of March, 2010, said permanent marker was found down 0.3' and under the south centerline stripe and the ties were updated

Updated reference ties are as shown below.



Revision Date

4/23/10

N.A.D. 1983 Coordinates  
(1996 Adjustment)

County Project Coordinates

Northing 159013.2932

Easting 492284.3774

Date 9/27/01

I hereby certify that this United States public land survey monument record is correct and complete to the best of my knowledge and belief.

*Larry D. Hoium* Date 4/23/10

Larry D. Hoium, Anoka County Surveyor

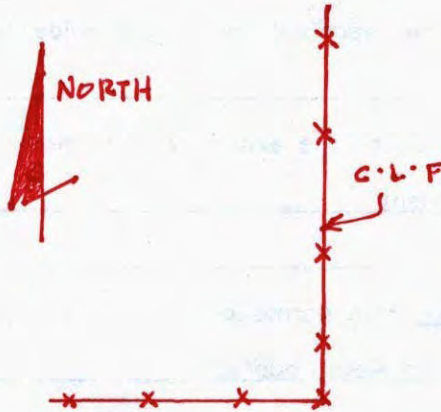
Minnesota License Number 18165

AVOCET STREET

8-22-12

JS. S.H.

SET 8" C.I.M.  
IN CORED HOLE  
SURROUNDED IN CONCRETE



PK IN SEAM TOP WALL  
PK IN SEAM TOP WALL  
3' HIGH BARRIER WALL



W. BOUND  
MAIN ST.  
(Co. RD. 14)

BRIDGE  
OVER  
RAILROAD  
TRACKS

PK NAIL IN  
CONC @  
TBC @ CB



E. BOUND  
MAIN ST  
(Co. RD. 14)



PK IN SEAM  
Top WALL

PK IN SEAM  
Top WALL

80.0 YIELDING  
PHOS. S (0.92) IN  
2000. P.P.S. 5/1/13

1170.5400 0.377  
170000 1000 0.010

# CERTIFICATE OF LOCATION OF GOVERNMENT CORNER

County of Anoka

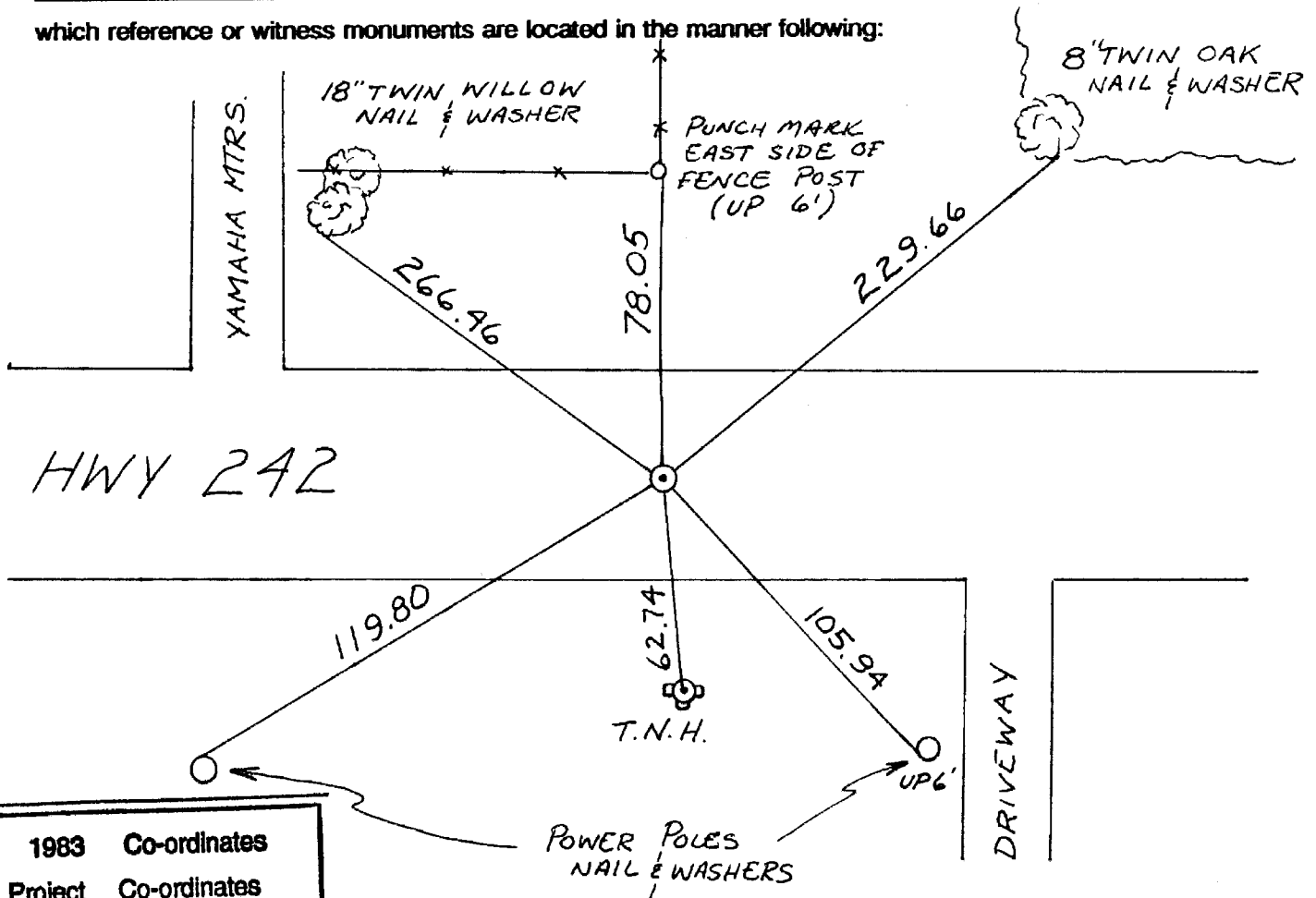
State of Minnesota

SOUTH <sup>1</sup>/<sub>4</sub> Corner of Sec. 2 Township 31 Range 24

I hereby certify that on the 24 day of AUG., 1960, I found the described corner which was evidenced by R/R SPIKE

and I further certify that to perpetuate the location of said corner, I did, at the exact location thereof, place a permanent marker consisting of CAST IRON MON.

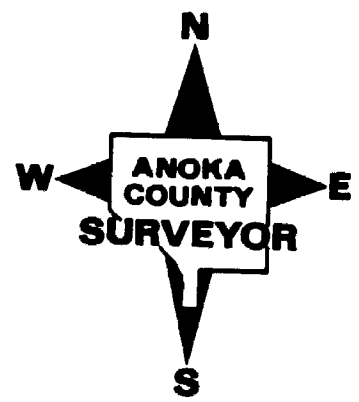
which reference or witness monuments are located in the manner following:

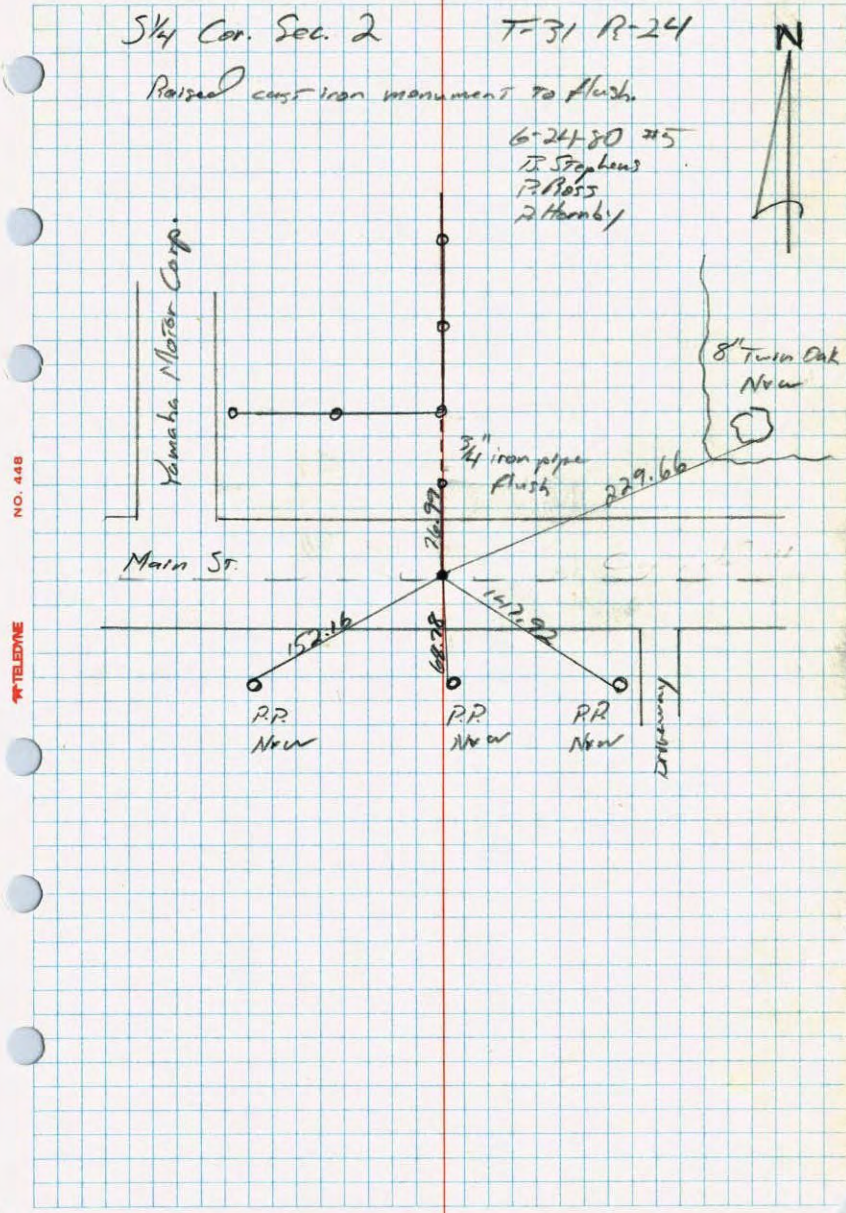
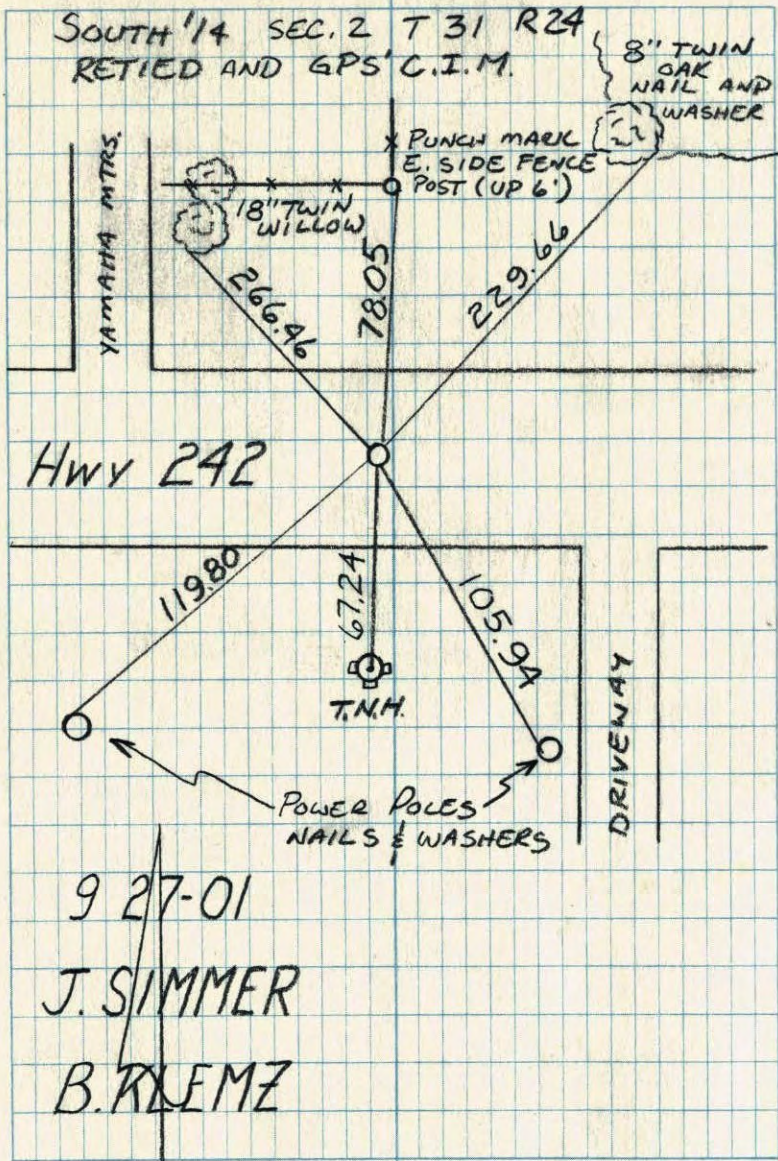


HWY 242

N.A.D.	1983	Co-ordinates
County	Project	Co-ordinates
Northing	<u>159013.2932</u>	
Easting	<u>492284.3774</u>	
State Plane Co-ordinates		

Revised date	Revised date	Revised date
<u>12-15-83</u>		
<u>6-24-86</u>		
<u>8-9-94</u>		
<u>9-27-01</u>		

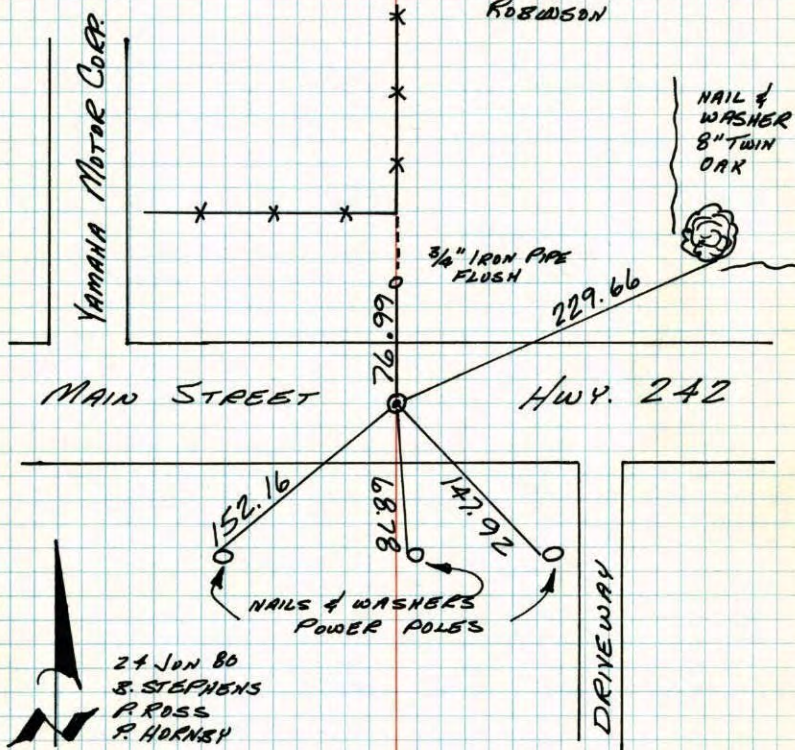




## S 1/4 CORNER SECTION 2-T31-R24

RAISED CAST IRON MONUMENT TO FLUSH. PK'S  
2.00' NORTH AND EAST.

24 AUG 60  
GIDDINGS  
POTTER  
CARLSON  
ROBINSON



TEMPERATURE CORRECTED  
AND HORIZONTALLY  
TAPED MEASUREMENTS

ROLAND W. ANDERSON  
COUNTY SURVEYOR  
ANOKA COUNTY, MINNESOTA

S 1/4 COR. Sec 2-T31-R24  
Found R.R. Spike, down 4'  
Set Cast Iron Monument

flush  
PK's 2.00' North + East.

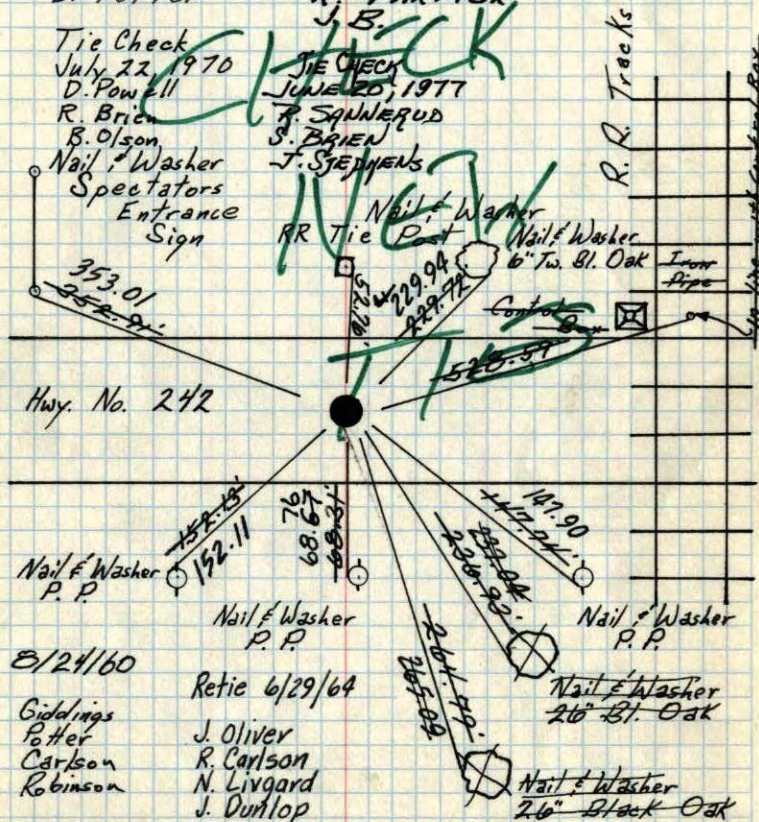
Tie Check  
July 18, 1966  
H. Larson  
D. Potter

TIE CHECK  
7/4/74  
R. FARMER  
J. B.

Tie Check  
July 22, 1970  
D. Powell

TIE CHECK  
JUNE 20, 1977  
R. SQULEGUD  
S. BRIEN  
J. SJEVENS

R. Brien  
B. Olson  
Nail & Washer  
Spectators  
Entrance  
Sign



TEMPERATURE CORRECTED  
AND HORIZONTALLY  
TAPED MEASUREMENTS

ROLAND W. ANDERSON  
COUNTY SURVEYOR  
ANOKA COUNTY, MINNESOTA

X

24

S 1/4 COR. Sec 2 - T 31 - R 24  
Found R.R. Spike, down 4'  
Set Cast Iron Monument

flush PK's 2.00' N+E.

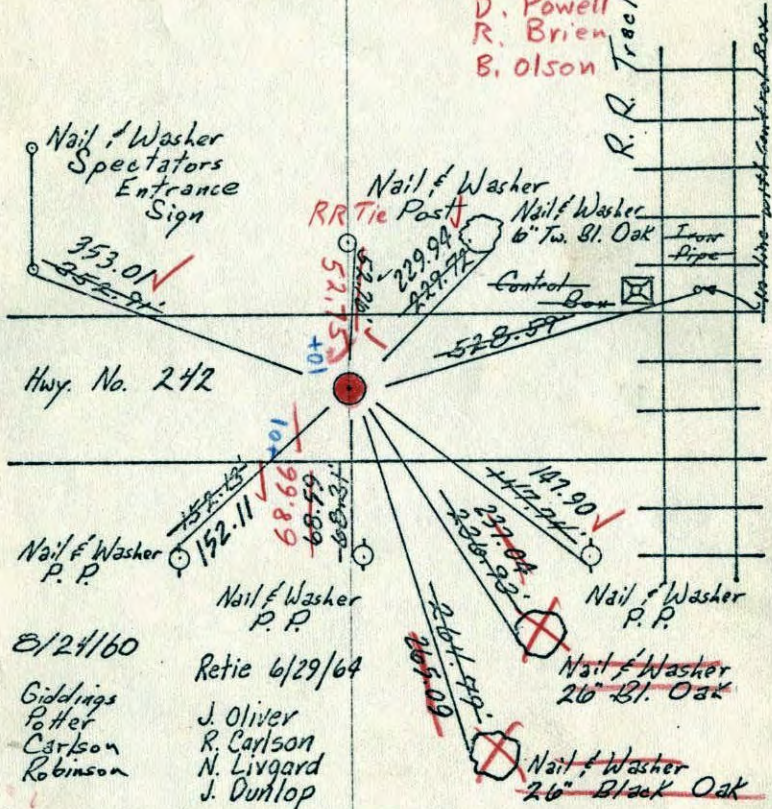
Raised 3 1/2"

7/22/70

#10-72

D. Powell  
R. Brien  
B. Olson

Tie Check  
July 18, 1966  
H. Larson  
D. Potter



Hwy. No. 242

Nail & Washer P.P.

Nail & Washer P.P.

Nail & Washer P.P.

Nail & Washer 26" Bl. Oak

Nail & Washer 26" Black Oak

8/24/60

Retie 6/29/64

Giddings  
Potter  
Carlson  
Robinson

J. Oliver  
R. Carlson  
N. Livgard  
J. Dunlop

TEMPERATURE CORRECTED  
AND HORIZONTALLY  
TAPED MEASUREMENTS

ROLAND W. ANDERSON  
COUNTY SURVEYOR  
ANOKA COUNTY, MINNESOTA

S 1/4 Corn. Sec. 2, T. 31, R. 24

Found R.R. Spike (Coon Rapids)  
Down 4'

Set Cast Iron Flush

Aug. 24, 1960

Temp. 80°

B. Giddings

B. Robinson

R. Carlson

D. Potter

TC

Spectators  
Entrance

Sign

Twin 6" Black Oak

Iron Pipe

state 242

(P.K. Nail .21' West)

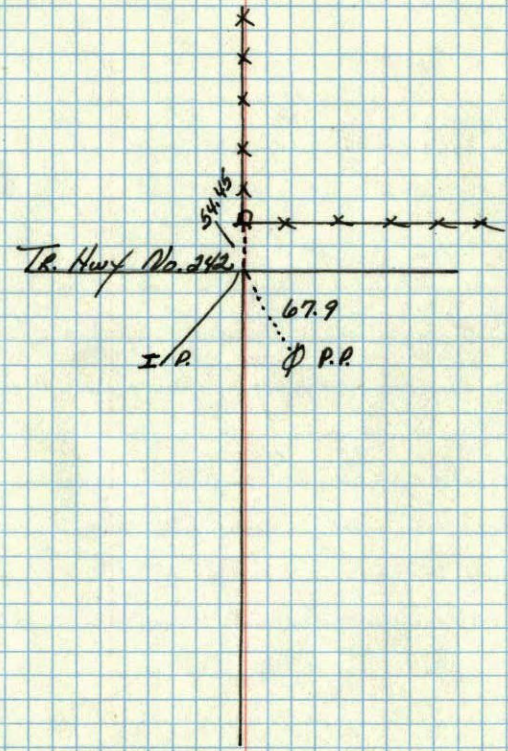
26" Black Oak

26" Black Oak

19/8/60

R.R. Track  
(In Line With Control Box)

5 2  
At 1/4 corner of Sec. 11, T. 31, R. 24 ✓



Summer 1957  
Minder Eng. Co.