

CERTIFICATE OF LOCATION OF GOVERNMENT CORNER

County of Anoka

State of Minnesota

South 1/4 Corner of Sec. 3 Township 31 Range 24

On the 17th day of August, 1960, the described corner was evidenced by an iron pipe

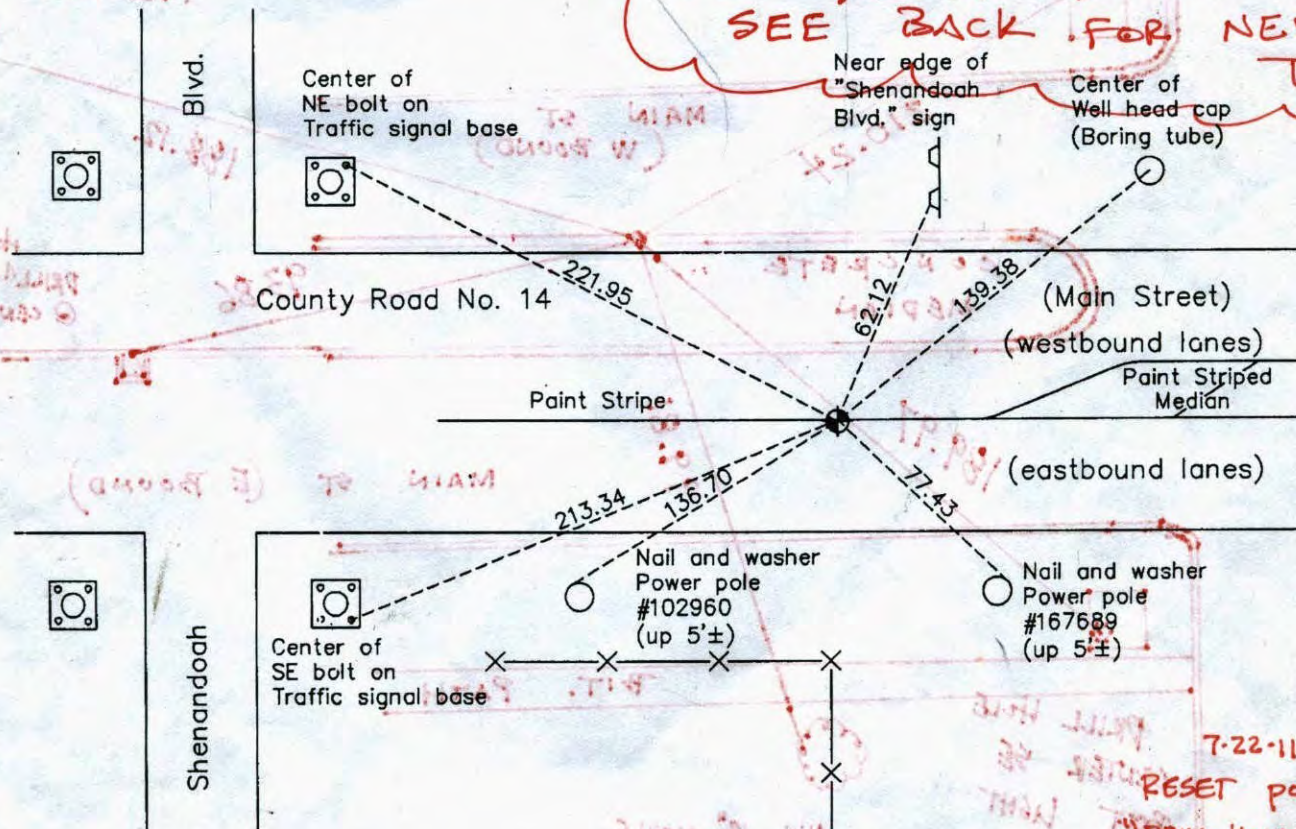
and to perpetuate the location of said corner, at the exact location thereof, a permanent marker was placed consisting of a cast iron monument

AND on the 18th day of March, 2010, said permanent marker was found flush and the ties were updated

Updated reference ties are as shown below.

8-16-14 J.S. SH
SET 1/2" I.P. IN CURB
SEE BACK FOR NEW TIES

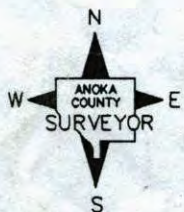
*Small hole
found in
top of
curb
on
west side
of
road*



(Main St. (E. Bound))

W.M. HANCOCK

7-22-11 J.S. SH.
RESET pos. w/ T/T
"DRILL HOLE IN TOP OF CURB N. SIDE OF MEDIAN" NEED STATIC GPS.



N.A.D. 1983 Coordinates
(1996 Adjustment)

County Project Coordinates

Northing 159157.6682

Easting 487034.1686

Date 9/14/01

I hereby certify that this United States public land survey monument record is correct and complete to the best of my knowledge and belief.

Larry D. Hoium Date 4/26/10

Larry D. Hoium, Anoka County Surveyor
Minnesota License Number 18165

Revision Date
4/26/10

*RS MON
pulling 8/30/10*

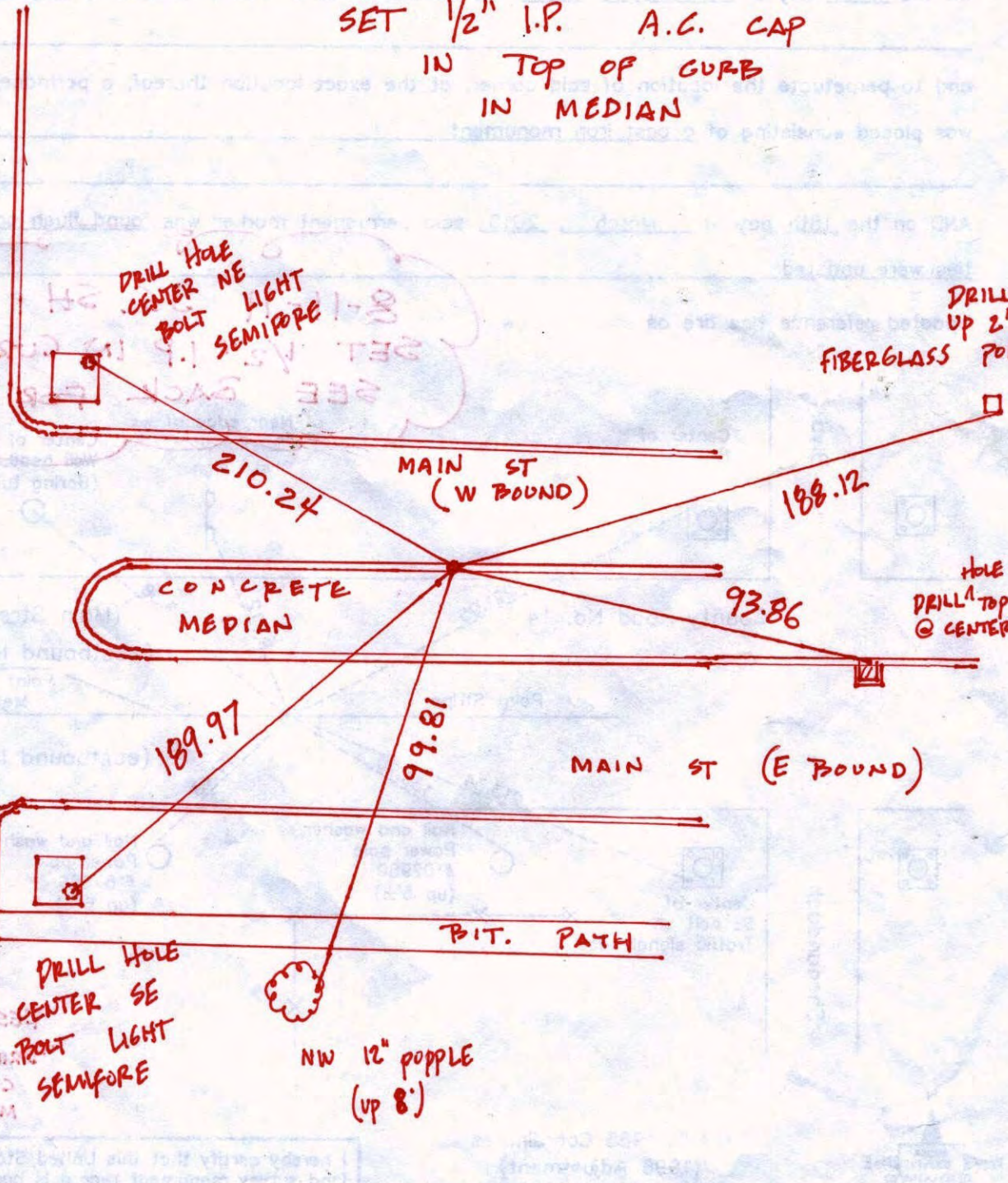
*159157.6630
487034.2214*

2012 Rep

CERTIFICATE OF LOCATION OF GOVERNMENT CORNER
County of Adams
State of Missouri
South 1/4 Corner of Sec. 3 Township 31 Range 24

SET 1/2" I.P. A.C. CAP
IN TOP OF CURB
IN MEDIAN

S H E N A N D O A H B L V D . N . W .



DRILL HOLE
CENTER NE
BOLT LIGHT
SEMIPRE

DRILL HOLE
UP 2' LIGHT
FIBERGLASS POLE

HOLE
DRILL TOP CURB
@ CENTER C.B

DRILL HOLE
CENTER SE
BOLT LIGHT
SEMIPRE

NW 12" popple
(up 8')

HE TOUGH SIDA
1812.7.730
VIA MAIL
M. BROWN & SONS

S¹/₄ COR SEC 3 T 31 R 24
RETIED AND REMOVED
FOR CONSTRUCTION.

NATIONAL PRESTRESS
NO. 446

S H E N A D D A H

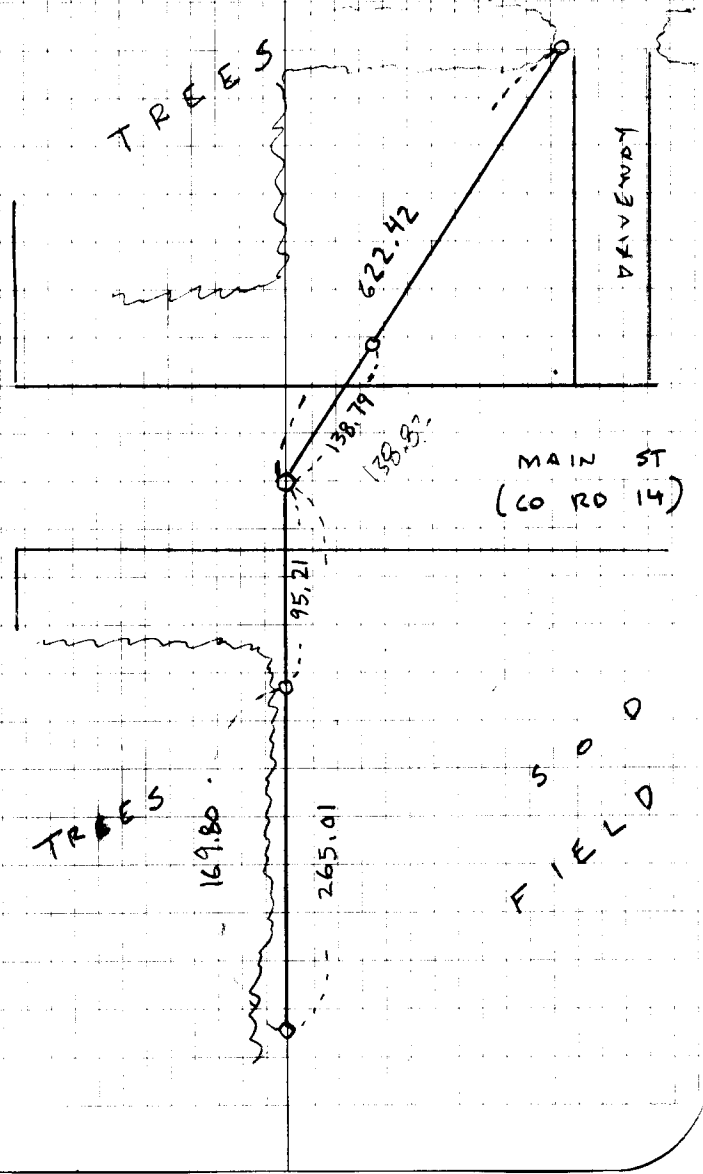
T R E E S

D R A V E W A Y

M A I N S T
(C O R O 14)

T R E E S

S O O
F I E L D



CERTIFICATE OF LOCATION OF GOVERNMENT CORNER

County of Anoka

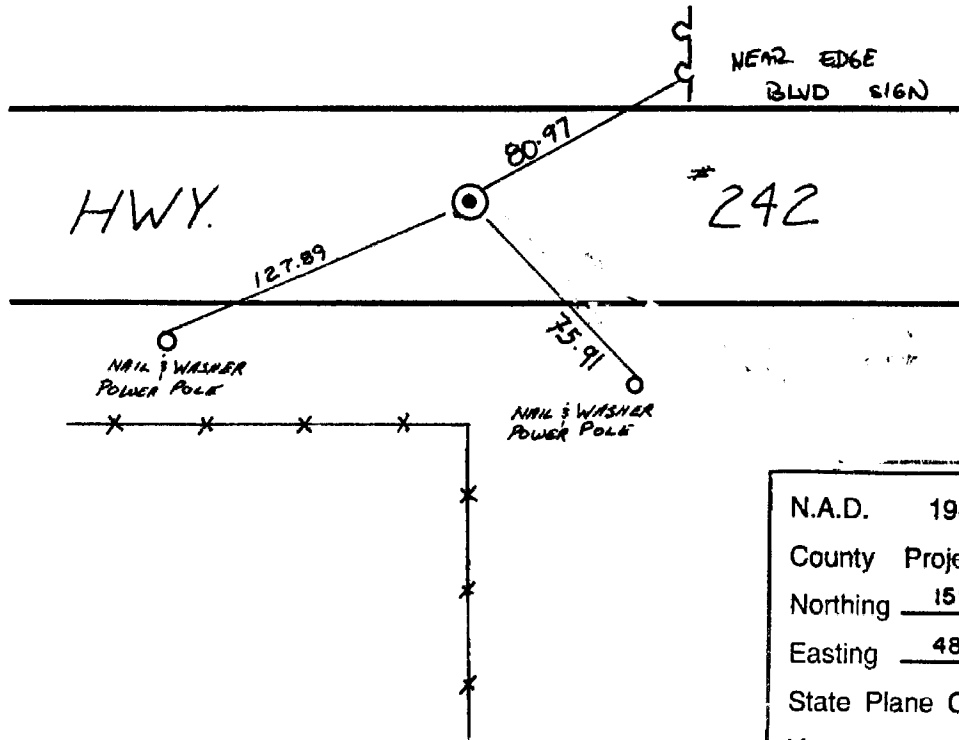
State of Minnesota

SOUTH ONE QUARTER Corner of Sec. 3 Township 31 Range 24

I hereby certify that on the 17 day of AUGUST, 1960, I found the described corner which was evidenced by IRON PIPE

and I further certify that to perpetuate the location of said corner, I did, at the exact location thereof, place a permanent marker consisting of CAST IRON MONUMENT

which reference or witness monuments are located in the manner following:



N.A.D.	1983	Co-ordinates
County	Project	Co-ordinates
Northing	<u>159157.6682</u>	
Easting	<u>487034.1686</u>	
State Plane Co-ordinates		
Y	_____	
X	_____	
Date	_____	

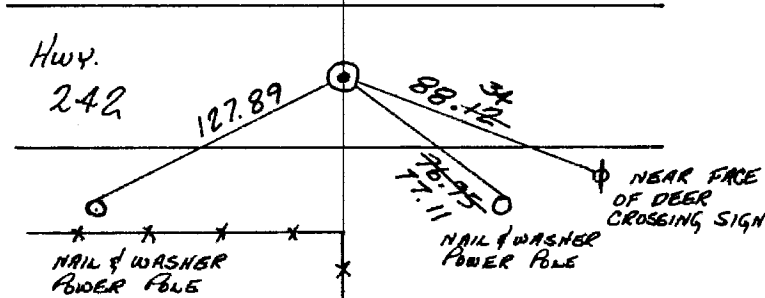
Revised date
7-21-70
7-5-74
6-17-77
6-25-80
<small>REDRAWN</small> 12-15-83
6-24-86
6-24-91

By	CHECKED
D.P. R.B. B.O.	8-9-94
R.F. J.B.	
R.S. B.S. J.S.	
B.S. P.R. J.S.	
R. KREUSER	
D. ROSS	
B. KLEMMZ	

Minnesota State Plane Coordinates
 South Zone
 Y _____ X _____
 _____ , _____
 County Surveyor Date
 Registered Land Surveyor No. _____

S 1/4 COR. SEC. 3-T31-R24

REPLACED IRON PIPE WITH CAST IRON MONUMENT
 FLUSH. 17 AUG 60
 B. ROGERS O. POTTER
 D. GIDDINGS R. CARLSON R. ROBINSON



TIE CHECK
 21 JUL 70
 D. POWELL
 R. BRIEN
 B. OLSON

TIE CHECK
 5 JUL 74
 R. FARMER
 J. BOETTCHER

TIE CHECK
 17 JUN 77
 R. SANBERUD
 S. BRIEN
 J. STEPHENS

TIE CHECK
 6-25-80
 B. STEPHENS
 P. ROSS
 P. VORNBY

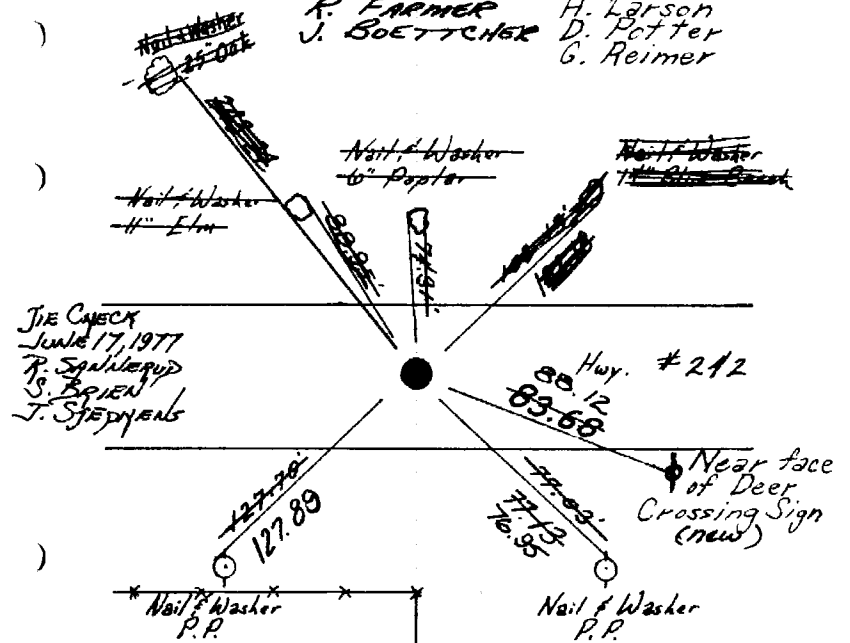
TEMPERATURE CORRECTED
 AND HORIZONTALLY
 TAPED MEASUREMENTS
 ROLAND W. ANDERSON
 COUNTY SURVEYOR
 ANOKA COUNTY, MINNESOTA

S 1/4 Cor. Sec 3-T31-R24

Replaced Iron Pipe
 with
 Cast Iron Mon. flush

TIE CHECK
 7/5/74
 R. FARMER
 J. BOETTCHER

Tie Check
 July 21, 1966
 H. Larson
 D. Potter
 G. Reimer



TIE CHECK
 June 17, 1977
 R. SANBERUD
 S. BRIEN
 J. STEPHENS

8/17/60
 Bill Rogers
 Dennis Potter
 Dick Giddings
 Randy Carlson
 Ralph Robinson

Retie 6/29/64

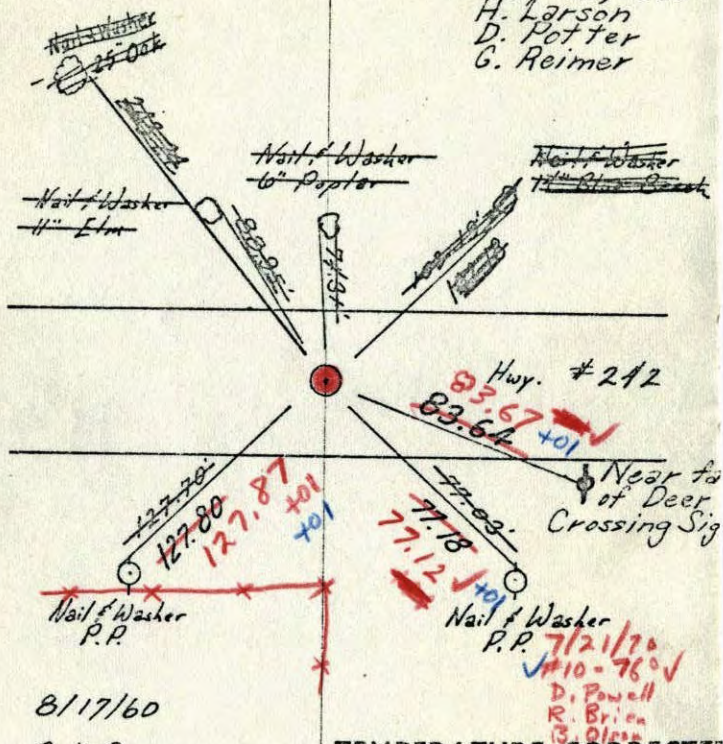
J. Oliver
 R. Carlson
 N. Livgard
 J. Dunlop

TEMPERATURE CORRECTED
 AND HORIZONTALLY
 TAPED MEASUREMENTS
 Tie Check
 July 21, 1970
 D. Powell
 R. Brien, B. Olson
 ROLAND W. ANDERSON
 COUNTY SURVEYOR
 ANOKA COUNTY, MINNESOTA

26
S 1/4 Cor. Sec 3 - T31-R24

Replaced Iron Pipe
with
Cast Iron Mon. flush

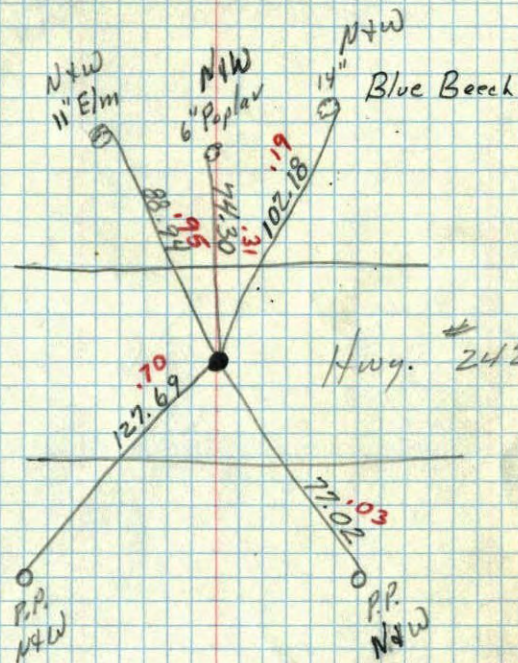
Tie Check
July 21, 1966
H. Larson
D. Potter
G. Reimer



TEMPERATURE CORRECTED
AND HORIZONTALLY
TAPED MEASUREMENTS

ROLAND W. ANDERSON
COUNTY SURVEYOR
ANOKA COUNTY, MINNESOTA

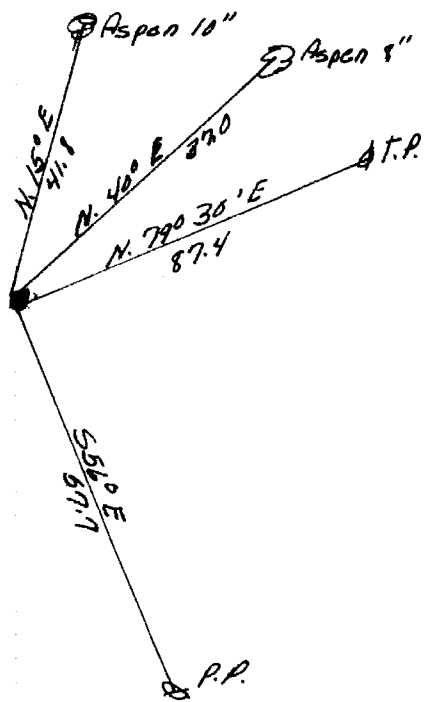
S 1/4 Cor. Sec. 3 T31 R24
Replaced Iron Pipe with Cast Iron Mon.
flush



TC
Temp. 85°
8/17/60
Bill Rogers
Dennis Potter
Dick Giddings
Ralph Robinson
Randy Carlson

AK. 7

S 1/4 cor. of Sec. 3, T31, R. 24
Concrete Monument



July 10, 1946
H. A. Cartwright

