

CERTIFICATE OF LOCATION OF GOVERNMENT CORNER

County of Anoka

State of Minnesota

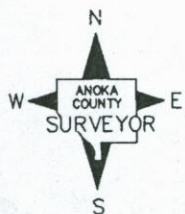
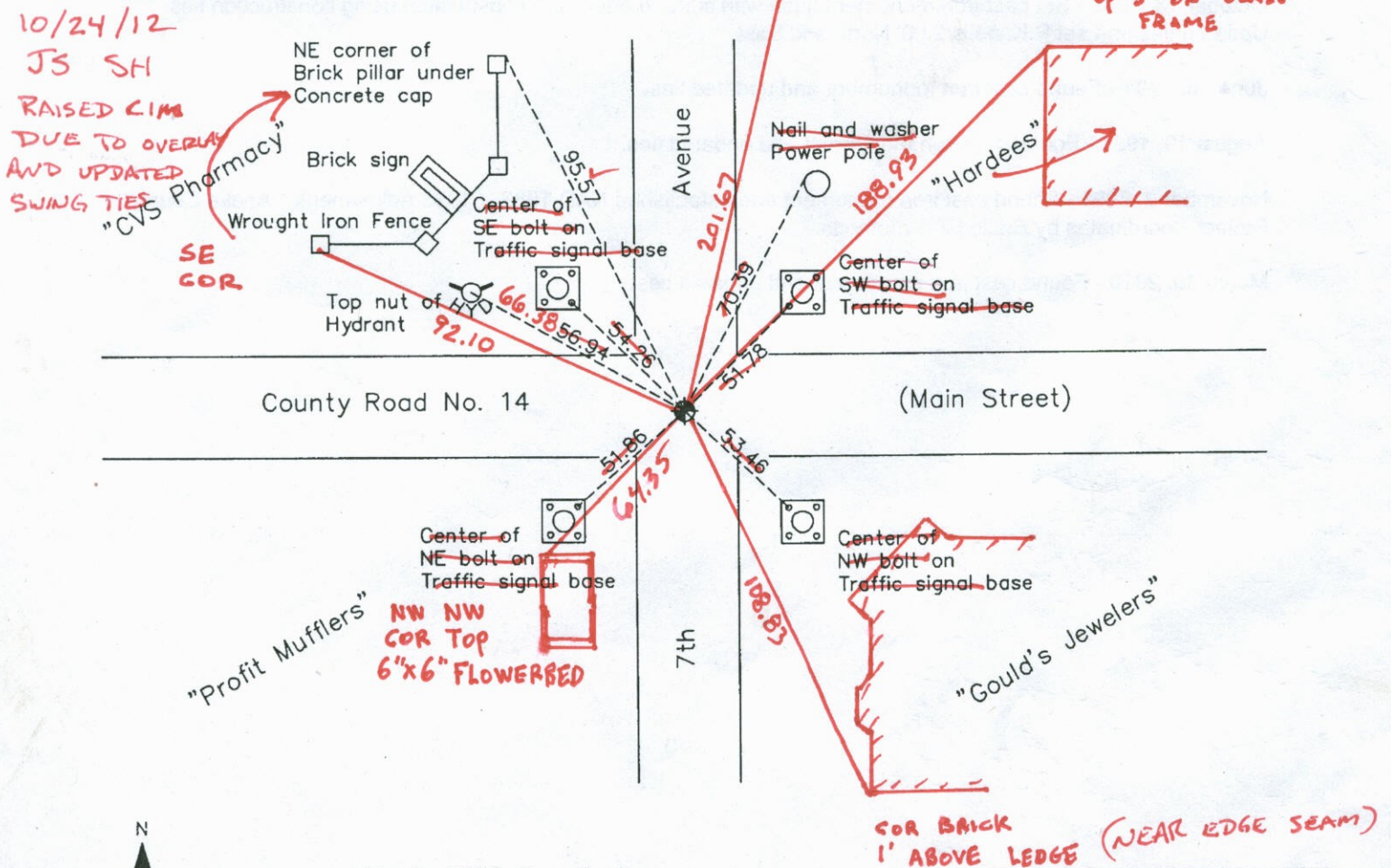
South 1/4 Corner of Sec. 6 Township 31 Range 24

On the 10th day of May, 1963, the described corner was evidenced by area resurvey

and to perpetuate the location of said corner, at the exact location thereof, a permanent marker was placed consisting of a cast iron monument

AND on the 30th day of March, 2010, said permanent marker was found and the ties were updated

Updated reference ties are as shown below.



Revision Date

4/29/10

N.A.D. 1983 Coordinates
(1996 Adjustment)

County Project Coordinates

Northing 159249.6020

Easting 471162.3803

Date 11/02/01

I hereby certify that this United States public land survey monument record is correct and complete to the best of my knowledge and belief.

Larry D. Hoium Date 4/29/10

Larry D. Hoium, Anoka County Surveyor

Minnesota License Number 18165

HISTORY OF GOVERNMENT CORNER

Page No. 38

County of Anoka

State of Minnesota

South 1/4 Corner of Sec. 6 Township 31 Range 24

CORNER HISTORY:

May 10, 1963 - Set P.K. nail using area resurvey. Established ties to monument.

July 27, 1966 - Found P.K. nail and updated ties.

July 19, 1974 - Found P.K. nail and updated ties.

June 20, 1977 - Found P.K. nail and updated ties. Set P.K. nails 2.00' south and east.

August 2, 1984 - Replaced P.K. nail with a cast iron monument and updated ties.

July 6, 1987 - Set construction ties and removed monument (type unknown) prior to road construction.

October 13, 1987 - Set cast iron monument flush with surface after road construction using construction ties. Updated ties and set P.K. nails 2.00' North and East.

June 25, 1991 - Found cast iron monument and updated ties.

August 19, 1994 - Found cast iron monument and updated ties.

November 2, 2001 - Found cast iron monument and established NAD 1983 (1996 Adjustment) Anoka County Project Coordinates by Static GPS methods.

March 30, 2010 - Found cast iron monument and updated ties.

CERTIFICATE OF LOCATION OF GOVERNMENT CORNER

County of Anoka

State of Minnesota

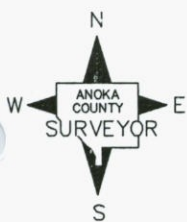
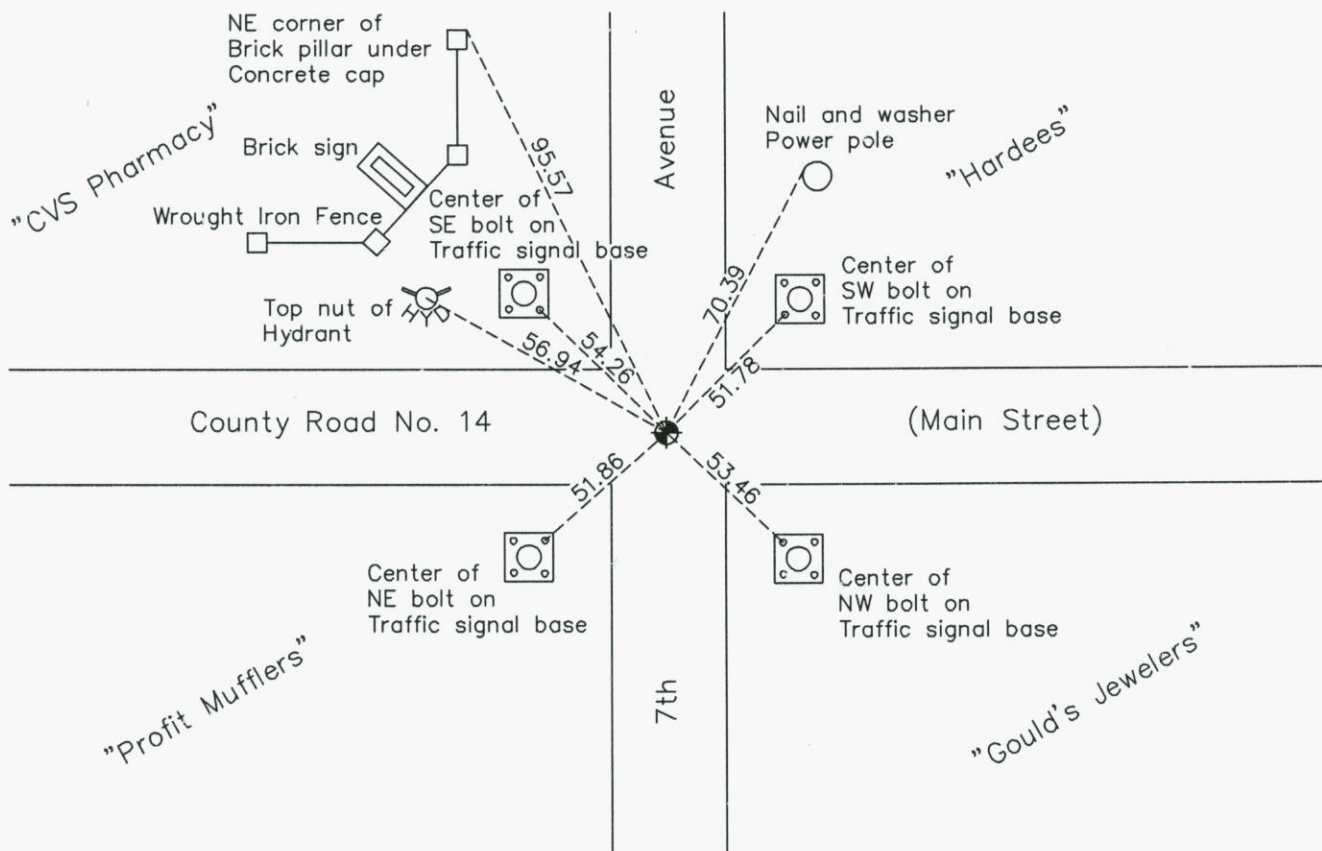
South 1/4 Corner of Sec. 6 Township 31 Range 24

On the 10th day of May, 1963, the described corner was evidenced by area resurvey

and to perpetuate the location of said corner, at the exact location thereof, a permanent marker was placed consisting of a cast iron monument

AND on the 30th day of March, 2010, said permanent marker was found and the ties
were updated

Updated reference ties are as shown below.



Revision Date

4/29/10

N.A.D. 1983 Coordinates
(1996 Adjustment)

| County Project Coordinates | |
|----------------------------|-------------|
| Northing | 159249.6020 |
| Easting | 471162.3803 |
| Date | 11/02/01 |

I hereby certify that this United States public land survey monument record is correct and complete to the best of my knowledge and belief.

Larry D. Hoium Date 4/29/10

Larry D. Hoium, Anoka County Surveyor
Minnesota License Number 18165

CERTIFICATE OF LOCATION OF GOVERNMENT CORNER

County of Anoka

State of Minnesota

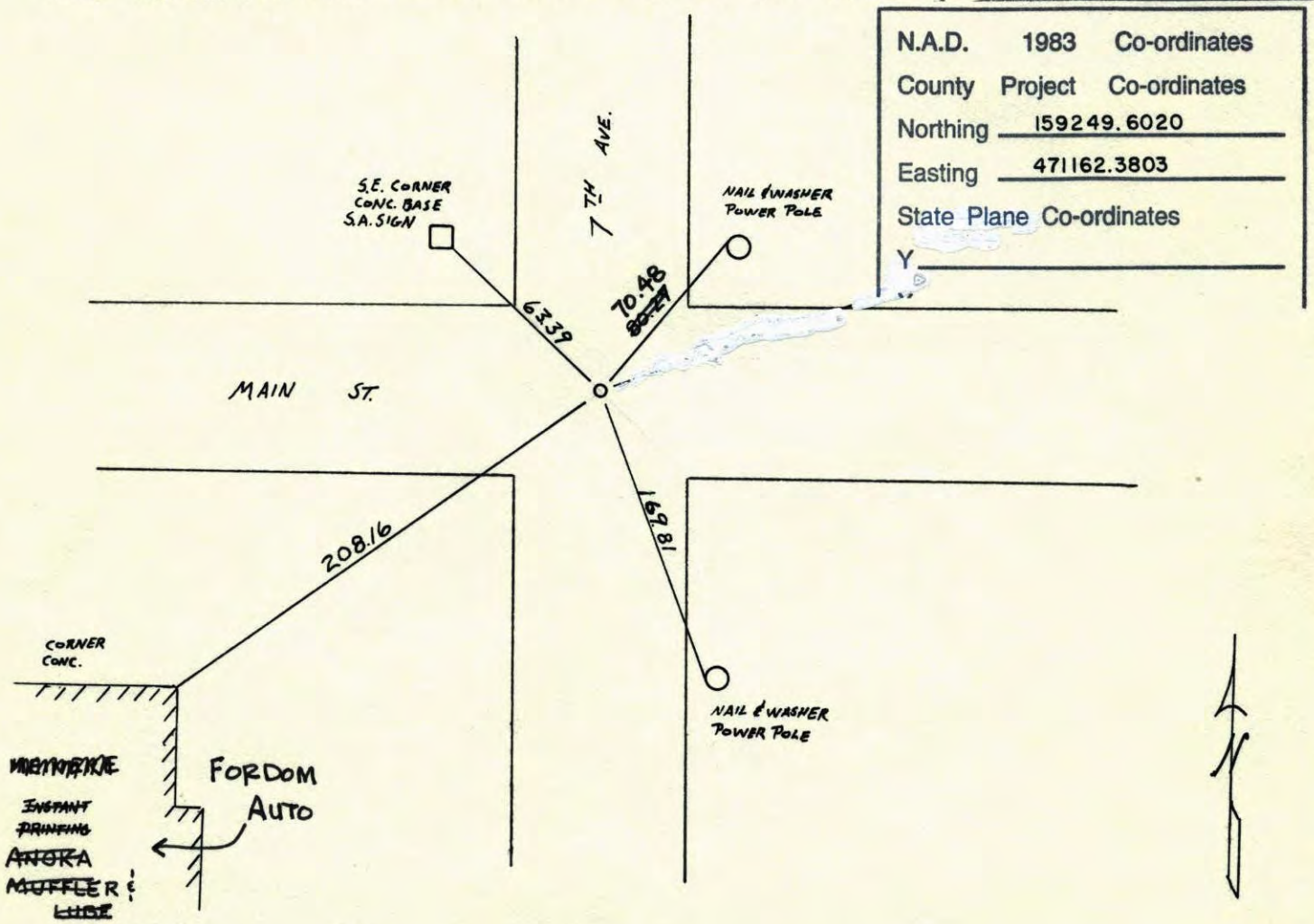
SOUTH 1/4 Corner of Sec. 6 Township 31 Range 24

I hereby certify that on the 10 day of MAY, 1963, I found the described corner which was evidenced by AREA RESURVEY

and I further certify that to perpetuate the location of said corner, I did, at the exact location thereof, place a permanent marker consisting of CAST IRON MON.

which reference or witness monuments are located in the manner following:

RESET CAST IRON MONUMENT AFTER CONSTRUCTION, CAST IRON FLUSH WITH P.K. NAILS 2.00 NORTH AND EAST



| | | |
|--------------------------|--------------------|--------------|
| N.A.D. | 1983 | Co-ordinates |
| County | Project | Co-ordinates |
| Northing | <u>159249.6020</u> | |
| Easting | <u>471162.3803</u> | |
| State Plane Co-ordinates | | |
| Y | _____ | |

| Revised date | By |
|-----------------|------------------|
| <u>10-13-87</u> | <u>H. LARSON</u> |
| <u>6-25-91</u> | <u>B. KLEMZ</u> |
| <u>8-19-94</u> | |
| | |
| | |
| | |

Minnesota State Plane Coordinates
 South Zone
 Y _____ X _____

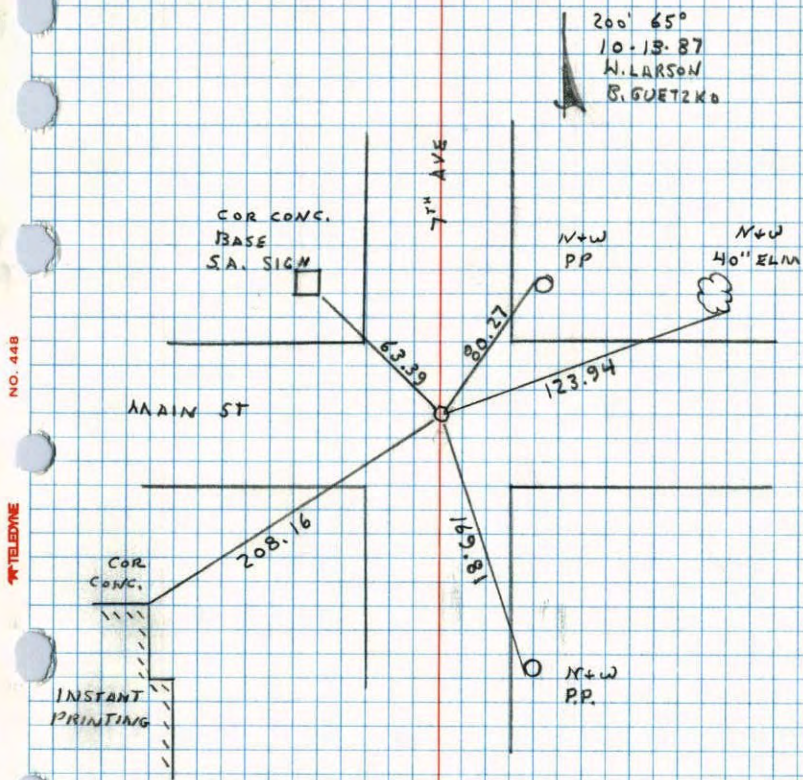
 County Surveyor _____ Date _____
 Registered Land Surveyor No. _____

RE DRAWN By J. STIEREKSON

SOUTH 1/4 CORNER SECTION 6 T31 R24

RESET CAST IRON MON. AFTER CONSTRUCTION.

C.I. FLUSH PKs 2.00' NORTH AND EAST.



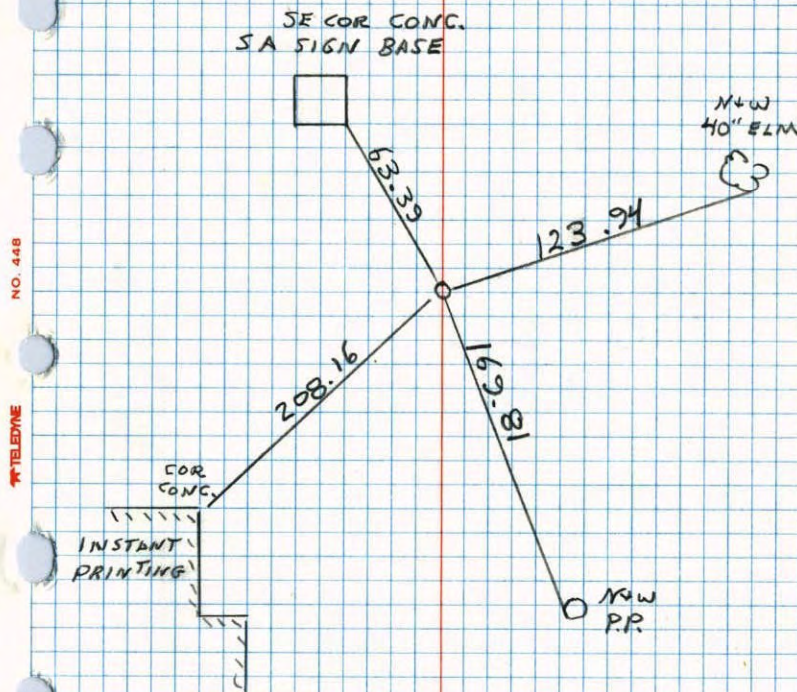
200' 65°
10-13-87
W. LARSON
B. GUETZKO

CONSTRUCTION TIES

SOUTH 1/4 CORNER SECTION 6 T31 R24

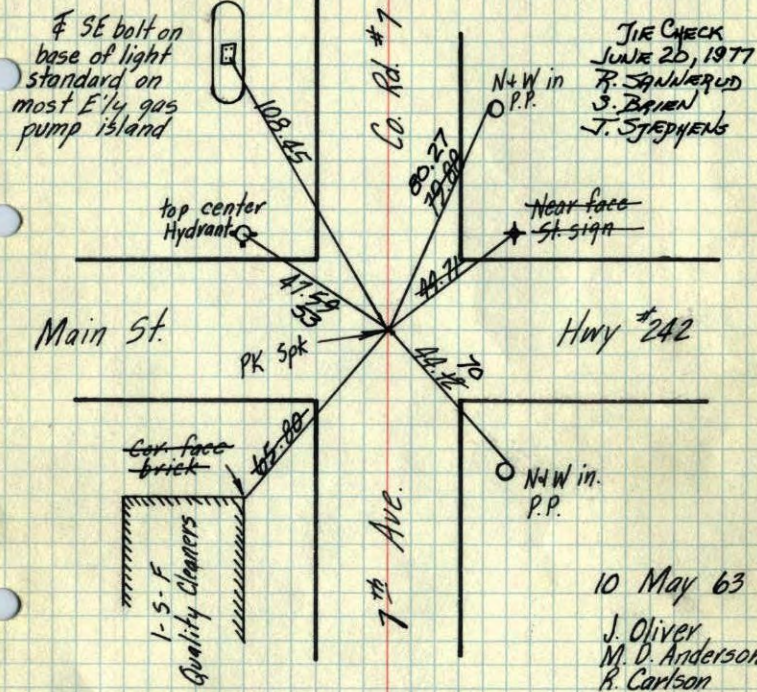
RETIED AND REMOVED 7-6-87

W. LARSON
B. GUETZKO
H. GRAMS



5 1/4 Cor. Sec. 6 T31, R24

Set Pk Spk. from Resurvey
 Set P.Ks. 2.00' SOUTH EAST
 REPLACED PK WITH CAST IRON 8-2-84 G.L.P.S.
 D. ROSS
 D. VOGEL



TEMPERATURE CORRECTED
 AND HORIZONTALLY
 TAPED MEASUREMENTS

Tie Check
 July 21, 1966
 H. Larson
 D. Potter
 G. Reimer

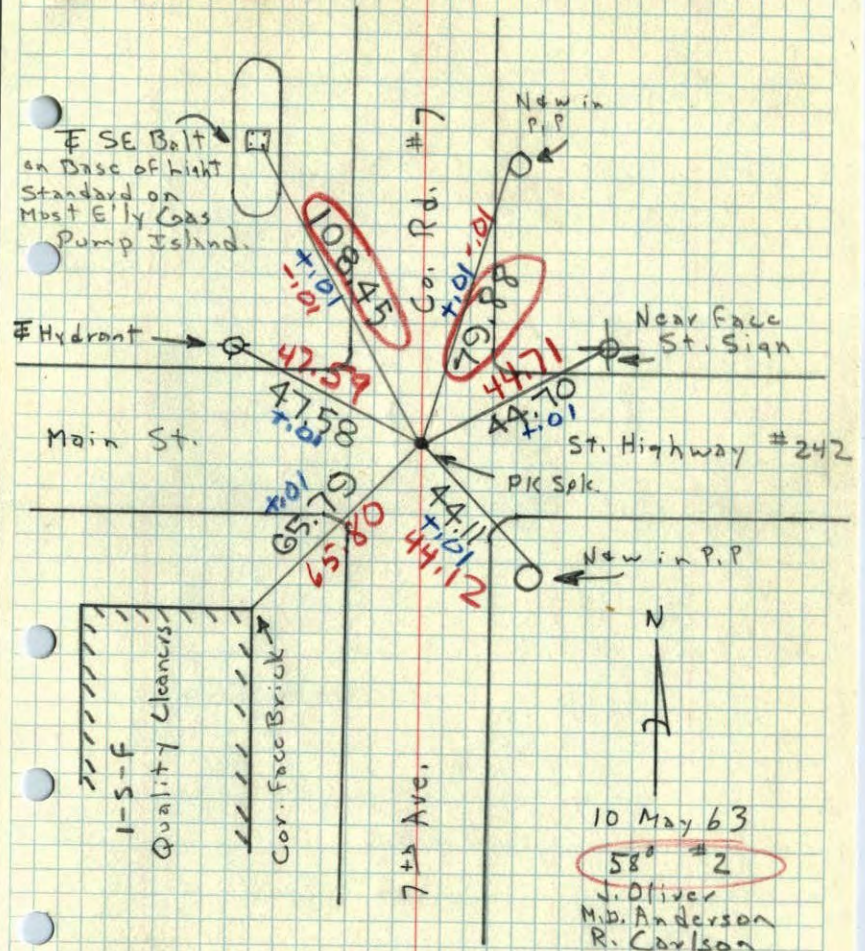
TIE CHECK
 July 19, 1974
 R. FARMER
 N. O.
 D. O.

TIE CHECK
 7-17-80
 B. STEPHENS
 P. ROSS
 P. HORNBY

ROLAND W. ANDERSON
 COUNTY SURVEYOR
 ANOKA COUNTY, MINNESOTA

So. 1/4 Cor. Sec. 6, T31, R24

Set PK Spk. From Resurvey



10 May 63
 58.42
 J. Oliver
 M.D. Anderson
 R. Carlson