

CERTIFICATE OF LOCATION OF GOVERNMENT CORNER

County of Anoka

State of Minnesota

Northwest Corner of Sec. 7 Township 31 Range 24

On the 8th day of January, 1981, the described corner was evidenced by area resurvey

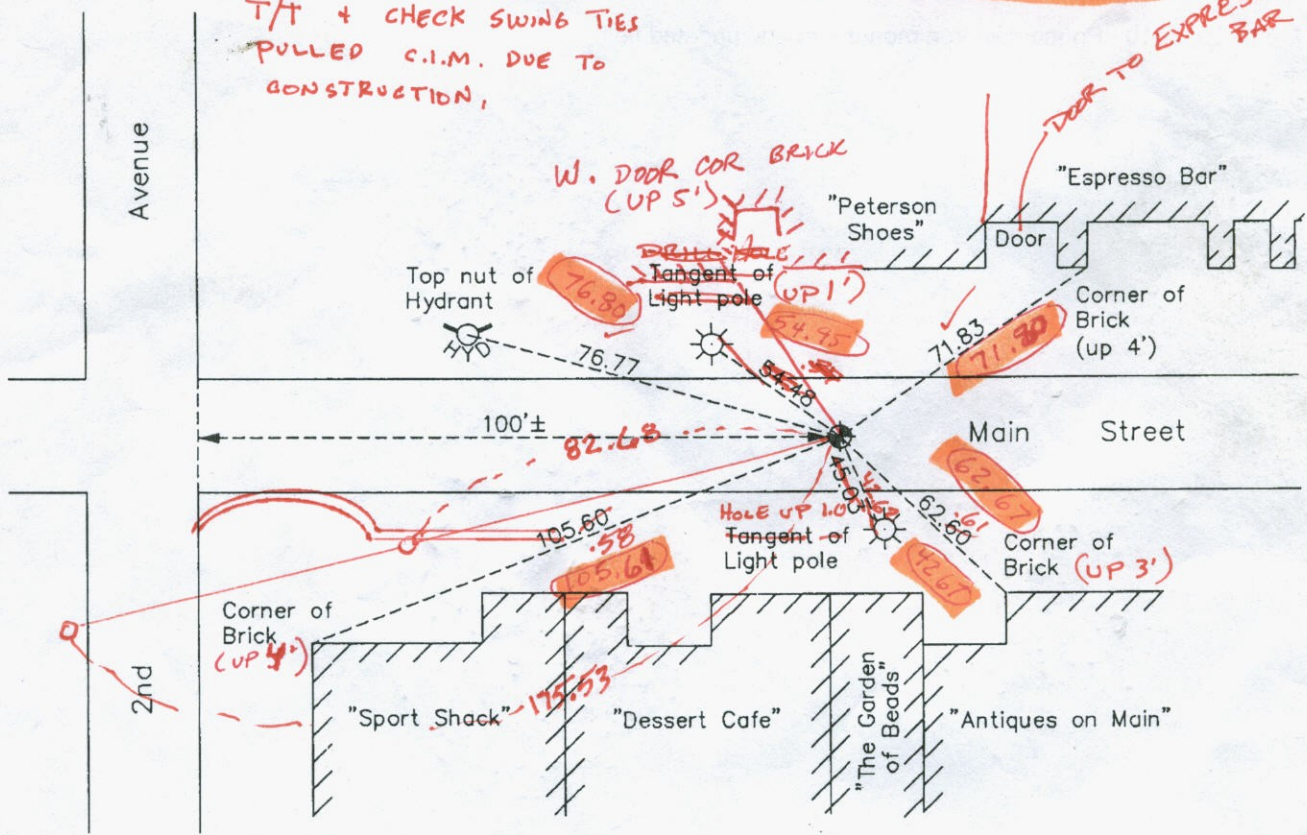
and to perpetuate the location of said corner, at the exact location thereof, a permanent marker was placed consisting of a cast iron monument

AND on the 29th day of March, 2010, said permanent marker was found and the ties were updated

Updated reference ties are as shown below.

7-26-12 JS SH
T/T + CHECK SWING TIES
PULLED C.I.M. DUE TO
CONSTRUCTION,

11-16-12 JS SH SS RESET C.I.M.
VRS OF C.I.M N: 159333.2776
3DQ: 0.06 E: 468496.5845
CIRCLED TIES ARE GOOD



ANOKA COUNTY SURVEYOR

Revision Date

4/29/10

N.A.D. 1983 Coordinates
(1996 Adjustment)

County Project Coordinates	
Northing	159333.2524
Easting	468496.5788
Date	6/19/01

I hereby certify that this United States public land survey monument record is correct and complete to the best of my knowledge and belief.

Larry D. Hoium Date 4/29/10

Larry D. Hoium, Anoka County Surveyor

Minnesota License Number 18165

VRS Pos. 3D QUAL: 0.05 N: 159333.2301 E: 468496.4955

HISTORY OF GOVERNMENT CORNER

Page No. 38A

County of Anoka

State of Minnesota

Northwest Corner of Sec. 7 Township 31 Range 24

CORNER HISTORY:

January 8, 1981 - Set P.K. nail using area resurvey and established ties to monument.

July 26, 1983 - Found P.K. nail and updated ties.

August 2, 1984 - Replaced P.K. nail with a cast iron monument and set P.K. nails 2.00' north and east.
Updated ties.

June 19, 1986 - Found cast iron monument and updated ties.

August 19, 1994 - Found cast iron monument and updated ties.

June 19, 2001 - Found cast iron monument and established NAD 1983 (1996 Adjustment) Anoka County
Project Coordinates by Static GPS methods.

March 29, 2010 - Found cast iron monument and updated ties.

CERTIFICATE OF LOCATION OF GOVERNMENT CORNER

County of Anoka

State of Minnesota

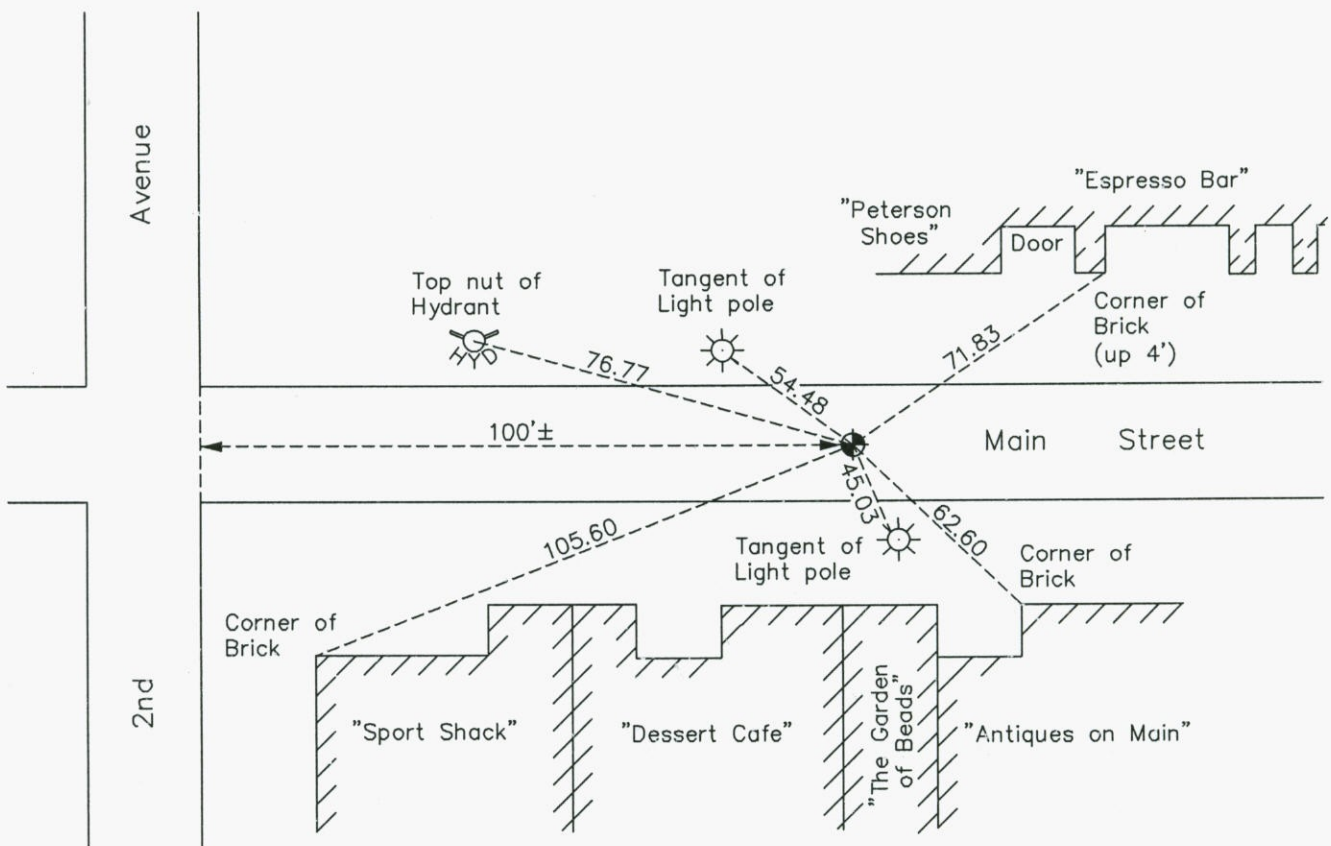
Northwest Corner of Sec. 7 Township 31 Range 24

On the 8th day of January, 1981, the described corner was evidenced by area resurvey

and to perpetuate the location of said corner, at the exact location thereof, a permanent marker was placed consisting of a cast iron monument

AND on the 29th day of March, 2010, said permanent marker was found and the ties were updated

Updated reference ties are as shown below.



N
W ANOKA COUNTY SURVEYOR E
S

Revision Date
4/29/10

N.A.D. 1983 Coordinates
(1996 Adjustment)

County Project Coordinates	
Northing	159333.2524
Easting	468496.5788
Date	6/19/01

I hereby certify that this United States public land survey monument record is correct and complete to the best of my knowledge and belief.

Larry D. Hoium Date 4/29/10

Larry D. Hoium, Anoka County Surveyor
Minnesota License Number 18165

CERTIFICATE OF LOCATION OF GOVERNMENT CORNER

County of Anoka

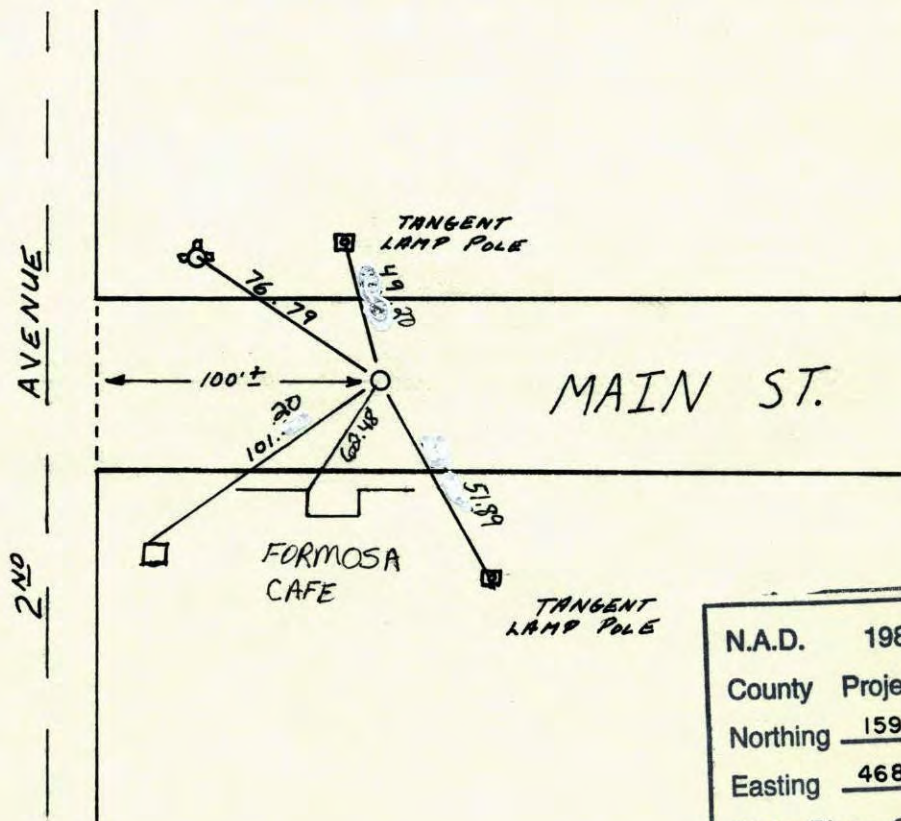
State of Minnesota

NORTHWEST Corner of Sec. 7 Township 31 Range 24

I hereby certify that on the 8 day of JAN., 1981, I found the described corner which was evidenced by AREA RESURVEY

and I further certify that to perpetuate the location of said corner, I did, at the exact location thereof, place a permanent marker consisting of P.K. NAIL CAST IRON

which reference or witness monuments are located in the manner following:



N.A.D.	1983	Co-ordinates
County	Project	Co-ordinates
Northing	<u>159333.2524</u>	
Easting	<u>468496.5788</u>	
State Plane Co-ordinates	Y _____	
	X _____	
Date	_____	

Revised date	By
<u>1-8-81</u>	<u>H.L. B.G. D.N.</u>
<u>7-26-88</u>	<u>P.R. J.B. J.V.</u>
<u>REDRAWN</u> <u>12-22-83</u>	<u>R. KREUSER</u>
<u>6-19-86</u>	<u>D. ROSS</u>
<u>8-19-94</u>	

Minnesota State Plane Coordinates
South Zone
Y _____ X _____

County Surveyor _____ Date _____
Registered Land Surveyor No. _____

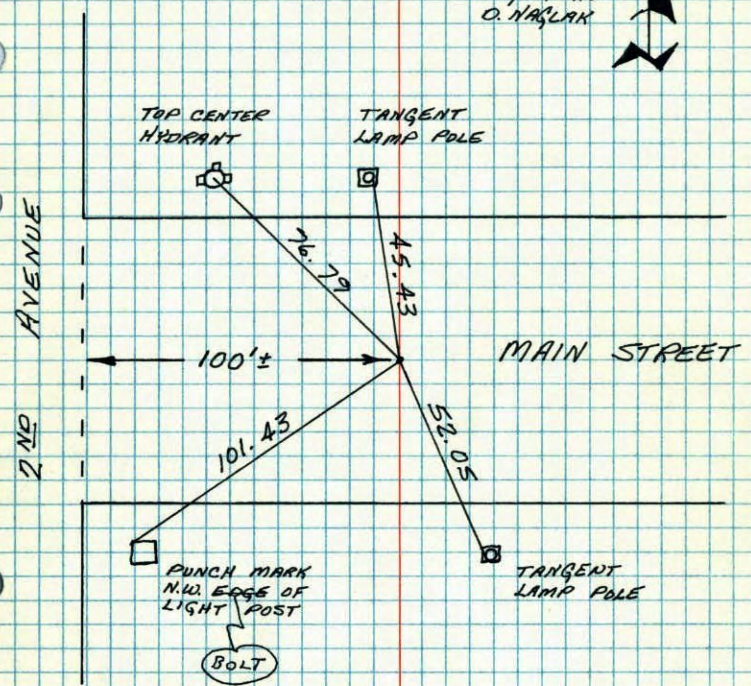
N.W. CORNER SECTION 7 - T31 - R24

SET PK NAIL FROM AREA SURVEY.

REPLACED PK WITH CAST IRON
 8-20-84 G. LIPS D. ROSS D. VOGEL 8 JAN 81
 PK 5' 2.00' NORTH AND EAST H. LARSON
 B. GUETZKO
 O. NAGELAK



NO. 448 TELEPHONE



TEMPERATURE CORRECTED
 AND HORIZONTALLY
 TAPED MEASUREMENTS

ROLAND W. ANDERSON
 COUNTY SURVEYOR
 ANOKA COUNTY, MINNESOTA

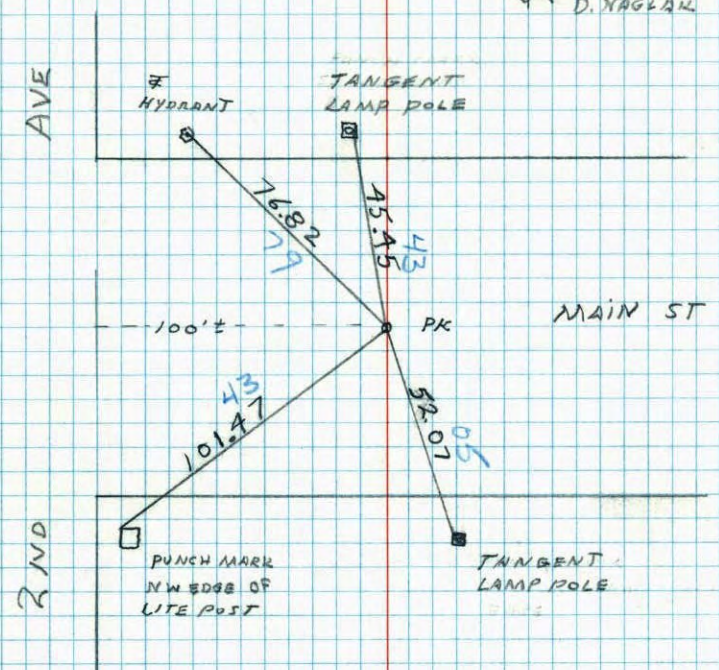
N.W. COR. SECTION 7 T31 R24

SET PK NAIL FROM AREA SURVEY

#3 5°
 1-8-81
 H. LARSON
 B. GUETZKO
 D. NAGELAK



NO. 448 TELEPHONE



TEMPERATURE CORRECTED
 AND HORIZONTALLY
 TAPED MEASUREMENTS

ROLAND W. ANDERSON
 COUNTY SURVEYOR
 ANOKA COUNTY, MINNESOTA