

CERTIFICATE OF LOCATION OF GOVERNMENT CORNER

County of Anoka

State of Minnesota

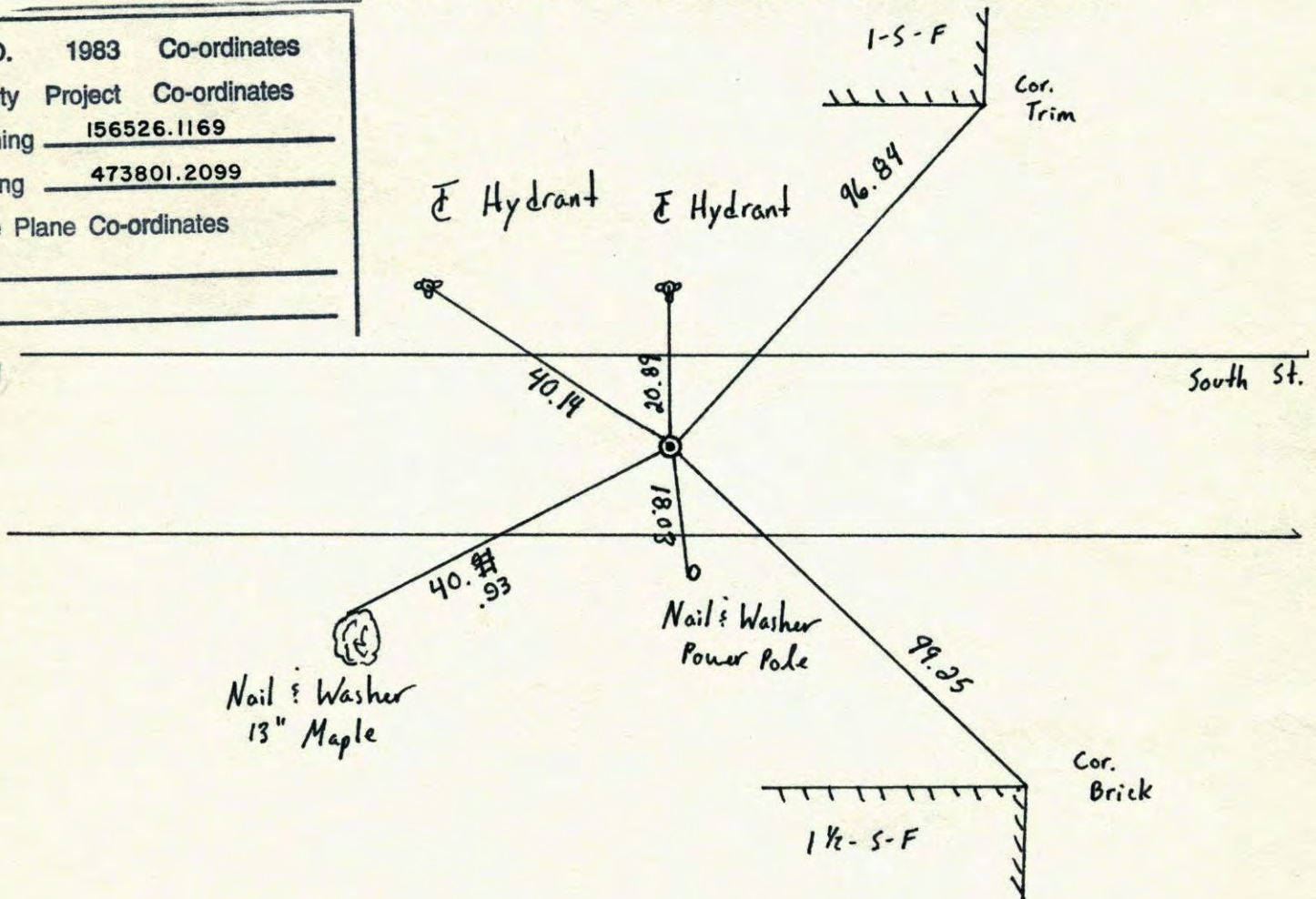
East 1/4 Corner of Sec. 7 Township 31 Range 24

I hereby certify that on the 11 day of August, 1960, I found the described corner which was evidenced by Concrete

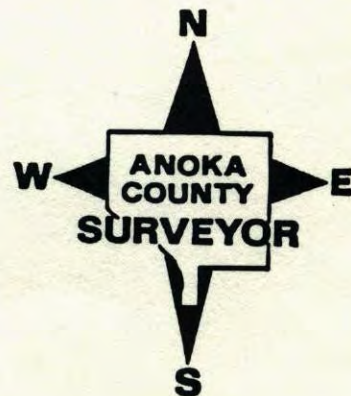
and I further certify that to perpetuate the location of said corner, I did, at the exact location thereof, place a permanent marker consisting of Cast Iron Monument

which reference or witness monuments are located in the manner following:

N.A.D.	1983	Co-ordinates
County	Project	Co-ordinates
Northing	<u>156526.1169</u>	
Easting	<u>473801.2099</u>	
State Plane	Co-ordinates	
Y	_____	
X	_____	

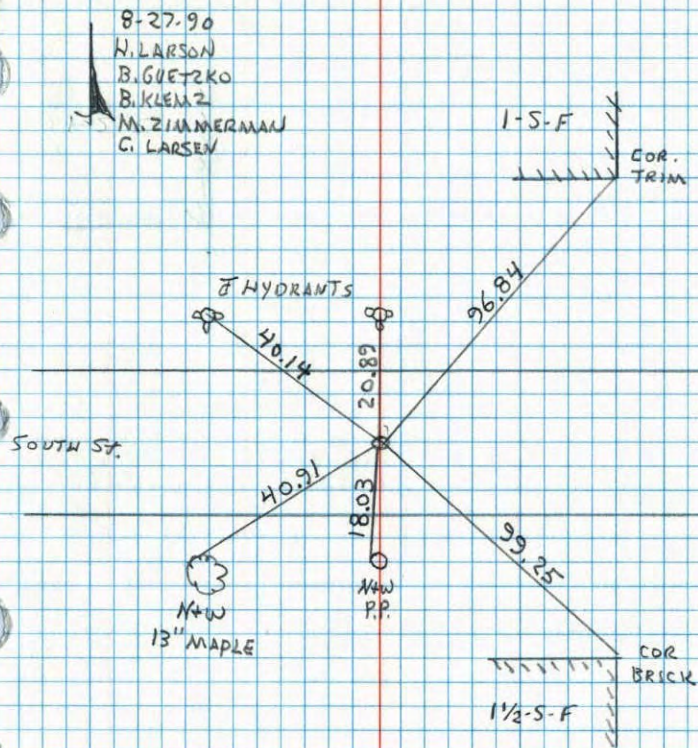


Revised date	Revised date	Revised date
<u>9-2-64</u>	<u>8-27-90</u>	
<u>7-3-74</u>	<u>8-17-94</u>	
<u>6-16-77</u>		
<u>6-30-80</u>		
<u>7-18-83</u>		
<u>12-23-83</u>		
<u>6-18-86</u>		



EAST 1/4 CORNER SECTION 7 T31 R24

SET CAST IRON MONUMENT IN PLACE OF
CONCRETE AFTER ROAD CONSTRUCTION



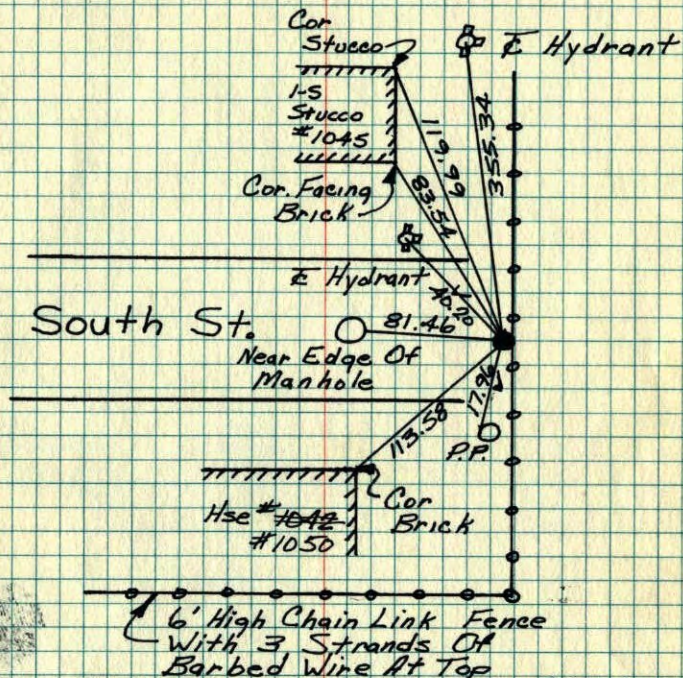
NO. 448

TELEPHONE

E 1/4 Cor. Sec 7-T31-R24

Concrete Monument Found From Anoka County
Ties Of 8/11/60

Concrete Monument Down 0.5' ± 0.2' West
Of Fence



Sept. 2, 1964
M.D. Anderson
J. Dunlap

TIE CHECK
JUNE 16, 1977
F. SANNEPUD
S. BRIEN
J. STEPHENS

TIE CHECK
6-30-80
B. STEPHENS
P. ROSS
P. HORNBY

Tie Check
July 3, 1974
R. Farmer
N. Dahl
D. Dahl

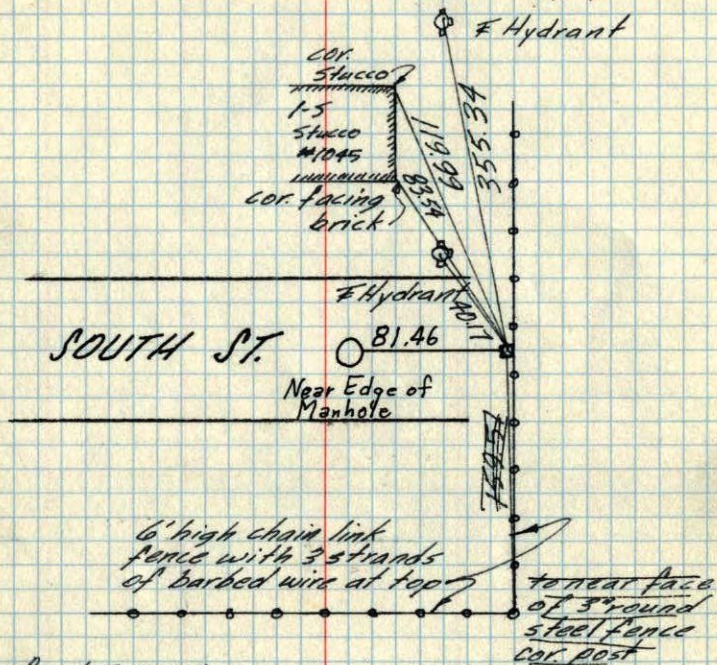
ROLAND W. ANDERSON COUNTY SURVEYOR ANOKA COUNTY, MINNESOTA

TEMPERATURE CORRECTED AND HORIZONTALLY TAPED MEASUREMENTS

E 1/4 Cor. Sec 7-T31-R24

Conc. mon. found from Anoka County
ties of 8/1/60

Conc. mon. down 0.5" 0.2' West of fence



Sept 2, 1964

M. D. Anderson
J. Dunlap

Tie Check
July 27, 1966
H. Larson
D. Potter
G. Reimer

Tie Check
July 23, 1970
D. Powell
R. Brien
B. Olson

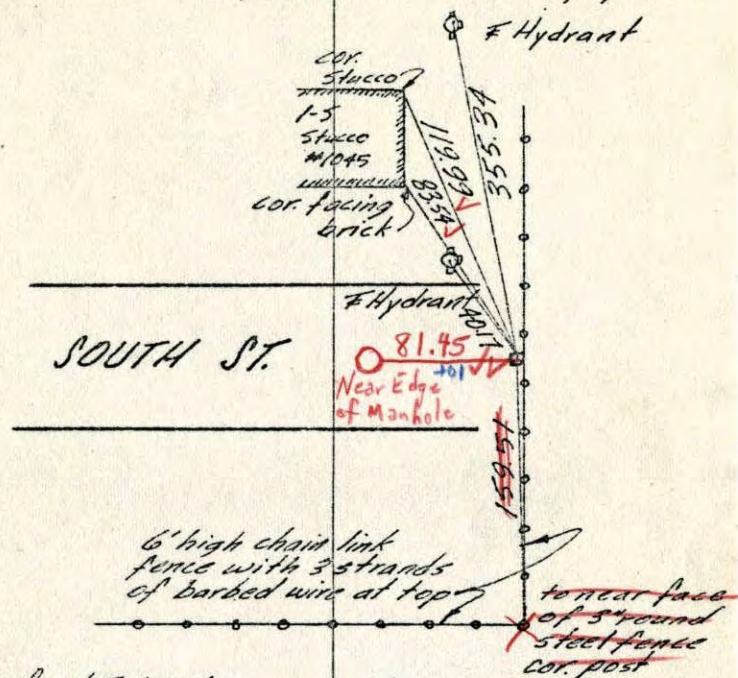
ROLAND W. ANDERSON
COUNTY SURVEYOR
ANOKA COUNTY, MINNESOTA

TEMPERATURE CORRECTED
AND HORIZONTALLY
TAPED MEASUREMENTS

E 1/4 Cor. Sec 7-T31-R24

Conc. mon. found from Anoka County
ties of 8/1/60

Conc. mon. ^{down 0.5"} flush 0.2' West of fence



Sept 2, 1964

M. D. Anderson
J. Dunlap

Tie Check
July 27, 1966
H. Larson
D. Potter
G. Reimer

7/23/70
#11-80°
D. Powell
R. Brien
B. Olson

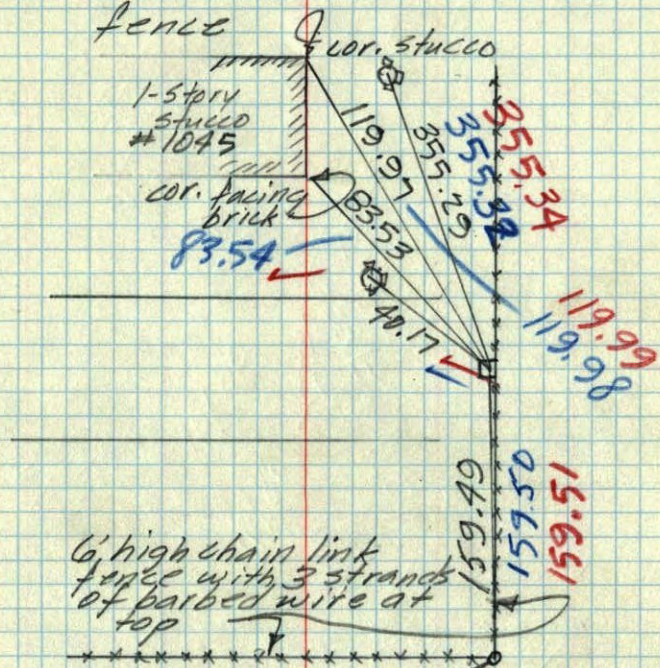
ROLAND W. ANDERSON
COUNTY SURVEYOR
ANOKA COUNTY, MINNESOTA

TEMPERATURE CORRECTED
AND HORIZONTALLY
TAPED MEASUREMENTS

E 1/4 Cor. Sec. 7, T. 31, R. 24

found Conc. mon. from ties
by Anoka county of Dulap

Conc. mon flush 602' W. of
fence



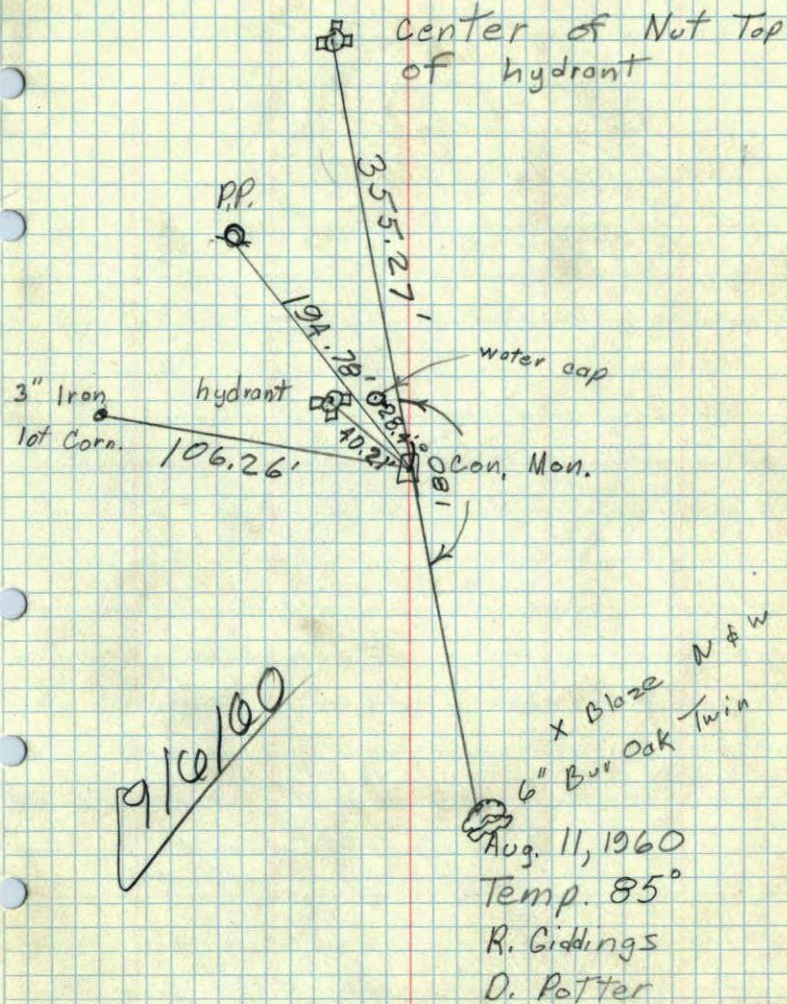
Sept. 2, 1964
M.D. Anderson
J. Dulap
Temp. 78°
Tape # 1

to near face of
3" round fence
corner

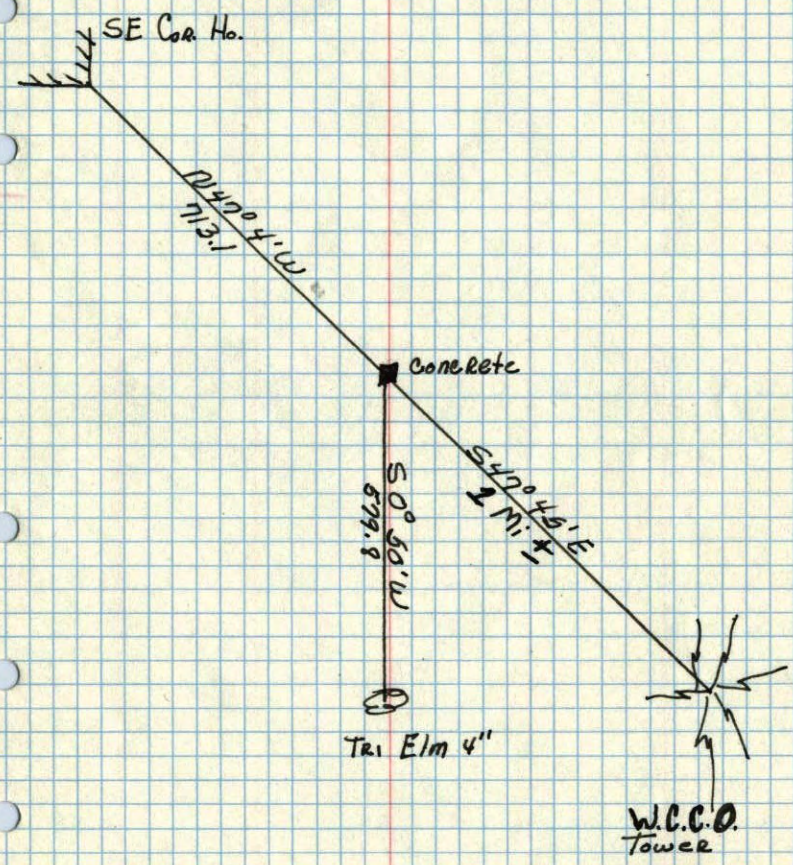
E 1/4 Cor. Sec. 7, T. 31, R. 24

50155.0 (Coon Rapids)

Con. Mon. Flush



W 1/4 corner of Sec. 9 T31N R24W
Concrete Mon. flush



June 1, 1943
Cartwright