

# CERTIFICATE OF LOCATION OF GOVERNMENT CORNER

County of Anoka

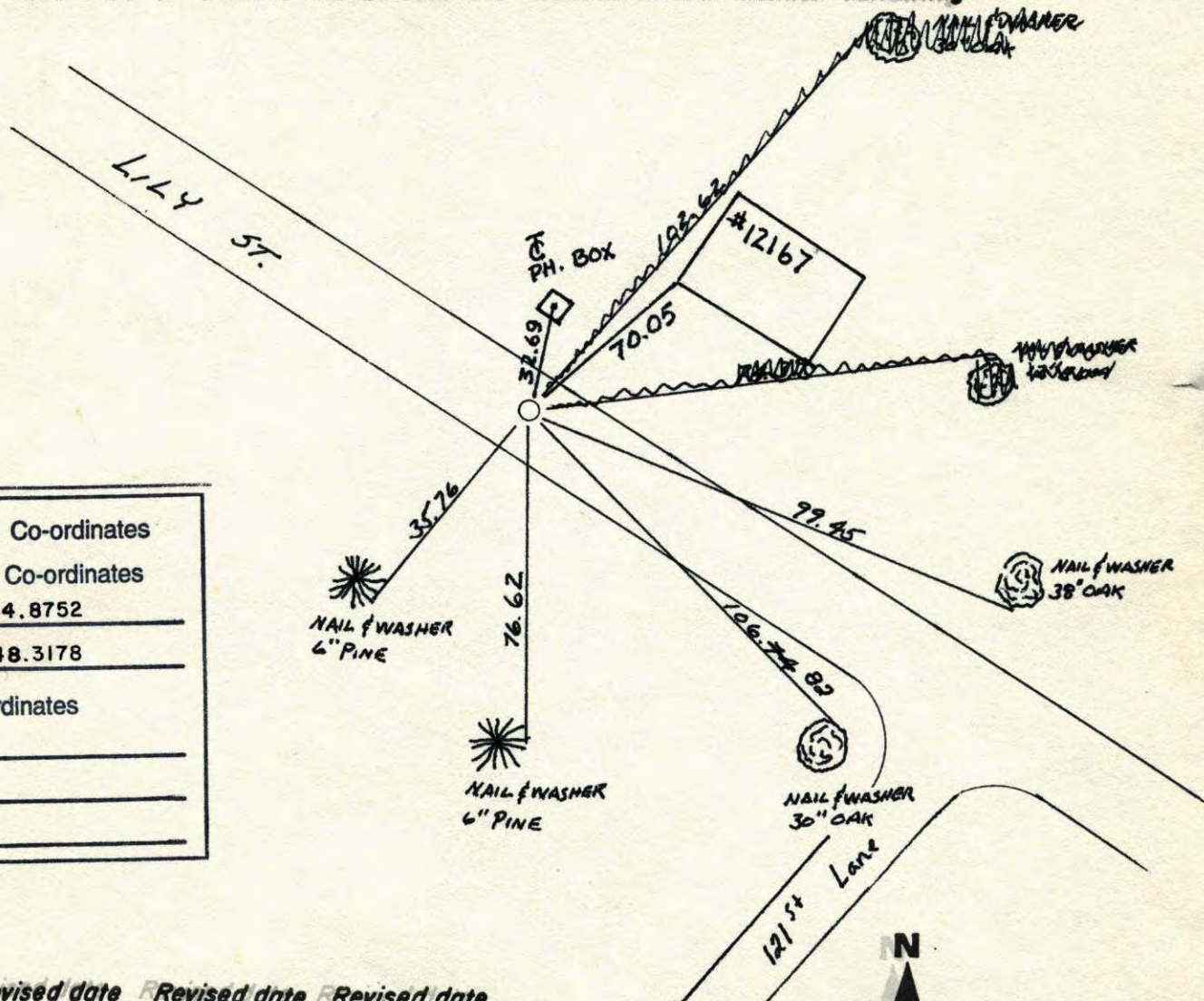
State of Minnesota

WEST 1/4 Corner of Sec. 9 Township 31 Range 24

I hereby certify that on the 12<sup>TH</sup> day of AUGUST, 1960, I found the described corner which was evidenced by CONCRETE

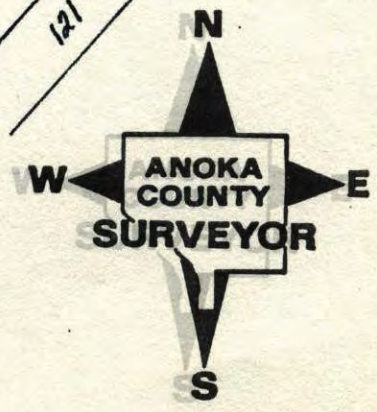
and I further certify that to perpetuate the location of said corner, I did, at the exact location thereof, place a permanent marker consisting of CAST IRON MONUMENT

which reference or witness monuments are located in the manner following:



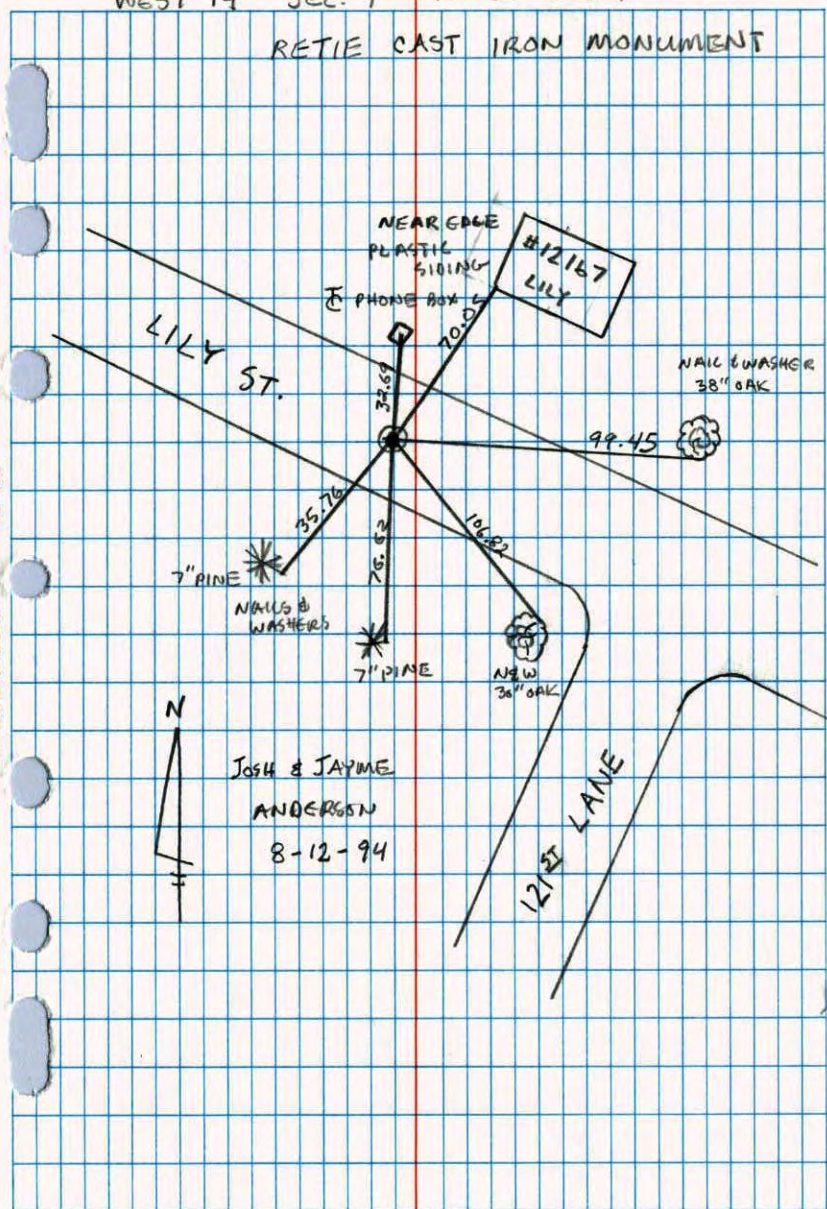
N.A.D.	1983	Co-ordinates
County Project	Co-ordinates	
Northing	<u>156534.8752</u>	
Easting	<u>479048.3178</u>	
State Plane Co-ordinates		
Y	_____	
X	_____	
Date	_____	

Revised date	Revised date	Revised date
<u>8-12-60</u>	<u>8-20-90</u>	
<u>7-23-70</u>	<u>8-12-94</u>	
<u>7-05-74</u>		
<u>6-20-77</u>		
<u>7-21-80</u>		
<u>6-20-86</u>		
<u>10-21-87</u>		



WEST 1/4 Sec. 9 T.W. 31 R. 24

RETIÉ CAST IRON MONUMENT

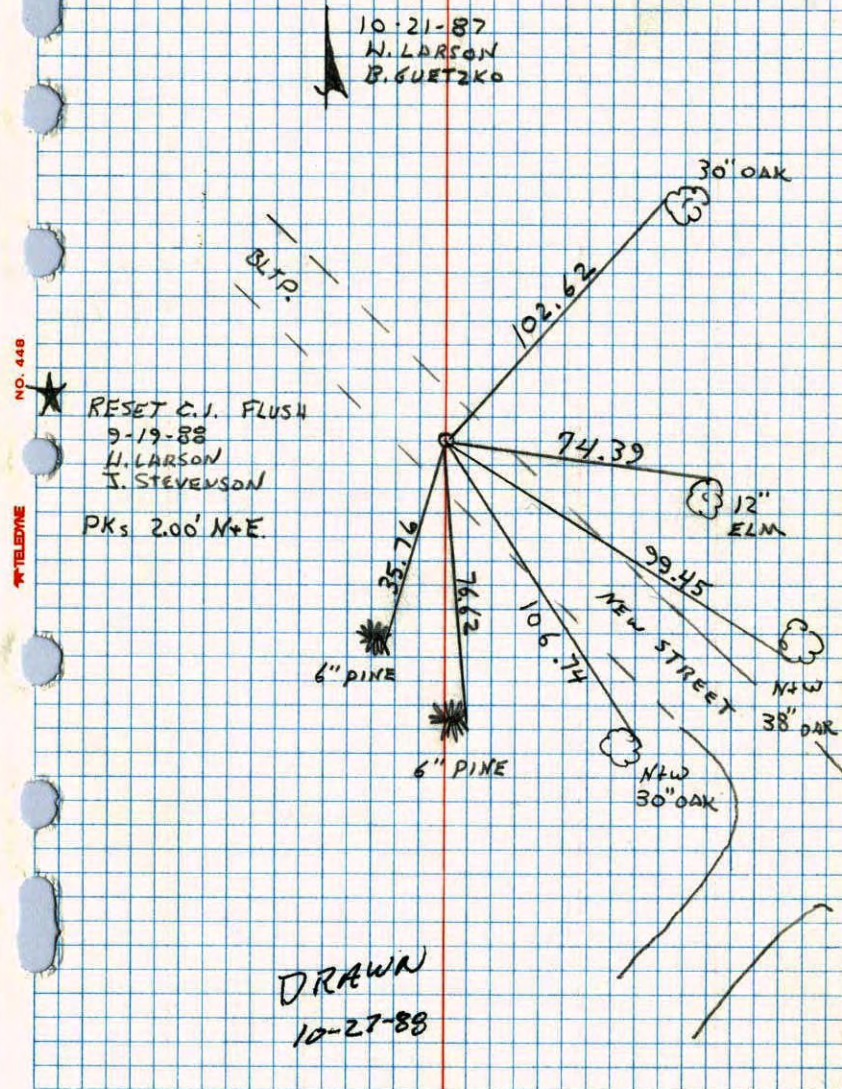


NO. 446

NATIONAL PAPERFAST

W 1/4 COR. SECTION 9 T31 R24

RETIÉ FOR CONSTRUCTION AND REMOVED



NO. 448

NATIONAL PAPERFAST

340  
W 1/4 Cor. Sec. 9-T31-R24

Conc. Mon., Flush Iron Pipe on North Side

Retie 7/23/70

8/12/60

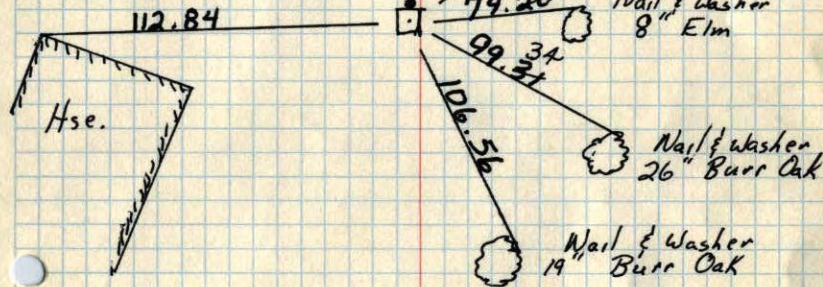
D. Powell  
R. Brien  
R. Olson

Potter  
Giddings

SET CAST IRON MON.  
FLUSH: WARNING SIGN  
1" NORTH

Tie Check  
7/5/74  
R. FARMER  
N. D.  
D. D.

Cor. of brick siting



TIE CHECK  
6-30-80  
B. STEPHENS  
P. ROSS  
P. HORNBY

TIE CHECK  
JUNE 20, 1977  
R. SPILBERG  
S. BRIEN  
J. SPEDHENS

ROLAND W. ANDERSON  
COUNTY SURVEYOR  
ANOKA COUNTY, MINNESOTA

TEMPERATURE CORRECTED  
AND HORIZONTALLY  
TAPED MEASUREMENTS

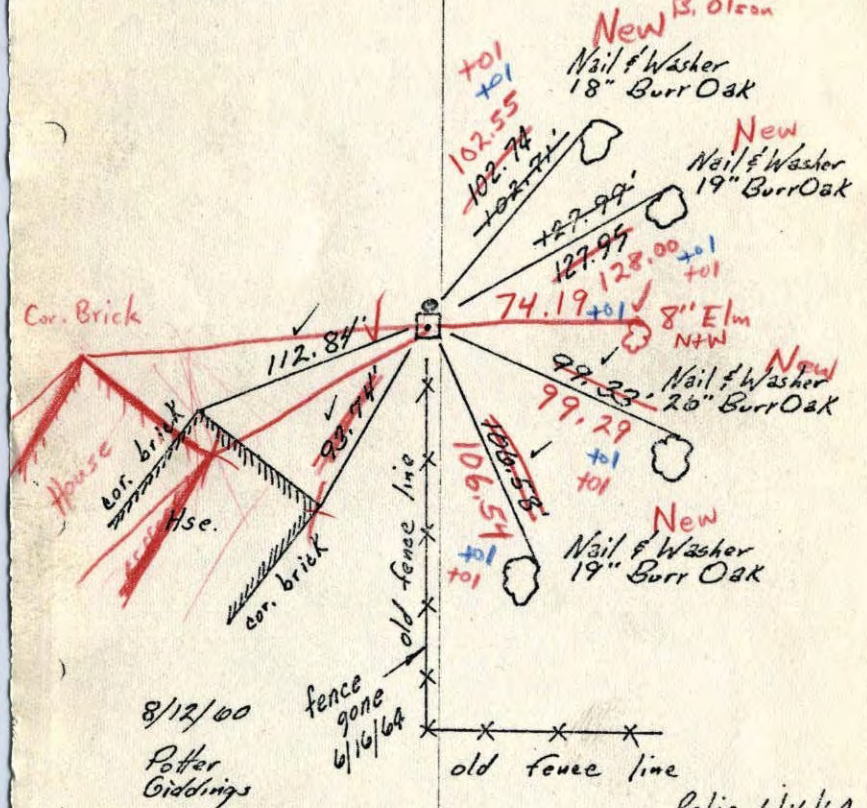
34  
W 1/4 Cor. Sec 9-T31-R24

Conc. Mon. Flush

Iron Pipe on North

Tie Check  
July 14, 1966  
H. Larson  
D. Potter  
G. Reimer

7/23/70  
#11-80°  
D. Powell  
R. Brien  
R. Olson



8/12/00  
Potter  
Giddings

Retie 6/16/64

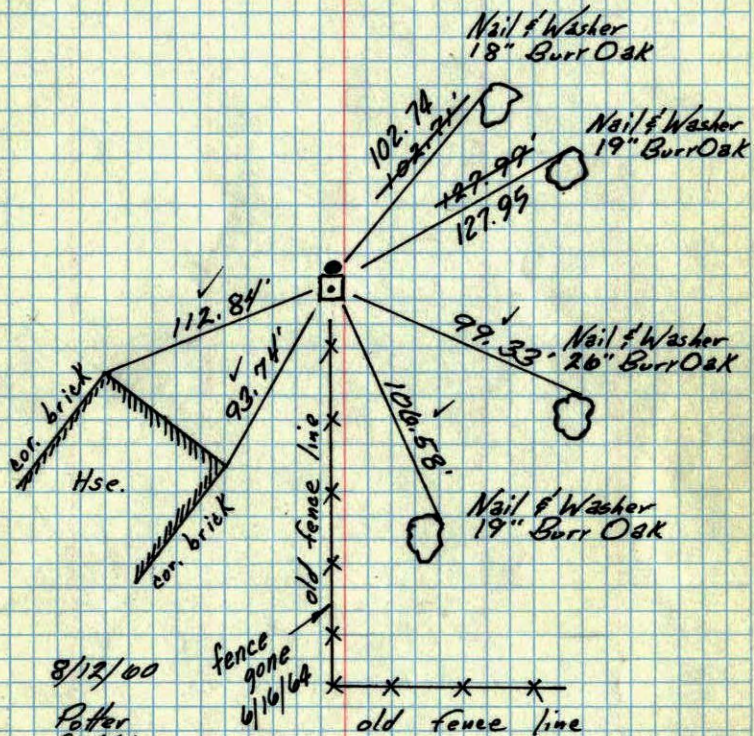
TEMPERATURE CORRECTED  
AND HORIZONTALLY  
TAPED MEASUREMENTS

M. D. Anderson  
R. Carlson  
ROLAND W. ANDERSON  
COUNTY SURVEYOR  
ANOKA COUNTY, MINNESOTA

W 1/4 Cor. Sec 9 - T31 - R24

Conc. Man. Flush  
Iron Pipe on North

Tie Check  
July 14, 1966  
H. Larson  
D. Potter  
G. Reimer



8/12/60  
Potter  
Giddings

fence gone  
6/16/64

old fence line

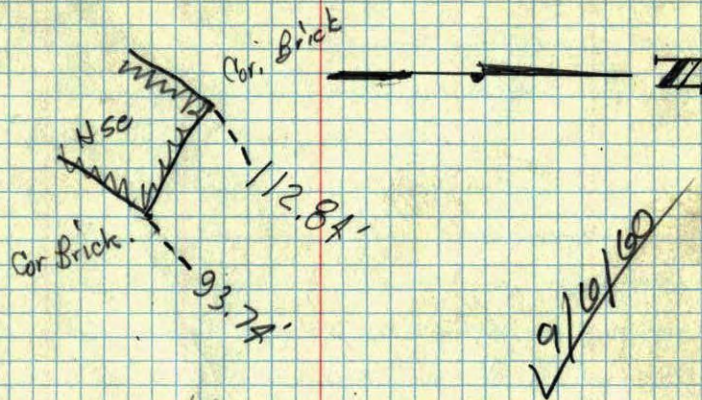
Retie 6/16/64

TEMPERATURE CORRECTED  
AND HORIZONTALLY  
TAPED MEASUREMENTS

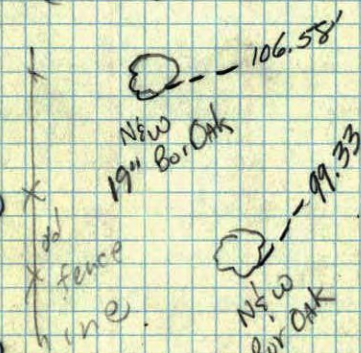
M. D. Anderson  
R. Carlson  
ROLAND W. ANDERSON  
COUNTY SURVEYOR  
ANOKA COUNTY, MINNESOTA

W 1/4 9 C.R.

Conc. Man. Flush



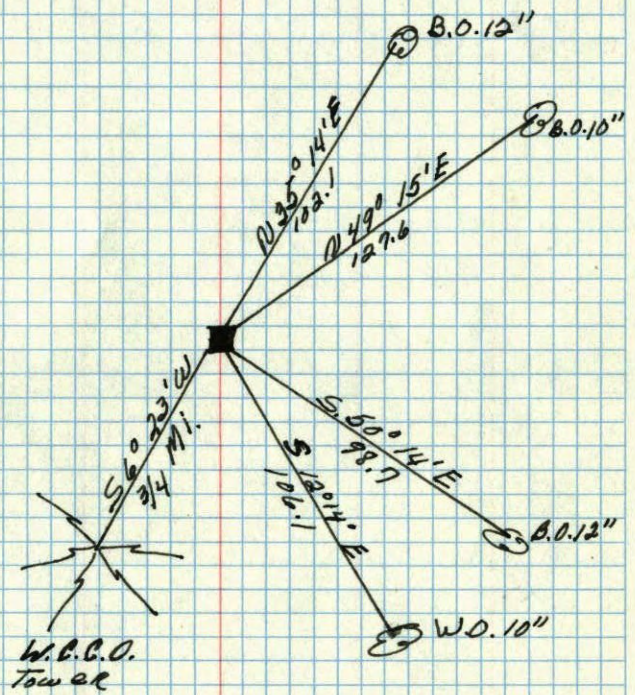
old fence line



Potter  
Giddings

8/12/60

W 1/4 corner of Section 9 T. 31. R. 24  
Concrete board



May 26, 1944  
C. A. Wright