

CERTIFICATE OF LOCATION OF GOVERNMENT CORNER

County of Anoka

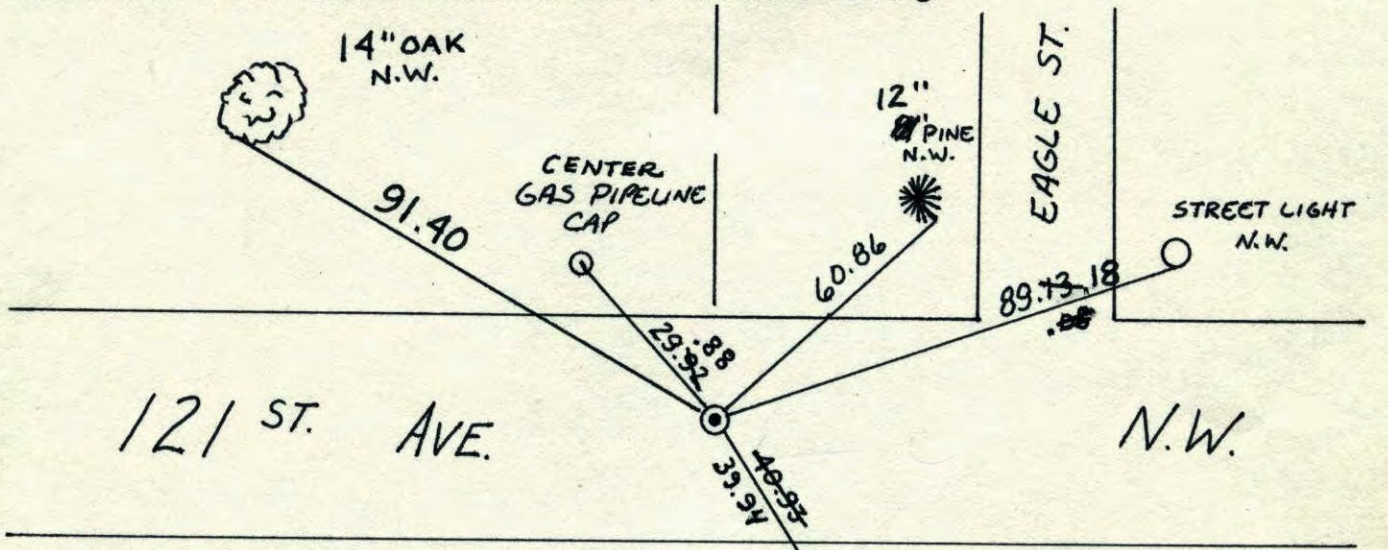
State of Minnesota

WEST QTR. Corner of Sec. 11 Township 31 Range 24

I hereby certify that on the 26 day of MAY, 19 73, I found the described corner which was evidenced by CONCRETE

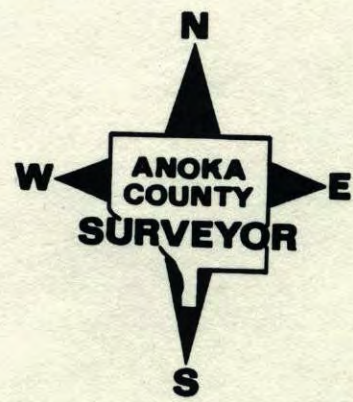
and I further certify that to perpetuate the location of said corner, I did, at the exact location thereof, place a permanent marker consisting of CAST IRON MON. ON CENTERLINE

which reference or witness monuments are located in the manner following:



N.A.D.	1983	Co-ordinates
County	Project	Co-ordinates
Northing	<u>156430.3562</u>	
Easting	<u>489660.6358</u>	
State Plane Co-ordinates		
Y	_____	
X	_____	
Date	_____	

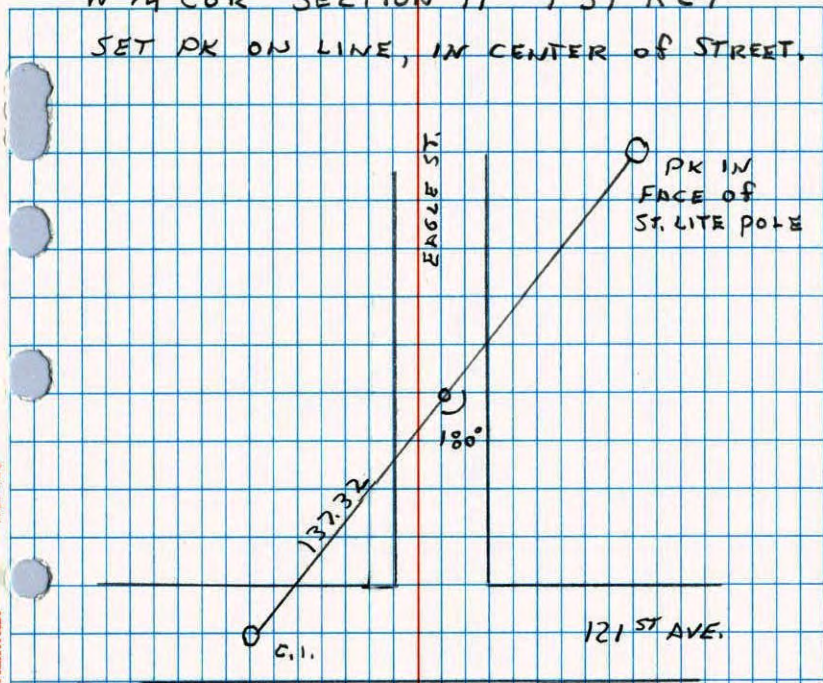
Revised date	Revised date	Revised date
<u>8-8-94</u>		
<u>1-10-95</u>		
<u>10-13-97 WL</u>		
<u>8-10-01</u>		



CONSTRUCTION TIE

W 1/4 COR SECTION 11 T31 R24

SET PK ON LINE, IN CENTER OF STREET.



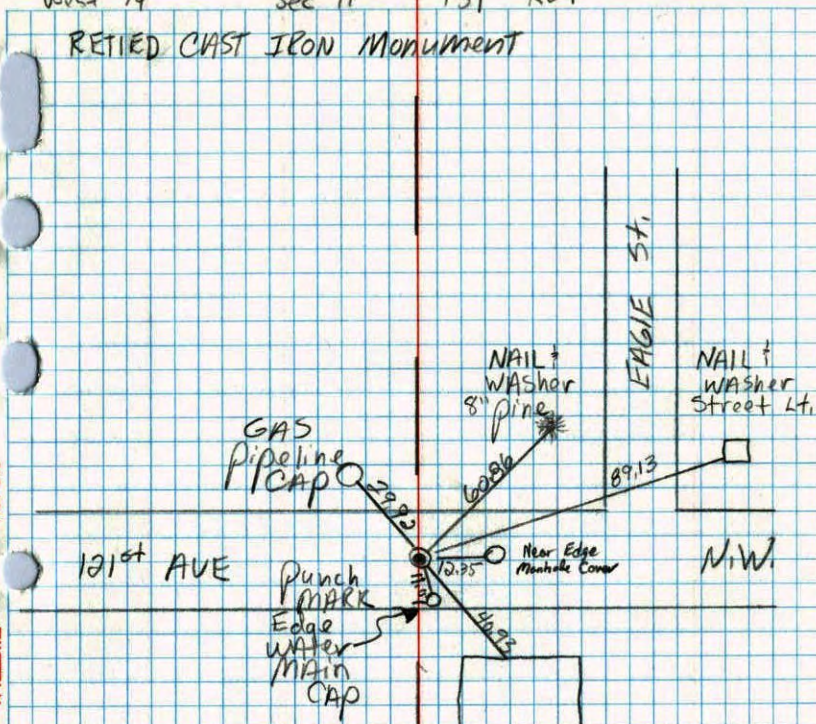
7-29-97
 W. LARSON
 B. KLEMM
 S. SINMER

NO. 446

NATIONAL INSTRUMENT

West 1/4 Sec 11 T31 R24

RETIRED CAST IRON MONUMENT



8-13-90
 C. LARSEN
 M. Zimmermann

NO. 448

TELEPHONE

W 1/4 CORNER SECTION 11 - T31 - R24

REPLACED CONCRETE MONUMENT WITH CAST IRON MONUMENT

26 MAY 73

M.O. ANDERSON

P. BERTLESON

M. JENSON

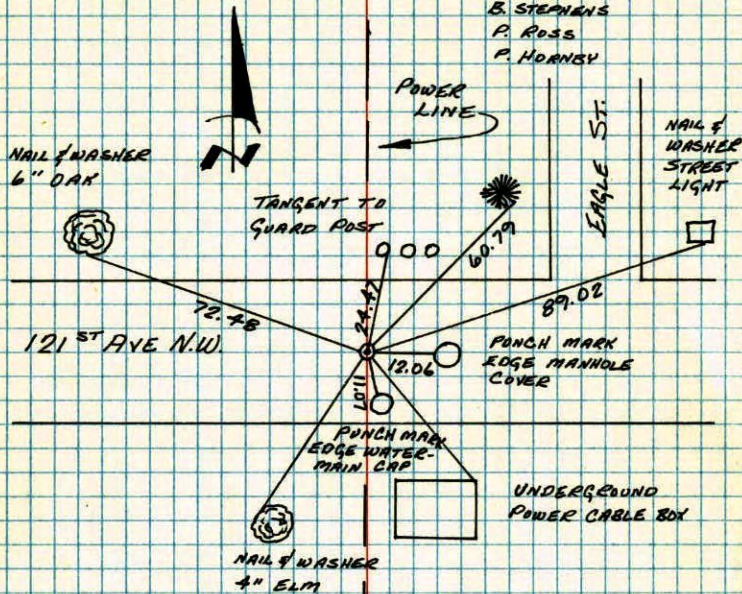
ALL OLD TIES GONE. SET NEW TIES

26 JUN 80

B. STEPHENS

P. ROSS

P. HOANBY



TEMPERATURE CORRECTED
AND HORIZONTALLY
TAPED MEASUREMENTS

ROLAND W. ANDERSON
COUNTY SURVEYOR
ANOKA COUNTY, MINNESOTA

W 1/4 Cor Sec. 11 T-31 R-24

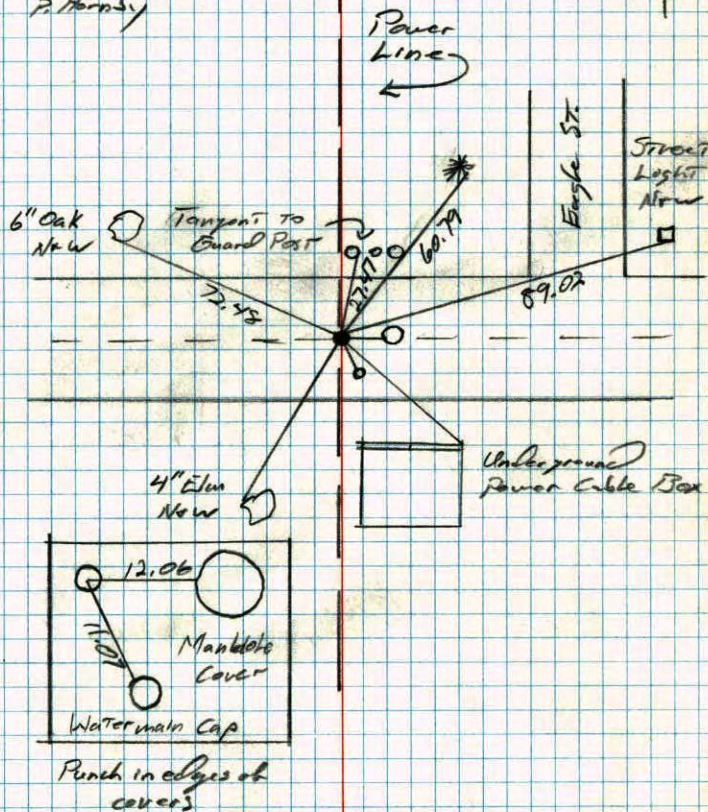
All old ties gone. Set new ties.

6-24-80 215

B. Stephens

P. Ross

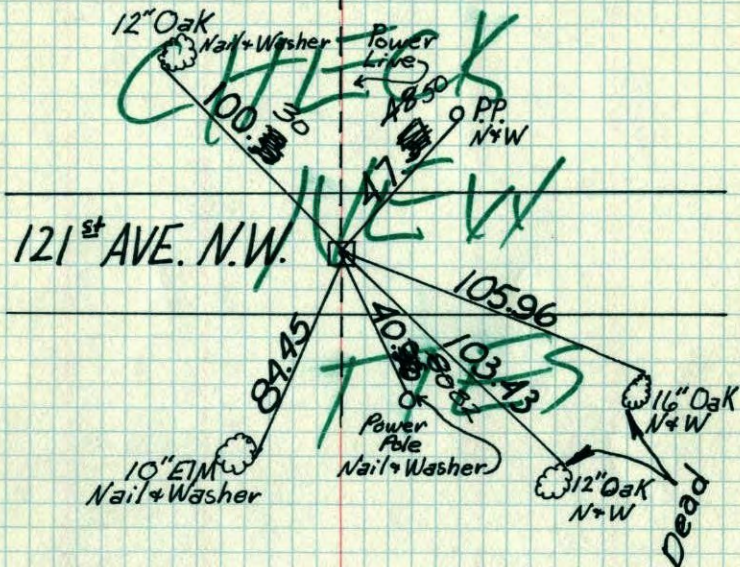
P. Hoanby



Punch in edges of covers

W $\frac{1}{4}$ Cor. Sec. 11-T31-R24

Replaced Concrete Monument with Cast Iron Monument.



Cast Iron Monument
in place 5/26/73
M. D. Anderson
P. Bertleson
M. A. Jensen

Tie Check
July 8, 1974
R. Farmer

TIE CHECK
JUNE 20, 1977
R. SANWEGUD
S. BRIEN
J. STEPHENS

ROLAND W. ANDERSON
COUNTY SURVEYOR
ANOKA COUNTY, MINNESOTA

TEMPERATURE CORRECTED
AND HORIZONTALLY
TAPED MEASUREMENTS

W $\frac{1}{4}$ Cor. Sec. 11-T31-R24

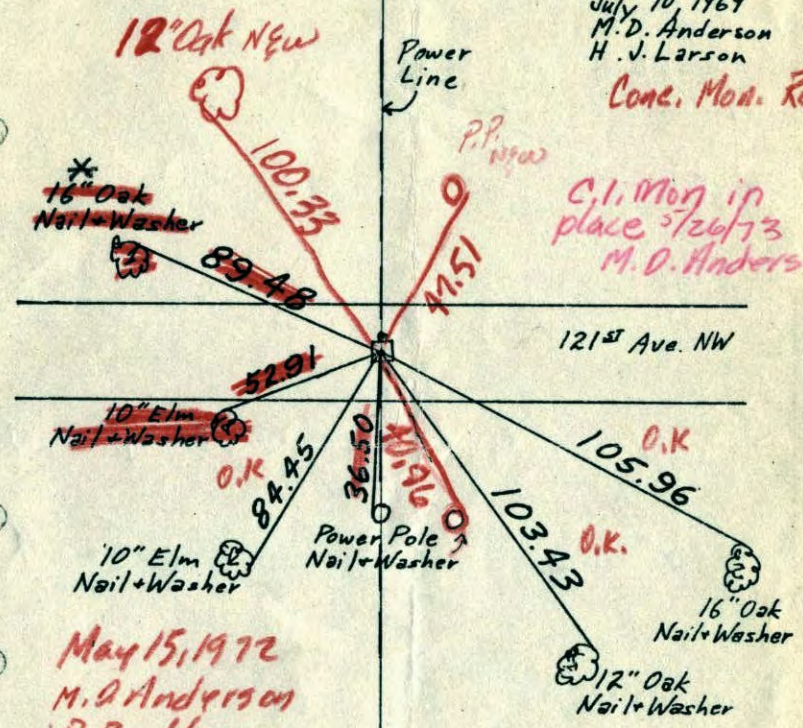
Found Concrete Monument down 0.5' undisturbed.

All previous tie trees removed but located
Concrete from remaining stumps + one tie tree
to NW (marked *). $\frac{1}{2}$ " Pinned Iron Pipe on N. side.

July 10, 1969
M. D. Anderson
H. J. Larson

Conc. Mon. Removed

C.I. Mon. in
place 5/26/73
M. D. Anderson



May 15, 1972
M. D. Anderson
P. Bertleson
M. Jensen
temp. 65°
tape # 11

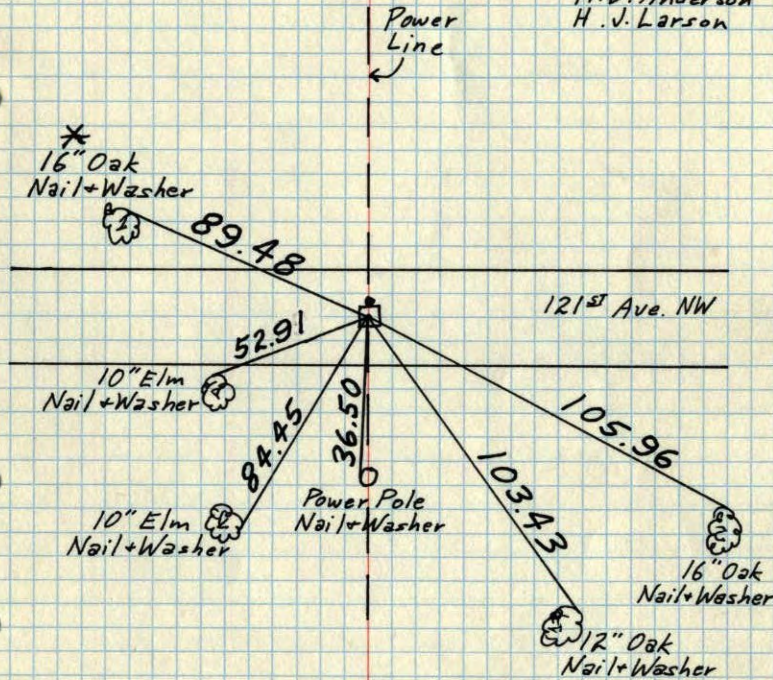
TEMPERATURE CORRECTED
AND HORIZONTALLY
TAPED MEASUREMENTS

ROLAND W. ANDERSON
COUNTY SURVEYOR
ANOKA COUNTY, MINNESOTA

W 1/4 Cor. Sec. 11-T31-R24

Found Concrete Monument down 0.5'± undisturbed.
 All previous tie trees removed but located
 Concrete from remaining stumps + one tie tree
 to NW (marked *). 1/2" Pinched Iron Pipe on N. side.

July 10 1969
 M.D. Anderson
 H. J. Larson

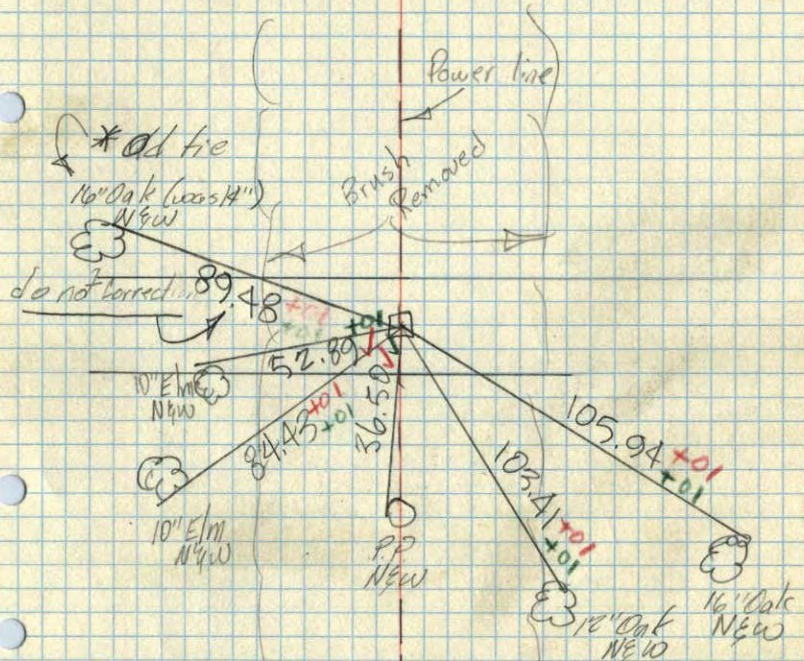


TEMPERATURE CORRECTED
 AND HORIZONTALLY
 TAPED MEASUREMENTS

ROLAND W. ANDERSON
 COUNTY SURVEYOR
 ANOKA COUNTY, MINNESOTA

W 1/4 Cor. Sec. 11-T31-R24

found Conc. Mon. down 1/2'± undisturbed
 all previous tie trees removed but
 located Conc. from remaining stumps
 and one tie to NW (marked *)
 1/2" pinched iron pipe on N. face



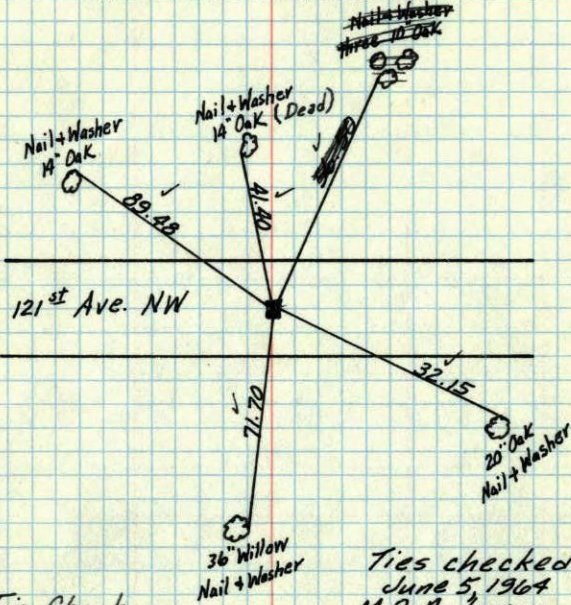
July 19 1969
 M.D. Anderson
 H. J. Larson

d = mp. 180° ✓
 tape # 6 ✓

W 1/4 Corner Sec. 11 T31 R24

Con. Mon. down 7"

Pinched Iron on N. side down 2"



Tie Check
 July 13, 1966
 H. Larson
 D. Potter

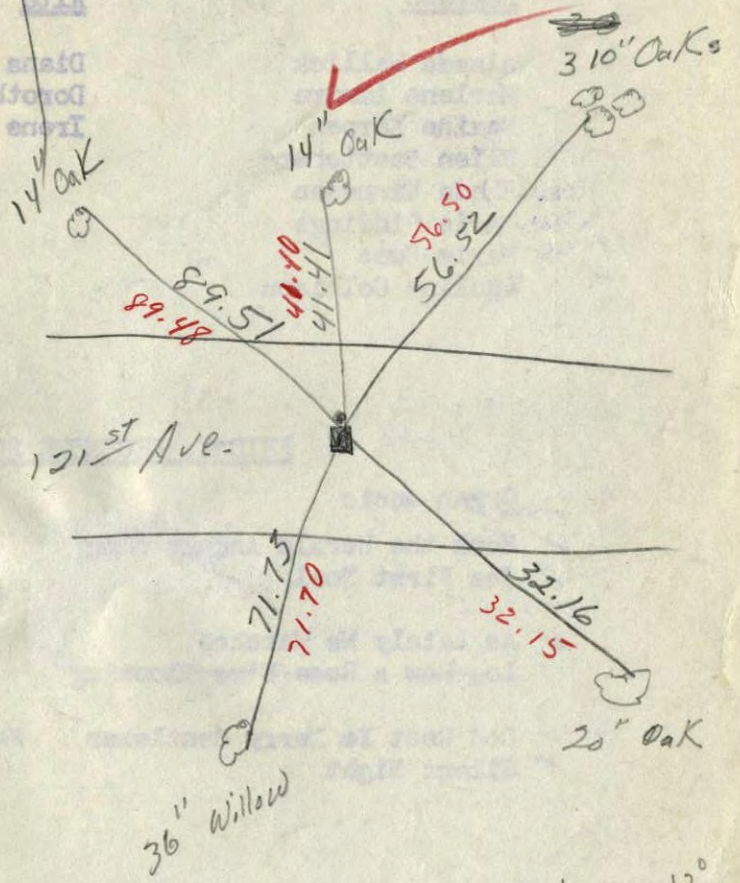
Ties checked
 June 5, 1964
 M.D. Anderson
 R. Carlson
 (All tie good)

TEMPERATURE CORRECTED
 AND HORIZONTALLY
 TAPED MEASUREMENTS

Feb. 26, 1960

ROLAND W. ANDERSON
 COUNTY SURVEYOR
 ANOKA COUNTY, MINNESOTA

W 1/4 Cor. Sec. 11 T31 R24
 Con. Mon down 7"
 Pinched Iron on N. side
 down 2"



$$\frac{56.52}{100} \times \frac{x}{.0364}$$

temp. 12°
 2/18/60

W^{1/4} corner of Sec. 11 T. 31 R. 24

Concrete Monument

Retied By
Mindee Eng Co.
July 1957

