

CERTIFICATE OF LOCATION OF GOVERNMENT CORNER

County of Anoka

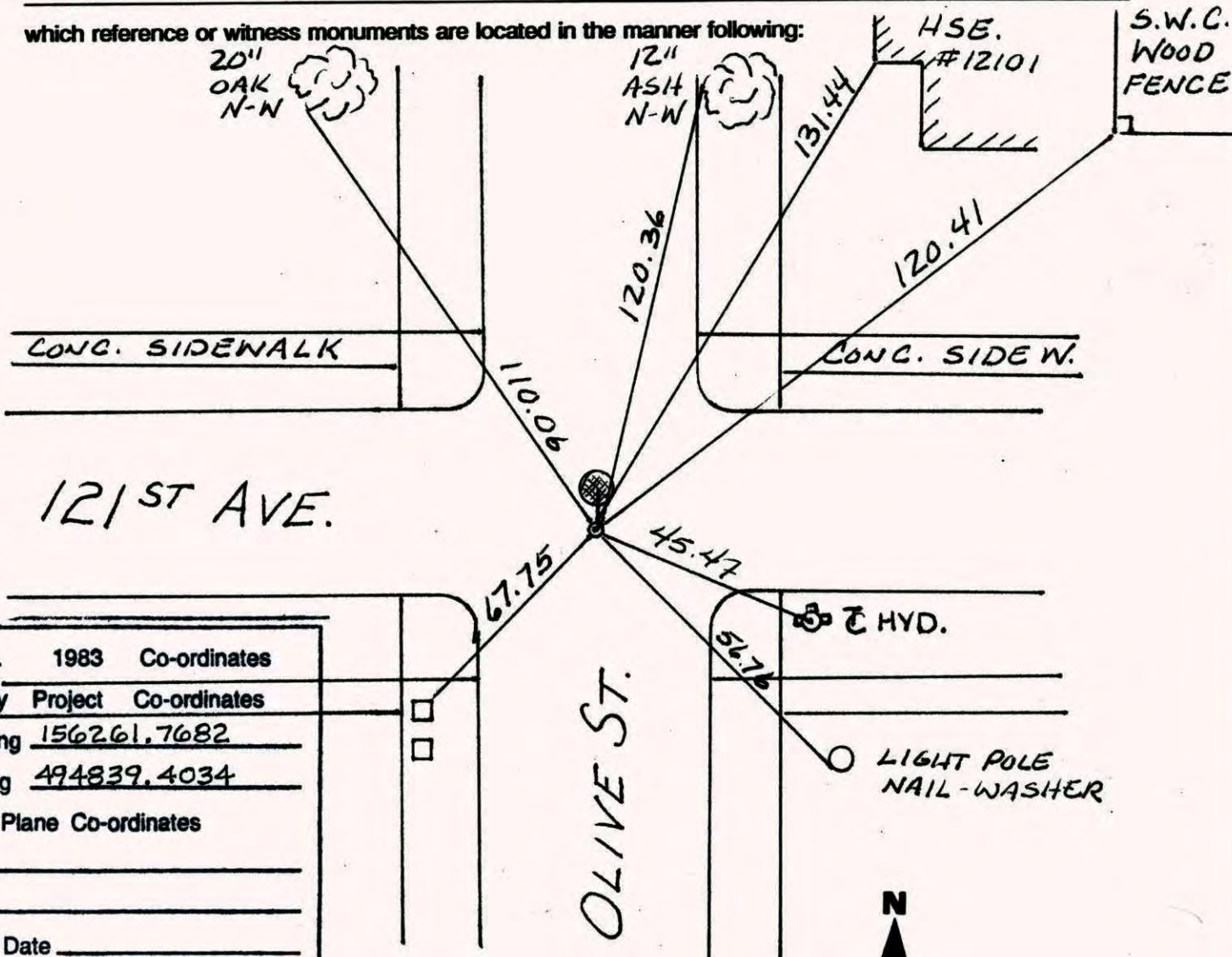
State of Minnesota

EAST 1/4 Corner of Sec. 11 Township 31 Range 24

I hereby certify that on the 22 day of JULY, 1960, I found the described corner which was evidenced by CONCRETE MONUMENT

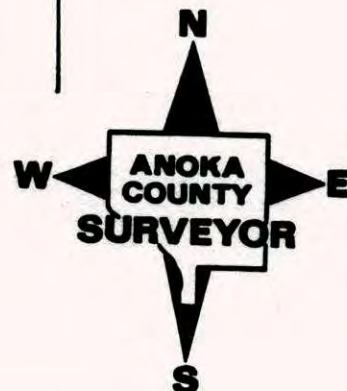
and I further certify that to perpetuate the location of said corner, I did, at the exact location thereof, place a permanent marker consisting of CAST IRON MONUMENT

which reference or witness monuments are located in the manner following:



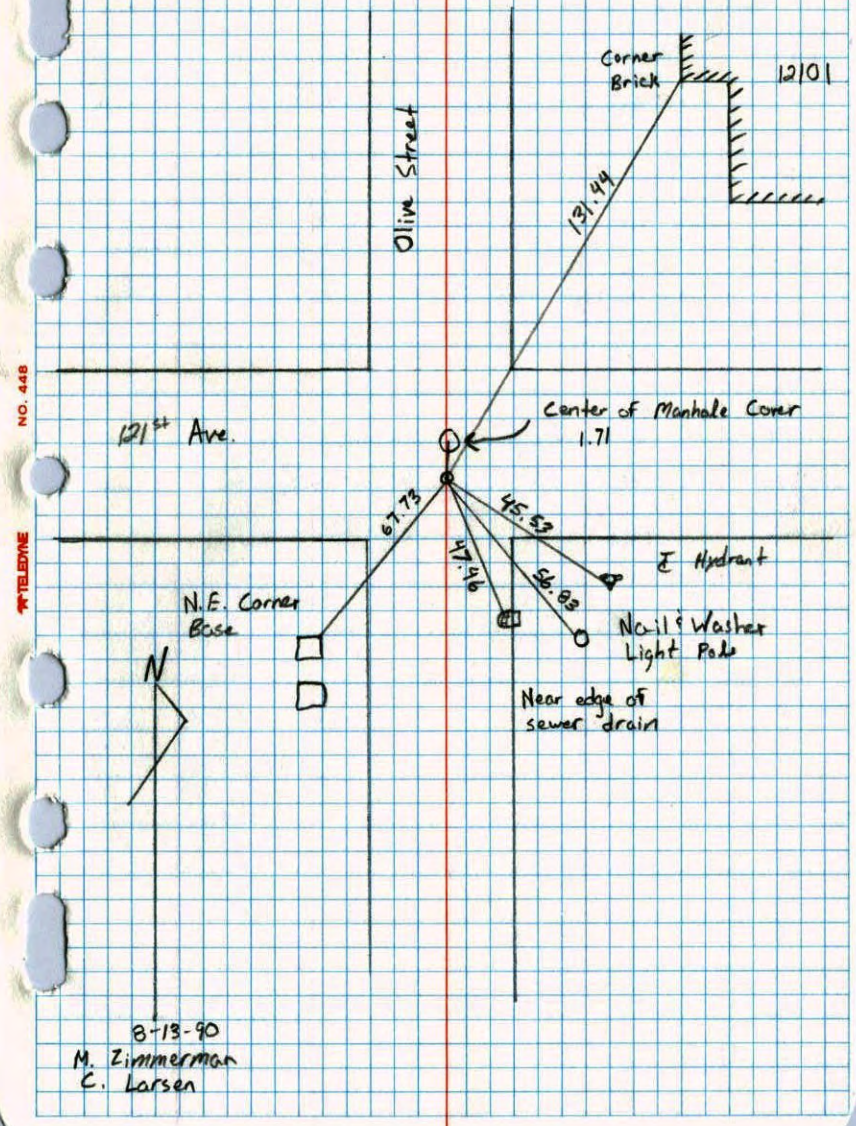
N.A.D.	1983	Co-ordinates
County	Project	Co-ordinates
Northing	<u>156261.7682</u>	
Easting	<u>494839.4034</u>	
State Plane Co-ordinates		
Y	_____	
X	_____	
Date	_____	

Revised date	Revised date	Revised date
<u>8-18-90</u>		
<u>8-8-94</u>		
<u>9-19-05</u>		



East 1/4 Corner Sec. 11 T 31 R 24

Retired Cast Iron Monument



NO. 448 TELEPHONE

8-13-90
M. Zimmerman
C. Larsen

CERTIFICATE OF LOCATION OF GOVERNMENT CORNER

County of Anoka

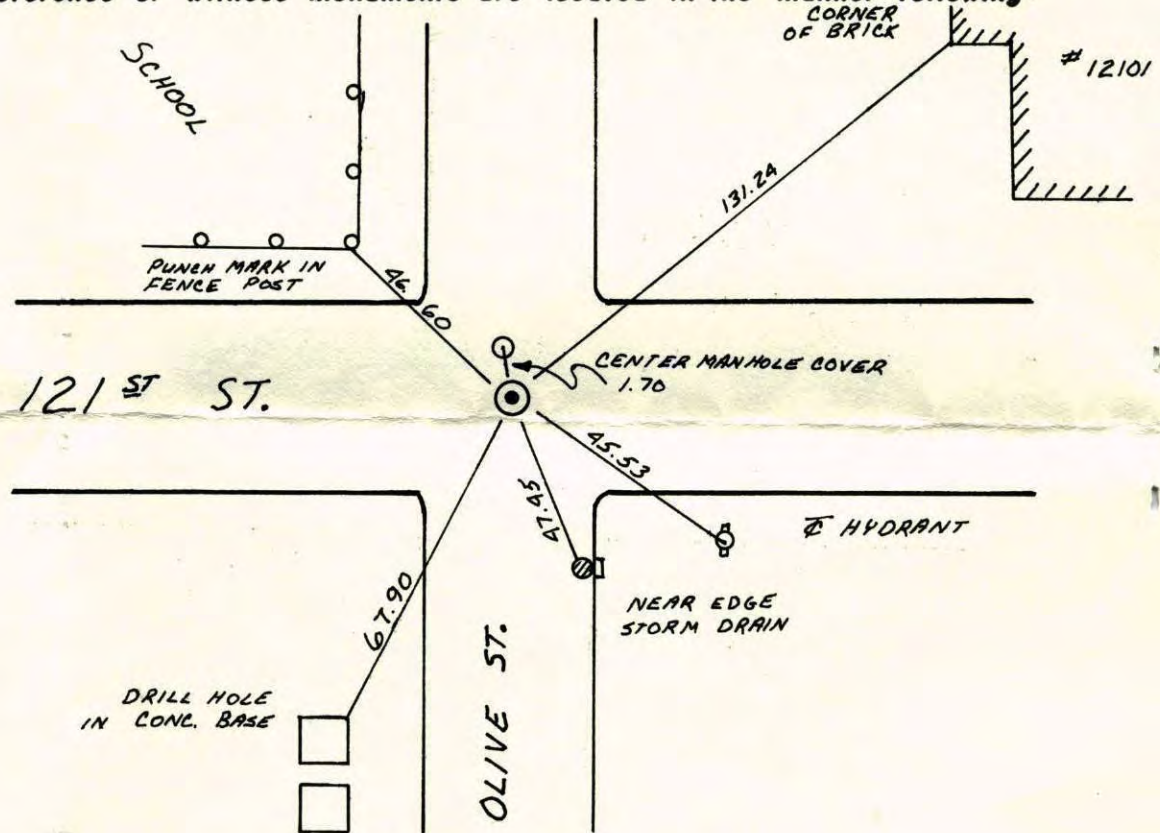
State of Minnesota

EAST ONE QUARTER Corner of Sec. 11 Township 31 Range 24

I hereby certify that on the _____ day of _____, 19____, I found the described corner which was evidenced by _____

and I further certify that to perpetuate the location of said corner, I did, at the exact location thereof, place a permanent marker consisting of CAST IRON MONUMENT

which reference or witness monuments are located in the manner following:



Revised date

8-19-83
REDRAWN
12-29-83

By

P.R. J.B. J.V.
R. KREUSER

Minnesota State Plane Coordinates
South Zone

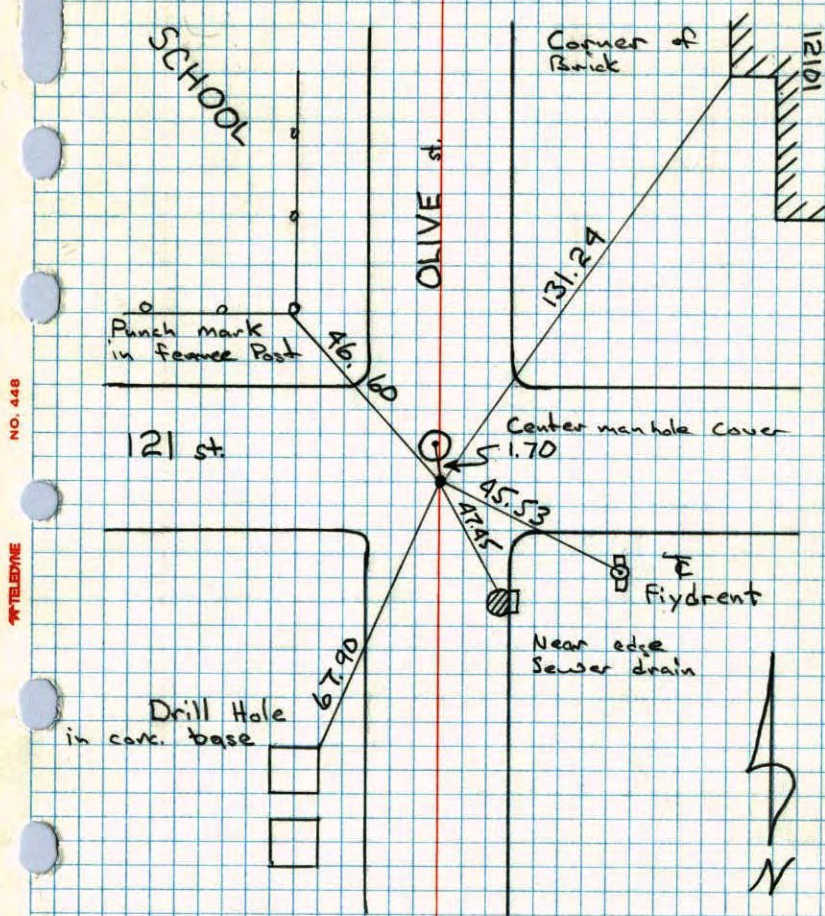
Y _____ X _____

County Surveyor

Date

Registered Land Surveyor No. _____

E 1/4 Cor. Sec. 11 T-31 R-24

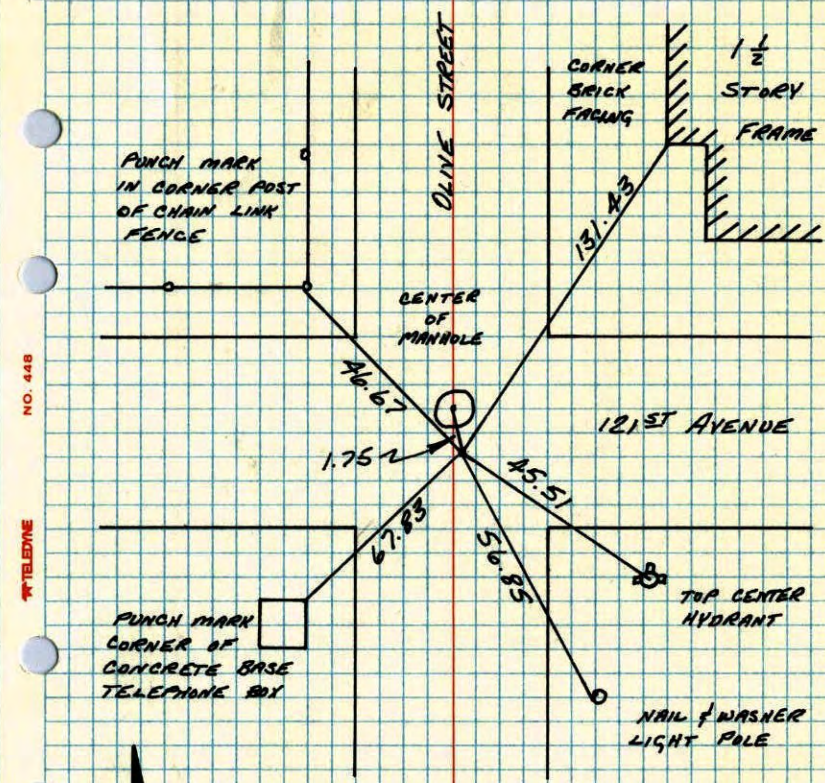


Set CI in place of PK. Set P.K.s 200 E+S

Tape #6 8-19-83
 P. Ross
 J. Baier
 J. Vothin

E 1/4 CORNER SECTION 11-T31-R24

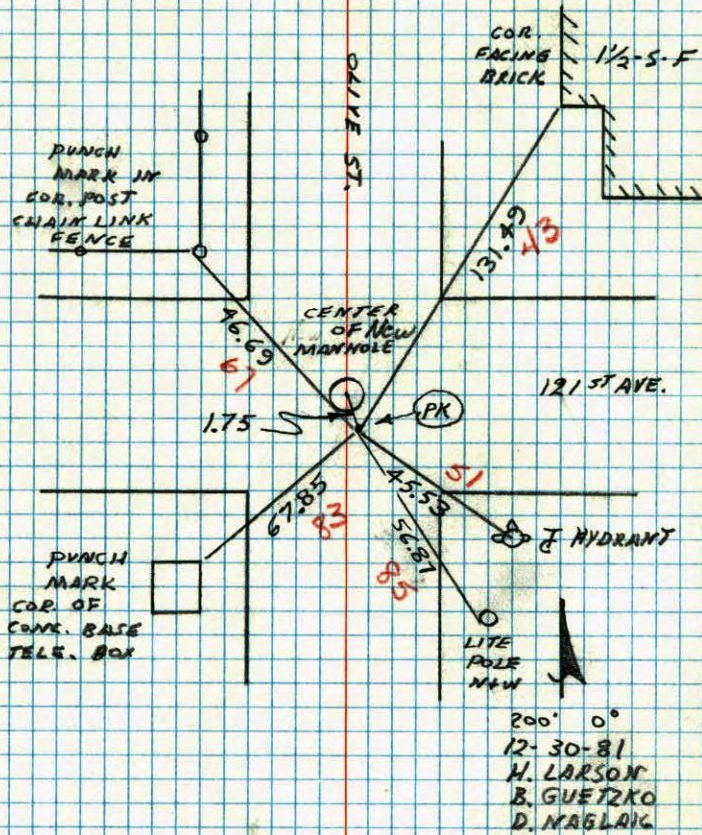
RESET PK FROM ONE TIE AND TRAVERSE TO NORTH AND SOUTH.



12-30-81
 H. LARSON
 S. GUETZKO
 D. HAGLAN

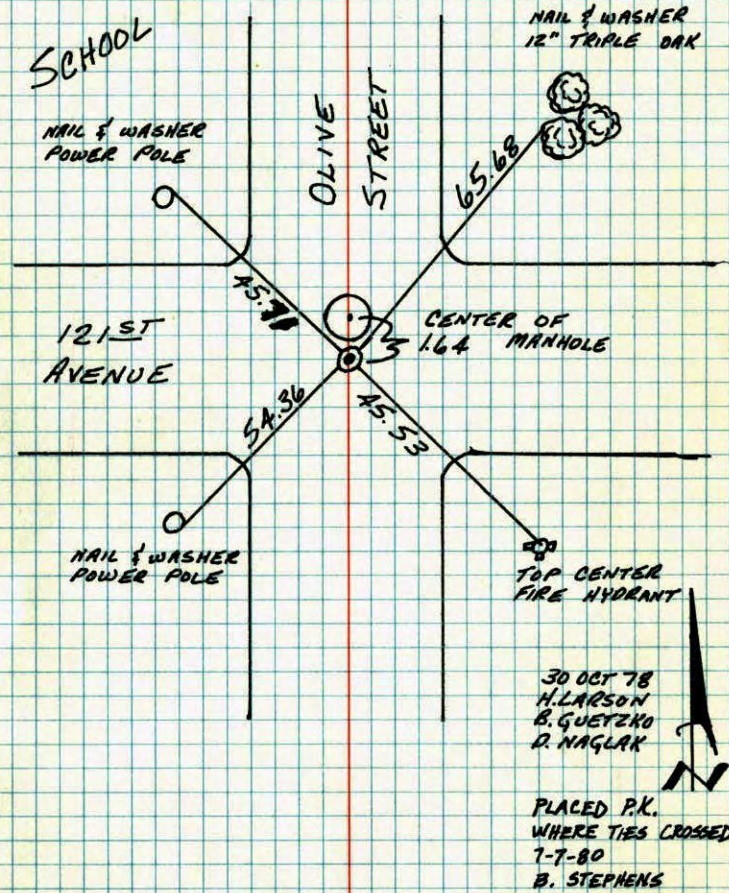
E 1/4 CORNER SECTION 11 T31 R24

RESET PK FROM ONE TIE AND TRAVERSE TO NORTH AND SOUTH



E 1/4 COR. SECTION 11-T31-R24

RESET CAST IRON MONUMENT BEFORE BLACKTOP CONSTRUCTION. CAST IRON FLUSH.

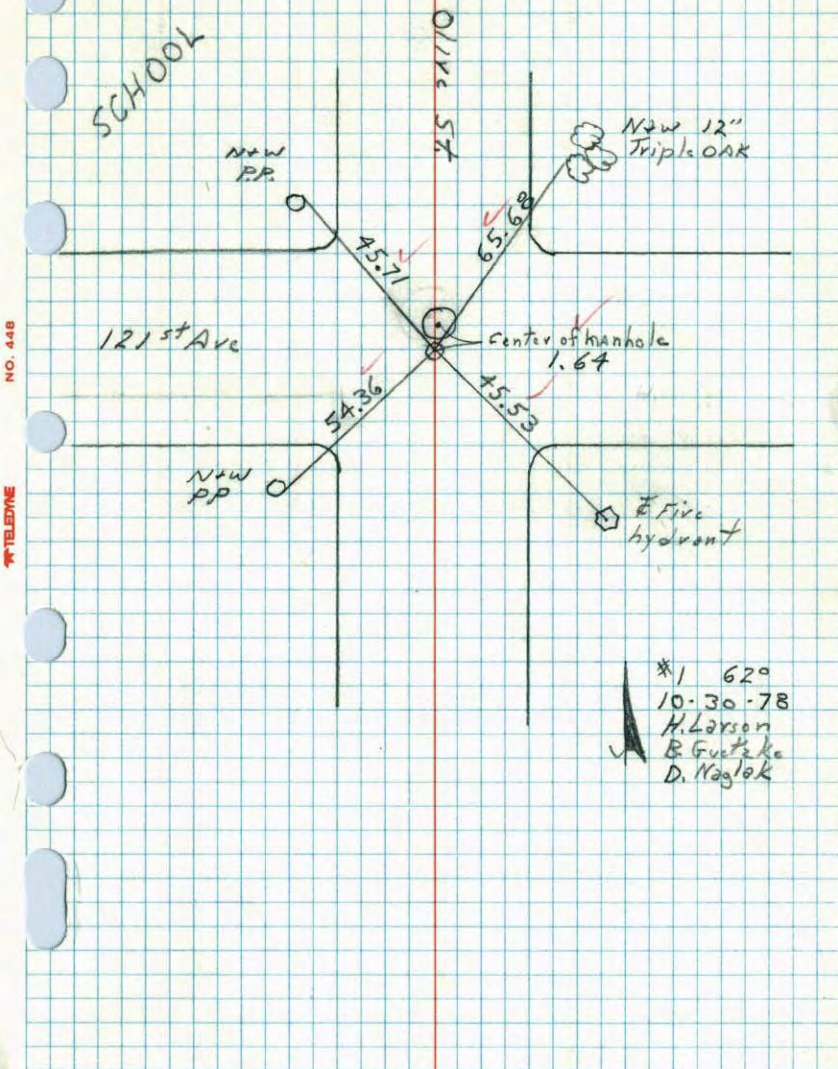


TEMPERATURE CORRECTED AND HORIZONTALLY TAPED MEASUREMENTS

ROLAND W. ANDERSON
COUNTY SURVEYOR
ANOKA COUNTY, MINNESOTA

E 1/4 Cor. Section 11 T31 R24

Reset cast iron monument before blacktop construction. c.i. flush

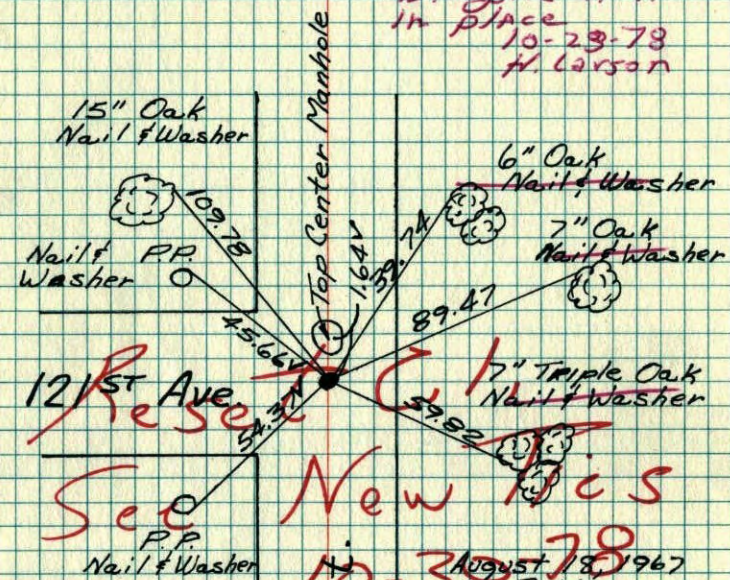


*1 62°
10-30-78
H. Larson
B. Guetako
D. Naglok

E 1/4 Cor. Sec. 12, T31, R24

Reset Cor From Ties Taken Prior To Street Reconstruction Cast Iron In Place. P.K.'s 2' S&E

~~Cast Iron P.K.~~
In place
10-23-78
H. Larson



Sept 12, 1966
M. D. Anderson
D. Powell

TIE CHECK
JUNE 20, 1977
P. SANNERUD
J. BRIEN
J. STEPHENS

See New Ties
August 18, 1967
D. Potter
D. Powell

TIE CHECK
July 8, 1974
R. Farmer
H. D.
D. D.

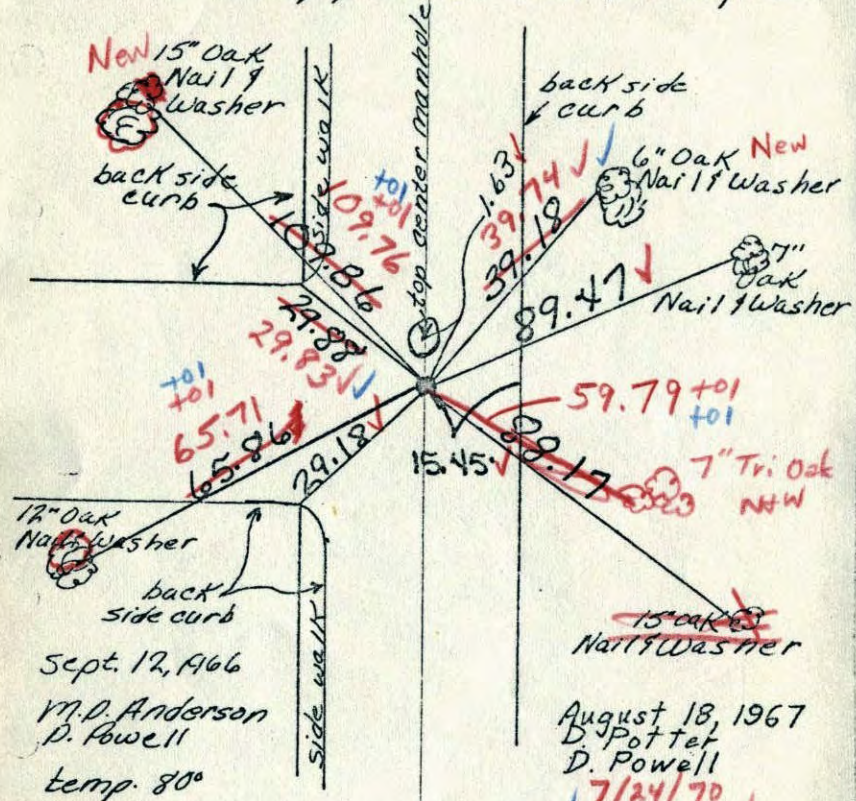
TEMPERATURE CORRECTED ROLAND W. ANDERSON
AND HORIZONTAL COUNTY SURVEYOR
TAPED MEASUREMENTS ANOKA COUNTY, MINNESOTA

X E

W 1/4 Cor. Sec. 12, T 31, R 24

Reset Cor. from ties taken prior to street reconstruction.

~~Set 4" iron pipe flush~~ Cast Iron in place.



TEMPERATURE CORRECTED AND HORIZONTALLY TAPED MEASUREMENTS

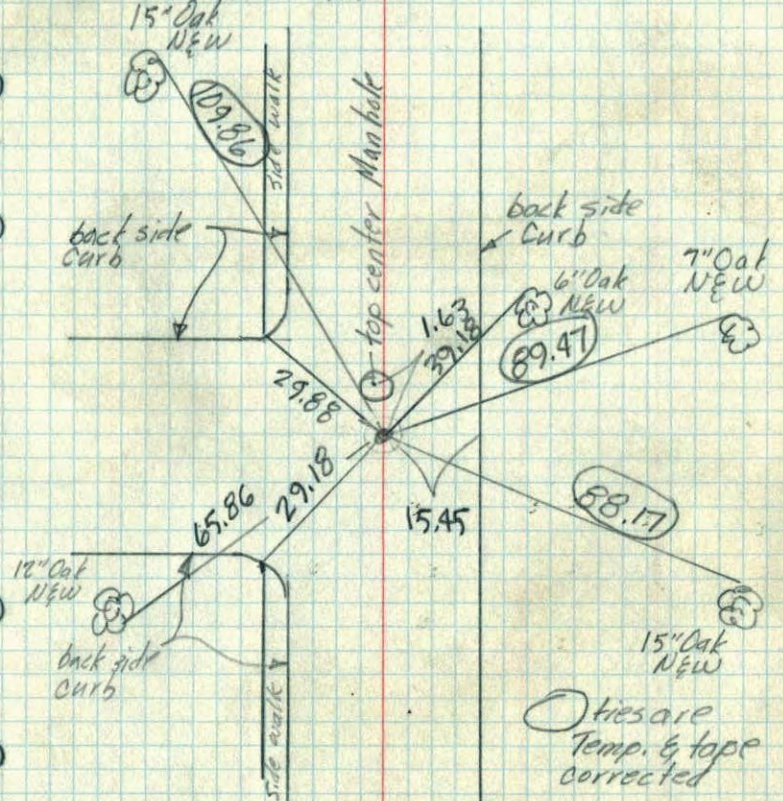
ROLAND W. ANDERSON
COUNTY SURVEYOR
ANOKA COUNTY, MINNESOTA

E

W 1/4 Cor. Sec. 12-T 31-R 24

Reset Cor. from ties taken prior to street reconstruction.

Set 4" iron pipe flush



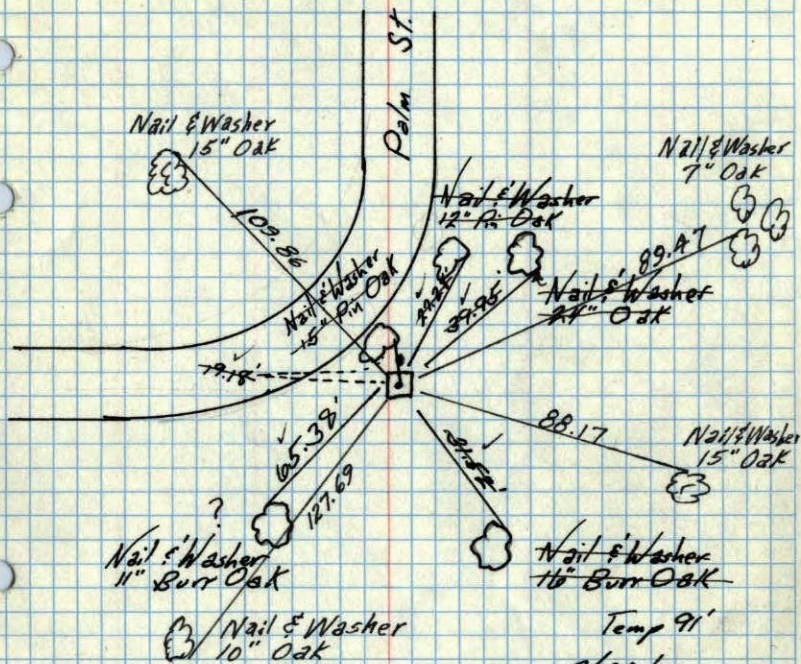
Sept. 12, 1966
M.D. Anderson
D. Powell
temp 80°
new tape

Ties are Temp. & tape corrected

E 11 37
W 1/4 Cor. Sec 12 - T31-R24

Con. Mon. Flush

Iron Pipe on North Side



TEMPERATURE CORRECTED
AND HORIZONTALLY
TAPED MEASUREMENTS

Temp 91'
7/22/60

Ties checked
June 5, 1964
M. D. Anderson
R. Carlson
(All ties good)

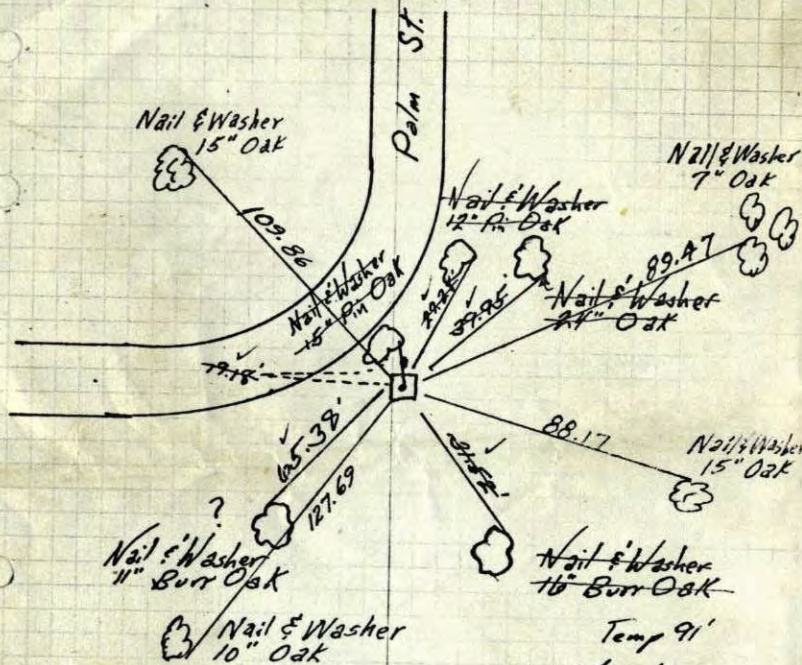
ROLAND W. ANDERSON
COUNTY SURVEYOR
ANOKA COUNTY, MINNESOTA

Four Long Ties
June 1, 1965
J. Oliver
M. D. Anderson
J. Dunlop

E 11 37
W 1/4 Cor. Sec 12 - T31-R24

Con. Mon. Flush

Iron Pipe on North Side



TEMPERATURE CORRECTED
AND HORIZONTALLY
TAPED MEASUREMENTS

Temp 91'
7/22/60

Ties checked
June 5, 1964
M. D. Anderson
R. Carlson
(All ties good)

ROLAND W. ANDERSON
COUNTY SURVEYOR
ANOKA COUNTY, MINNESOTA

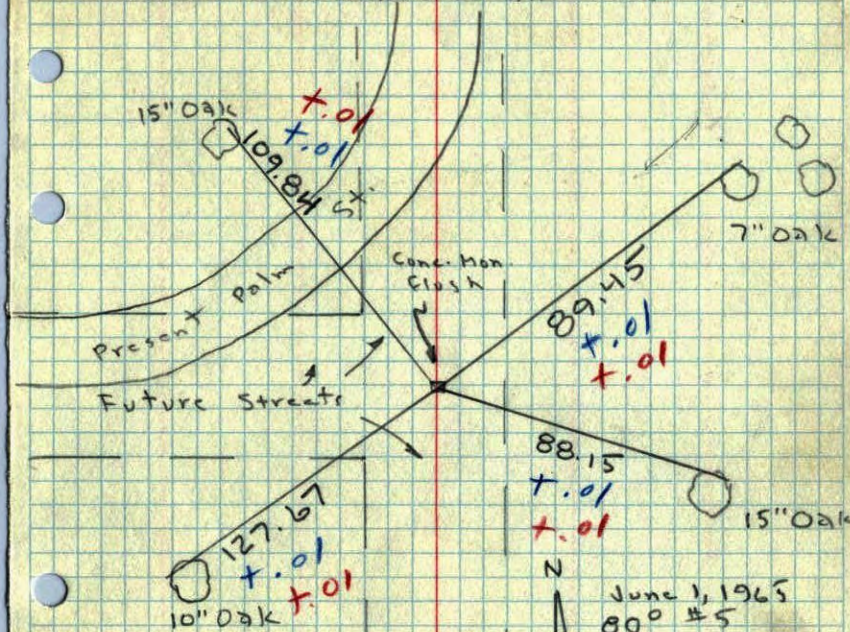
Four Long Ties
June 1, 1965
J. Oliver
M. D. Anderson
J. Dunlop

11
W 1/4 Cor. Sec. 12, T31, R24

Took Additional Ties to Conc. Mon.

because of Street Construction,

Nails and washers in all Trees



June 1, 1965
90° #5

J. Oliver
M.D. Anderson
H. Larson
J. Dunlap

48442.1 E
W 1/4 Sec. Cor. 12, T31, R24

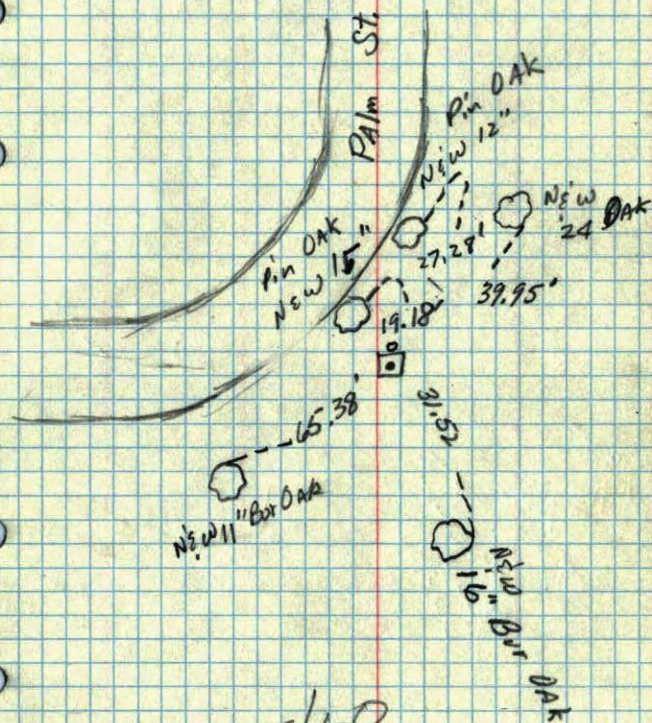
7/22/60

91°

in

48455.2

Con. Mon Flush
Iron Pipe on North

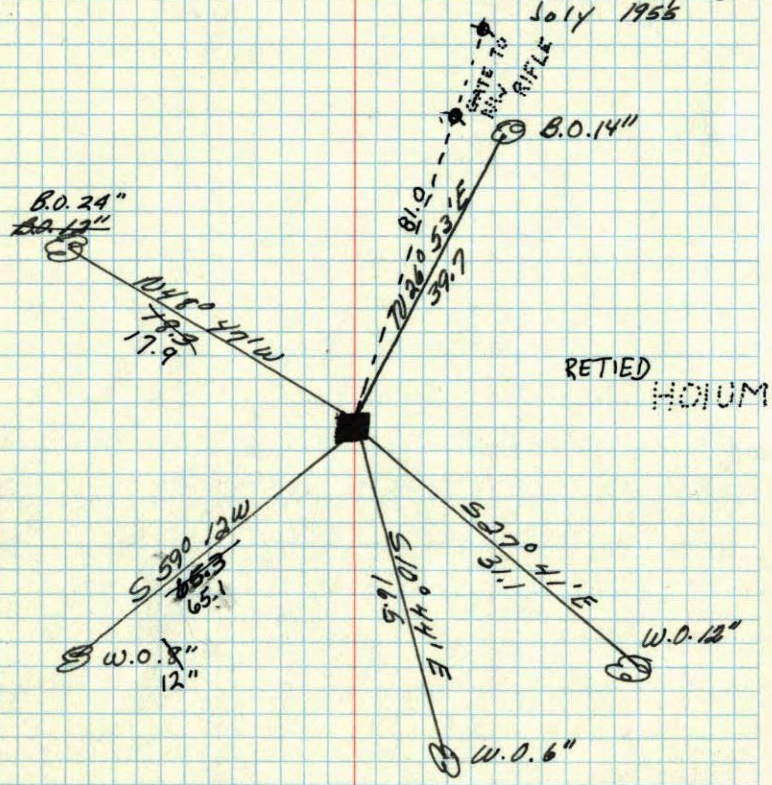


6/5/60

E 11
to 1/4 corner Sec. 11 T. 31 R. 24

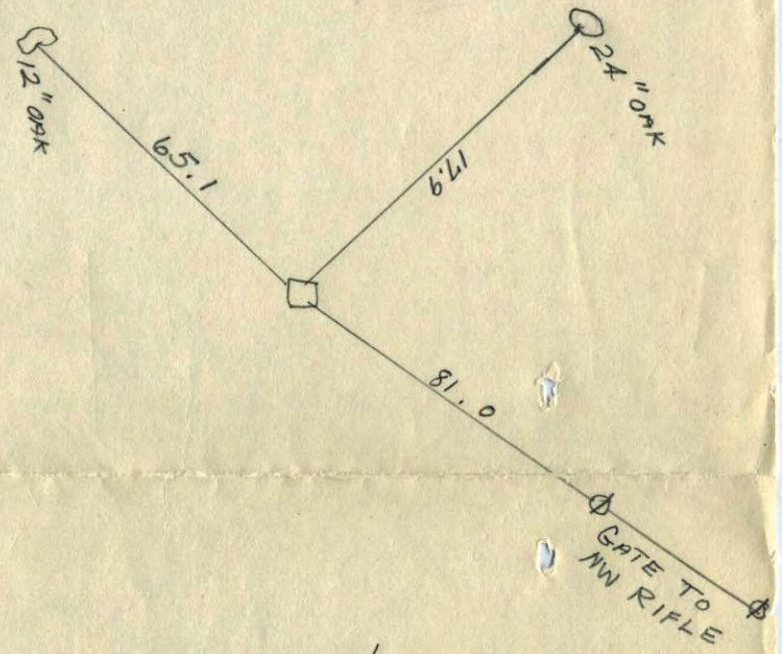
Concrete Monument flush

Found by
Minder Eng. Co.
July 1956



Nov. 26, 1943
Cartwright

line



Suburban Eng.

E 1/4 SEC 11
31-24
Conc. Mon.

✓