

CERTIFICATE OF LOCATION OF GOVERNMENT CORNER

County of Anoka

State of Minnesota

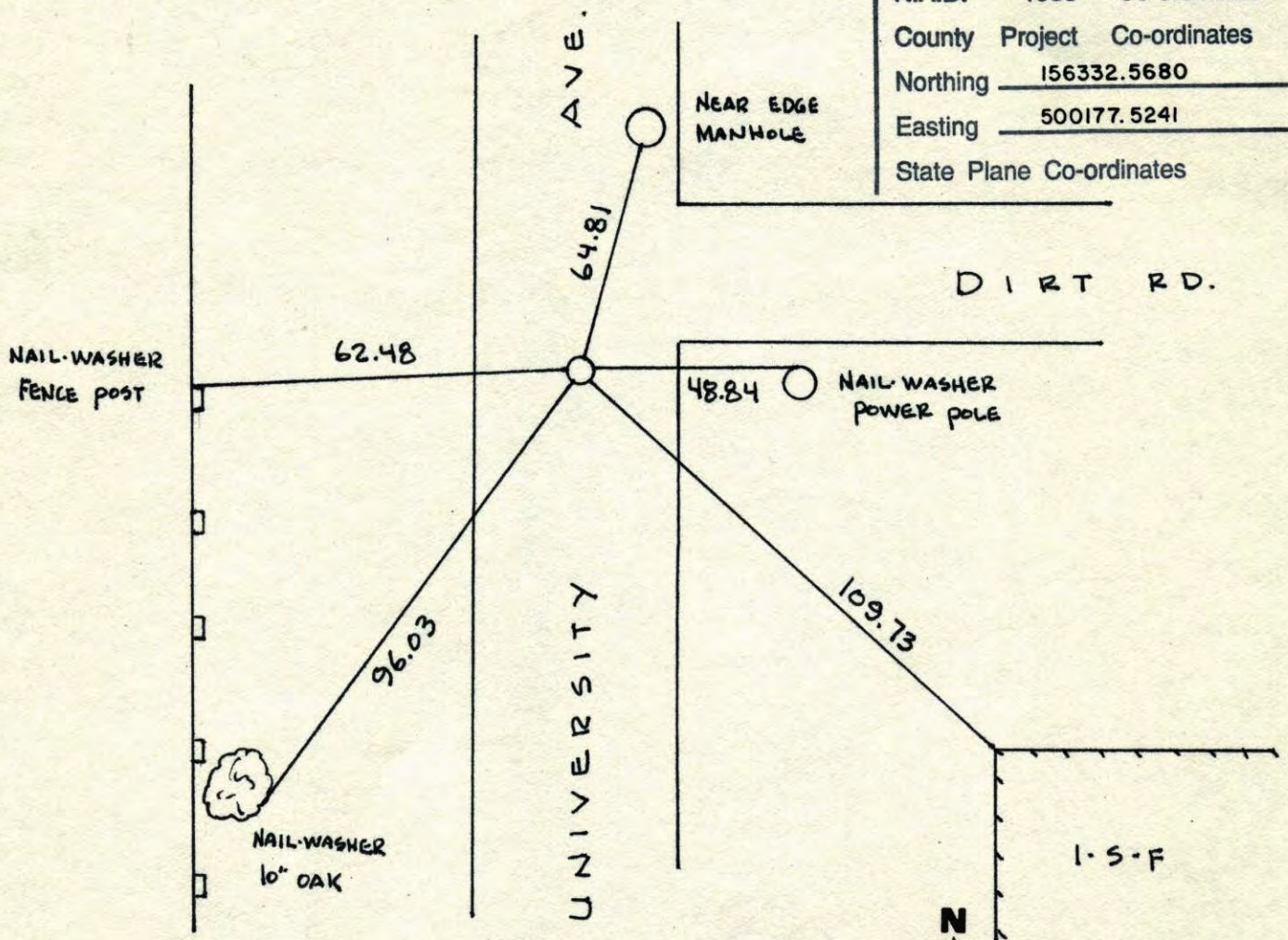
EAST $\frac{1}{4}$ Corner of Sec. 12 Township 31 Range 24

I hereby certify that on the 6TH day of JULY, 1960, I found the described corner which was evidenced by CONCRETE

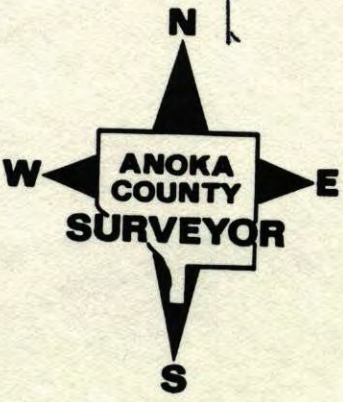
and I further certify that to perpetuate the location of said corner, I did, at the exact location thereof, place a permanent marker consisting of CAST IRON MONUMENT

which reference or witness monuments are located in the manner following:

N.A.D.	1983	Co-ordinates
County	Project	Co-ordinates
Northing	<u>156332.5680</u>	
Easting	<u>500177.5241</u>	
State Plane Co-ordinates		



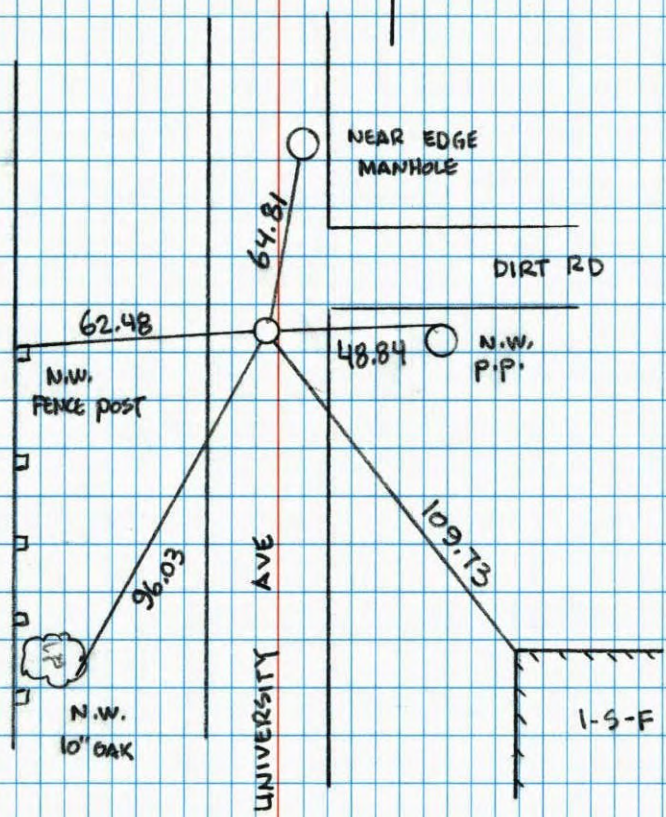
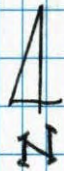
Revised date	Revised date	Revised date
6-18-86		
8-3-94		
10-12-98		



E 1/4 COR SEC 12 T 31 R 24

RETIED CAST IRON MONUMENT

10-12-98
J. SIMMER
B. KLENZ
H. LARSON



NO. 446

NATIONAL PRINTFAST

E 1/4 Sec. 12 T. 31 R. 24
Retie Cast Iron Mon.

Phone Box

Near Edge Man Hole

DIRT ROAD

100.02

64.81

96.03

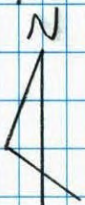
48.84 N&W Power Pole

N&W 6" oak

109.73

UNIVERSITY

1-S-F



8-3-94

Jayme Anderson
Josh Anderson

NO. 446

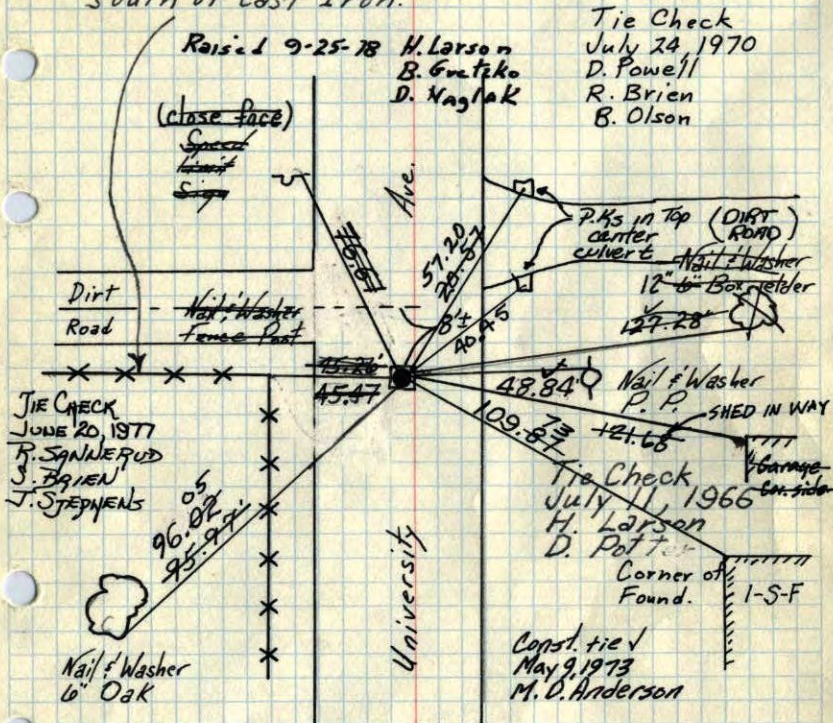
NATIONAL PRINTFAST

E 1/4 Cor. Sec 12, T31, R24

Found Conc. Mon. Down 12'
Placed Cast Iron Mon. flush

PK Nails 2.00' South ~~West~~ NORTH & EAST

East-west fence is 22'±
south of Cast Iron.



7/6/60 TIE CHECK TEMPERATURE CORRECTED
7-27-70 AND HORIZONTALLY
D. Potter D. DAHL TAPED MEASUREMENTS
R. Robinson

Retie 6/18/64 TIE CHECK
6-24-80 B. STEPHENS

M. D. Anderson ROLAND W. ANDERSON
R. Carlson COUNTY SURVEYOR

REPLACE CAST IRON ANOKA COUNTY, MINNESOTA
7/3/74
R. FARMER

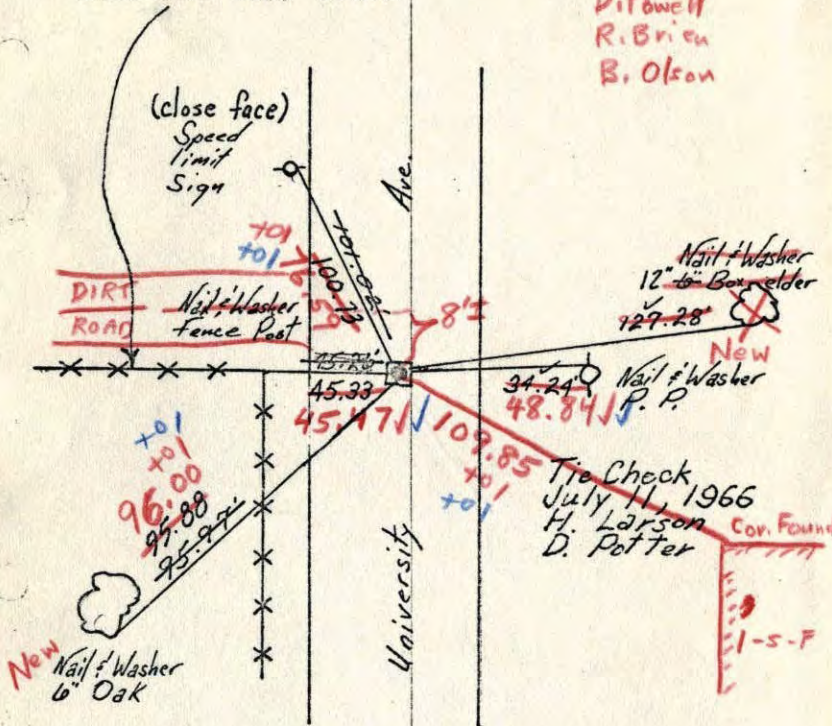
E 1/4 Cor. Sec 12, T31, R24

Found Conc. Mon. Down 12'
Placed Cast Iron Mon. flush

PK's 2.00' S+W.

East-west fence is 22'±
south of Cast Iron.

7/24/70
#11-850
D. Powell
R. Brien
B. Olson



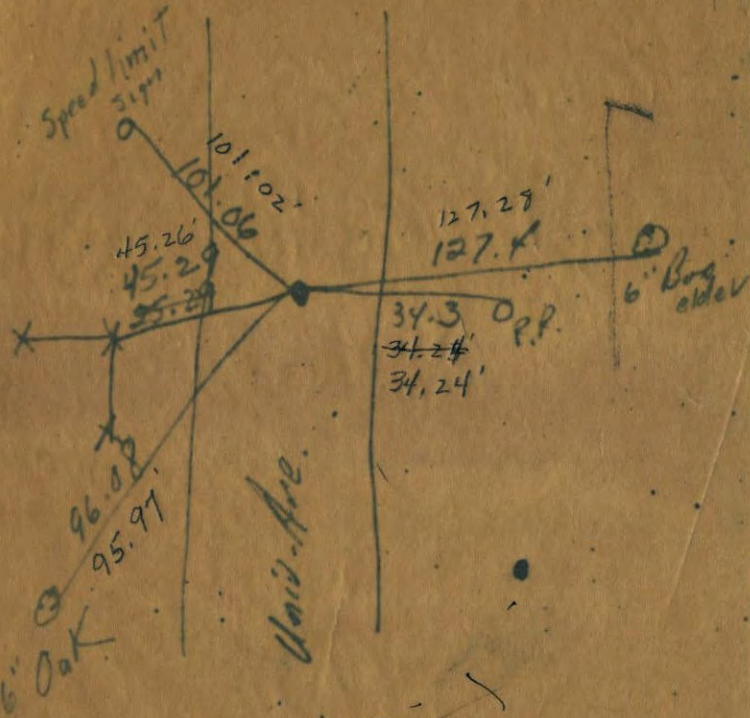
7/6/60 TEMPERATURE CORRECTED
D. Potter AND HORIZONTALLY
R. Robinson TAPED MEASUREMENTS

Retie 6/18/64

M. D. Anderson ROLAND W. ANDERSON
R. Carlson COUNTY SURVEYOR

ANOKA COUNTY, MINNESOTA

E 1/4 Cor Sec 12-31-24
 Iron Pipe down 6"



7/6/60
 RR

temp. 19°

Minder Eng. Co. July 1951
 John E. Hopkins



CONCRETE
 PIPE

**NORTH STAR CONCRETE
 CO.**

PHONE MINNEAPOLIS GR 7231
 ST. PAUL ZE. 2127

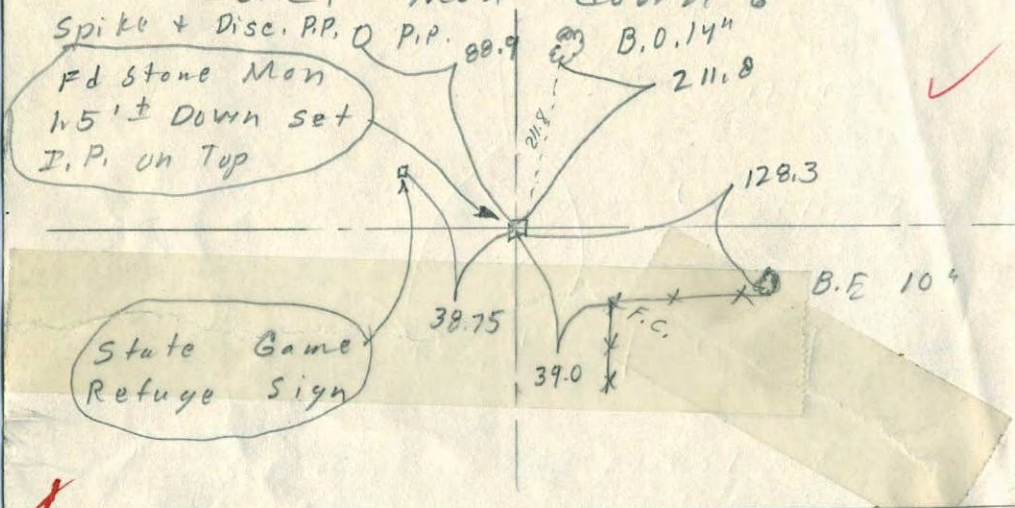
PRECAST
 MANHOLES



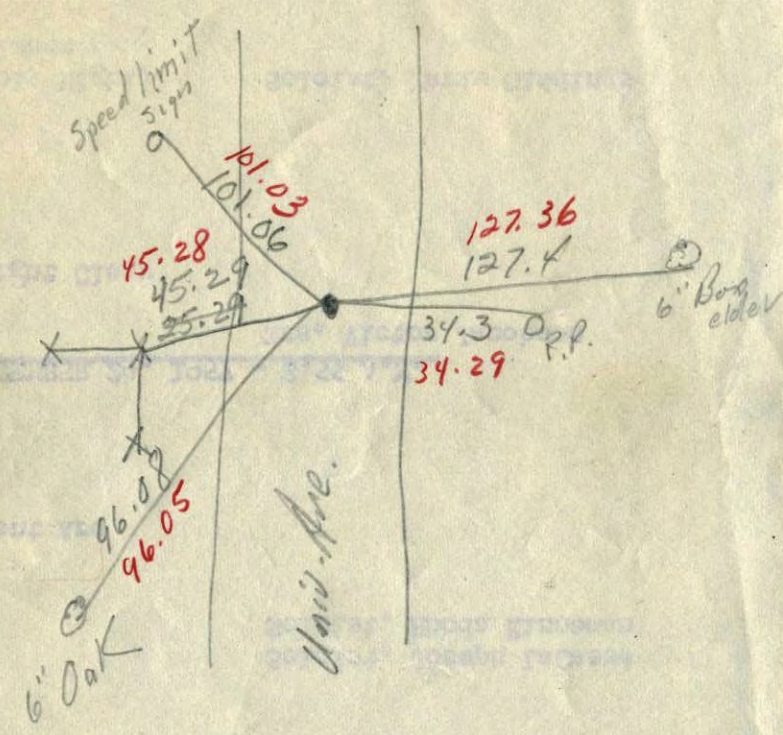
1 1/2' E 1/4 Cor of Sec 12-31-24

Conc. Man down 6"
 Spike + Disc. PP, D PIP. 88.9 B.O. 14"

Fd stone Man
 1/5' ± Down set
 I.P. on Top

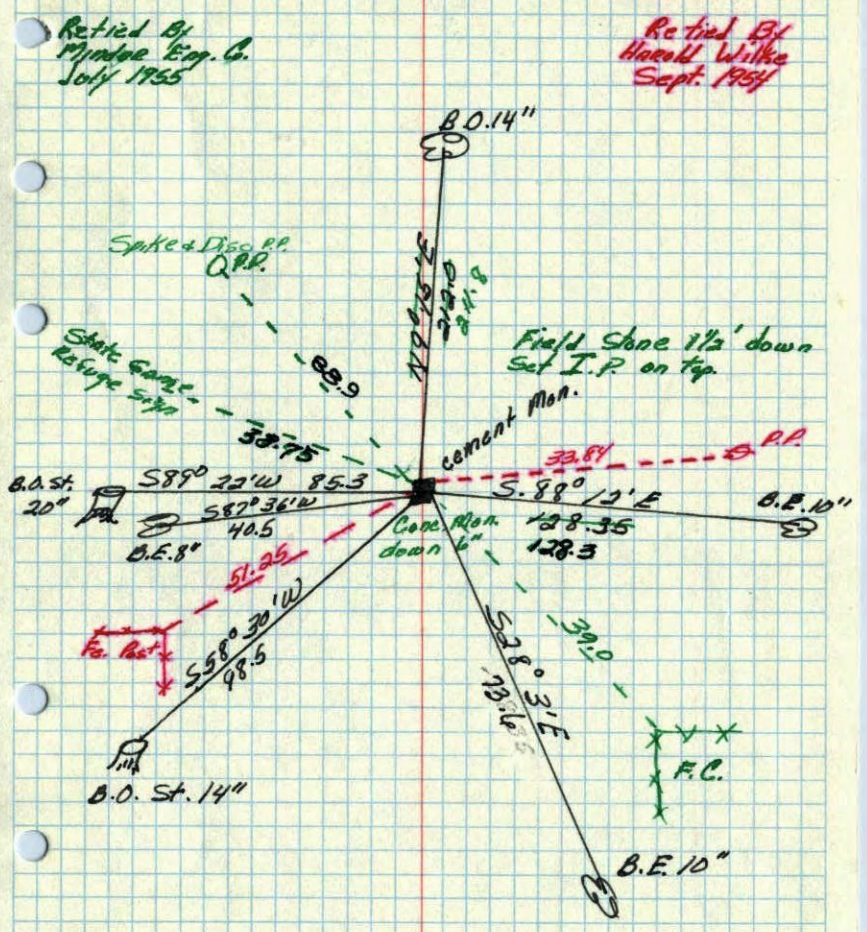


E 1/4 Cor. Sec. 12 + 31 R. 24
 Iron Pipe down 6"



Temp. 19°

E 1/4 corner of Sec. 12 T. 31 N. R. 24 W.
 Concrete Monument down 6"



Retied By
 Myndoe Eng. Co.
 July 1955

Retied By
 Harold Wilke
 Sept. 1954

Field Shoe 1 1/2' down
 Set I.P. on top.

R.C.

June 7, 1943
 Coetwright