

# CERTIFICATE OF LOCATION OF GOVERNMENT CORNER

County of Anoka

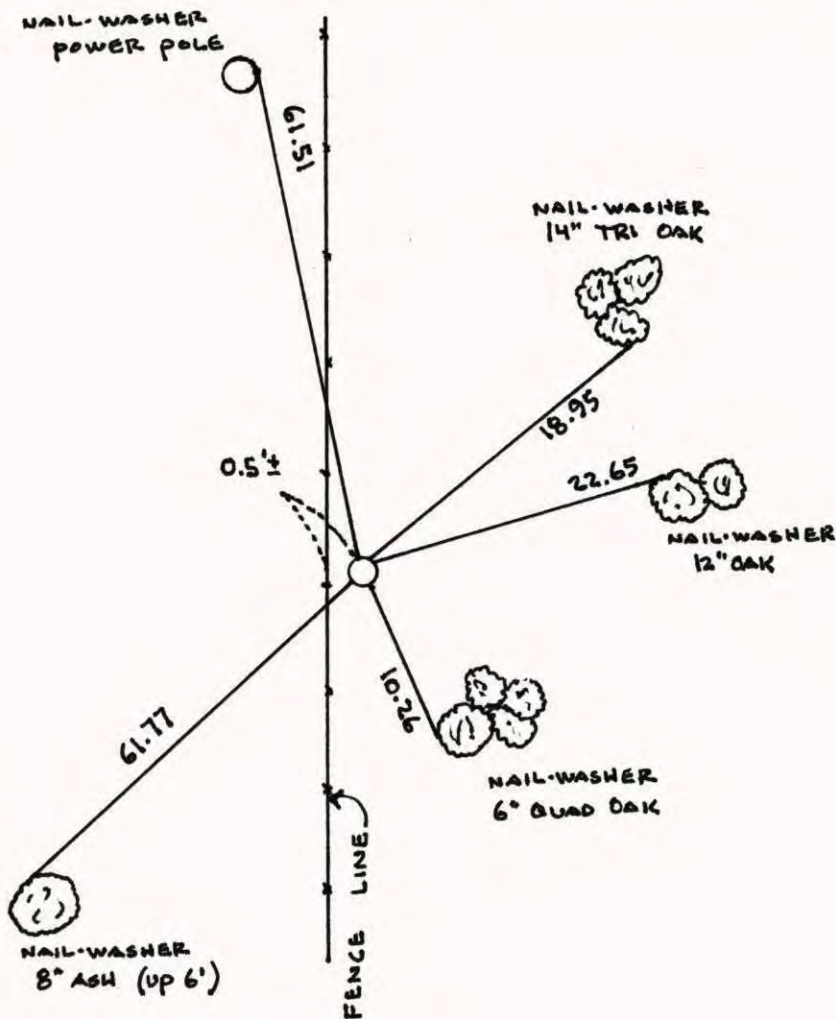
State of Minnesota

SOUTH 1/4 Corner of Sec. 12 Township 31 Range 24

I hereby certify that on the 23<sup>RD</sup> day of APRIL, 1963, I found the described corner which was evidenced by IRON PIPE

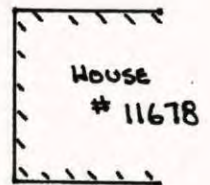
and I further certify that to perpetuate the location of said corner, I did, at the exact location thereof, place a permanent marker consisting of CAST IRON MONUMENT

which reference or witness monuments are located in the manner following:

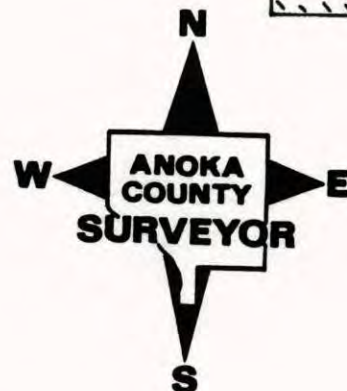


House # 11710

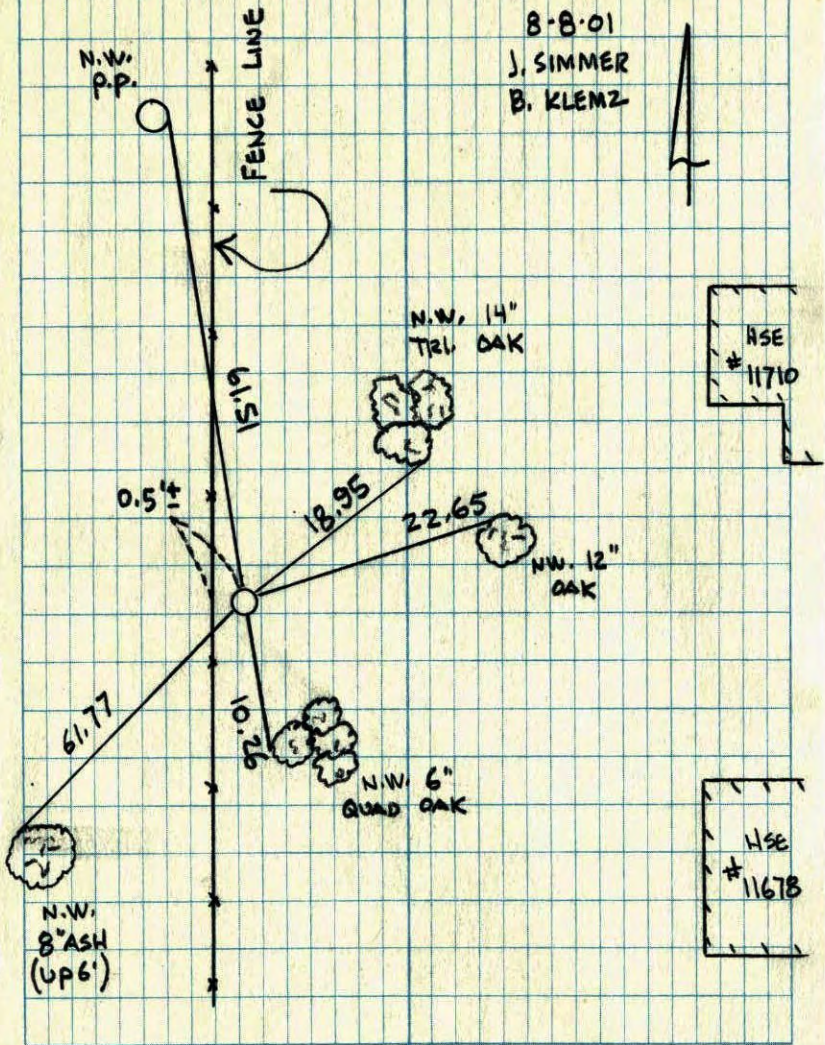
N.A.D.	1983	Co-ordinates
County	Project	Co-ordinates
Northing	<u>153665.8118</u>	
Easting	<u>497459.9540</u>	
State Plane Co-ordinates		
Y	_____	
X	_____	
Date	_____	



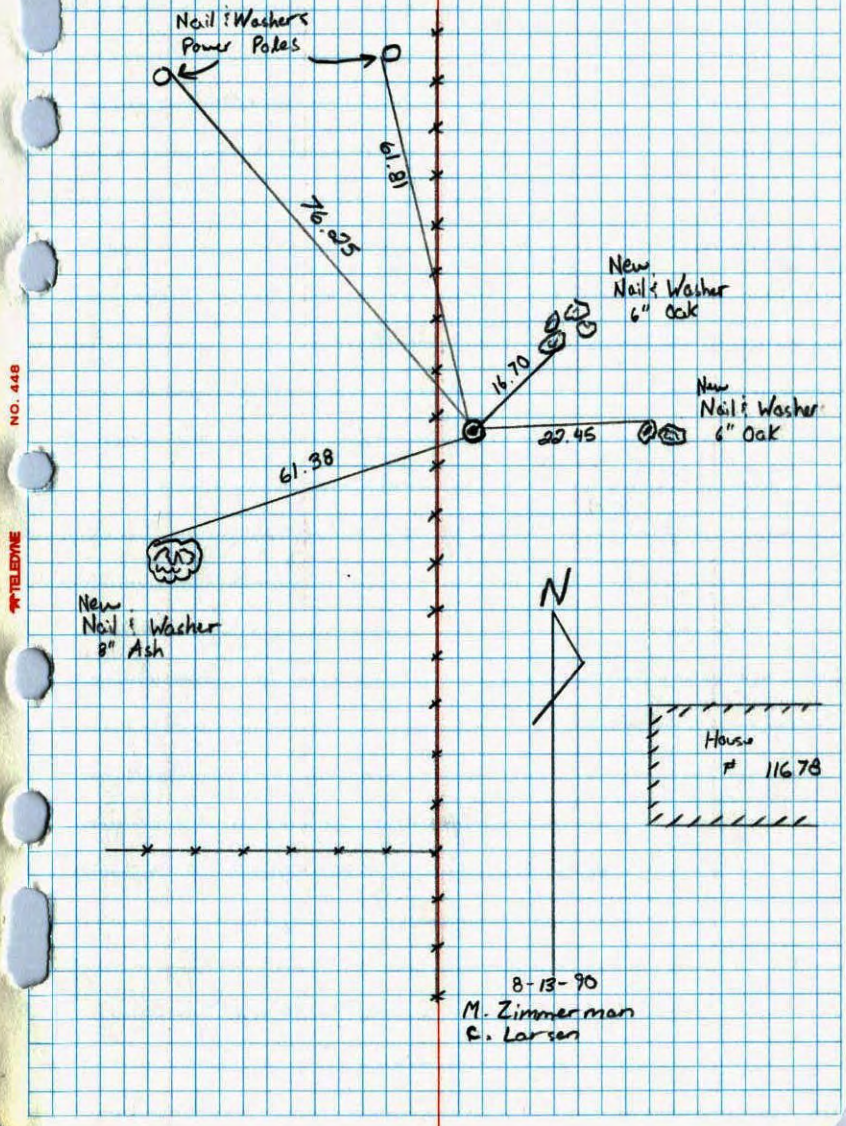
Revised date	Revised date	Revised date
6-20-77	8-8-01 G.P.S.	
7-9-80		
7-25-83		
12-29-83		
6-23-86		
8-13-90		
8-9-94		



SOUTH 1/4 COR. SEC 12 T 31 R 24  
RETIED & GPS CAST IRON MONUMENT



South 1/4 Corner Sec. 12 T31 R24  
Retied Cast Iron Monument



## 5/4 CORNER SECTION 12-T31-R24

FOUND IRON PIPE SET IN CONCRETE WITH IRON PIPE ON WEST SIDE.

23 APR 63

J. OLIVER

M. D. ANDERSON

SET CAST IRON MONUMENT FLUSH.

20 JUN 77

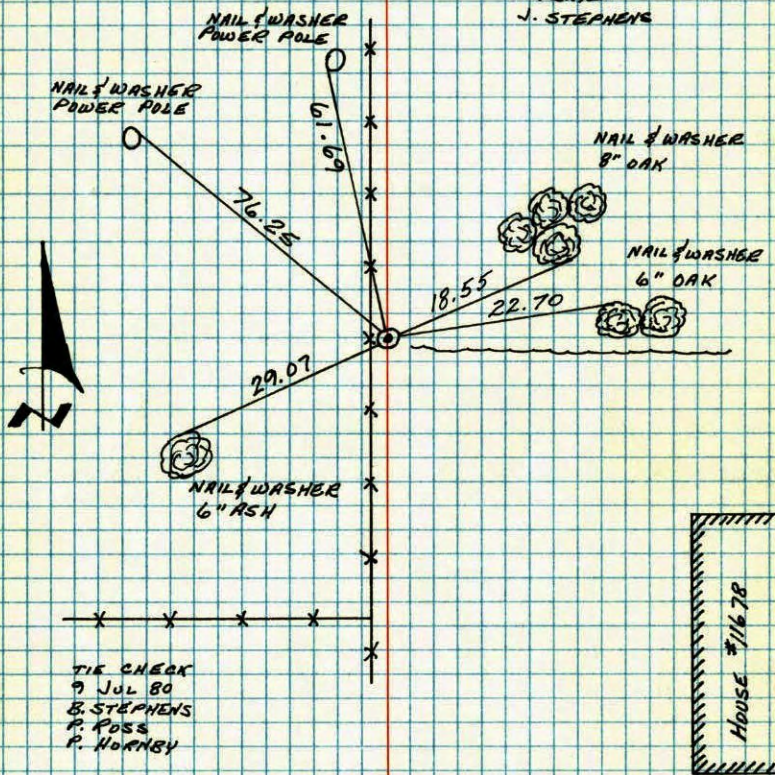
R. SANNERUD

S. BRIEN

J. STEPHENS

NO. 448

TELEPHONE



TIE CHECK  
9 JUL 80  
B. STEPHENS  
P. FOSS  
P. HORNBY

TEMPERATURE CORRECTED  
AND HORIZONTALLY  
TAPED MEASUREMENTS

ROLAND W. ANDERSON  
COUNTY SURVEYOR  
ANOKA COUNTY, MINNESOTA

## 5/4 Cor. Sec 12 T.31 R.24

Cast iron monument flush.

7-9-80 #5

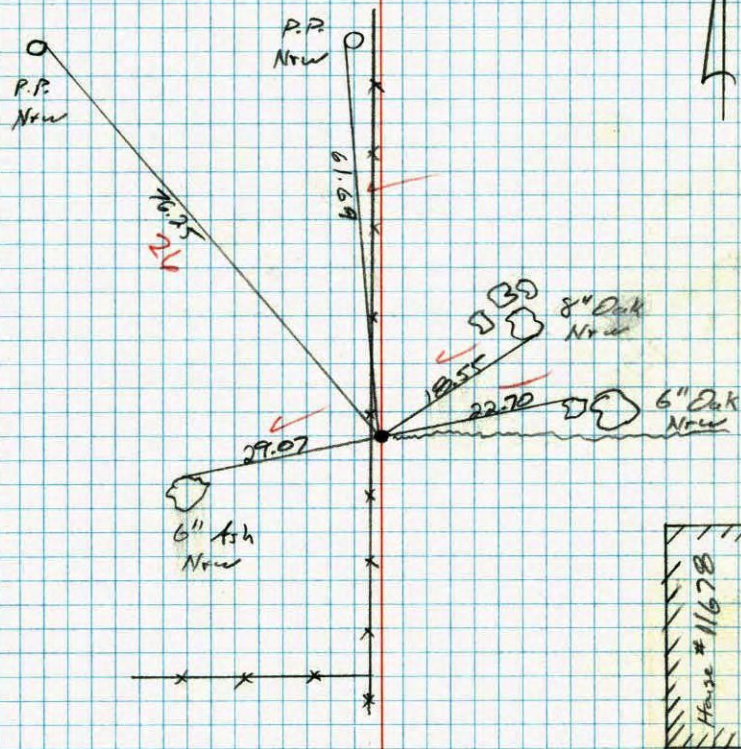
B. Stephens 86°

P. Foss

R. Hornby

NO. 448

TELEPHONE



House #11678

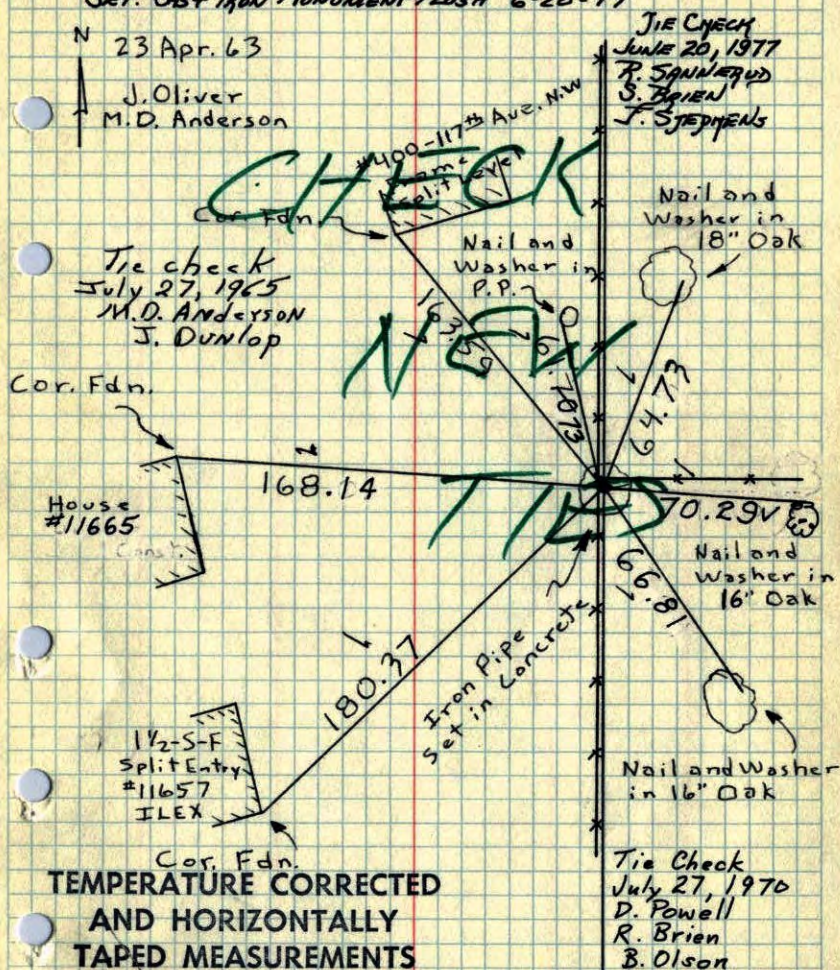
So. 1/4 Cor. Sec. 12, T31, R24

Found Iron Pipe Set in Concrete with

Iron Pipe on West Side. Up 0.2'.  
 SET. Cast Iron Monument Flush 6-20-77

N 23 Apr. 63

J. Oliver  
 M.D. Anderson



TEMPERATURE CORRECTED  
 AND HORIZONTALLY  
 TAPED MEASUREMENTS

Tie Check  
 July 12, 1966  
 H. Larson  
 D. Potter

ROLAND W. ANDERSON  
 COUNTY SURVEYOR  
 ANOKA COUNTY, MINNESOTA

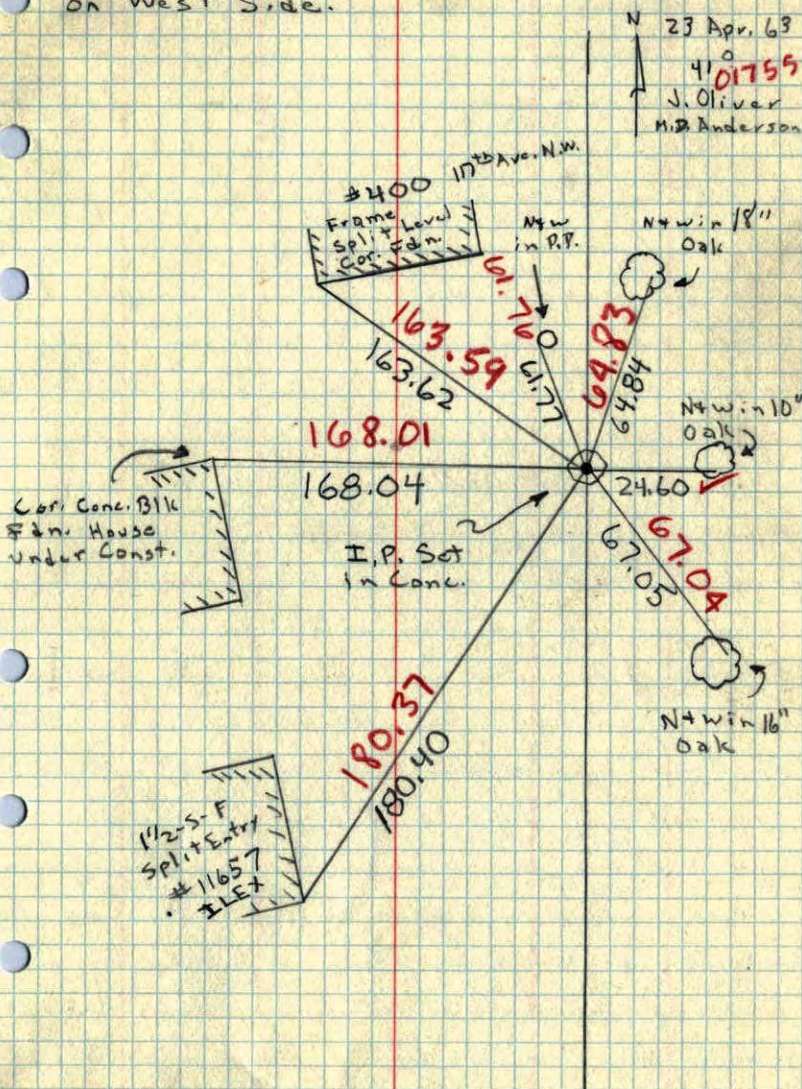
TIE CHECK  
 June 20, 1977  
 R. SPANIER  
 S. BRIEN  
 J. STEDMANS

So. 1/4 Cor. Sec. 12, T31, R24

Found I.P. Set in Conc. with I.P.  
 on West Side.

N 23 Apr. 63

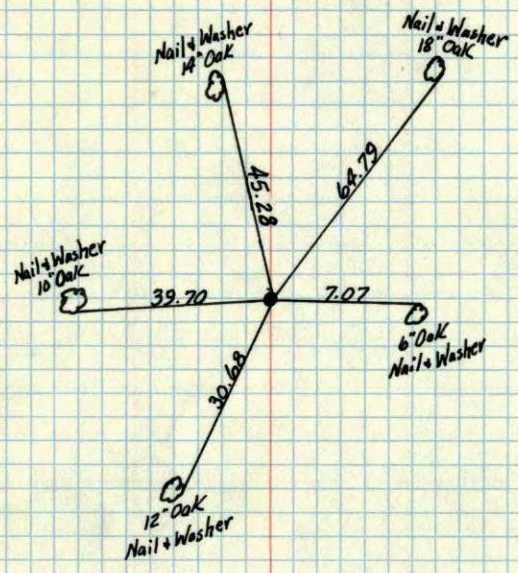
41 01755  
 J. Oliver  
 M.D. Anderson



1/2-S-F  
 Split Entry  
 #11657  
 ILEX

5/4 Corner Sec. 12 T31 R24

Open Iron Pipe set in Con. up 1'

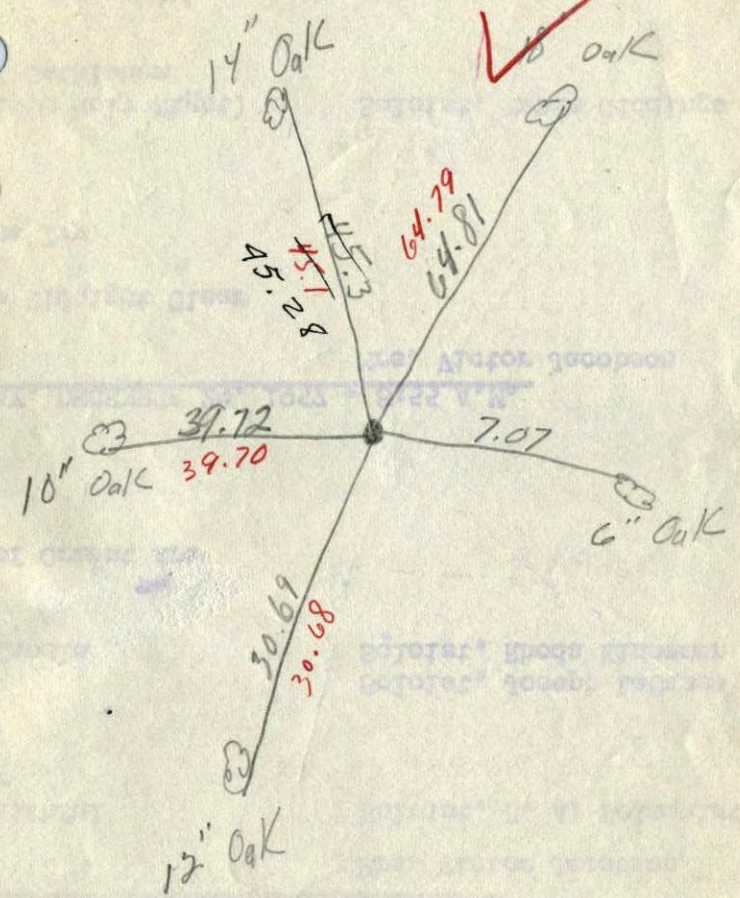


TEMPERATURE CORRECTED  
AND HORIZONTALLY  
TAPED MEASUREMENTS

Feb. 26, 1960

ROLAND W. ANDERSON  
COUNTY SURVEYOR  
ANOKA COUNTY, MINNESOTA

5/4 Cor. Sec. 12 T31 R24  
Open Iron Pipe set in  
Con. up. 1'

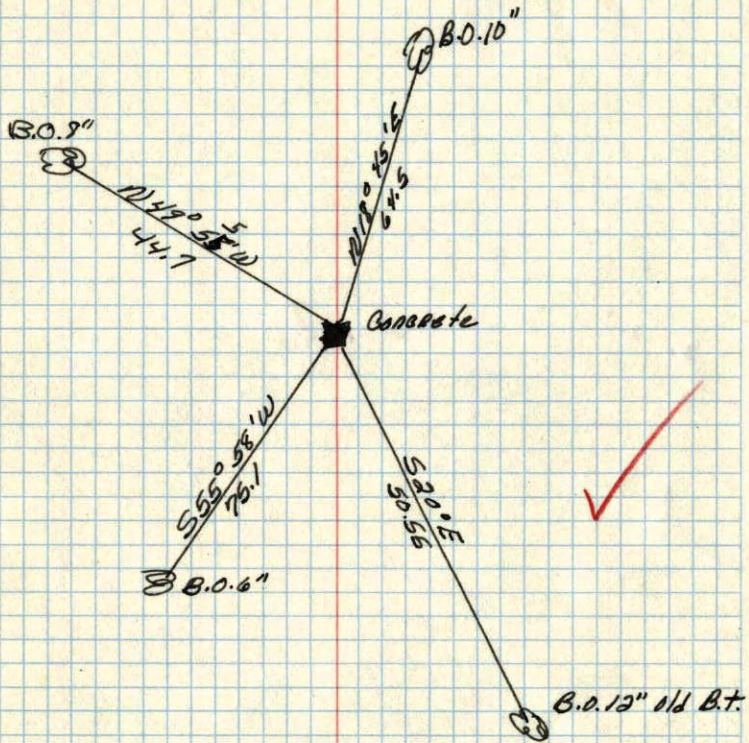


Temp 8°  
2/18/60

S 1/4 corner of Sec 12 T. 31 R. 24

Concrete Monument Floss

Ties O.K.  
Minder King Co.  
July 1959



April 1, 1944  
Cartwright