

# CERTIFICATE OF LOCATION OF GOVERNMENT CORNER

County of Anoka                      State of Minnesota

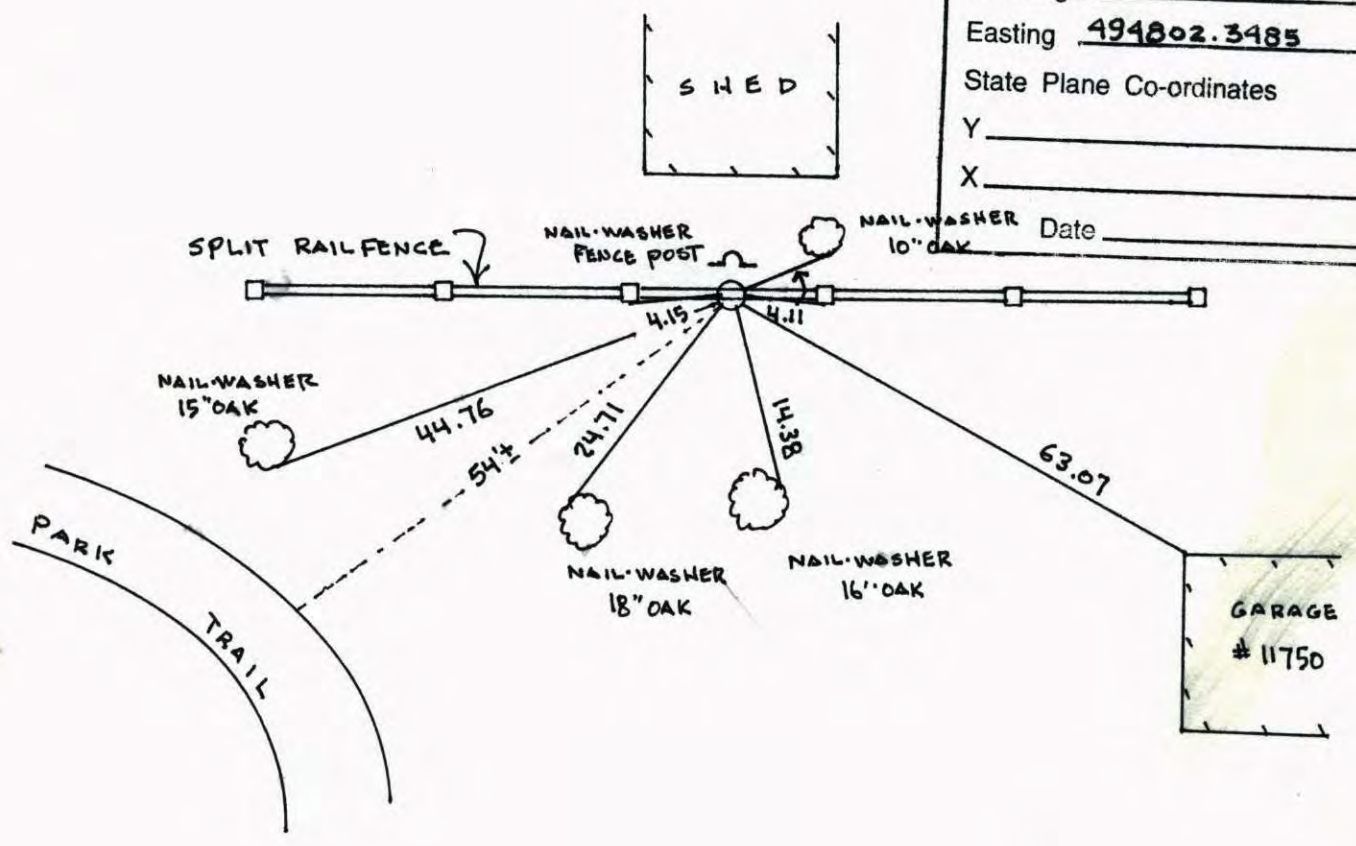
SOUTHWEST Corner of Sec. 12 Township 31 Range 24

I hereby certify that on the 23<sup>RD</sup> day of FEBRUARY, 1960, I found the described corner which was evidenced by CONCRETE

and I further certify that to perpetuate the location of said corner, I did, at the exact location thereof, place a permanent marker consisting of EAST IRON MONUMENT SIGN & POST ON NORTH SIDE.

which reference or witness monuments are located in the manner following:

N.A.D.	1983	Co-ordinates
County Project	Co-ordinates	
Northing	<u>153610.0810</u>	
Easting	<u>494802.3485</u>	
State Plane Co-ordinates		
Y	_____	
X	_____	
Date	_____	

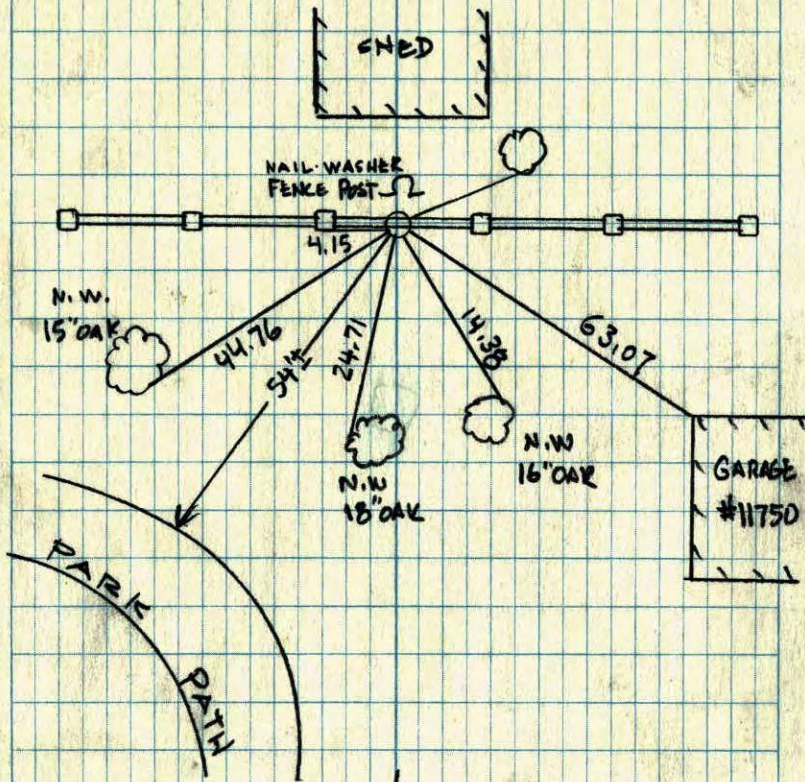


Revised date	Revised date	Revised date
7-27-70	10-22-01	
7-11-74		
6-20-77		
7-25-83		
6-19-86		
8-13-90		
8-11-94		



SOUTHWEST COR SEC 12 T31 R24

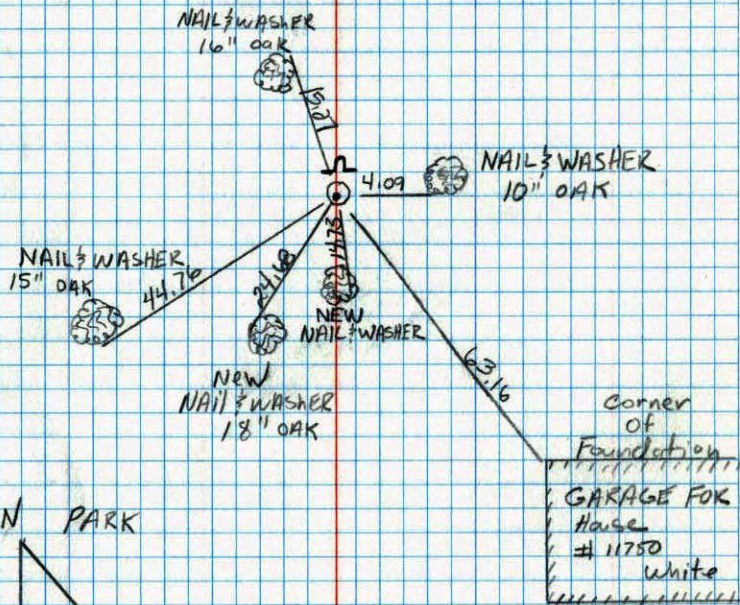
GPS & RETIED CAST IRON MON.  
SIGN & POST ON NORTH SIDE



10-22-01  
J. SIMMER  
B. KLEMZ

Southwest corner sec. 12 T31 R24

Retied CAST IRON Monument +  
sign & post North side



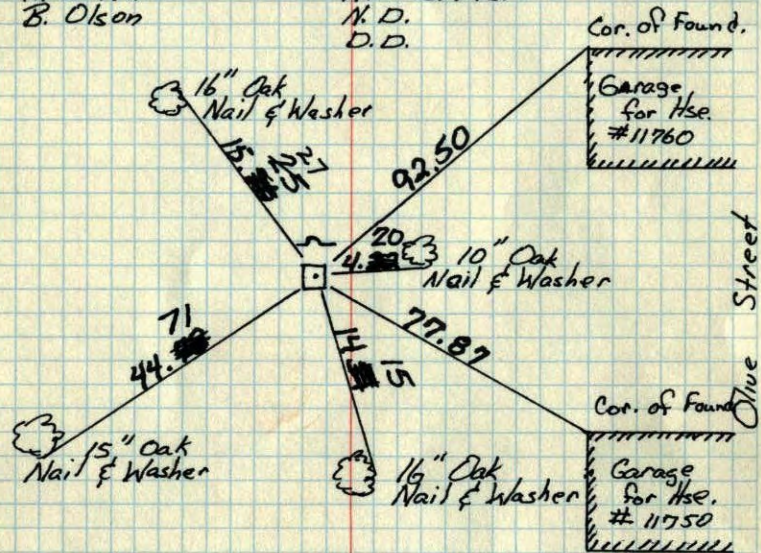
8-13-90  
M. Zimmerman  
C. Larsen

# SW Cor. Sec 12-T31-R24

Cone. Mon. Flush

Tie Check  
July 27, 1970  
D. Powell  
R. Brien  
B. Olson

Replaced With Cast. Iron  
Mon. (flush) Set Warning  
Sign 1'± West Of Mon.  
July 11, 1974  
R. Farmer  
N.D.  
D.D.



Park

TIE CHECK  
JUNE 20, 1977  
R. SPANLERUD  
S. BRIEN  
J. STEPHENS

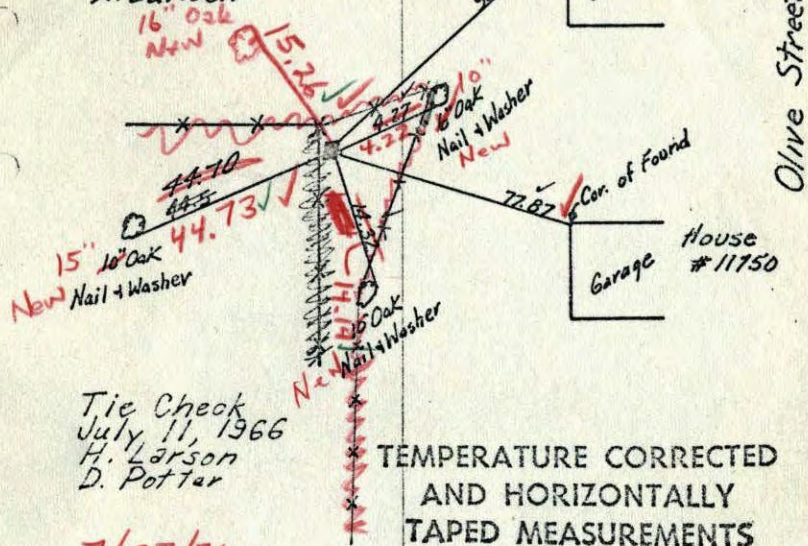
ROLAND W. ANDERSON  
COUNTY SURVEYOR  
ANOKA COUNTY, MINNESOTA

TEMPERATURE CORRECTED  
AND HORIZONTALLY  
TAPED MEASUREMENTS

# SW Corner Sec. 12 T31 R24

Cone. Mon. Flush

Ties checked  
June 5, 1964  
M.D. Anderson  
R. Carlson



Tie Check  
July 11, 1966  
H. Larson  
D. Potter

7/27/70  
#10-800  
D. Powell  
R. Brien  
B. Olson

TEMPERATURE CORRECTED  
AND HORIZONTALLY  
TAPED MEASUREMENTS

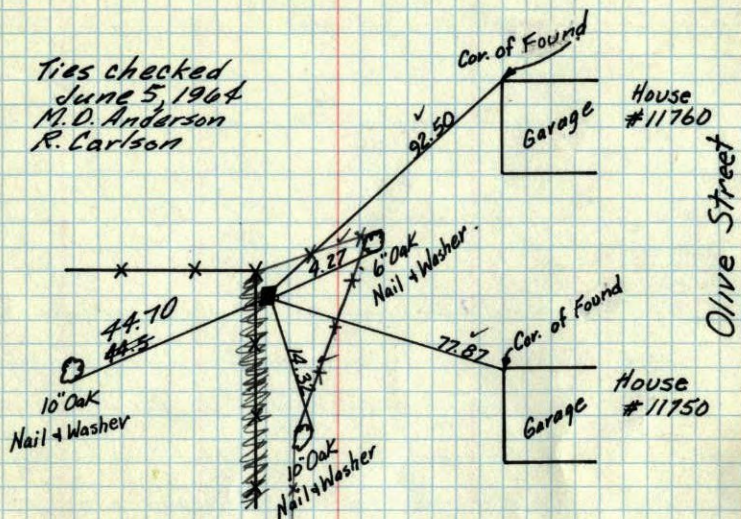
Feb. 23, 1960

ROLAND W. ANDERSON  
COUNTY SURVEYOR  
ANOKA COUNTY, MINNESOTA

SW Corner Sec. 12 T 31 R 24

Con. Mon. Flush

Ties checked  
June 5, 1964  
M. D. Anderson  
R. Carlson



Tie Check  
July 11, 1966  
H. Larson  
D. Potter

TEMPERATURE CORRECTED  
AND HORIZONTALLY  
TAPED MEASUREMENTS

Feb. 23, 1960

ROLAND W. ANDERSON  
COUNTY SURVEYOR  
ANOKA COUNTY, MINNESOTA

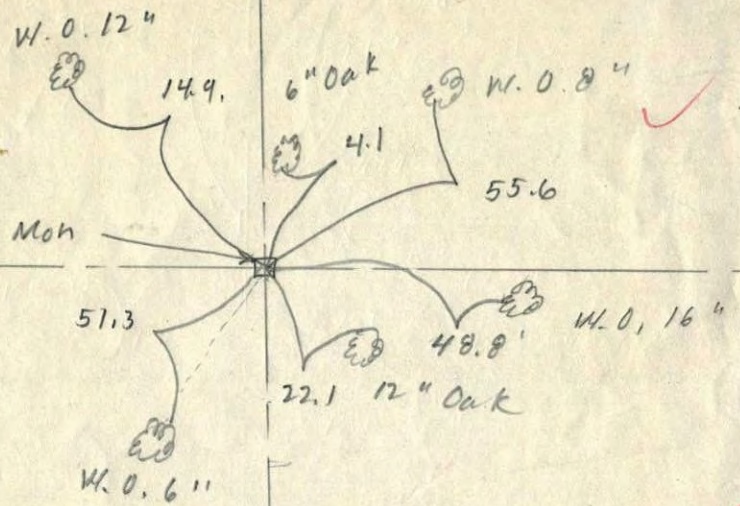
S. W. Cor of Sec 12-31-24

Minder Eng  
July 55

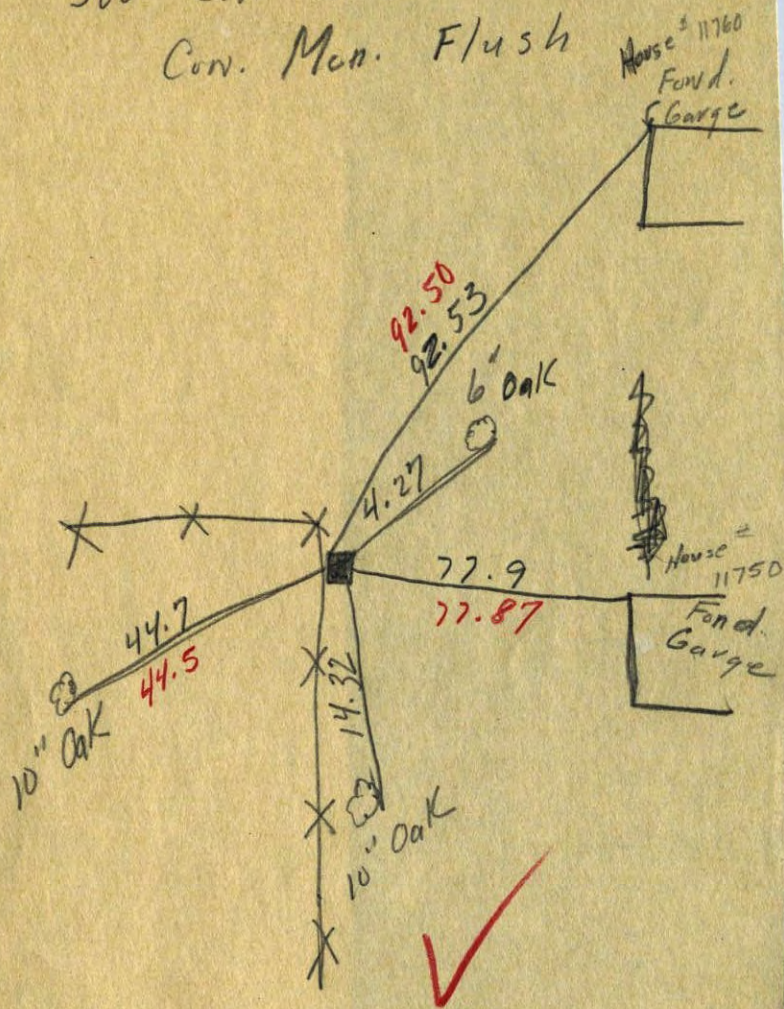
Found Conc. Mon



DRAIN TILE • SEWER PIPE • CATTLE PASS • CRIBBING



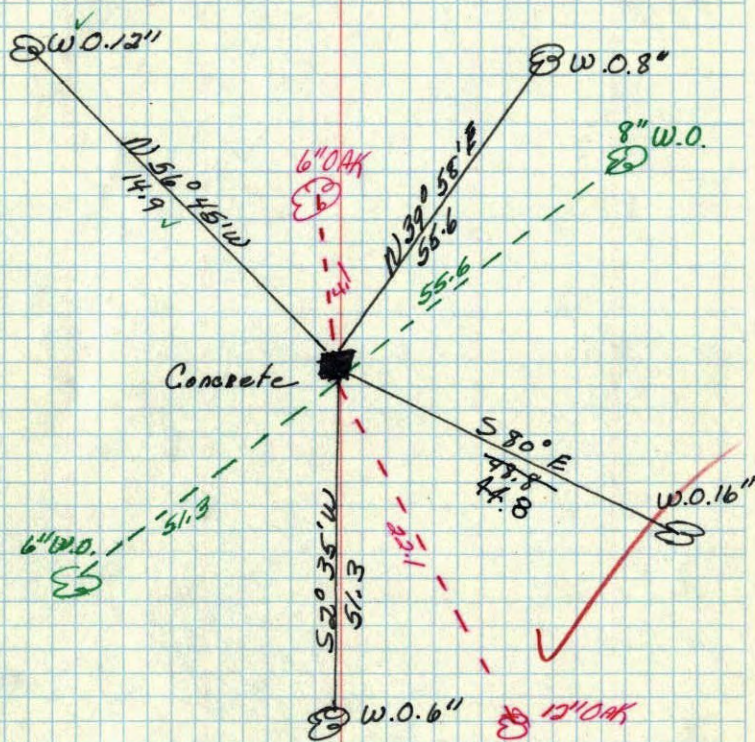
SW Cor. Sec. 12 T.31 R.24  
 Conv. Man. Flush



Temp 15° F

SW corner of Sec. 12 T.31 R.24  
 Concrete Monument

Retired By  
 Minder Eng. Co  
 July 1955  
 Minder Eng. Co  
 July 1955



April 1, 1944  
 Coetwright