

CERTIFICATE OF LOCATION OF GOVERNMENT CORNER

County of Anoka

State of Minnesota

South 1/4 Corner of Sec. 11 Township 31 Range 24

On the 22nd day of July, 1960, the described corner was evidenced by a concrete monument

and to perpetuate the location of said corner, at the exact location thereof, a permanent marker was placed consisting of the same concrete monument (up 2'±) with a sign and post on the east side

AND on the ___ day of February, 2010, said permanent marker was not found. The position will be redetermined and a new monument set at a later date.

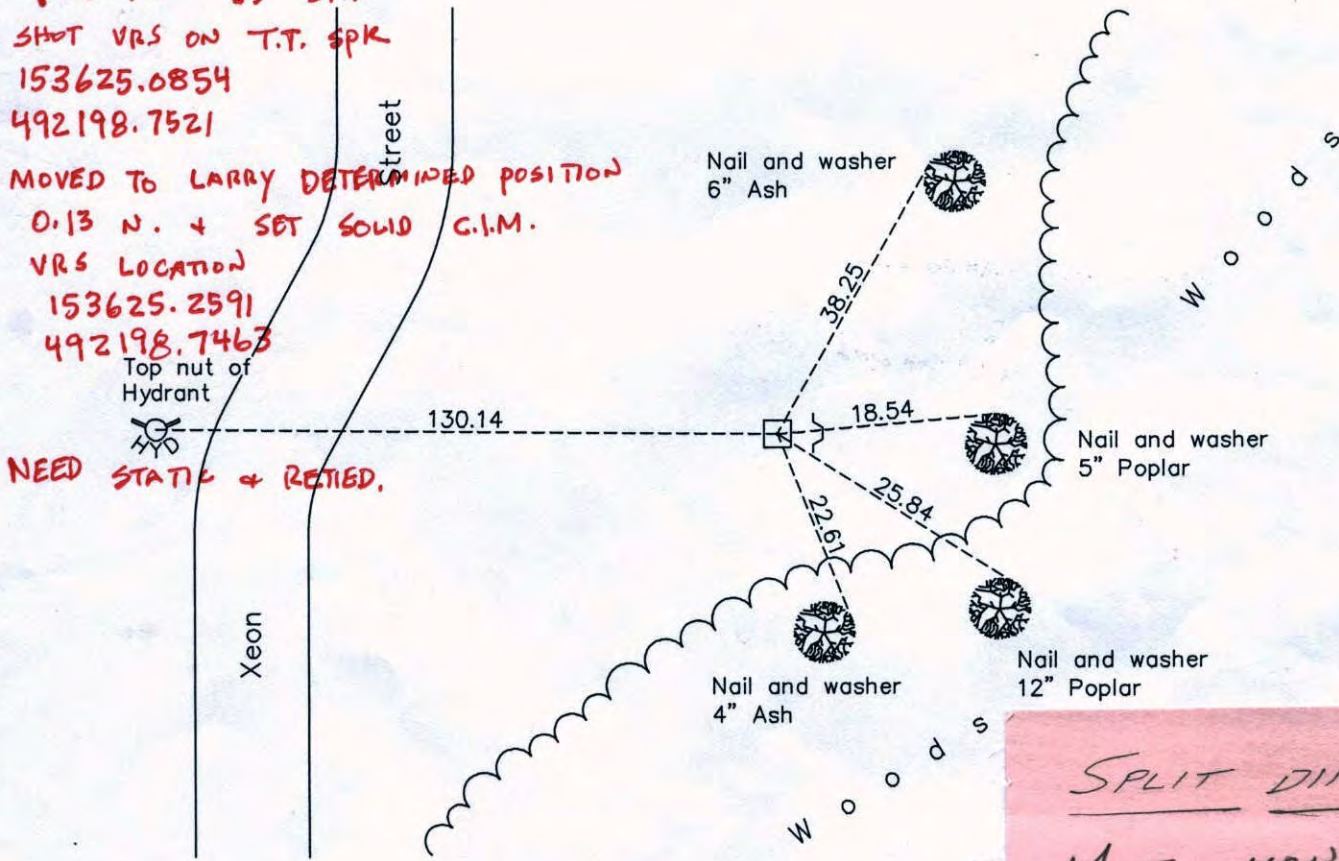
Updated reference ties are as shown below.

4-23-12 JS SH.
SHOT VRS ON T.T. SPK
153625.0854
492198.7521

MOVED TO LARRY DETERMINED POSITION
0.13 N. + SET SOLID C.I.M.
VRS LOCATION
153625.2591
492198.7463

Top nut of Hydrant

NEED STATIC & RETIED.



Revision Date
5/03/10

N.A.D. 1983 Coordinates
(1996 Adjustment)

County Project Coordinates	
Northing	153625.3884
Easting	492198.8074
Date	9/06/01

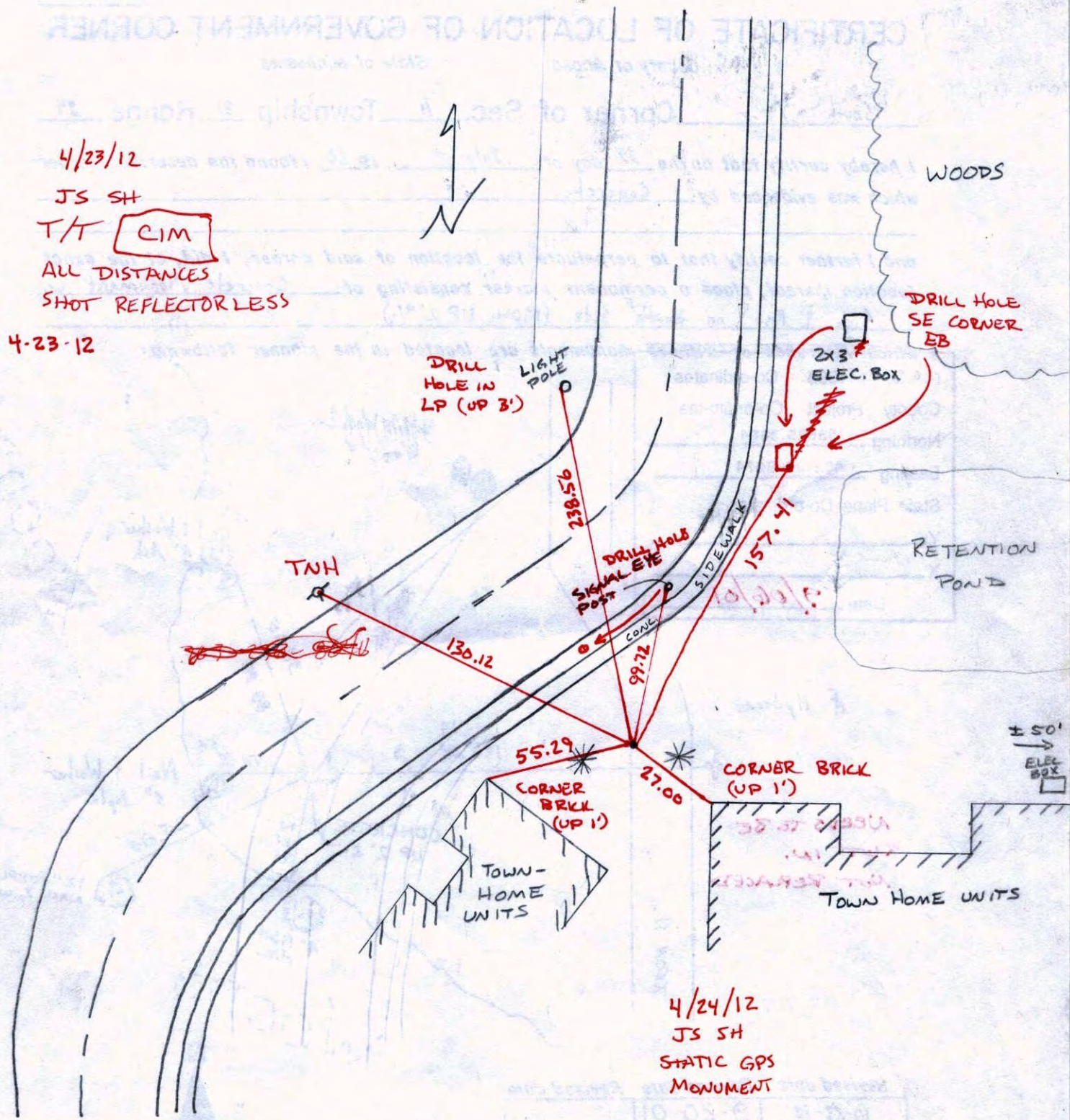
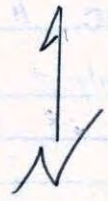
I hereby certify that this land survey is complete

Larry D. Hoium, Anoka County Surveyor
Minnesota License Number 18165

SPLIT DIFFERENCE
MOVE MONUMENT
0.13' NORTH OF
TRANSIT TIE
POSITION.

4/23/12
 JS SH
 T/T CIM
 ALL DISTANCES
 SHOT REFLECTORLESS

4-23-12



4/24/12
 JS SH
 STATIC GPS
 MONUMENT

ANOKA COUNTY
 SURVEYOR

CERTIFICATE OF LOCATION OF GOVERNMENT CORNER

County of Anoka State of Minnesota

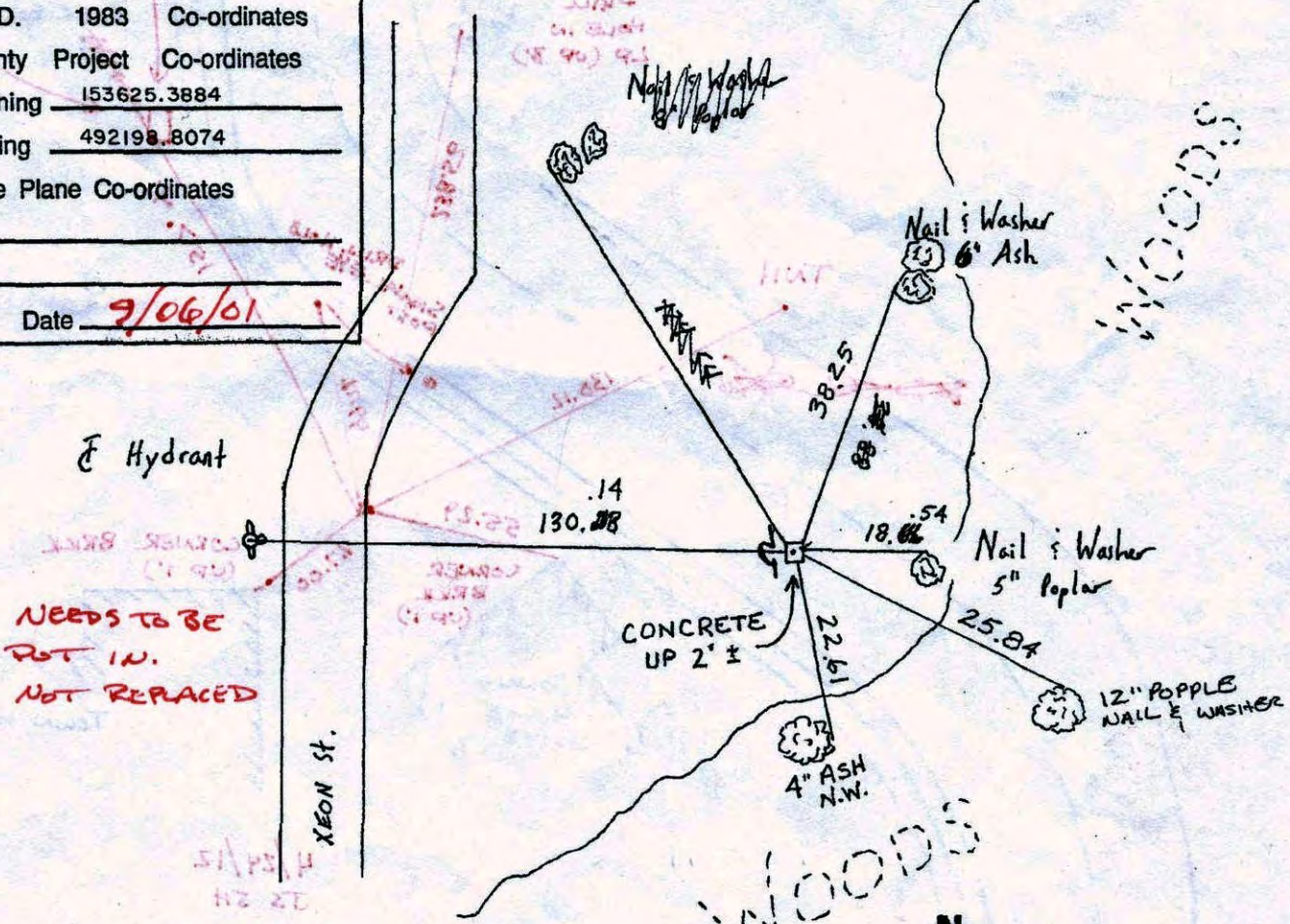
South $\frac{1}{4}$ Corner of Sec. 11 Township 31 Range 24

I hereby certify that on the 22 day of July, 1960, I found the described corner which was evidenced by Concrete

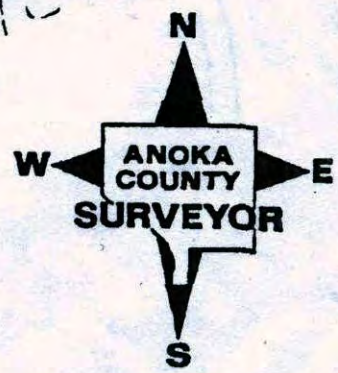
and I further certify that to perpetuate the location of said corner, I did, at the exact location thereof, place a permanent marker consisting of Concrete Monument w. Sign & Post on North^E Side (MON. UP 2' +/-)

which reference or witness monuments are located in the manner following:

N.A.D.	1983	Co-ordinates
County Project		Co-ordinates
Northing	<u>153625.3884</u>	
Easting	<u>492198.8074</u>	
State Plane Co-ordinates		
Y		
X		
Date	<u>9/06/01</u>	



Revised date	Revised date	Revised date
10-23-78	9-20-01	
7-10-80		
7-27-83		
12-30-83		
6-19-86		
8-21-90		
8-16-94		



Point Id	Point Class	Date/Time	Northing	Easting	Ellip. Hgt.	Ortho. Hgt.	Geoid Sep.
<input checked="" type="checkbox"/> HIGHWAY	Control	04/24/2012 12:13:25	166323.7776	491096.2544	-119.0334	897.2833	-1016.3166
<input checked="" type="checkbox"/> police	Control	04/24/2012 12:33:20	136555.7563	507561.1530	-102.4734	912.2075	-1014.6809
<input checked="" type="checkbox"/> CR49	Averaged	04/24/2012 13:17:55	153625.2374	492198.7849	-145.0490	870.6003	-1015.6493

!FBK file created by Field Data Extractor v3.4.1
!Date (creation): 2011/01/12 14:19:22
!Date (last modification): 2011/02/04 11:37:58
JOB "XEON ST"
UNITS USFOOT DMS !US Survey Foot
HORIZ ANGLE RIGHT
VERT ANGLE ZENITH
NEZ 8 153304.9900 492196.6100 0.0000 !Replaced point ID 0001
!GPS Reference station: NEZ 9 153302.8753 492202.4613 874.2177 !Replaced
point ID RTCM-Ref 0284
!GPS Reference station: NEZ 10 153312.7842 492190.5382 871.4004 !
Replaced point ID RTCM-Ref 0521

!Instrument Model: RX1250X Serial: 311827 Name: 1827
!Antenna height: 6.562
!NEZ 6 153304.4724 492196.4898 871.9111 "FDC 12263"
!NEZ 6 153304.4646 492196.4730 871.9179 "FDC 12263"
!NEZ 6 153304.4921 492196.4958 871.9008 "FDC 12263"
!NEZ 6 153304.4681 492196.4857 871.9093 "FDC 12263"
!NEZ 6 153304.4619 492196.4855 871.8914 "FDC 12263"
!NEZ 6 153304.4598 492196.4799 871.9160 "FDC 12263"
!NEZ 6 153304.4615 492196.4815 871.9081 "FDC 12263"
!NEZ 6 153304.4781 492196.4970 871.8932 "FDC 12263"
!NEZ 6 153304.4871 492196.4885 871.9158 "FDC 12263"
NEZ 6 153304.4720 492196.4865 871.9081 "FDC 12263" !Averaged point
!NEZ 6 153304.4777 492196.4894 871.9167 "FDC 12263"
!NEZ 7 153632.0277 492017.1153 869.6351 "FDO"
!NEZ 7 153632.0400 492017.1240 869.6595 "FDO"
!NEZ 7 153632.0206 492017.1099 869.6508 "FDO"
!NEZ 7 153632.0387 492017.1187 869.6669 "FDO"
!NEZ 7 153632.0261 492017.1199 869.6574 "FDO"
!NEZ 7 153632.0045 492017.1161 869.6370 "FDO"
!NEZ 7 153632.0218 492017.1224 869.6404 "FDO"
!NEZ 7 153631.9971 492017.1218 869.6346 "FDO"
NEZ 7 153632.0211 492017.1180 869.6500 "FDO" !Averaged point
!NEZ 7 153632.0146 492017.1092 869.7462 "FDO"

Drawing Name: coords
 Project Name: Misc Drawings
 Project Path: H:\Misc Drawings\
 Username: cfgitzen

Number	Northing	Easting	Elevation	Raw Desc	Full Desc
427	153610.0810	494802.3485	0.00	SW	SW
428	153625.3884 ✓	492198.8074 ✓	0.00	S1/4	S1/4 - CR49
429	153723.7169 ✓	489596.1393 ✓	0.00	SW	SW - CR50
439	151108.2239	489548.0265	0.00	E1/4	E1/4
440	150956.3550	494777.2691	0.00	W1/4	W1/4
444	148334.6945	494790.5492	0.00	SW	SW
445	148365.0394 ✓	492162.7899 ✓	0.00	N1/4	N1/4 - CR67
446	148443.4130	489522.8802	0.00	SE	SE
5001	153304.4720 ✓	492196.4860 ✓	871.92	FDC 12263	FDC 12263
5002	153632.0210 ✓	492017.1170 ✓	869.66	FDO	FDO
5003	153625.1298 ✓	492198.7809 ✓	.	CR49 Per Tra	CR49 Per Tra

XEON ST.txt

0001,153304.989,492196.609,0.000,
RTCM-Ref 0284,153302.875,492202.461,874.217,
RTCM-Ref 0521,153312.784,492190.538,871.400,
6,153304.472,492196.489,871.911,FDC 12263
6,153304.464,492196.472,871.917,FDC 12263
6,153304.492,492196.495,871.900,FDC 12263
6,153304.468,492196.485,871.909,FDC 12263
6,153304.461,492196.485,871.891,FDC 12263
6,153304.459,492196.479,871.916,FDC 12263
6,153304.461,492196.481,871.908,FDC 12263
6,153304.478,492196.496,871.893,FDC 12263
6,153304.487,492196.488,871.915,FDC 12263
6,153304.471,492196.486,871.908,FDC 12263
6,153304.477,492196.489,871.916,FDC 12263
7,153632.027,492017.115,869.635,FDO
7,153632.039,492017.124,869.659,FDO
7,153632.020,492017.109,869.650,FDO
7,153632.038,492017.118,869.666,FDO
7,153632.026,492017.119,869.657,FDO
7,153632.004,492017.116,869.637,FDO
7,153632.021,492017.122,869.640,FDO
7,153631.997,492017.121,869.634,FDO
7,153632.021,492017.117,869.649,FDO
7,153632.014,492017.109,869.746,FDO
RTCM-Ref 0168,153725.093,492098.439,862.216,
RTCM-Ref 0983,154403.058,492239.334,868.608,
13,154635.107,492254.615,873.414,FDC 14376
13,154635.105,492254.619,873.427,FDC 14376
13,154635.109,492254.619,873.408,FDC 14376
13,154635.103,492254.621,873.422,FDC 14376
13,154635.106,492254.619,873.415,FDC 14376
13,154635.106,492254.623,873.403,FDC 14376
12,154985.306,492260.123,874.654,FDC 13057
12,154985.299,492260.132,874.656,FDC 13057
12,154985.279,492260.126,874.607,FDC 13057
12,154985.287,492260.103,874.633,FDC 13057
12,154985.288,492260.119,874.636,FDC 13057
12,154985.281,492260.109,874.636,FDC 13057
11,154608.120,492174.153,872.970,FDO
11,154608.136,492174.150,872.971,FDO
11,154608.128,492174.159,872.964,FDO
11,154608.118,492174.155,872.952,FDO
11,154608.123,492174.157,872.961,FDO
11,154608.113,492174.166,872.948,FDO
10,154472.713,492171.908,872.139,FDO 1INCH
10,154472.699,492171.916,872.141,FDO 1INCH

XEON ST.txt

10,154472.723,492171.917,872.164,FDO 1INCH
10,154472.727,492171.911,872.138,FDO 1INCH
10,154472.714,492171.913,872.153,FDO 1INCH
10,154472.711,492171.916,872.176,FDO 1INCH
9,154412.403,492170.983,871.938,FDO
9,154412.429,492170.976,871.966,FDO
9,154412.418,492170.986,871.998,FDO
9,154412.419,492170.981,871.976,FDO
9,154412.417,492170.980,871.976,FDO
9,154412.419,492170.972,871.992,FDO
8,154271.539,492168.874,869.062,FDO
8,154271.563,492168.863,869.065,FDO
8,154271.529,492168.875,869.022,FDO
8,154271.554,492168.863,869.048,FDO
8,154271.553,492168.868,869.054,FDO
8,154271.572,492168.867,869.068,FDO
49,153625.103,492198.750,870.325,FDPK
49,153625.119,492198.747,870.333,FDPK
49,153625.111,492198.749,870.332,FDPK
49,153625.107,492198.748,870.325,FDPK
49,153625.098,492198.760,870.353,FDPK
49,153625.103,492198.760,870.338,FDPK
49,153625.106,492198.754,870.342,FDPK
49,153625.115,492198.750,870.326,FDPK
49,153625.118,492198.756,870.357,FDPK
49,153625.110,492198.752,870.338,FDPK
49,153625.119,492198.749,870.359,FDPK

!FBK file created by Field Data Extractor v3.7.0

!Date (creation): 2011/01/12 14:19:22

!Date (last modification): 2012/03/28 08:19:04

JOB "XEON ST"

UNITS USFOOT DMS !US Survey Foot

HORIZ ANGLE RIGHT

VERT ANGLE ZENITH

NEZ 50 153304.9900 492196.6100 0.0000 !Replaced point ID 0001

!GPS Reference station: NEZ 51 153302.8753 492202.4613 874.2177 !

Replaced point ID RTCM-Ref 0284

!GPS Reference station: NEZ 52 153312.7842 492190.5382 871.4004 !

Replaced point ID RTCM-Ref 0521

!Instrument Model: RX1250X Serial: 311827 Name: 1827

!Antenna height: 6.562

!NEZ 6 153304.4724 492196.4898 871.9111 "FDC 12263"

!NEZ 6 153304.4646 492196.4730 871.9179 "FDC 12263"

!NEZ 6 153304.4921 492196.4958 871.9008 "FDC 12263"

!NEZ 6 153304.4681 492196.4857 871.9093 "FDC 12263"

!NEZ 6 153304.4619 492196.4855 871.8914 "FDC 12263"

!NEZ 6 153304.4598 492196.4799 871.9160 "FDC 12263"

!NEZ 6 153304.4615 492196.4815 871.9081 "FDC 12263"

!NEZ 6 153304.4781 492196.4970 871.8932 "FDC 12263"

!NEZ 6 153304.4871 492196.4885 871.9158 "FDC 12263"

NEZ 6 153304.4720 492196.4865 871.9081 "FDC 12263" !Averaged point

!NEZ 6 153304.4777 492196.4894 871.9167 "FDC 12263"

!NEZ 7 153632.0277 492017.1153 869.6351 "FDO"

!NEZ 7 153632.0400 492017.1240 869.6595 "FDO"

!NEZ 7 153632.0206 492017.1099 869.6508 "FDO"

!NEZ 7 153632.0387 492017.1187 869.6669 "FDO"

!NEZ 7 153632.0261 492017.1199 869.6574 "FDO"

!NEZ 7 153632.0045 492017.1161 869.6370 "FDO"

!NEZ 7 153632.0218 492017.1224 869.6404 "FDO"

!NEZ 7 153631.9971 492017.1218 869.6346 "FDO"

NEZ 7 153632.0211 492017.1180 869.6500 "FDO" !Averaged point

!NEZ 7 153632.0146 492017.1092 869.7462 "FDO"

!GPS Reference station: NEZ 53 153725.0939 492098.4398 862.2168 !

Replaced point ID RTCM-Ref 0168

!GPS Reference station: NEZ 54 154403.0581 492239.3342 868.6083 !

Replaced point ID RTCM-Ref 0983

!Instrument Model: RX1250X Serial: 311827 Name: 1827

!NEZ 13 154635.1072 492254.6158 873.4149 "FDC 14376"

!NEZ 13 154635.1051 492254.6192 873.4275 "FDC 14376"

!NEZ 13 154635.1094 492254.6194 873.4083 "FDC 14376"

!NEZ 13 154635.1034 492254.6212 873.4226 "FDC 14376"

NEZ 13 154635.1063 492254.6198 873.4155 "FDC 14376" !Averaged point

!NEZ 13 154635.1065 492254.6231 873.4035 "FDC 14376"

!NEZ 12 154985.3067 492260.1236 874.6542 "FDC 13057"

!NEZ 12 154985.2998 492260.1322 874.6566 "FDC 13057"

!NEZ 12 154985.2790 492260.1262 874.6077 "FDC 13057"

!NEZ 12 154985.2880 492260.1031 874.6338 "FDC 13057"

NEZ 12 154985.2889 492260.1192 874.6367 "FDC 13057" !Averaged point

!NEZ 12 154985.2813 492260.1098 874.6367 "FDC 13057"

!NEZ 11 154608.1210 492174.1539 872.9701 "FDO"

!NEZ 11 154608.1369 492174.1503 872.9720 "FDO"

!NEZ 11 154608.1289 492174.1595 872.9641 "FDO"

!NEZ 11 154608.1190 492174.1557 872.9530 "FDO"

NEZ 11 154608.1234 492174.1575 872.9611 "FDO" !Averaged point

!NEZ 11 154608.1140 492174.1669 872.9488 "FDO"

!NEZ 10 154472.7139 492171.9085 872.1392 "FDO 1INCH"

!NEZ 10 154472.6993 492171.9166 872.1419 "FDO 1INCH"
!NEZ 10 154472.7238 492171.9173 872.1640 "FDO 1INCH"
!NEZ 10 154472.7278 492171.9119 872.1386 "FDO 1INCH"
NEZ 10 154472.7146 492171.9140 872.1533 "FDO 1INCH" !Averaged point
!NEZ 10 154472.7119 492171.9165 872.1762 "FDO 1INCH"
!NEZ 9 154412.4036 492170.9838 871.9382 "FDO"
!NEZ 9 154412.4291 492170.9762 871.9663 "FDO"
!NEZ 9 154412.4184 492170.9864 871.9984 "FDO"
!NEZ 9 154412.4194 492170.9812 871.9761 "FDO"
NEZ 9 154412.4175 492170.9805 871.9761 "FDO" !Averaged point
!NEZ 9 154412.4197 492170.9722 871.9920 "FDO"
!NEZ 8 154271.5397 492168.8745 869.0621 "FDO"
!NEZ 8 154271.5632 492168.8637 869.0651 "FDO"
!NEZ 8 154271.5298 492168.8756 869.0227 "FDO"
!NEZ 8 154271.5549 492168.8635 869.0490 "FDO"
NEZ 8 154271.5538 492168.8690 869.0547 "FDO" !Averaged point
!NEZ 8 154271.5729 492168.8679 869.0682 "FDO"
!NEZ 49 153625.1035 492198.7507 870.3255 "FDPK"
!NEZ 49 153625.1195 492198.7475 870.3335 "FDPK"
!NEZ 49 153625.1112 492198.7495 870.3323 "FDPK"
!NEZ 49 153625.1071 492198.7489 870.3250 "FDPK"
!NEZ 49 153625.0986 492198.7607 870.3537 "FDPK"
!NEZ 49 153625.1040 492198.7607 870.3387 "FDPK"
!NEZ 49 153625.1064 492198.7549 870.3422 "FDPK"
!NEZ 49 153625.1158 492198.7504 870.3267 "FDPK"
!NEZ 49 153625.1181 492198.7569 870.3573 "FDPK"
NEZ 49 153625.1101 492198.7529 870.3389 "FDPK" !Averaged point
!NEZ 49 153625.1192 492198.7500 870.3597 "FDPK"

3/30/2012
Coon Rapids

N 1/4 Cor
Sec 11

Sec 11

40.03

40.03

40.00
USED

40.12

40.10

40.00
USED

Position using
these 2 lines

2604.44 INV.

181.75 Plat
181.73 INV.

0.02

Published
Position

0.25

0.01

Transit
Ties

2603.675 INV.

NE Cor
Sec 14

2721.277 } Published
1360.639 }
2721.536 } Transit
1360.768 } Ties
1360.73 sand
Creek

NW Cor
Sec 14
Used

Sec 14

320.68

0.04

5260.23 INV.

S 1/4 Cor Sec 14

6671.9130
7584.0672 * 3001

I 96

5388.704
I-96

Sec 11

1283.5819
7647.4628 * 3002

2609.4346 I-96

5 1/4 Co.

2609.428 I-114

2603.4888 I-96

2603.577 I-114

Sec 14

35109.1814
22026.3626 * 3003

I-114
5259.99

I 114

29849.3070
22061.2477 * 3004

Drawing Name: s qtr corner sec 11 coon rapids
 Project Name: Xeon
 Project Path: H:\Xeon\
 Username: cfgitzen

Number	Northing	Easting	Elevation	Raw Desc	Full Desc
408	158913.7621 ✓	494879.9780 ✓	0.00	SW	SW
409	159013.2932 ✓	492284.3774 ✓	0.00	S1/4	S1/4
410	159114.8237 ✓	489702.2096 ✓	0.00	SW	SW
422	156430.3562 ✓	489660.6358 ✓	0.00	W1/4	W1/4
423	156261.7682 ✓	494839.4034 ✓	0.00	E1/4	E1/4
427	153610.0810 ✓	494802.3485 ✓	0.00	SW	SW
428	153625.3884 ✓	492198.8074 ✓	0.00	S1/4	S1/4
429	153723.7169 ✓	489596.1393 ✓	0.00	SW	SW
439	151108.2239 ✓	489548.0265 ✓	0.00	E1/4	E1/4
440	150956.3550 ✓	494777.2691 ✓	0.00	W1/4	W1/4
443	148368.9949 ✓	497436.1709 ✓	0.00	S1/4	S1/4
444	148334.6945 ✓	494790.5492 ✓	0.00	SW	SW
445	148365.0394 ✓	492162.7899 ✓	0.00	N1/4	N1/4
446	148443.4130 ✓	489522.8802 ✓	0.00	SE	SE
3001	6671.9130	7584.0672	0.00		
3002	1283.5819	7647.4628	0.00		
3003	35109.1814	22026.3626	0.00		
3004	29849.3070	22061.2477	0.00		
5001	153304.4720	492196.4860	871.92	FDC 12263	FDC 12263
5002	153632.0210	492017.1170	869.66	FDO	FDO
5003	153625.1298	492198.7809	0.00		
5004	154271.5538	492168.8690	869.06	FDO	FDO
5005	154412.4175	492170.9805	871.98	FDO	FDO
5006	154472.7146	492171.9140	872.15	FDO 1INCH	FDO 1INCH
5007	154608.1234	492174.1575	872.96	FDO	FDO
5008	154985.2889	492260.1192	874.64	FDC 13057	FDC 13057
5009	154635.1063	492254.6198	873.42	FDC 14376	FDC 14376
5010	153625.1101	492198.7529	870.36	FDPK	FDPK

#410

31

#409

30

#408

29

#422

12

Sec 11

#423

11

#429

50

#428

49

#427

48

#439

60

Sec 14

#440

61

#446

68

#445

67

#444

66

6	153304.472	492196.489	871.911 FDC 12263	
6	153304.464	492196.472	871.917 FDC 12263	
6	153304.492	492196.495	871.9 FDC 12263	
6	153304.468	492196.485	871.909 FDC 12263	
6	153304.461	492196.485	871.891 FDC 12263	
6	153304.459	492196.479	871.916 FDC 12263	
11	6	153304.461	492196.481	871.908 FDC 12263
6	153304.478	492196.496	871.893 FDC 12263	
6	153304.487	492196.488	871.915 FDC 12263	
6	153304.471	492196.486	871.908 FDC 12263	
6	153304.477	492196.489	871.916 FDC 12263	
	1686349.19	5414161.345	9590.984	
	153304.472	492196.486	871.91	
7	153632.027	492017.115	869.635 FDO	
7	153632.039	492017.124	869.659 FDO	
7	153632.02	492017.109	869.65 FDO	
7	153632.038	492017.118	869.666 FDO	
7	153632.026	492017.119	869.657 FDO	
10	7	153632.004	492017.116	869.637 FDO
7	153632.021	492017.122	869.64 FDO	
7	153631.997	492017.121	869.634 FDO	
7	153632.021	492017.117	869.649 FDO	
7	153632.014	492017.109	869.746 FDO	
	1536320.207	4920171.17	8696.573	
	153632,021	492017.117	869.66	

James Winter

Static location
to
County Coord 0.260
 $N05^{\circ}51'03''E$

53.93
52.89
74.93
-181.75

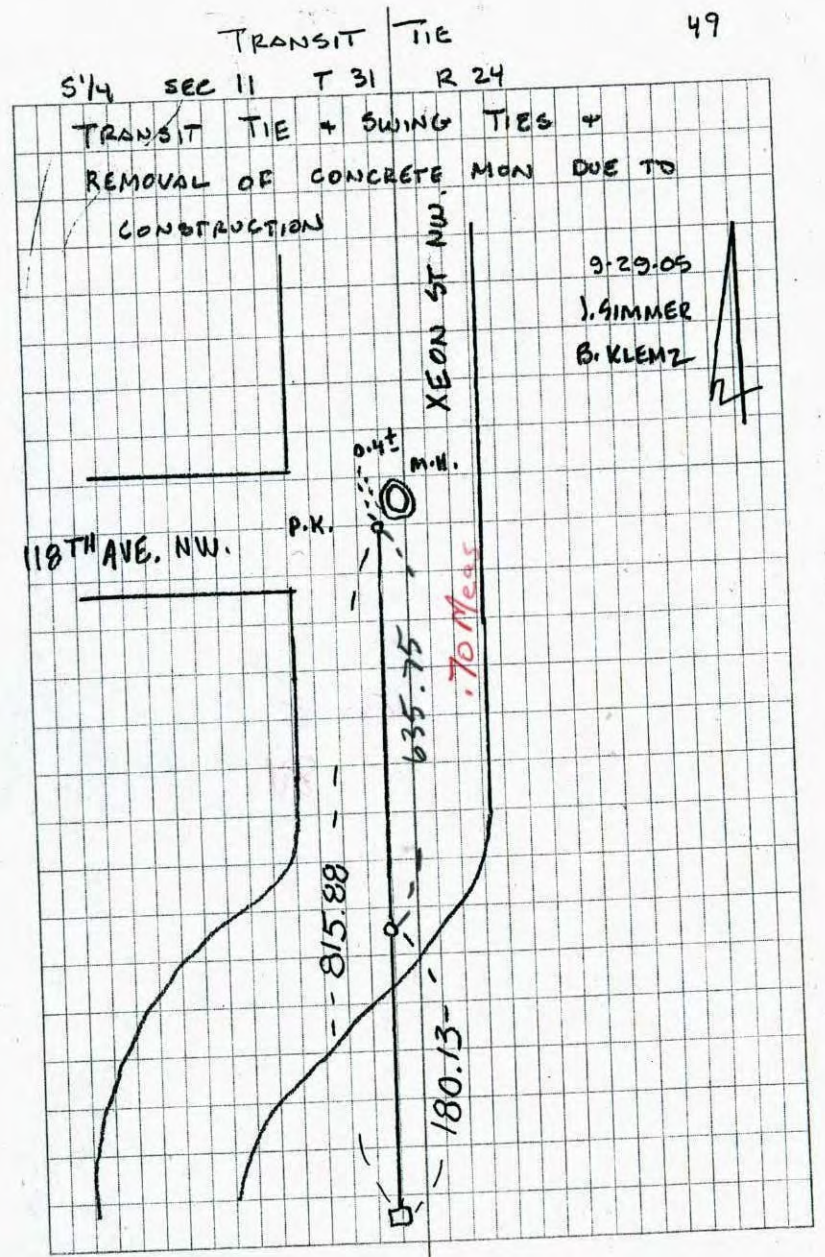
181.811 Inu.; Fd to County Coord.
181.69 intersection pt
181.795 to static location

320.925 Inu.; Fd to County Coord.
320.34 Plat
320.68 Int. Pt
320.665 Inu. to static location

- VRS N 1/4 Cor Sec 11
 - Check Kurth's ties
 - If these check
 then set monument
 in transit tie location

7 1/2
 815.88
 180.13
 635.75

orange pipe
 0.5 to 0.8'



Point Id	Point Class	Date/Time	Northing	Easting	Ellip. Hgt.	Ortho. Hgt.	Geoid Sep.
<input checked="" type="checkbox"/> GOVERNMENT	Control	01/05/2011 09:35:55	159615.4529	469038.3163	-39.2796	977.2750	-1016.5546
<input checked="" type="checkbox"/> highway	Control	01/05/2011 10:05:40	166323.7776	491096.2544	-119.0334	897.2833	-1016.3166
<input checked="" type="checkbox"/> CR12	Averaged	01/05/2011 11:27:35	164602.6011	471333.2728	-138.8832	877.8355	-1016.7187
<input checked="" type="checkbox"/> CR49	Averaged	01/05/2011 14:33:30	153625.1298	492198.7809	-144.9633	870.6860	-1015.6493

FAX

Kurth Surveying, Inc.
 4002 Jefferson St. N.E. Columbia Heights, MN 55421
 Phone (763) 788-9769 Fax (763) 788-7602 kurthsurvey@aol.com

Date: 4 18 07
 Page(s) _____
 (Inclusive)

To: ANOKA CO. SURVEYORS OFFICE
 FAX: 323-5418

From: RANDY KURTH

Remarks:

~~FYI~~ - THESE ARE OUR FIELD CROWN TIES TO THIS MON'T.
 A LOT OF CONST. HAS HAPPENED AROUND THIS MONUMENT
 BUT IT APPEARED UNDISTURBED - JUST BURIED.

IF UNREADABLE - PLEASE NOTIFY US IMMEDIATELY - THANK YOU

1/4 CORNER - SECTION 14-31-24

251.921
55.06
35.88

CONC. MONT.

Set 1/2" pipe (SHORT)
OVER CONC. MONT.
(down 1')

W. SIDE
T.M.H.

R.M.H.



130.16
130.22

35.88
36.05
(CENTER M.H.)

UP 4"
25"
WO. ~~GONE~~



268.01



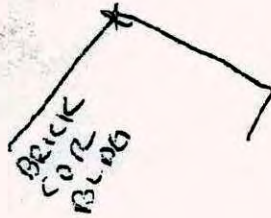
10"
CE.



161.18
55.06
55.24

25.94
26.88

MULT. ~~GONE~~



BRICK CORE
BLDG

4/05/12
JS SH
-CHECKED KURT
SWINGTIES.
-TAPED DISTANCES
CIRCLED.

CERTIFICATE OF LOCATION OF GOVERNMENT CORNER

County of Anoka

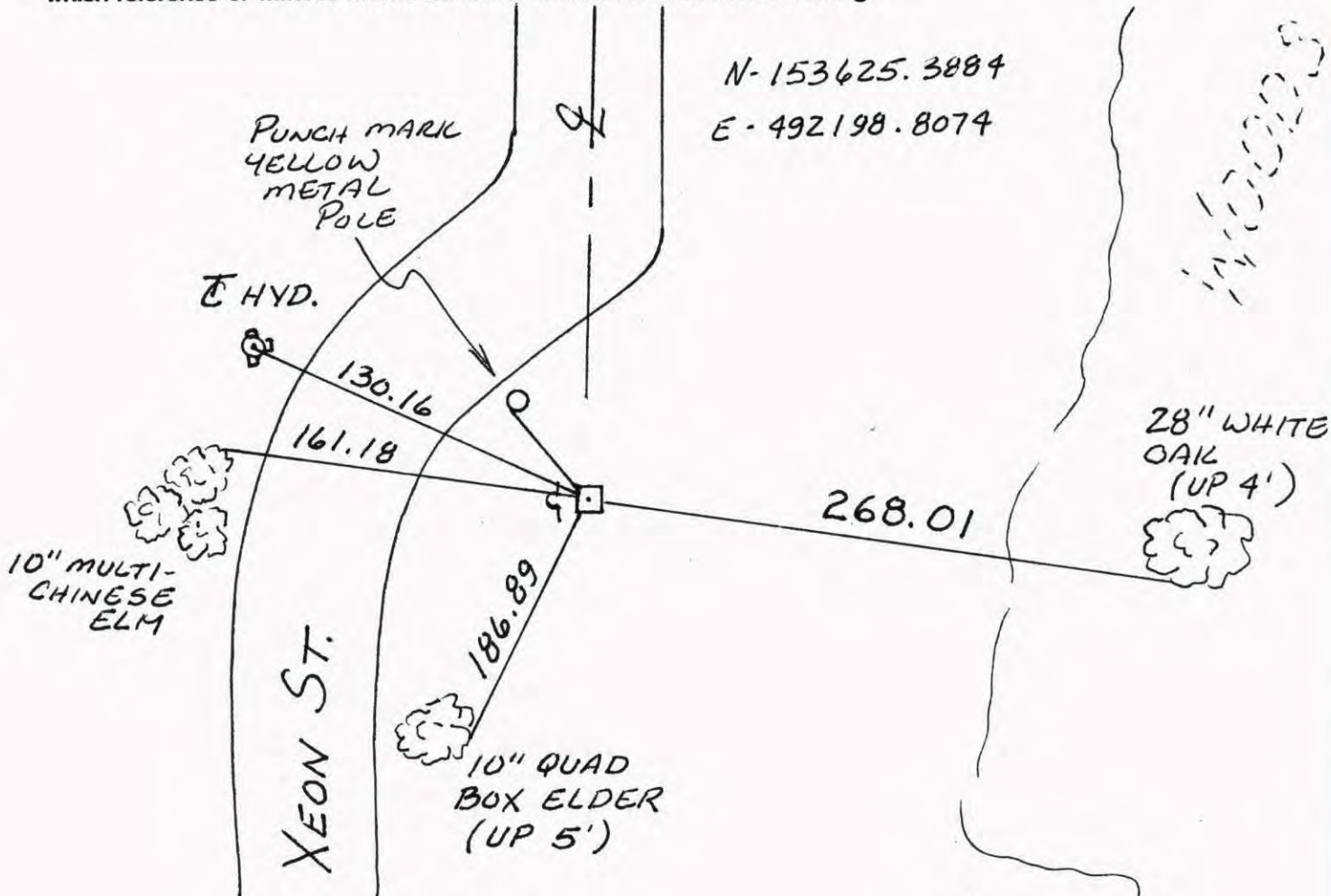
State of Minnesota

SOUTH $\frac{1}{4}$ Corner of Sec. 11 Township 31 Range 24

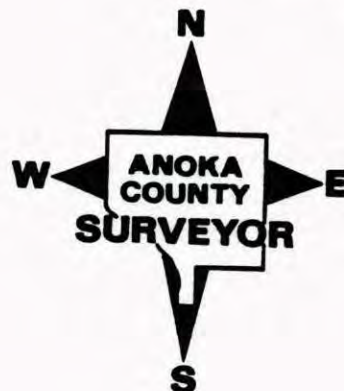
I hereby certify that on the 22 day of JULY, 19 60, I found the described corner which was evidenced by CONCRETE

and I further certify that to perpetuate the location of said corner, I did, at the exact location thereof, place a permanent marker consisting of CONCRETE MONUMENT W. SIGN & POST E. SIDE (MON. UP 2' +/-)

which reference or witness monuments are located in the manner following:

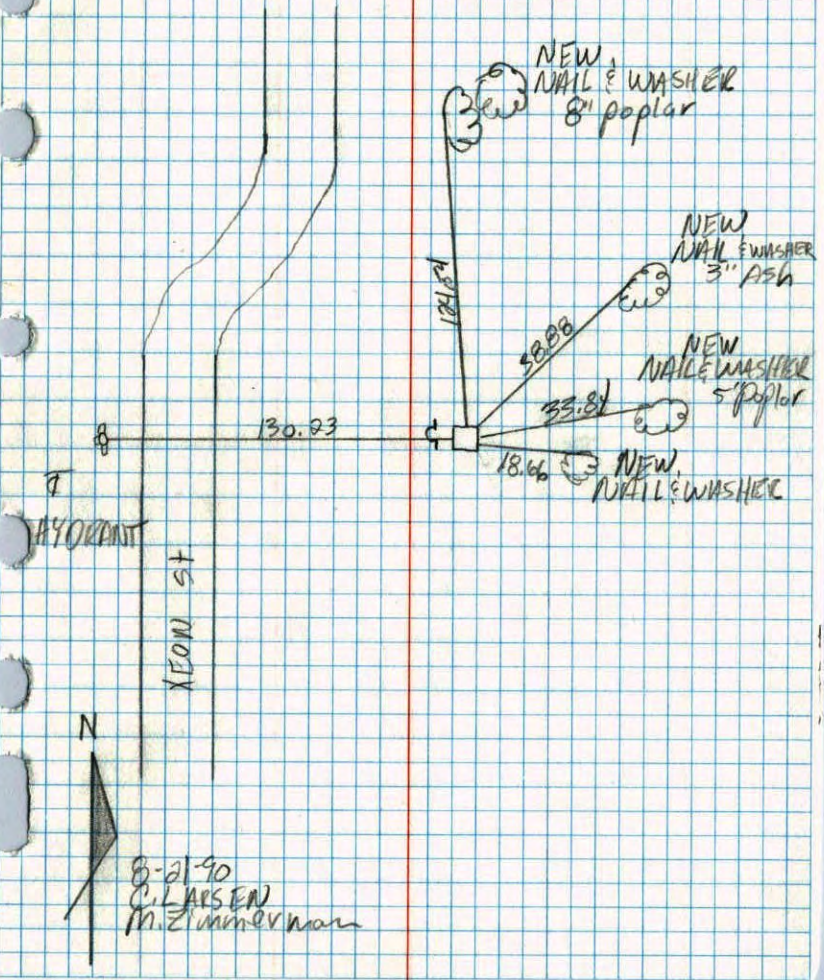


Revised date	Revised date	Revised date
6-19-86		
8-21-90		
8-16-94		
9-20-01		
9-29-05		



South 1/4 sec. 11 T31 R24

Retired concrete monument
put in sign and post on East side

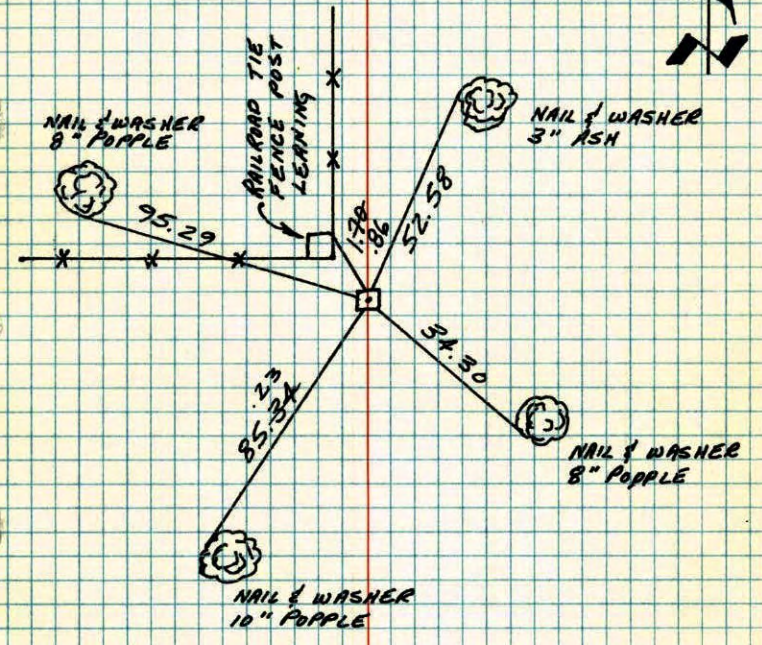


8-21-90
C. L. ARSEN
M. Zimmerman

S 1/4 COR. SECTION 11-T31-R24

FOUND CONCRETE LEARNING WITH TIES GONE.
STRAIGHTENED CONCRETE AND TIED.

23 OCT 78
H. LARSON
B. GUSTAKO
P. HAGLAK



TIE CHECK
7-10-80
B. STEPHENS
P. ROSS
P. HORNBY

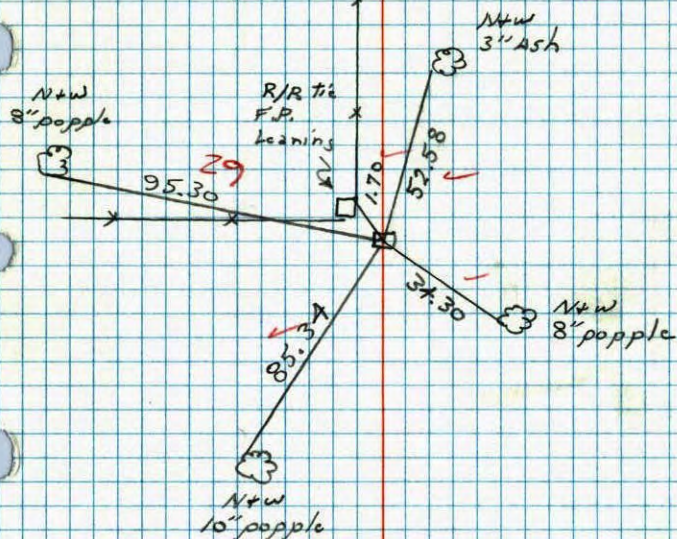
TEMPERATURE CORRECTED
AND HORIZONTALLY
TAPED MEASUREMENTS

ROLAND W. ANDERSON
COUNTY SURVEYOR
ANOKA COUNTY, MINNESOTA

S 1/4 Cor. Section 11 T31 R24

Found concrete leanings with ties gone. strashtered ant tied

*1 50°
10-23-78
M. Larson
P. Gutfako
D. Nojak



NO. 448

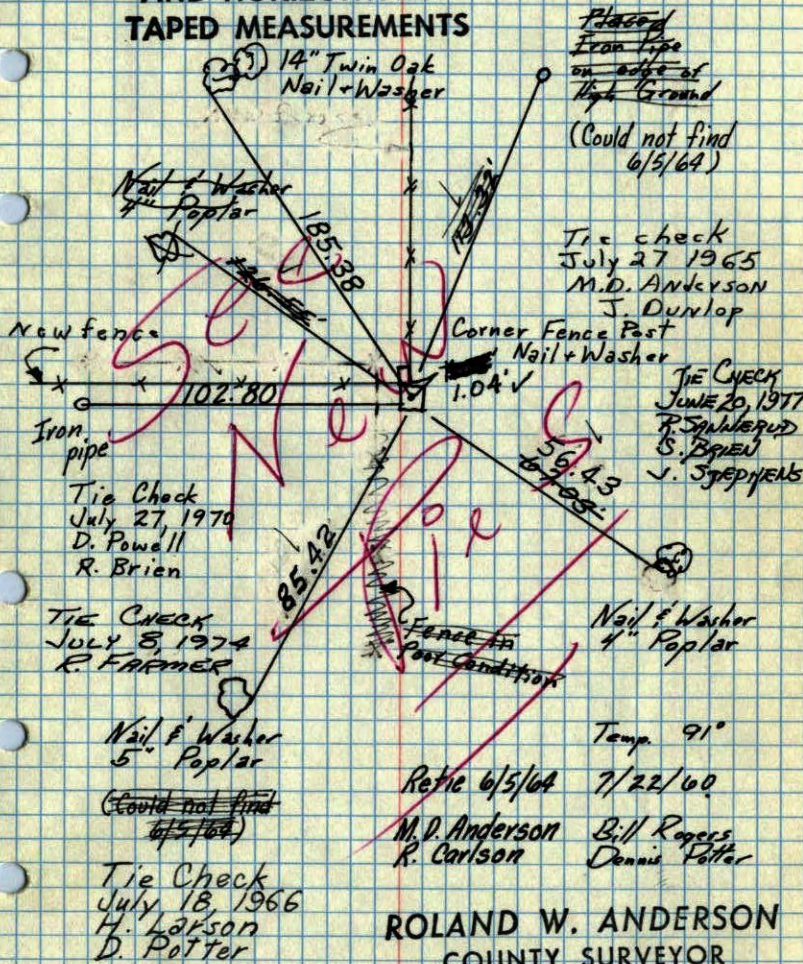
TELEPHONE

S 1/4 Cor. Sec. 11 - T31 - R24

Conc. Man. up 1.5'

mon. 0.4' ± South of new fence corner.

TEMPERATURE CORRECTED
AND HORIZONTALLY
TAPED MEASUREMENTS



Placed Iron Pipe on edge of High Ground (Could not find 6/5/64.)

Tie check July 27 1965
M.D. Anderson
J. Dunlop

TIE CHECK
JUNE 20, 1977
R. SANDBERG
S. BROWN
J. STEPHENS

Tie Check July 27, 1970
D. Powell
R. Brien

TIE CHECK
JULY 8, 1974
R. FARMER

Nail + Washer 5" Poplar
(Could not find 6/5/64.)

Tie Check July 18, 1966
H. Larson
D. Potter

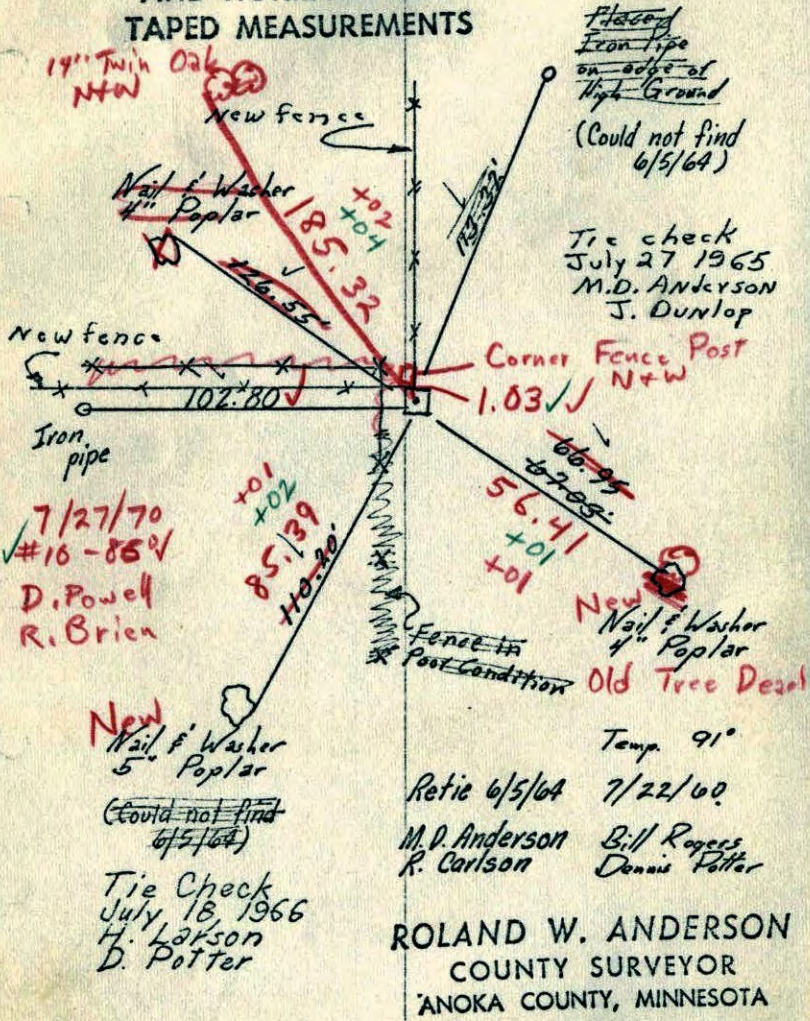
ROLAND W. ANDERSON
COUNTY SURVEYOR
ANOKA COUNTY, MINNESOTA

S/W Cor. Sec. 11 - T31 - R24

Conc. Mon. up 1.5'

Mon. 0.4' ± South of new Fence corner.

TEMPERATURE CORRECTED
AND HORIZONTALLY
TAPED MEASUREMENTS

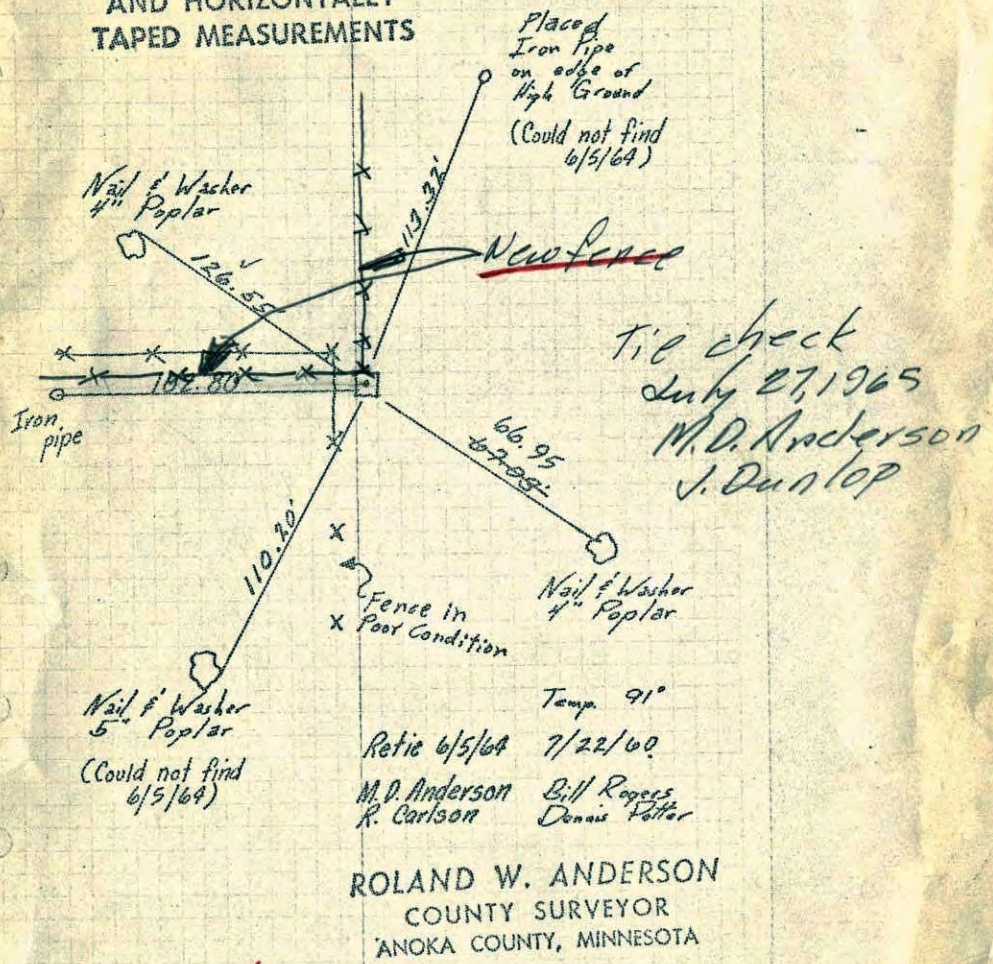


S/W Cor. Sec. 11 - T31 - R24

Conc. Mon. up 1.5'

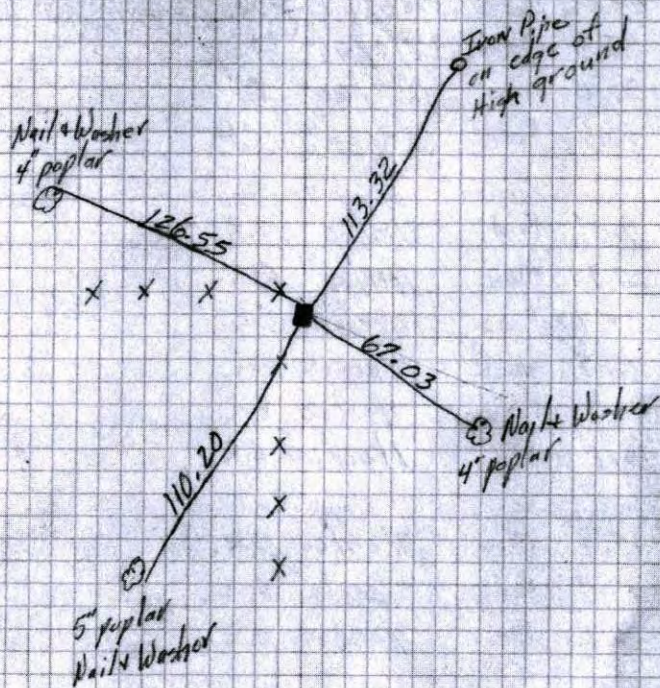
Mon 0.4' ± So. of new fence cor.

TEMPERATURE CORRECTED
AND HORIZONTALLY
TAPED MEASUREMENTS



Entered H.L.

S¹/₄ Con. Sec. 11 + 31 R 24
 Con. Mon Up 1 1/2'



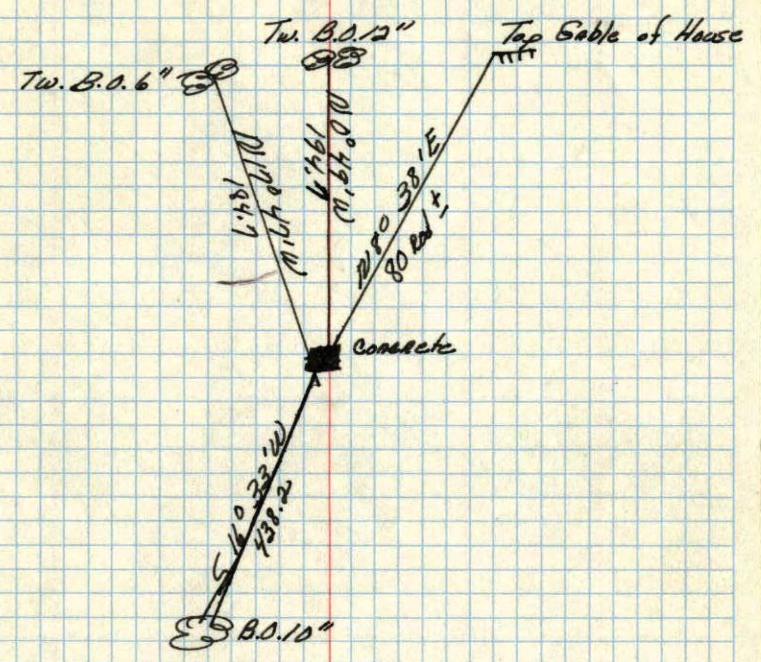
Temp 91°
 7/22/60
 Bill Rogers
 Jenny Peter

47.1	Fri	7/1/60	Fr.
25.4	Tues	7/5/60	C.R.
38.3	Wed	7/6/60	C.R.
31.0	Thru	7/7/60	Bl.
52.6	Frid	7/8/60	C.H.

9.5'	Frid	7/15/60	C.R.
20.3	Mon	7/18/60	C.R.
35.9	Tues	7/19/60	C.R.
33.5	Wed	7/20/60	Fri.
36.7	thru	7/21/60	Fri.
16.1	Fri	7/22/60	C.R.

27.14	15.2	Mon	7/25/60	C.R.
	39.9	thru	7/28/60	H, L.
21.71	21.1	Fri	7/29/60	C.R.

S¹/₄ Sec. Corner of Sec. 11 T. 31 R. 24
Concrete Monument



Nov. 26, 1943
Cartwright