

CERTIFICATE OF LOCATION OF GOVERNMENT CORNER

County of Anoka

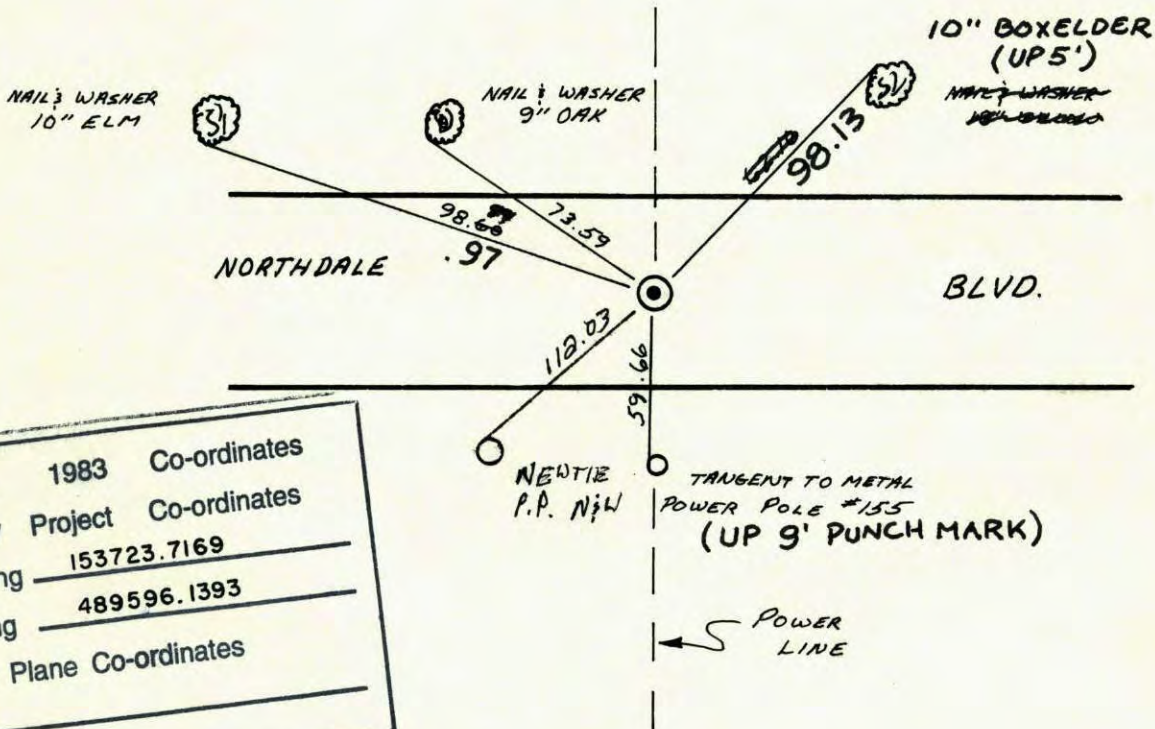
State of Minnesota

SOUTHWEST Corner of Sec. 11 Township 31 Range 24

I hereby certify that on the 5 day of JUNE, 1965, I found the described corner which was evidenced by CONCRETE

and I further certify that to perpetuate the location of said corner, I did, at the exact location thereof, place a permanent marker consisting of CAST IRON MONUMENT

which reference or witness monuments are located in the manner following:



N.A.D.	1983	Co-ordinates
County	Project	Co-ordinates
Northing	<u>153723.7169</u>	
Easting	<u>489596.1393</u>	
State Plane Co-ordinates		
Y	_____	
X	_____	
Date	_____	

Revised date	By	CHECKED
6-5-64	M.A. R.C.	8-11-94
7-13-66	H.L. D.P.	8-3-01
6-22-70	D.P. B.B. W.W.	
7-8-74	R.F. ND. D.D.	
6-21-77	R.S. S.B. J.S.	
7-22-83	P.R. J.B.	
REDRAWN 12-30-83	R. KREUSER	
6-13-86	D. ROSS	

Minnesota State Plane Coordinates
South Zone

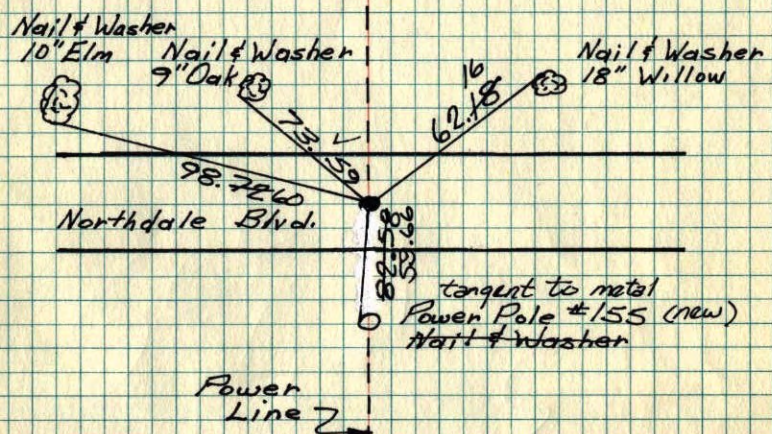
Y _____ X _____

_____, _____
County Surveyor Date

Registered Land Surveyor No. _____

S.W. Cor. Sec. 11, T31, R 24

Cast Iron Monument Flush 2'±
South Of Centerline, Pk's 2.00'
North & East



Ties Checked
June 5, 1964
M. D. Anderson
R. Carlson

Tie Check
July 13, 1966
H. Larson
D. Potter

TIE CHECK
JUNE 21, 1977
F. SANNEERUD
S. BRIEN
J. STEPHENS

Tie Check
June 22, 1970
D. Powell
B. Brien
W. Weslander

Tie Check
July 8, 1974
R. Farmer
N. Dahl
D. Dahl

ROLAND W. ANDERSON COUNTY SURVEYOR ANOKA COUNTY, MINNESOTA
TEMPERATURE CORRECTED AND HORIZONTALLY TAPED MEASUREMENTS

CERTIFICATE OF LOCATION OF GOVERNMENT CORNER

NORTHEAST Corner of Section 15, Township 31N, Range 24 W, 4th P.M.

STATE OF MINNESOTA, County of ANOKA

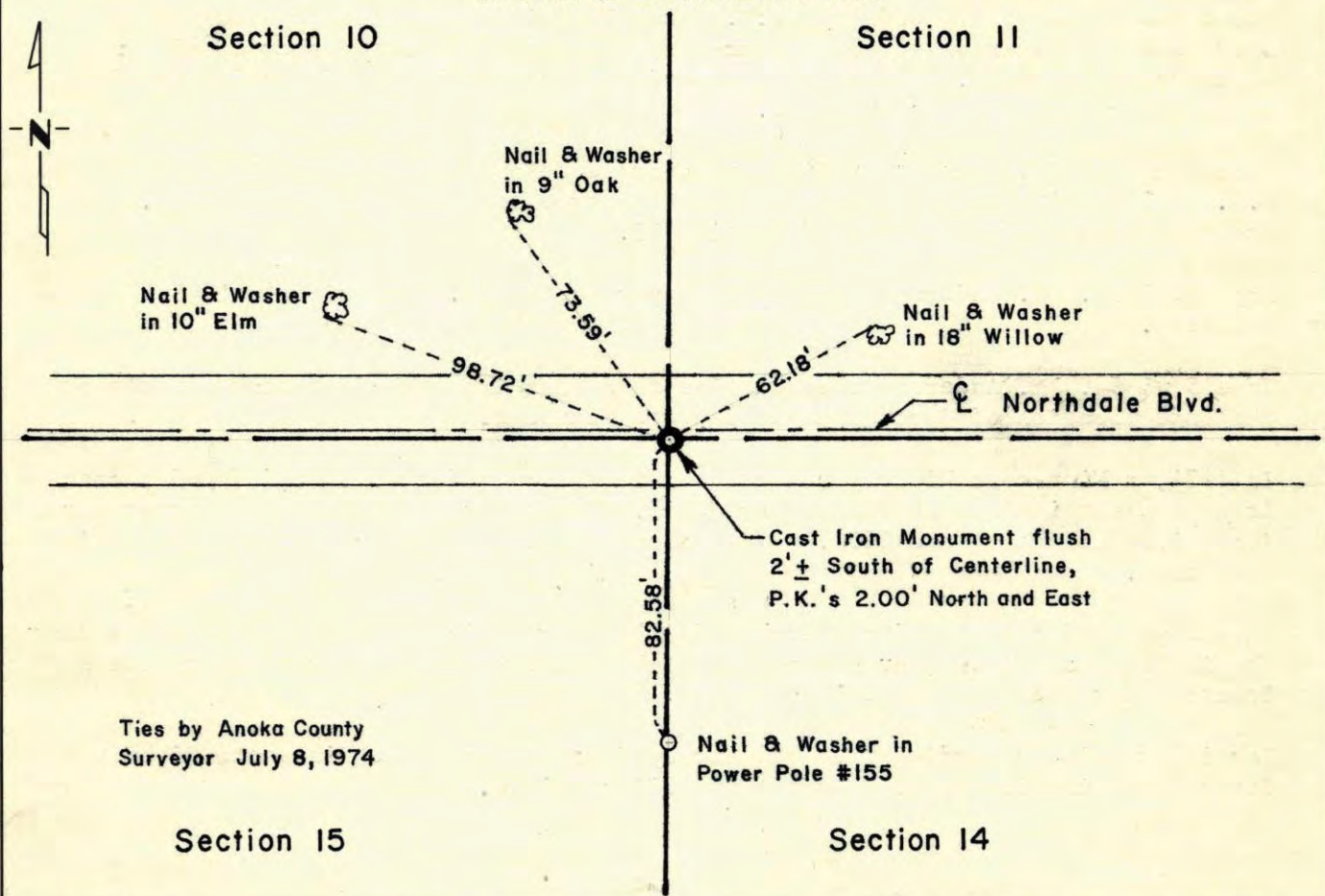
At the corner location shown on the sketch:

On 1974 found a Cast Iron Monument
DATE

left monument as found, lowered monument, removed monument (explain)

On _____ placed a _____
DATE

SKETCH OF REFERENCE TIES



Statement of evidence relative to this corner location is on back of page.

I hereby certify that this document and the data contained herein was prepared by me or under my direct supervision.

John E. Sullivan 9-26-75
SIGNATURE DATE

Registration No. 10460

Land Surveyor, Professional Engineer

County Surveyor, County Engineer

OFFICE OF THE REGISTER OF DEEDS

County of _____

I hereby certify that this document was filed in the Reg. of Deeds office at _____ .M. on the _____ day of _____ A.D., 19 _____

Register of Deeds _____

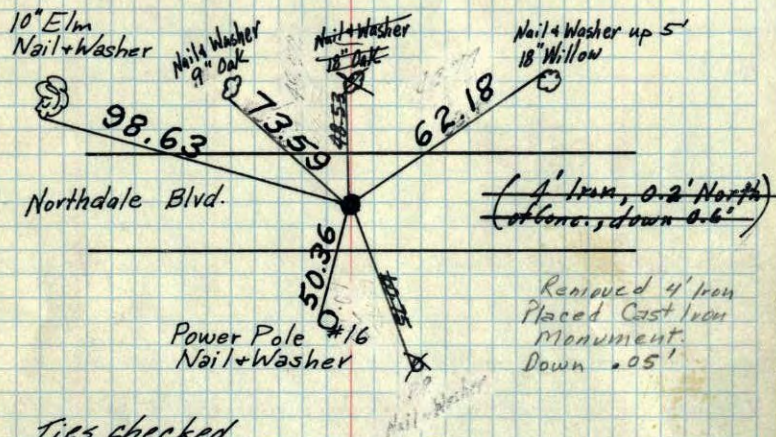
By _____, Deputy

DOCUMENT NO. _____

SW Corner Sec. 11 T31 R24

~~Con. Mon. down 2'~~

Cast Iron Monument flush
2'± South of Centerline
PK's 2.00' North + East.



Ties checked
June 5, 1964
M. O. Anderson
R. Carlson

Tie Check
July 13, 1966
H. Larson
D. Potter

Tie Check
June 22, 1970
D. Powell
R. Brien
W. Westlander

TEMPERATURE CORRECTED
AND HORIZONTALLY
TAPED MEASUREMENTS

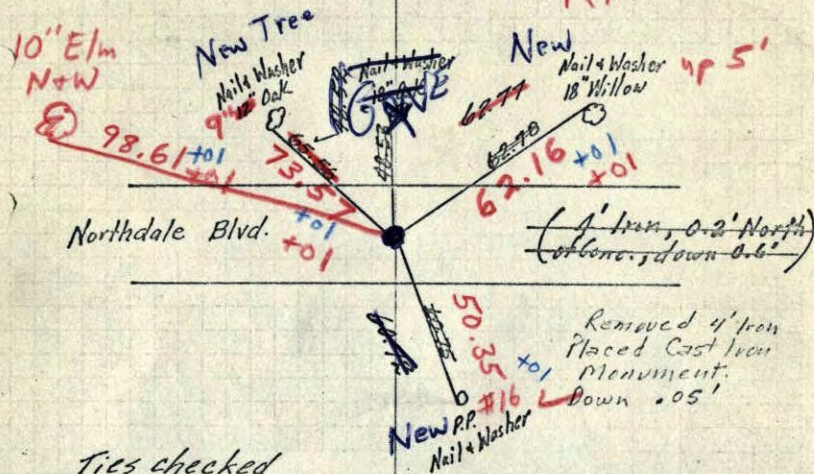
ROLAND W. ANDERSON
COUNTY SURVEYOR
ANOKA COUNTY, MINNESOTA

~~SW Corner Sec. 11 T31 R24~~

~~Con. Mon. down 2'~~

2'± South of E
Cast Iron Monument flush
PK: 2.00' N + E.

RAISED



Ties checked
June 5, 1964
M. O. Anderson
R. Carlson

Tie Check
July 13, 1966
H. Larson
D. Potter

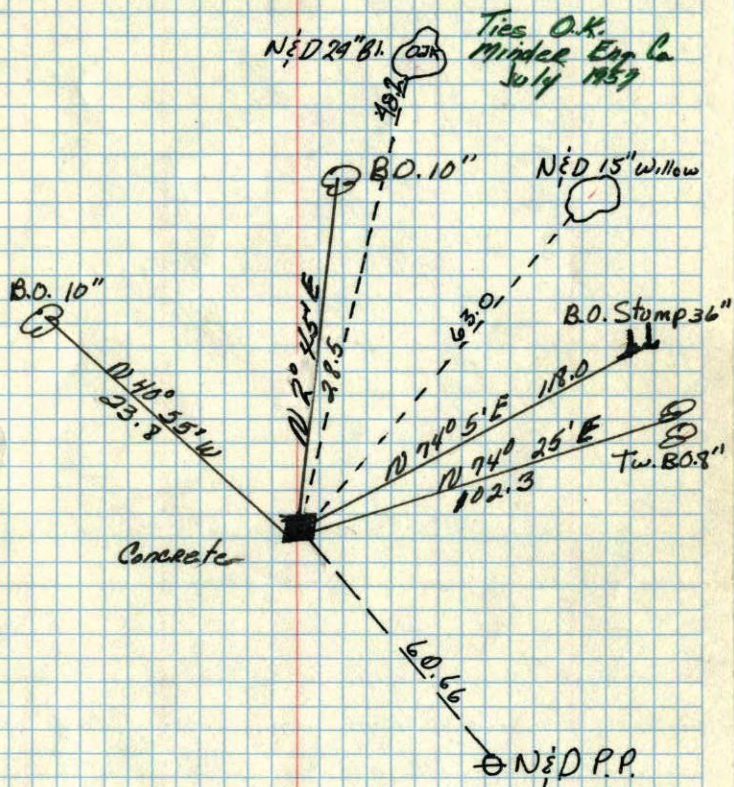
6/22/70
#10 - 85°
D. Powell
R. Brien
W. Westlander

TEMPERATURE CORRECTED
AND HORIZONTALLY
TAPED MEASUREMENTS

ROLAND W. ANDERSON
COUNTY SURVEYOR
ANOKA COUNTY, MINNESOTA

SW corner of Sec. 11 T. 31 R. 24

Concrete Monument



Retired

A.C. Hwy. Dept.

Crew 5/22/59

Assisting

Nov. 26, 1943
Cartwright