

CERTIFICATE OF LOCATION OF GOVERNMENT CORNER

County of Anoka

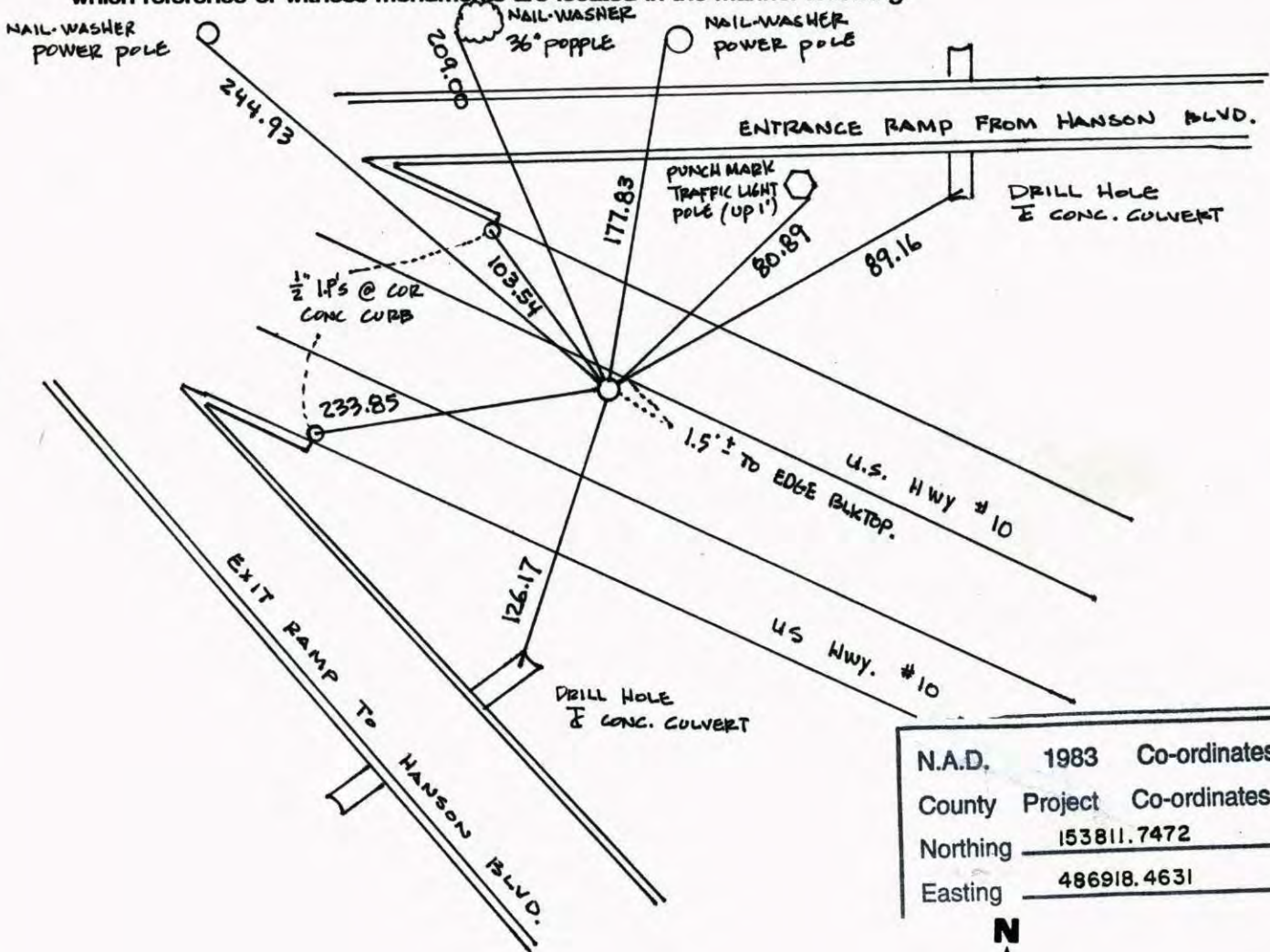
State of Minnesota

NORTH 1/4 Corner of Sec. 15 Township 31 Range 24

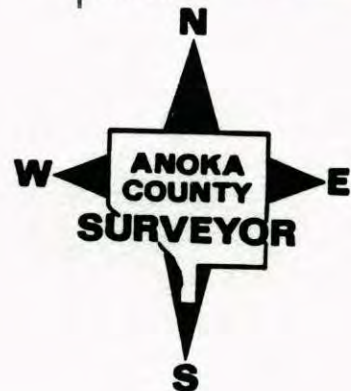
I hereby certify that on the 19TH day of JULY, 19 60, I found the described corner which was evidenced by CONCRETE MONUMENT

and I further certify that to perpetuate the location of said corner, I did, at the exact location thereof, place a permanent marker consisting of CAST IRON MONUMENT

which reference or witness monuments are located in the manner following:



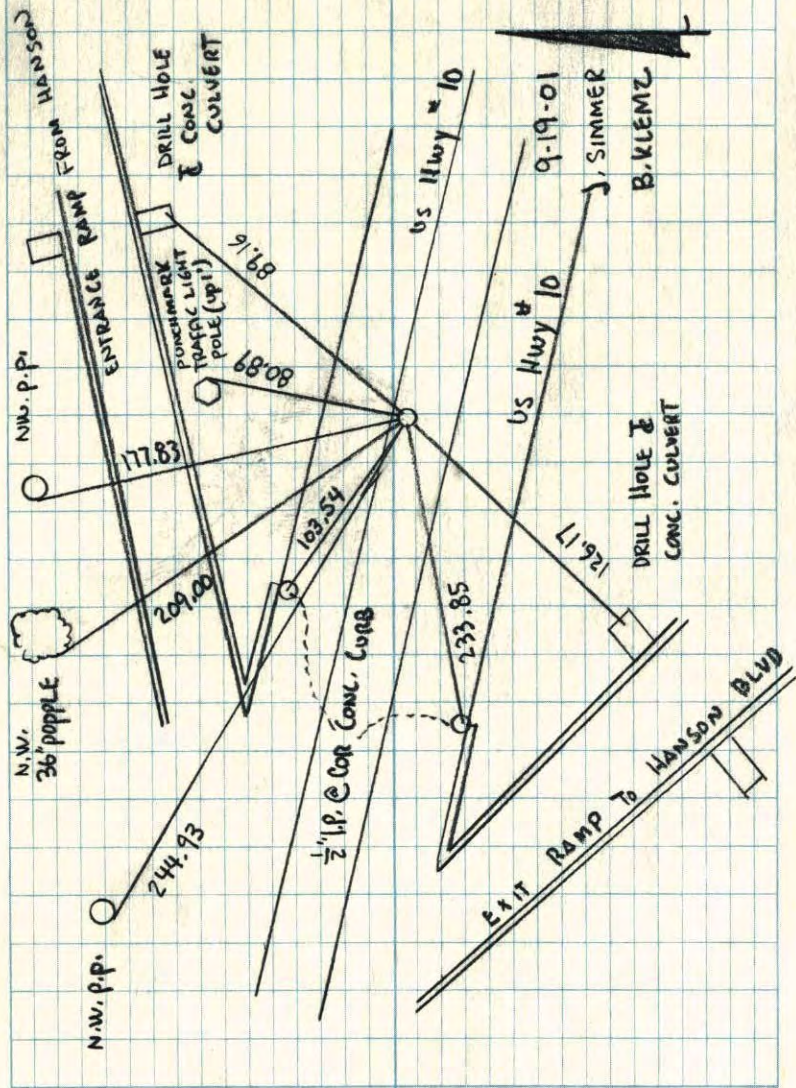
N.A.D.	1983	Co-ordinates
County	Project	Co-ordinates
Northing	153811.7472	
Easting	486918.4631	



Revised date	Revised date	Revised date
10-19-66		
7-24-70		
7-8-74		
6-21-77		
7-20-83		
6-13-86		
9-19-01		

NORTH 1/4 COR. SEC 15 T 31 R 24

GPS & RETIED CAST IRON MONUMENT



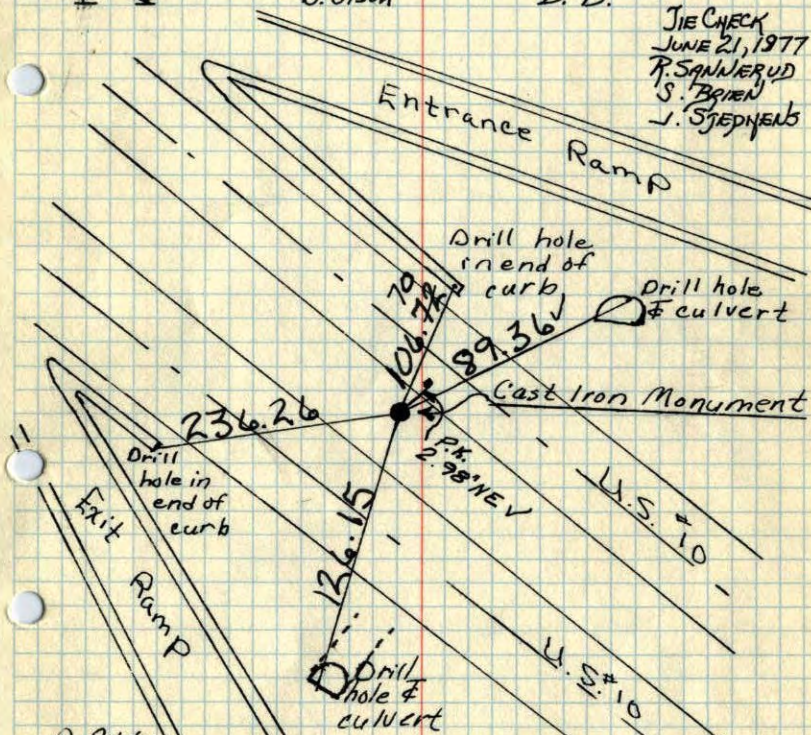
N 1/4 Cor. Sec 15, T 31, R 24

9/8/66 Replaced with C.I. mon.
 Oct. 19, 1966
 M.D. Anderson
 78° H.J. Larson
 D.H. Potter

Tie Check
 July 29, 1970
 D. Powell
 R. Brien
 B. Olson

TIE CHECK
 JULY 8, 1974
 R. FARMER
 N. D.
 D. D.

TIE CHECK
 JUNE 21, 1977
 P. SANNEBUD
 S. BRIEN
 J. STEPHENS



D. Potter
 D. Powell

TEMPERATURE CORRECTED
 AND HORIZONTALLY
 TAPED MEASUREMENTS

ROLAND W. ANDERSON
 COUNTY SURVEYOR
 ANOKA COUNTY, MINNESOTA

CERTIFICATE OF LOCATION OF GOVERNMENT CORNER

NORTH QUARTER Corner of Section 15, Township 31N, Range 24W, 4th P.M.

STATE OF MINNESOTA, County of Anoka

At the corner location shown on the sketch:

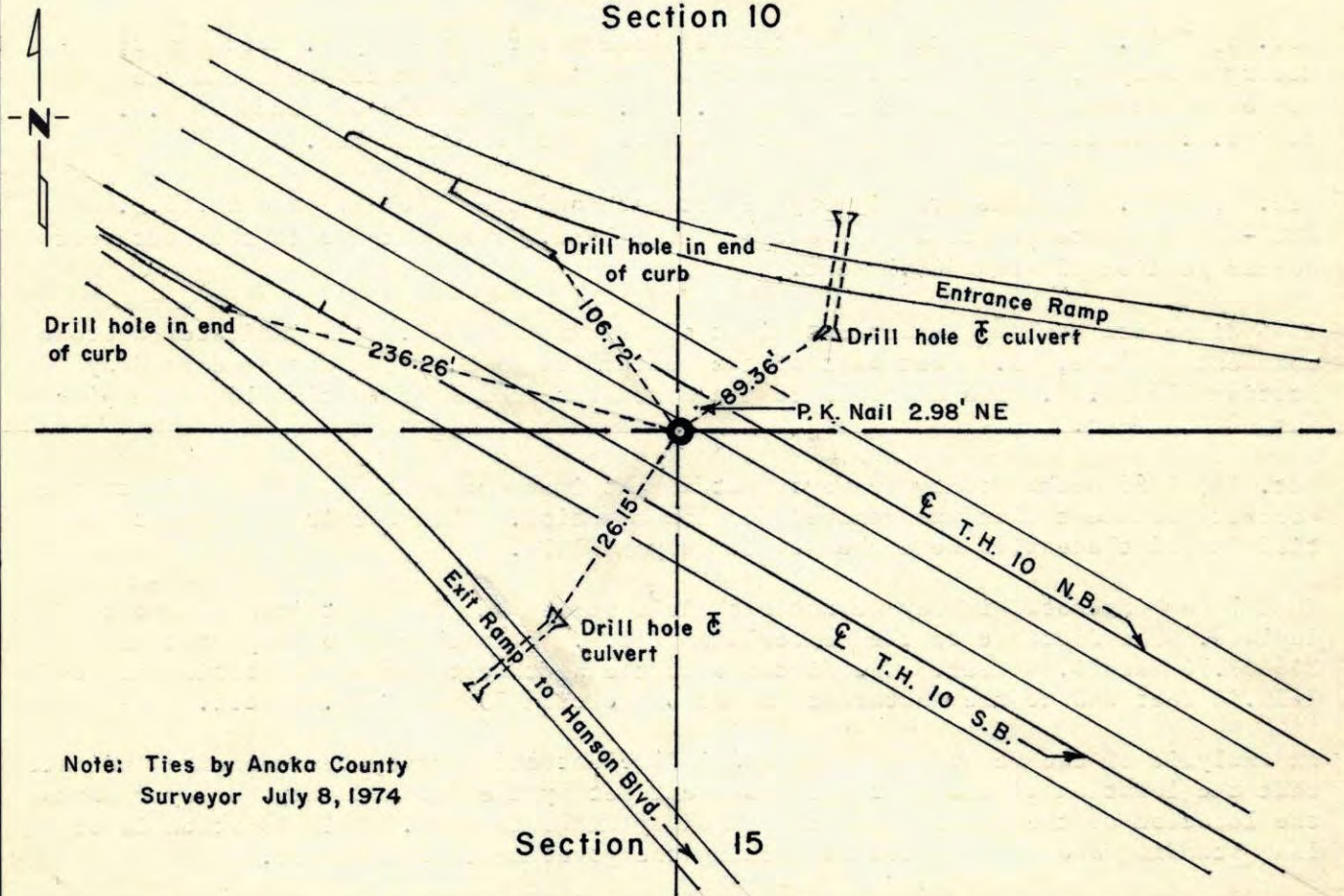
On 1974 found a Cast Iron Monument
DATE

left monument as found, lowered monument, removed monument (explain)

On _____ placed a _____
DATE

SKETCH OF REFERENCE TIES

Section 10



Note: Ties by Anoka County Surveyor July 8, 1974

Statement of evidence relative to this corner location is on back of page.

I hereby certify that this document and the data contained herein was prepared by me or under my direct supervision.

John E. Suenen 9-26-75
SIGNATURE DATE

Registration No. 10460

Land Surveyor, Professional Engineer

County Surveyor, County Engineer

OFFICE OF THE REGISTER OF DEEDS

County of _____

I hereby certify that this document was filed in the Reg. of Deeds office at _____ .M. on the _____ day of _____ A.D., 19 _____

Register of Deeds _____

By _____, Deputy

DOCUMENT NO. _____

X
N 1/4 Cor. Sec. 15, T31, R24

44

9/8/66

78°

Replaced with C.I. mon.
Oct. 19, 1966
M.D. Anderson
H.J. Larson
D.L. Potter

7/24/70

D. Powell
R. Brien
B. Olson

N

Entrance Ramp

Drill hole
in end of
curb

Drill hole
& culvert

Cast Iron Monument

Drill
hole in
end of
curb

Exit Ramp

Drill
hole &
culvert

D. Potter
D. Powell

TEMPERATURE CORRECTED
AND HORIZONTALLY
TAPED MEASUREMENTS

ROLAND W. ANDERSON
COUNTY SURVEYOR
ANOKA COUNTY, MINNESOTA

N 1/4 Cor. Sec. 15 - T31 - R24

9/8/66

78°

~~BRIDGE SPIKE SET~~

Replaced with C.I. Mon.
Oct. 19, 1966
M.D.A. - H.J.L. - D.L.P.

N

ENTRANCE RAMP

DRILL HOLE
IN END OF
CURB

DRILL HOLE
TOP CENTER
CULVERT

Cast Iron Monument

U.S. 10

DRILL
HOLE IN
END OF
CURB

236.22

106.00

100.00

89.35

126.15

101.00

126.15

101.00

100.00

89.35

106.00

236.22

100.00

100.00

89.35

106.00

236.22

100.00

100.00

89.35

106.00

236.22

100.00

100.00

89.35

106.00

236.22

D. POTTER
D. POWELL

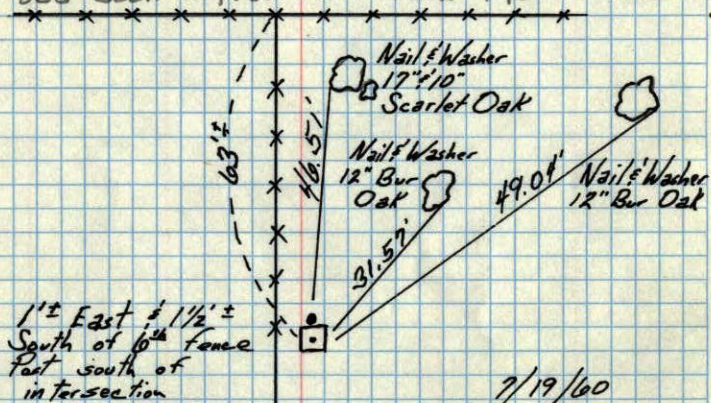
TEMPERATURE CORRECTED
AND HORIZONTALLY
TAPED MEASUREMENTS

ROLAND W. ANDERSON
COUNTY SURVEYOR
ANOKA COUNTY, MINNESOTA

N 1/4 Cor Sec 15 - T31 - R24

Conc. Mon. up .7'
Iron Pipe on North

This corner referenced West and South for Highway #10 Construction on Apr. 27, 1965 by Oliver-Anderson-Larson Sec Coon Rapids field Book Pgs 17 thru 20



7/19/60

D. Patter
R. Robinson

**TEMPERATURE CORRECTED
AND HORIZONTALLY
TAPED MEASUREMENTS**

**ROLAND W. ANDERSON
COUNTY SURVEYOR
ANOKA COUNTY, MINNESOTA**

48181.9

out

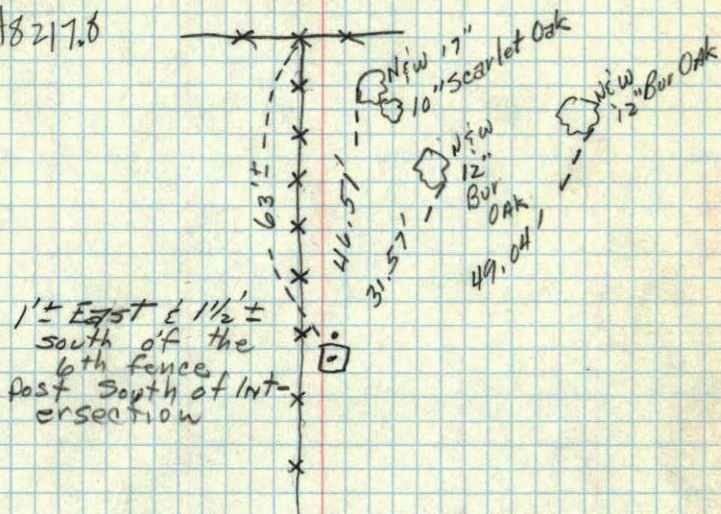
N 1/4 Sec 15, T31, R24

Conc. Mon. Up .7

Iron Pipe on North

7/19/60

48217.6

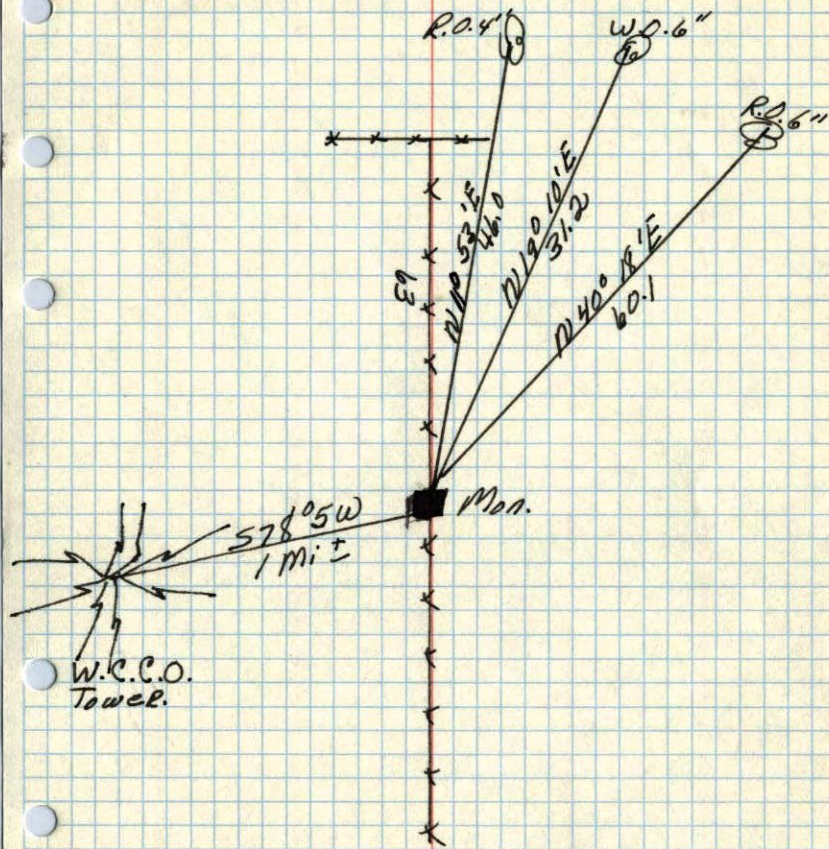


1'± East & 1 1/2'±
south of the
6th fence
post South of Int-
ersection

48181.9 / 60

N 1/4 corner of Sec. 16 T. 31. R. 24

Concrete Mon. Flash.



Nov. 10. 1944
C. G. Wright