

# CERTIFICATE OF LOCATION OF GOVERNMENT CORNER

County of Anoka

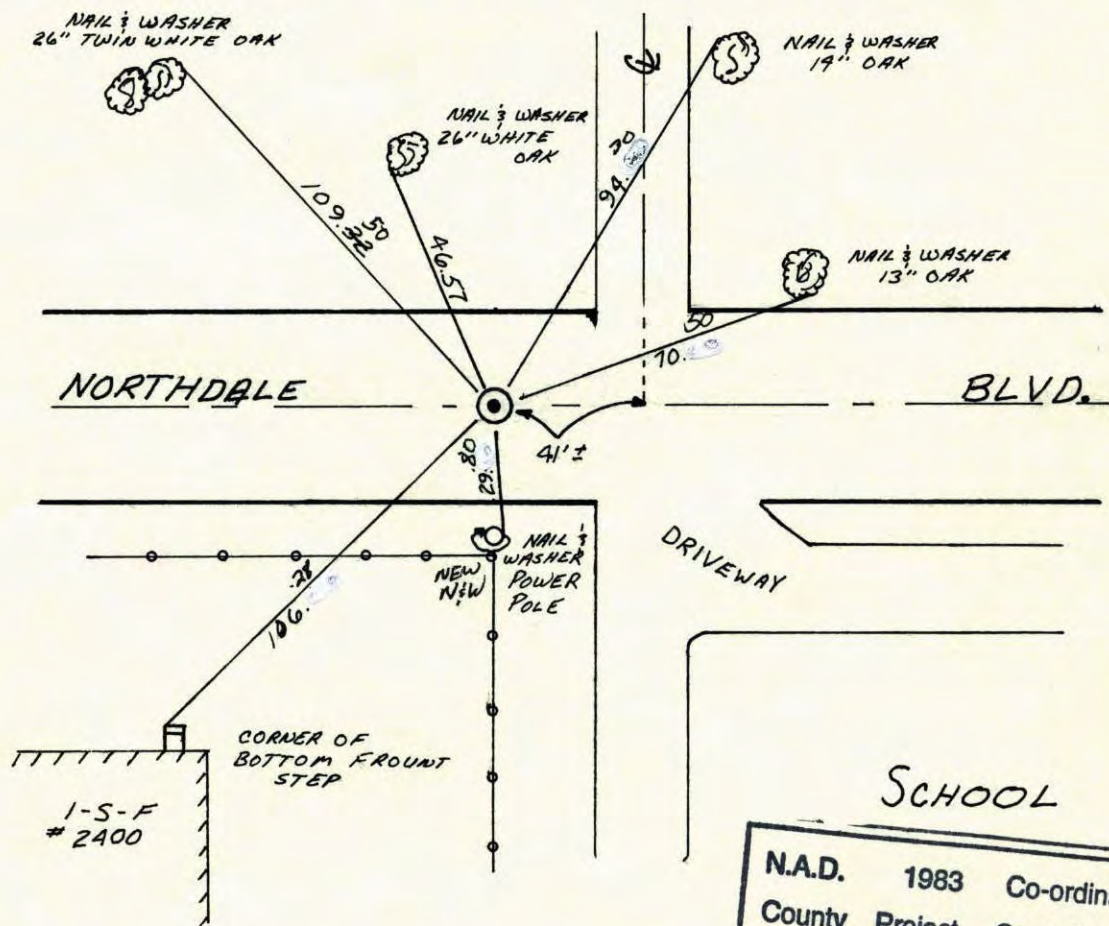
State of Minnesota

NORTHWEST Corner of Sec. 15 Township 31 Range 24

I hereby certify that on the 19 day of JULY, 1960, I found the described corner which was evidenced by CONCRETE

and I further certify that to perpetuate the location of said corner, I did, at the exact location thereof, place a permanent marker consisting of CAST IRON MONUMENT ON TOP OF BROKEN OFF CONCRETE MONUMENT

which reference or witness monuments are located in the manner following:



N.A.D.	1983	Co-ordinates
County	Project	Co-ordinates
Northing	153888.5586	
Easting	484280.1507	
State Plane Co-ordinates		

Revised date	By	CHECKED
7-24-70	D.P. R.B. B.O.	8-12-94
7-11-74	R.F. N.D. D.D.	
6-21-77	R.S. S.B. J.S.	
6-26-80	B.S. P.R. P.H.	
7-18-83	P.R. J.B. J.V.	
REDRAWN 1-10-84	R. KREUSER	
6-13-86	D. ROSS	

**Minnesota State Plane Coordinates**  
**South Zone**

Y \_\_\_\_\_ X \_\_\_\_\_

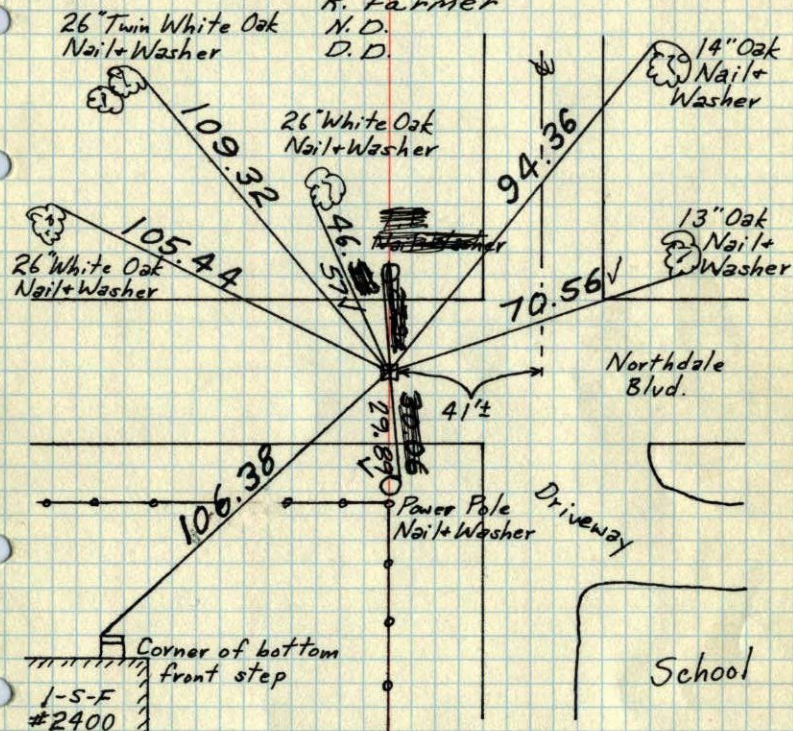
\_\_\_\_\_, \_\_\_\_\_  
 County Surveyor Date

Registered Land Surveyor No. \_\_\_\_\_

## NW Cor. Sec. 15-T31-R24

Concrete Monument down 1.35'. Iron Pipe over  
top center flush.

7/19/60  
Patter  
Robinson  
Set Cast Iron Mon  
Over Broken Off  
Conc. Mon (flush)  
July 11, 1974  
R. Farmer  
N.D.  
D.D.



TIE CHECK  
July 24, 1970  
D. Powell  
R. Brien  
B. Olson

TIE CHECK  
JUNE 21, 1977  
R. SANIERUD  
S. BRIEN  
J. STEPHENS

TIE CHECK  
6-26-80  
B. STEPHENS  
P. ROSS  
P. HORNBY

TEMPERATURE CORRECTED  
AND HORIZONTALLY  
TAPED MEASUREMENTS

ROLAND W. ANDERSON  
COUNTY SURVEYOR  
ANOKA COUNTY, MINNESOTA

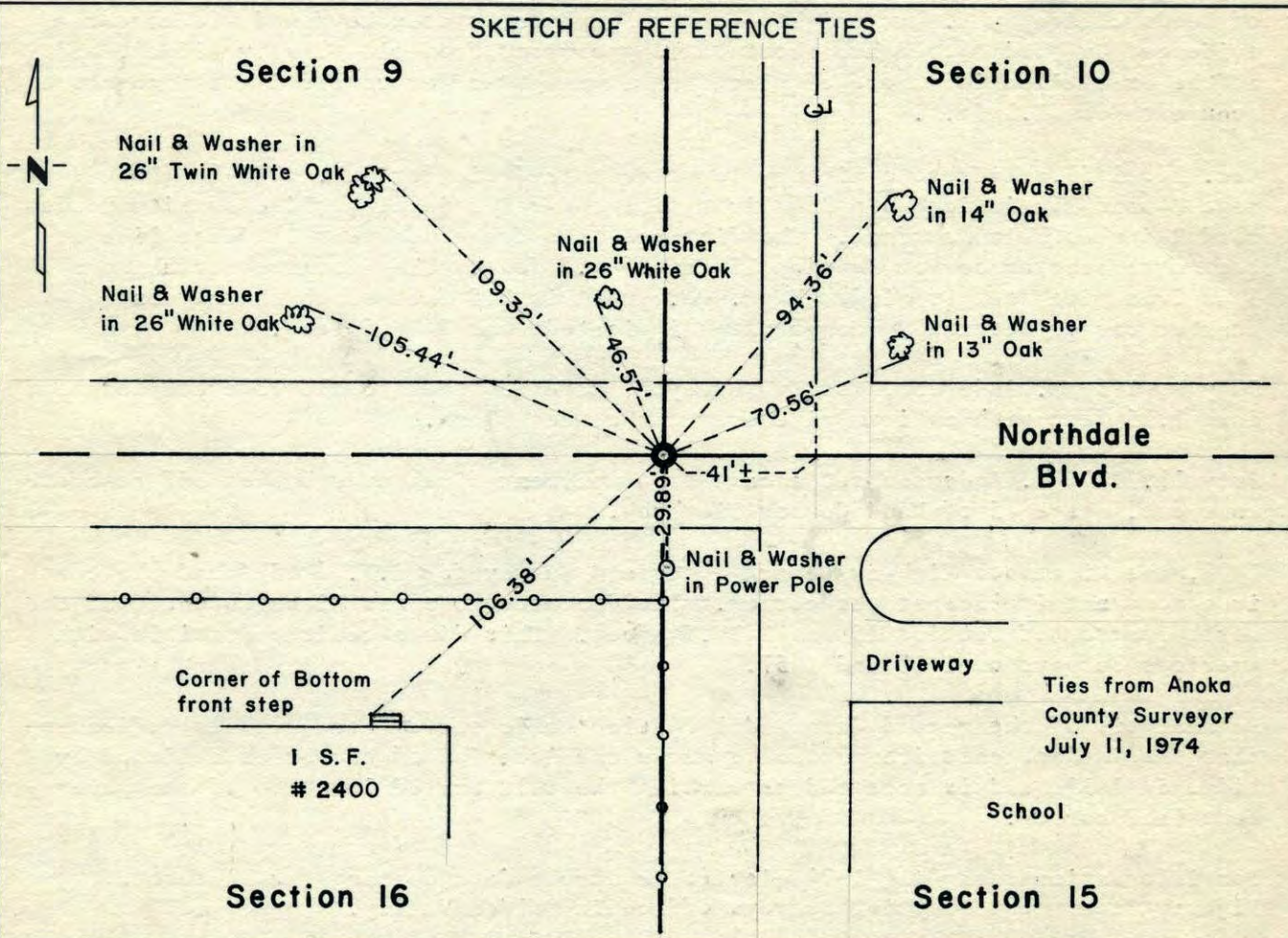
# CERTIFICATE OF LOCATION OF GOVERNMENT CORNER

<sup>NW</sup>  
~~Northeast~~ Corner of Section <sup>15</sup>/<sub>16</sub>, Township 31N, Range 24W, 4th P.M.

STATE OF MINNESOTA, County of Anoka

At the corner location shown on the sketch:

- On 1974 found a Cast Iron Monument  
DATE
- left monument as found,  lowered monument,  removed monument (explain)
- On \_\_\_\_\_ placed a \_\_\_\_\_  
DATE



**Northdale Blvd.**

Ties from Anoka County Surveyor  
 July 11, 1974

School

Statement of evidence relative to this corner location is on back of page.

I hereby certify that this document and the data contained herein was prepared by me or under my direct supervision

*John E. Sullivan* 9-26-75  
SIGNATURE DATE

Registration No. 10460

- Land Surveyor,  Professional Engineer
- County Surveyor,  County Engineer

OFFICE OF THE REGISTER OF DEEDS

County of \_\_\_\_\_

I hereby certify that this document was filed in the Reg. of Deeds office at \_\_\_\_\_ .M. on the \_\_\_\_\_ day of \_\_\_\_\_ A.D., 19 \_\_\_\_\_

Register of Deeds \_\_\_\_\_

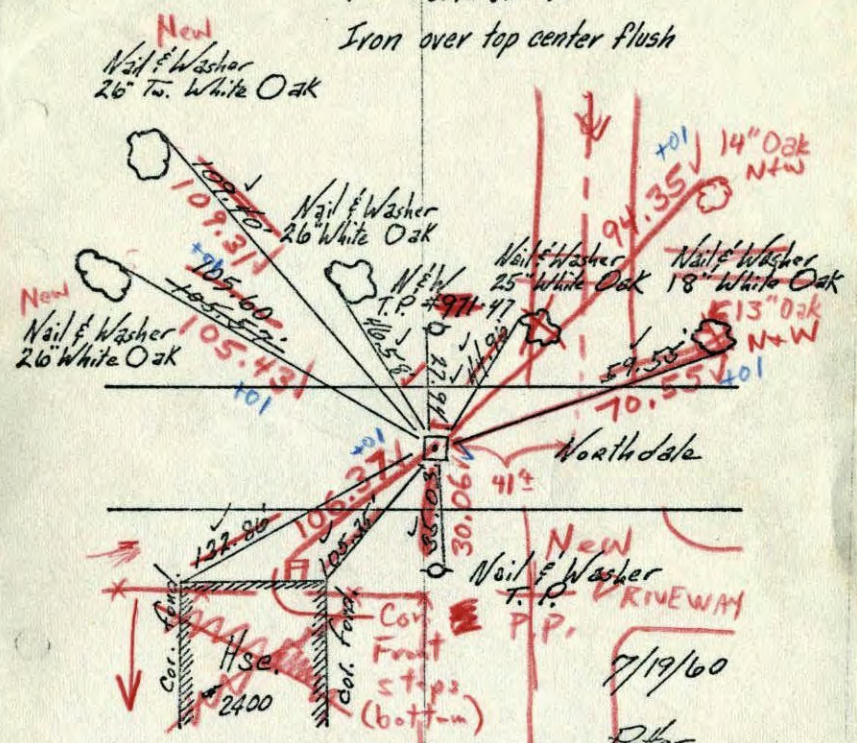
By \_\_\_\_\_, Deputy

DOCUMENT NO. \_\_\_\_\_

NW COR. Sec 15 - T31 - R24

Conc. Monument  
down 1.35'  
Iron on North side  
15' North of &

Iron over top center flush



Tie Check  
July 13, 1966  
H. Larson  
D. Potter

7/24/70  
#11-74  
D. Powell  
R. Brien, B. Olson

Retie 6/8/64  
M. D. Anderson  
R. Carlson

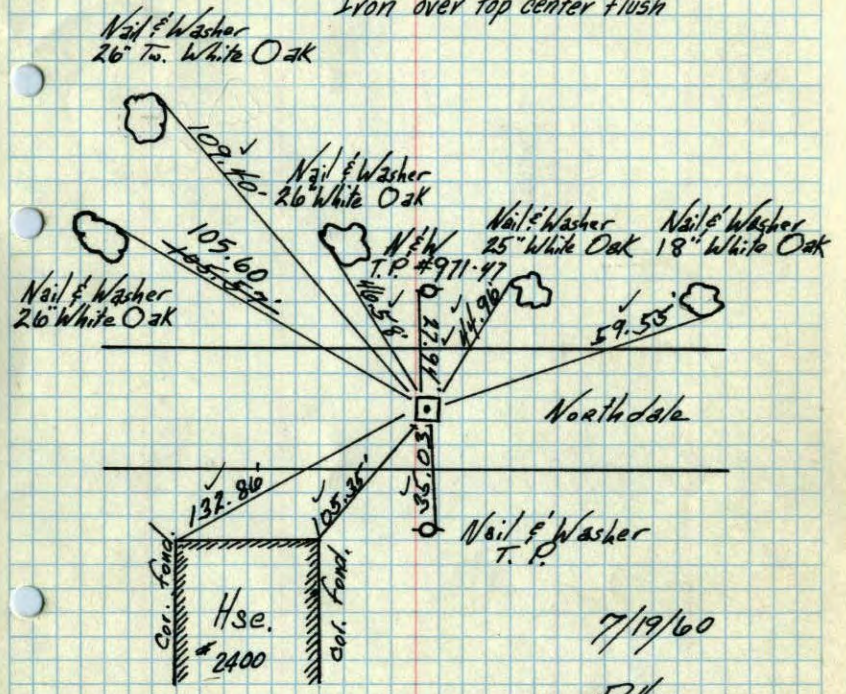
TEMPERATURE CORRECTED  
AND HORIZONTALLY  
TAPED MEASUREMENTS

ROLAND W. ANDERSON  
COUNTY SURVEYOR  
ANOKA COUNTY, MINNESOTA

NW COR. Sec 15 - T31 - R24

Conc. Monument  
down 1.35'  
Iron on North side  
15' North of &

Iron over top center flush



Tie Check  
July 13, 1966  
H. Larson  
D. Potter

7/19/60

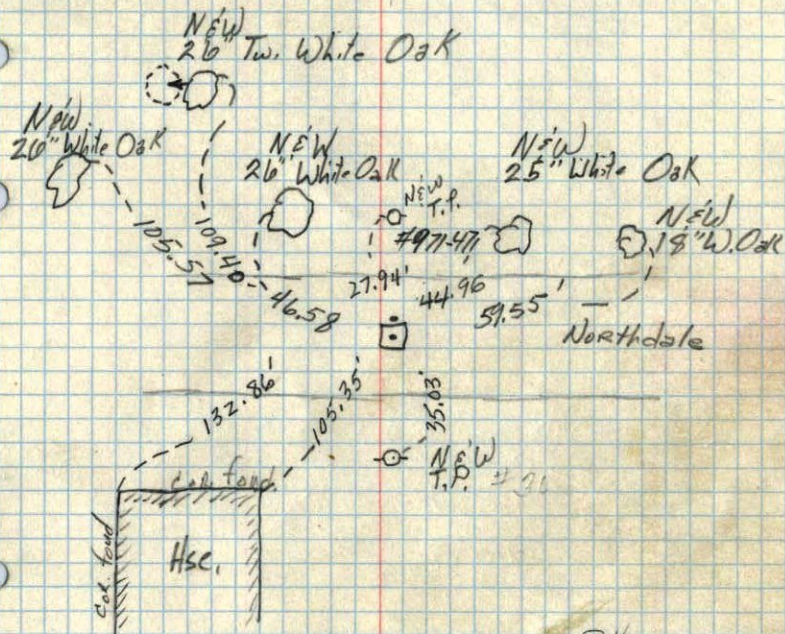
Potter  
Robinson

TEMPERATURE CORRECTED  
AND HORIZONTALLY  
TAPED MEASUREMENTS

Retie 6/8/64  
M. D. Anderson  
R. Carlson

ROLAND W. ANDERSON  
COUNTY SURVEYOR  
ANOKA COUNTY, MINNESOTA

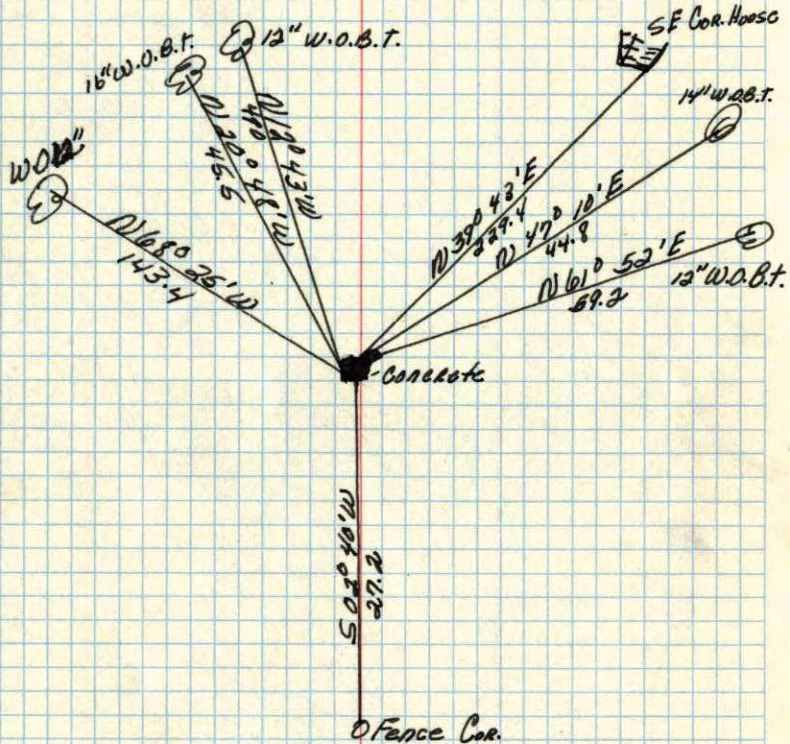
NW. Cor. Sec. 15, T31, R24  
 in  
 48157.4  
 7/19/60



Peter  
 Robinson

7/19/60

NW corner of Sec. 15 + 31 R24  
 Concrete Monument down 1.7 ft.



May 20, 1944  
 C. A. Wright