

CERTIFICATE OF LOCATION OF GOVERNMENT CORNER

County of Anoka

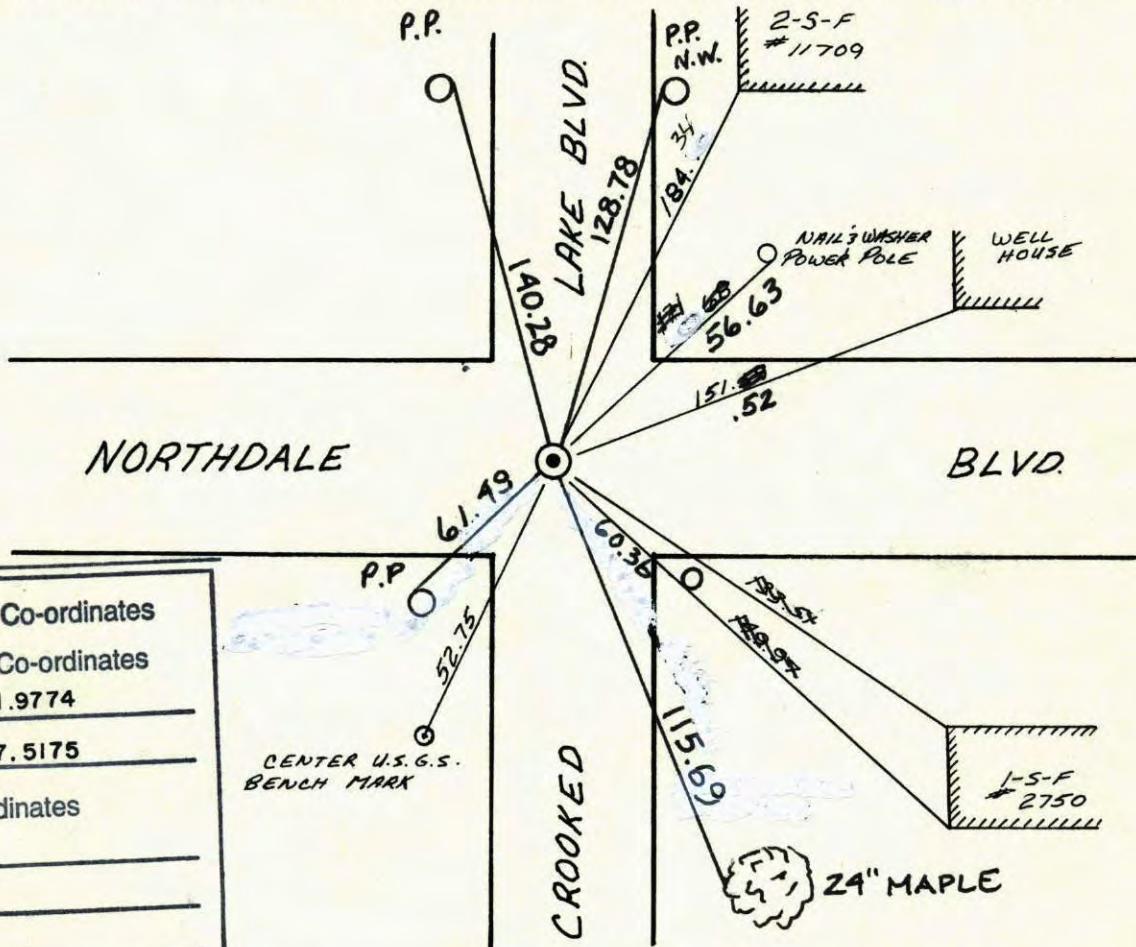
State of Minnesota

SOUTH ONE QUARTER Corner of Sec. 9 Township 31 Range 24

I hereby certify that on the 15 day of JULY, 1960, I found the described corner which was evidenced by CONCRETE

and I further certify that to perpetuate the location of said corner, I did, at the exact location thereof, place a permanent marker consisting of CAST IRON MONUMENT

which reference or witness monuments are located in the manner following:



N.A.D.	1983	Co-ordinates
County	Project	Co-ordinates
Northing	<u>153891.9774</u>	
Easting	<u>481647.5175</u>	
State Plane Co-ordinates		
Y	_____	
X	_____	
Date	_____	

Revised date
<u>7-13-66</u>
<u>7-24-70</u>
<u>7-2-74</u>
<u>6-21-77</u>
<u>7-2-80</u>
<u>7-18-83</u>
<u>REDRAWN</u>
<u>1-10-84</u>
<u>4-13-84</u>

By	CHECKED
<u>H.L. D.P.</u>	<u>8-12-94</u>
<u>D.P. R.B. B.O.</u>	<u>RAISED</u>
<u>R.F. N.D. D.D.</u>	<u>8-29-95</u>
<u>R.S. S.B. J.S.</u>	
<u>B.S. P.R. P.H.</u>	
<u>P.R. J.B. J.V.</u>	
<u>R. KREUSER</u>	
<u>D. ROSS</u>	

Minnesota State Plane Coordinates
South Zone

Y _____ X _____

County Surveyor

Registered Land Surveyor No.

Date

5 1/4 Cor. Sec. 9 T31 R 24

Placed Cast Iron on top of Conc. Mon.

Found nothing. Reset Cast Iron Monument flush from ties. PK Nails 2.00' North + East.

July 24, 1970

D. Powell
R. Brien
B. Olson

Raised 6-21-77 set P.K.'s N+E.

TIE CHECK

JUNE 21, 1977

R. SANNEPUD

S. ZAHEN

J. STEPHENS

REPLACED BROKEN CI.

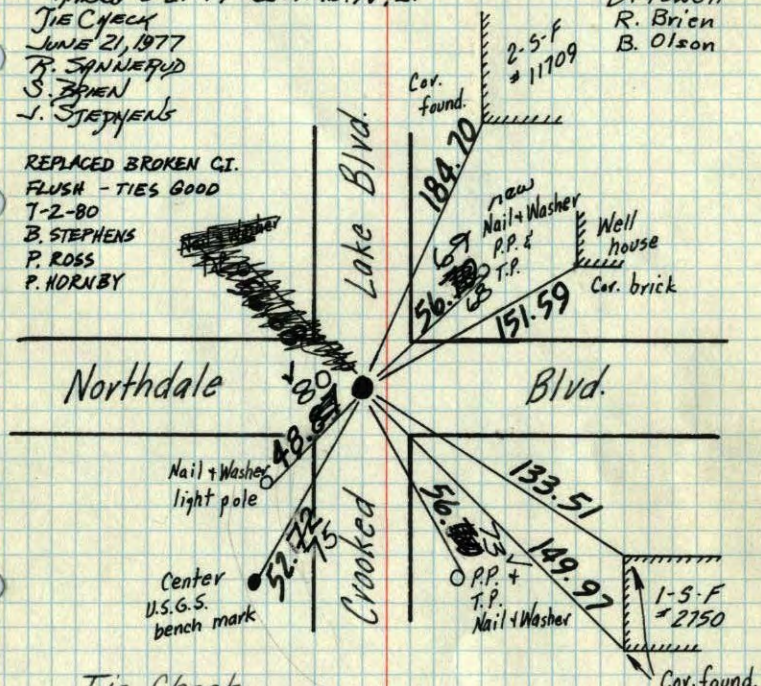
FLUSH - TIES GOOD

7-2-80

B. STEPHENS

P. ROSS

P. HORNBY



Tie Check
July 13, 1966
H. Larson
D. Potter

Raised Mon.
Tie Check
7/2/74
R. Farmer
H.D.
D.D.

Retie 6/4/64 7/15/60

M. D. Anderson D. Potter
R. Carlson R. Robinson

TEMPERATURE CORRECTED
AND HORIZONTALLY
TAPED MEASUREMENTS

ROLAND W. ANDERSON
COUNTY SURVEYOR
ANOKA COUNTY, MINNESOTA

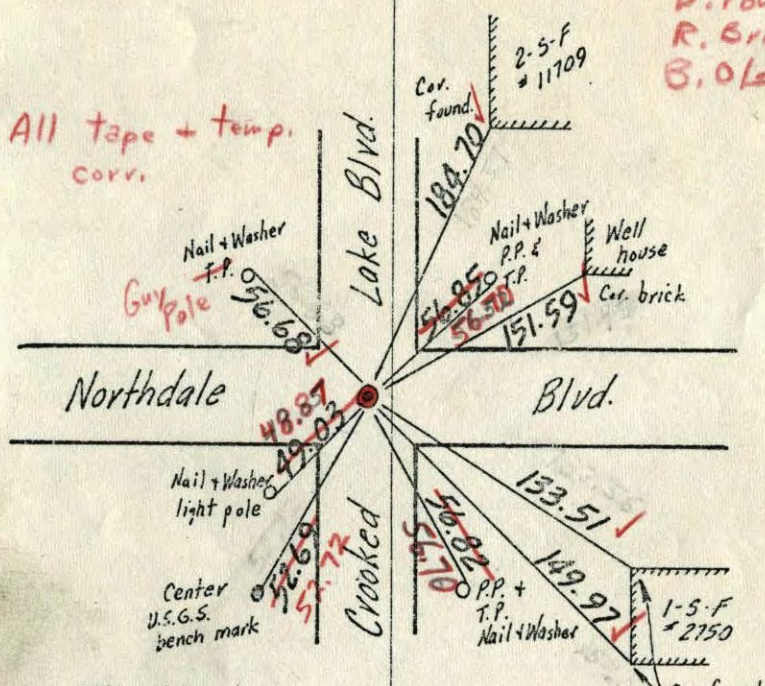
5 1/4 Cor. Sec. 9 T31 R 24

Placed Cast Iron on top of Conc. Mon.

Found nothing. Reset C.I. Mon. Flush from ties. PK's 2.00' N+E, 7/24/70

D. Powell
R. Brien
B. Olson

All tape + temp. corr.



Tie Check
July 13, 1966
H. Larson
D. Potter

Retie 6/4/64 7/15/60

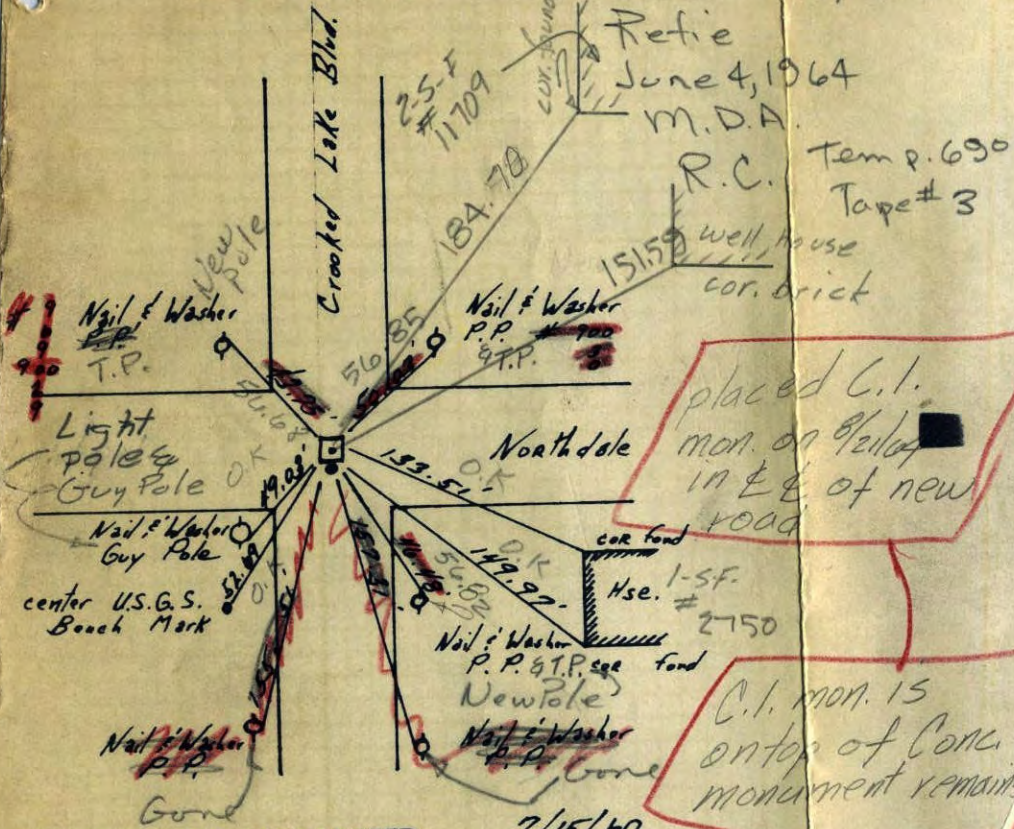
M. D. Anderson D. Potter
R. Carlson R. Robinson

TEMPERATURE CORRECTED
AND HORIZONTALLY
TAPED MEASUREMENTS

ROLAND W. ANDERSON
COUNTY SURVEYOR
ANOKA COUNTY, MINNESOTA

S/4 Cor. Sec 9 - T31 - R24

~~Conc. Mon. down 1.0'
R.R. spike to South flush with Mon.
Iron on center on surface & East of T~~



C.I. mon. is on top of Conc. monument remains

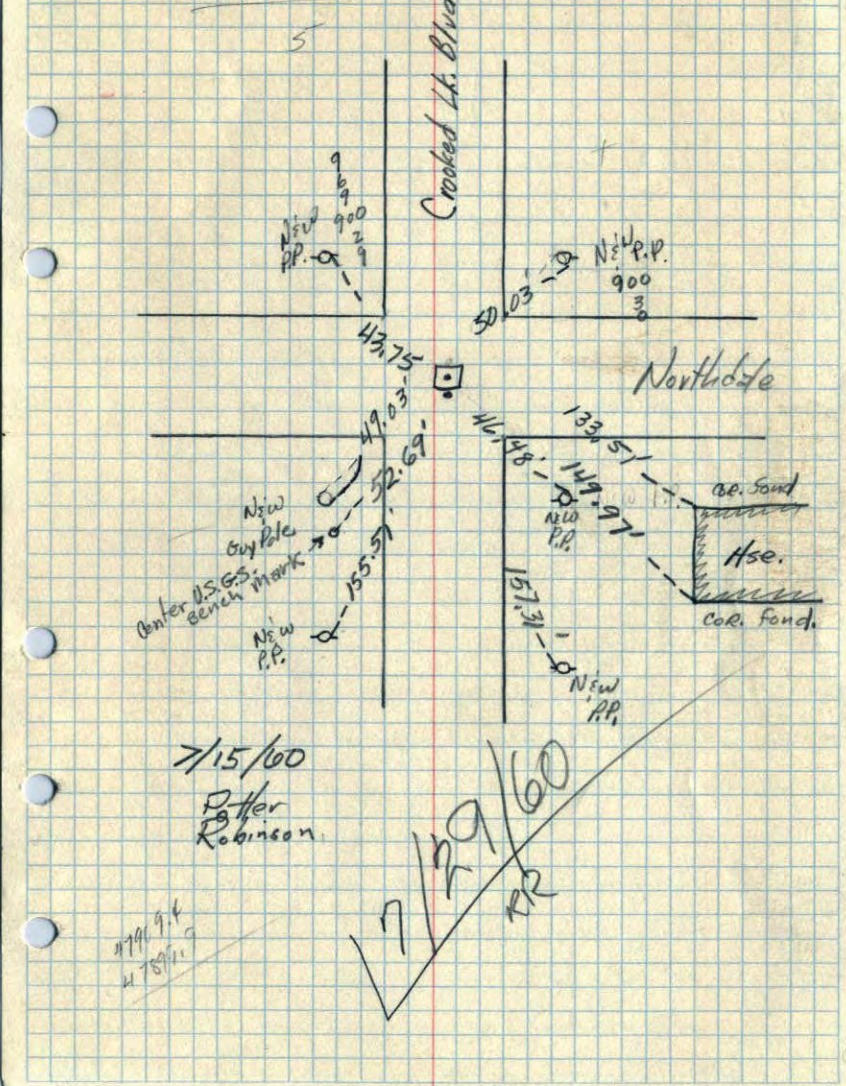
TEMPERATURE CORRECTED
AND HORIZONTALLY
TAPED MEASUREMENTS

7/15/60
Dennis Potter
Ralph Robinson

ROLAND W. ANDERSON
COUNTY SURVEYOR
ANOKA COUNTY, MINNESOTA

47899.9
47909.4

5/4 Cor. Section 9, T31, R24
Conc. Mon. down 1.0'
R.R. spike to South
flush with mon. iron
on center on surfaces



7/15/60
Dennis Potter
Ralph Robinson

7/19/60
RR

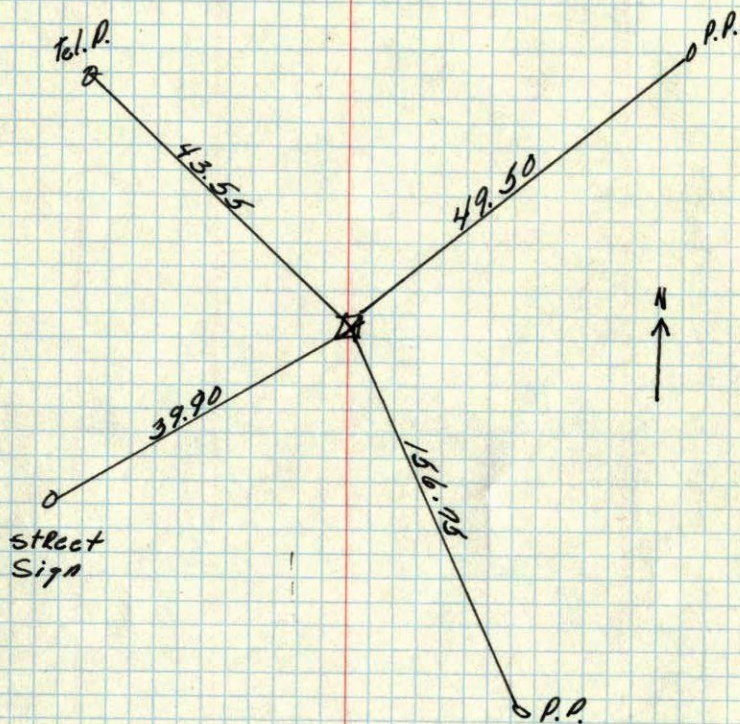
47899.9
47909.4

5 1/4

9

82
36

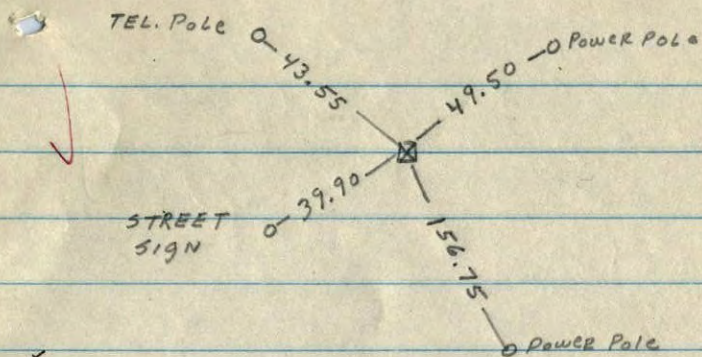
~~N 1/4~~ Cor. Sec. 16 T31 R24
Conc. Mon. 1' Below Surface



10-7-58
Don Coulter for
HARRY S. JOHNSON ASSOC

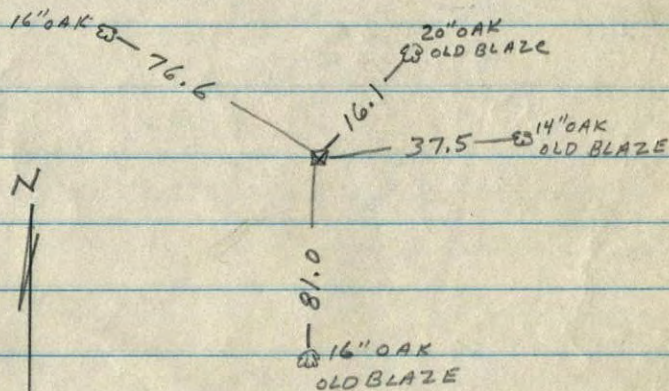
5 1/4 9

N 1/4 COR 16-31-24
Found CONC. MON. 1 foot Below Surface



5 1/4 COR 16-31-24

Found CONC. MON. FLUSH WITH SURFACE



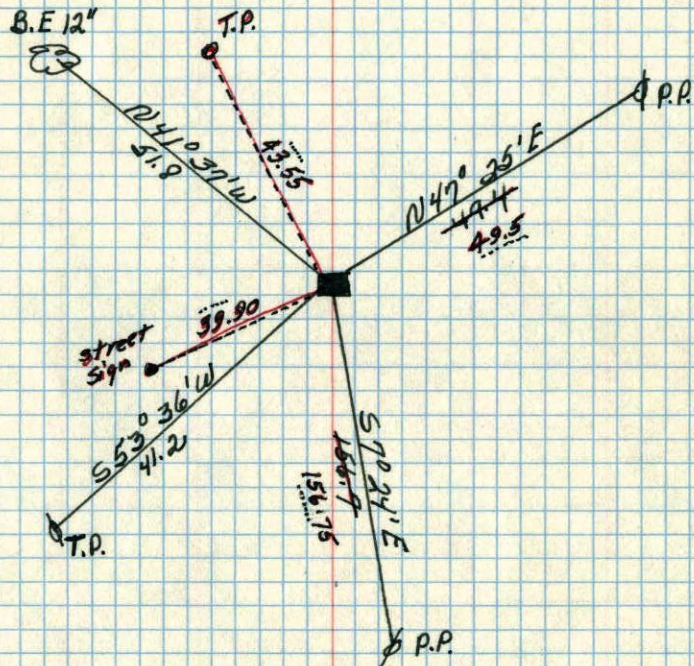
Ties by DON COULTER for HARRY S. JOHNSON ASSOC

10-7-58

S 1/4 corner of Section 9 T. 31, R. 24

Concrete Mon. down 1.0

New Ties by
Harry S. Johnson
10/7/58



May 20, 1944
?? Cartwright
No name sheet