

# CERTIFICATE OF LOCATION OF GOVERNMENT CORNER

County of Anoka

State of Minnesota

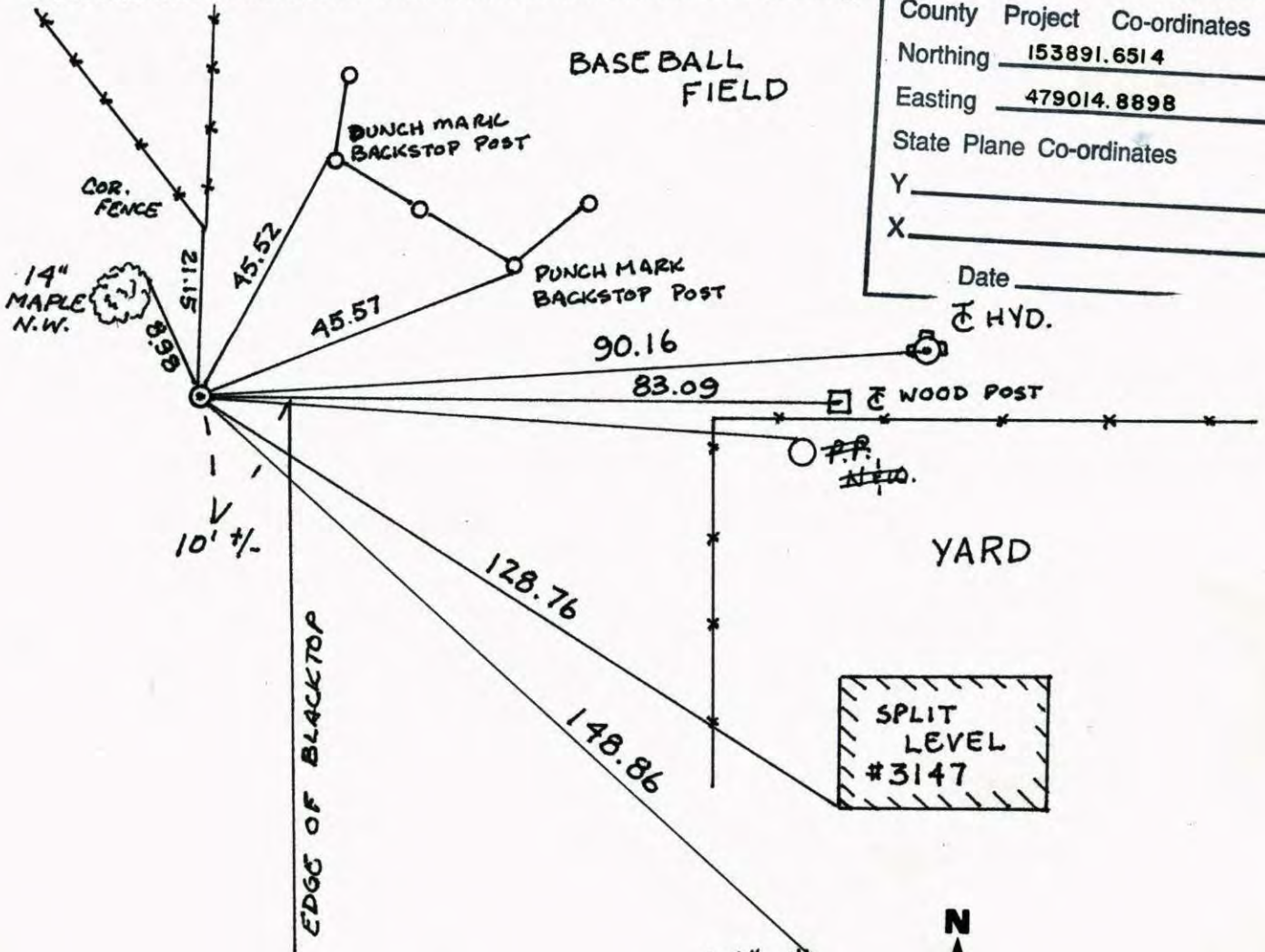
NORTHWEST Corner of Sec. 16 Township 31 Range 24

I hereby certify that on the 25 day of FEB., 1960, I found the described corner which was evidenced by CONC.

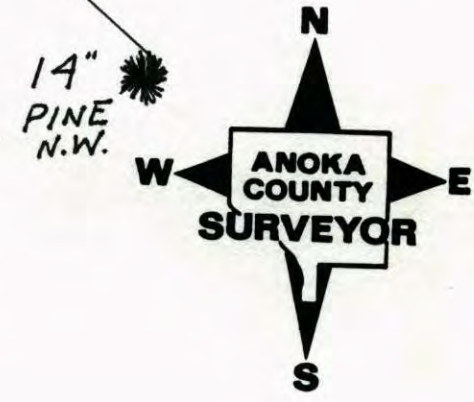
and I further certify that to perpetuate the location of said corner, I did, at the exact location thereof, place a permanent marker consisting of CAST IRON MON.

which reference or witness monuments are located in the manner following:

N.A.D.	1983	Co-ordinates
County	Project	Co-ordinates
Northing		<u>153891.6514</u>
Easting		<u>479014.8898</u>
State Plane Co-ordinates		
Y		_____
X		_____
Date _____		

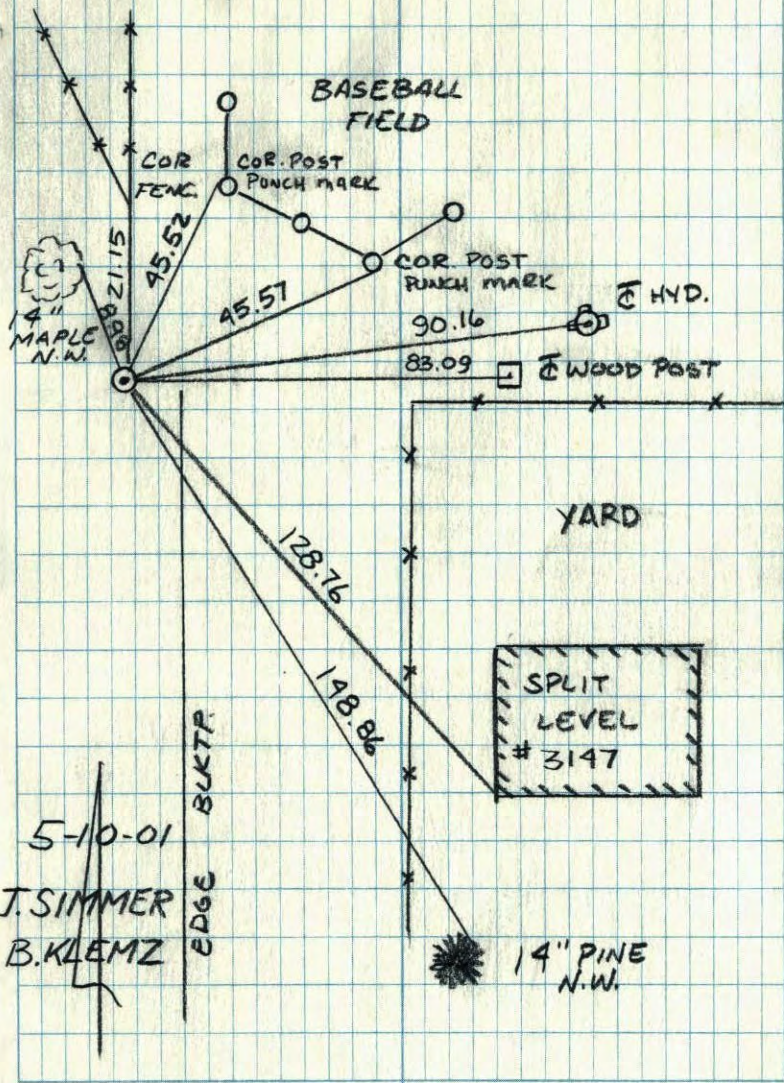


Revised date	Revised date	Revised date
<u>8-16-94</u>		
<u>5-10-01</u>		



NORTHWEST COR. SEC. 16 T-31 R-24

RETIED AND GPS C.I.M.

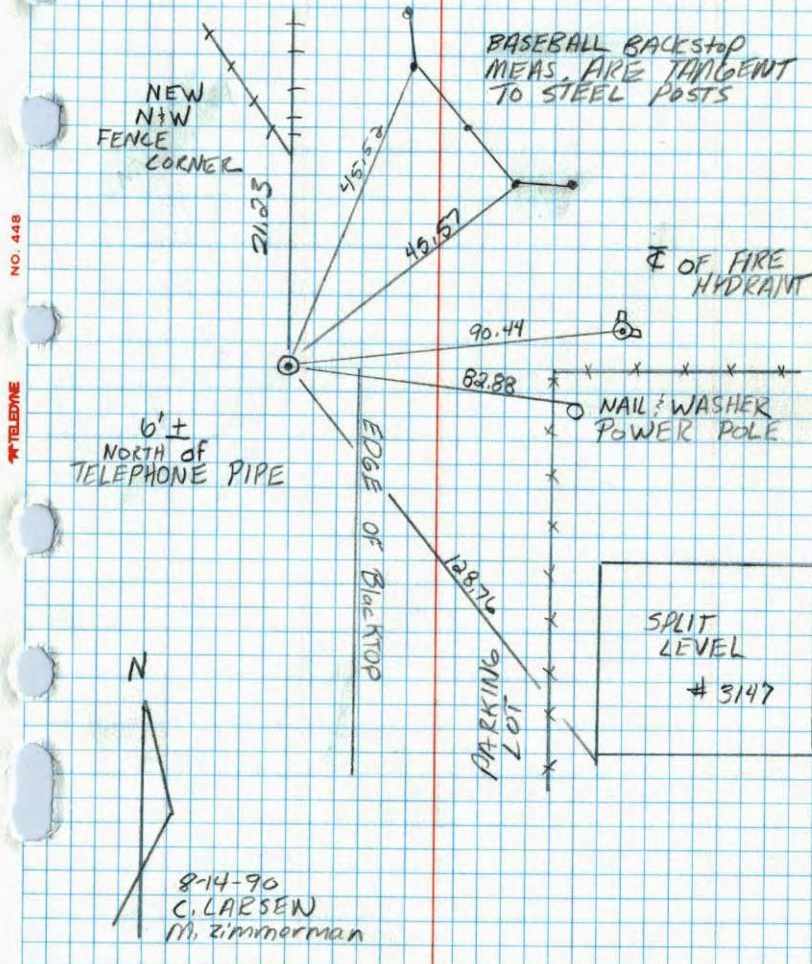


NORTHWEST

Sec. 16

T31 R24

RETIED CAST IRON MONUMENT

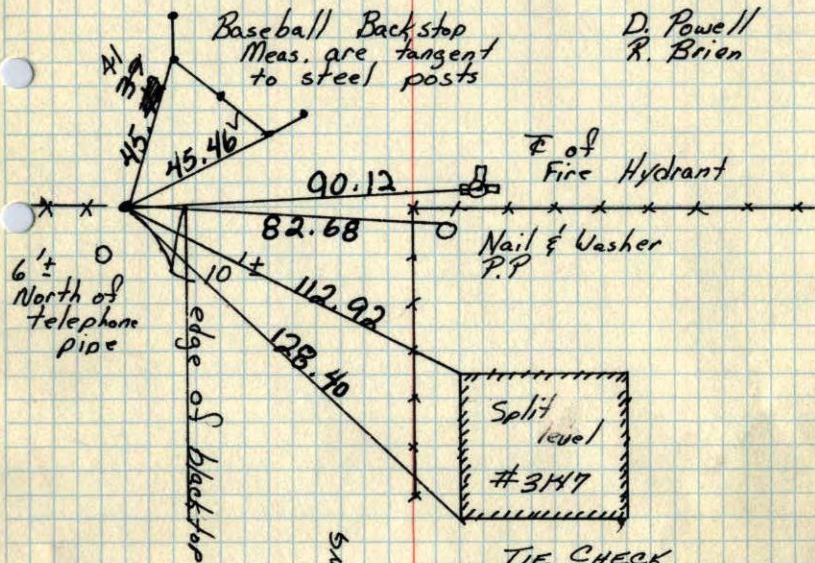


NW Cor. Sec. 16 - T31 - R24

Conc. Mon. down 0.5'±  
 Did not find conc. mon.  
 Set cast iron monument down 0.2'±

Retie 7/27/70

D. Powell  
 R. Brien



PARKING LOT

TIE CHECK  
 JULY 8, 1974  
 R. FARMER

TIE CHECK	TIE CHECK
JUNE 21, 1977	6-26-80
R. SPANNERUD	B. STEPHENS
S. BRIEN	P. ROSS
J. STEPHENS	P. HORNBY

ROLAND W. ANDERSON  
 COUNTY SURVEYOR  
 ANOKA COUNTY, MINNESOTA

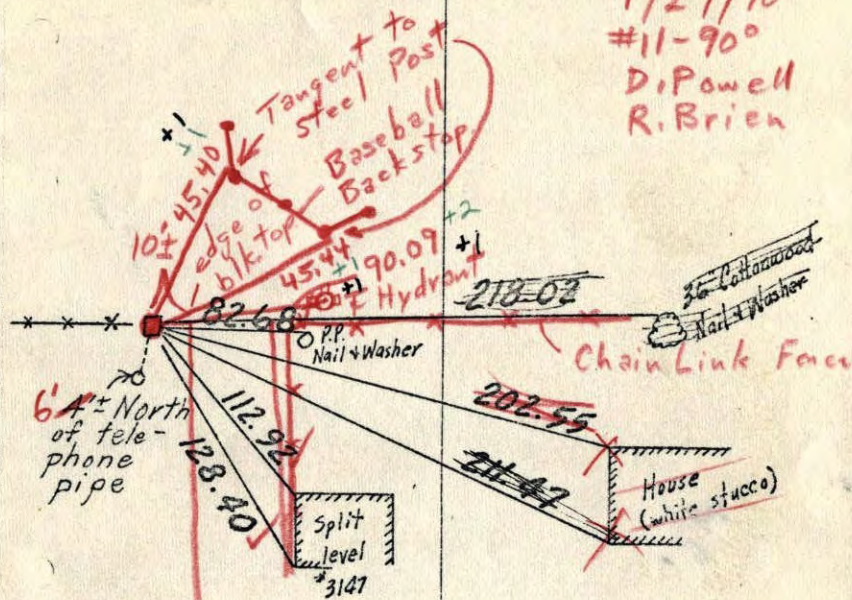
TEMPERATURE CORRECTED  
 AND HORIZONTALLY  
 TAPED MEASUREMENTS

NW Cor. Sec. 16 T 31 R 24

Conc. Mon. down 1/2'

Did not find conc. Set C, I, Mon.  
 down 0.2'± from ties,

7/27/70  
 #11-90°  
 D. Powell  
 R. Brien



Tie Check  
 July 14, 1966  
 H. Larson  
 D. Potter  
 G. Reimer

TEMPERATURE CORRECTED  
 AND HORIZONTALLY  
 TAPED MEASUREMENTS

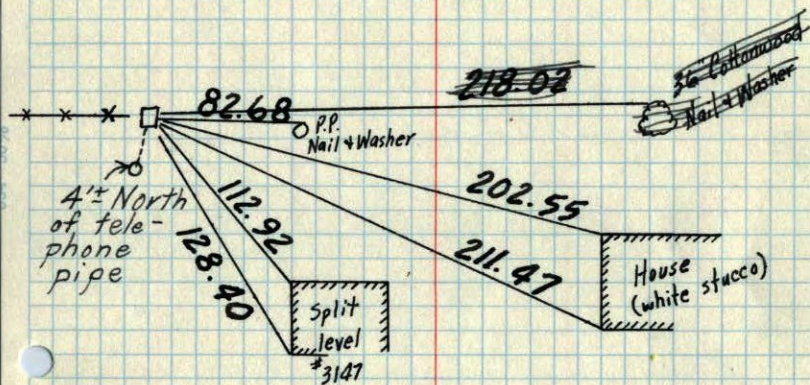
Retie 6/4/64  
 M. D. Anderson  
 R. Carlson

ROLAND W. ANDERSON  
 COUNTY SURVEYOR  
 ANOKA COUNTY, MINNESOTA

99.

47  
NW Cor. Sec. 16 T 31 R 24

Conc. Mon. down 1/2'



Tie Check  
July 14, 1966  
H. Larson  
D. Potter  
G. Reimer

TEMPERATURE CORRECTED  
AND HORIZONTALLY  
TAPED MEASUREMENTS

Retie 6/4/64

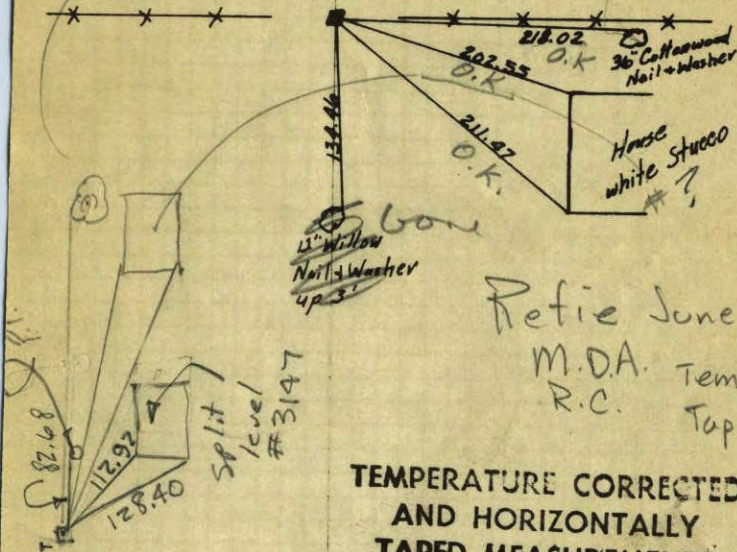
M. D. Anderson  
R. Carlson

ROLAND W. ANDERSON  
COUNTY SURVEYOR  
ANOKA COUNTY, MINNESOTA

47  
NW Corner. Sec. 16 T 31 R 24

Con. Mon. Flush

Down 1/2'



Retie June 4, 1964

M. D. A. Temp. 69°

R. C. Tape #3

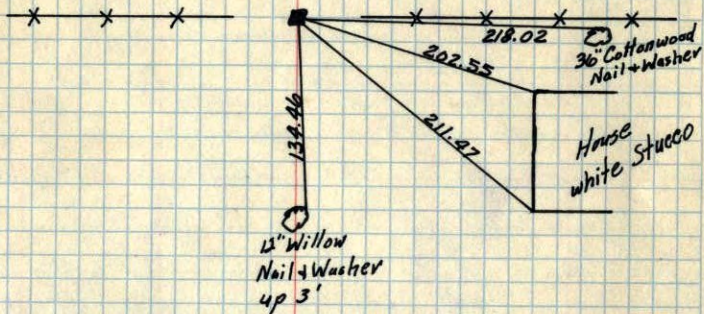
TEMPERATURE CORRECTED  
AND HORIZONTALLY  
TAPED MEASUREMENTS

Feb. 25, 1960

ROLAND W. ANDERSON  
COUNTY SURVEYOR  
ANOKA COUNTY, MINNESOTA

NW Corner. Sec. 16 T31 R24

Con. Mon. Flush



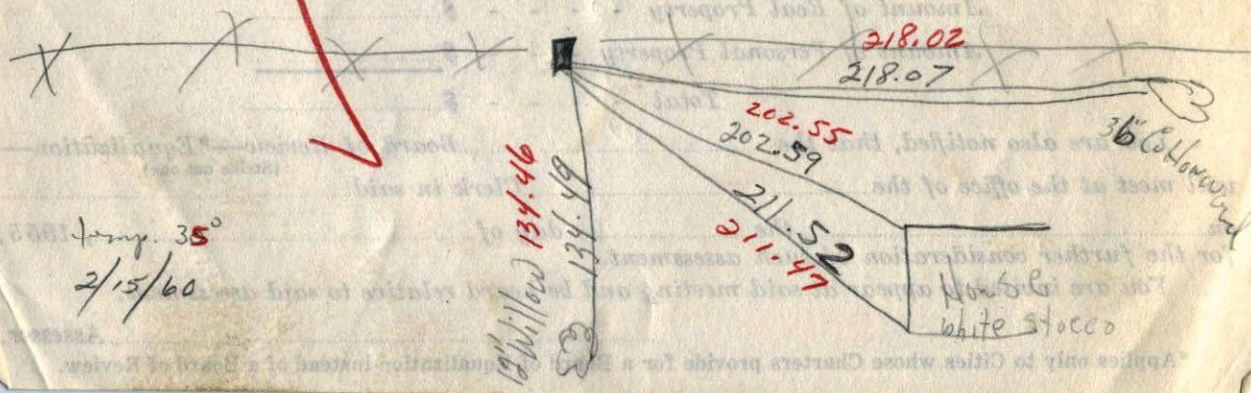
TEMPERATURE CORRECTED  
AND HORIZONTALLY  
TAPED MEASUREMENTS

Feb. 25, 1960

ROLAND W. ANDERSON  
COUNTY SURVEYOR  
ANOKA COUNTY, MINNESOTA



NW Cor. Sec. 16 T31 R24  
Con. Mon. Flush



Temp. 35°  
2/15/60

12" Willow 134.46

134.49

202.55  
202.59  
211.52  
211.47

218.02  
218.07

House  
white stucco

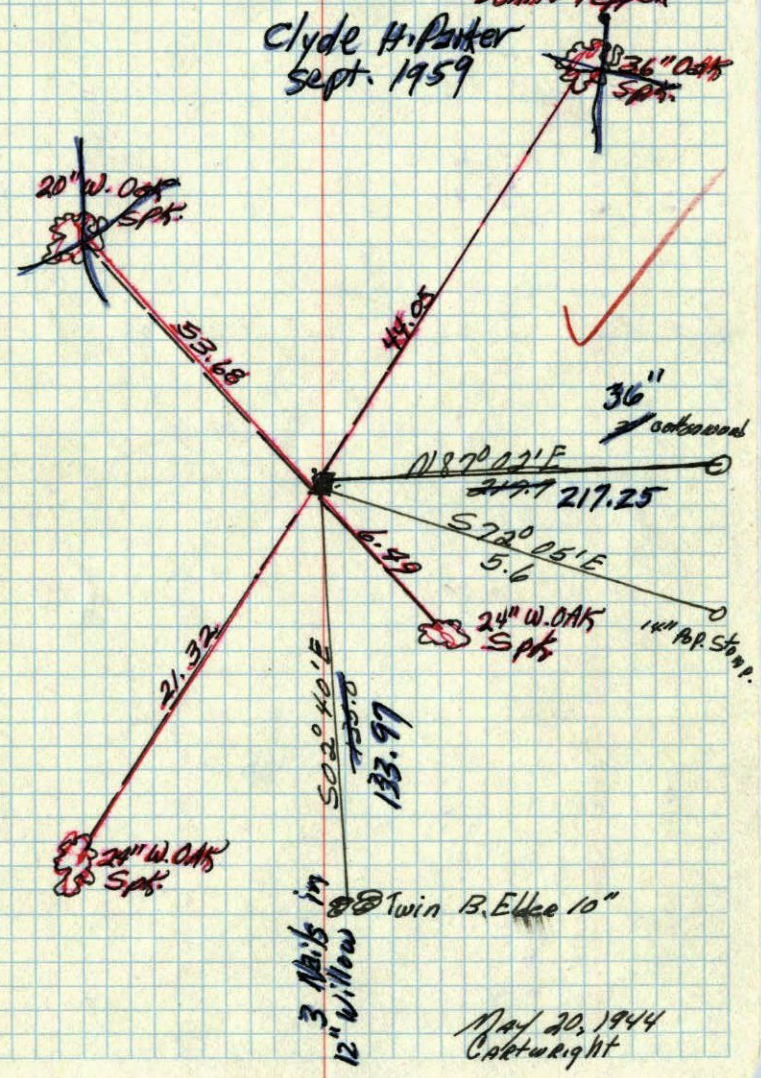
36" Cottonwood

NW corner of Sec. 16 T. 31, R. 24

Concrete Monument flush with ground

Retired By  
Ciswell Exp. Co.  
Donor Pepper

Clyde H. Parker  
Sept. 1959



(?)  
W.

N.E. Corner Sec. 17, Township 31, Range 24  
NW 16

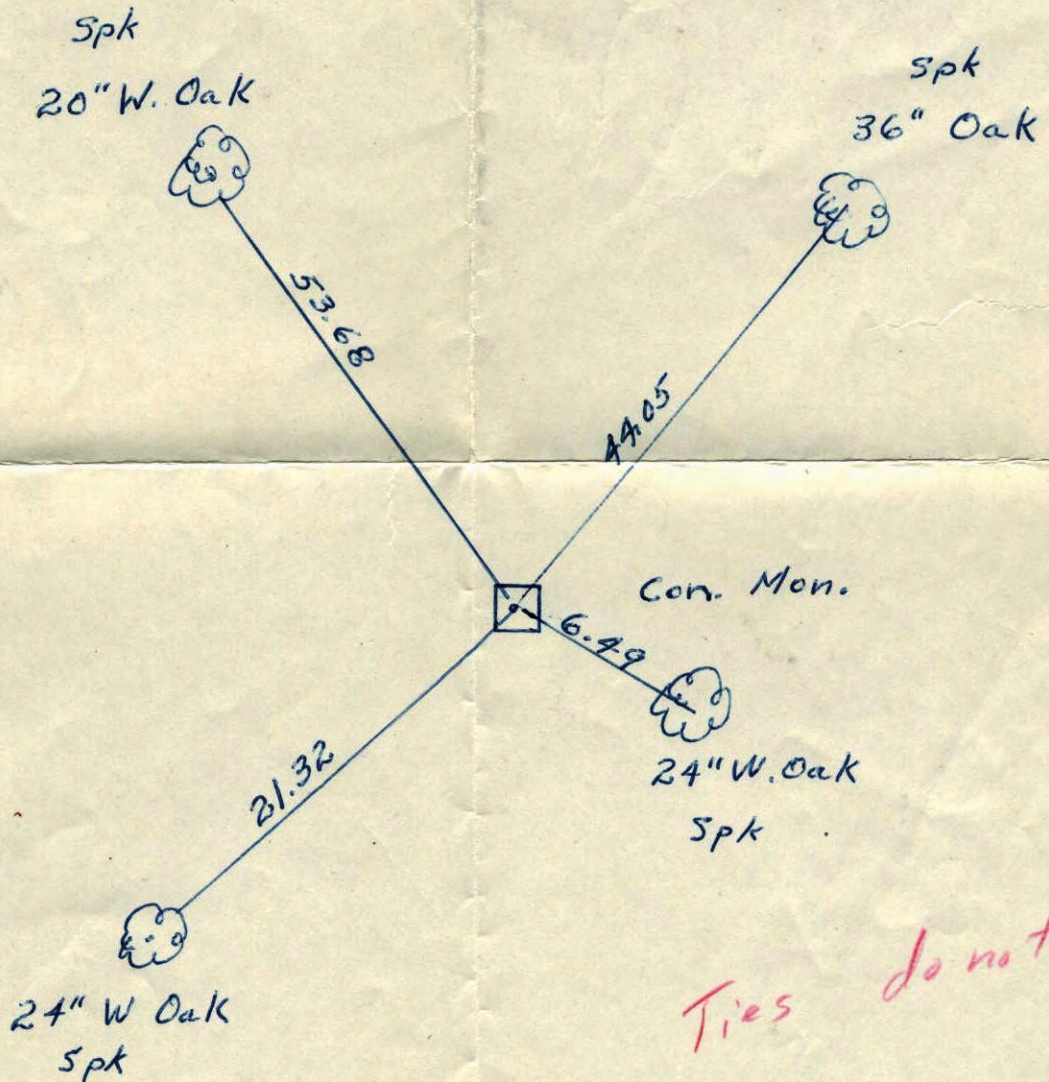
TIE to Corner.

by DONN E. PEPPER

Caswell Engineering Co.

found April, 1956

Flush



Ties do not fit

NW 16

~~NE~~ Corner. Government Lot 1 Sec. 17,  
Township 31, Range 24

TIE to Corner.

by DONN E PEPPER  
Caswell Engineering Co.  
found April 1956  
down 0.8'

