

CERTIFICATE OF LOCATION OF GOVERNMENT CORNER

County of Anoka

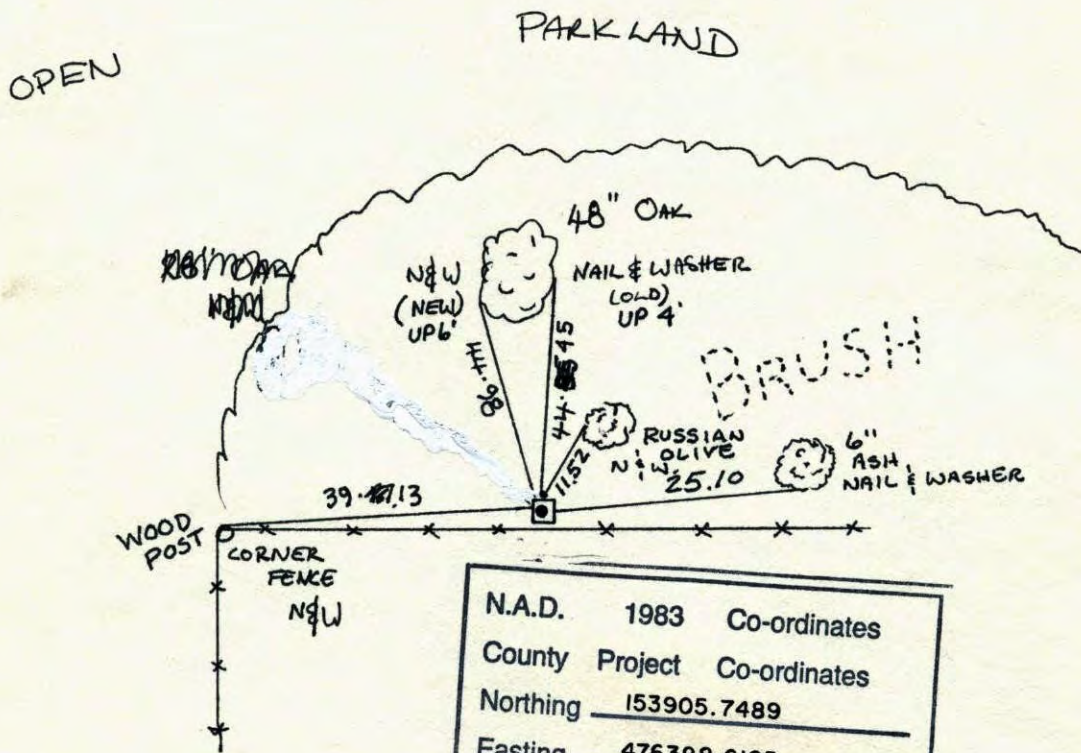
State of Minnesota

NORTH QUARTER Corner of Sec. 17 Township 31 Range 24

I hereby certify that on the 18th day of JULY, 1960, I found the described corner which was evidenced by CONCRETE MONUMENT.

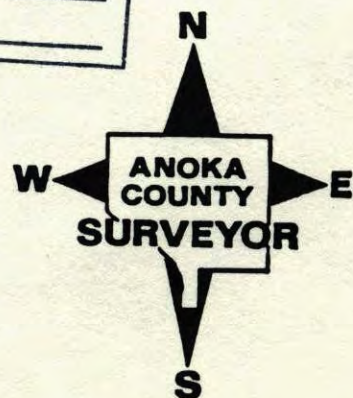
and I further certify that to perpetuate the location of said corner, I did, at the exact location thereof, place a permanent marker consisting of CONCRETE MONUMENT WITH IRON PIPE ON NORTH SIDE

which reference or witness monuments are located in the manner following:



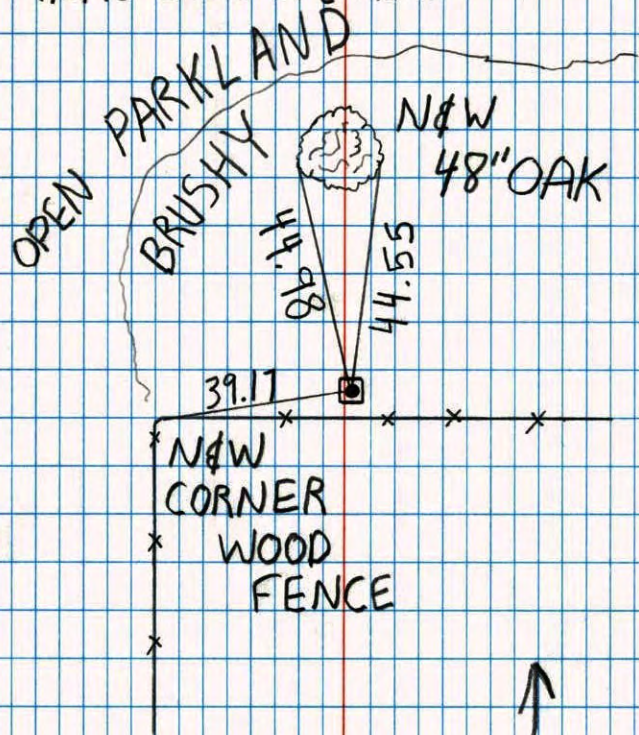
N.A.D.	1983	Co-ordinates
County	Project	Co-ordinates
Northing		<u>153905.7489</u>
Easting		<u>476398.6185</u>
State Plane Co-ordinates		
Y		_____
X		_____
Date _____		

Revised date	Revised date	Revised date
7-21-83		
11-12-91		
8-16-94		
11-1-01		



N 1/4 Sec. 17 T.31 R.24

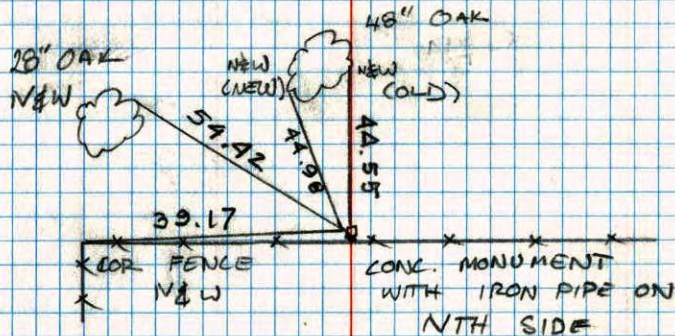
Retie Concrete Mon.



Jayme Anderson
Josh
8-19-94

NORTH QUARTER SECT 17 T 31. R 24

RETIE CONCRETE MONUMENT
WITH IRON PIPE ON NTH SIDE



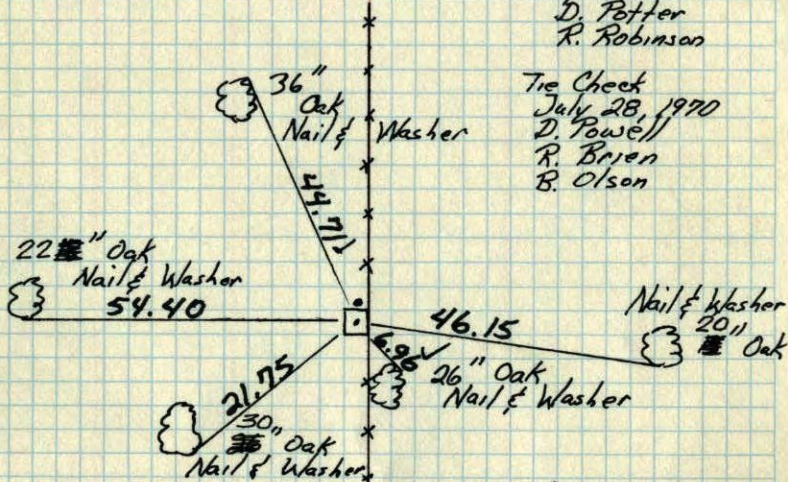
B. KLEMTZ
M. STEWART
11-12-91

N 1/4 Cor. Sec. 17-T31-R24

Conc. Mon. flush, Iron pipe on North side

July 18, 1960
D. Potter
R. Robinson

Tie Check
July 28, 1970
D. Powell
R. Brien
B. Olson



TIE CHECK
JULY 8, 1974
R. FARMER
N.D.
D.D.

TIE CHECK JUNE 21, 1977 P. SANJERUD S. BRIEN J. STEPHENS	TIE CHECK 7-10-80 B. STEPHENS P. ROSS P. HORNBY
--	---

ROLAND W. ANDERSON
COUNTY SURVEYOR
ANOKA COUNTY, MINNESOTA

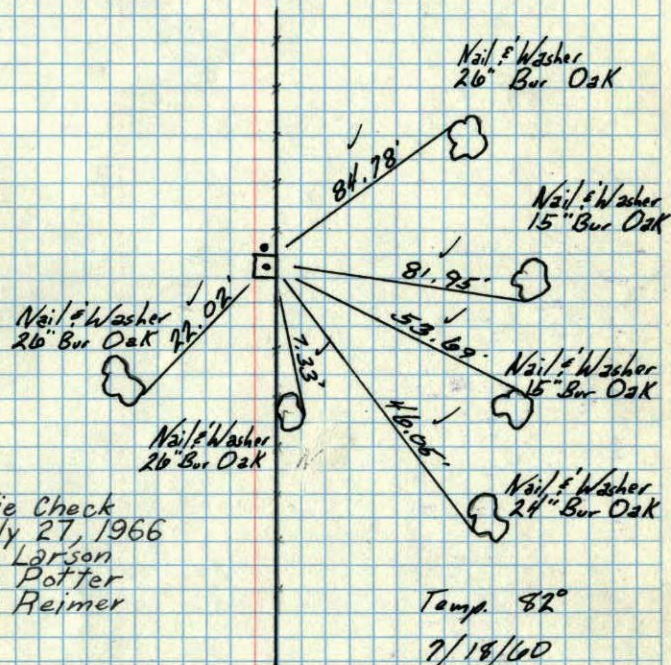
TEMPERATURE CORRECTED
AND HORIZONTALLY
TAPED MEASUREMENTS

Ghostleys

N 1/4 Cor. Sec 17 - T31 - R 24

Concrete Monument
flush to the North
1' ± North old fence Post

TEMPERATURE CORRECTED
AND HORIZONTALLY
TAPED MEASUREMENTS



Tie Check
July 27, 1966
H. Larson
D. Potter
G. Reimer

Temp 82°
7/18/60

ROLAND W. ANDERSON
COUNTY SURVEYOR
ANOKA COUNTY, MINNESOTA

D. Potter
R. Robinson
Retie 9/2/64
M.D. Anderson
J. Dunlop

N¹/₄ Cor. 17, T 31, R 24

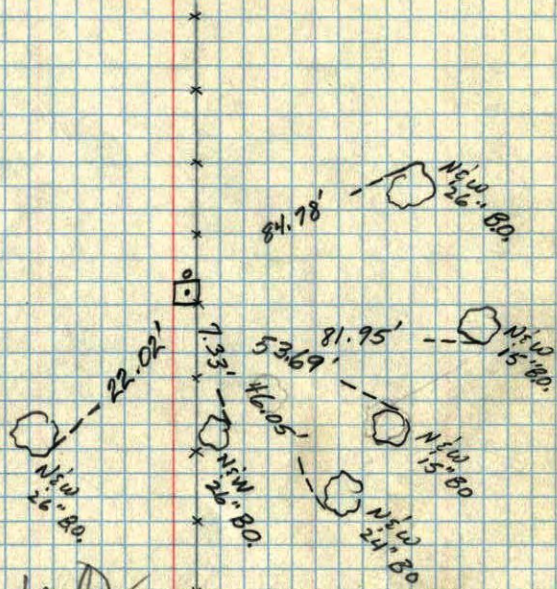
Concrete Monument

slush
iron to the North

1" North old fence post

7/17/60

82°



~~8/15/60~~

25

N¹/₄ 17, T 31 R 24

3X.3 Granite

3X.3 Granite mon.
up O.I. drill hole
in center

28" W.O.
1 nail

18" W.O.
X nails

22" W.O.
3 nails

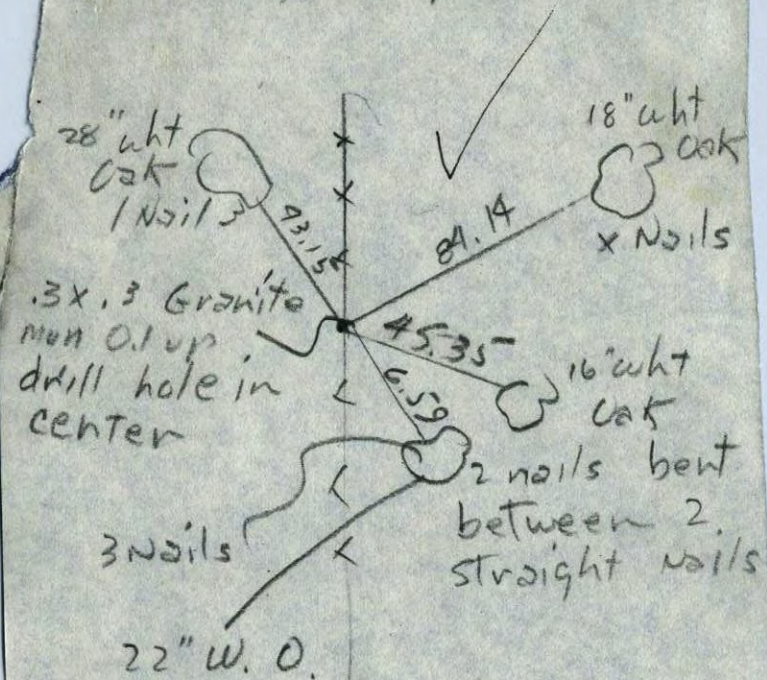
16" W.O.
2 nails bent
between 2
straight nails

8/19/59

C.H. Parker

N 1/4 17 31 24

8/19/59 CHP

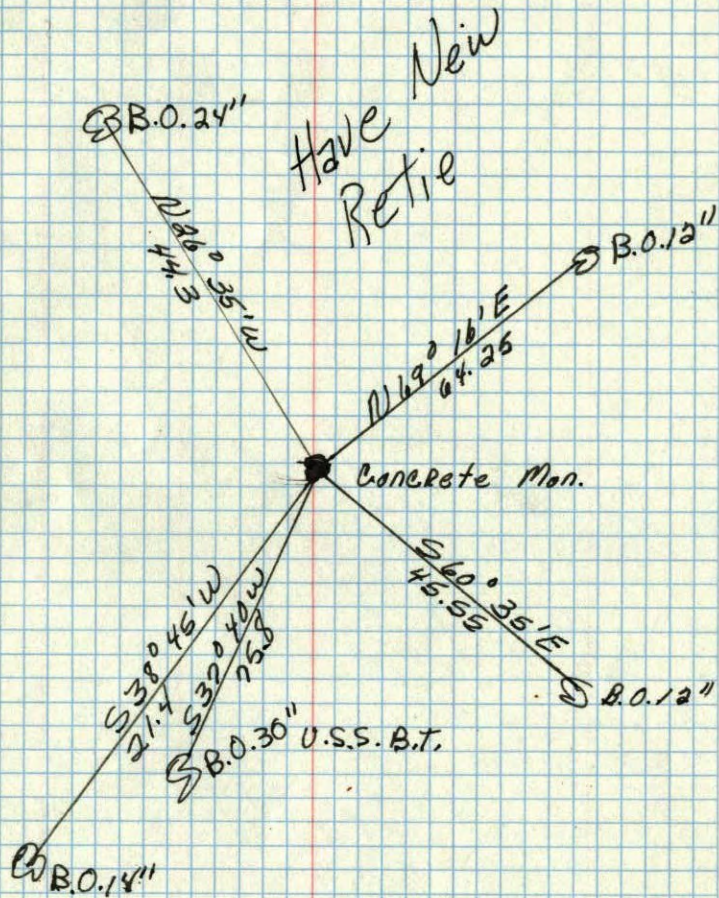


N 17

25 ✓

SW corner of Sec. 8 T. 31 R. 24

Concrete Mon. flash



MAY 26, 1943
CARTWRIGHT