

CERTIFICATE OF LOCATION OF GOVERNMENT CORNER

County of Anoka

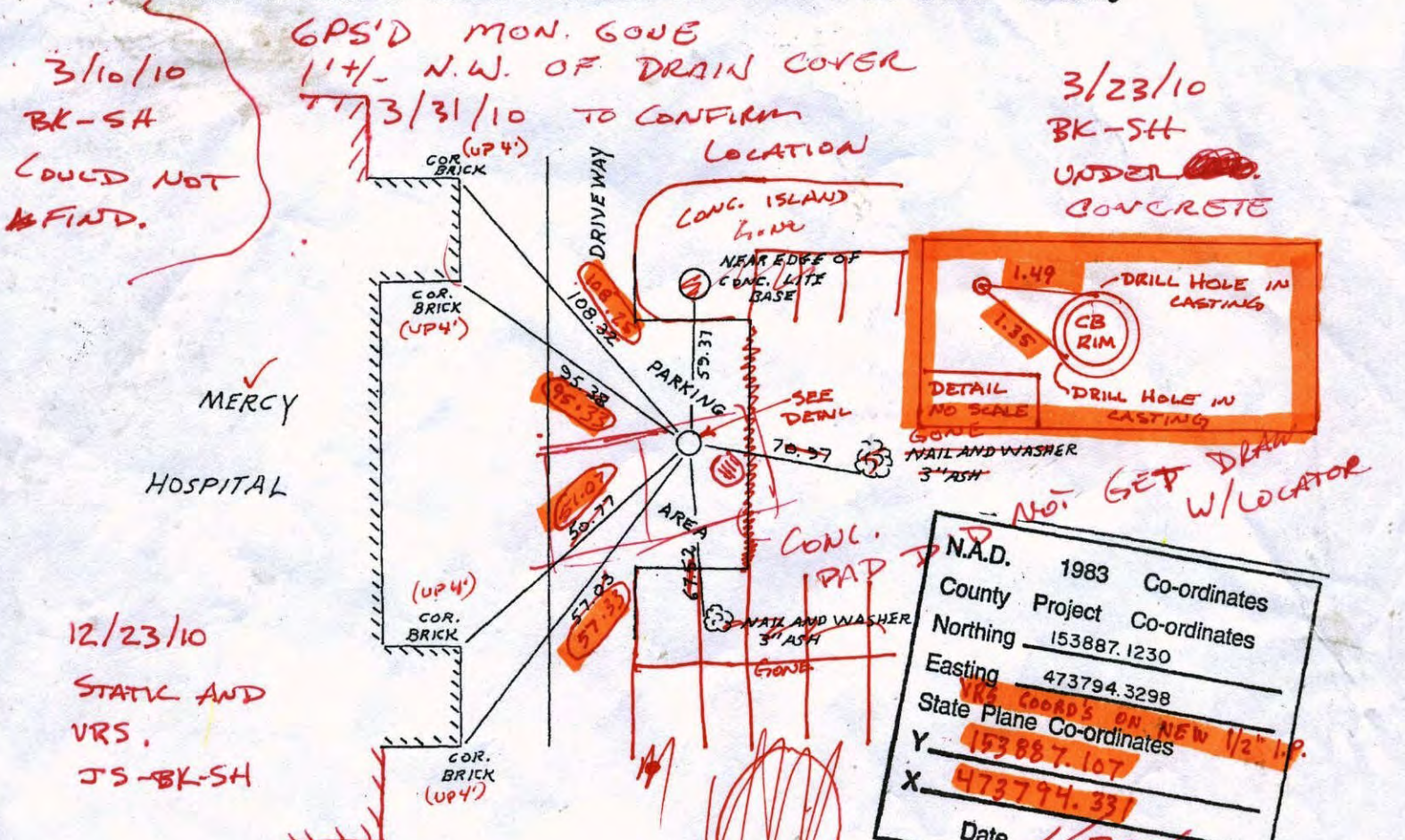
State of Minnesota

S.W. Corner of Sec. 8 Township 31 Range 24

I hereby certify that on the 21st day of Nov., 1983, I found the described corner which was evidenced by EAST IRON MONUMENT WHICH WAS REMOVED FOR CONSTRUCTION

and I further certify that to perpetuate the location of said corner, I did, at the exact location thereof, place a permanent marker consisting of ~~CAST IRON MONUMENT~~
SET 1/2" IP CAPPED IN CONC.

which reference or witness monuments are located in the manner following:



Revised date	By
11-21-83	H. LARSON
6-19-86	D. ROSS
8-14-90	M. ZIMMERMAN
8-16-94	

Minnesota State Plane Coordinates
South Zone

Y _____ X _____

County Surveyor _____ Date _____
Registered Land Surveyor No. _____

1/31/11
 JS. S.H.
 SET IP AND
 VRS POSITION
 W/NEW TIES

CERTIFICATE OF LOCATION OF GOVERNMENT CORNER

County of Anoka

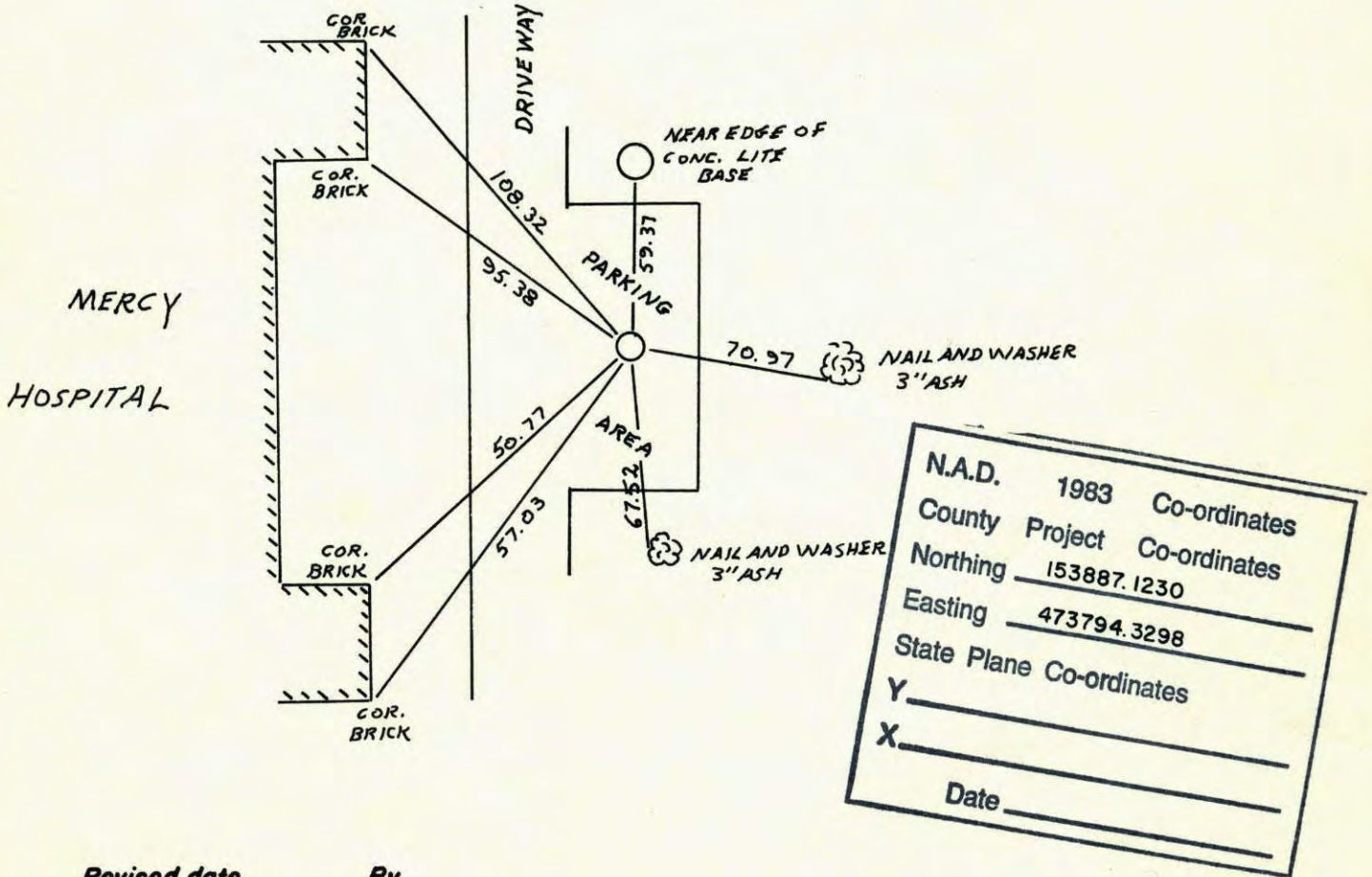
State of Minnesota

S.W. Corner of Sec. 8 Township 31 Range 24

I hereby certify that on the 21st day of NOV., 1983, I found the described corner which was evidenced by CAST IRON MONUMENT WHICH WAS REMOVED FOR CONSTRUCTION

and I further certify that to perpetuate the location of said corner, I did, at the exact location thereof, place a permanent marker consisting of CAST IRON MONUMENT

which reference or witness monuments are located in the manner following:



N.A.D.	1983	Co-ordinates
County	Project	Co-ordinates
Northing	153887.1230	
Easting	473794.3298	
State Plane Co-ordinates		
Y	_____	
X	_____	
Date	_____	

Revised date	By
11-21-83	H. LARSON
6-19-86	D. ROSS
8-14-90	M. ZIMMERMAN
8-16-94	

Minnesota State Plane Coordinates
South Zone

Y _____ X _____

County Surveyor _____

Date _____

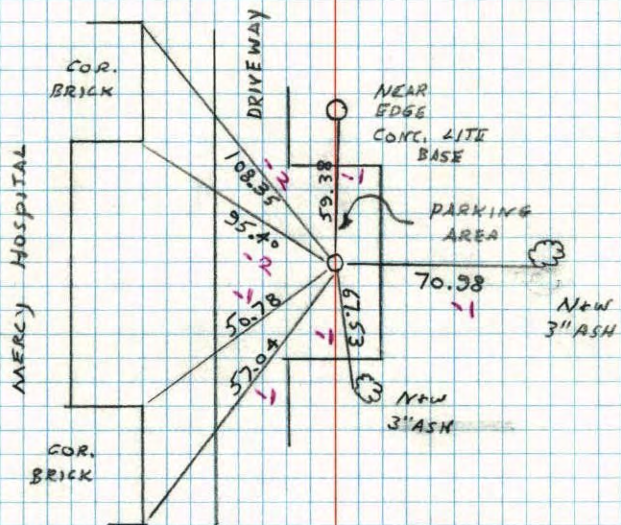
Registered Land Surveyor No. _____

SW COR. SEC. 8

T31 R24

REPLACED CAST IRON MONUMENT AFTER CONSTRUCTION C.I. FLUSH PK'S 200' E.+S.

206' 35" 11-21-83 N. LARSON R. KRIVISER



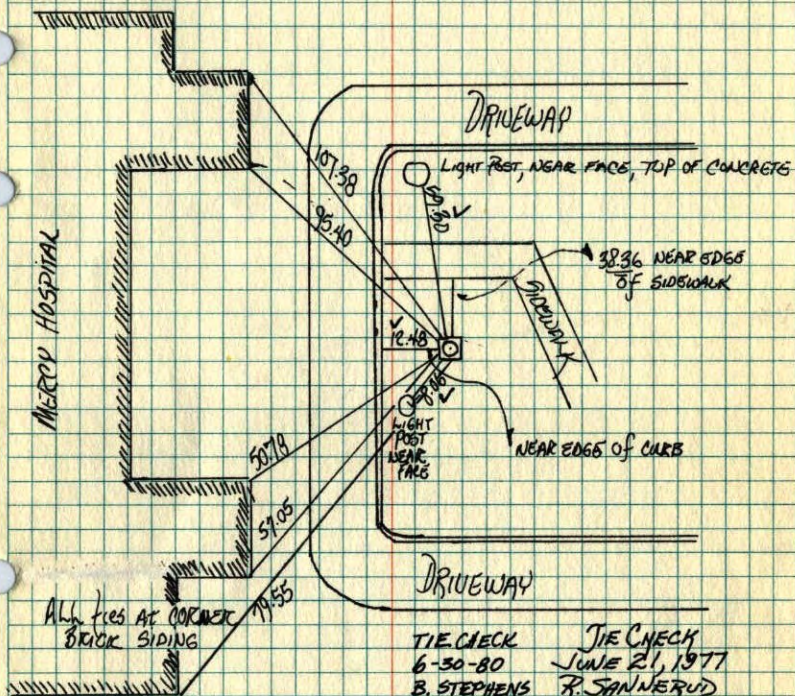
WHICH WASH

S.W. Cor. Sec. 8 T.31 R.24

GET CAST IRON MONUMENT FROM CONSTRUCTION TIES AND RETIED

JUNE 14 1974

R. FARMER
N. DAHL
D. DAHL



TIE CHECK 6-30-80 B. STEPHENS P. ROSS P. HORNBY	TIE CHECK JUNE 21, 1977 R. SPANNERUD S. BRIEN J. STEPHENS
---	---

SEE NEW TIES HL.

TEMPERATURE CORRECTED AND HORIZONTALLY TAPED MEASUREMENTS

ROLAND W. ANDERSON
COUNTY SURVEYOR
ANOKA COUNTY, MINNESOTA

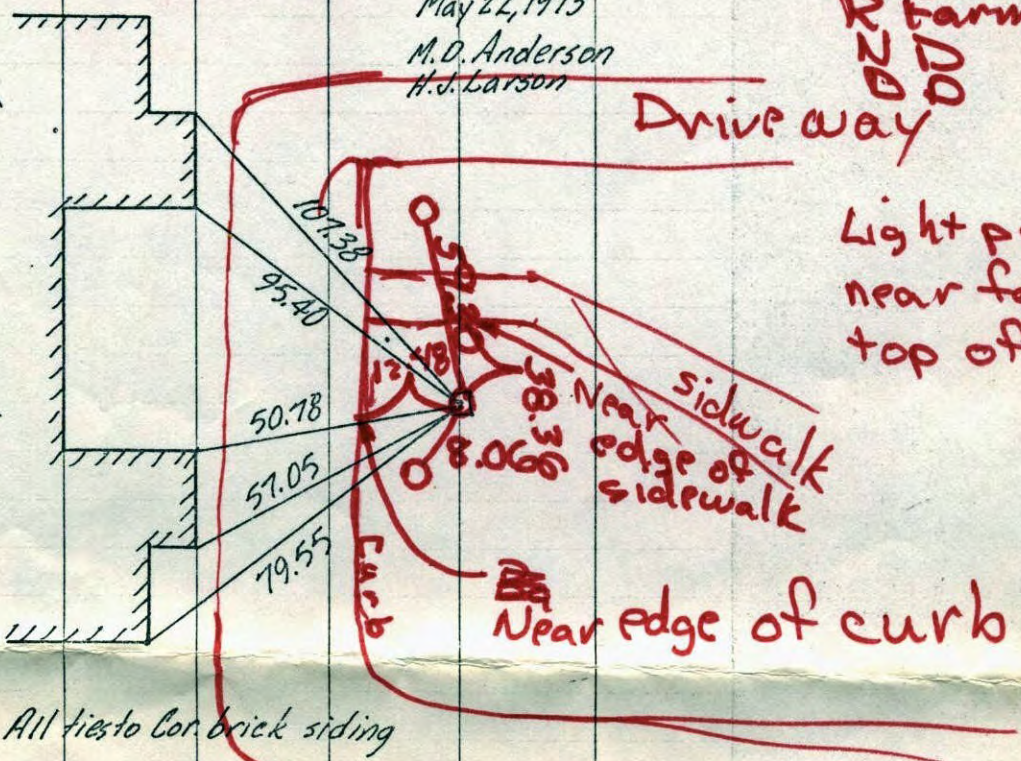
S.W. Cor. Sec. 8-T 31-R24
used area platting to find Conc. Mon.
found in place undisturbed

set cast iron mon from const. ties
and retied

JUN 14, 74
R Farmer
N
D
D
D

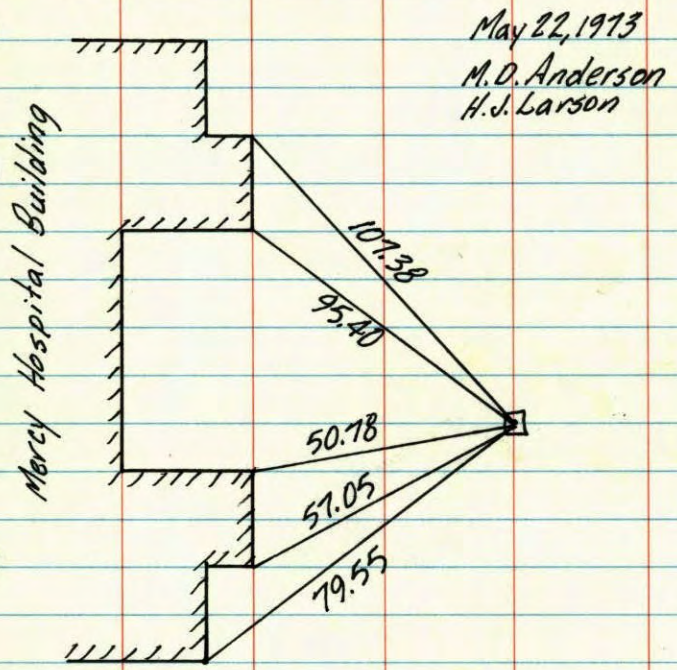
May 22, 1913
M.D. Anderson
H.J. Larson

Mercy Hospital Building



ROLAND W. ANDERSON
COUNTY SURVEYOR
ANOKA COUNTY, MINNESOTA
TEMPERATURE CORRECTED
AND HORIZONTALLY
TAPED MEASUREMENTS

S.W. Cor. Sec. 8-T 31-R24
used area platting to find Conc. Mon.
found in place undisturbed

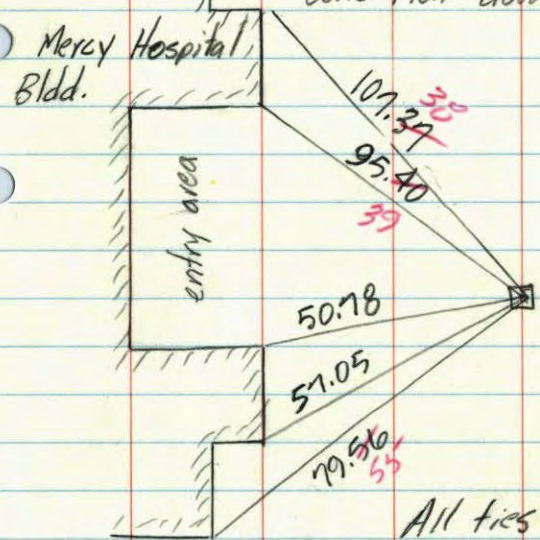


May 22, 1973
M.O. Anderson
H.J. Larson

All ties to Cor. brick siding

ROLAND W. ANDERSON
COUNTY SURVEYOR
ANOKA COUNTY, MINNESOTA
TEMPERATURE CORRECTED
AND HORIZONTALLY
TAPED MEASUREMENTS

S.W. Cor. Sec. 8-T 31-R24
found Conc. Mon. undisturbed. Used area
platting to find.
Placed 1/2" I.P. over &
Conc. Mon. down 18"



May 22, 1973
M.O. Anderson +
H.J. Larson +
temp. 65° 2.K.
tape #13 -

All ties to Cor.s of
brick siding

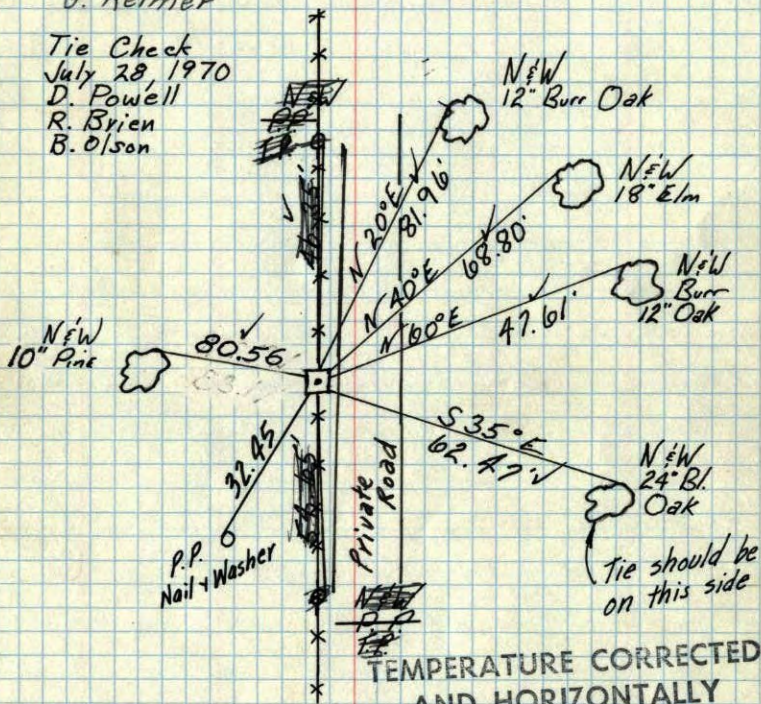
SW CORN. Sec. 8, T.31, R24

Conc. Mon. Down $\theta = 0.5^\circ$

All ties & Mon. gone
May 9, 1973
M. D. Anderson

Tie Check
July 27, 1966
H. Larson
D. Potter
G. Reimer

Tie Check
July 28, 1970
D. Powell
R. Bryen
B. Olson



TEMPERATURE CORRECTED
AND HORIZONTALLY
TAPED MEASUREMENTS

6/17/60

Roland Anderson
R. Carlson - Assist.

Retie 9/2/64

M. D. Anderson
J. Dunlop

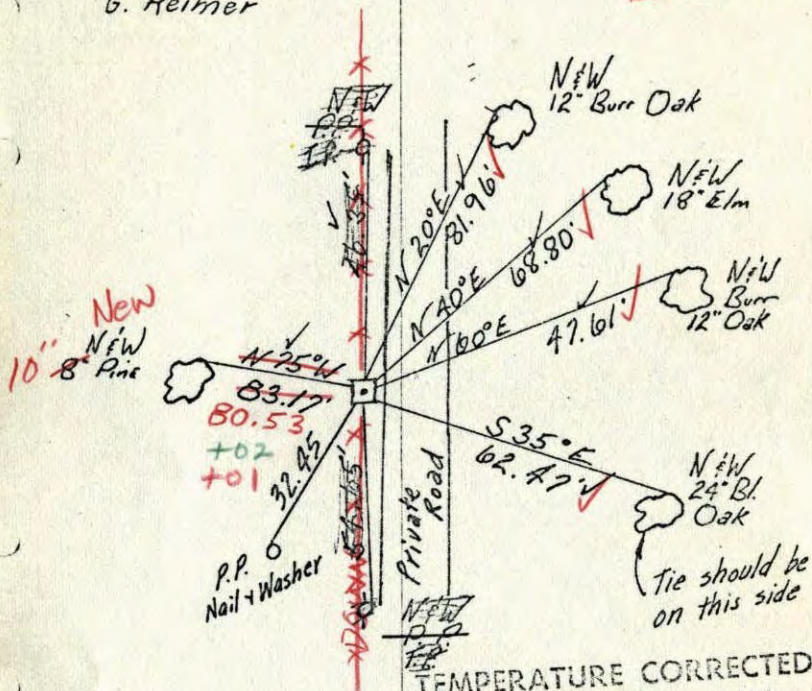
ROLAND W. ANDERSON
COUNTY SURVEYOR
ANOKA COUNTY, MINNESOTA

SW CORN. Sec. 8, T.31, R24

Conc. Mon. Down $\theta = 0.5^\circ$

7/28/70
✓ #10-940 ✓
D. Powell
R. Bryen
B. Olson

Tie Check
July 27, 1966
H. Larson
D. Potter
G. Reimer



TEMPERATURE CORRECTED
AND HORIZONTALLY
TAPED MEASUREMENTS

6/17/60

Roland Anderson
R. Carlson - Assist.

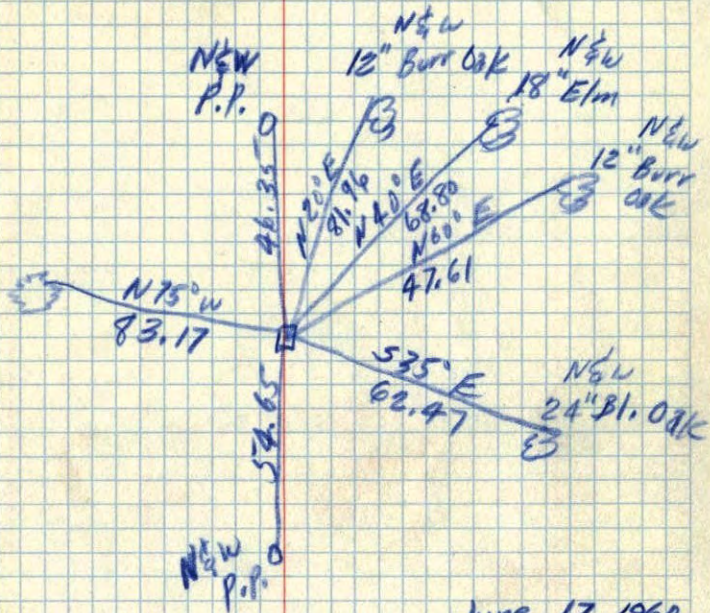
Retie 9/2/64

M. D. Anderson
J. Dunlop

ROLAND W. ANDERSON
COUNTY SURVEYOR
ANOKA COUNTY, MINNESOTA

SW Corn. Sec. 8, T31, R24

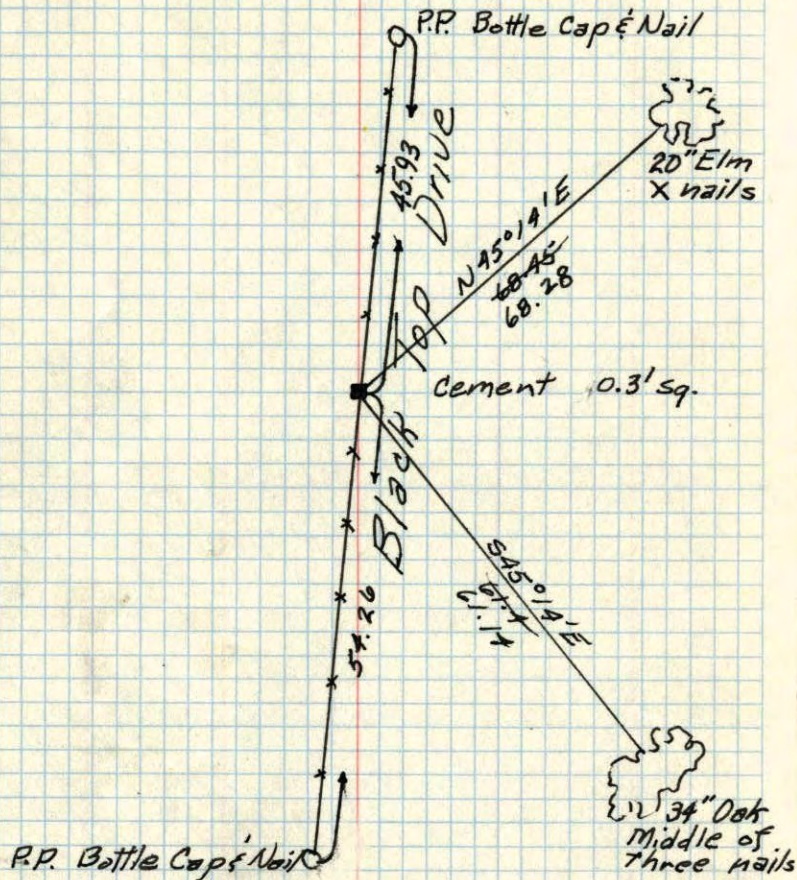
Conc. Mon. Down 0.1'



June 17, 1960
R. Carlson Assisting

6/20/60

S.W. CORNER of Sec. 8, T31, R24
Concrete Mon. Flush

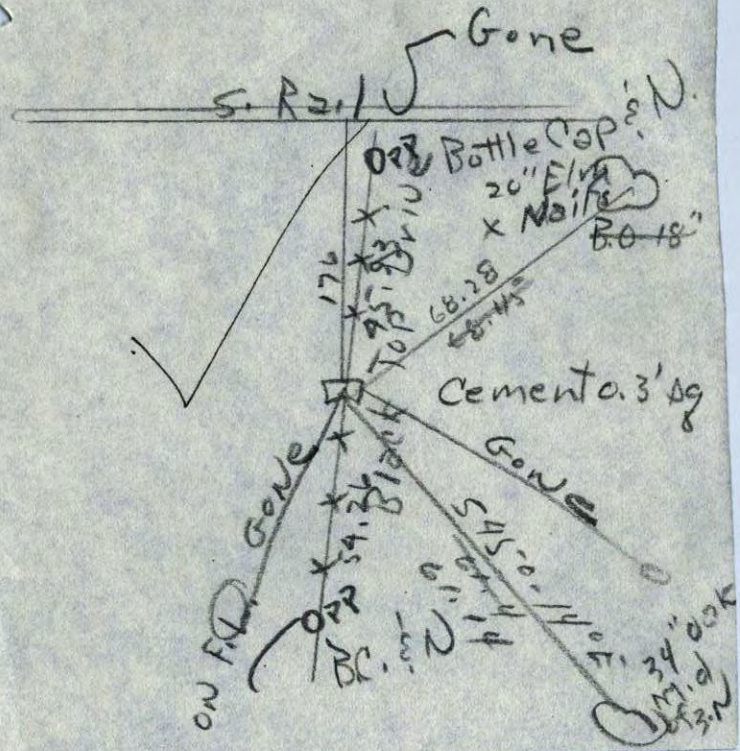


8/19/59
C.H. Parker

SW 1/8 No. 56

17 31 2 K

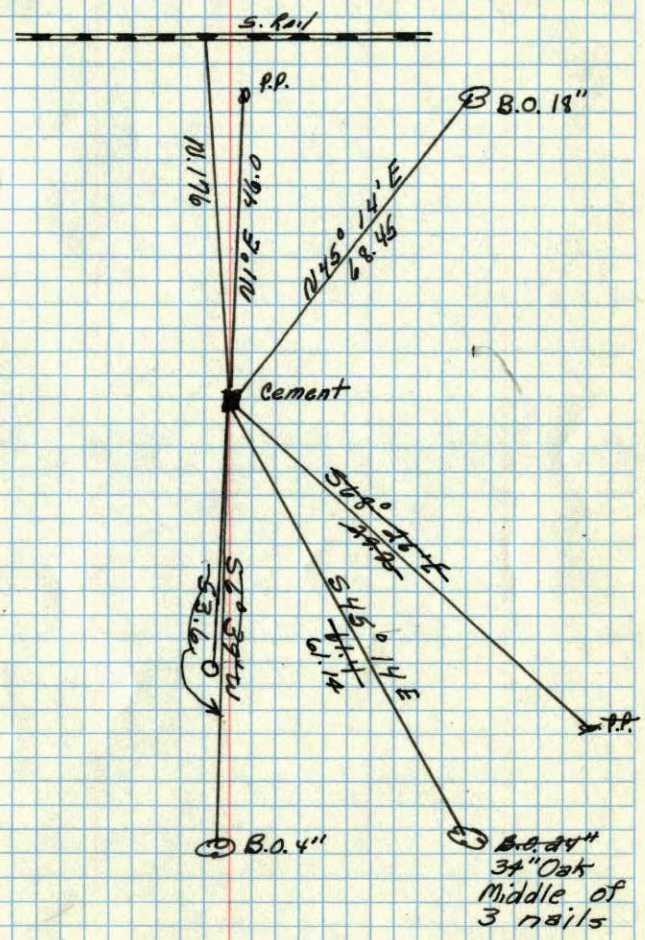
8/19/59 C.H. Parker 2055



SW corner of Sec. 9 T.31N R.24W

Cement to Mon. Flush

Have New tile



May 26, 1943
Cartwright