

CERTIFICATE OF LOCATION OF GOVERNMENT CORNER

County of Anoka

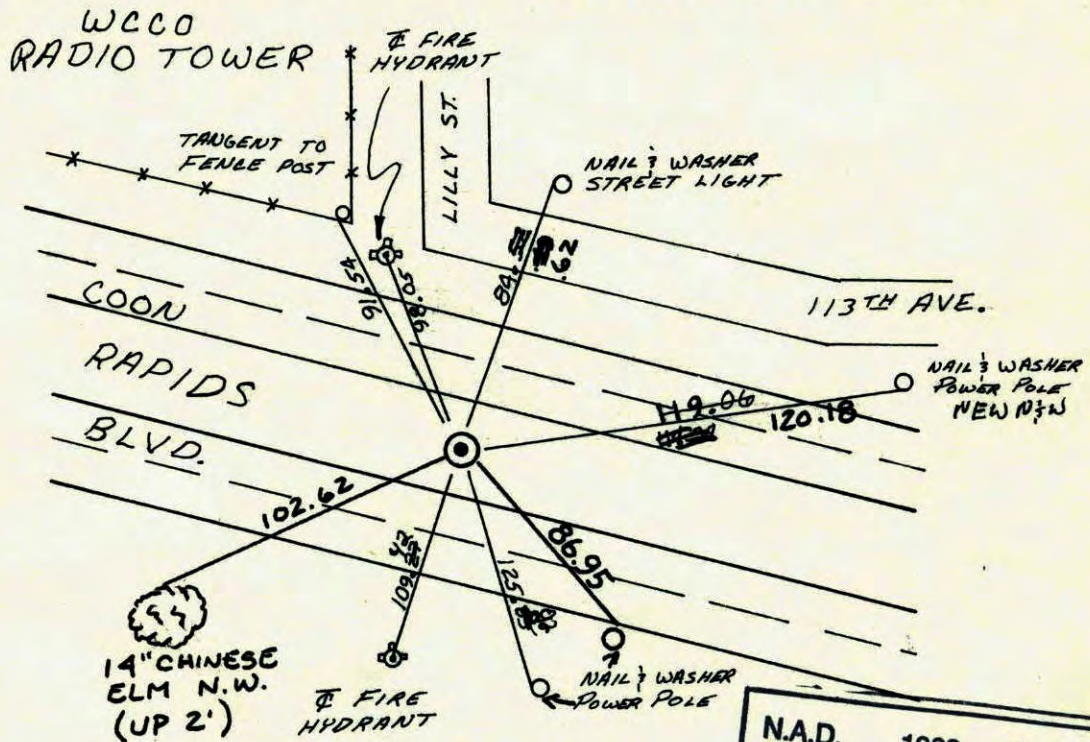
State of Minnesota

WEST ONE QUARTER Corner of Sec. 16 Township 31 Range 24

I hereby certify that on the 1 day of AUGUST, 1960, I found the described corner which was evidenced by 1" BRASS PLUG

and I further certify that to perpetuate the location of said corner, I did, at the exact location thereof, place a permanent marker consisting of CAST IRON MONUMENT

which reference or witness monuments are located in the manner following:



N.A.D.	1983	Co-ordinates
County	Project	Co-ordinates
Northing	<u>151252.4590</u>	
Easting	<u>478959.2288</u>	
State Plane Co-ordinates		
Y	_____	
X	_____	
Date	_____	

Revised date
7-3-80
7-20-83
REDRAWN
1-10-84
6-17-86
8-30-90
8-19-94 RE-PLACED
8-30-01

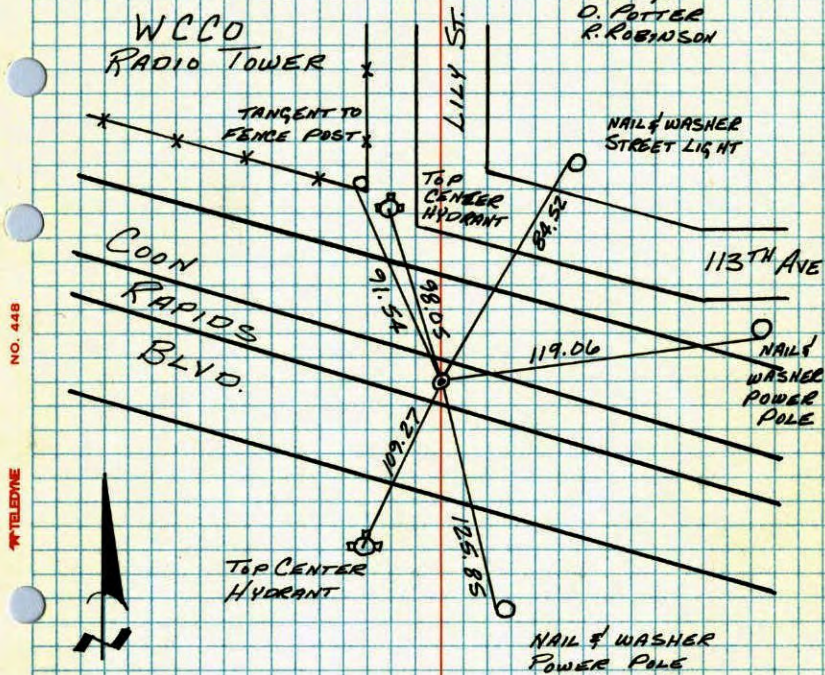
By
B.S. P.R. P.H.
P.R. J.B. J.V.
R. KREUSER
D. ROSS
M. Zimmerman
BCK

Minnesota State Plane Coordinates
South Zone
 Y _____ X _____
 _____ , _____
County Surveyor _____ **Date** _____
Registered Land Surveyor No. _____

W 1/4 CORNER SECTION 16-T31-R24

CAST IRON MONUMENT DOWN .5". RETIED AFTER
CONSTRUCTION. CAST IRON PROVED OUT BY PLATS OF
"LARSONS 2ND ADDITION", "SUNDQUIST ADDITION", AND
"CARDINAL HEIGHTS PLAT 4".

1 AUG 60
B. ROGER
O. POTTER
R. ROBINSON



76 CHECK
3-JUL 80
B. STEPHENS
P. ROSS
P. HORNBY

TEMPERATURE CORRECTED
AND HORIZONTALLY
TAPED MEASUREMENTS

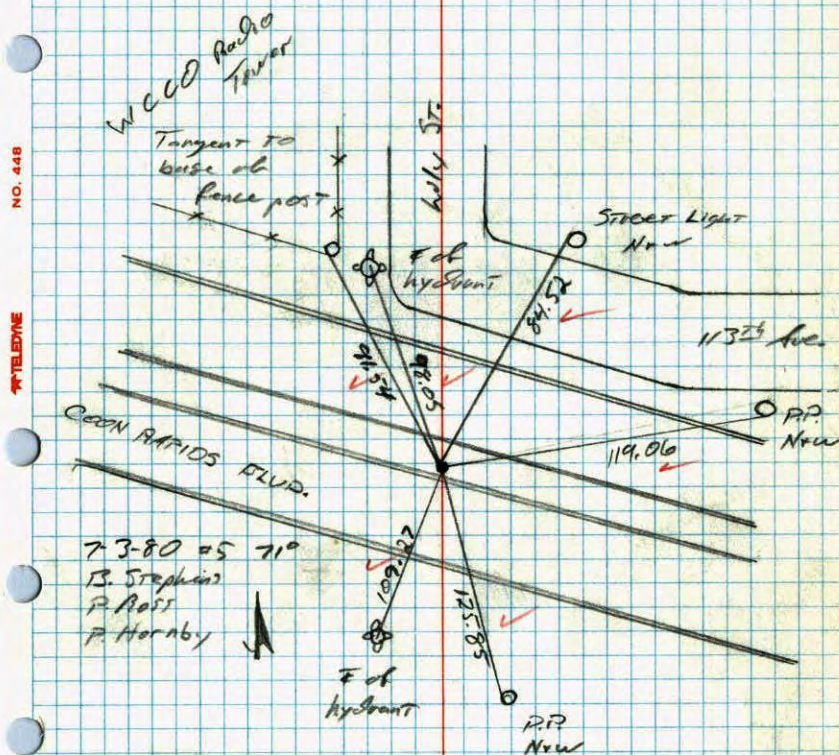
ROLAND W. ANDERSON
COUNTY SURVEYOR
ANOKA COUNTY, MINNESOTA

NO. 448

TELEPHONE

W 1/4 Cor. Sec. 16 T-31 R-24

CAST IRON MONUMENT DOWN .5". RETIED AFTER
CONSTRUCTION. C.I. MON. PROVED OUT
BY PLATS OF (LARSON 2ND ADD.) AND
(SUNDQUIST ADD.) (CARDINAL HEIGHTS PLAT 4)



73-80 25 71°
B. STEPHENS
P. ROSS
P. HORNBY

NO. 448

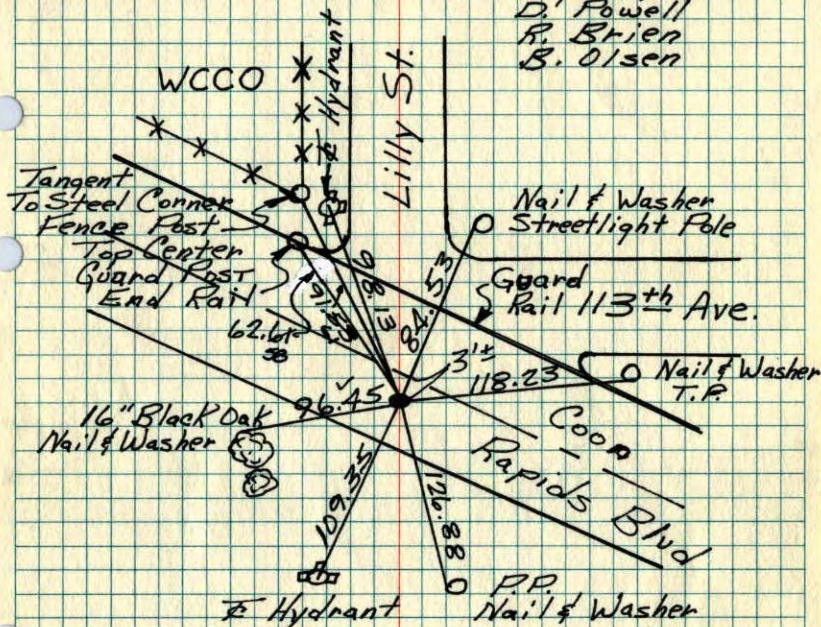
TELEPHONE

W 1/4 Cor. Sec 16-T31-R24

1" Round Brass Plug

Replaced Plug With Cast Iron Monument
Flush. PK's 2.00' North + East

July 28, 1970
D. Powell
R. Brien
B. Olsen



Tie Check (NEW)
July 1, 1974
R. Farmer
D. Dahl
N. Dahl

Temp 84°
8/1/60
Bill Rogers
Dennis Potter
Ralph Robinson

Tie Check
June 21, 1977
R. Spangler
S. Brien
J. Stephens

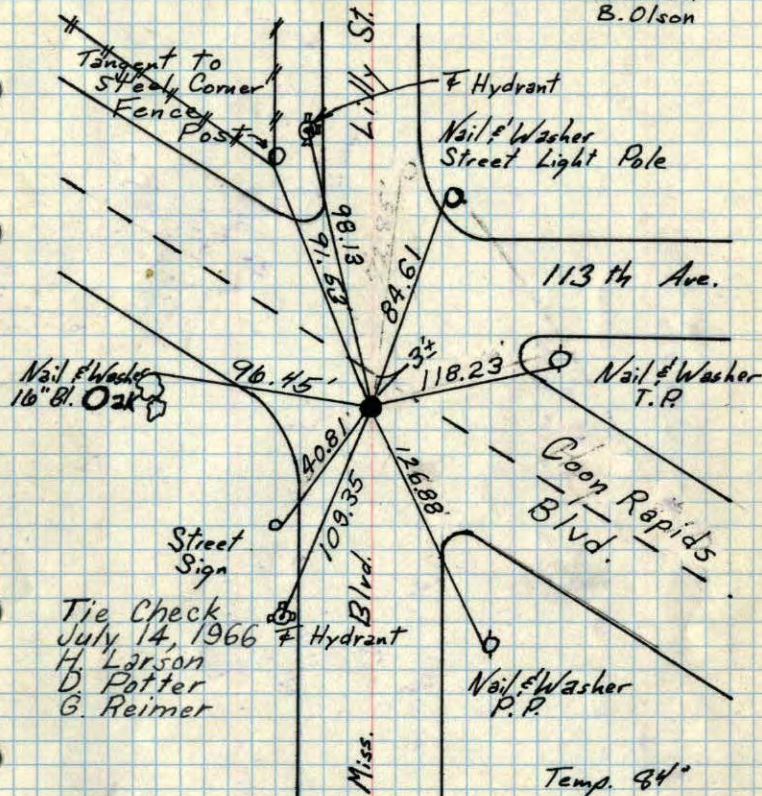
SEE NEW TIES

ROLAND W. ANDERSON COUNTY SURVEYOR ANOKA COUNTY, MINNESOTA
TEMPERATURE CORRECTED AND HORIZONTALLY TAPED MEASUREMENTS

W 1/4 Cor. Sec 16-T31-R24

1" Round Brass Plug
Replaced Plug with Cast Iron Monument
Flush. PK's 2.00' North + East. July 28, 1970

D. Powell
R. Brien
B. Olson



Tie Check
July 14, 1966
H. Larson
D. Potter
G. Reimer

Temp. 84°
8/1/60

Bill Rogers
Dennis Potter
Ralph Robinson
Tie Check

TEMPERATURE CORRECTED AND HORIZONTALLY TAPED MEASUREMENTS

ROLAND W. ANDERSON COUNTY SURVEYOR ANOKA COUNTY, MINNESOTA

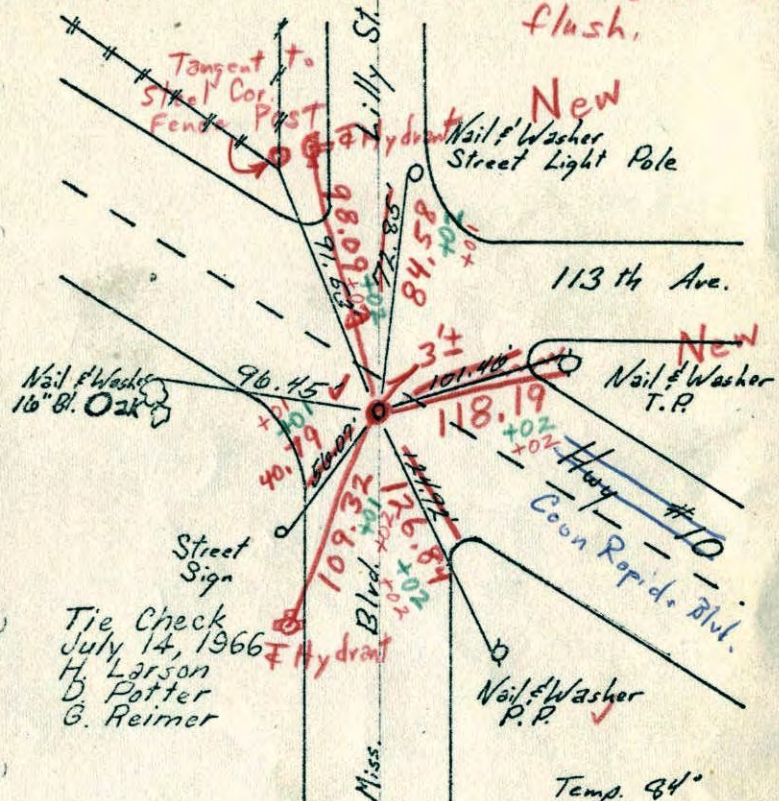
X

51

W 1/4 Cor. Sec 16-T31-R24

1" Round Brass Plug

Flush PK's 2.00' N+E
Replaced with short broken off C.I. Man.
flush.



TEMPERATURE CORRECTED
AND HORIZONTALLY
TAPED MEASUREMENTS

ROLAND W. ANDERSON
COUNTY SURVEYOR
ANOKA COUNTY, MINNESOTA

Temp. 84°

8/1/60

Bill Rogers
Dennis Potter
Ralph Robinson

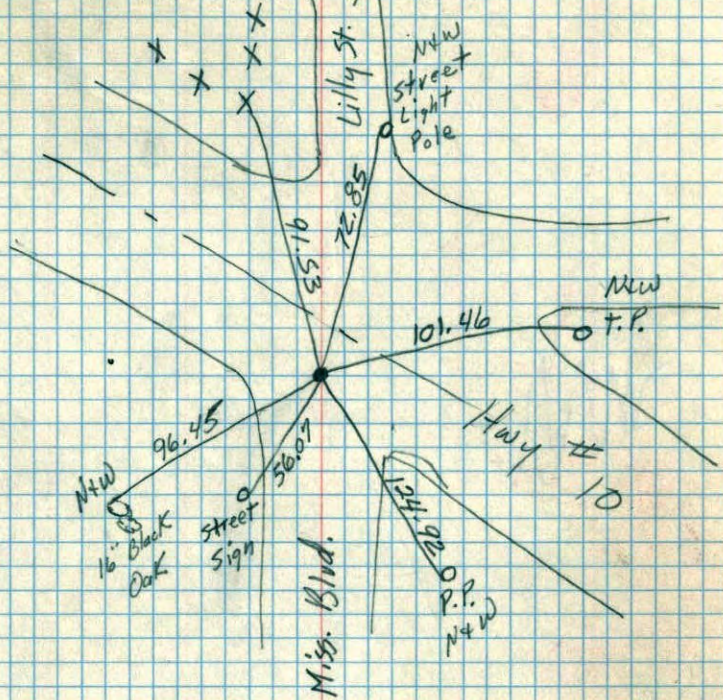
7/28/70
#10-940J
D. Powell
R. Brien
B. Olson

124
91
33 35.84

84.32
25.32
109.32

W 1/4 Cor. Sec. 16 + 31 R24

1" Round Brass Plug Flush



Temp. 84°

8/1/60

Bill Rogers
Dennis Potter
Ralph Robinson

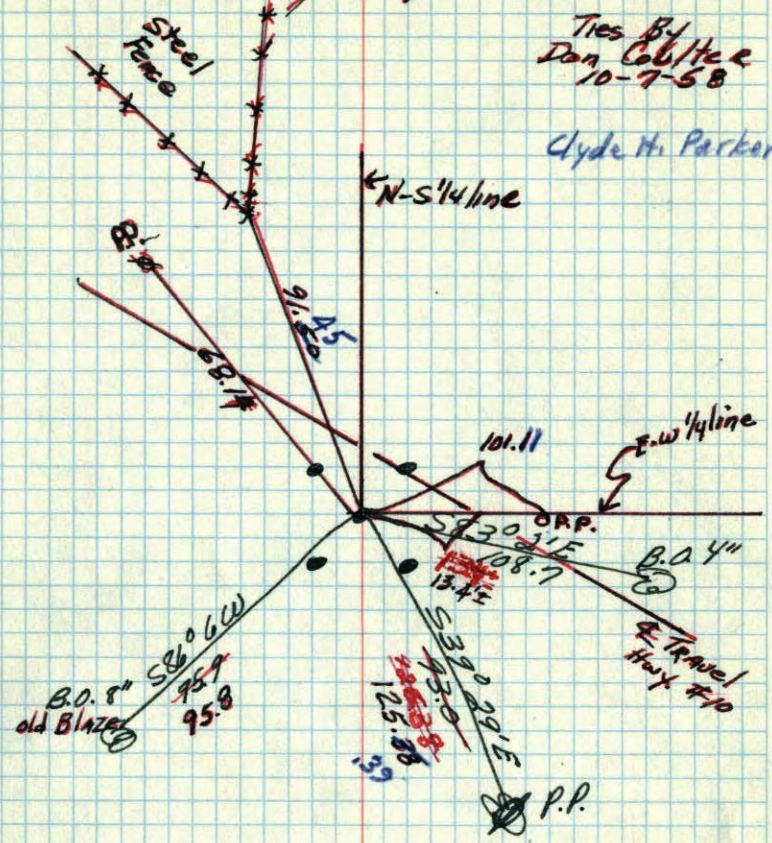
8/1/60

W 1/4 corner of Sec. 16 to 31 R24

3/4" Brass Plug in Hwy. Down 0.1

Ties By
Don Coulter
10-7-58

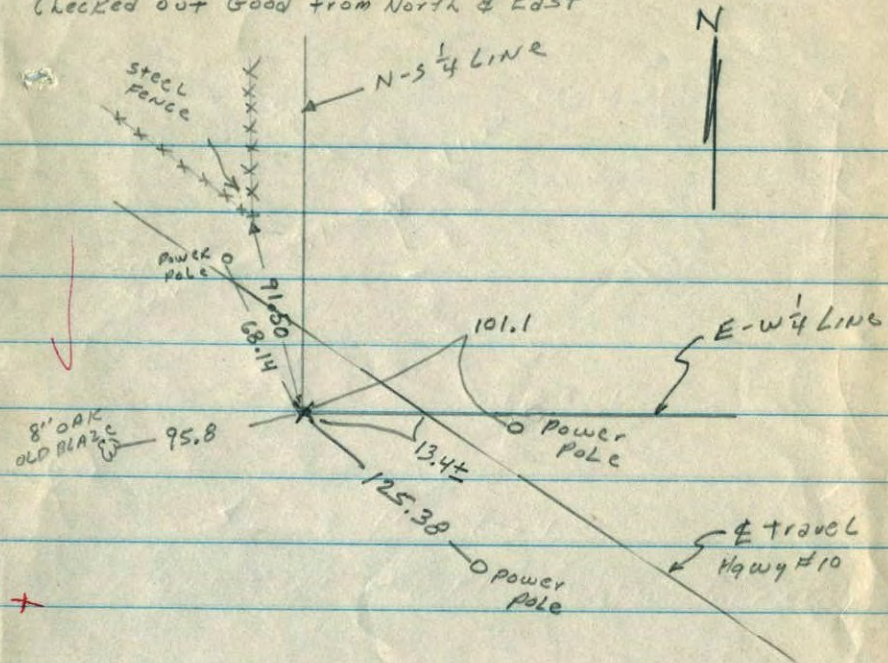
Clyde H. Parker



May 20, 1944
Coulter

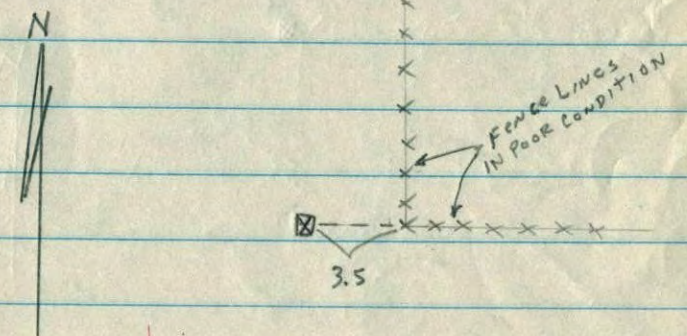
W 1/4 Cor 16-31-24

3/4" BRASS PLUG IN Highway Down 0.1
Checked out Good from North & East



E 1/4 Cor 16-31-24

FOUND CONC. MON. 1.5 BELOW SURFACE



Ties by Don Coulter for Harry S. Johnson Assoc.
10-7-58