

CERTIFICATE OF LOCATION OF GOVERNMENT CORNER

County of Anoka

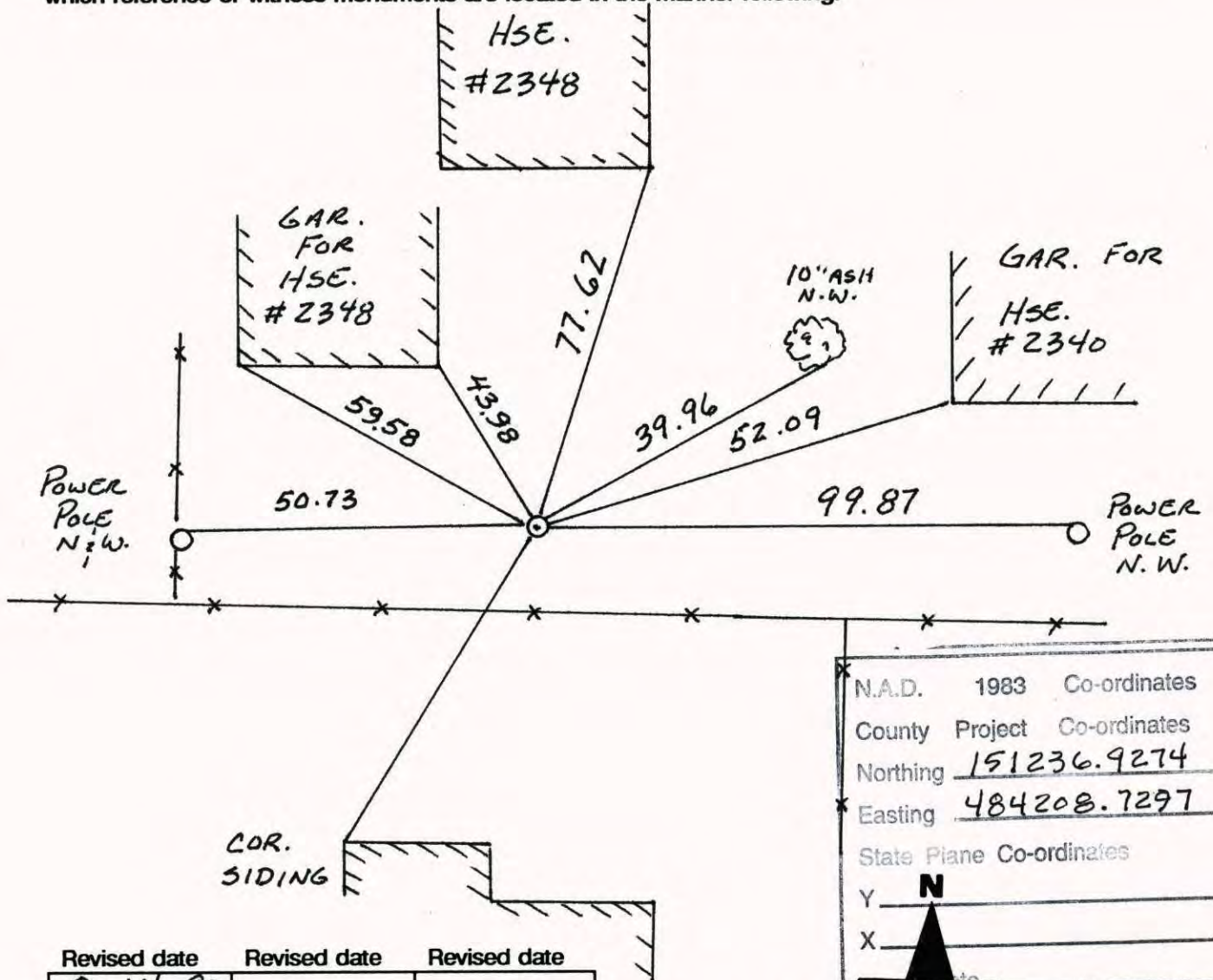
State of Minnesota

EAST 1/4 Corner of Sec. 16 Township 31 Range 24

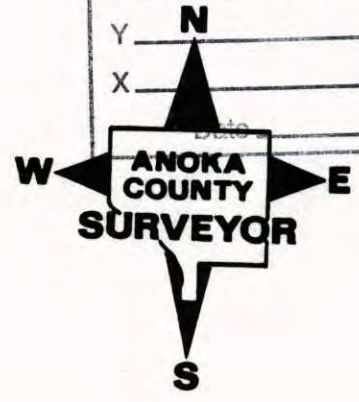
I hereby certify that on the 5 day of JUNE, 1964, I found the described corner which was evidenced by CONCRETE

and I further certify that to perpetuate the location of said corner, I did, at the exact location thereof, place a permanent marker consisting of CAST IRON MONUMENT

which reference or witness monuments are located in the manner following:



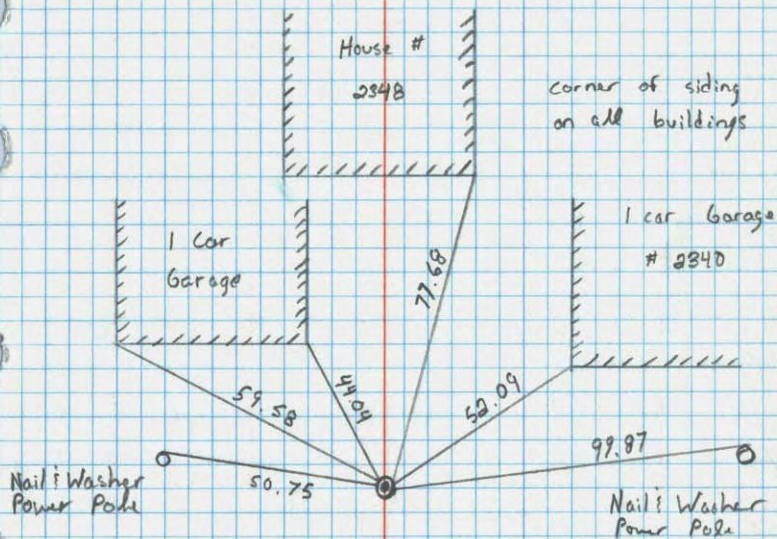
N.A.D.	1983	Co-ordinates
County	Project	Co-ordinates
Northing	<u>151236.9274</u>	
Easting	<u>484208.7297</u>	
State Plane Co-ordinates		
Y	_____	
X	_____	



Revised date	Revised date	Revised date
<u>8-14-90</u>		
<u>8-16-94</u>		
<u>10-11-01</u>		

East 1/4 Corner Sec. 16 T31 R24

Retied Cast Iron Monument



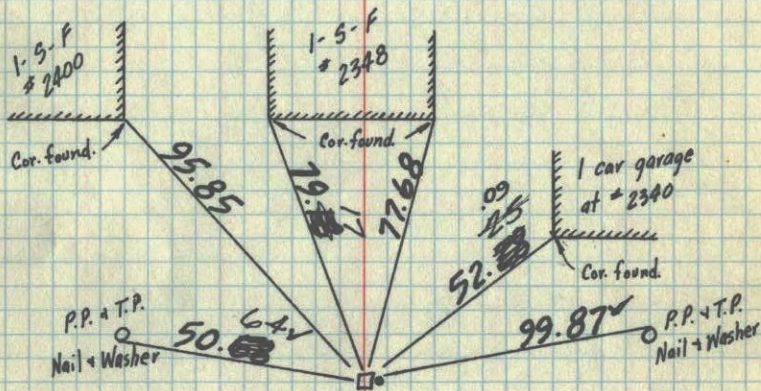
NO. 448 TELETYPE

8-14-90
M. Zimmerman
C. Larsen

E 1/4 Cor. Sec. 16 T31 R24

Conc. Mon. down 0.5' Iron pipe on E. side

Found Broken Old Concrete, Replaced With Cast Iron Mon. (Down .2±) July 12, 1974 R. Farmer



TIE CHECK
7-7-80
B. STEPHENS
P. ROSS
P. HORNBY

TIE CHECK
JUNE 21, 1977
R. SANJERUD
S. BRIEN
J. STEDJENS

Tie Check
July 13, 1966
H. Larson
D. Potter
Tie Check
August 3, 1970
D. Powell
R. Brien
B. Olson
June 5, 64

**TEMPERATURE CORRECTED
AND HORIZONTALLY
TAPED MEASUREMENTS**

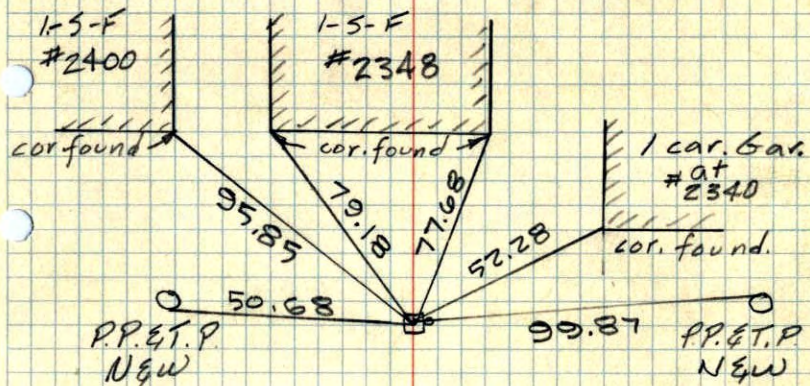
M. D. Anderson
R. Carlson

ROLAND W. ANDERSON
COUNTY SURVEYOR
ANOKA COUNTY, MINNESOTA

E 1/4 Sec. 16, T31, R24

found Conc. Monument
down 0.5'

iron pipe on E. side



Retie

JUNE 5, 1964

M. D. Anderson

R. Carlson

Temp 68°

Tape #3

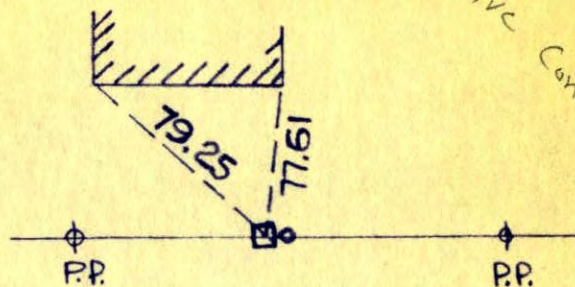
E 1/4 CORNER OF SECTION 15¹⁶
TOWNSHIP 31, RANGE 24

CONC. MON.

129/39

I.P. E SIDE

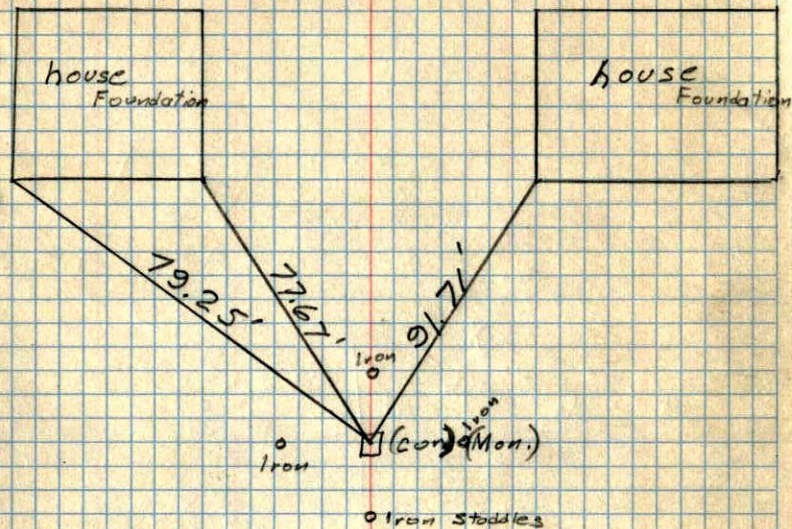
3/15/63



N. C. HOIUM
AND ASSOCIATES, INC.
LAND SURVEYORS

ANOKA, MINNESOTA

E $\frac{1}{4}$ Cor. Sec. 16, T. 31, R. 24
Coon Rapids

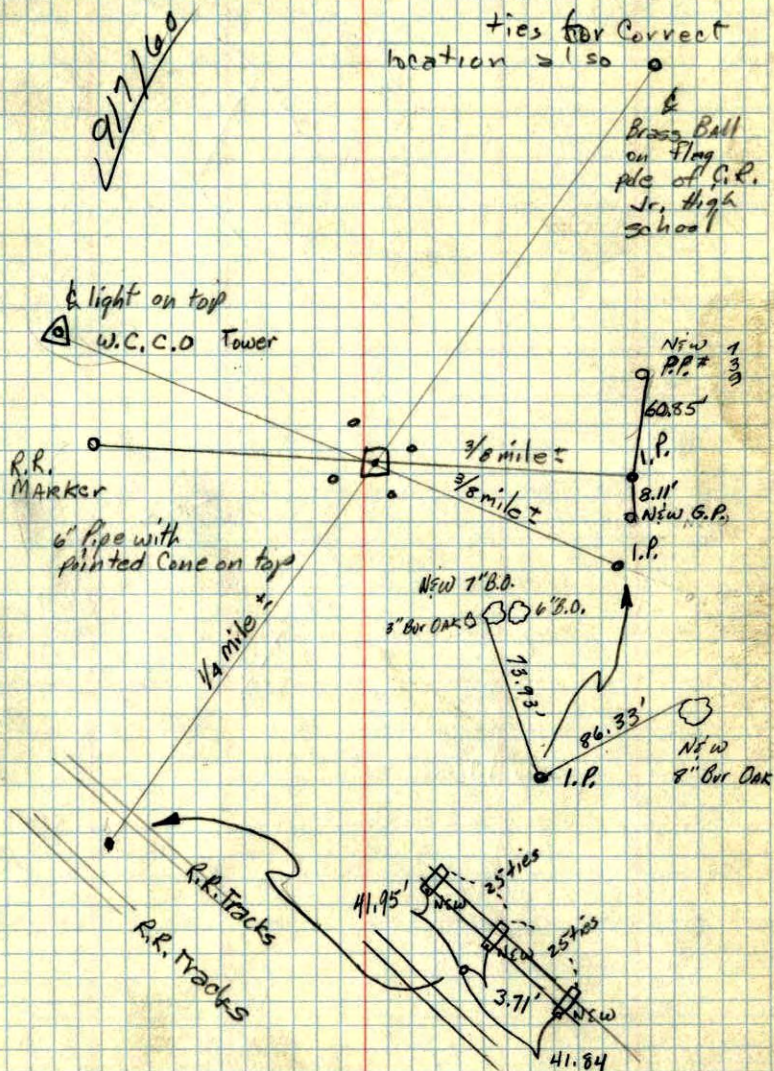


Aug. 24, 1960
Temp. 68°
R. Carlson
R. Giddings
D. Patter
R. Robinson

9/17/60

50175.2
Aug 10
50134.0

E $\frac{1}{4}$ Cor. Sec. 16, T. 31, R. 24
Concrete Monument
Four Iron Pipes set
for Straddles for
correct location
ties for correct
location = 150

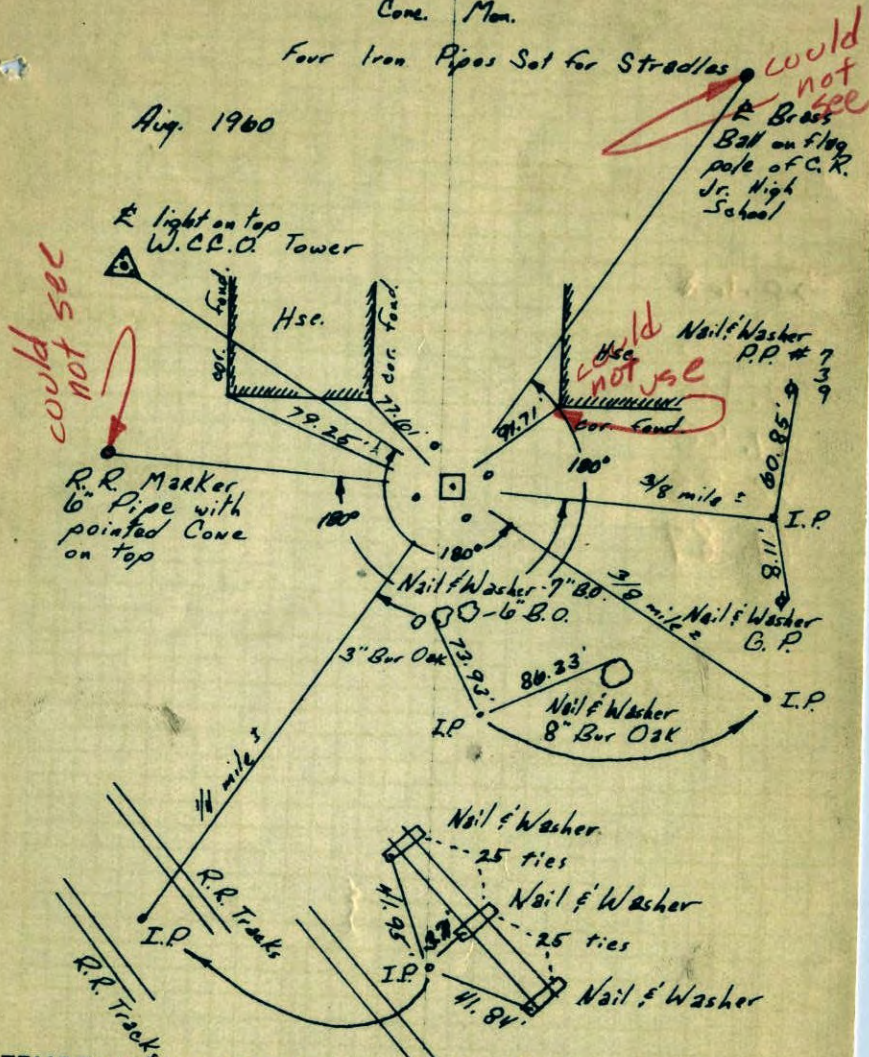


E 1/4 Cor. Sec 16 - T31 - R24

Conc. Man.

Four Iron Pipes Set for Straddles

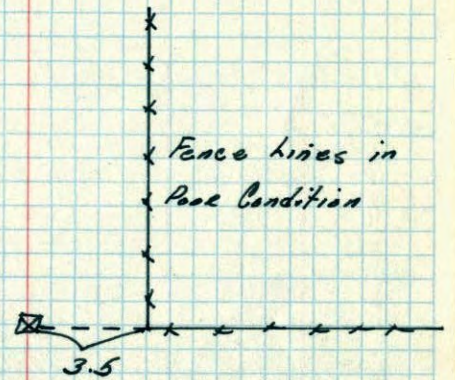
Aug. 1960



TEMPERATURE CORRECTED ROLAND W. ANDERSON
 AND HORIZONTALLY TAPED MEASUREMENTS
 COUNTY SURVEYOR
 ANOKA COUNTY, MINNESOTA

E 1/4 Cor. Sec. 16 T31 R24

Conc. Man. 1.5 Below Surface

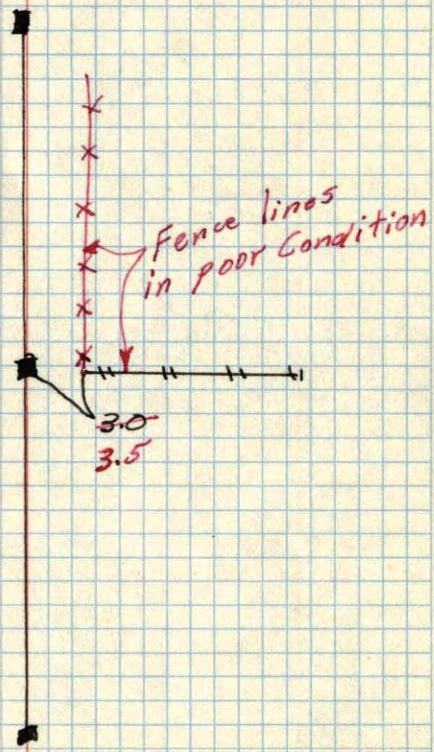


10-7-58
 Don. Gouftee for Harry S. Johnson
 Assoc.

E 1/4 16
W 1/4 corner of Sec. 15 T. 31. R. 24
Concrete Mon. down 15"

✓

Ties by
Harry S. Johnson
10-7-50



May 20, 1944
Cartwright