

# CERTIFICATE OF LOCATION OF GOVERNMENT CORNER

County of Anoka

State of Minnesota

## North 1/4 Corner of Sec. 3 Township 31 Range 24

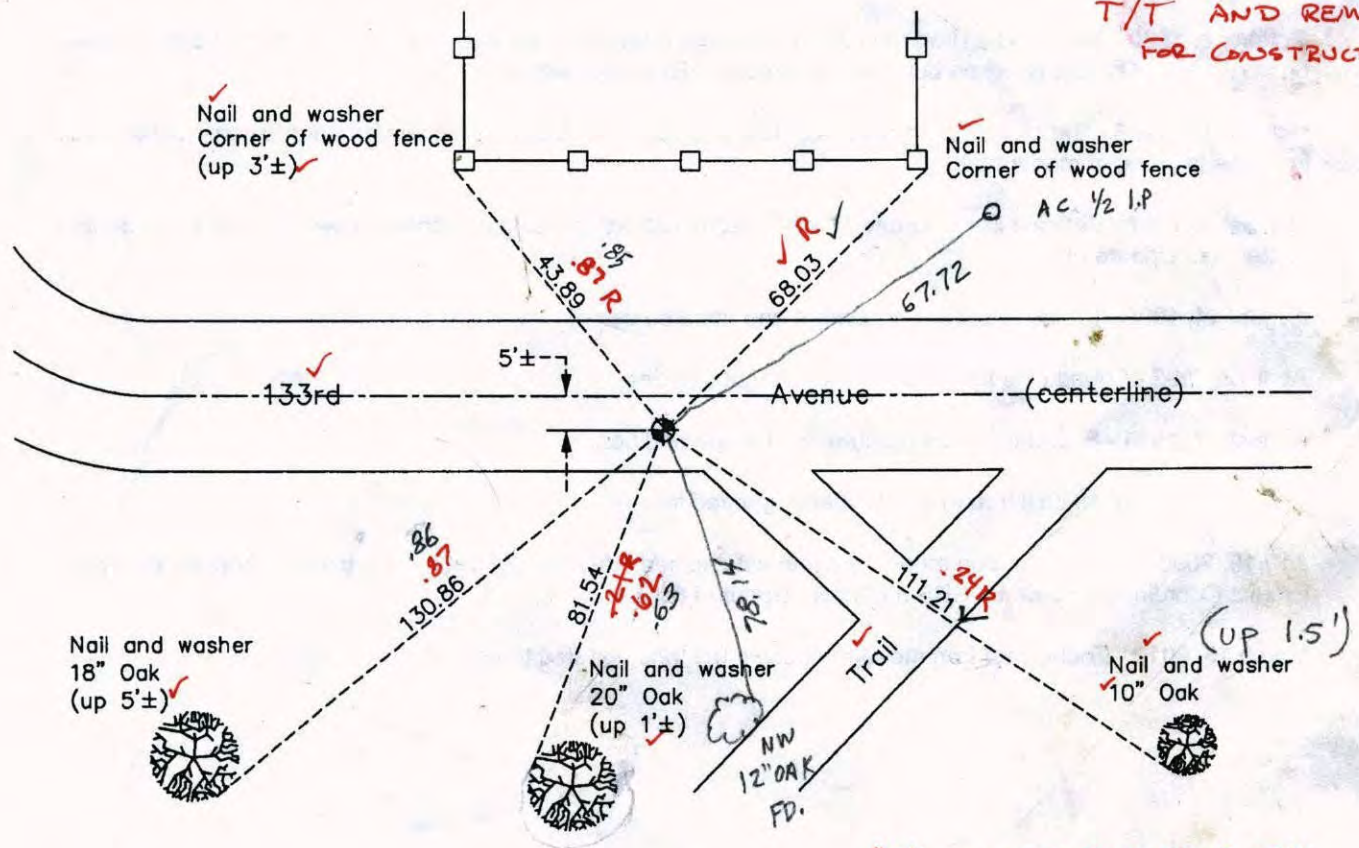
On the 18th day of June, 1964, the described corner was evidenced by a 2" iron pipe found using ties by N.C. Hoium

and to perpetuate the location of said corner, at the exact location thereof, a permanent marker was placed consisting of a cast iron monument

AND on the 15th day of March, 2010, said permanent marker was found down 0.1' and the ties were updated

Updated reference ties are as shown below.

5/17/12  
JS SH  
T/T AND REMOVAL  
FOR CONSTRUCTION.



N.A.D. 1983 Coordinates  
(1996 Adjustment)

County Project Coordinates

Northing 164533.9284

Easting 487105.5721

Date 7/19/00

Revision Date

4/19/10

URS COORD'S BEFORE REMOVAL 30 Q = 0.06

"R" DENOTES REFLECTOR LESS  
PENCIL: MINI PRISM + PK BEFORE STATIC RESET

I hereby certify that this United States public land survey monument record is correct and complete to the best of my knowledge and belief.

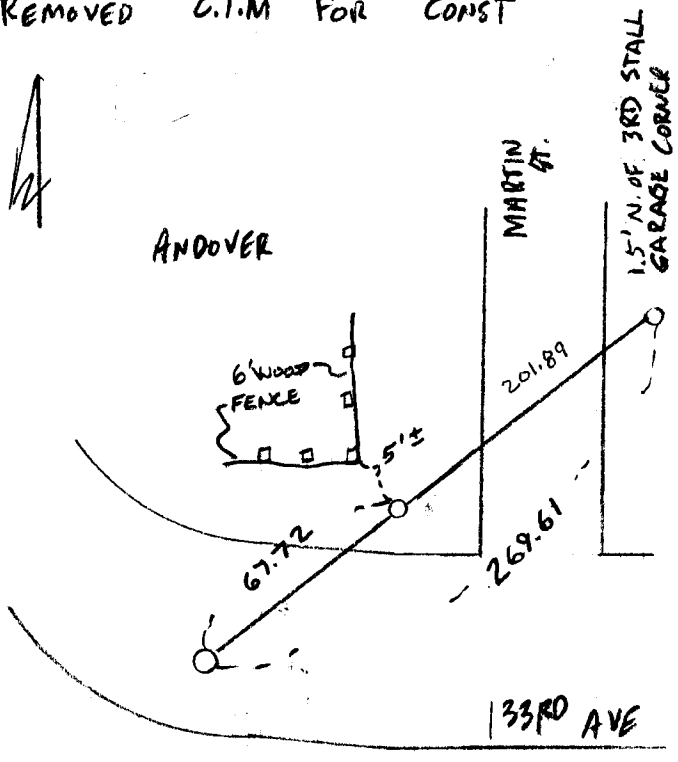
Larry D. Hoium Date 4/19/10  
 Anoka County Surveyor  
 Minnesota License Number 18165

N: 164533.896  
E: 487105.549

N 1/4 COR SEC 3 T 31 R 24  
TRANSIT TIE + SWING TIES  
REMOVED C.I.M FOR CONST

5 14.12

JS  
SH  
JB



COON RAPIDS

NRS COORDS BEFORE REMOVAL

30 Q	N:	164533.896
	E:	487105.549

# CERTIFICATE OF LOCATION OF GOVERNMENT CORNER

County of Anoka

State of Minnesota

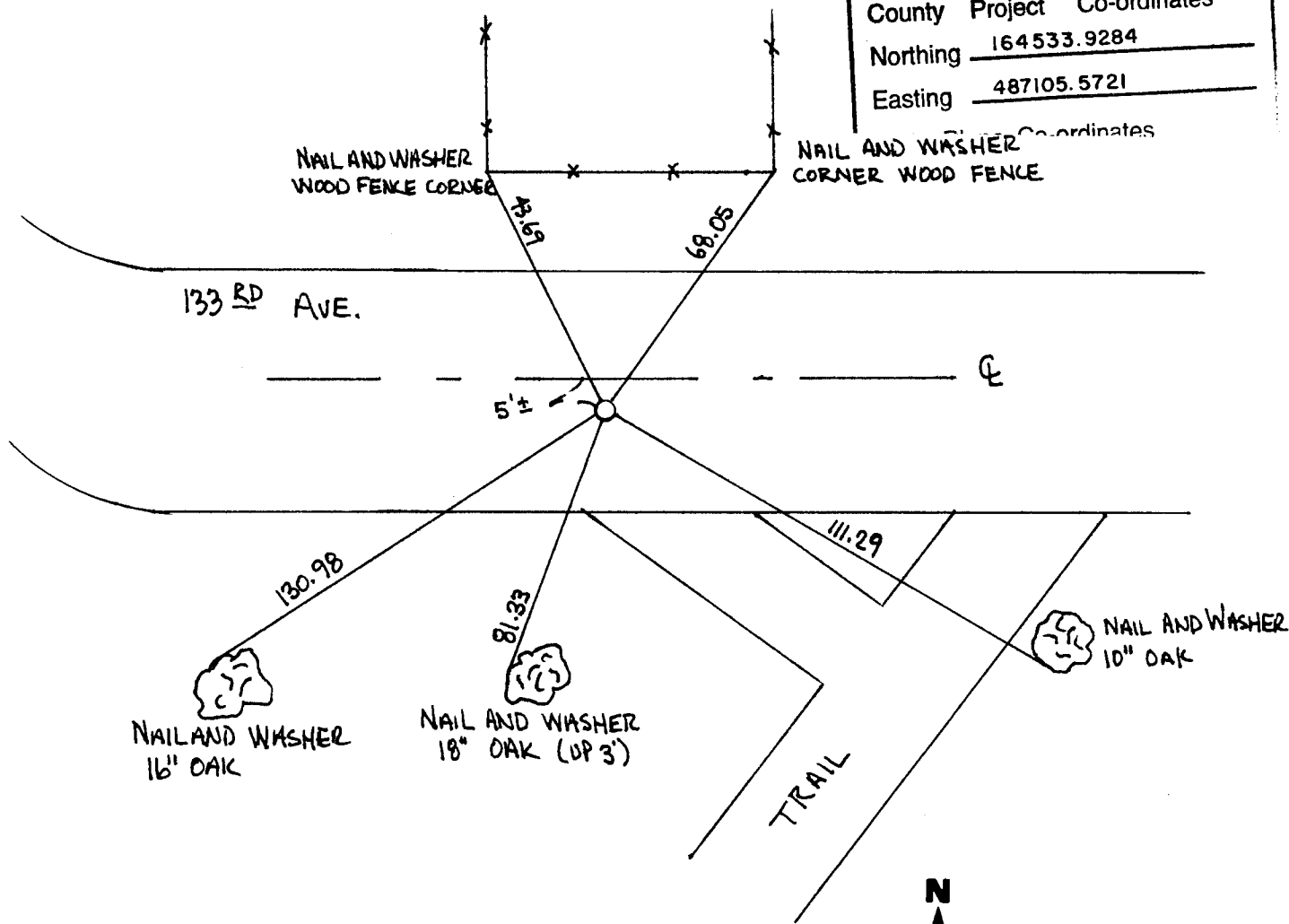
NORTH QTR. Corner of Sec. 3 Township 31 Range 24

I hereby certify that on the 18<sup>TH</sup> day of JUNE, 19 69, I found the described corner which was evidenced by AREA RESURVEY

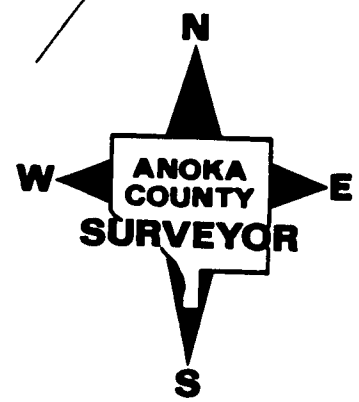
and I further certify that to perpetuate the location of said corner, I did, at the exact location thereof, place a permanent marker consisting of CAST IRON MONUMENT

which reference or witness monuments are located in the manner following:

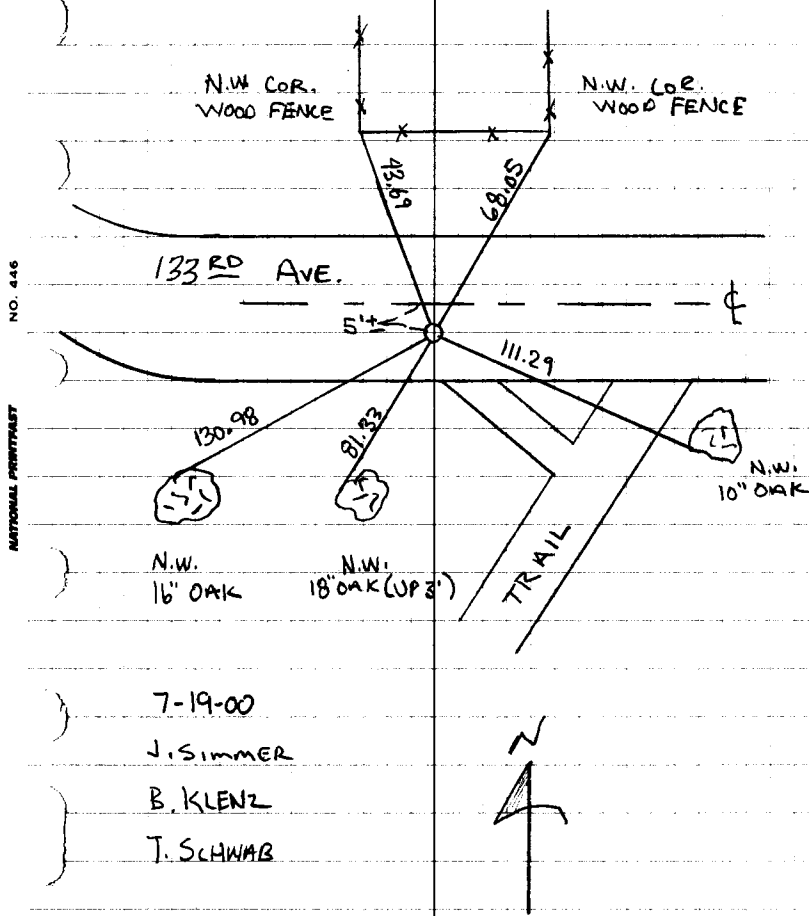
N.A.D.	1983	Co-ordinates
County	Project	Co-ordinates
Northing	164533.9284	
Easting	487105.5721	



Revised date	Revised date	Revised date
8-14-90		
4-12-92		
8-17-94		
5-2-97		
7-19-00		

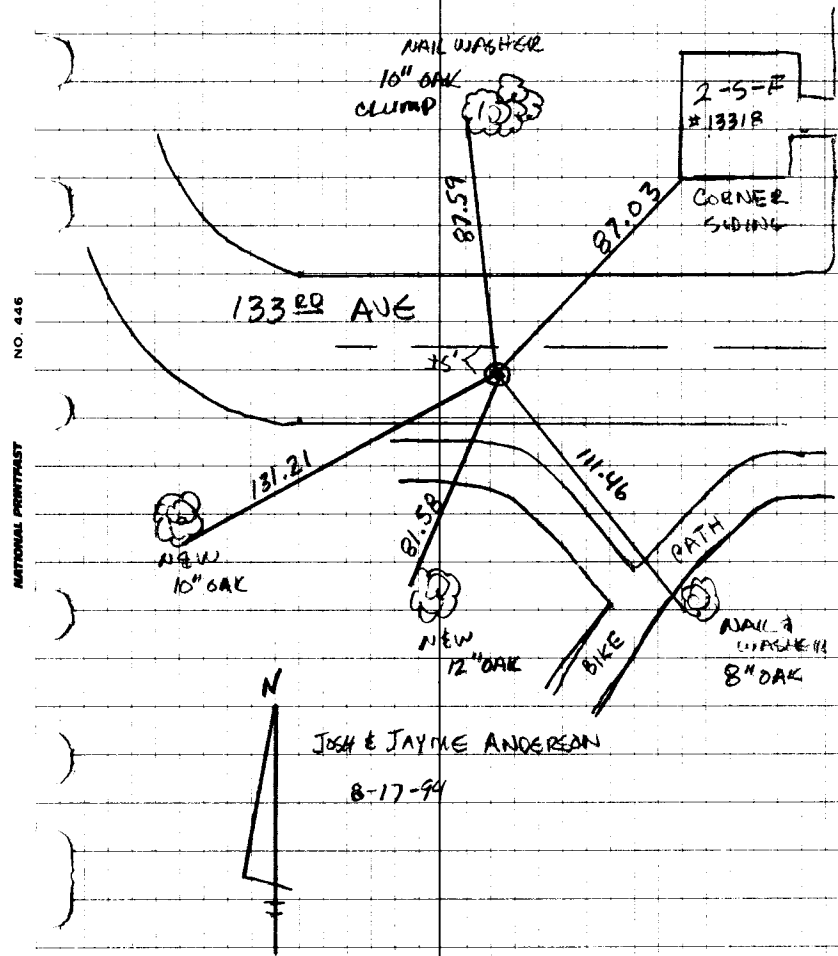


NORTH QTR. COR. SEC. 3, T. 31, R. 24  
 RETIED MON. DURING G.P.S.



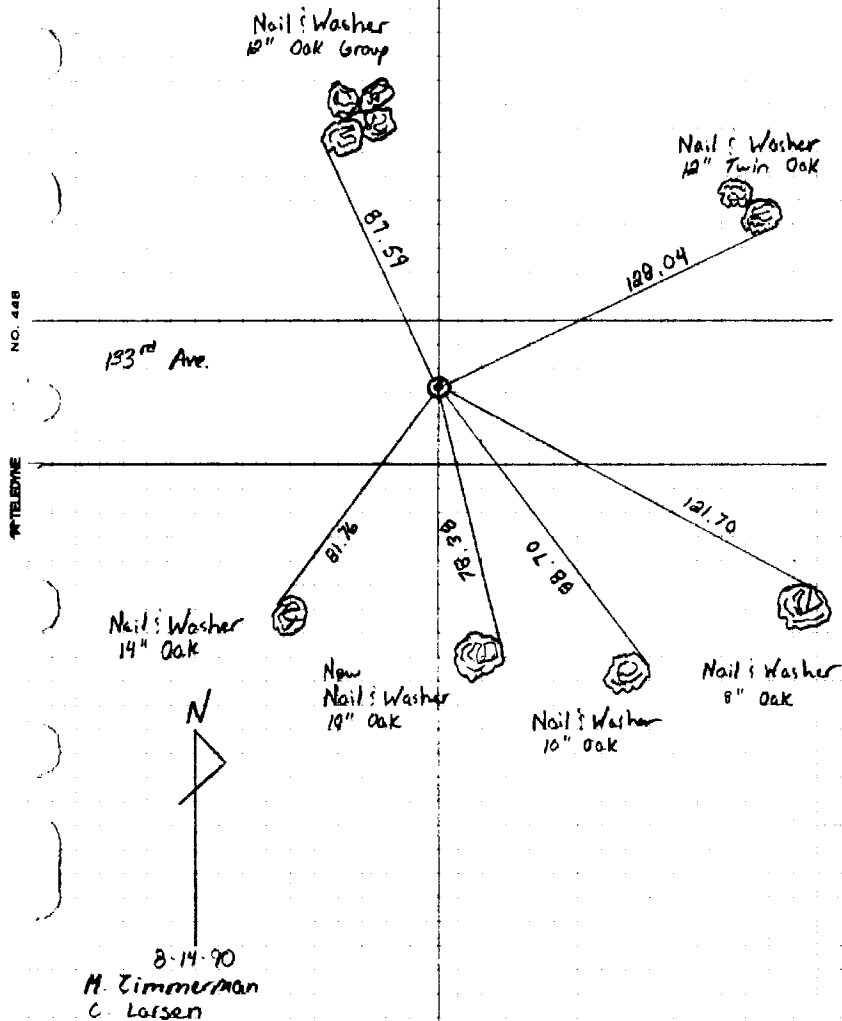
NORTH 1/4 SEC. 3 T. 31 R. 24

RETIE CAST IRON MONUMENT



North 1/4 Corner Sec. 3 T31 R24

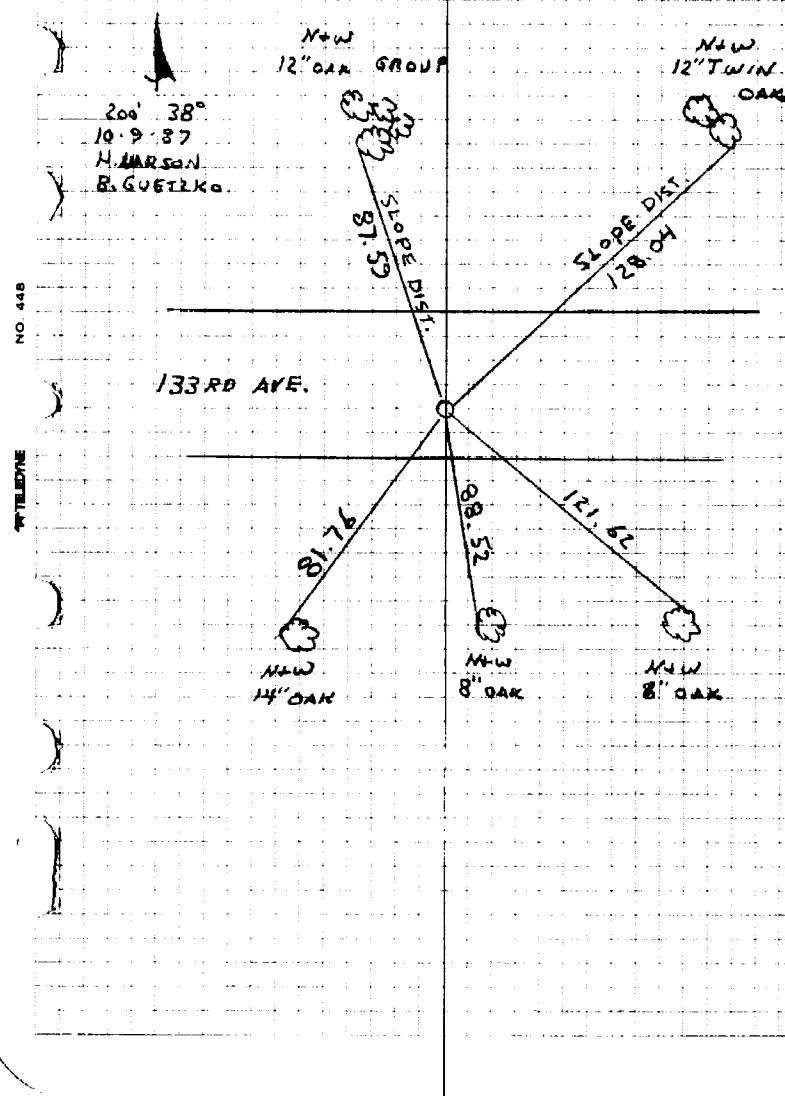
Retied Cast Iron Monument



N 1/4 CORNER SECTION 3. T31 R24

RESET CORNER AFTER CONSTRUCTION

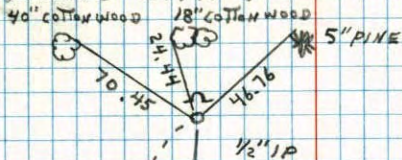
FROM CONST. TIES COR. 5' SOUTH OF  
CENTERLINE - PK IN PLACE



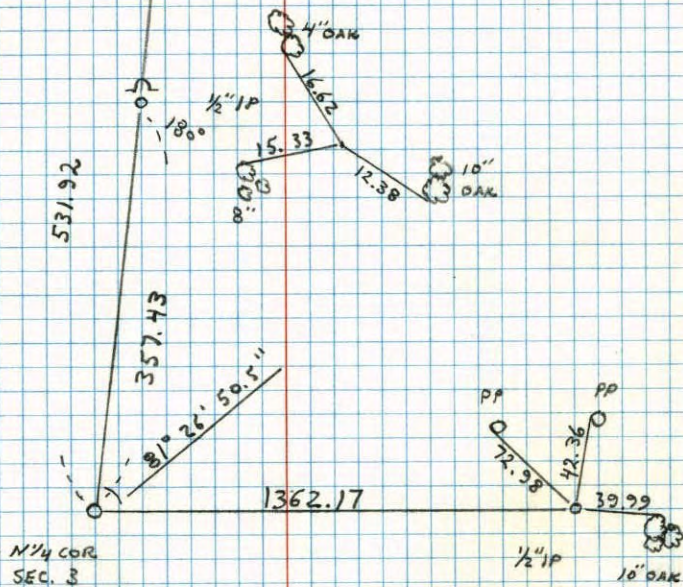
## N 1/4 CORNER SECTION 3 T31 R24

RETIED FOR CONSTRUCTION REMOVED AND

REPLACED WITH I.P. SIGN &amp; POSTS WITH I.P.s



N. LARSON  
B. GUETZKO  
W. GRAMS  
10-10-86



N 1/4 COR  
SEC. 3

357.43  
275.36  
82.07

## N 1/4 CORNER SECTION 3 T31 R24

REPLACED 2" IRON PIPE FOUND IN 1964 BY M. D. ANDERSON WITH CAST IRON MONUMENT. CAST IRON FLUSH WITH SIGN AND POST ON NORTH SIDE.

OLD TIES CHECKED OUT, BUT WERE GROWN OVER. REPLACED WITH NEW TIES.

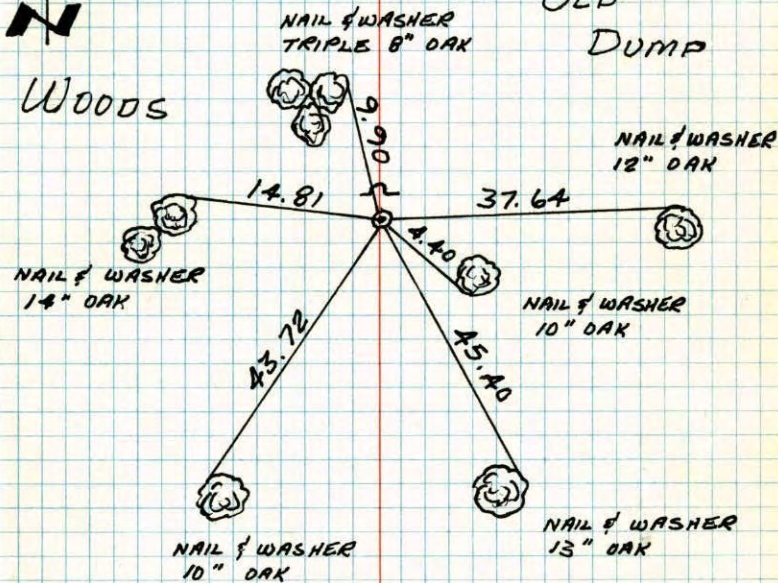
June 18, 1964  
M. D. Anderson  
R. W. Carlson



8 OCT 80  
H. LARSON  
B. GUETZKO  
D. NAQLAK

OLD  
DUMP

WOODS



WOODS

TEMPERATURE CORRECTED  
AND HORIZONTALLY  
TAPED MEASUREMENTS

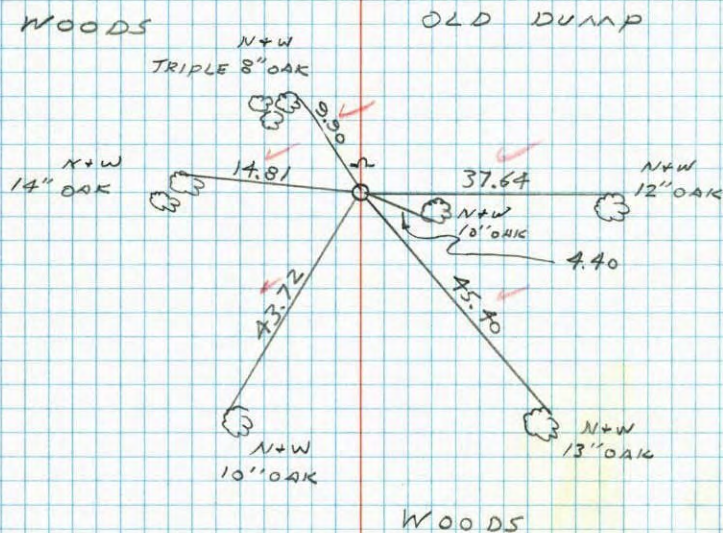
ROLAND W. ANDERSON  
COUNTY SURVEYOR  
ANOKA COUNTY, MINNESOTA.

N<sup>1</sup>/<sub>4</sub> CORNER SECTION 3 T31 R24

REPLACED 2" IRON PIPE FOUND IN 1964 BY M.D. ANDERSON, WITH CAST IRON MONUMENT. C.I. ERUSH WITH SIGN AND POST ON NORTH SIDE.

OLD TIES CHECKED BUT WERE GROWN OVER. REPLACED WITH NEW TIES

#3 60°  
10-8-80  
H. LARSON  
B. GUETZKO  
D. NAGLAK



NO. 448

TELEPHONE

N<sup>1</sup>/<sub>4</sub> Cor. Sec. 3-T31-R24

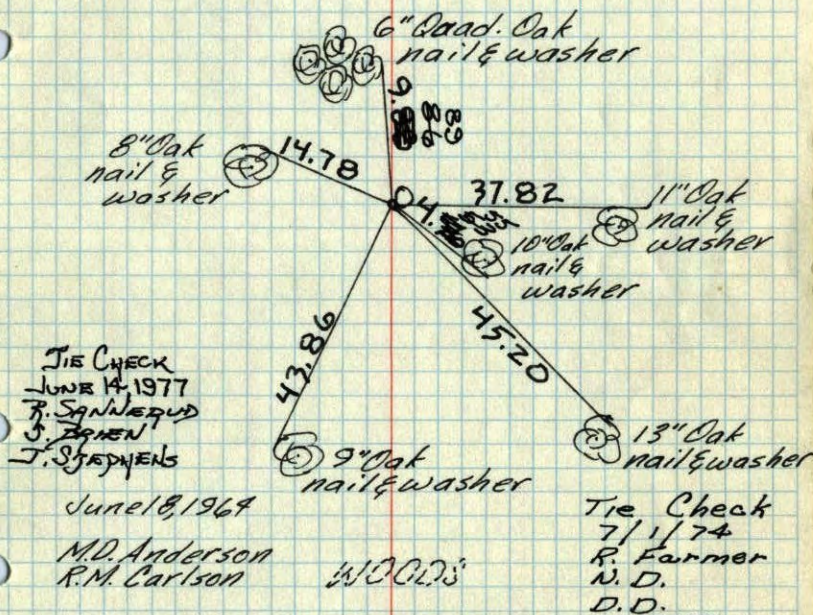
found 2" iron pipe from ties by N.C. Hoium

Iron pipe is flush and there is a 6" wood post on east side up 3'



WOODS

JUNKYARD



TIE CHECK  
JUNE 14, 1977  
R. SANDELUP  
J. BRIEN  
J. SJEDYENS

June 18, 1964

M.D. Anderson  
R.M. Carlson

Tie Check  
July 22, 1966  
H. Larson  
D. Potter  
G. Reimer  
August 4, 1970  
D. Powell  
R. Brien  
B. Olson

Tie Check  
7/1/74  
R. Farmer  
N.D.  
D.D.

TEMPERATURE CORRECTED  
AND HORIZONTALLY  
TAPED MEASUREMENTS

ROLAND W. ANDERSON  
COUNTY SURVEYOR  
ANOKA COUNTY, MINNESOTA

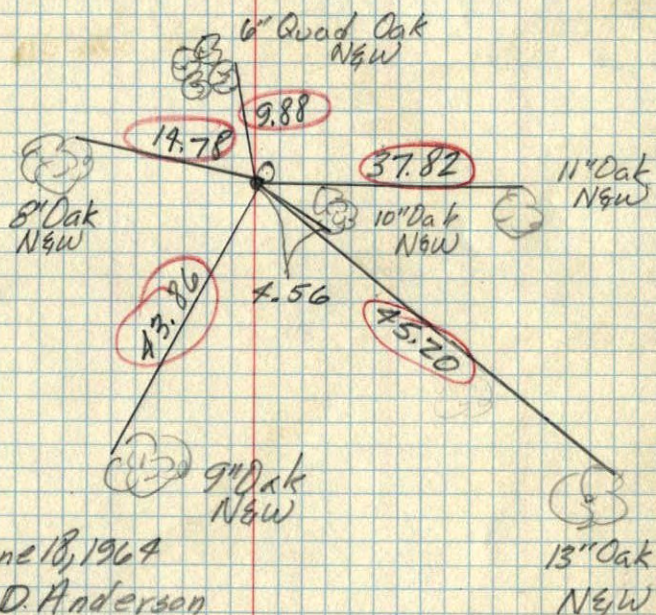
N<sup>1</sup>/<sub>4</sub> Cor. Sec. 3-T31-R24

found 2" Iron pipe from ties  
by N.C. Hoium

Iron flush with ground and post  
there is a 6" x 3" wood on  
east side

WOODS

JUNKYARD



June 18, 1964

M.D. Anderson

R. Carlson

Temp 70°

Tape #3

WOODS

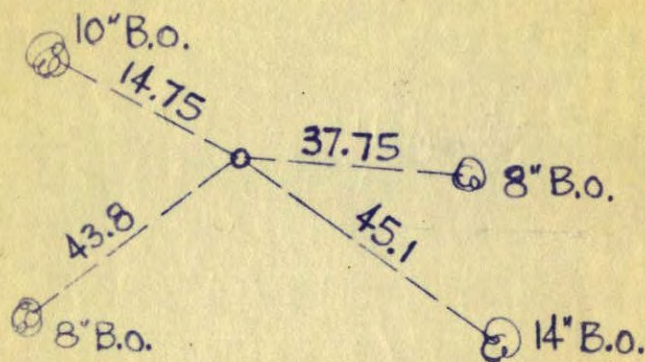
<sup>4A</sup>  
N<sup>1</sup>/<sub>4</sub> CORNER OF SECTION 3  
TOWNSHIP 31, RANGE 24

2" I.P. By 8" F.P.

2/8/62

123/26

Don't have



N. C. HOIUM  
AND ASSOCIATES, INC.  
LAND SURVEYORS

ANOKA, MINNESOTA