

CERTIFICATE OF LOCATION OF GOVERNMENT CORNER

County of Anoka

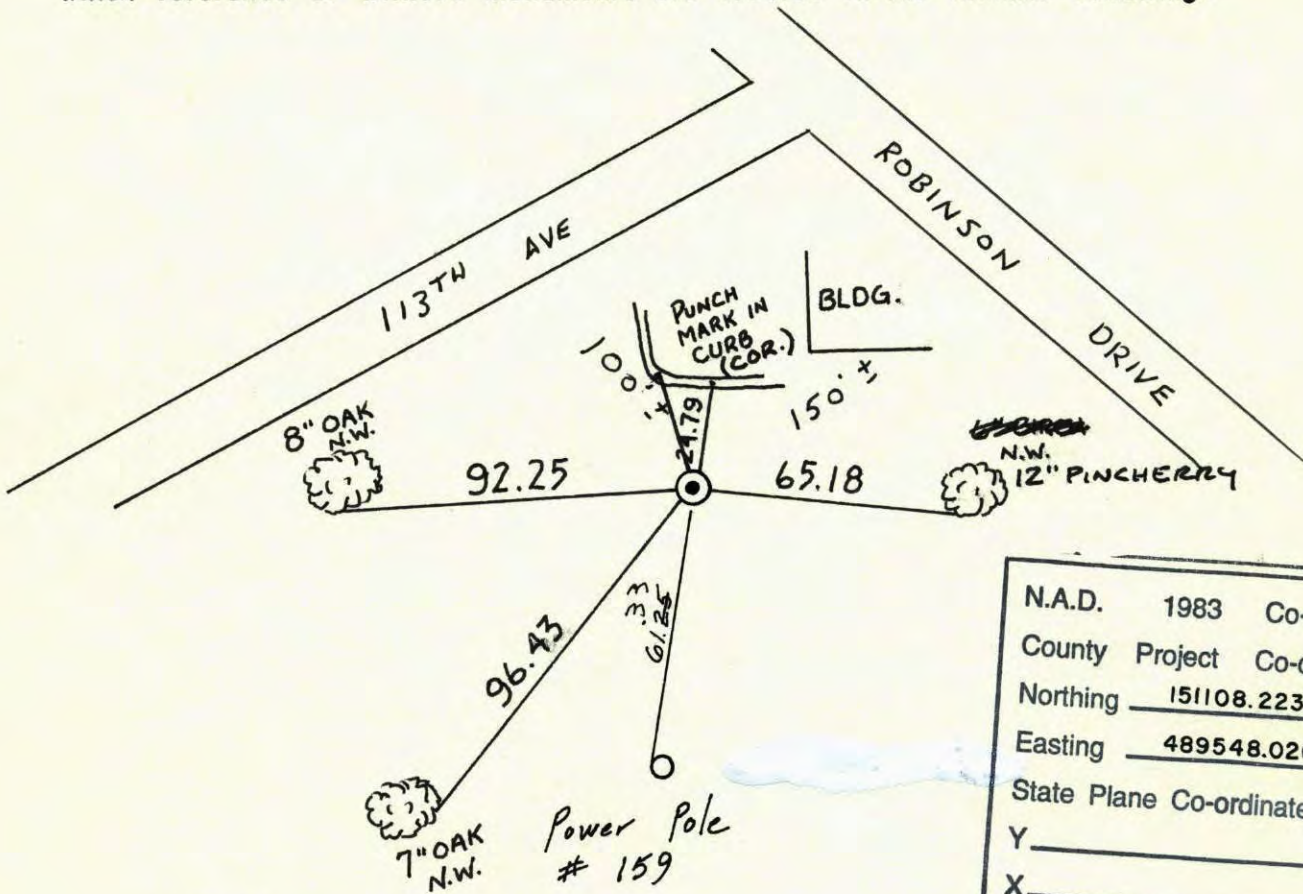
State of Minnesota

EAST ONE QUARTER Corner of Sec. 15 Township 31 Range 24

I hereby certify that on the 1 day of AUGUST, 1960, I found the described corner which was evidenced by CAST IRON (JUDICIAL)

and I further certify that to perpetuate the location of said corner, I did, at the exact location thereof, place a permanent marker consisting of CAST IRON JUDICIAL LAND MONUMENT

which reference or witness monuments are located in the manner following:



N.A.D.	1983	Co-ordinates
County	Project	Co-ordinates
Northing	<u>151108.2239</u>	
Easting	<u>489548.0265</u>	
State Plane Co-ordinates		
Y	_____	
X	_____	
Date	_____	

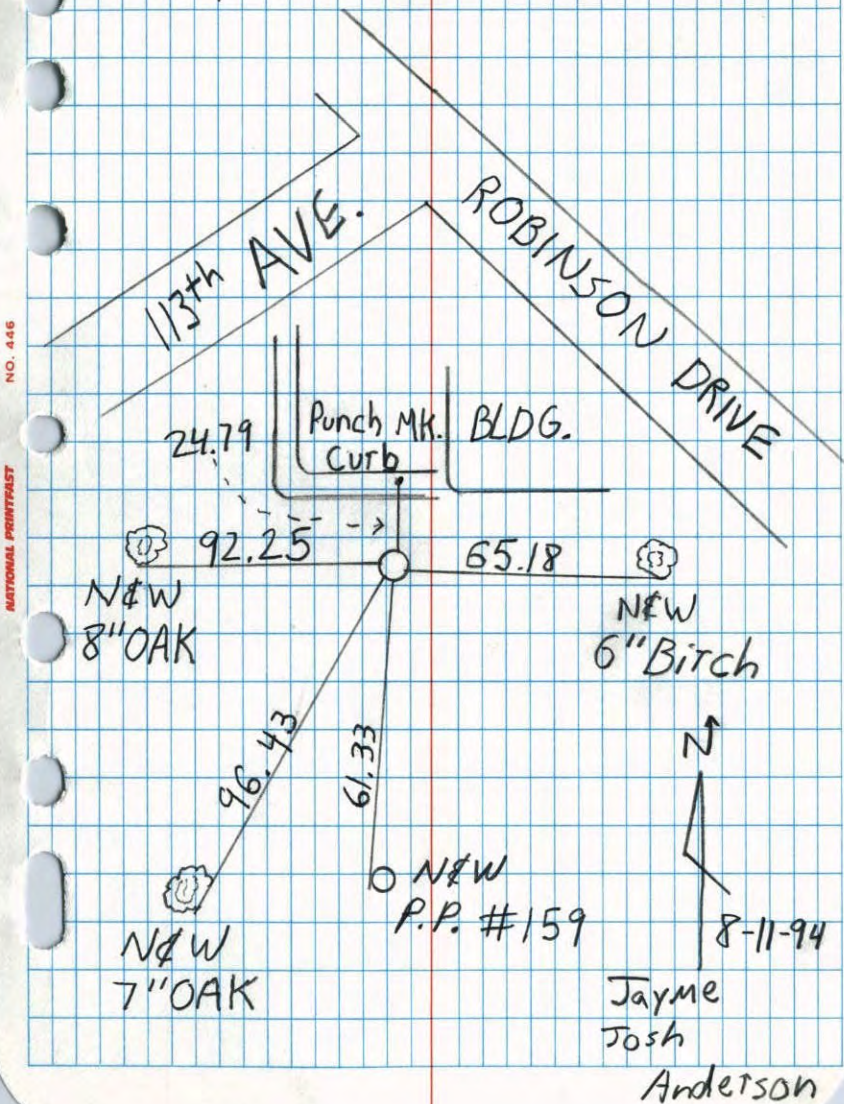
8-13-90
M. Zimmerman

Revised date	By	CHECKED
7-29-70	D.P. R.B. B.O.	8-11-94
7-9-74	R.F. N.D. D.D.	8-10-01
7-21-77	R.S. S.B. J.S.	
7-1-80	B.S. P.R. P.H.	
7-22-83	P.R. J.B.	
REDRAWN 1-10-84	R. KREUSER	
6-19-86	D. ROSS	

Minnesota State Plane Coordinates
South Zone
 Y _____ X _____
 _____, _____
County Surveyor **Date**
Registered Land Surveyor No. _____

E 1/4 Sec. 15 T.31 R.24

Retie Cast Iron Mon.



NO. 426 NATIONAL PRINTFAST

E 1/4 Cor. Sec. 15 - T31 - R24

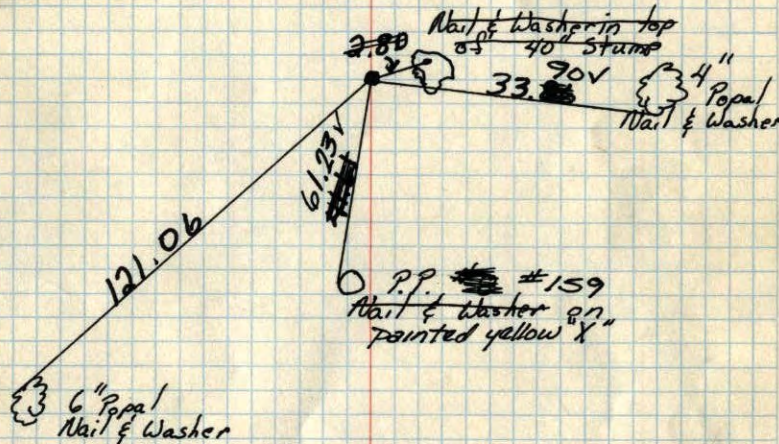
Cast Iron Judicial Landmark Flush.

2 1/2 East of Power Pole Line.

TIE CHECK
7/9/74
R. FARMER
D.D.
N.D.

8/1/60
Bill Rogers
Dennis Potter
Ralph Robinson

Retie 7/29/70
D. Powell
R. Brien
B. Olson



TIE CHECK	TIE CHECK
7-1-80	JUNE 21, 1977
B. STEPHENS	R. SANDERUD
P. ROSS	S. BRIEN
P. HORNBY	J. SJEDHENS

ROLAND W. ANDERSON
COUNTY SURVEYOR
ANOKA COUNTY, MINNESOTA

TEMPERATURE CORRECTED
AND HORIZONTALLY
TAPED MEASUREMENTS

CERTIFICATE OF LOCATION OF GOVERNMENT CORNER

EAST QUARTER Corner of Section 15, Township 31 N, Range 24 W, 4th P.M.

STATE OF MINNESOTA, County of Anoka

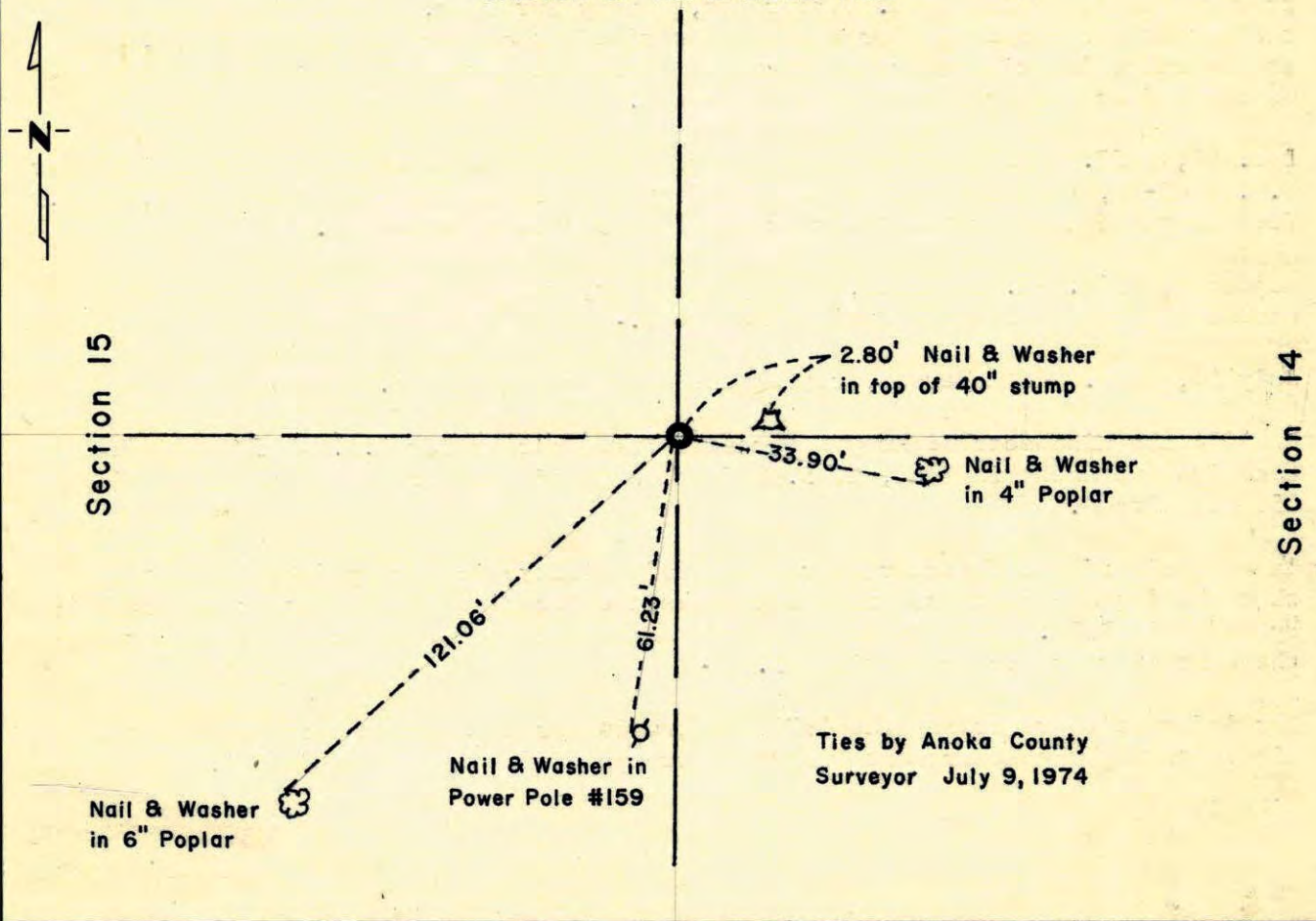
At the corner location shown on the sketch:

On 1974 found a Cast Iron Monument
DATE

left monument as found, lowered monument, removed monument (explain)

On _____ placed a _____
DATE

SKETCH OF REFERENCE TIES



Statement of evidence relative to this corner location is on back of page.

I hereby certify that this document and the data contained herein was prepared by me or under my direct supervision.

John E. Sweeney 9-26-75
SIGNATURE DATE

Registration No. 10460

Land Surveyor, Professional Engineer

County Surveyor, County Engineer

OFFICE OF THE REGISTER OF DEEDS

County of _____

I hereby certify that this document was filed in the Reg. of Deeds office at _____ .M. on the _____ day of _____ A.D., 19 _____

Register of Deeds _____

By _____, Deputy

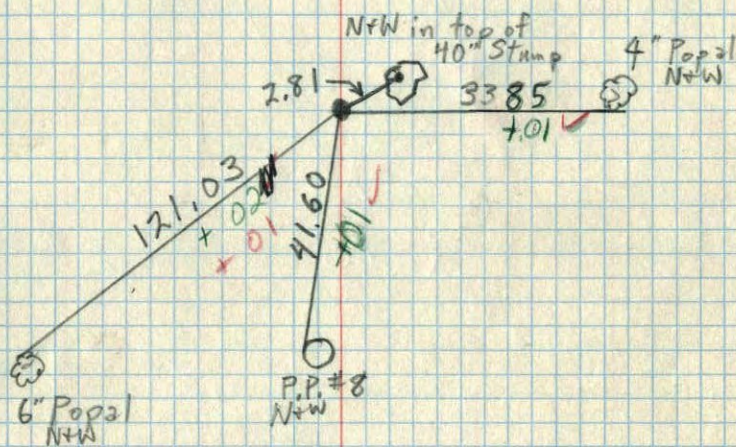
DOCUMENT NO. _____

E 1/4 Cor. Sec. 15-T31-R24

Cast Iron Judicial Landmark flush.

2'± East of Power Pole Line.

7/29/70
#10-88
D. Powell
R. Brien
B. Olson

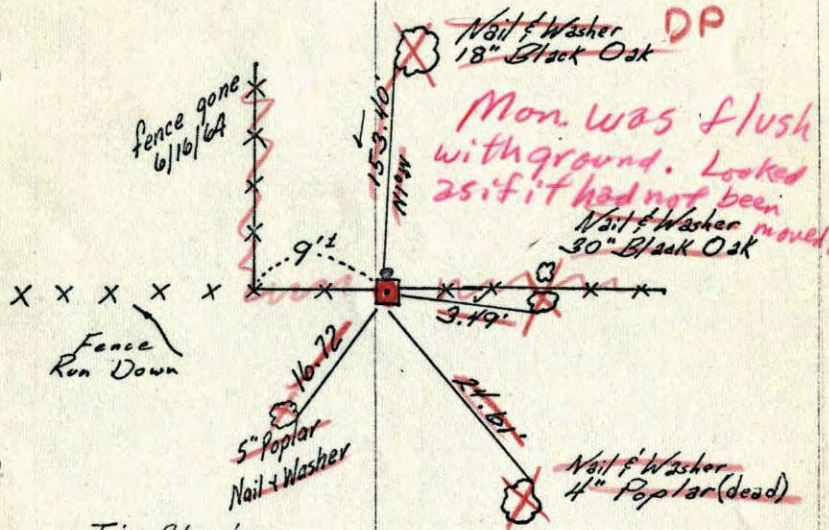


~~E 1/4~~ Cor. Sec. 15-T31-R24

~~Cove. Mon. Flush
Iron Pipe on North Side~~

Cast Iron Judicial Landmark flush

New Drawing.
All ties gone.
7/29/70
DP



Tie Check
July 18, 1966
H. Larson
D. Potter

Temp. 84°
8/1/60

TEMPERATURE CORRECTED
AND HORIZONTALLY
TAPED MEASUREMENTS

Bill Rogers
Dennis Potter
Ralph Robinson

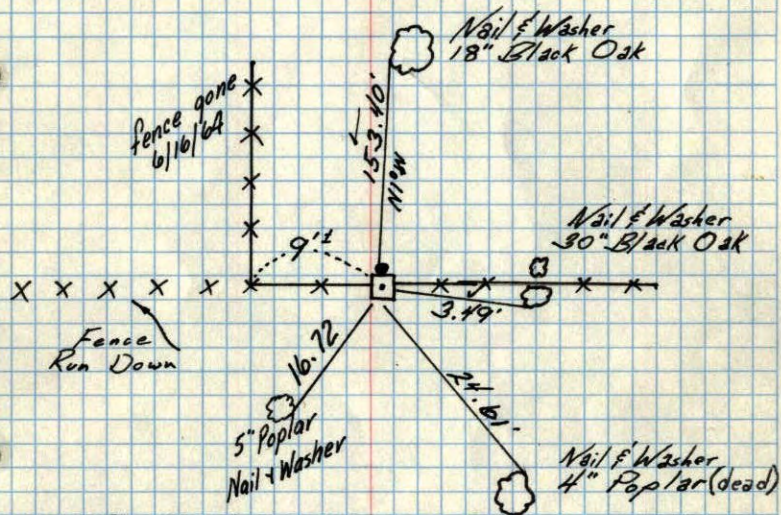
Retie 6/16/64
M. D. Anderson
R. Carlson

ROLAND W. ANDERSON
COUNTY SURVEYOR
ANOKA COUNTY, MINNESOTA

E 1/4 Cor. Sec 15 - T31 - R24

~~Conv. Mon. Flush~~
~~Iron Pipe on North Side~~

Cast Iron Judicial Landmark flush

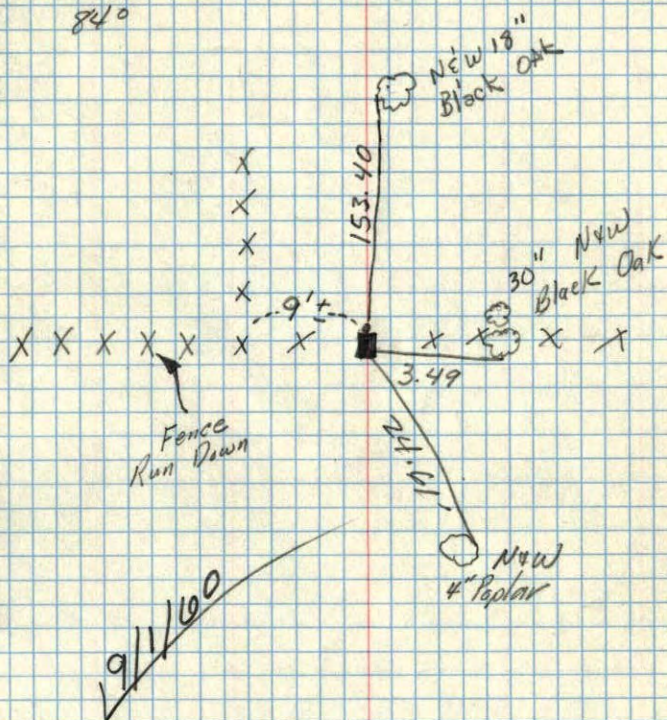
Tie Check
July 18, 1966
H. Larson
D. Potter

Temp. 84°

8/1/60

Bill Rogers
Dennis Potter
Ralph RobinsonTEMPERATURE CORRECTED
AND HORIZONTALLY
TAPED MEASUREMENTSRetie 6/16/64
M. D. Anderson
R. CarlsonROLAND W. ANDERSON
COUNTY SURVEYOR
ANOKA COUNTY, MINNESOTA

49253.7 E 1/4 Cor. Sec. 15 T31 R24

Conv. Mon. Flush
Iron Pipe on North Side

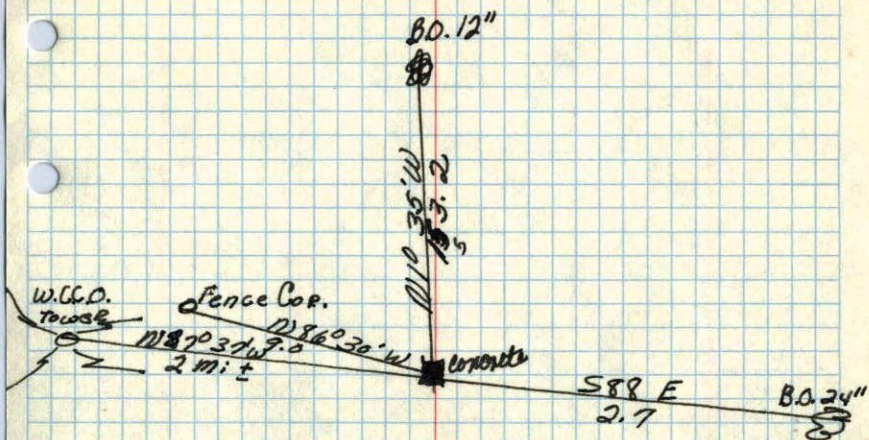
Temp. 84°

8/1/60

Bill Rogers
Dennis Potter
Ralph Robinson

E 1/4 corner of Section 15 T.31 R.24 ✓

Concrete Mon. Flash under center of above stone.



Nov. 10, 1944
Cartwright