

CERTIFICATE OF LOCATION OF GOVERNMENT CORNER

County of Anoka

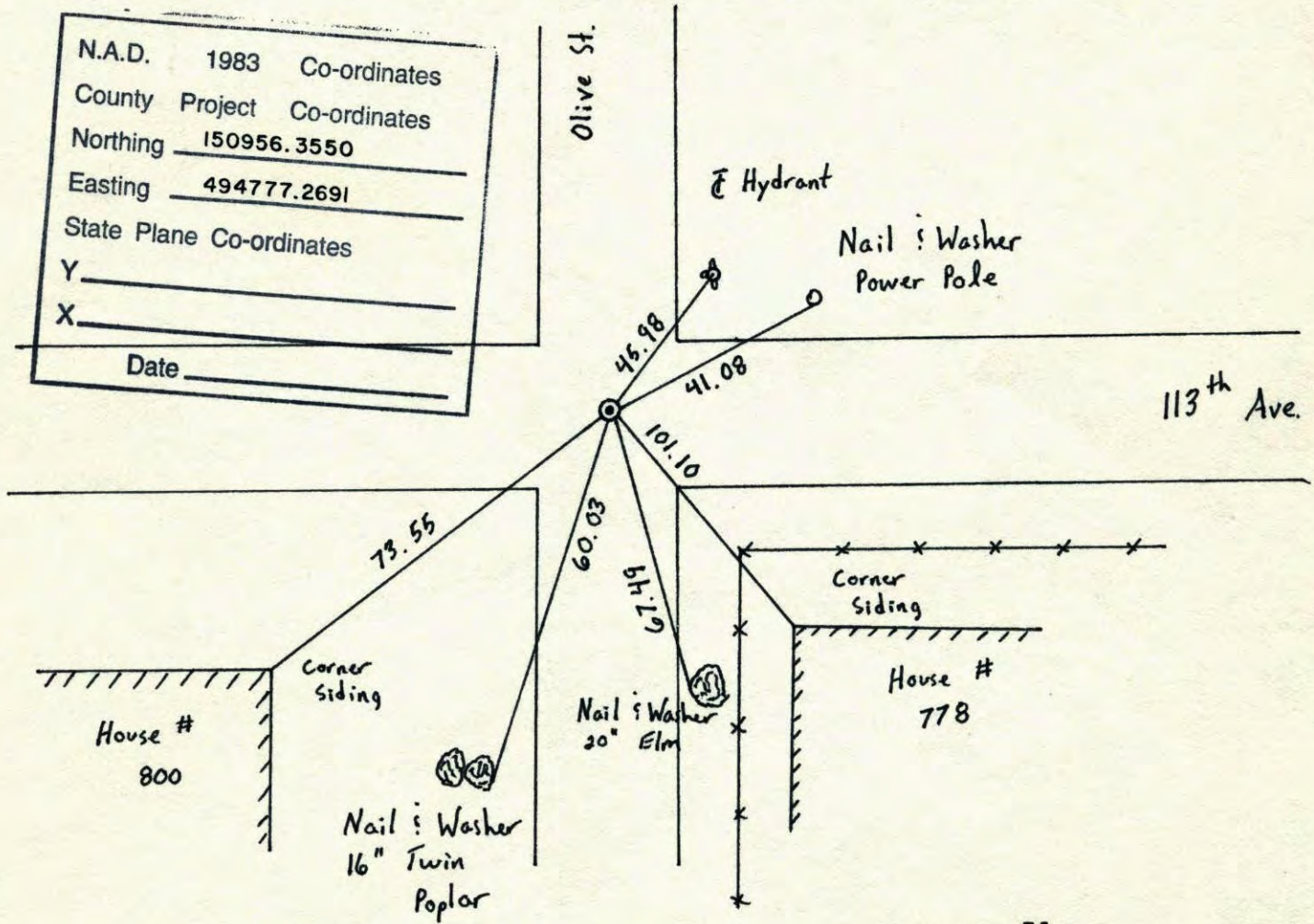
State of Minnesota

West 1/4 Corner of Sec. 13 Township 31 Range 24

I hereby certify that on the 18 day of October, 1963, I found the described corner which was evidenced by 1 1/2" Iron Pipe

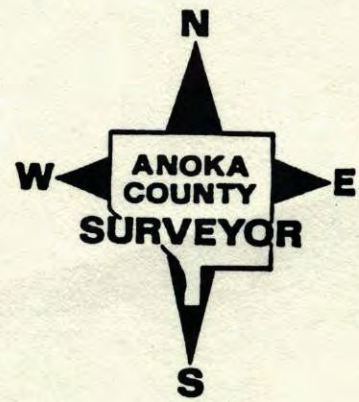
and I further certify that to perpetuate the location of said corner, I did, at the exact location thereof, place a permanent marker consisting of Cast Iron Monument

which reference or witness monuments are located in the manner following:



N.A.D.	1983	Co-ordinates
County Project		Co-ordinates
Northing	150956.3550	
Easting	494777.2691	
State Plane Co-ordinates		
Y		
X		
Date _____		

Revised date	Revised date	Revised date
8-21-67	6-19-86	
7-30-70	8-13-90	
7-12-74	8-11-94	
6-22-77		
7-7-80		
7-18-83		
2-6-84		



West 1/4 Corner Sec. 13 T31 R24

Retied Cast Iron Monument



OLIVE ST.

B-13-90
M. Zimmerman
C. Larsen

Hydrant

Nail & Washer
Power Pole

113th Ave.

73.55

60.05

101.10

67.11

corner siding

House # 778

Nail & Washer
20" Elm

corner siding

House # 800

Nail & Washer
16" Turin Poplar

45.98

41.08

NO. 448

TELEPHONE

W 1/4 Cor. Sec. 13-31-24

Found 1 1/2" Iron pipe

Checked Iron with area plats

Set Cast Iron Monument flush
August 21, 1967 8± West of E.

D. Potter
D. Powell

Pk Nails South + West.

Oct. 18, 1963

M. D. Anderson
E. Madson

Tie Check
JUNE 22, 1977
R. SPANLERUD
S. BRIEN
J. SJEDHENS

Top Center
Water Hydrant

Near Face
of Manhole

AVENUE

TIE CHECK
T-T-80
B. STEPHENS
P. ROSS
P. HORNBY

13" Elm
Nail + Washer

Cor. Conc.
Block

778
1-5-F

#11300
1-5-F

Cor. Conc.
Block

80.35

45.98

113TH

1.18

91.44

OLIVE

67.63

#800
1-5-F

Cor. Conc.
Block

Tie Check
July 30, 1970
D. Powell
R. Brien
B. Olson

Tie Check
July 12, 1974
R. Farmer

TEMPERATURE CORRECTED
AND HORIZONTALLY
TAPED MEASUREMENTS

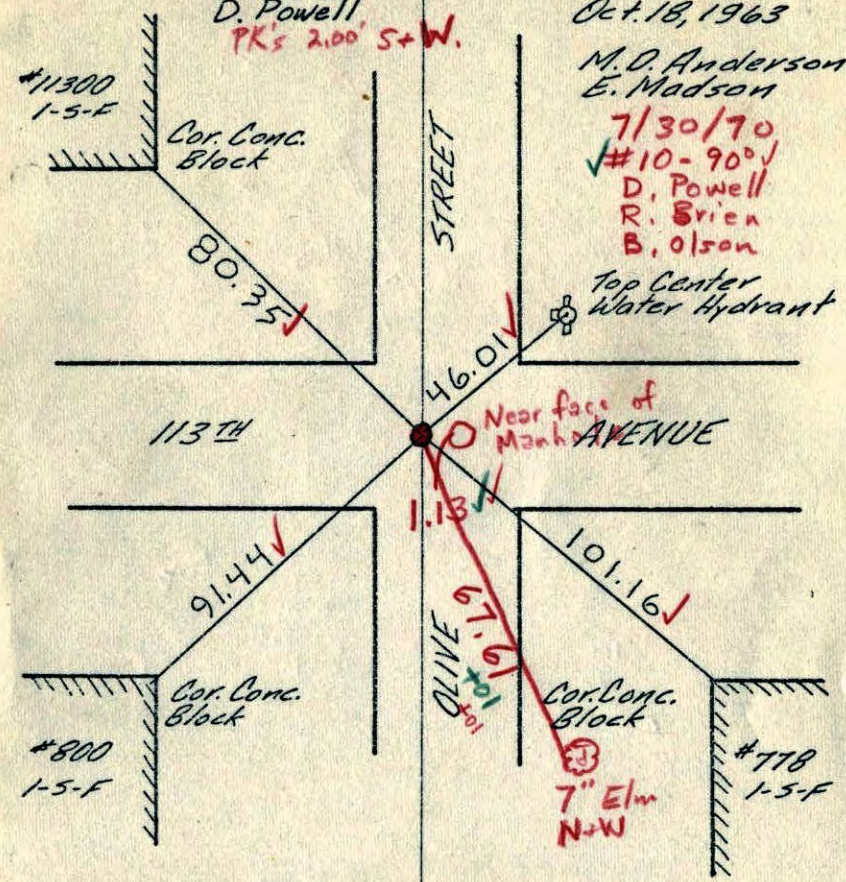
ROLAND W. ANDERSON
COUNTY SURVEYOR
ANOKA COUNTY, MINNESOTA

W 1/4 Cor. Sec. 13-31-24

Found 1 1/2" iron pipe
Checked iron with area plats

Set Cast Iron Monument flush
August 21, 1967
D. Potter
D. Powell
PK's 2.00' S+W.

Oct. 18, 1963
M.D. Anderson
E. Madson
7/30/70
#10-90°
D. Powell
R. Srien
B. Olson



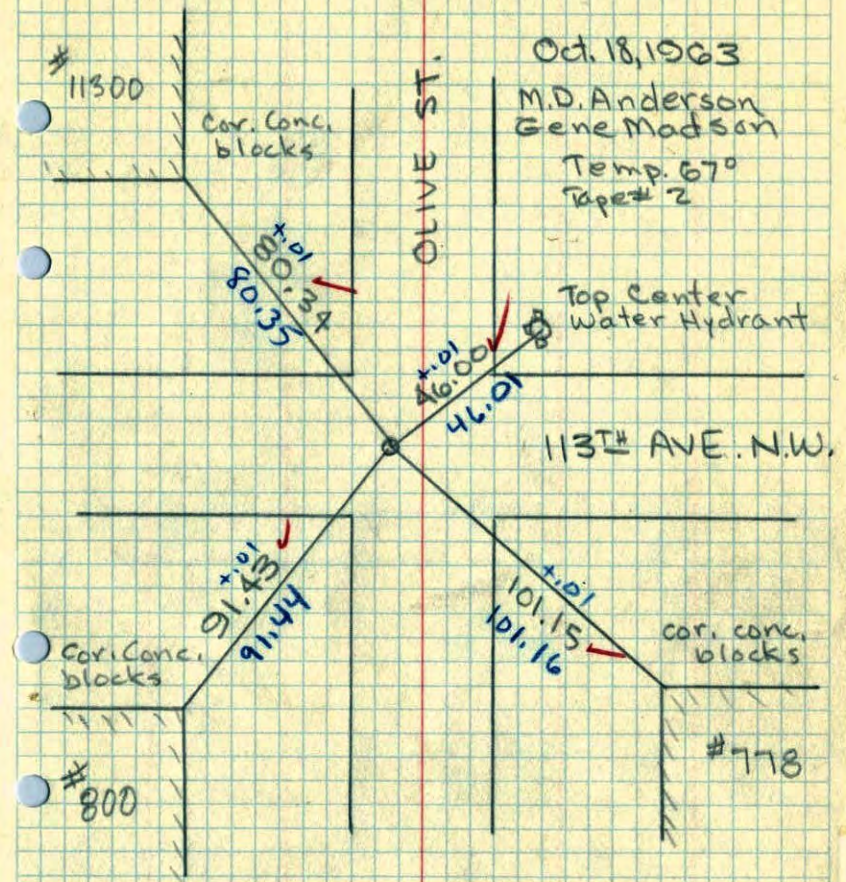
TEMPERATURE CORRECTED
AND HORIZONTALLY
TAPED MEASUREMENTS

ROLAND W. ANDERSON
COUNTY SURVEYOR
ANOKA COUNTY, MINNESOTA

W 1/4 Cor. Sec. 13-31-24

found 1 1/2" iron pipe flush

Oct. 18, 1963
M.D. Anderson
Gene Madson
Temp. 67°
Tape # 2

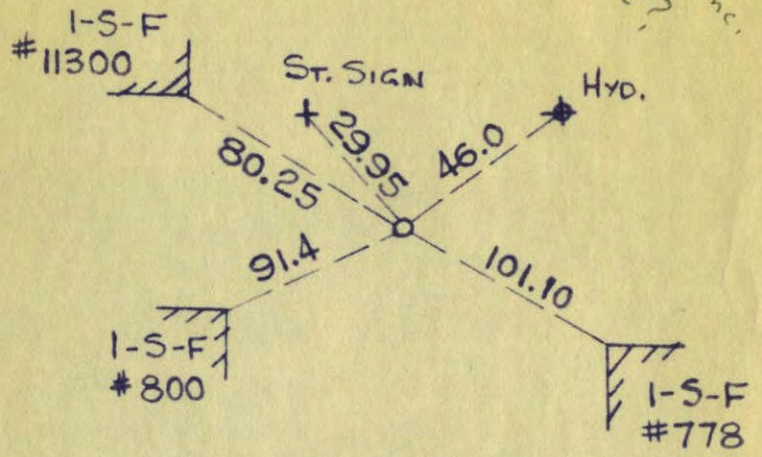


YGE

W 1/4 CORNER OF SECTION 14¹³
 TOWNSHIP 31, RANGE 24

134/26
 10-4-63

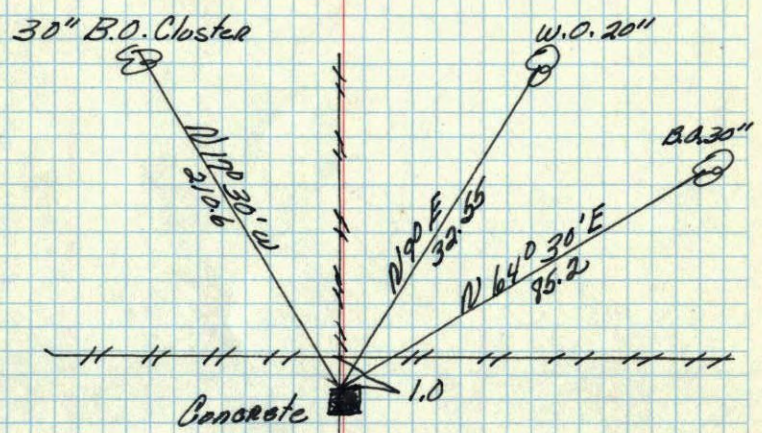
Have Conc.
 Old Tie?



N. C. HOIUM
 AND ASSOCIATES, INC.
 LAND SURVEYORS
 ANOKA, MINNESOTA

54 ✓

E 1/4 CORNER of Sec. 14-t. 31 R. 24
 W 1/4 13 Concrete Mon. 1' up.



all ties
 gone
 28 May 62
 Contact Minder Eng.
 This cor. is
 in Northdale
 4th Addn.

April 19, 1946
 Cartwright